

# **Ørsted - East Coast Operational Assets**

## **Notice to Mariners**

**Period of Notice: December 2022**

**Version: 1**

# Table of Contents

1	Introduction .....	3
1.1	Subsea Cables.....	4
1.2	Wind Farm Positional Data .....	4
2	Key Contacts.....	5
3	Notice to Mariners Summary:.....	6
4	Race Bank – Notice to Mariners .....	7
4.1	Lighting and Marking Status.....	7
4.2	Other Operations.....	7
4.2.1	Benthic Survey .....	7
4.2.2	CXR Cable Inspection Work Scope .....	8
5	Westermost Rough – Notice to Mariners .....	10
5.1	Lighting and Marking Status.....	10
5.2	Other Operations.....	10
5.1.1	WMR Project work .....	10
5.1.2	WMR Main Bearing Replacement.....	11
6	Lincs – Notice to Mariners.....	13
6.1	Lighting and Marking Status.....	13
6.2	Other Operations.....	13
7	Gunfleet Sands – Notice to Mariners .....	14
7.1	Lighting and Marking Status.....	14
7.2	Other Operations.....	14
7.2.1	Main Bearing Replacement.....	14
7.3	Cable exposure .....	15
8	Hornsea One – Notice to Mariners.....	16
8.1	Lighting and Marking Status.....	16
8.2	Other Operations.....	18
9	Hornsea Two – Notice to Mariners.....	19

9.1 Lighting and Marking Status..... 19  
 9.2 Other Operations..... 19  
 9.2.1 HOW02 Quarterly Near Shore Survey ..... 19

## 1 Introduction

Ørsted is an offshore wind farm owner and operator with ten operational wind farms in UK waters. Of these ten, the following offshore wind farms are located off the East Coast of England:

- Gunfleet Sands
- Westermost Rough
- Race Bank
- Lincs
- Hornsea One

The purpose of this monthly Notice to Mariners (NtM) is to ensure that mariners are aware of any non-routine operations across the East Coast assets that could pose a risk to other sea users. Safety is paramount to Ørsted and this notice should assist in ensuring that both mariners and the Ørsted operational team can operate safely offshore. This NtM will provide:

- A regular, clear and consistent overview of non-routine operations
- Updates relating to lighting and marking
- Key contact details
- Access to detailed site information and figures
- Clarity on when Safety Zones and recommended safe separation distances are in force or requested



This Notice to Mariners will not provide:

- Information relating to routine maintenance carried out by Crew Transfer Vessels (CTV) or Service Operation Vessels (SOV).
- Any information relating to export cables
- Any information relating to offshore wind farms currently in development, construction or not operated by Ørsted

### **Subsea Cables**

Subsea cables are installed across each offshore wind farm and are marked on the KIS ORCA charts referenced in Section 1.2. Please note the following advice from NP 100 The Mariners Handbook “Every care should be taken to avoid anchoring, trawling, fishing, dredging, drilling, or carrying out any other activity in the vicinity of cables which might damage them.” This warning is repeated on all admiralty charts.

### **Wind Farm Positional Data**

KIS ORCA Awareness Charts (including the layout and coordinates) and Fishing Plotter Files of the offshore assets referenced in this NtM can be found via the KIS ORCA website: <https://kis-orca.org/downloads/> Should mariners require further information or any data in a format that can be used in a plotter or other device, please contact the Company Fisheries Liaison Officer, listed in Section 2 below.

## 2 Key Contacts

For further information on any of the activities listed within this notice, please use the contact details listed below.

Site	Ørsted Mailbox/ Offshore Coordination	Fisheries Industry Representative
Race Bank	Phone: 07826 943808 Email: <a href="mailto:rowoffshorec@orsted.com">rowoffshorec@orsted.com</a>	Ady Woods Phone: 07468 898948 Email: <a href="mailto:firwoods@hotmail.com">firwoods@hotmail.com</a>
Westermost Rough	Phone: 07867 674941 Email: <a href="mailto:wroffshorec@orsted.com">wroffshorec@orsted.com</a>	Guy Pasco Phone: 07880 362082 Email: <a href="mailto:guy@seascopefisheries.co.uk">guy@seascopefisheries.co.uk</a>
Lincs	Phone: 07766443319 Email: <a href="mailto:lincsoffshorec@orsted.com">lincsoffshorec@orsted.com</a>	Ady Woods Phone: 07468 898948 Email: <a href="mailto:firwoods@hotmail.com">firwoods@hotmail.com</a>
Gunfleet Sands		Merlin Jackson Phone: 07989 520484 Email: <a href="mailto:merlinjackson@btinternet.com">merlinjackson@btinternet.com</a>
Hornsea One	Phone: 07775005465 Email: <a href="mailto:HOWoffshoreC@orsted.com">HOWoffshoreC@orsted.com</a>	Nick Garside Phone: 07538 827013 Email: <a href="mailto:nick.garside@live.co.uk">nick.garside@live.co.uk</a>
Hornsea Two	Phone: 07775005465 Email: <a href="mailto:HOW02offshoreC@orsted.com">HOW02offshoreC@orsted.com</a>	Nick Garside Phone: 07538 827013 Email: <a href="mailto:nick.garside@live.co.uk">nick.garside@live.co.uk</a>

### Company Fisheries Liaison Officer

The Ørsted Company Fisheries Liaison Officer can be contacted using the details below:

Lara Leonard  
Email: [LARLN@Orsted.com](mailto:LARLN@Orsted.com)

### 3 Notice to Mariners Summary:

Site	Lighting and Marking Status	Survey	Jack-Up Vessel	Other Works
Race Bank	OK	Yes	None	CXR Cable Inspection**
Westermost Rough	OK	Yes	Yes	Main Bearing replacement <sup>o*</sup>
Lincs	OK	None	None	None
Gunfleet Sands	None	None	Yes	Main bearing replacement <sup>o*</sup> Generator Exchange <sup>o*</sup>
Hornsea One	A04 marine lantern & fog signal.	None	None	None
Hornsea Two	OK	None	None	None

- \* Formal 500m safety zone in place
- <sup>o</sup> Licensable activity
- \*\* 500m safety distance requested
- \*\*\* 200m safety distance requested
- \*\*\*\* 250m safety distance requested

***Status of lighting & marking is correct at time of issue; any changes will be communicated through an updated version being issued.***

## 4 Race Bank – Notice to Mariners

### 4.1 Lighting and Marking Status


The lighting and/ or navigational warning systems are currently operational. No planned outages.

### 4.2 Other Operations

#### 4.2.1 Benthic Survey

The survey vessel Seren Las benthic survey still ongoing (waiting for weather windows), expect it to extend throughout November.

#### Vessel Information

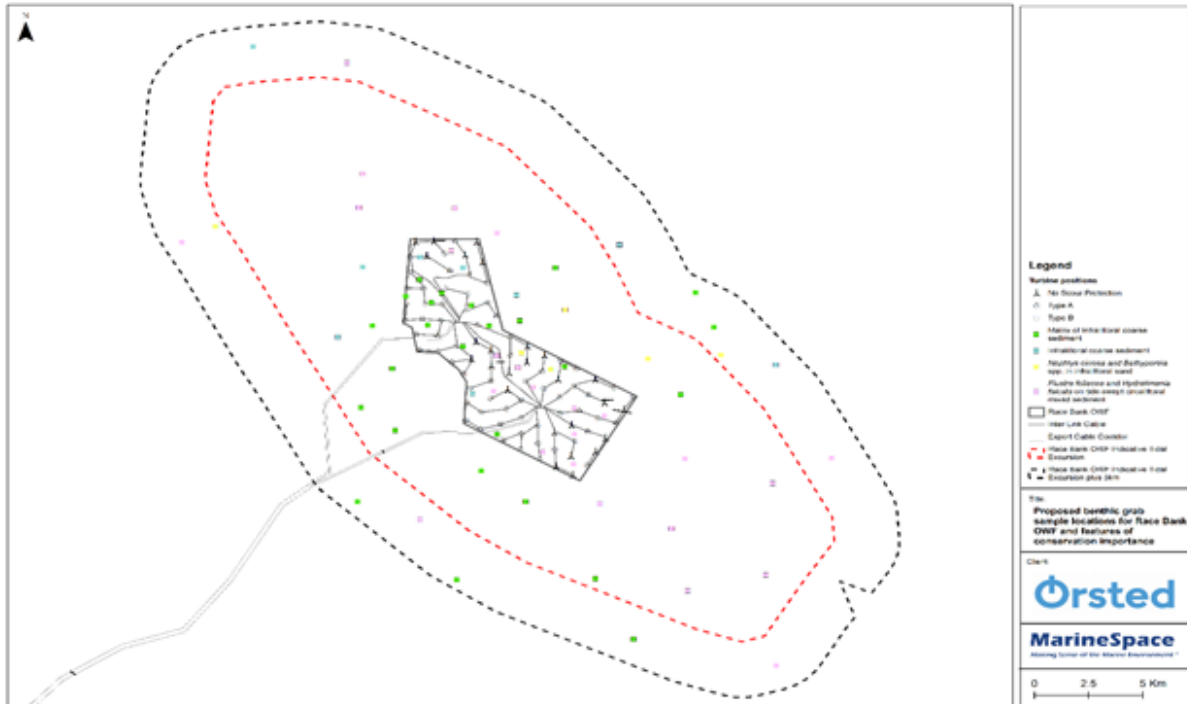
General Information		Vessel Picture
<b>Name</b>	Seren Las	
<b>Flag</b>	United Kingdom [GB]	
<b>Year Built</b>		
<b>MMSI</b>	235087047	
<b>Call Sign</b>	MDAH2	
Vessel Contact Details		
<b>Bridge</b>		
<b>Party Chief</b>		
<b>Email</b>		

WTG ID	Latitude	Longitude
A03	53 19 166N	00 46 392E
D06	53 18 087N	00 48 770E
E08	53 15 403N	00 48 960E
F05	53 15 548N	00 49 941E
G03	53 16 315N	00 50 659E
H06	53 14 550N	00 51 267E
J01	53 16 852N	00 52 107E
J03	53 15 876N	00 52 130E
<b>Export Cable Route</b>	See Below note	See Below note

Notes:

Text from the methodology: *At each of these, a cruciform of grab stations have been arranged with four grab stations at 150 m from the turbine on the cardinal points aligned to the dominant tidal flow and two further grab stations at 300 m distance aligned to the tidal flow.*

They will also be sampling outside of the array in the areas shown below and at locations along the export cable route.



#### 4.2.2 CXR Cable Inspection Work Scope



Start date: Window 21st to 24th November 2022

Duration of work scope: 1 day of Operations

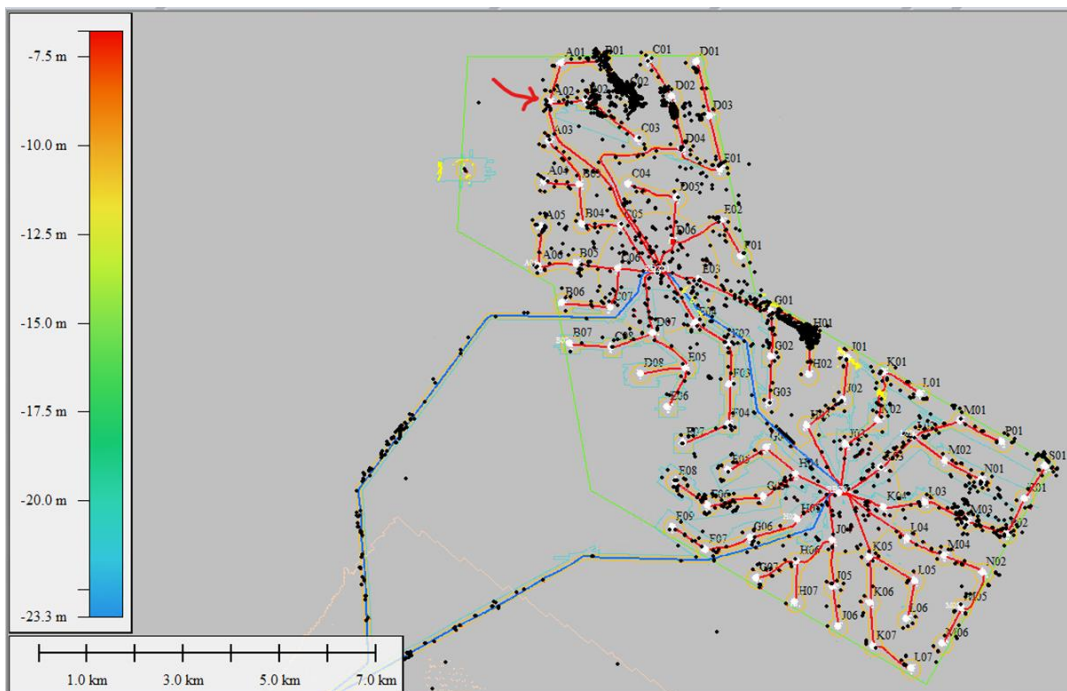
Description of work: ROV Inspection of cable from aperture to burial

Is this a licensed activity: CXR Cable Inspection Work Scope

Safety zone required. If Yes what distance? 500m minimum when ROV diving in water

General Information		Vessel Picture
<b>Name</b>	Glomar Worker	
<b>Flag</b>	Panama [PA]	
<b>Year Built</b>	2008	
<b>MMSI</b>	352110000	
<b>Call Sign</b>	3EKK8	
Vessel Contact Details		
<b>Bridge</b>	+31 852088024	
<b>Captain</b>	Maksym Zbroy	
<b>Email</b>	bridge@glomarworker.com	

WTG ID	Degrees, Decimal Minutes	
	Latitude	Longitude
<b>A02</b>	53°19'36.1"N	000°46'23.5"E



## 5 Westermost Rough – Notice to Mariners

### 5.1 Lighting and Marking Status


The lighting and/ or navigational warning systems are currently operational. No planned outages.

### 5.2 Other Operations

On the 12<sup>th</sup> November, the Racebank Service Operation Vessel (SOV) will be on the perimeter of Westermost Rough with the CTV's Windcat 24 & Windcat 32 supporting routine operations. The SOV will not be entering site.


#### 5.1.1 WMR Project work


Around the 12th of November, the EDDA PASSAT (Raceback SOV) will be positioned outside of the Westermost Rough Windfarm for a period of upto 5 weeks, departing only for Port Call. To assist in WMR Campaign catch up, the project will be supported by the Manor Vulcan

General Information		Vessel Picture
<b>Name</b>	Manor Vulcan	
<b>Flag</b>	United Kingdom [GB]	
<b>Year Built</b>	2022	
<b>MMSI Number</b>	232042488	
<b>Call Sign</b>	MLRK6	
Vessel Contact Details		
<b>Bridge</b>		
<b>Party Chief</b>		
<b>Email</b>	<a href="mailto:mj@mreltd.co.uk">mj@mreltd.co.uk</a>	

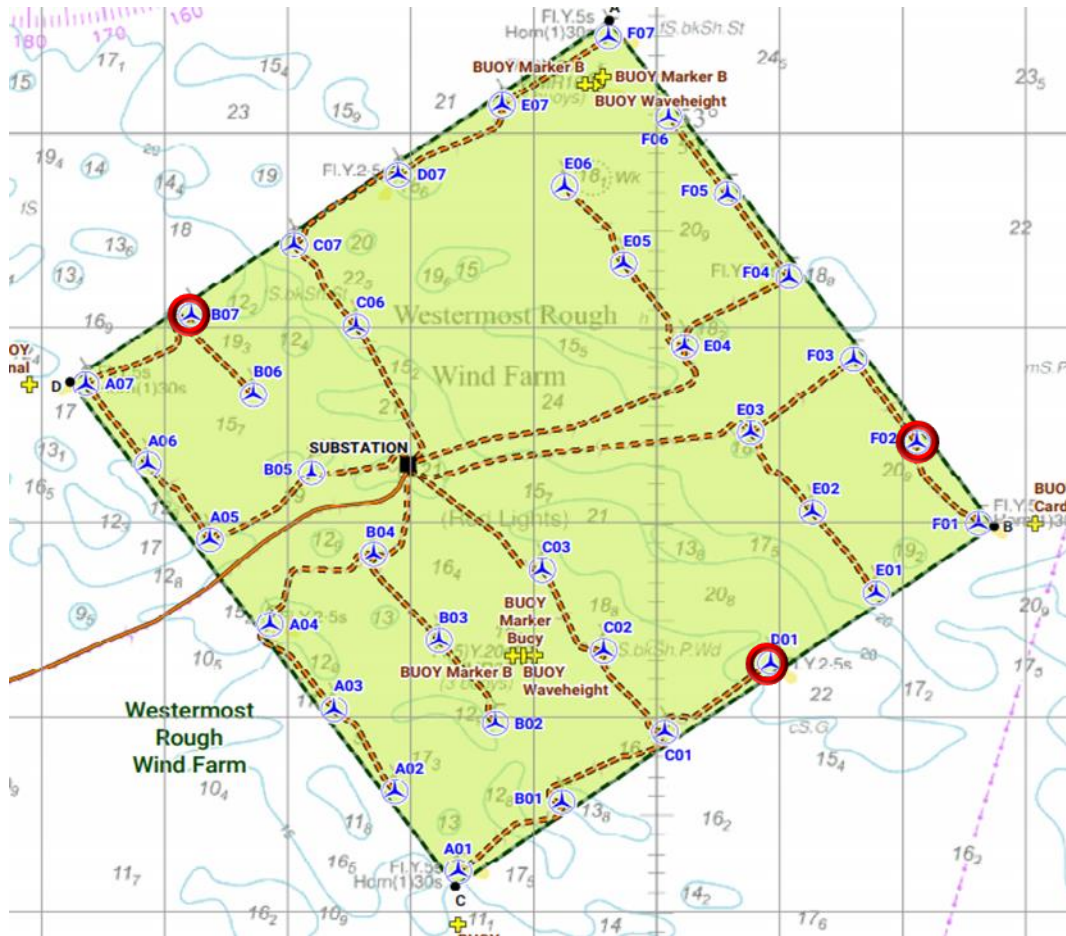
### 5.1.2 WMR Main Bearing Replacement

Main Bearing Exchange Campaign on Westermost Rough at locations B07 / D01 & F02. Campaign is estimated to start on the 8th December 2022 for 30 days in total. A 500m exclusion zone will be required whilst the Wind Server is in position at the turbines and whilst jacking up

General Information		Vessel Picture
<b>Name</b>	Wind Enterprise	
<b>Flag</b>	Denmark	
<b>Year Built</b>		
<b>MMSI Number</b>	219370000	
<b>Call Sign</b>	OZTU2	
Vessel Contact Details		
<b>Bridge</b>	+45 29 81 58 85	
<b>Party Chief</b>	Capt. Jakob Skak Nielsen	
<b>Email</b>	<a href="mailto:master.windenterprise@ziton.eu">master.windenterprise@ziton.eu</a>	

General Information		Vessel Picture
<b>Name</b>	Fob Swath 5	
<b>Flag</b>	Denmark	
<b>Year Built</b>	2013	
<b>MMSI Number</b>	219464000	
<b>Call Sign</b>	OUXA2	
Vessel Contact Details		
<b>Bridge</b>	+45 30 32 66 14	
<b>Party Chief</b>		
<b>Email</b>	<a href="mailto:Fob5@odfjellwind.com">Fob5@odfjellwind.com</a>	

WTG ID	Degrees, Decimal Minutes	
	Latitude	Longitude
<b>B07</b>	53.8139	000.1035
<b>D01</b>	53.7880	000.1820
<b>F02</b>	53.8009	000.1878



## **6 Lincs – Notice to Mariners**

### **6.1 Lighting and Marking Status**

The lighting and/ or navigational warning systems are currently operational. No planned outages.

### **6.2 Other Operations**

Nothing planned.

## 7 Gunfleet Sands – Notice to Mariners

### 7.1 Lighting and Marking Status


A04 has temporary marine lanterns installed. All other Aids to navigation are working.


### 7.2 Other Operations

#### 7.2.1 Main Bearing Replacement

The Jack up Vessel Wind Server is expected on site towards the middle of December, however this is subject to change due to weather conditions. The scope is to carry out main bearing replacements on locations E04, F04 & F08. A 500m exclusion zone will be required whilst the Wind Server is in position at the turbines and whilst jacking up. CTV Eden Rose

#### Vessels

General Information		Vessel Picture
Name	WIND SERVER	
Flag	Denmark [DK]	
Year Built	2014	
MMSI Number	219615000	
Call Sign	OWLB2	
Vessel Contact Details		
Bridge		
Party Chief		
Email	<a href="mailto:projects@ziton.eu">projects@ziton.eu</a>	

General Information		Vessel Picture
Name	Eden Rose	
Flag	UK	
Year Built		
MMSI Number	235092732	
Call Sign	2FNN5	
Vessel Contact Details		
Bridge		
Party Chief		
Email	<a href="mailto:edenrose@tidal-transit.com">edenrose@tidal-transit.com</a>	

WTG ID	Long	Lat
E04	001° 13.96947023' E	51° 43.66431166' N
F04	001° 14.14774691' E	51° 43.45741667' N
F08	001° 16.772' E	51° 44.481' N

### 7.3 Cable exposure

There are subsea cables currently exposed as shown on the below chart and coordinates

WGS84 Degrees, decimal Minutes						
ID	ArrayCableID	Length_m	StartCoord_Longitude	StartCoord_Latitude	EndCoord_Longitude	EndCoord_Latitude
GFS_MBES_TO_01-UnidentifiedOther	F08-F09	13.4	1° 17.383' E	51° 44.721' N	1° 17.396' E	51° 44.723' N
GFS_MBES_TO_02-CableExposure	F08-F09	790.93	1° 16.787' E	51° 44.486' N	1° 17.376' E	51° 44.718' N
GFS_MBES_TO_03-CableExposure	F07-F08	533.19	1° 16.562' E	51° 44.401' N	1° 16.726' E	51° 44.466' N
GFS_MBES_TO_04-CableExposure	F06-F07	25.25	1° 16.059' E	51° 44.203' N	1° 16.075' E	51° 44.210' N

## 8 Hornsea One – Notice to Mariners

### 8.1 Lighting and Marking Status

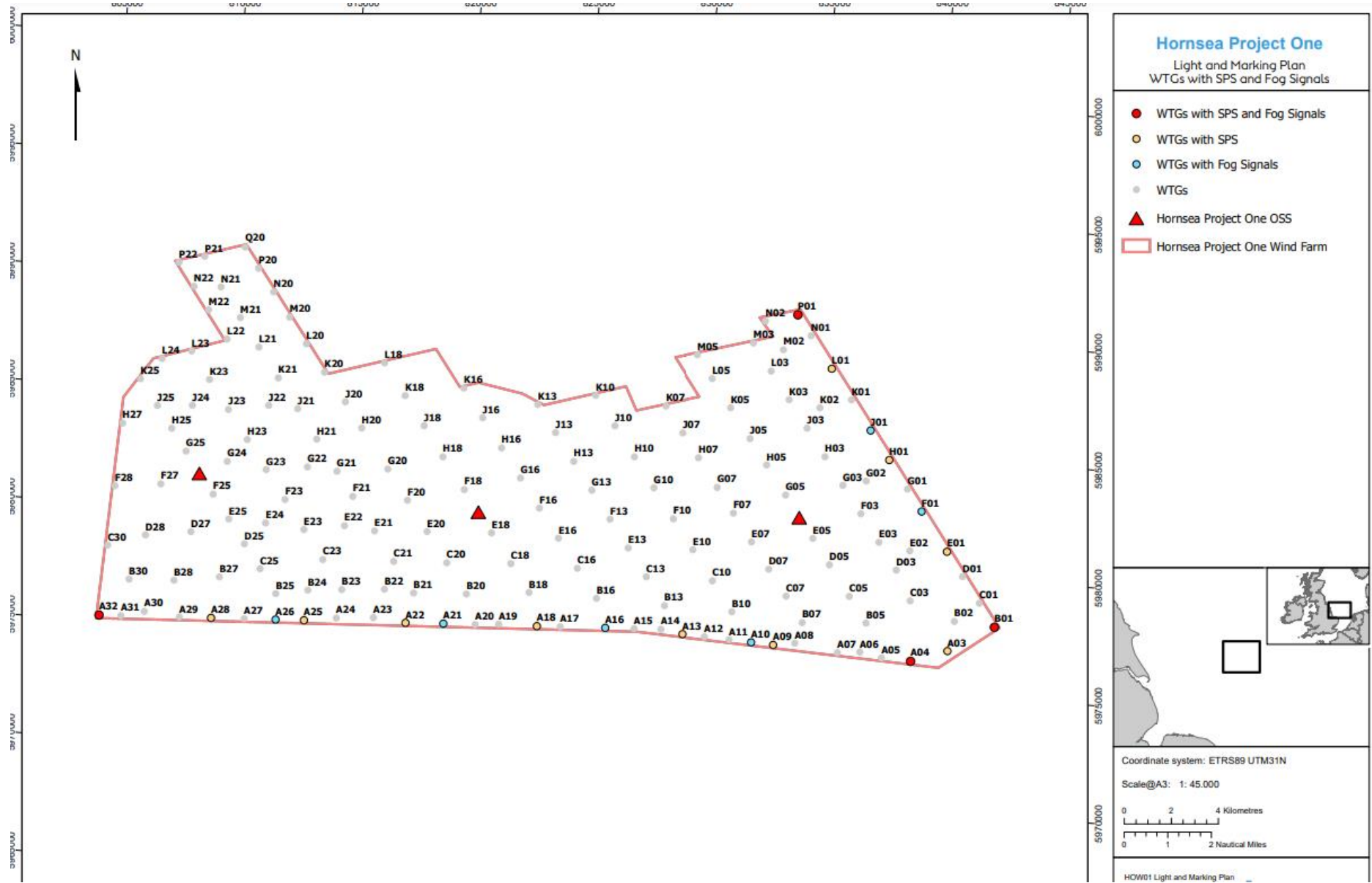
A04 marine lanterns & foghorn are currently inoperative. There are no other planned outages.

Mariners are advised that the marine navigation lighting and foghorns on turbines situated on the Hornsea Project One / Two adjoining perimeter have now been extinguished. Marine navigation lighting will now alight the combined perimeter of Hornsea Project One and Two.

Please see the table below showing the locations where the foghorns/marine navigation lighting has been discontinued (indicated with an X)

<b>Turbine</b>	<b>Marine Navigation Lights</b>	<b>Foghorns</b>
<b>K25</b>	X	
<b>Q20</b>	X	X
<b>C30</b>	X	X
<b>H27</b>	X	X
<b>P22</b>	X	X
<b>L20</b>		X
<b>K16</b>		X
<b>K10</b>		X
<b>M05</b>		X





## **8.2 Other Operations**

Nothing planned.

## 9 Hornsea Two – Notice to Mariners

### 9.1 Lighting and Marking Status

Trinity house are due to remove the construction buoys between 28<sup>th</sup> – 30<sup>th</sup> Nov  
The lighting and/ or navigational warning systems are currently operational. No planned outages.

### 9.2 Other Operations

#### 9.2.1 HOW02 Quarterly Near Shore Survey

The Spectrum 1 will be conducting a survey on the HOW02 export cable between the 5<sup>th</sup> and 10<sup>th</sup> of December, for 1 day only.

General Information		Vessel Picture
Name	Spectrum 1	
Flag	UK	
Year Built	2009	
MMSI Number	235075021	
Call Sign	2CQX3	
Vessel Contact Details		
Bridge	+44 (0) 7538565561	
Party Chief	TBA	
Email		