

Notice to Mariners No 10 / 2022



Van Oord Sinker line towage/ Early Information Notice

6th October 2022

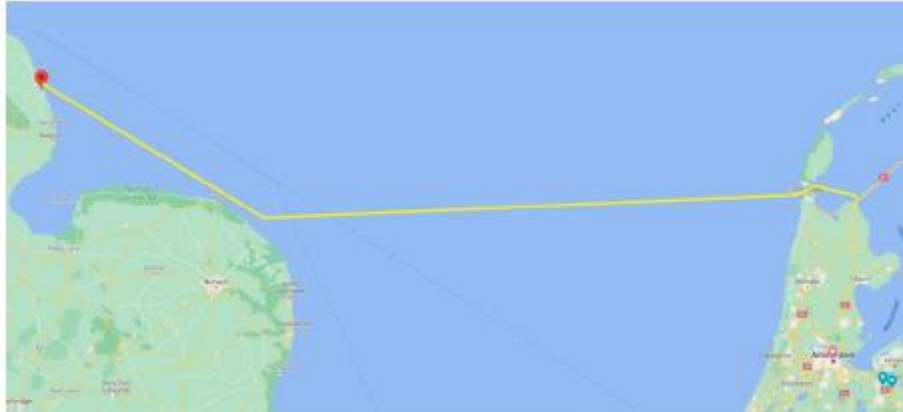
Van Oord would like to inform mariners that they intend to launch a 638m sinker pipe from Wollabank and tow it to the Netherlands. These works are due to commence on or around the 9th of October 2022 along the North East Lincolnshire Coastline between Wollabank and Anderby Creek. This pipe was used for the dredging works completed earlier in the year.

Van Oord will follow best safe working practices at all times)

As a result of COVID 19 restrictions the Normal offshore Fisheries Liaison Officer Dave Hardstaff will work from shore and be the main point of contact.

Email: flo1@smchse.com

Mobile: 07906 025240

Towage of sinker Works Outline Planning 2022	
Start Date	8 th October Prepare sinker line for towage on Wollabank
Launch and tow	9 th October commence towing of the sinker Line from Wollabank – 11 th Placing the Sinker Line (date flexible around weather conditions) in Petten, Netherlands
Duration	Approximately 36 to 40 hours depending on the weather.
Vessels (TBC)	'Multicat Panda–and Shoalbuster MTS Valiant
Sailing Route for towage of the Sinker Line	 A map showing the sailing route for the towage of the sinker line. The route starts at Wollabank on the North East Lincolnshire Coastline in the UK and extends eastward across the North Sea to Petten in the Netherlands. A yellow line indicates the path of the 638m sinker pipe, which is shown as a thin line in the water and a thicker line on land. A red dot marks the starting point at Wollabank.



Notice to Mariners No 10 / 2022



Van Oord Sinker line towage/ Early Information Notice

6th October 2022

1.1 Current Vessel Details for the tow out and installation of the sinker line.

Name: Type	Call Sign	Image
Shoal buster Tug MTS Valiant	PDQG	 A photograph of the MTS Valiant, a red and white shoal buster tugboat, operating on a body of water. The boat has 'MTS VALIANT' written on its side and is pulling a yellow buoy.
Multicat - Panda	PCOA	 A photograph of the Multicat Panda, a large orange and white multicat vessel equipped with two yellow excavators, operating on a body of water.

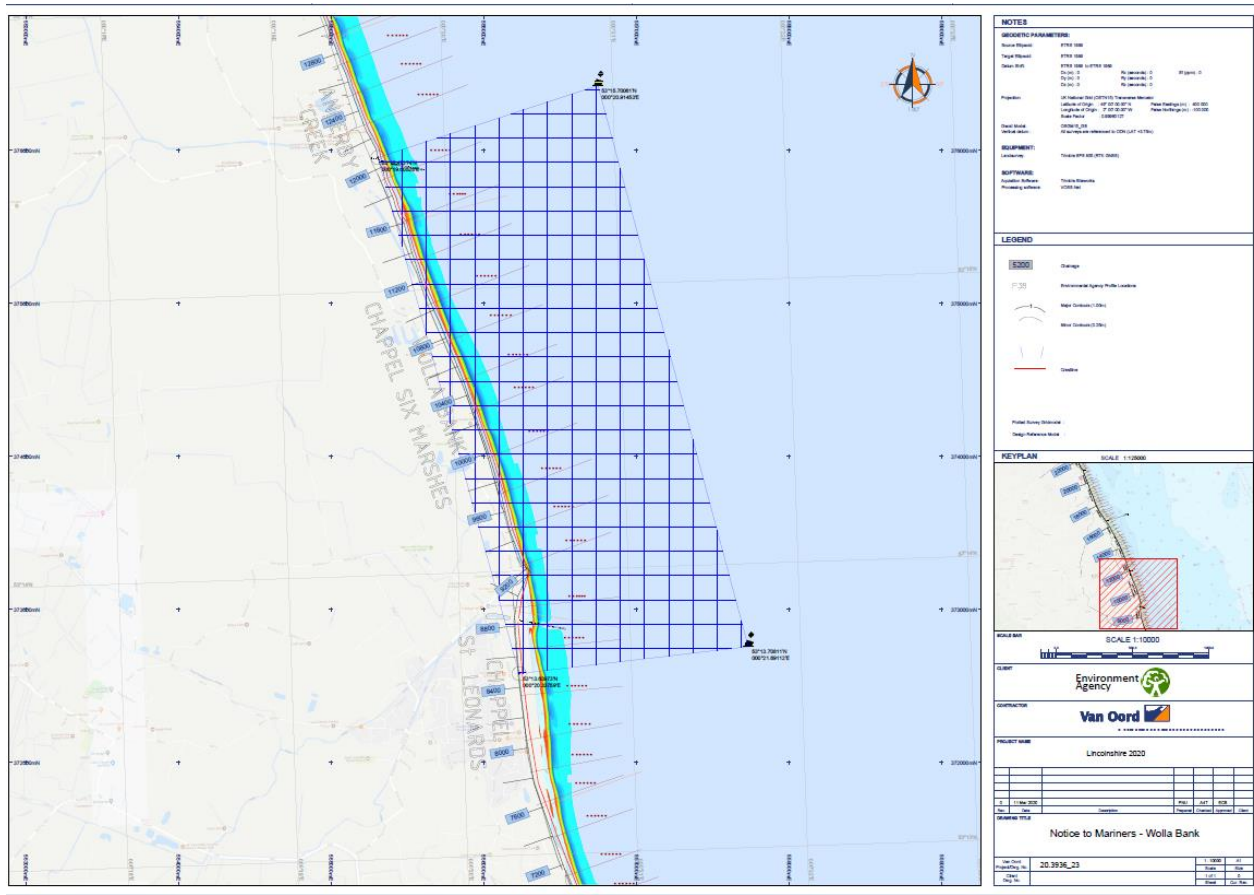
The vessel requests a **500m safety zone** and can be contacted on VHF 16 when on location.

Notice to Mariners No 10 / 2022



Van Oord Sinker line towage/ Early Information Notice

6th October 2022



Area 5 Wollabanks & Chapel Six Marshes

Point	Latitude	Longitude
01	53 15.47 N	000 19.60 E
02	53 15.70 N	000 20.91 E
03	53 13.70 N	000 21.69 E
04	53 13.63 N	000 20.33 E

Fisheries Liaison Contact



Notice to Mariners No 10 / 2022

Van Oord Sinker line towage/ Early Information Notice

6th October 2022

Specialist Marine Consultants is the appointed Fisheries Liaison Coordinator and can be contacted as follows:

Ian Coates – Fisheries Liaison Co-ordinator
Specialist Marine Consultants Ltd
+44 (0) 07775597478
Email: ian@smchse.com

Any day to day information regarding movements and fisheries interactions please contact:
Dave Hardstaff- Fishing Industry Representative - Based on land due to COVID 19 restrictions.
Email: flo1@smchse.com
Mobile: 07906 025240

Further updates will be provided as required.