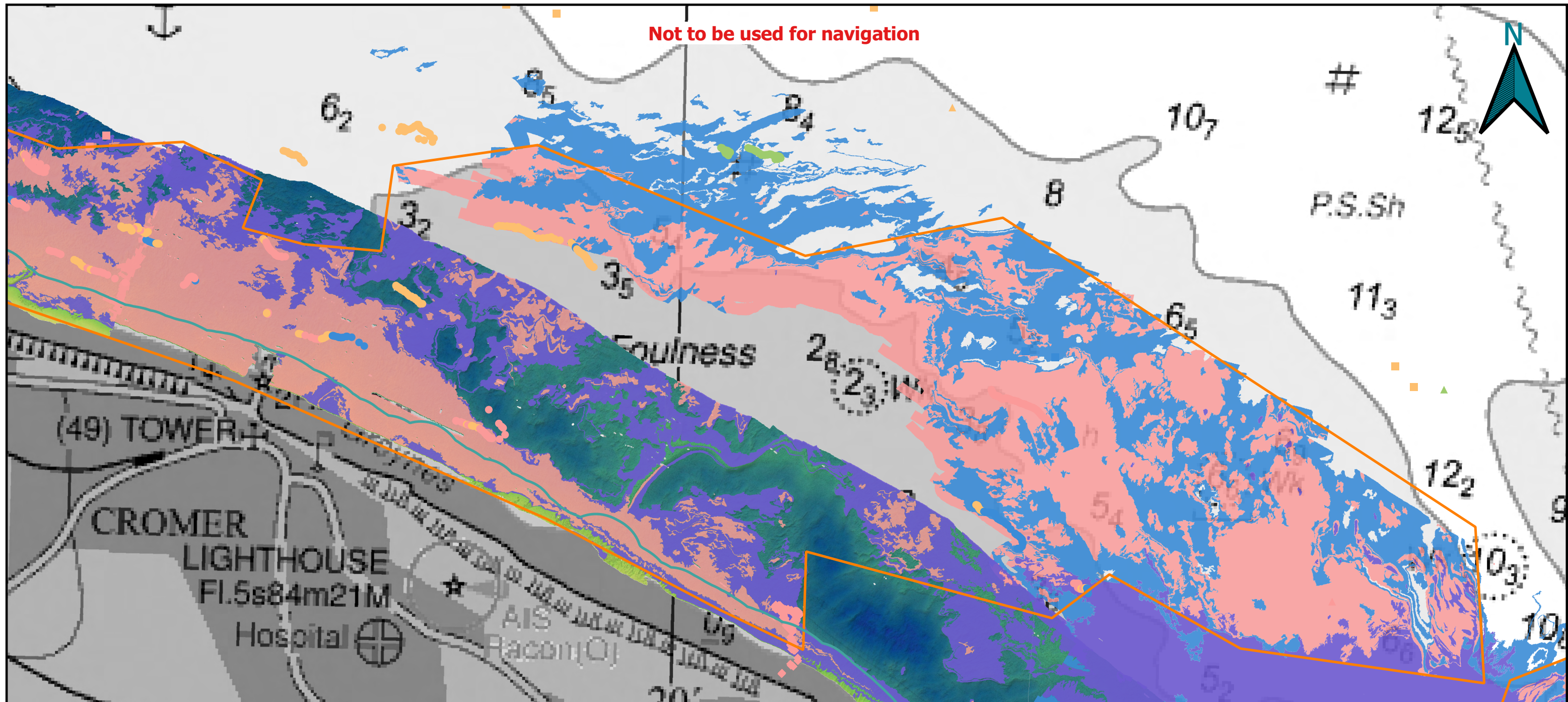


Not to be used for navigation



Rugged Chalk Review 2022 - Figure 3

- Cromer Shoal Chalk Beds MCZ
- 2022 Rugged Chalk Area (proposed)

- Data source
- EIFCA 2021
  - EIFCA 2019
  - EA 2019
  - Cefas 2014
  - Dive survey 2022

- Chalk category
- Absent
  - Pavement (or mixed including pavement but not rugged)
  - Pebble/cobble
  - Rugged (or mixed including rugged)

- Multibeam data (EA, 2017)
- 
- Rugosity analysis (Cefas 2021)
- Chalk
  - Rugged Chalk
  - Uncertain



Date: 14/12/22; Drawn by: SH; Projection: WGS 84; Data: EIFCA, NE, EA, Cefas, JNCC, Evidence Group

(c) British Crown and OceanWise 2022. All rights reserved. Licence No.EK001-20180110. This product has been derived in part from material obtained from the UK Hydrographic Office with the permission of the UK Hydrographic Office, Her Majesty's Stationery Office and other relevant authorities.

