

NOTICE TO MARINERS



DOGGER BANK OFFSHORE WIND FARM

DATE OF ISSUE:	06/05/2023
NOTICE TO MARINER NUMBER	LF500013-MIP-DOG-NOT-0018 Rev004

Dogger Bank A Foundation Installation Campaign

LOCATION DESCRIPTION		Dogger Bank A Offshore Windfarm
COORDINATES WGS 84	DBA OWF	See Table 1 below
START DATE/TIME		26/09/2022
END DATE/TIME		Q3 2023

Description of Hazard/Operation

The Offshore installation vessel, **HLV Seaway Strashnov**, and the Heavy Lift Crane Vessel, **Jumbo Fairplayer** will install offshore wind turbine foundations, within the Dogger Bank A construction area. **HLV Seaway Strashnov** will install monopiles, and the Crane Vessel, **Jumbo Fairplayer**, will install foundation transition pieces to the mono-piled locations.

The works will commence on the 26th of September 2022, continuing until approximately Q3 2023. The works will be continuous 24 hours a day. A chart of the DBA construction area and the foundation locations are provided below. A running list of the next locations to be installed and completed foundation locations are presented in the Weekly Notice of Operations.

The installed monopiles will be marked with temporary lighting with the following characteristics:

- Flashing (Fl) Yellow (Y) 2.5 seconds (s)
- IALA Availability Category 2 (not less than 99.0%)
- 360° visibility – up to two lights per structure may be used to achieve this
- At least 2 nm range.

During operations, the **HLV Seaway Strashnov** and the **Jumbo Fairplayer** will be restricted in ability to manoeuvre as defined under COLREGs (International Regulations for Preventing Collisions at Sea 1972) and will display the appropriate day shapes and lights. The vessels will also transmit an Automatic Identification System (AIS) message.

During operations, a Statutory Safety zone of 500m radius will be in place around the **HLV Seaway Strashnov** and the **Jumbo Fairplayer** during the installation of foundations. The safety zones will be monitored by a guard vessel. The primary response will be to warn passing traffic of the ongoing works and any active safety zones, and to alert any vessels where an infringement may occur or has occurred.

Contact Details

Marine Coordination Contact	Duty Marine Coordinator Tel: +44 (0) 7586 332078 gm_dbmcc@equinor.com
Fisheries Liaison Officer (FLO) CONTACT	Alex Winrow-Giffin, Brown & May Marine Ltd Alex@brownmay.com

NOTICE TO MARINERS

DOGGER BANK WIND FARM

	<p>Tel: 01379 870181 Mob: 07760 160039 Zoë Lawrence - Brown & May Marine Ltd zoe@brownmay.com Mob: 07923 138175</p>
Vessel Shore Contact	<p>Arno van Graafeiland Seaway 7 arno.vangraafeiland@Subsea7.com Tel +31 79 363 78 70 Mobile +31 61 44 80 696</p>

Supporting Information

Vessel – HLV Seaway Strashnov	Contact Details	
	C/S	5BNL2
	MMSI/IMO	212905000 / 9452701
	Vessel Details	
	Length	183m
	Beam	47.0m
	Draft	14m
	Vessel Contact	SeawayStrashnov.Captain@Subsea7.com

Vessel – Jumbo Fairplayer	Contact Details	
	C/S	PHPU
	MMSI/IMO	245554000 / 9371579
	Vessel Details	
	Length	144m
	Beam	26m
	Draft	8.1m
	Vessel Contact	ymo@jumbomaritime.nl

Table1: Coordinates for DBA Construction Area

Latitude (WGS 84)	Longitude (WGS 84)
54° 50.526'N	001° 37.141'E
54° 50.630'N	002° 10.286'E
54° 48.815'N	002° 14.689'E
54° 39.162'N	001° 58.695'E
54° 44.216'N	001° 37.550'E

NOTICE TO MARINERS

DOGGER BANK WIND FARM

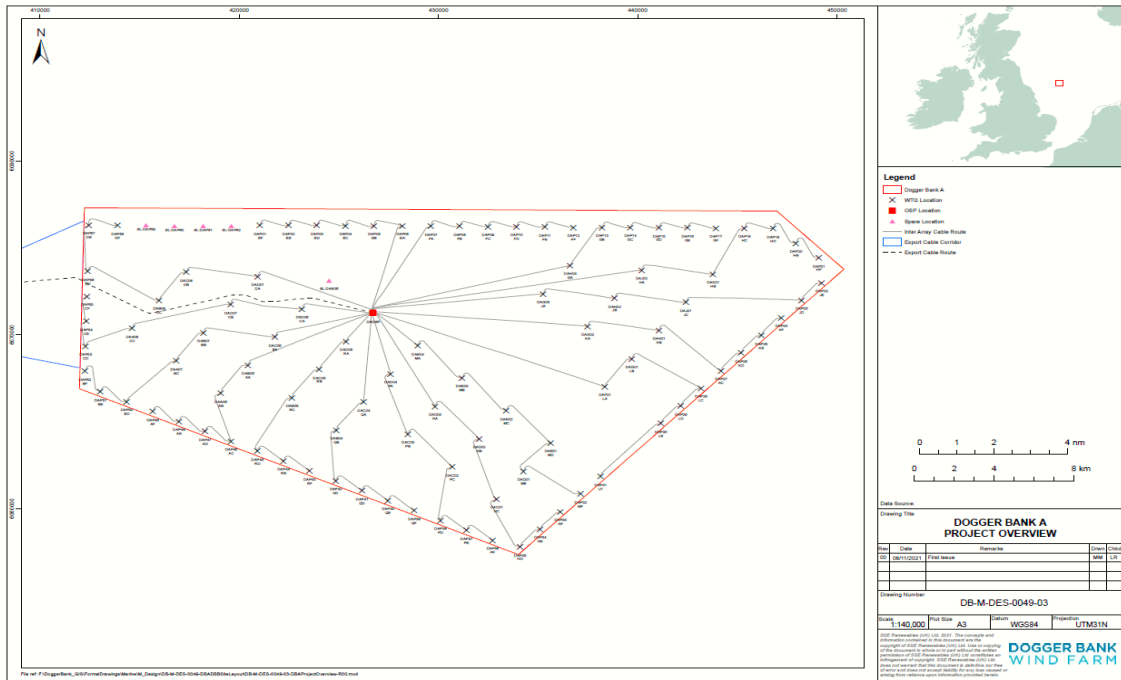


Figure 1: Dogger Bank A OWF WTG Layout

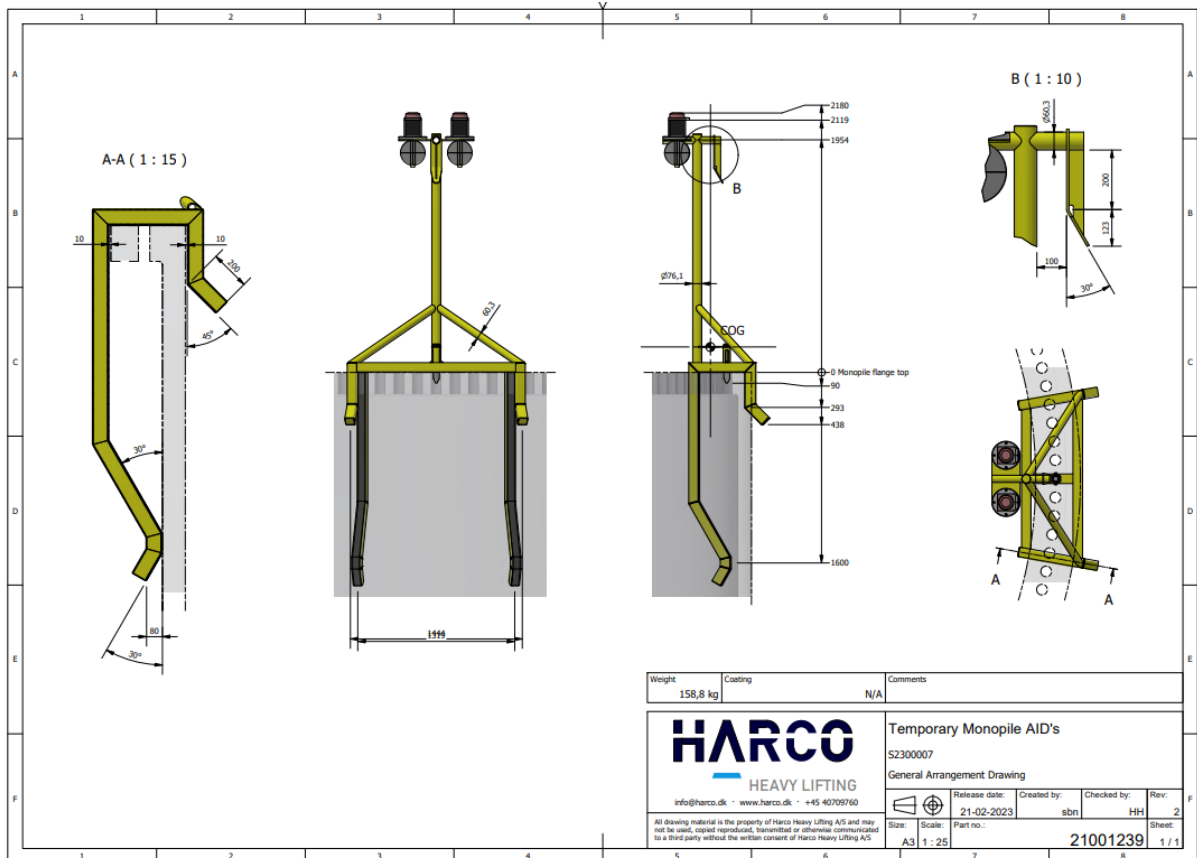


Figure 2: Monopile Aid to Navigation Marking



Figure 3: Photograph of installed Monopile showing temporary Aid to Navigation Marking