

Enclosure 1 – Proposed closed areas

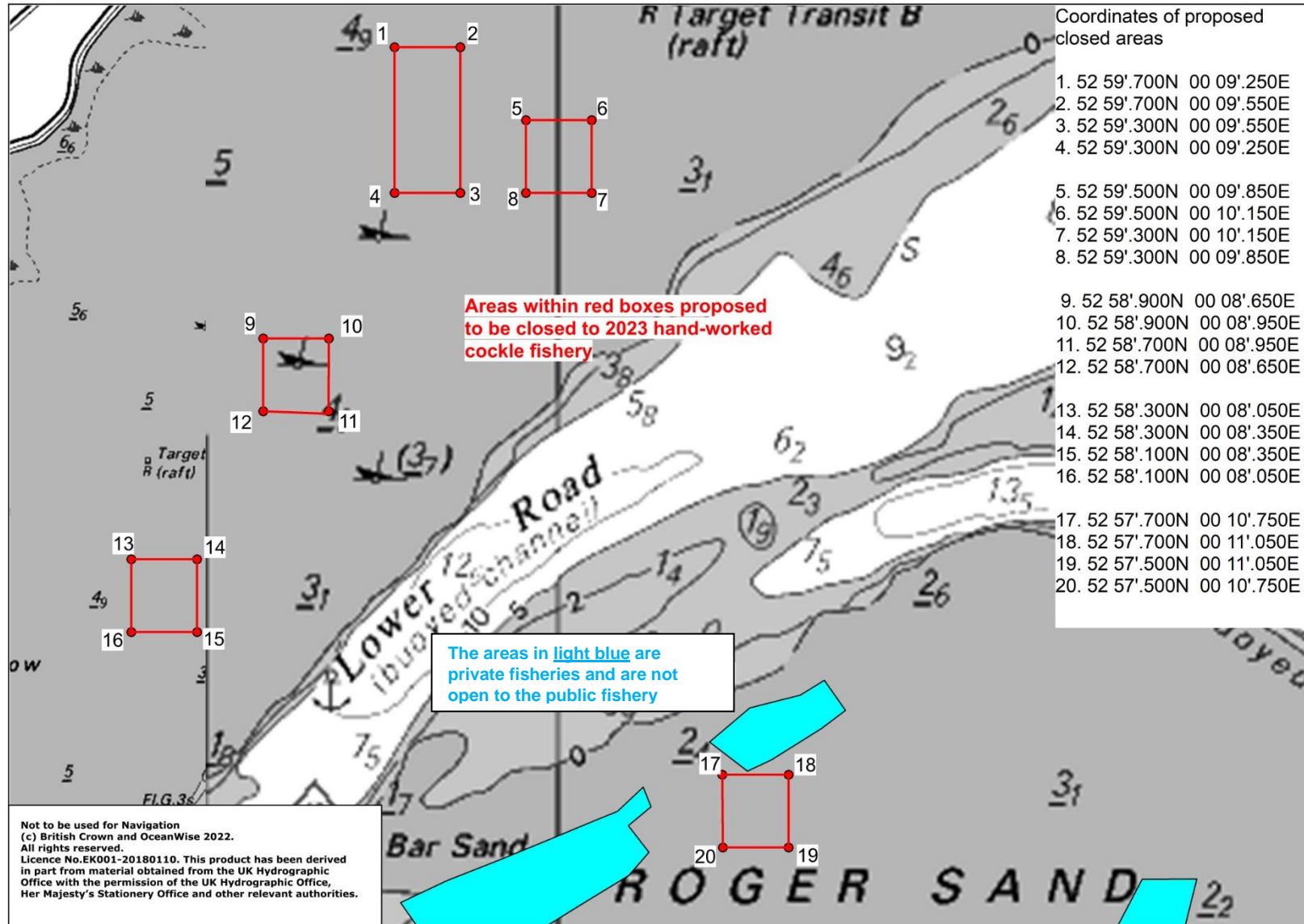


Chart 1 – Positions of closures on Butterwick and Roger sands to protect Year-0 juvenile cockles

Enclosure 1 – Proposed closed areas

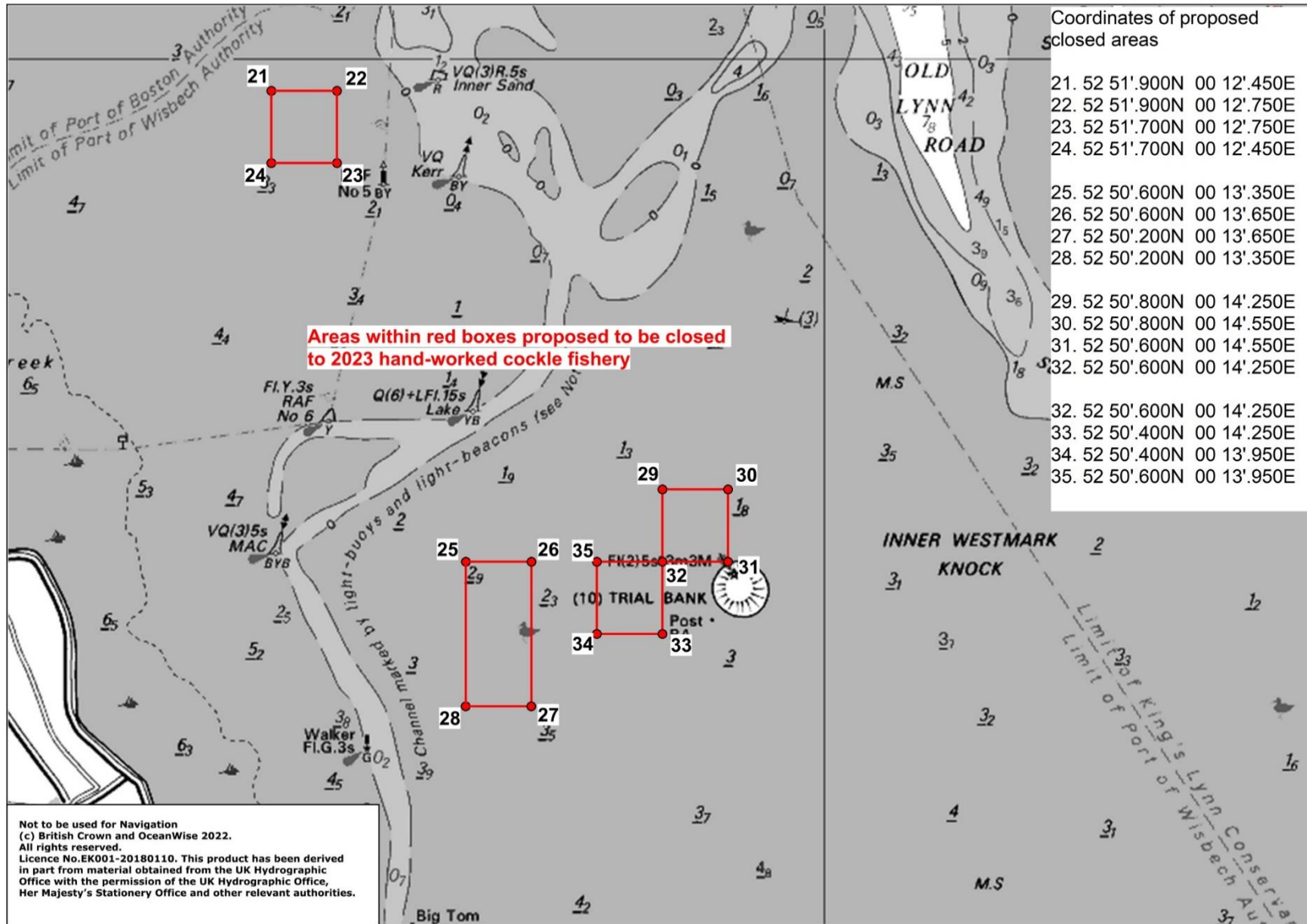


Chart 2 – Positions of closures on Holbeach and IWMK sands to protect Year-0 juvenile cockles

Enclosure 1 – Proposed closed areas

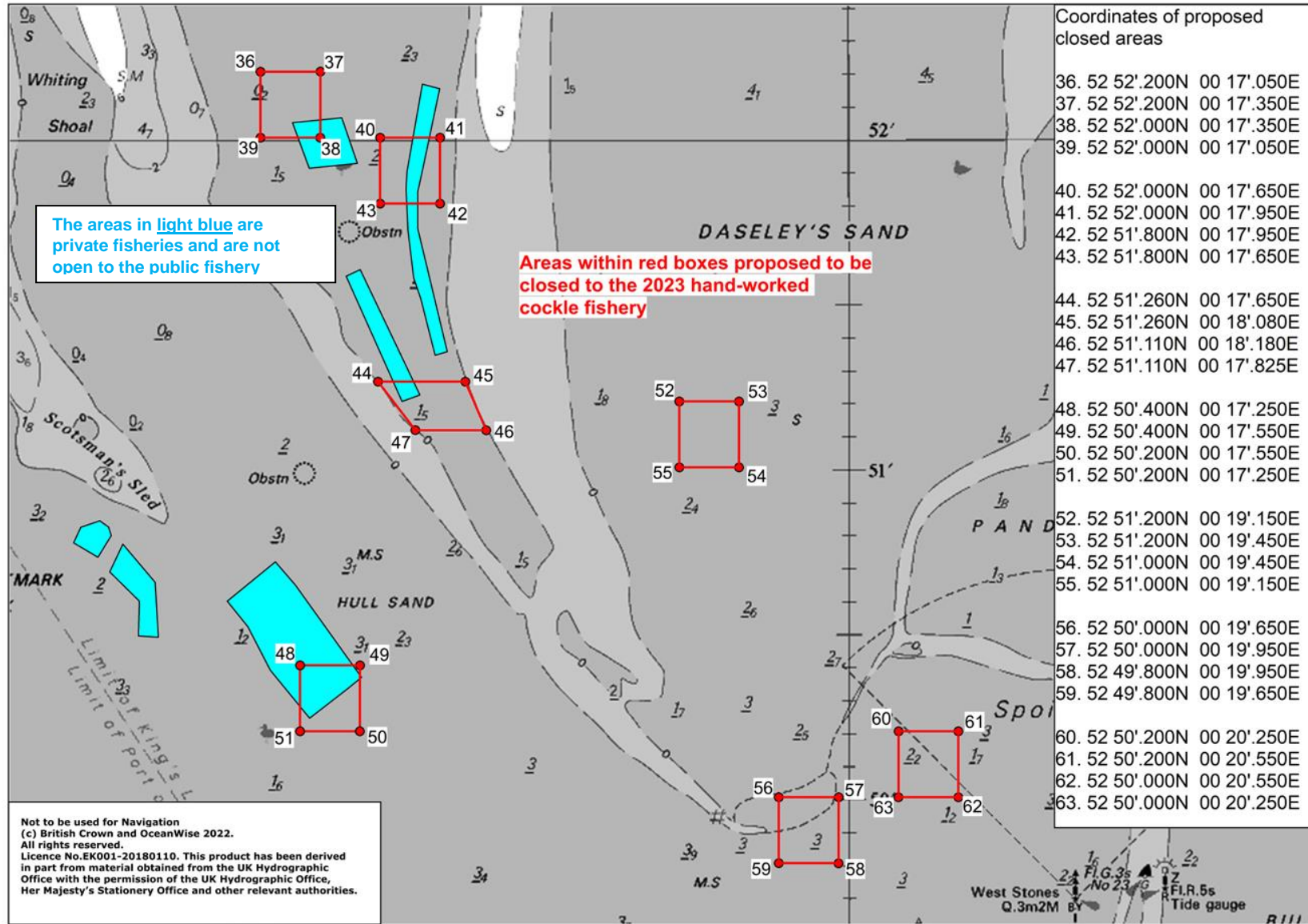


Chart 3 – Positions of closures on Breast, Thief and Daseley's sands to protect Year-0 juvenile cockles

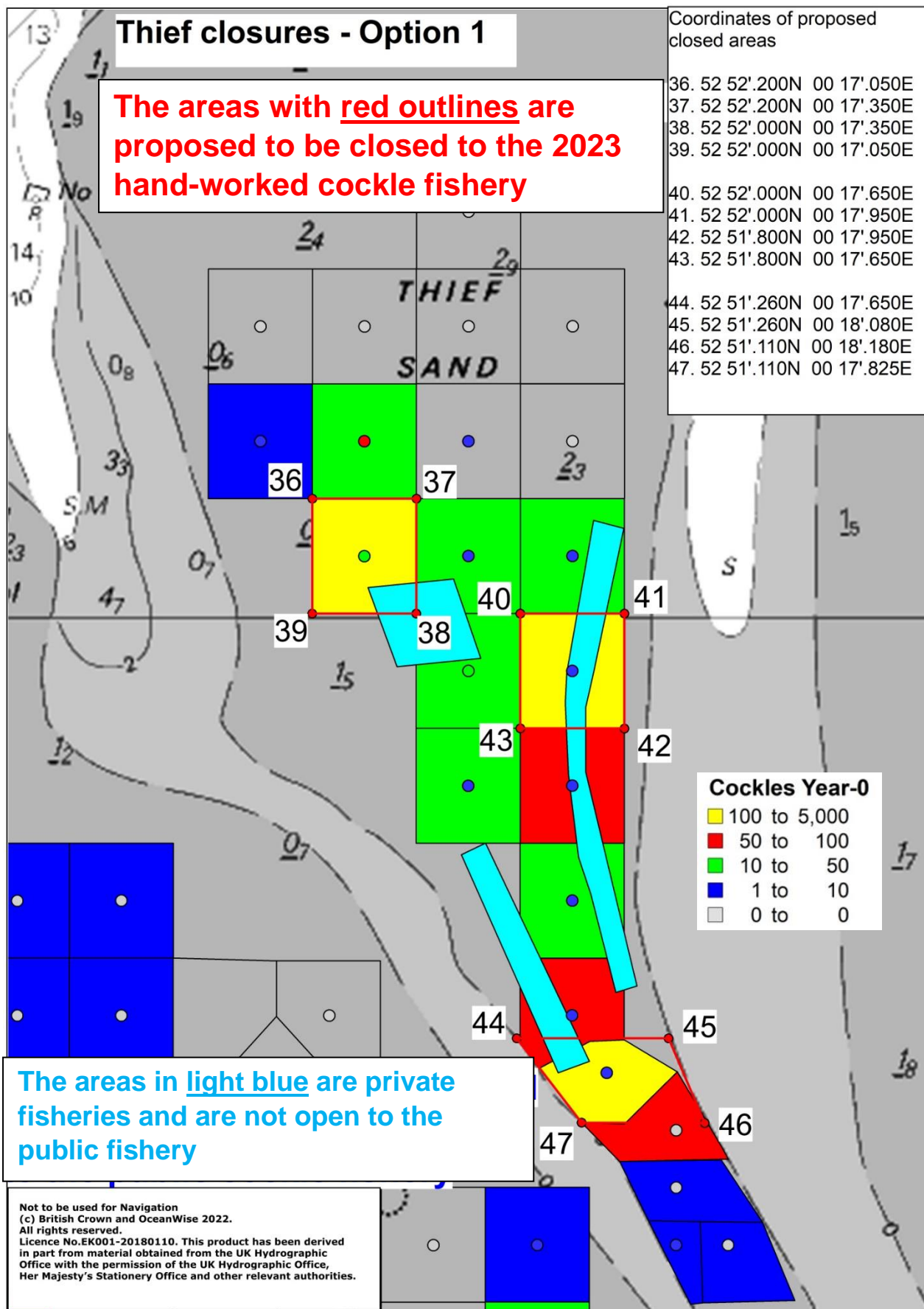


Chart 4 – Option 1 – Minimal closures on the Thief Sand

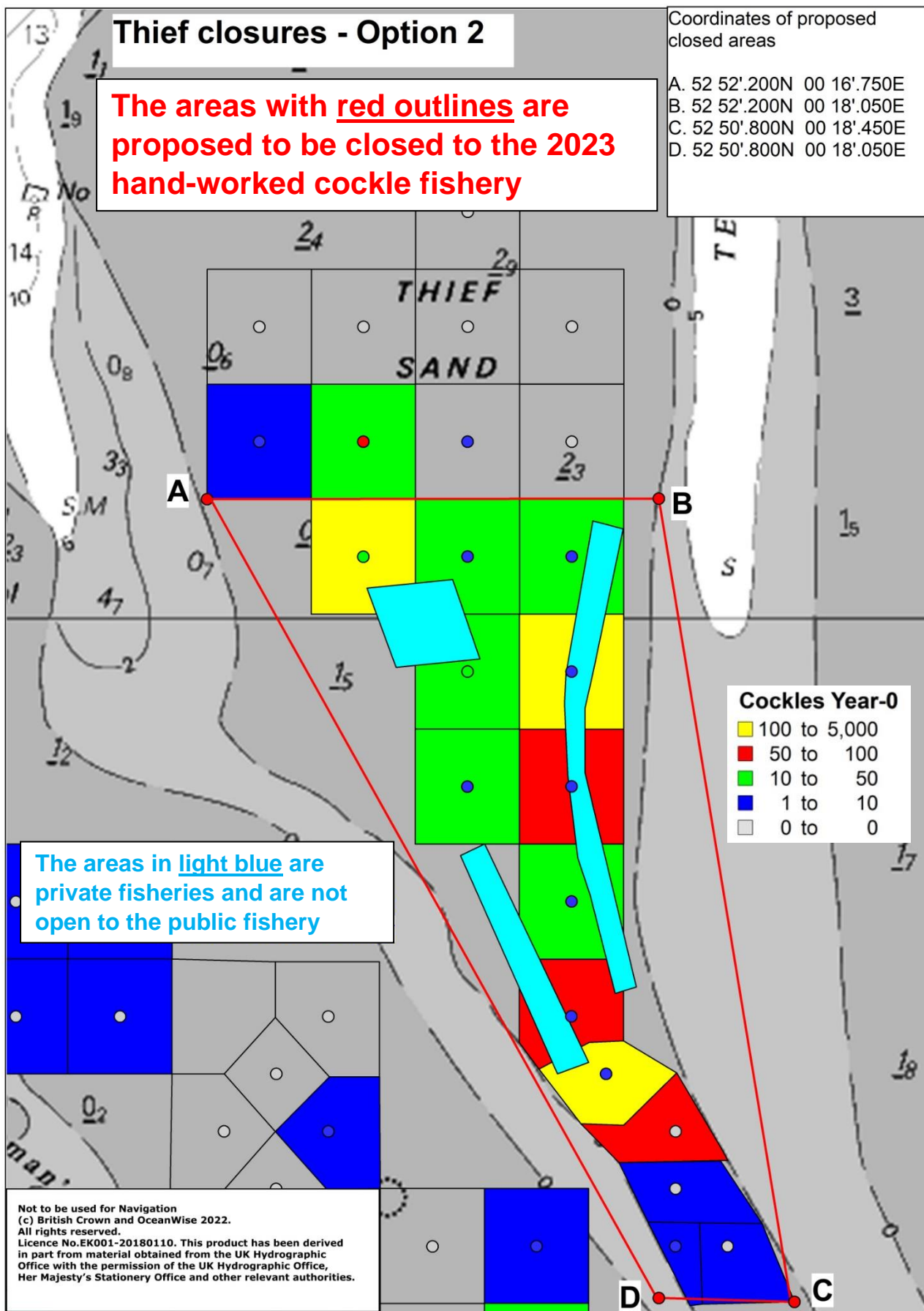


Chart 5 – Option 2 – Single, large closure on the Thief Sand

Enclosure 1 – Proposed closed areas

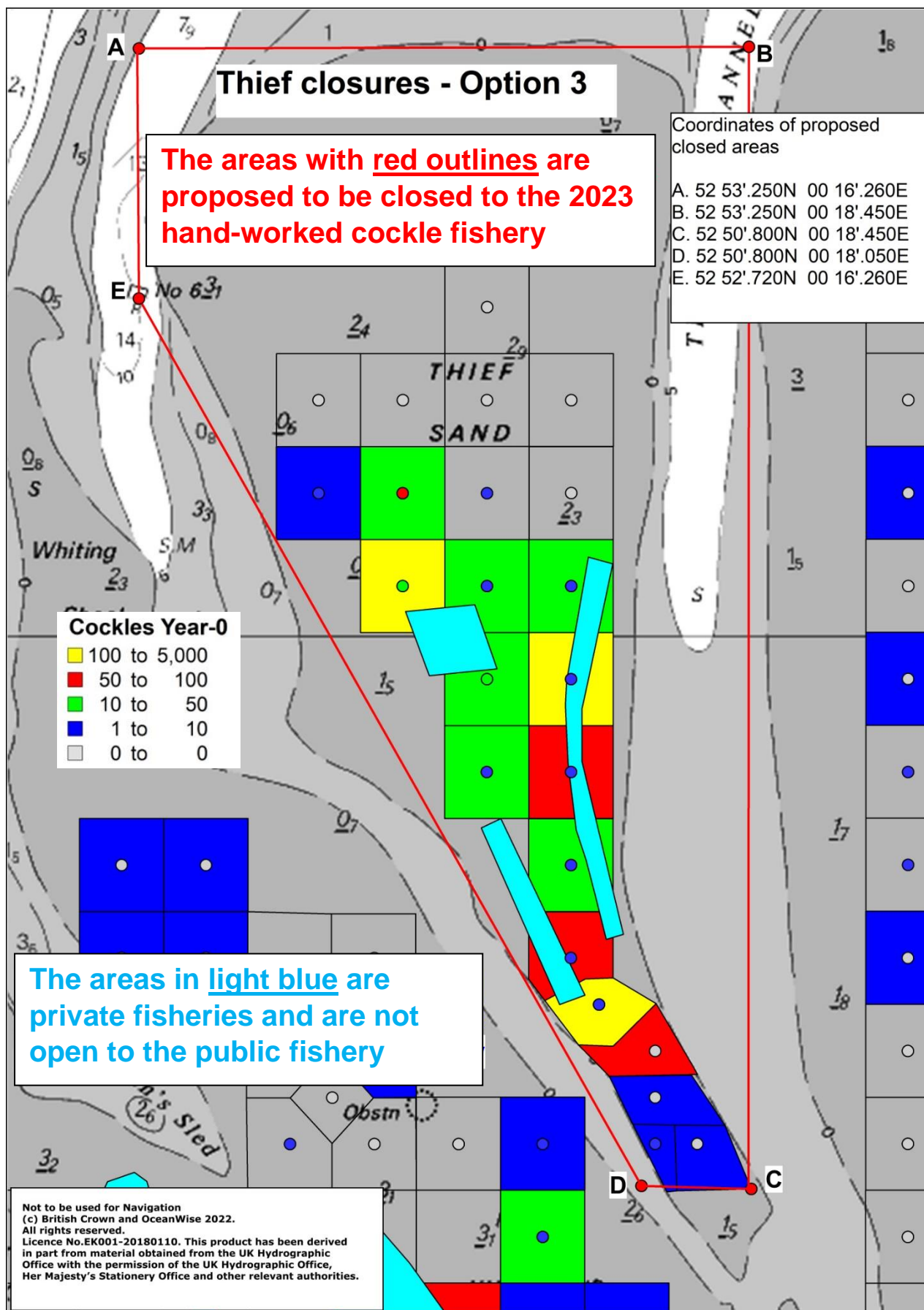


Chart 6 – Option 3 – Total closure of the Thief Sand