

Wash Interim Measures Cockle Fishery 2023 – Exemption conditions

Fishers operating under an exemption issued under Byelaw 8 are required to undertake their fishing activities in accordance with the conditions set by the Authority.

The following Exemption Conditions are applicable to fishers operating in the Wash Interim Measures Cockle Fishery 2023 from the date specified in Exemption Condition 2 (Open date of fishery).

Exemption Condition 1: Wash Fishery Order Regulations

It is prohibited to fish other than in strict accordance with the Wash Fishery Order 1992 Regulations 3 to 17 in Schedule 1 as they existed prior to expiry of the Order.

For the purpose of these conditions, the Regulations at Schedule 1 should be read as follows:

- a) Reference to ‘Regulated Fishery’ or ‘Several Fishery’ should be read as fisheries managed under the interim measures; and
- b) Reference to ‘licences’ should be read as exemptions issued by the Authority to the Temporary Closure in The Wash.
- c) “prescribed species” means any of the species specified in the Wash Fishery Order 1992 as prescribed species.
- d) “cockle” means any bivalve mollusc belonging to the genus *Cerastoderma*;
- e) “prop-washing” means the practice of turning a vessel in tight circles to aid the fishing of cockles;

Exemption Condition 2: Fishing Method

It is prohibited to fish for, take or remove from the fishery cockles using any method other than hand-working which can be augmented by prop-washing so far as it was permitted by Wash Fishery Order Regulation 17.

Exemption Condition 3: Opening / closing date

It is prohibited to fish for, take or remove from the fishery cockles prior to the open date or after the close date of the fishery.

1. The fishery will open at **xx:xx** on **xxxx** (the open date) and in accordance with the Days of Operation (Exemption Condition 6) thereafter.
2. The Authority will notify Exemption Holders, Nominated Representatives and Deputies with at least 12 hours’ notice of the closure (the close date) of the fishery as follows:
 - a. on the exhaustion of the Total Allowable Catch (**xxxx** tonnes) or to enable the start of the 2024 cockle surveys; or

Enclosure 4 – Draft Management Measures

- b. where it is judged necessary to do so to meet the conservation objectives of the marine protected areas of The Wash or for the sustainability or the viability of the fishery.

Exemption Condition 4: Closed areas

1. It is prohibited to fish for, take or remove from the fishery any cockles from areas marked as closed in the charts at Schedule 2 of these Exemption Conditions.
2. It is prohibited to fish for, take or remove from the fishery any cockles from areas in the charts at Schedule 3 (Shellfish Lays) of these Exemption Conditions.

Exemption Condition 5: Daily Catch Restriction (cockles)

The maximum weight of cockles as referred to in Wash Fishery Order Regulation 8 (Daily Catch Restrictions – Cockles) is 2000kg. For the purpose of determining the weight of catch, no allowance will be given for the weight of containers or sand or other material.

Exemption Condition 6: Days of Operation

It is prohibited to fish for, take or remove from the fishery cockles other than during publicised Days of Operation at Schedule 5.

Exemption Condition 7: Spatial Restrictions on Sunday Openings

It is prohibited to fish for, take or remove from the fishery any cockles during any Sunday opening as per the Days of Operation (Exemption condition 5) except in the area designated as 'Holbeach Range' in Schedule 6.

Exemption Condition 8: Measures for the protection of small cockles

1. It is prohibited to remove from the fishery any cockles unless such have been sorted using a hand-held net which is capable of rejecting the majority of cockles which are under 10mm (width) and / or are of the 2022-year class of cockles;
2. Shovels, spades or any other implement which are capable of moving cockles without also sorting them, must not be used prior to them being sorted for size in accordance with the above;
3. Cockles of less than 10mm should be left on the cockle beds and not landed. Where cockles of less than 10mm are landed excessively, the Authority will consider closing the fishery or parts thereof.

Failure to comply with an exemption condition is an offence under section 3(3) of the Sea Fisheries (Shellfish) Act 1967. The master, owner and charterer (if any) of a vessel used in the commission of an offence shall each be guilty of any such offence and liable to an unlimited fine on summary conviction.

Enclosure 4 – Draft Management Measures

Exemption conditions are subject to change and fishers will be notified of any amendments to the exemption conditions.

DRAFT

Enclosure 4 – Draft Management Measures
Schedule 2: Exemption Condition 4 (1) – Closed Areas

This schedule sets out the areas closed to the fishery under Exemption Condition 4 – Closed Areas.

Closed areas are defined by a boundary drawn by the series of straight lines connecting each point listed in the tables to the next point in sequence and finally returning to the first point in each table as set out in the charts for illustrative purposes.

[see enclosure 1 and 2 for proposed closed areas for the purpose of the consultation]

DRAFT

Enclosure 4 – Draft Management Measures

Schedule 3: Exemption Condition 4(2) – Shellfish Lays

This schedule sets out the areas closed to the fishery under Exemption Condition 4(2).

Closed areas are defined by a boundary drawn by the series of straight lines connecting each point listed in the tables to the next point in sequence and finally returning to the first point in each table as set out in the charts for illustrative purposes.

Positions of Lays

Tofts

Site No.	Latitude	Longitude
TO B	52° 57.600'N	0° 10.269'E
	52° 57.667'N	0° 10.386'E
	52° 57.560'N	0° 10.319'E
	52° 57.612'N	0° 10.422'E
TO A	52° 57.487'N	0° 10.412'E
	52° 57.600'N	0° 10.269'E
	52° 57.423'N	0° 10.320'E
	52° 57.566'N	0° 10.135'E
TO 1	52° 57.423'N	0° 10.320'E
	52° 57.566'N	0° 10.135'E
	52° 57.352'N	0° 10.126'E
	52° 57.518'N	0° 09.940'E
TO 2	52° 57.352'N	0° 10.126'E
	52° 57.518'N	0° 09.940'E
	52° 57.469'N	0° 09.741'E
	52° 57.282'N	0° 09.938'E
TO 3a	52° 57.324'N	0° 09.578'E
	52° 57.399'N	0° 09.808'E
	52° 57.187'N	0° 09.716'E
	52° 57.282'N	0° 09.938'E
TO 3b	52° 57.324'N	0° 09.578'E
	52° 57.409'N	0° 09.490'E
	52° 57.469'N	0° 09.741'E
	52° 57.399'N	0° 09.808'E
TO 4a	52° 57.110'N	0° 09.558'E
	52° 57.244'N	0° 09.400'E
	52° 57.324'N	0° 09.578'E
	52° 57.187'N	0° 09.716'E
TO 4b	52° 57.244'N	0° 09.400'E
	52° 57.289'N	0° 09.470'E
	52° 57.377'N	0° 09.378'E
	52° 57.349'N	0° 09.278'E
TO 4c	52° 57.324'N	0° 09.578'E
	52° 57.289'N	0° 09.470'E
	52° 57.377'N	0° 09.378'E
	52° 57.409'N	0° 09.490'E

Site No.	Latitude	Longitude
TO 5	52° 57.030'N	0° 09.372'E
	52° 57.154'N	0° 09.214'E
	52° 57.110'N	0° 09.558'E
	52° 57.244'N	0° 09.400'E
TO 6	52° 56.950'N	0° 09.221'E
	52° 57.086'N	0° 09.086'E
	52° 57.030'N	0° 09.372'E
	52° 57.154'N	0° 09.214'E
TO 7	52° 56.950'N	0° 09.221'E
	52° 57.086'N	0° 09.086'E
	52° 56.882'N	0° 09.083'E
	52° 57.021'N	0° 08.940'E
TO 8	52° 56.810'N	0° 08.951'E
	52° 56.949'N	0° 08.809'E
	52° 56.882'N	0° 09.083'E
	52° 57.021'N	0° 08.940'E
TO 9	52° 56.810'N	0° 08.951'E
	52° 56.949'N	0° 08.809'E
	52° 56.663'N	0° 08.810'E
	52° 56.757'N	0° 08.657'E
TO 10	52° 56.567'N	0° 08.529'E
	52° 56.519'N	0° 08.652'E
	52° 56.663'N	0° 08.810'E
	52° 56.757'N	0° 08.657'E
TO 11	52° 56.567'N	0° 08.529'E
	52° 56.519'N	0° 08.652'E
	52° 56.440'N	0° 08.438'E
	52° 56.415'N	0° 08.503'E

Enclosure 4 – Draft Management Measures

Clay Hole

	Latitude	Longitude
CH 1	52 56'.54 N	00 05'.98 E
	52 56'.54 N	00 06'.18 E
	52 56'.63 N	00 06'.30 E
	52 56'.64 N	00 06'.12 E
CH 1a	52 56'.630 N	00 06'.300 E
	52 56'.629 N	00 06'.383 E
	52 56'.540 N	00 06'.180 E
	52 56'.540 N	00 06'.980 E
	52 56'.463 N	00 06'.081 E
CH 2	52 56'.64 N	00 06'.12 E
	52 56'.63 N	00 06'.30 E
	52 56'.75 N	00 06'.45 E
	52 56'.54 N	00 06'.29 E
CH 2a	52 56'.629 N	00 06'.383 E
	52 56'.663 N	00 06'.439 E
	52 56'.750 N	00 06'.450 E
	52 56'.630 N	00 06'.300 E
CH 3	52 56'.75 N	00 06'.45 E
	52 56'.75 N	00 06'.20 E
	52 56'.83 N	00 06'.25 E
	52 56'.85 N	00 06'.58 E
CH 4	52 56'.85 N	00 06'.58 E
	52 56'.81 N	00 06'.35 E
	52 56'.88 N	00 06'.45 E
	52 56'.90 N	00 06'.68 E
CH 5	52 56'.88 N	00 06'.45 E
	52 56'.90 N	00 06'.68 E
	52 56'.95 N	00 06'.52 E
	52 56'.98 N	00 06'.75 E
CH 6	52 56'.155 N	00 05'.629 E
	52 56'.135 N	00 05'.461 E
	52 56'.077 N	00 05'.462 E
	52 56'.103 N	00 05'.631 E
	52 56'.165 N	00 05'.725 E
	52 56'.210 N	00 05'.724 E
CH 7	52 56'.493 N	00 05'.815 E
	52 56'.448 N	00 05'.879 E
	52 56'.454 N	00 05'.660 E
	52 56'.406 N	00 05'.700 E
CH 8	52 56'.540 N	00 05'.980 E
	52 56'.463 N	00 06'.081 E
	52 56'.493 N	00 05'.815 E
	52 56'.448N	00 05'.879 E

Roger

Site No.	Latitude	Longitude
RG 1	52 ⁰ 56'.973N	0 ⁰ 12'.732E
	52 ⁰ 57'.029N	0 ⁰ 12'.330E
	52 ⁰ 57'.414N	0 ⁰ 12'.914E
	52 ⁰ 57'.413N	0 ⁰ 12'.664E
RG 2	52 57'.960N	00 11'.213E
	52 57'.877N	00 11'.310E
	52 57'.827N	00 11'.200E
	52 57'.919N	00 11'.103E
RG 3	52 57'.884N	00 10'.873E
	52 57'.741N	00 10'.971E
	52 57'.710N	00 10'.862E
	52 57'.790N	00 10'.689E
RG 4	52 57'.827N	00 11'.200E
	52 57'.919N	00 11'.103E
	52 57'.884N	00 10'.873E
	52 57'.741N	00 10'.971E

Hook Hill/Tofts

Lay No.	Latitude	Longitude
BB 1	52 ⁰ 56.340'N	0 ⁰ 08.410'E
	52 ⁰ 56.300'N	0 ⁰ 08.440'E
	52 ⁰ 56.260'N	0 ⁰ 08.310'E
	52 ⁰ 56.210'N	0 ⁰ 08.340'E
BB 2	52 ⁰ 56.232'N	0 ⁰ 08.202'E
	52 ⁰ 56.190'N	0 ⁰ 08.310'E
	52 ⁰ 56.094'N	0 ⁰ 08.070'E
	52 ⁰ 56.046'N	0 ⁰ 08.172'E
BB 3	52 ⁰ 56.094'N	0 ⁰ 08.070'E
	52 ⁰ 56.046'N	0 ⁰ 08.172'E
	52 ⁰ 55.847'N	0 ⁰ 08.067'E
	52 ⁰ 55.886'N	0 ⁰ 07.932'E
BB 4	52 ⁰ 55.699'N	0 ⁰ 07.967'E
	52 ⁰ 55.728'N	0 ⁰ 07.841'E
	52 ⁰ 55.847'N	0 ⁰ 08.067'E
	52 ⁰ 55.886'N	0 ⁰ 07.932'E

Herring Hill

	Latitude	Longitude
HH 1	52 ⁰ 55.12'N	0 ⁰ 06.91'E
	52 ⁰ 55.03'N	0 ⁰ 06.75'E
	52 ⁰ 55.00'N	0 ⁰ 06.60'E
	52 ⁰ 55.06'N	0 ⁰ 06.70'E
	52 ⁰ 55.12'N	0 ⁰ 06.73'E

Enclosure 4 – Draft Management Measures

Thief

Site No.	Latitude	Longitude
TH2	52 51'.200 N	00 17'.760 E
	52 51'.580 N	00 17'.480 E
	52 51'.220 N	00 17'.850 E
	52 51'.600 N	00 17'.550 E
TH4	52 51'.712 N	00 17'.788 E
	52 51'.575 N	00 17'.819 E
	52 51'.511 N	00 17'.853 E
	52 51'.435 N	00 17'.886 E
	52 51'.340 N	00 17'.926 E
	52 51'.351 N	00 17'.987 E
	52 51'.717 N	00 17'.846 E
TH5	52 51'.844 N	00 17'.781 E
	52 51'.719 N	00 17'.789E
	52 51'.724 N	00 17'.838 E
	52 51'.837 N	00 17'.839 E
TH6	52 51'.922 N	00 17'.536 E
	52 52'.045 N	00 17'.208 E
	52 52'.060 N	00 17'.475 E
	52 51'.908 N	00 17'.292 E
TH7	52 51'.897 N	00 17'.784 E
	52 51'.897 N	00 17'.861 E
	52 51'.837 N	00 17'.839 E
	52 51'.845 N	00 17'.781 E
TH8	52 51'.897 N	00 17'.784 E
	52 51'.897 N	00 17'.861 E
	52 52'.162 N	00 17'.861 E
	52 52'.148 N	00 17'.948 E

Blackguard

	Latitude	Longitude
BLK2	52 52'.951 N	00 21'.774 E
	52 52'.883 N	00 21'.729 E
	52 52'.909 N	00 21'.784 E
	52 52'.922 N	00 21'.715 E
BLK3	52 52'.951 N	00 21'.774 E
	52 52'.974 N	00 21'.750 E
	52 52'.944 N	00 21'.682 E
	52 52'.922 N	00 21'.715 E

Scotsman's Sled

	Latitude	Longitude
SS1	52°50'.386N	0°17'.100E
	52°50'.240N	0°17'.298E
	52°50'.330N	0°17'.489E
	52°50'.430N	0°17'.340E
SS2	52°50'.652N	0°16'.523E
	52°50'.600N	0°16'.447E
	52°50'.686N	0°16'.296E
	52°50'.770N	0°16'.362E
SS3	52°51'.191N	0°15'.685E
	52°51'.162N	0°15'.649E
	52°51'.183N	0°15'.482E
	52°51'.213N	0°15'.507E
SS4	52°50'.819N	0°16'.150E
	52°50'.772N	0°16'.114E
	52°50'.728N	0°16'.236E
	52°50'.794N	0°16'.303E
	52°50'.839N	0°16'.246E
SS5	52°50'.658N	0°16'.527E
	52°50'.595N	0°16'.444E
	52°50'.490N	0°16'.440E
	52°50'.486N	0°16'.540E
SS6	52°51'.601N	0°15'.037E
	52°51'.611N	0°15'.136E
	52°51'.659N	0°15'.020E
	52°51'.660N	0°15'.108E
SS7	52°50'.386N	0°17'.100E
	52°50'.614N	0°17'.153E
	52°50'.518N	0°16'.988E
	52°50'.430N	0°17'.340E
SS8	52°50'.330N	0°17'.498E
	52°50'.430N	0°17'.340E
	52°50'.614N	0°17'.153E
	52°50'.518N	0°16'.988E
	52°50'.595N	0°16'.884E
	52°50'.714N	0°17'.126E
	52°50'.644N	0°17'.226E
	52°50'.364N	0°17'.558E

Enclosure 4 – Draft Management Measures

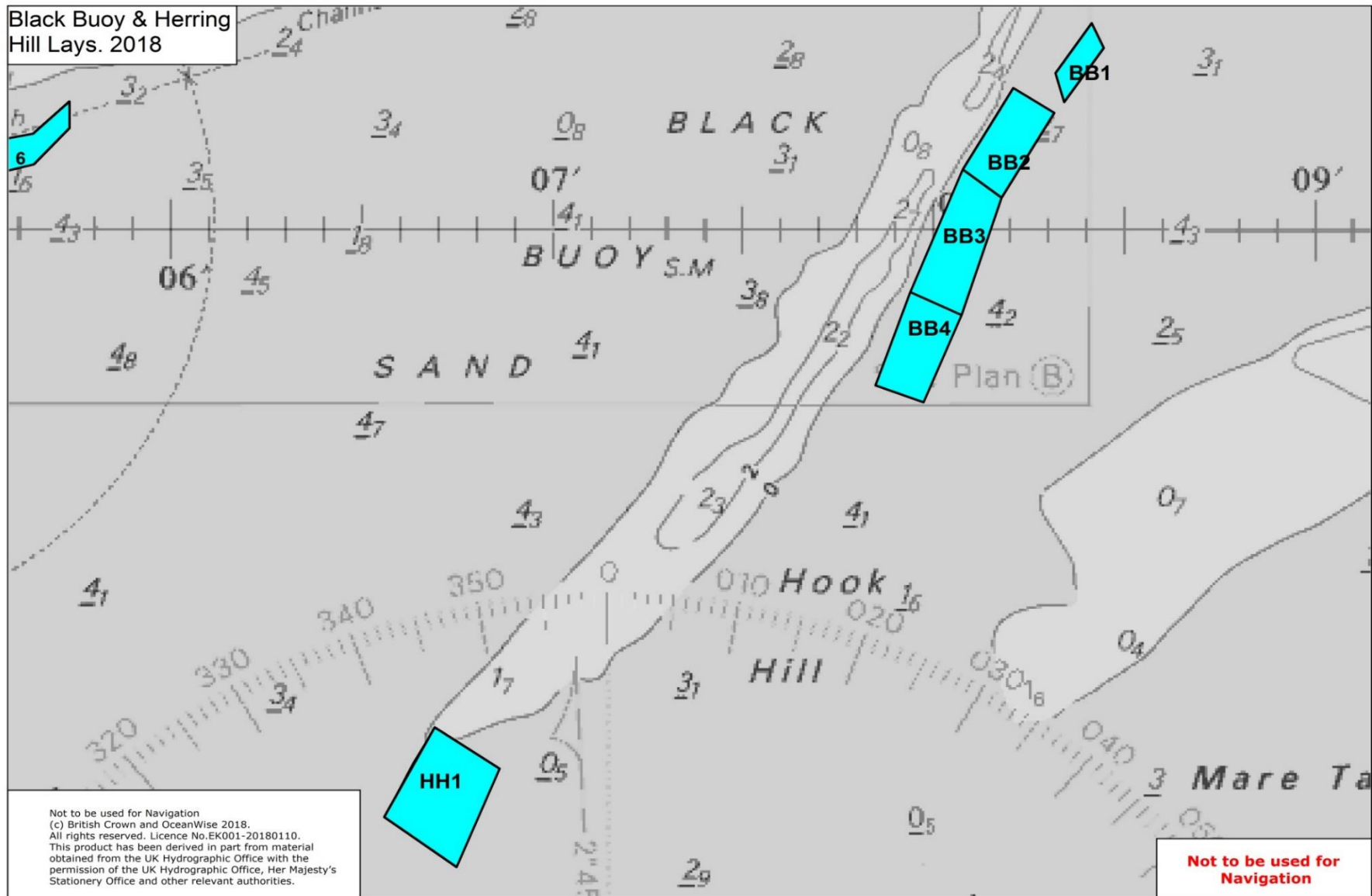
Pandora

	Latitude	Longitude
P2	52 51'.936 N	00 21'.755 E
	52 51'.924 N	00 21'.810 E
	52 51'.994 N	00 21'.839 E
	52 51'.974 N	00 21'.883 E
P6	52 51'.860 N	00 21'.573 E
	52 51'.808 N	00 21'.651 E
	52 51'.724 N	00 21'.557 E
	52 51'.576 N	00 21'.481 E
	52 51'.600 N	00 21'.385 E
	52 51'.726 N	00 21'.473 E
P7	52 51'.476 N	00 21'.377 E
	52 51'.471 N	00 21'.460 E
	52 51'.576 N	00 21'.481 E
	52 51'.600 N	00 21'.385 E

Wrangle

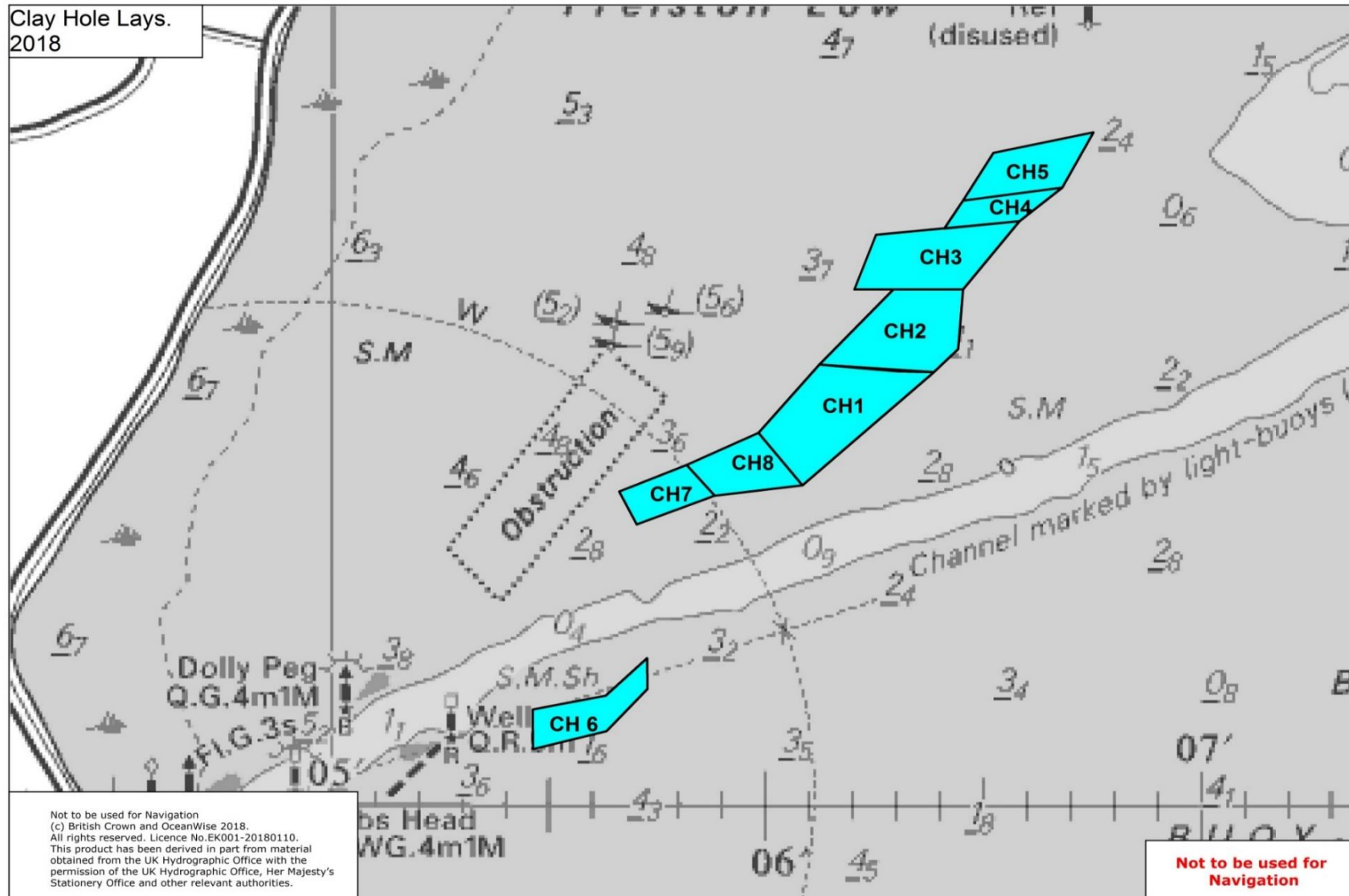
Site No.	Latitude	Longitude
W 1	53 00'.264N	00 12'.100E
	53 00'.262N	00 12'.266E
	52 00'.989N	00 12'.097E
	52 00'.979N	00 12'.194E
W 2	53 00'.262N	00 12'.266E
	53 00'.263N	00 12'.427E
	53 00'.067N	00 12'.373E
	52 59'.971N	00 12'.268E
	52 59'.979N	00 12'.194E

Enclosure 4 – Draft Management Measures



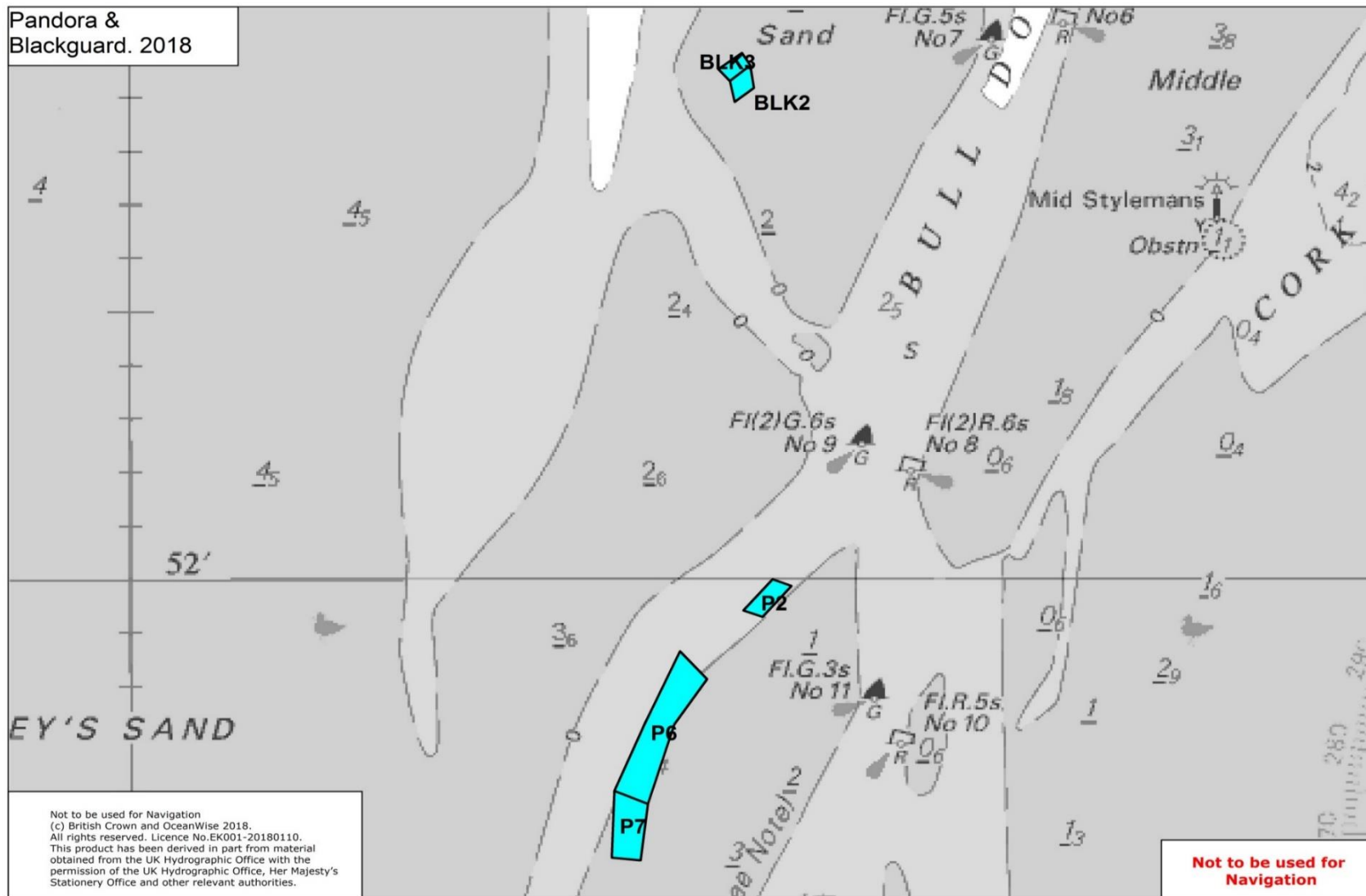
WFO Lays Chart 1 - showing the area of Black Buoy and Herring Hill sands and private lays

Enclosure 4 – Draft Management Measures



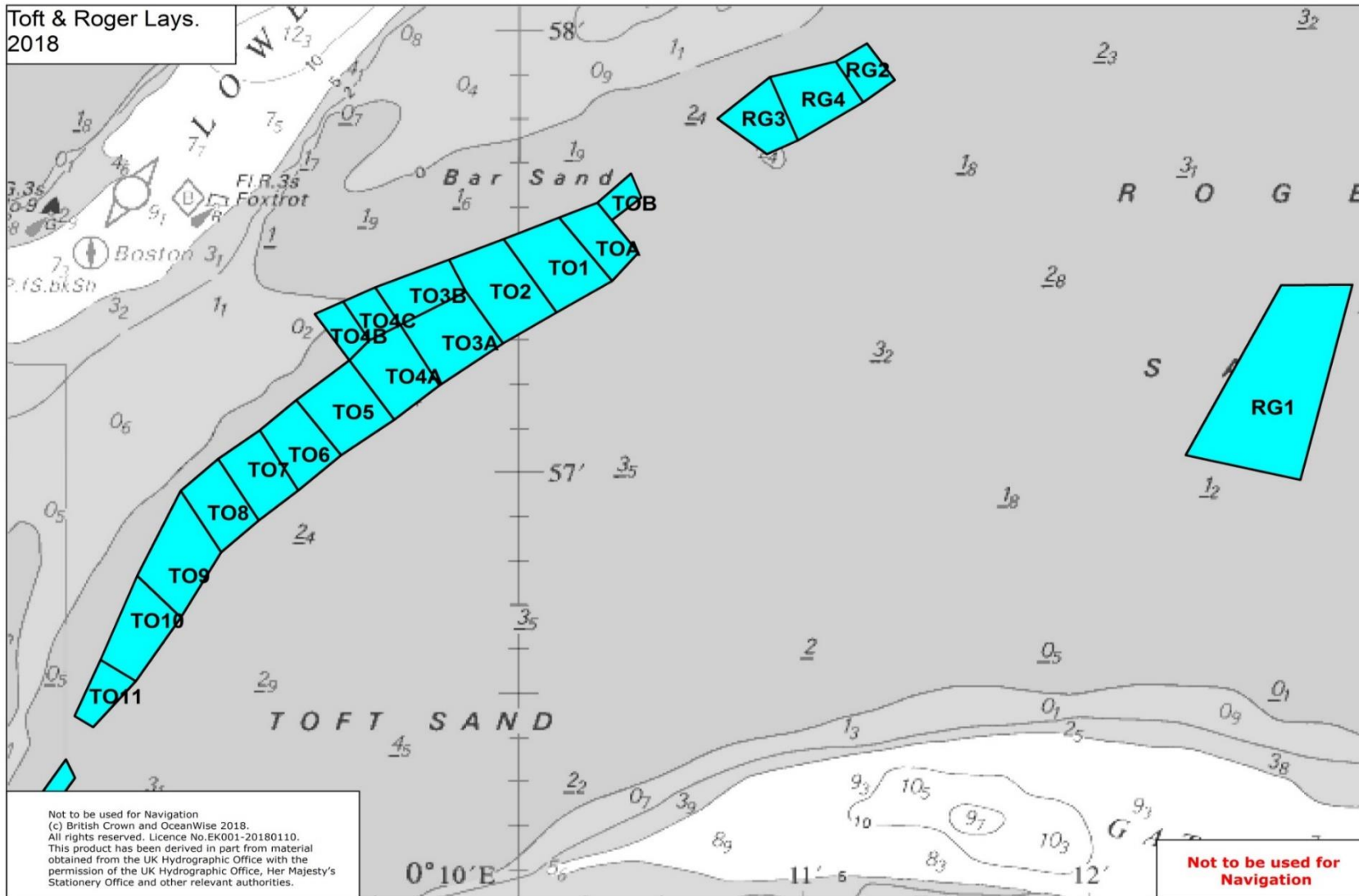
WFO Lays Chart 2 - showing the area of Clay Hole and private lays

Enclosure 4 – Draft Management Measures



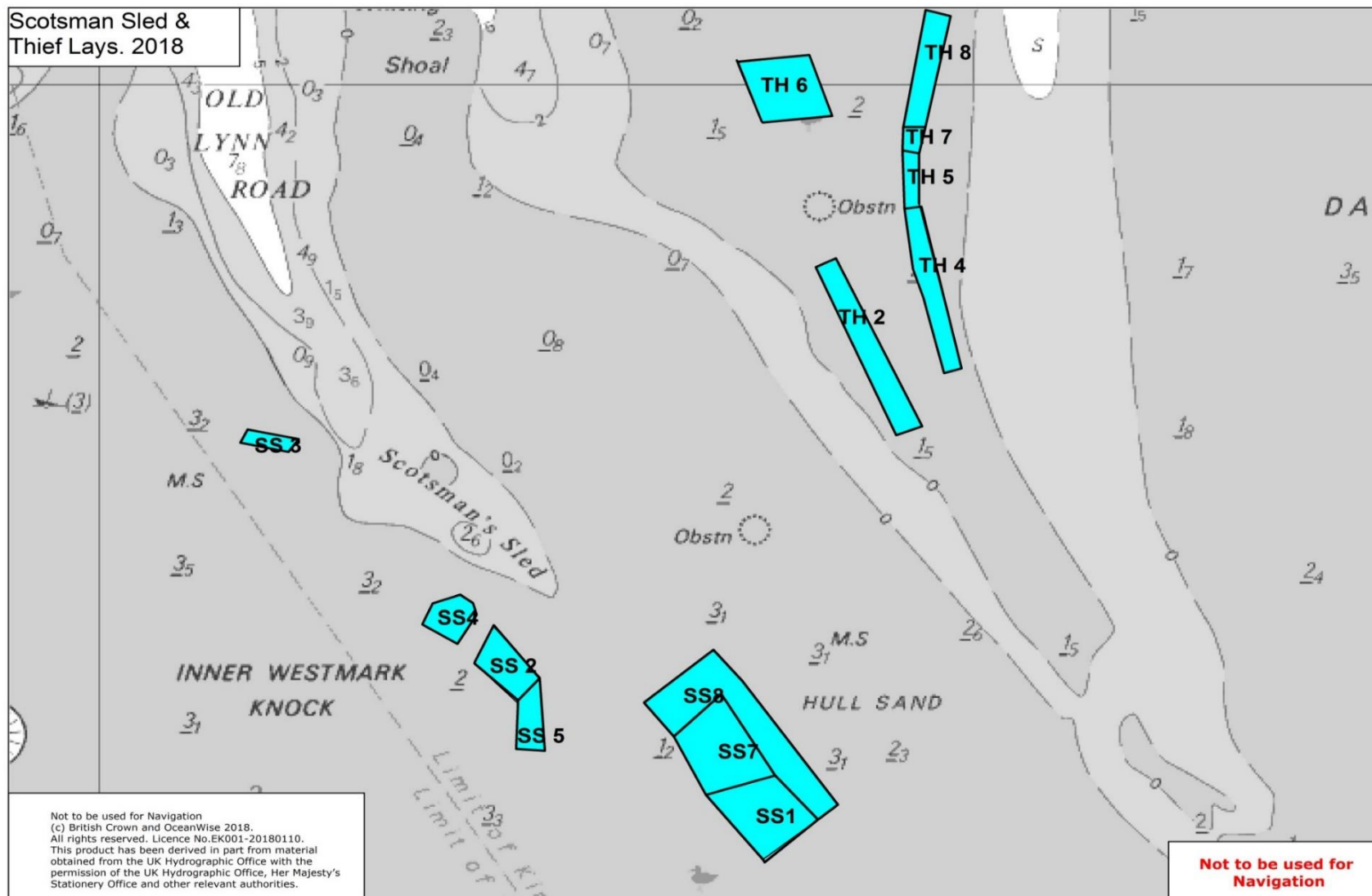
WFO Lays Chart 3 - showing the area of Pandora and Blackguard sands and private lays

Enclosure 4 – Draft Management Measures



WFO Lays Chart 4 - showing the area of Toft and Roger sands and private lays

Enclosure 4 – Draft Management Measures



WFO Lays Chart 5 - showing the area of Scotsman Sled and Thief sands and private lays

Schedule 5 – Operating times

The following tables set out the Days of Operation for the cockle fishery as referred to in Exemption Condition 6 (Days of Operation).

[see enclosure 3 for draft operating times for the purpose of the consultation]