

Wash Interim Measures Cockle Fishery 2023 – Exemption conditions

Fishers operating under an exemption issued under Byelaw 8 are required to undertake their fishing activities in accordance with the conditions set by the Authority.

The following Exemption Conditions are applicable to fishers operating in the Wash Interim Measures Cockle Fishery 2023 from the date specified in Exemption Condition 3 (Opening / closing date).

Exemption Condition 1: Wash Fishery Order Regulations

It is prohibited to fish other than in strict accordance with the Wash Fishery Order 1992 Regulations 3 to 17 in Schedule 1 as they existed prior to expiry of the Order.

For the purpose of these conditions, the Regulations at Schedule 1 should be read as follows:

- a) Reference to ‘Regulated Fishery’ or ‘Several Fishery’ should be read as fisheries managed under the interim measures; and
- b) Reference to ‘licences’ should be read as exemptions issued by the Authority to the Temporary Closure in The Wash.
- c) References to ‘licence conditions’ should be read as conditions attaching to exemptions issued by the Authority to the temporary Closure in The Wash.
- d) “prescribed species” means any of the species specified in the Wash Fishery Order 1992 as prescribed species.
- e) “cockle” means any bivalve mollusc belonging to the genus *Cerastoderma*;
- f) “prop-washing” means the practice of turning a vessel in tight circles to aid the fishing of cockles;

Exemption Condition 2: Fishing Method

It is prohibited to fish for, take or remove from the fishery cockles using any method other than hand-working which can be augmented by prop-washing so far as it is permitted by Wash Fishery Order Regulation 17.

Exemption Condition 3: Opening / closing date

It is prohibited to fish for, take or remove from the fishery cockles prior to the open date or after the close date of the fishery.

1. The fishery will open at 04:45 on 3 July 2023 (the open date) and in accordance with the Days of Operation (Exemption Condition 6) thereafter.
2. The fishery will close at 01:45 on 8 July 2023.
3. The Authority will notify Exemption Holders, Nominated Representatives and Deputies with at least 12 hours’ notice of a closure prior to the close date where

it is judged necessary to do so to meet the conservation objectives of the marine protected areas of The Wash or for the sustainability or the viability of the fishery.

Exemption Condition 4: Closed areas

1. It is prohibited to fish for, take or remove from the fishery any cockles from areas marked as closed in the charts at Schedule 2 of these Exemption Conditions.
2. It is prohibited to fish for, take or remove from the fishery any cockles from areas in the charts at Schedule 3 (Shellfish Lays) of these Exemption Conditions.

Exemption Condition 5: Daily Catch Restriction (cockles)

The maximum weight of cockles as referred to in Wash Fishery Order Regulation 8 (Daily Catch Restrictions – Cockles) is 2000kg. For the purpose of determining the weight of catch, no allowance will be given for the weight of containers or sand or other material.

Exemption Condition 6: Days of Operation

It is prohibited to fish for, take or remove from the fishery cockles other than during publicised Days of Operation at Schedule 4.

Exemption Condition 7: Spatial Restrictions on Sunday Openings

It is prohibited to fish for, take or remove from the fishery any cockles during any Sunday opening as per the Days of Operation (Exemption condition 6) except in the area designated as 'Holbeach Range' in Schedule 5.

Exemption Condition 8: Measures for the protection of small cockles

1. It is prohibited to fish for, take or remove from the fishery any cockles unless such have been sorted using an implement which is capable of rejecting the majority of cockles which are under 10mm (width) and / or are of the 2022-year class of cockles;
2. Cockles of less than 10mm should be left on the cockle beds and not landed. Where cockles of less than 10mm are landed excessively, the Authority will consider closing the fishery or parts thereof.

Failure to comply with an exemption condition is an offence under section 163(1) of the Marine and Coastal Access Act 2009. The master, owner and charterer (if any) of a vessel used in the commission of an offence shall each be guilty of any such offence and liable to an unlimited fine on summary conviction in accordance with section 163(2) and (3).

Exemption conditions are subject to change and fishers will be notified of any amendments to the exemption conditions.

Schedule 1 - Wash Fishery Order 1992 Regulations



Eastern Inshore Fisheries and Conservation Authority

Wash Fishery Order 1992

Wash Fishery Order 1992 Regulations

The Authority for the Eastern Inshore Fisheries and Conservation District in exercise of its powers under Article 7 of the Wash Fishery Order 1992 under the Sea Fisheries (Shellfish) Act 1967, as amended, has made the following regulations;

1. Interpretation

In these Regulations:

- 1) “the Order” means the Wash Fishery Order 1992 (SI 1992/3038);
- 2) “Regulated Fishery” means a fishery as described by Eastern IFCA in accordance with Article 8(5) of the Order and undertaken under the authority of a licence issued under Article 8(1) of the Order;
- 3) “Several Fishery” means fishing under the authority of a lease granted under Article 6(1) of the Order;
- 4) “prescribed species” means any of the species specified in the Wash Fishery Order 1992 as prescribed species.
- 5) “cockle” means any bivalve mollusc belonging to the genus *Cerastoderma*;
- 6) “mussel” means any of the species belonging to the genus *Mytilus*;
- 7) “harvestable mussel fishery” means a mussel fishery, the licence conditions for which, allow for mussels fished for, taken or removed from the fishery to be sold directly to a market;

8) “relaying mussel fishery” means a mussel fishery, the licence conditions for which do not allow mussels to be sold directly to market but instead, must be relayed for the purpose of aquaculture;

9) “licence” means a licence granted under Article 8(1) of Order;

10) “bottom-towed-gear” means any fishing gear designed to be towed, dragged or pushed through the water whilst in contact with the seabed;

11) “prop-washing” means the practice of turning a vessel in tight circles to aid the fishing of cockles;

2. Application

The following Regulations apply to persons fishing under the authority of a licence.

3. Bottom-towed-gear restrictions

1) A person must not fish for, take or remove from the fishery any of the prescribed species using bottom-towed-gear unless a written certificate of approval for that bottom-towed-gear has been provided by the Authority in accordance with Regulation 4.

2) A person must not fish for, take or remove from the fishery, cockles using;

- a) more than one instrument of bottom-towed-gear; or
- b) a hydraulic suction dredge with an aggregate dredge head width of more than 76cm.

3) Without written authorisation from the Authority, a person must not fish for, take or remove from the fishery, mussels using a mussel dredge with an inside opening of more than one meter in width.

4) A person must not fish for, take or remove from the fishery any of the prescribed species other than cockles using more than two instruments of bottom-towed-gear.

4. Bottom-towed-gear - Approval

1) A provisional certificate of approval may be issued which will be valid for one month.

2) A full certificate of approval may be issued, which will be valid until 31 December following the date the certification is issued, where bottom-towed-gear meets the following conditions:

- a) The bottom-towed-gear does not result in more than 10% by weight of the target species being visibly damaged;
- b) The Authority has been advised by scientists who appear to them to be suitably qualified that the bottom-towed-gear does not cause unacceptable damage to habitats or species;
- c) Bottom-towed-gear and associated catch sorting equipment is of a specification required by the Authority for reasons relating to fisheries management or are pursuant of meeting 4(2)(a) and 4(2)(b) above.

3) For the purpose of this regulation, an organism is considered visibly damaged when on examination it is seen that there are visible cracks, chips or there is other damage to the shell. The damage rate will be determined using representative samples of shellfish retained and rejected by the operation of the bottom-towed-gear.

5. Vessel restrictions

- 1) A person must not use a vessel exceeding 14 meters in overall length to fish for, take or remove from the fishery any of the prescribed species unless authorised by the Authority in accordance with sub-paragraph 2.
- 2) The Authority may exempt vessels from sub-paragraph 1 where evidence is provided that the owner or skipper of the vessel has used the vessel to fish for, take or remove from the fishery any of the prescribed species from within the Regulated Fishery prior to the date of the advertisement of the Order.
- 3) Exemption in accordance with sub-paragraph 2 shall cease if the vessel changes ownership.

6. Tenders

A vessel must not carry or tow a tender which is greater than six metres in overall length.

7. Sorting of catch

Any material rejected through the sorting of catch of any of the prescribed species must be returned immediately to the sea or seabed, as nearly as possible to the place from which it was taken and spread thinly and evenly over that area.

8. Daily catch restrictions (cockles)

- 1) A person must not, in any one calendar day, fish for, take (save for doing so with the intention of riddling or otherwise sorting catch in

accordance with regulation 7) or remove from the fishery more than the maximum weight of cockles specified in the licence conditions by hand.

2) A person must not, in any one calendar day, fish for or take (save for doing so with the intention of riddling or otherwise sorting catch in accordance with regulation 7) or remove from the fishery more than 4000 kilograms of cockles by dredge.

3) For the purpose of determining the weight of catch no allowance will be given for the weight of any containers or sand or other material.

4) A person must not fish for, take or remove from the fishery any cockles by hand if, during the same calendar day, that person has fished for, taken or removed any cockles by dredge.

5) A person must not fish for, take or remove from the fishery any cockles by dredge if, during the same calendar day, that person has fished for, taken or removed any cockles by hand.

9. Daily catch restrictions (mussels)

1) A person must not, in any one calendar day, fish for or take (save for doing so with the intention of riddling or otherwise sorting catch in accordance with regulation 7) or remove from the fishery:

a) More than 4000 kilograms of mussels during a harvestable mussel fishery; or

b) More than 8000 kilograms of mussels during a relaying mussel fishery.

2) For the purpose of determining the weight of catch no allowance will be given for the weight of any containers or sand or other material.

3) A person must not fish for, take or remove from the fishery any mussels from a harvestable mussel fishery if, during the same calendar day, that person has fished for, taken or removed from the fishery mussels from a relaying mussel fishery.

4) A person must not fish for, take or remove from the fishery any mussels from a relaying mussel fishery if, during the same calendar day, that person has fished for, taken or removed from the fishery mussels from a harvestable mussel fishery.

10. Mussels (*Mytilus edulis*) minimum size

1) A person must not remove from the boundary of the Wash Fishery Order 1992 any mussels (*Mytilus edulis*) from within the Regulated Fishery which are less than 45mm in length but must return such immediately to the sea in accordance with sub-paragraph 2 (below)

unless they are being fished for, taken or removed as part of a relaying mussel fishery.

2) Mussels and any material arising from the sorting of mussels must be returned immediately to the sea or seabed, as nearly as possible to the place from which it was taken and spread thinly and evenly over that area.

11. Seed movement

Without prejudice to the Article 12 of the Wash Fishery Order 1992, a person must not transport any shellfish under an authorisation granted by said article by road unless an application for such is completed which will require the following information:

- a) Destination of the shellfish; and
- b) The date of the proposed transport.

12. Weekly catch returns

An accurately completed weekly catch return form, supplied by Eastern IFCA, must be returned for each week of fishing, to Eastern IFCA offices by no later than Friday of the calendar week following any fishing activity.

13. Transshipping prohibition

A person must not tranship or otherwise relocate any of the prescribed species, or containers of any description containing any of the prescribed species, fished from the Regulated Fishery from one vessel to another.

14. Requirement to land (cockles)

- 1) A person fishing for cockles must:
 - a) take any cockles fished for from the Regulated fishery straight to port;
 - b) land such cockles immediately; and
 - c) not leave cockles on the sand or deposited in the water in bags or any other container for later collection.
- 2) A person must not land cockles fished for from the Regulated fishery on more than one occasion during one calendar day.

15. Dual fishing prohibition

- 1) A person must not fish for, take or remove from the fishery any of the prescribed species from the Regulated Fishery on the same

calendar day as fishing for, taking or removing from the fishery the same prescribed species from outside of the Regulated Fishery or from a Several Fishery.

2) A person must not have on board any bottom-towed-gear which could be used to fish for, take or remove from the fishery any of the prescribed species when fishing for, taking or removing from the fishery any of the prescribed species from a hand-work fishery.

16. Standard bags

A person must not land mussels or cockles fished from the Regulated Fishery unless such are contained in a bag which must:

1) be of the following dimensions:

- a) 120 centimetres or 60 centimetres in height;
- b) 97 centimetres in depth;
- c) 97 centimetres in width: and

2) have the words 'Wash Fishery Order' written on at least two sides with lettering which is at least 10 centimetres tall.

17. Prop-washing

1) A person fishing for cockles must not:

- a) use an anchor which affixes the vessel to the bottom of the seabed during the practice of prop-washing;
- b) conduct prop-washing in such a manner as to cause more than one ring to be formed in the seabed;

2) A person must spread any cockles dislodged from prop-washing thinly and evenly over the ground, as nearly as possible to the area from which they were dislodged before leaving the bed.

18. Revocations

The Wash Fishery Order 1992 Regulations in force immediately before the date on which these Regulations come into force, are hereby revoked.

Schedule 2: Exemption Condition 4 (1) – Closed Areas

This schedule sets out the areas closed to the fishery under Exemption Condition 4 – Closed Areas.

Closed areas are defined by a boundary drawn by the series of straight lines connecting each point listed in the tables to the next point in sequence and finally returning to the first point in each table as set out in the charts for illustrative purposes.

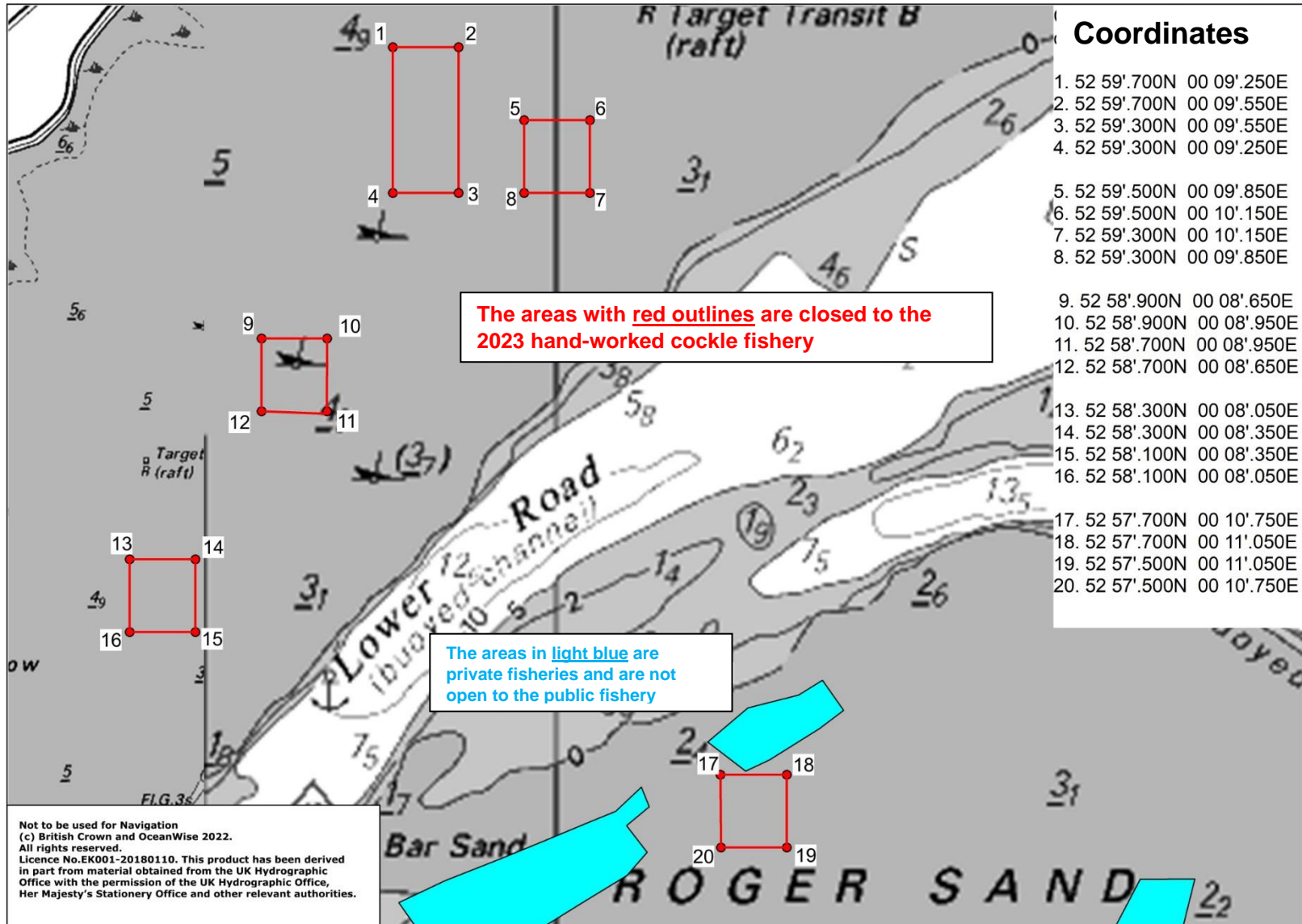


Chart 1 – Positions of closures on Butterwick and Roger sands to protect Year-0 juvenile cockles

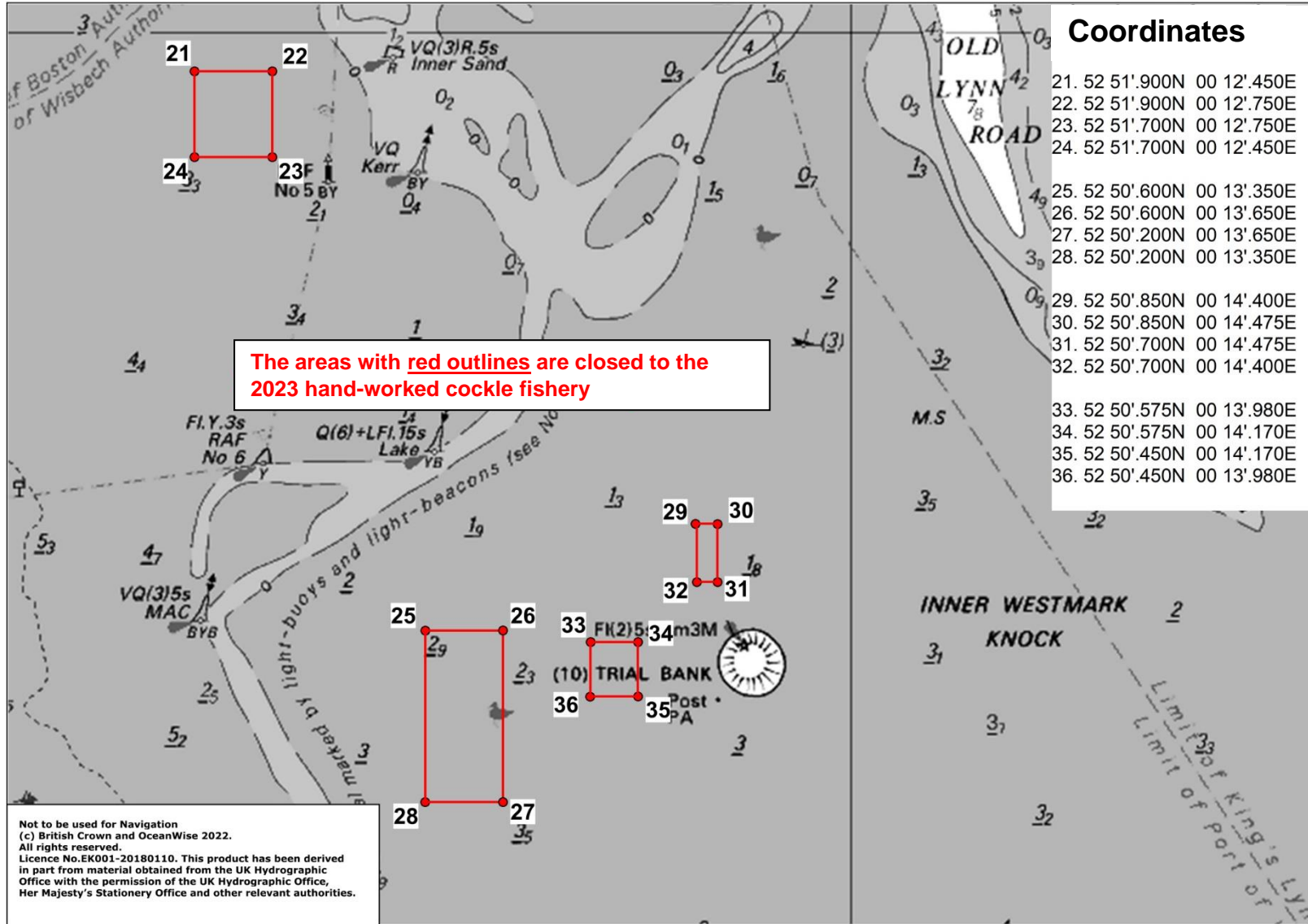


Chart 2 – Positions of closures on Holbeach and IWMK sands to protect Year-0 juvenile cockles

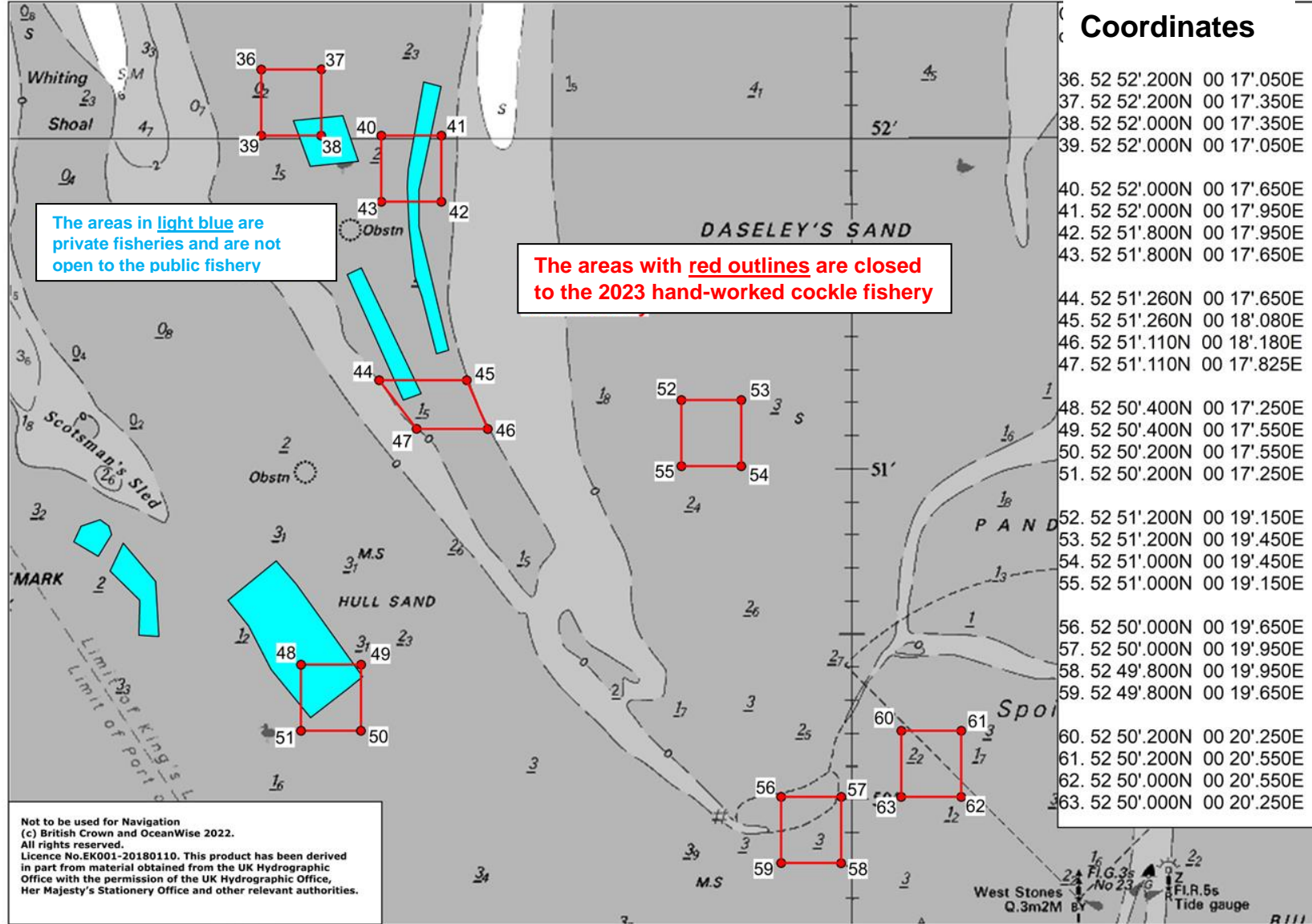


Chart 3 – Positions of closures on Breast, Thief and Daseley’s sands to protect Year-0 juvenile cockles

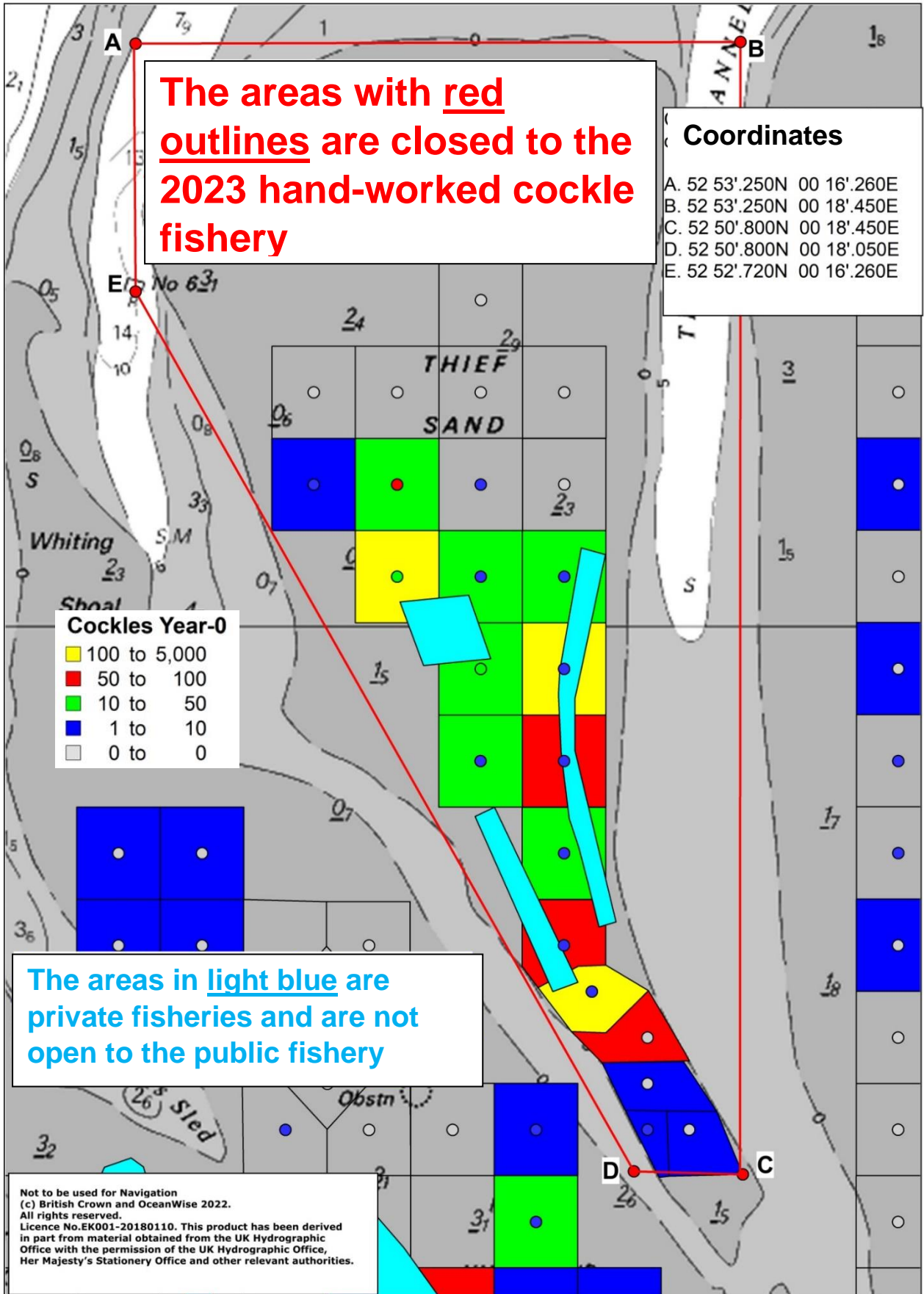
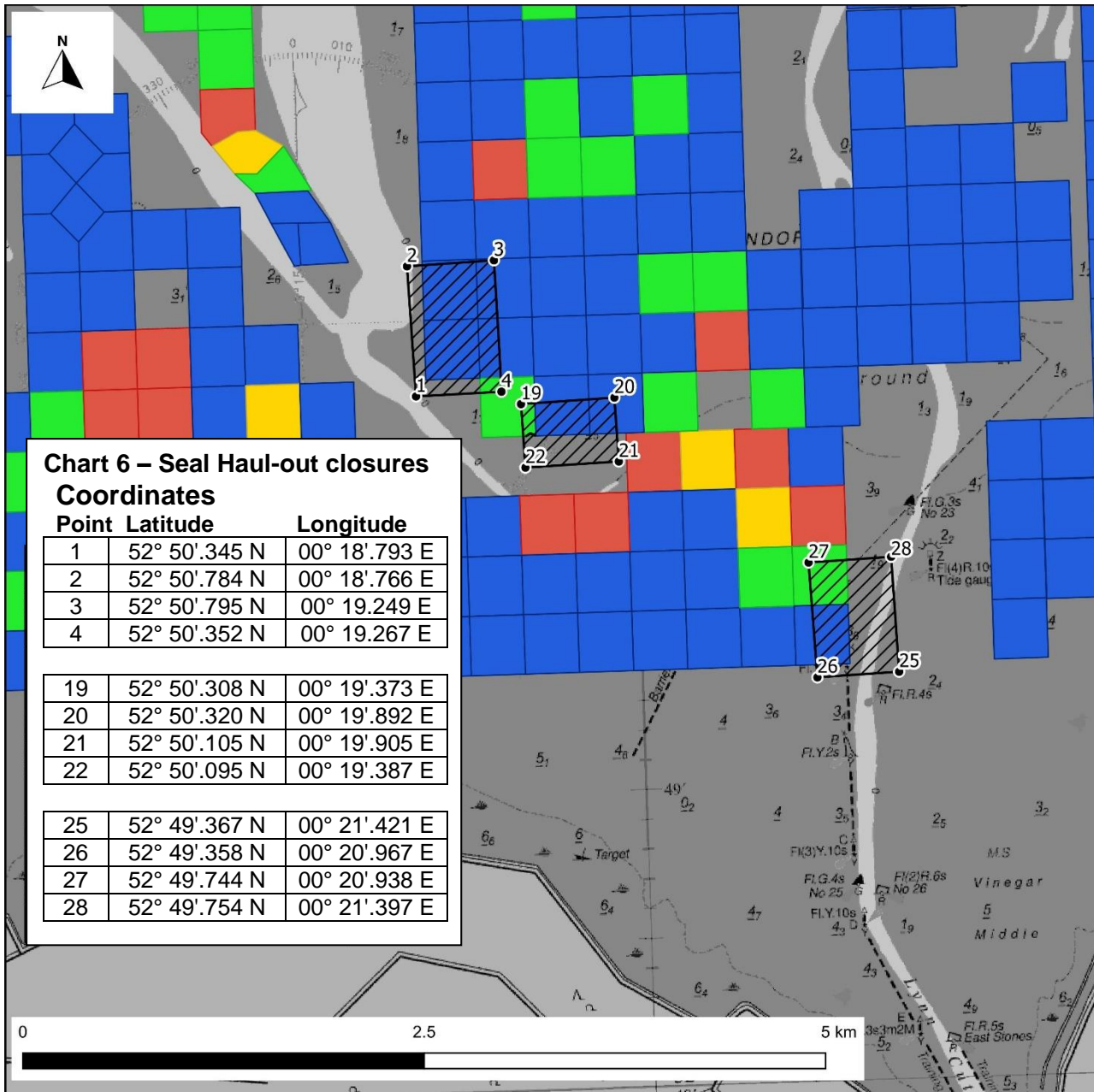


Chart 4 - closure of the Thief Sand



Wash cockle fishery 2023 – Seal haulout closures

Closed Areas (1st June - 31st August)

Total Cockle Weight (g/0.01m2)

- 0 - 23
- 23 - 70
- 70 - 164
- 164 - 500

Created by: ZP
 Checked by: EJ
 Date: June 2023



Chart 6 – Seal Haul-out closures

Coordinates

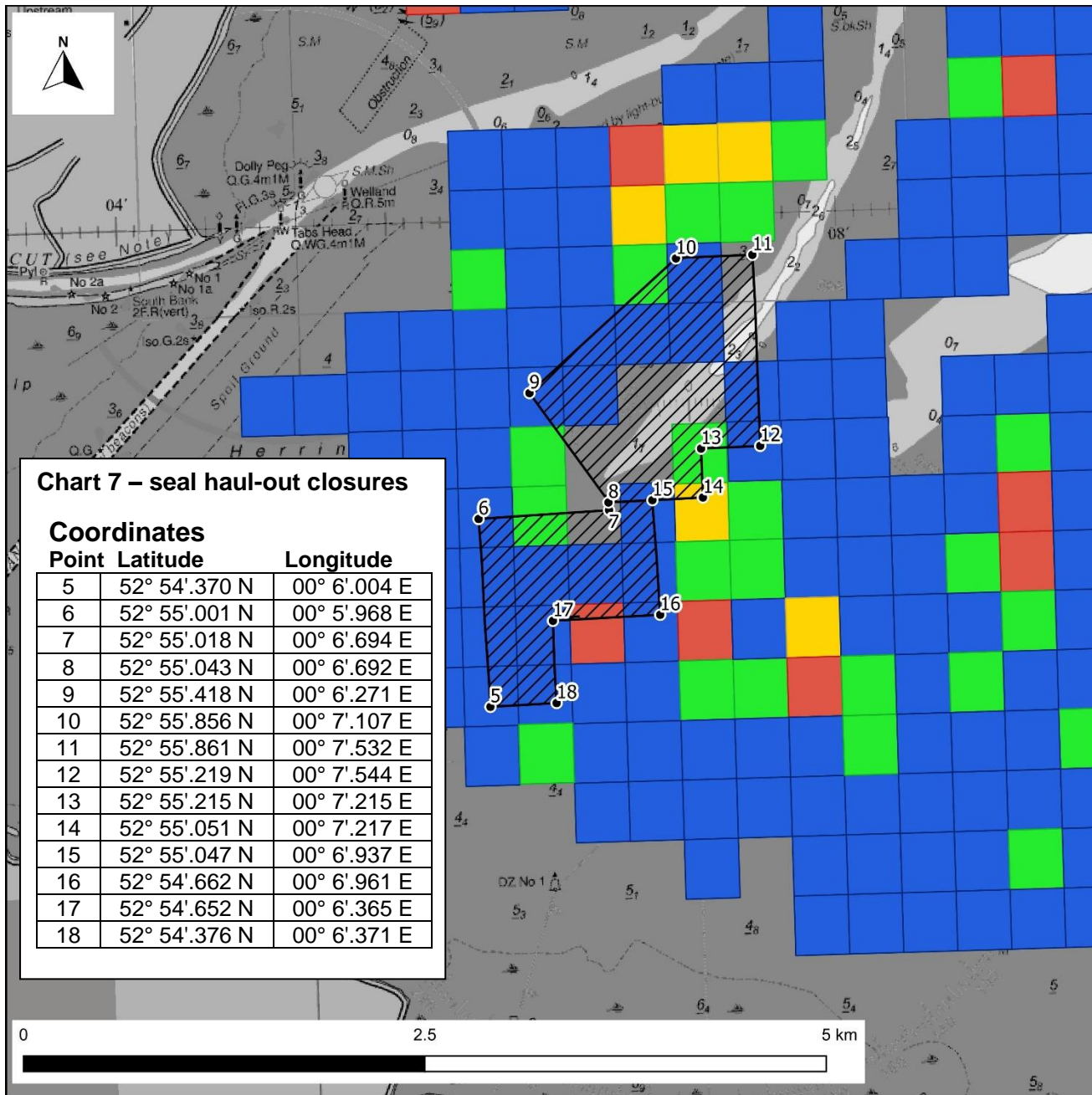
Point	Latitude	Longitude
1	52° 50'.345 N	00° 18'.793 E
2	52° 50'.784 N	00° 18'.766 E
3	52° 50'.795 N	00° 19'.249 E
4	52° 50'.352 N	00° 19'.267 E
19	52° 50'.308 N	00° 19'.373 E
20	52° 50'.320 N	00° 19'.892 E
21	52° 50'.105 N	00° 19'.905 E
22	52° 50'.095 N	00° 19'.387 E
25	52° 49'.367 N	00° 21'.421 E
26	52° 49'.358 N	00° 20'.967 E
27	52° 49'.744 N	00° 20'.938 E
28	52° 49'.754 N	00° 21'.397 E

Not to be used for navigation

(c) British Crown and OceanWise 2023. All rights reserved.

Licence No.EK001-20180110.
 This product has been derived in part from material obtained from the UK Hydrographic Office with the permission of the UK Hydrographic Office, His Majesty's Stationery Office and other relevant authorities.





Wash cockle fishery 2023 – Seal haulout closures

Closed Areas (1st June - 31st August)

Total Cockle Weight (g/0.01m²)

- 0 - 23
- 23 - 70
- 70 - 164
- 164 - 500

Created by: ZP
 Checked by: EJ
 Date: June 2023



Not to be used for navigation

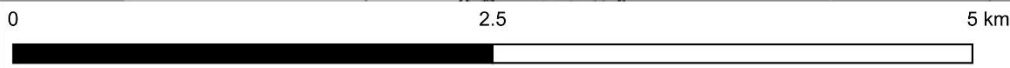
(c) British Crown and OceanWise 2023. All rights reserved.
 Licence No.EK001-20180110.
 This product has been derived in part from material obtained from the UK Hydrographic Office with the permission of the UK Hydrographic Office, His Majesty's Stationery Office and other relevant authorities.



Chart 7 – seal haul-out closures

Coordinates

Point	Latitude	Longitude
5	52° 54'.370 N	00° 6'.004 E
6	52° 55'.001 N	00° 5'.968 E
7	52° 55'.018 N	00° 6'.694 E
8	52° 55'.043 N	00° 6'.692 E
9	52° 55'.418 N	00° 6'.271 E
10	52° 55'.856 N	00° 7'.107 E
11	52° 55'.861 N	00° 7'.532 E
12	52° 55'.219 N	00° 7'.544 E
13	52° 55'.215 N	00° 7'.215 E
14	52° 55'.051 N	00° 7'.217 E
15	52° 55'.047 N	00° 6'.937 E
16	52° 54'.662 N	00° 6'.961 E
17	52° 54'.652 N	00° 6'.365 E
18	52° 54'.376 N	00° 6'.371 E



Schedule 3: Exemption Condition 4(2) – Shellfish Lays

This schedule sets out the areas closed to the fishery under Exemption Condition 4(2).

Closed areas are defined by a boundary drawn by the series of straight lines connecting each point listed in the tables to the next point in sequence and finally returning to the first point in each table as set out in the charts for illustrative purposes.

Positions of Lays

Tofts

Site No.	Latitude	Longitude
TO B	52 ⁰ 57.600'N	0 ⁰ 10.269'E
	52 ⁰ 57.667'N	0 ⁰ 10.386'E
	52 ⁰ 57.560'N	0 ⁰ 10.319'E
	52 ⁰ 57.612'N	0 ⁰ 10.422'E
TO A	52 ⁰ 57.487'N	0 ⁰ 10.412'E
	52 ⁰ 57.600'N	0 ⁰ 10.269'E
	52 ⁰ 57.423'N	0 ⁰ 10.320'E
	52 ⁰ 57.566'N	0 ⁰ 10.135'E
TO 1	52 ⁰ 57.423'N	0 ⁰ 10.320'E
	52 ⁰ 57.566'N	0 ⁰ 10.135'E
	52 ⁰ 57.352'N	0 ⁰ 10.126'E
	52 ⁰ 57.518'N	0 ⁰ 09.940'E
TO 2	52 ⁰ 57.352'N	0 ⁰ 10.126'E
	52 ⁰ 57.518'N	0 ⁰ 09.940'E
	52 ⁰ 57.469'N	0 ⁰ 09.741'E
	52 ⁰ 57.282'N	0 ⁰ 09.938'E
TO 3a	52 ⁰ 57.324'N	0 ⁰ 09.578'E
	52 ⁰ 57.399'N	0 ⁰ 09.808'E
	52 ⁰ 57.187'N	0 ⁰ 09.716'E
	52 ⁰ 57.282'N	0 ⁰ 09.938'E
TO 3b	52 ⁰ 57.324'N	0 ⁰ 09.578'E
	52 ⁰ 57.409'N	0 ⁰ 09.490'E
	52 ⁰ 57.469'N	0 ⁰ 09.741'E
	52 ⁰ 57.399'N	0 ⁰ 09.808'E
TO 4a	52 ⁰ 57.110'N	0 ⁰ 09.558'E
	52 ⁰ 57.244'N	0 ⁰ 09.400'E
	52 ⁰ 57.324'N	0 ⁰ 09.578'E
	52 ⁰ 57.187'N	0 ⁰ 09.716'E
TO 4b	52 ⁰ 57.244'N	0 ⁰ 09.400'E
	52 ⁰ 57.289'N	0 ⁰ 09.470'E
	52 ⁰ 57.377'N	0 ⁰ 09.378'E
	52 ⁰ 57.349'N	0 ⁰ 09.278'E
TO 4c	52 ⁰ 57.324'N	0 ⁰ 09.578'E
	52 ⁰ 57.289'N	0 ⁰ 09.470'E
	52 ⁰ 57.377'N	0 ⁰ 09.378'E
	52 ⁰ 57.409'N	0 ⁰ 09.490'E

Site No.	Latitude	Longitude
TO 5	52 ⁰ 57.030'N	0 ⁰ 09.372'E
	52 ⁰ 57.154'N	0 ⁰ 09.214'E
	52 ⁰ 57.110'N	0 ⁰ 09.558'E
	52 ⁰ 57.244'N	0 ⁰ 09.400'E
TO 6	52 ⁰ 56.950'N	0 ⁰ 09.221'E
	52 ⁰ 57.086'N	0 ⁰ 09.086'E
	52 ⁰ 57.030'N	0 ⁰ 09.372'E
	52 ⁰ 57.154'N	0 ⁰ 09.214'E
TO 7	52 ⁰ 56.950'N	0 ⁰ 09.221'E
	52 ⁰ 57.086'N	0 ⁰ 09.086'E
	52 ⁰ 56.882'N	0 ⁰ 09.083'E
	52 ⁰ 57.021'N	0 ⁰ 08.940'E
TO 8	52 ⁰ 56.810'N	0 ⁰ 08.951'E
	52 ⁰ 56.949'N	0 ⁰ 08.809'E
	52 ⁰ 56.882'N	0 ⁰ 09.083'E
	52 ⁰ 57.021'N	0 ⁰ 08.940'E
TO 9	52 ⁰ 56.810'N	0 ⁰ 08.951'E
	52 ⁰ 56.949'N	0 ⁰ 08.809'E
	52 ⁰ 56.663'N	0 ⁰ 08.810'E
	52 ⁰ 56.757'N	0 ⁰ 08.657'E
TO 10	52 ⁰ 56.567'N	0 ⁰ 08.529'E
	52 ⁰ 56.519'N	0 ⁰ 08.652'E
	52 ⁰ 56.663'N	0 ⁰ 08.810'E
	52 ⁰ 56.757'N	0 ⁰ 08.657'E
TO 11	52 ⁰ 56.567'N	0 ⁰ 08.529'E
	52 ⁰ 56.519'N	0 ⁰ 08.652'E
	52 ⁰ 56.440'N	0 ⁰ 08.438'E
	52 ⁰ 56.415'N	0 ⁰ 08.503'E

Clay Hole

	Latitude	Longitude
CH 1	52 56'.54 N	00 05'.98 E
	52 56'.54 N	00 06'.18 E
	52 56'.63 N	00 06'.30 E
	52 56'.64 N	00 06'.12 E
CH 1a	52 56'.630 N	00 06'.300 E
	52 56'.629 N	00 06'.383 E
	52 56'.540 N	00 06'.180 E
	52 56'.540 N	00 06'.980 E
	52 56'.463 N	00 06'.081 E
CH 2	52 56'.64 N	00 06'.12 E
	52 56'.63 N	00 06'.30 E
	52 56'.75 N	00 06'.45 E
	52 56'.54 N	00 06'.29 E
CH 2a	52 56'.629 N	00 06'.383 E
	52 56'.663 N	00 06'.439 E
	52 56'.750 N	00 06'.450 E
	52 56'.630 N	00 06'.300 E
CH 3	52 56'.75 N	00 06'.45 E
	52 56'.75 N	00 06'.20 E
	52 56'.83 N	00 06'.25 E
	52 56'.85 N	00 06'.58 E
CH 4	52 56'.85 N	00 06'.58 E
	52 56'.81 N	00 06'.35 E
	52 56'.88 N	00 06'.45 E
	52 56'.90 N	00 06'.68 E
CH 5	52 56'.88 N	00 06'.45 E
	52 56'.90 N	00 06'.68 E
	52 56'.95 N	00 06'.52 E
	52 56'.98 N	00 06'.75 E
CH 6	52 56'.155 N	00 05'.629 E
	52 56'.135 N	00 05'.461 E
	52 56'.077 N	00 05'.462 E
	52 56'.103 N	00 05'.631 E
	52 56'.165 N	00 05'.725 E
	52 56'.210 N	00 05'.724 E
CH 7	52 56'.493 N	00 05'.815 E
	52 56'.448 N	00 05'.879 E
	52 56'.454 N	00 05'.660 E
	52 56'.406 N	00 05'.700 E
CH 8	52 56'.540 N	00 05'.980 E
	52 56'.463 N	00 06'.081 E
	52 56'.493 N	00 05'.815 E
	52 56'.448N	00 05'.879 E

Roger

Site No.	Latitude	Longitude
RG 1	52 ⁰ 56'.973N	0 ⁰ 12'.732E
	52 ⁰ 57'.029N	0 ⁰ 12'.330E
	52 ⁰ 57'.414N	0 ⁰ 12'.914E
	52 ⁰ 57'.413N	0 ⁰ 12'.664E
RG 2	52 57'.960N	00 11'.213E
	52 57'.877N	00 11'.310E
	52 57'.827N	00 11'.200E
	52 57'.919N	00 11'.103E
RG 3	52 57'.884N	00 10'.873E
	52 57'.741N	00 10'.971E
	52 57'.710N	00 10'.862E
	52 57'.790N	00 10'.689E
RG 4	52 57'.827N	00 11'.200E
	52 57'.919N	00 11'.103E
	52 57'.884N	00 10'.873E
	52 57'.741N	00 10'.971E

Hook Hill/Tofts

Lay No.	Latitude	Longitude
BB 1	52 ⁰ 56.340'N	0 ⁰ 08.410'E
	52 ⁰ 56.300'N	0 ⁰ 08.440'E
	52 ⁰ 56.260'N	0 ⁰ 08.310'E
	52 ⁰ 56.210'N	0 ⁰ 08.340'E
BB 2	52 ⁰ 56.232'N	0 ⁰ 08.202'E
	52 ⁰ 56.190'N	0 ⁰ 08.310'E
	52 ⁰ 56.094'N	0 ⁰ 08.070'E
	52 ⁰ 56.046'N	0 ⁰ 08.172'E
BB 3	52 ⁰ 56.094'N	0 ⁰ 08.070'E
	52 ⁰ 56.046'N	0 ⁰ 08.172'E
	52 ⁰ 55.847'N	0 ⁰ 08.067'E
	52 ⁰ 55.886'N	0 ⁰ 07.932'E
BB 4	52 ⁰ 55.699'N	0 ⁰ 07.967'E
	52 ⁰ 55.728'N	0 ⁰ 07.841'E
	52 ⁰ 55.847'N	0 ⁰ 08.067'E
	52 ⁰ 55.886'N	0 ⁰ 07.932'E

Herring Hill

	Latitude	Longitude
HH 1	52 ⁰ 55.12'N	0 ⁰ 06.91'E
	52 ⁰ 55.03'N	0 ⁰ 06.75'E
	52 ⁰ 55.00'N	0 ⁰ 06.60'E
	52 ⁰ 55.06'N	0 ⁰ 06.70'E
	52 ⁰ 55.12'N	0 ⁰ 06.73'E

Thief

Site No.	Latitude	Longitude
TH2	52 51'.200 N	00 17'.760 E
	52 51'.580 N	00 17'.480 E
	52 51'.220 N	00 17'.850 E
	52 51'.600 N	00 17'.550 E
TH4	52 51'.712 N	00 17'.788 E
	52 51'.575 N	00 17'.819 E
	52 51'.511 N	00 17'.853 E
	52 51'.435 N	00 17'.886 E
	52 51'.340 N	00 17'.926 E
	52 51'.351 N	00 17'.987 E
	52 51'.717 N	00 17'.846 E
TH5	52 51'.844 N	00 17'.781 E
	52 51'.719 N	00 17'.789E
	52 51'.724 N	00 17'.838 E
	52 51'.837 N	00 17'.839 E
TH6	52 51'.922 N	00 17'.536 E
	52 52'.045 N	00 17'.208 E
	52 52'.060 N	00 17'.475 E
	52 51'.908 N	00 17'.292 E
TH7	52 51'.897 N	00 17'.784 E
	52 51'.897 N	00 17'.861 E
	52 51'.837 N	00 17'.839 E
	52 51'.845 N	00 17'.781 E
TH8	52 51'.897 N	00 17'.784 E
	52 51'.897 N	00 17'.861 E
	52 52'.162 N	00 17'.861 E
	52 52'.148 N	00 17'.948 E

Blackguard

	Latitude	Longitude
BLK2	52 52'.951 N	00 21'.774 E
	52 52'.883 N	00 21'.729 E
	52 52'.909 N	00 21'.784 E
	52 52'.922 N	00 21'.715 E
BLK3	52 52'.951 N	00 21'.774 E
	52 52'.974 N	00 21'.750 E
	52 52'.944 N	00 21'.682 E
	52 52'.922 N	00 21'.715 E

Scotsman's Sled

	Latitude	Longitude
SS1	52°50'.386N	0°17'.100E
	52°50'.240N	0°17'.298E
	52°50'.330N	0°17'.489E
	52°50'.430N	0°17'.340E
SS2	52°50'.652N	0°16'.523E
	52°50'.600N	0°16'.447E
	52°50'.686N	0°16'.296E
	52°50'.770N	0°16'.362E
SS3	52°51'.191N	0°15'.685E
	52°51'.162N	0°15'.649E
	52°51'.183N	0°15'.482E
	52°51'.213N	0°15'.507E
SS4	52°50'.819N	0°16'.150E
	52°50'.772N	0°16'.114E
	52°50'.728N	0°16'.236E
	52°50'.794N	0°16'.303E
	52°50'.839N	0°16'.246E
SS5	52°50'.658N	0°16'.527E
	52°50'.595N	0°16'.444E
	52°50'.490N	0°16'.440E
	52°50'.486N	0°16'.540E
SS6	52°51'.601N	0°15'.037E
	52°51'.611N	0°15'.136E
	52°51'.659N	0°15'.020E
	52°51'.660N	0°15'.108E
SS7	52°50'.386N	0°17'.100E
	52°50'.614N	0°17'.153E
	52°50'.518N	0°16'.988E
	52°50'.430N	0°17'.340E
SS8	52°50'.330N	0°17'.498E
	52°50'.430N	0°17'.340E
	52°50'.614N	0°17'.153E
	52°50'.518N	0°16'.988E
	52°50'.595N	0°16'.884E
	52°50'.714N	0°17'.126E
	52°50'.644N	0°17'.226E
	52°50'.364N	0°17'.558E

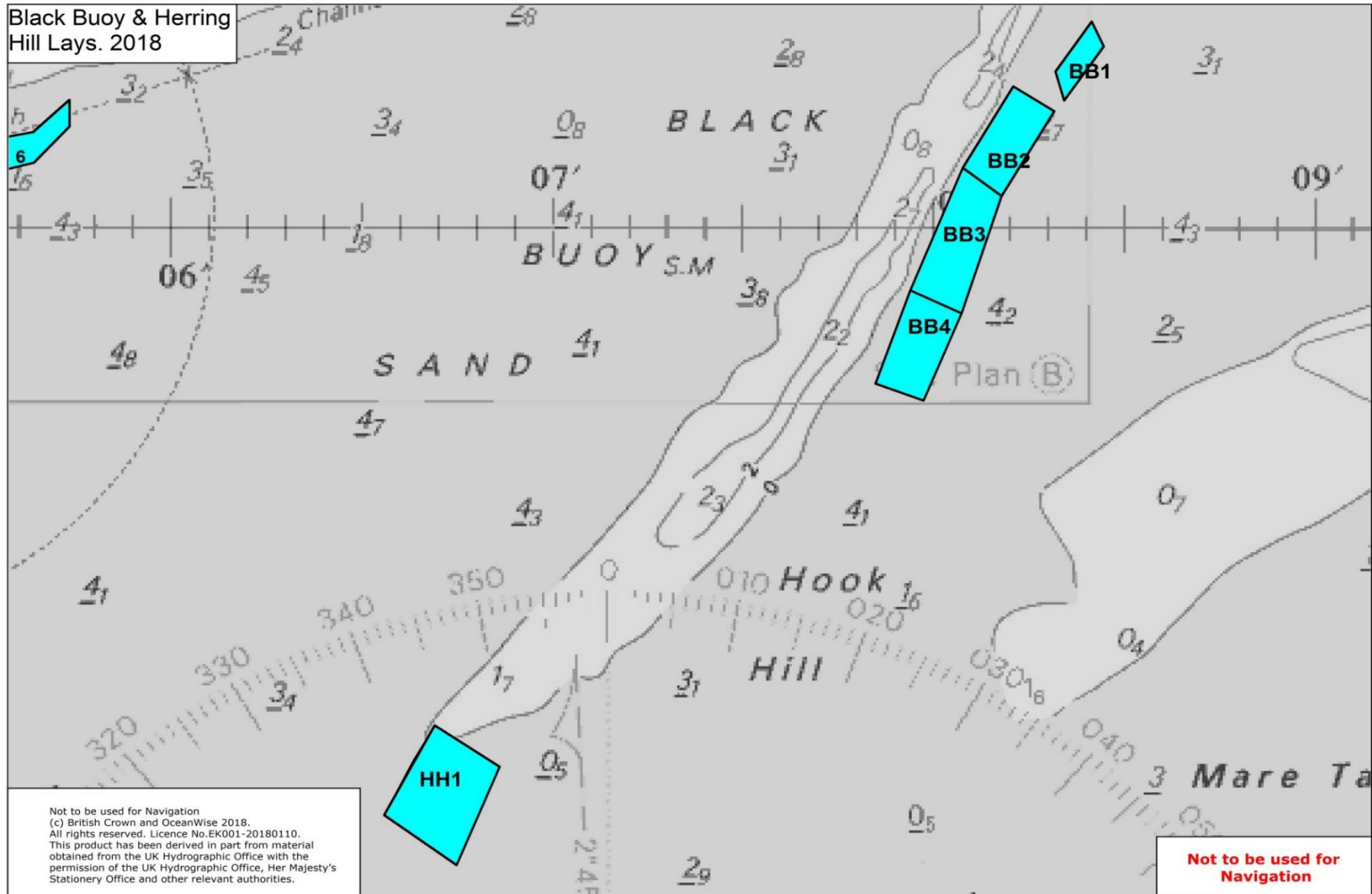
Pandora

	Latitude	Longitude
P2	52 51'.936 N	00 21'.755 E
	52 51'.924 N	00 21'.810 E
	52 51'.994 N	00 21'.839 E
	52 51'.974 N	00 21'.883 E
P6	52 51'.860 N	00 21'.573 E
	52 51'.808 N	00 21'.651 E
	52 51'.724 N	00 21'.557 E
	52 51'.576 N	00 21'.481 E
	52 51'.600 N	00 21'.385 E
	52 51'.726 N	00 21'.473 E
P7	52 51'.476 N	00 21'.377 E
	52 51'.471 N	00 21'.460 E
	52 51'.576 N	00 21'.481 E
	52 51'.600 N	00 21'.385 E

Wrangle

Site No.	Latitude	Longitude
W 1	53 00'.264N	00 12'.100E
	53 00'.262N	00 12'.266E
	52 00'.989N	00 12'.097E
	52 00'.979N	00 12'.194E
W 2	53 00'.262N	00 12'.266E
	53 00'.263N	00 12'.427E
	53 00'.067N	00 12'.373E
	52 59'.971N	00 12'.268E
	52 59'.979N	00 12'.194E

Black Buoy & Herring Hill Lays. 2018

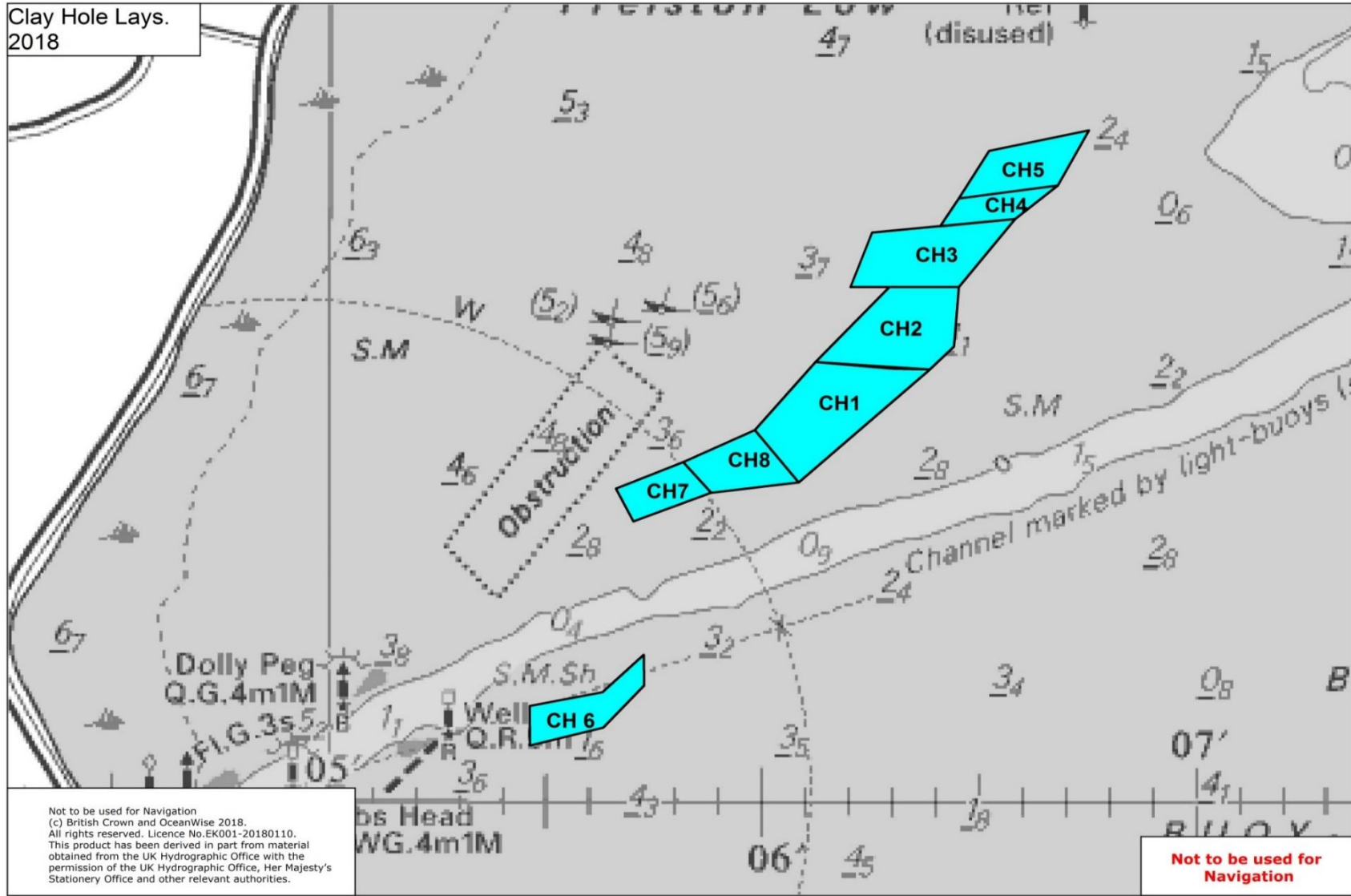


Not to be used for Navigation
(c) British Crown and OceanWise 2018.
All rights reserved. Licence No.EK001-20180110.
This product has been derived in part from material
obtained from the UK Hydrographic Office with the
permission of the UK Hydrographic Office, Her Majesty's
Stationary Office and other relevant authorities.

Not to be used for
Navigation

WFO Lays Chart 1 - showing the area of Black Buoy and Herring Hill sands and private lays

Clay Hole Lays.
2018

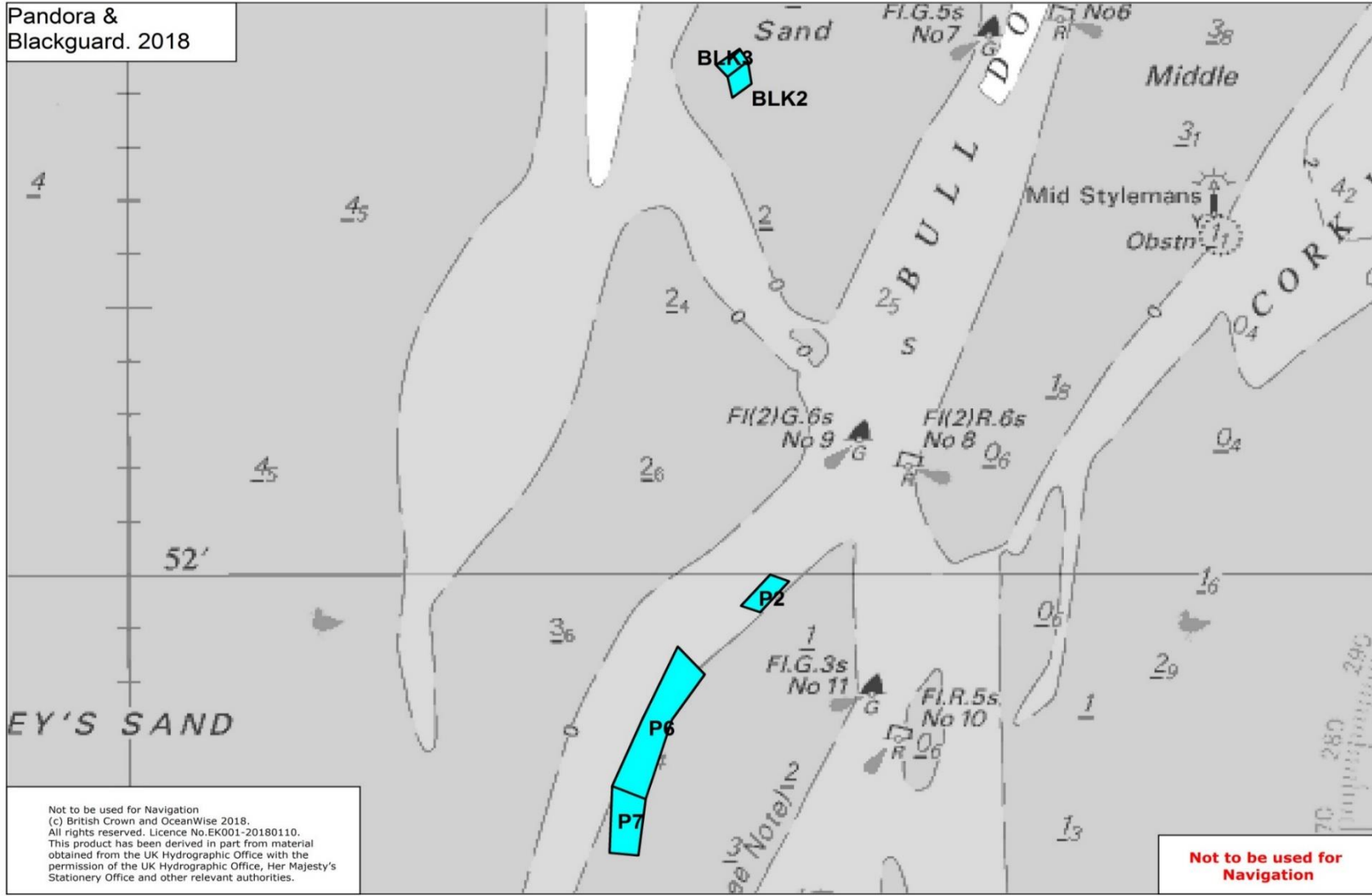


Not to be used for Navigation
(c) British Crown and OceanWise 2018.
All rights reserved. Licence No.EK001-20180110.
This product has been derived in part from material
obtained from the UK Hydrographic Office with the
permission of the UK Hydrographic Office, Her Majesty's
Stationery Office and other relevant authorities.

**Not to be used for
Navigation**

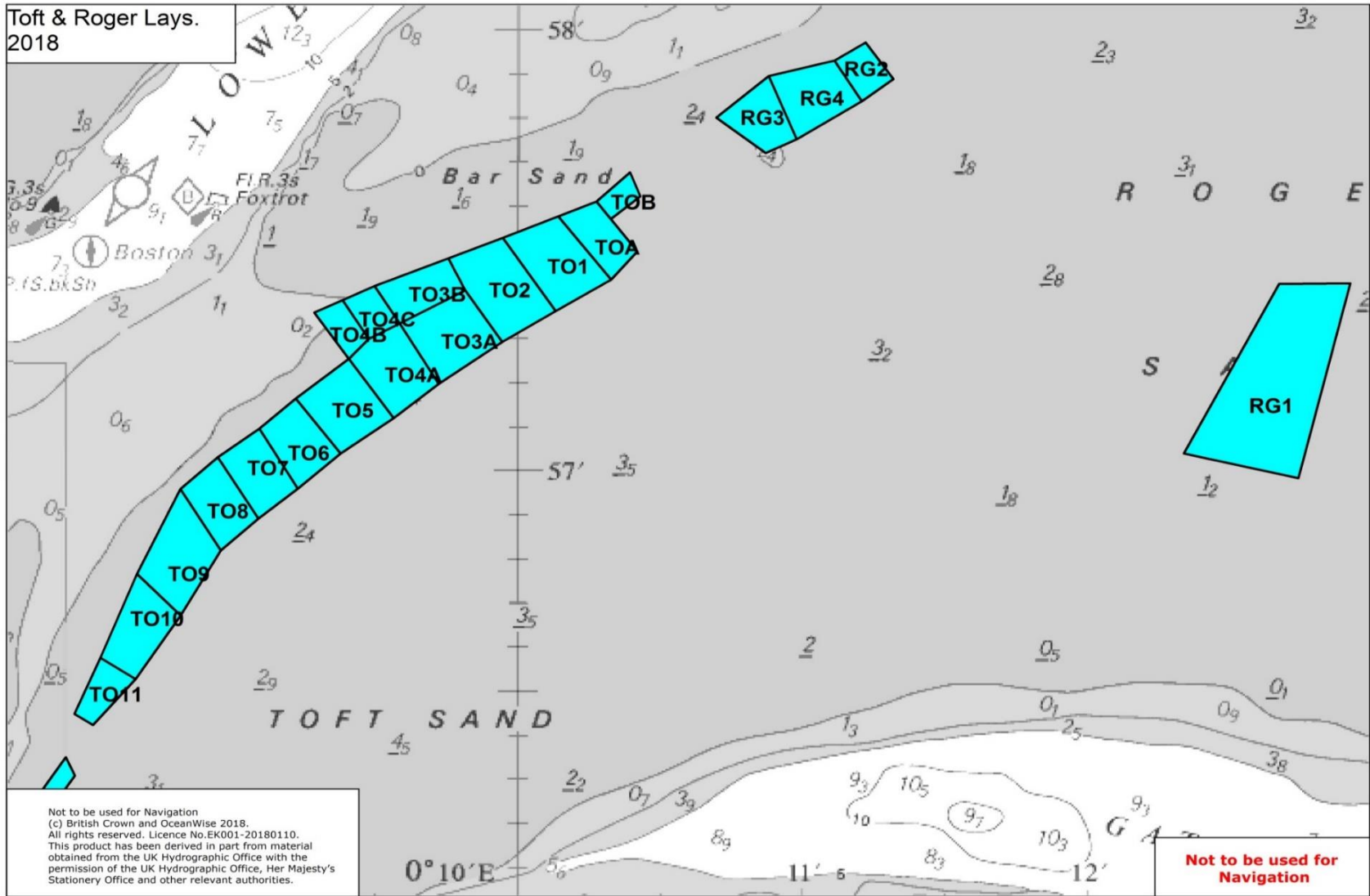
WFO Lays Chart 2 - showing the area of Clay Hole and private lays

Pandora &
Blackguard. 2018



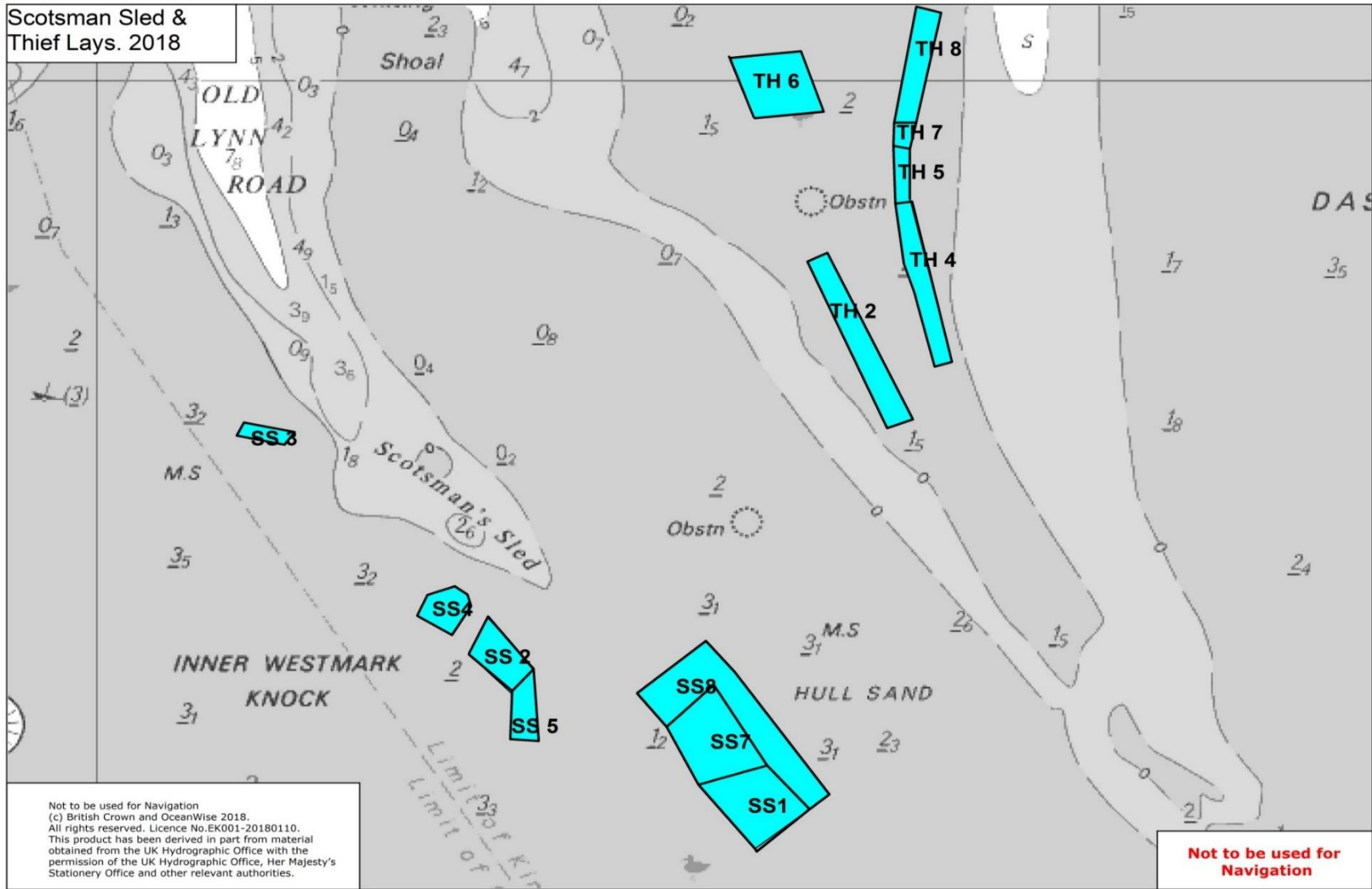
WFO Lays Chart 3 - showing the area of Pandora and Blackguard sands and private lays

Toft & Roger Lays.
2018



WFO Lays Chart 4 - showing the area of Toft and Roger sands and private lays

Scotsman Sled & Thief Lays. 2018



WFO Lays Chart 5 - showing the area of Scotsman Sled and Thief sands and private lays

Schedule 4 – Operating times

The following tables set out the Days of Operation for the cockle fishery as referred to in Exemption Condition 6 (Days of Operation).

	White rows are open periods
	Blue rows are closed periods

July

Date	Day	High Water	Height	High Water	Height	Open/Close
1	S	05:15	6.33	17:30	6.51	
2	S	06:07	6.69	18:27	6.83	
3	M	06:55	7.01	19:22	7.11	Open at 04:45
4	T	07:41	7.29	20:14	7.32	
5	W	06:26	7.50	21:05	7.40	
6	TH	09:11	7.61	21:56	7.33	
7	F	09:57	7.62	22:48	7.12	
8	S	10:43	7.49	23:41	6.80	Close at 01:45

Schedule 5 - Spatial Restrictions on Sunday Openings

For the purpose of Exemption Condition 7, the area designated as 'Holbeach Range' is the area defined by a straight line drawn between each of the following coordinates in sequence and then a further straight line between Waypoint ID M and A

Waypoint ID	Latitude	Longitude
A	52° 53.270 'N	0° 06.050'E
B	52° 53.767'N	0° 06.302'E
C	52° 54.396'N	0° 07.450'E
D	52° 54.709'N	0° 08.510'E
E	52° 54.710'N	0° 09.240'E
F	52° 54.873'N	0° 09.244'E
G	52° 54.960'N	0° 09.780'E
H	52° 55.068'N	0° 11.456'E
I	52° 54.359'N	0° 12.904'E
J	52° 53.709'N	0° 13.312'E
K	52° 51.635'N	0° 12.979'E
L	52° 50.954'N	0° 12.525'E
M	52° 50.905'N	0° 11.843'E