

# **Wash Interim Measures Cockle Fishery 2023 – Exemption conditions (updated 10 July 2023)**

*Fishers operating under an exemption issued under Byelaw 8 are required to undertake their fishing activities in accordance with the conditions set by the Authority.*

The following Exemption Conditions are applicable to fishers operating in the Wash Interim Measures Cockle Fishery 2023 from the date specified in Exemption Condition 3 (Opening / closing date).

## **Exemption Condition 1: Wash Fishery Order Regulations**

It is prohibited to fish other than in strict accordance with the Wash Fishery Order 1992 Regulations 3 to 17 in Schedule 1 as they existed prior to expiry of the Order.

For the purpose of these conditions, the Regulations at Schedule 1 should be read as follows:

- a) Reference to ‘Regulated Fishery’ or ‘Several Fishery’ should be read as fisheries managed under the interim measures; and
- b) Reference to ‘licences’ should be read as exemptions issued by the Authority to the Temporary Closure in The Wash.
- c) References to ‘licence conditions’ should be read as conditions attaching to exemptions issued by the Authority to the temporary Closure in The Wash.
- d) “prescribed species” means any of the species specified in the Wash Fishery Order 1992 as prescribed species.
- e) “cockle” means any bivalve mollusc belonging to the genus *Cerastoderma*;
- f) “prop-washing” means the practice of turning a vessel in tight circles to aid the fishing of cockles;

## **Exemption Condition 2: Fishing Method**

It is prohibited to fish for, take or remove from the fishery cockles using any method other than hand-working which can be augmented by prop-washing so far as it is permitted by Wash Fishery Order Regulation 17.

## **Exemption Condition 3: Opening / closing date**

It is prohibited to fish for, take or remove from the fishery cockles prior to the open date or after the close date of the fishery.

1. The fishery will open at 0415 hrs on 16 July 2023 (the open date) and in accordance with the Days of Operation (Exemption Condition 6) thereafter.
2. The Authority will notify Exemption Holders, Nominated Representatives and Deputies with at least 12 hours’ notice of a closure prior to the close date where it is judged necessary to do so to:

- a. meet the conservation objectives of the marine protected areas of The Wash or for the sustainability or the viability of the fishery; or
- b. prevent the Total Allowable Catch from being exceeded; or
- c. enable a cockle survey.

Exemption Condition 4: Closed areas

1. It is prohibited to fish for, take or remove from the fishery any cockles from areas marked as closed in the charts at Schedule 2 of these Exemption Conditions.
2. It is prohibited to fish for, take or remove from the fishery any cockles from areas in the charts at Schedule 3 (Shellfish Lays) of these Exemption Conditions.

Exemption Condition 5: Daily Catch Restriction (cockles)

The maximum weight of cockles as referred to in Wash Fishery Order Regulation 8 (Daily Catch Restrictions – Cockles) is 2000kg. For the purpose of determining the weight of catch, no allowance will be given for the weight of containers or sand or other material.

Exemption Condition 6: Days of Operation

It is prohibited to fish for, take or remove from the fishery cockles other than during publicised Days of Operation at Schedule 4.

Exemption Condition 7: Measures for the protection of small cockles

1. It is prohibited to fish for, take or remove from the fishery any cockles unless such have been sorted using an implement which is capable of rejecting the majority of cockles which are under 10mm (width) and / or are of the 2022-year class of cockles;
2. Cockles of less than 10mm should be left on the cockle beds and not landed. Where cockles of less than 10mm are landed excessively, the Authority will consider closing the fishery or parts thereof.

*Failure to comply with an exemption condition is an offence under section 163(1) of the Marine and Coastal Access Act 2009. The master, owner and charterer (if any) of a vessel used in the commission of an offence shall each be guilty of any such offence and liable to an unlimited fine on summary conviction in accordance with section 163(2) and (3).*

Exemption conditions are subject to change and fishers will be notified of any amendments to the exemption conditions.

## Schedule 1 - Wash Fishery Order 1992 Regulations



### Eastern Inshore Fisheries and Conservation Authority

#### Wash Fishery Order 1992

#### Wash Fishery Order 1992 Regulations

The Authority for the Eastern Inshore Fisheries and Conservation District in exercise of its powers under Article 7 of the Wash Fishery Order 1992 under the Sea Fisheries (Shellfish) Act 1967, as amended, has made the following regulations;

#### 1. Interpretation

In these Regulations:

- 1) “the Order” means the Wash Fishery Order 1992 (SI 1992/3038);
- 2) “Regulated Fishery” means a fishery as described by Eastern IFCA in accordance with Article 8(5) of the Order and undertaken under the authority of a licence issued under Article 8(1) of the Order;
- 3) “Several Fishery” means fishing under the authority of a lease granted under Article 6(1) of the Order;
- 4) “prescribed species” means any of the species specified in the Wash Fishery Order 1992 as prescribed species.
- 5) “cockle” means any bivalve mollusc belonging to the genus *Cerastoderma*;
- 6) “mussel” means any of the species belonging to the genus *Mytilus*;
- 7) “harvestable mussel fishery” means a mussel fishery, the licence conditions for which, allow for mussels fished for, taken or removed from the fishery to be sold directly to a market;

8) “relaying mussel fishery” means a mussel fishery, the licence conditions for which do not allow mussels to be sold directly to market but instead, must be relayed for the purpose of aquaculture;

9) “licence” means a licence granted under Article 8(1) of Order;

10) “bottom-towed-gear” means any fishing gear designed to be towed, dragged or pushed through the water whilst in contact with the seabed;

11) “prop-washing” means the practice of turning a vessel in tight circles to aid the fishing of cockles;

## **2. Application**

The following Regulations apply to persons fishing under the authority of a licence.

## **3. Bottom-towed-gear restrictions**

1) A person must not fish for, take or remove from the fishery any of the prescribed species using bottom-towed-gear unless a written certificate of approval for that bottom-towed-gear has been provided by the Authority in accordance with Regulation 4.

2) A person must not fish for, take or remove from the fishery, cockles using;

- a) more than one instrument of bottom-towed-gear; or
- b) a hydraulic suction dredge with an aggregate dredge head width of more than 76cm.

3) Without written authorisation from the Authority, a person must not fish for, take or remove from the fishery, mussels using a mussel dredge with an inside opening of more than one meter in width.

4) A person must not fish for, take or remove from the fishery any of the prescribed species other than cockles using more than two instruments of bottom-towed-gear.

## **4. Bottom-towed-gear - Approval**

1) A provisional certificate of approval may be issued which will be valid for one month.

2) A full certificate of approval may be issued, which will be valid until 31 December following the date the certification is issued, where bottom-towed-gear meets the following conditions:

- a) The bottom-towed-gear does not result in more than 10% by weight of the target species being visibly damaged;
- b) The Authority has been advised by scientists who appear to them to be suitably qualified that the bottom-towed-gear does not cause unacceptable damage to habitats or species;
- c) Bottom-towed-gear and associated catch sorting equipment is of a specification required by the Authority for reasons relating to fisheries management or are pursuant of meeting 4(2)(a) and 4(2)(b) above.

3) For the purpose of this regulation, an organism is considered visibly damaged when on examination it is seen that there are visible cracks, chips or there is other damage to the shell. The damage rate will be determined using representative samples of shellfish retained and rejected by the operation of the bottom-towed-gear.

## **5. Vessel restrictions**

- 1) A person must not use a vessel exceeding 14 meters in overall length to fish for, take or remove from the fishery any of the prescribed species unless authorised by the Authority in accordance with sub-paragraph 2.
- 2) The Authority may exempt vessels from sub-paragraph 1 where evidence is provided that the owner or skipper of the vessel has used the vessel to fish for, take or remove from the fishery any of the prescribed species from within the Regulated Fishery prior to the date of the advertisement of the Order.
- 3) Exemption in accordance with sub-paragraph 2 shall cease if the vessel changes ownership.

## **6. Tenders**

A vessel must not carry or tow a tender which is greater than six metres in overall length.

## **7. Sorting of catch**

Any material rejected through the sorting of catch of any of the prescribed species must be returned immediately to the sea or seabed, as nearly as possible to the place from which it was taken and spread thinly and evenly over that area.

## **8. Daily catch restrictions (cockles)**

- 1) A person must not, in any one calendar day, fish for, take (save for doing so with the intention of riddling or otherwise sorting catch in

accordance with regulation 7) or remove from the fishery more than the maximum weight of cockles specified in the licence conditions by hand.

2) A person must not, in any one calendar day, fish for or take (save for doing so with the intention of riddling or otherwise sorting catch in accordance with regulation 7) or remove from the fishery more than 4000 kilograms of cockles by dredge.

3) For the purpose of determining the weight of catch no allowance will be given for the weight of any containers or sand or other material.

4) A person must not fish for, take or remove from the fishery any cockles by hand if, during the same calendar day, that person has fished for, taken or removed any cockles by dredge.

5) A person must not fish for, take or remove from the fishery any cockles by dredge if, during the same calendar day, that person has fished for, taken or removed any cockles by hand.

#### **9. Daily catch restrictions (mussels)**

1) A person must not, in any one calendar day, fish for or take (save for doing so with the intention of riddling or otherwise sorting catch in accordance with regulation 7) or remove from the fishery:

a) More than 4000 kilograms of mussels during a harvestable mussel fishery; or

b) More than 8000 kilograms of mussels during a relaying mussel fishery.

2) For the purpose of determining the weight of catch no allowance will be given for the weight of any containers or sand or other material.

3) A person must not fish for, take or remove from the fishery any mussels from a harvestable mussel fishery if, during the same calendar day, that person has fished for, taken or removed from the fishery mussels from a relaying mussel fishery.

4) A person must not fish for, take or remove from the fishery any mussels from a relaying mussel fishery if, during the same calendar day, that person has fished for, taken or removed from the fishery mussels from a harvestable mussel fishery.

#### **10. Mussels (*Mytilus edulis*) minimum size**

1) A person must not remove from the boundary of the Wash Fishery Order 1992 any mussels (*Mytilus edulis*) from within the Regulated Fishery which are less than 45mm in length but must return such immediately to the sea in accordance with sub-paragraph 2 (below)

unless they are being fished for, taken or removed as part of a relaying mussel fishery.

2) Mussels and any material arising from the sorting of mussels must be returned immediately to the sea or seabed, as nearly as possible to the place from which it was taken and spread thinly and evenly over that area.

### **11. Seed movement**

Without prejudice to the Article 12 of the Wash Fishery Order 1992, a person must not transport any shellfish under an authorisation granted by said article by road unless an application for such is completed which will require the following information:

- a) Destination of the shellfish; and
- b) The date of the proposed transport.

### **12. Weekly catch returns**

An accurately completed weekly catch return form, supplied by Eastern IFCA, must be returned for each week of fishing, to Eastern IFCA offices by no later than Friday of the calendar week following any fishing activity.

### **13. Transshipping prohibition**

A person must not tranship or otherwise relocate any of the prescribed species, or containers of any description containing any of the prescribed species, fished from the Regulated Fishery from one vessel to another.

### **14. Requirement to land (cockles)**

- 1) A person fishing for cockles must:
  - a) take any cockles fished for from the Regulated fishery straight to port;
  - b) land such cockles immediately; and
  - c) not leave cockles on the sand or deposited in the water in bags or any other container for later collection.
- 2) A person must not land cockles fished for from the Regulated fishery on more than one occasion during one calendar day.

### **15. Dual fishing prohibition**

- 1) A person must not fish for, take or remove from the fishery any of the prescribed species from the Regulated Fishery on the same

calendar day as fishing for, taking or removing from the fishery the same prescribed species from outside of the Regulated Fishery or from a Several Fishery.

2) A person must not have on board any bottom-towed-gear which could be used to fish for, take or remove from the fishery any of the prescribed species when fishing for, taking or removing from the fishery any of the prescribed species from a hand-work fishery.

## **16. Standard bags**

A person must not land mussels or cockles fished from the Regulated Fishery unless such are contained in a bag which must:

1) be of the following dimensions:

- a) 120 centimetres or 60 centimetres in height;
- b) 97 centimetres in depth;
- c) 97 centimetres in width: and

2) have the words 'Wash Fishery Order' written on at least two sides with lettering which is at least 10 centimetres tall.

## **17. Prop-washing**

1) A person fishing for cockles must not:

- a) use an anchor which affixes the vessel to the bottom of the seabed during the practice of prop-washing;
- b) conduct prop-washing in such a manner as to cause more than one ring to be formed in the seabed;

2) A person must spread any cockles dislodged from prop-washing thinly and evenly over the ground, as nearly as possible to the area from which they were dislodged before leaving the bed.

## **18. Revocations**

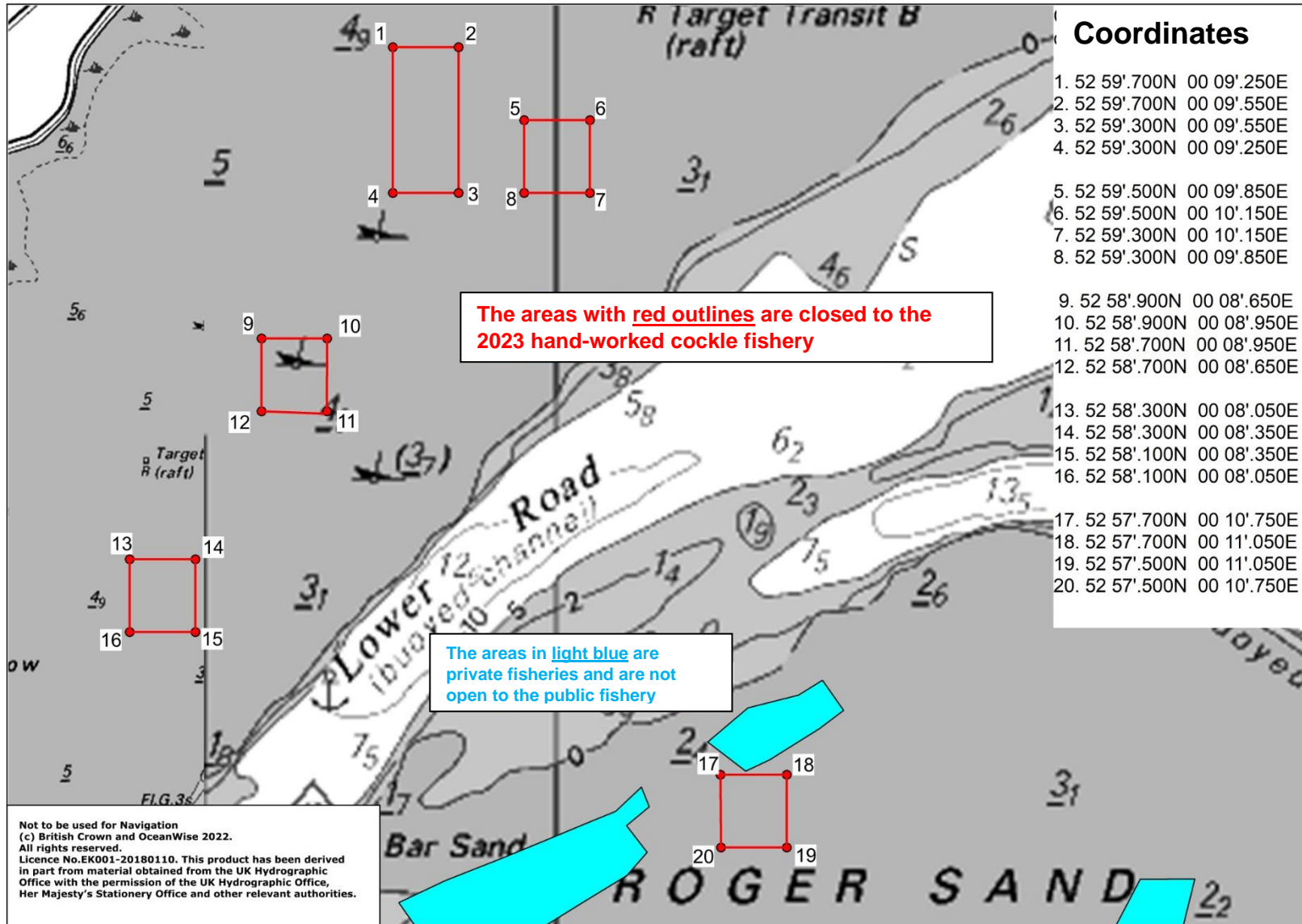
The Wash Fishery Order 1992 Regulations in force immediately before the date on which these Regulations come into force, are hereby revoked.



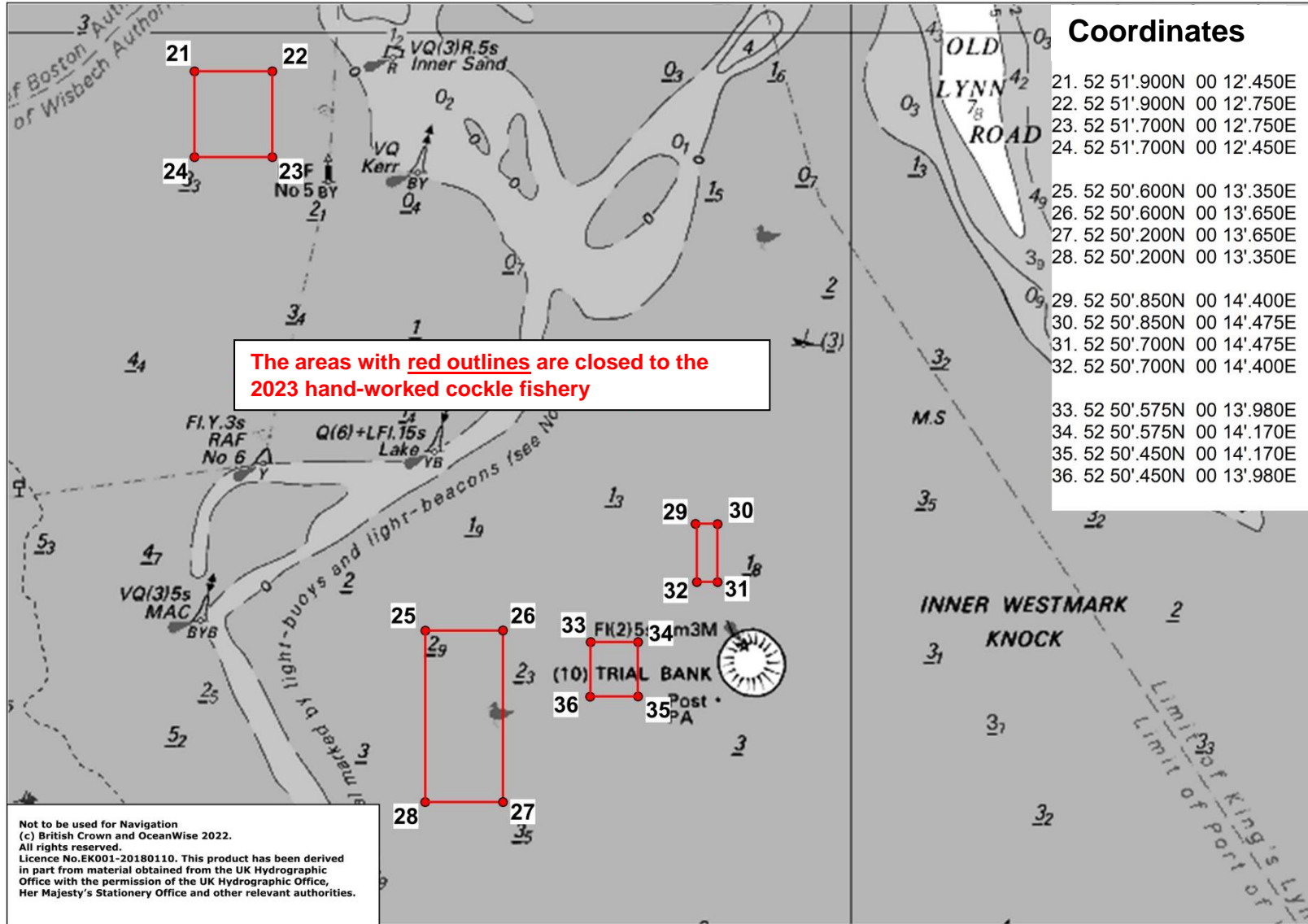
## **Schedule 2: Exemption Condition 4 (1) – Closed Areas**

This schedule sets out the areas closed to the fishery under Exemption Condition 4 – Closed Areas.

Closed areas are defined by a boundary drawn by the series of straight lines connecting each point listed in the tables to the next point in sequence and finally returning to the first point in each table as set out in the charts for illustrative purposes.



**Chart 1 – Positions of closures on Butterwick and Roger sands to protect Year-0 juvenile cockles**



**Chart 2 – Positions of closures on Holbeach and IWMK sands to protect Year-0 juvenile cockles**

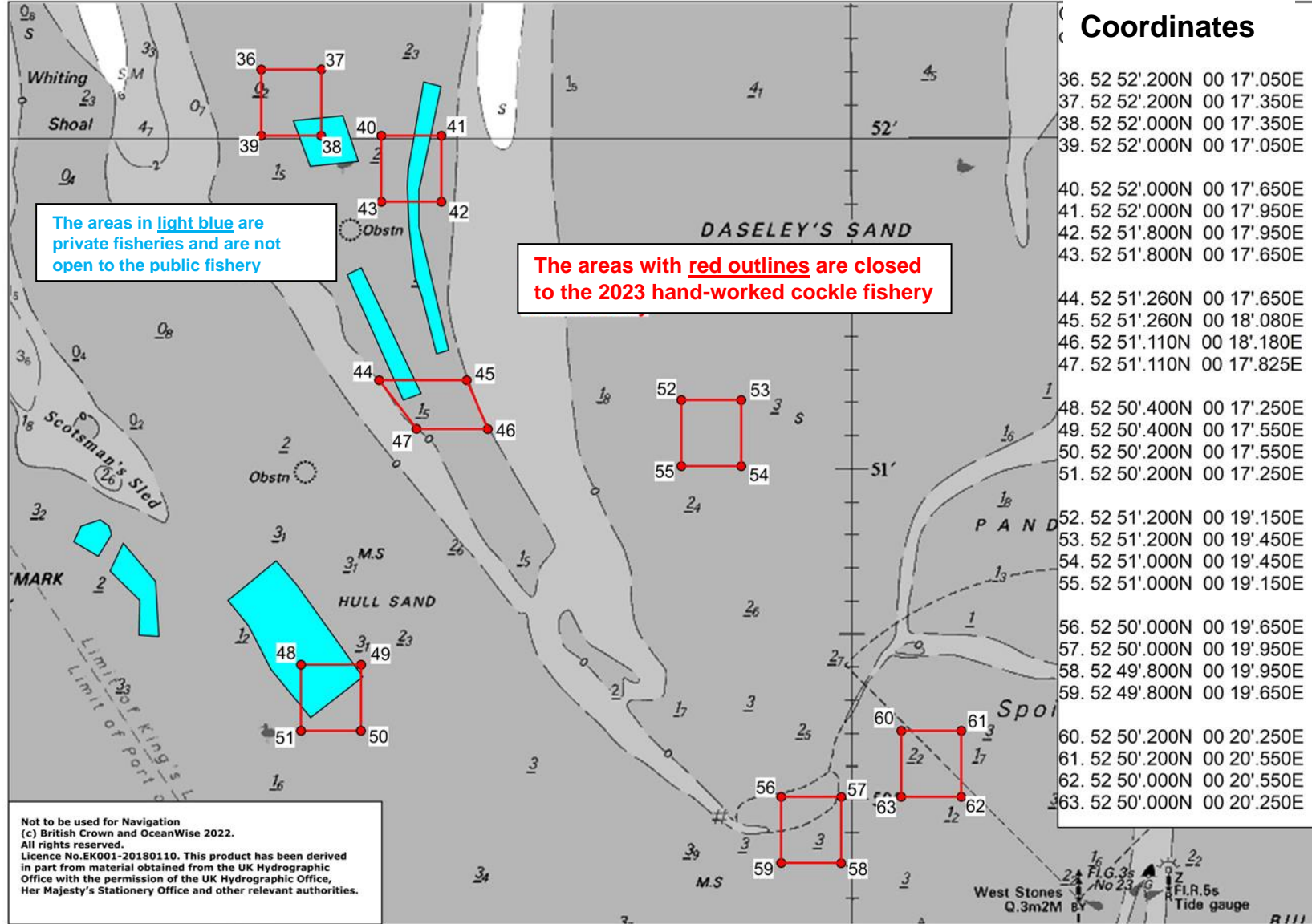


Chart 3 – Positions of closures on Breast, Thief and Daseley’s sands to protect Year-0 juvenile cockles

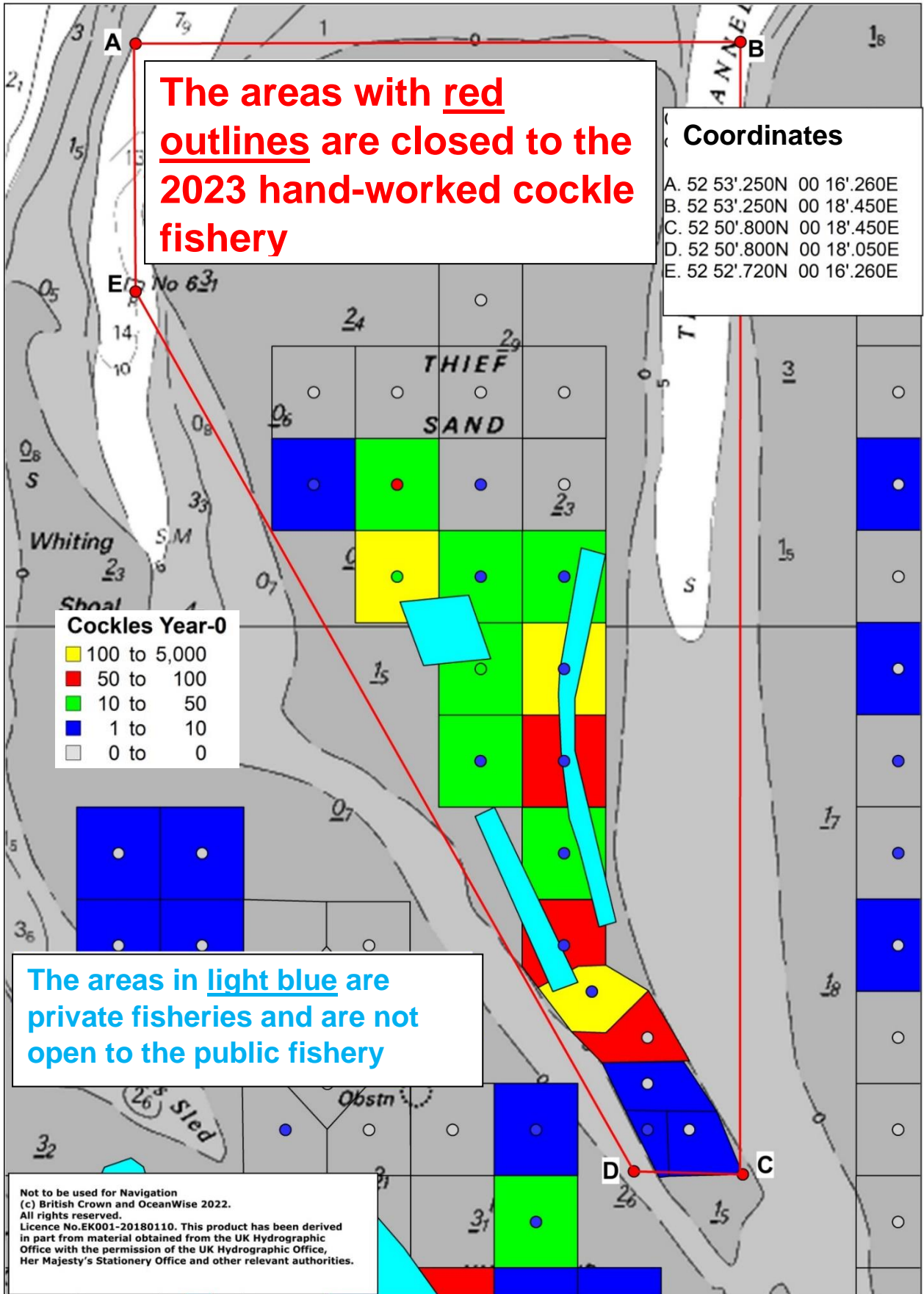
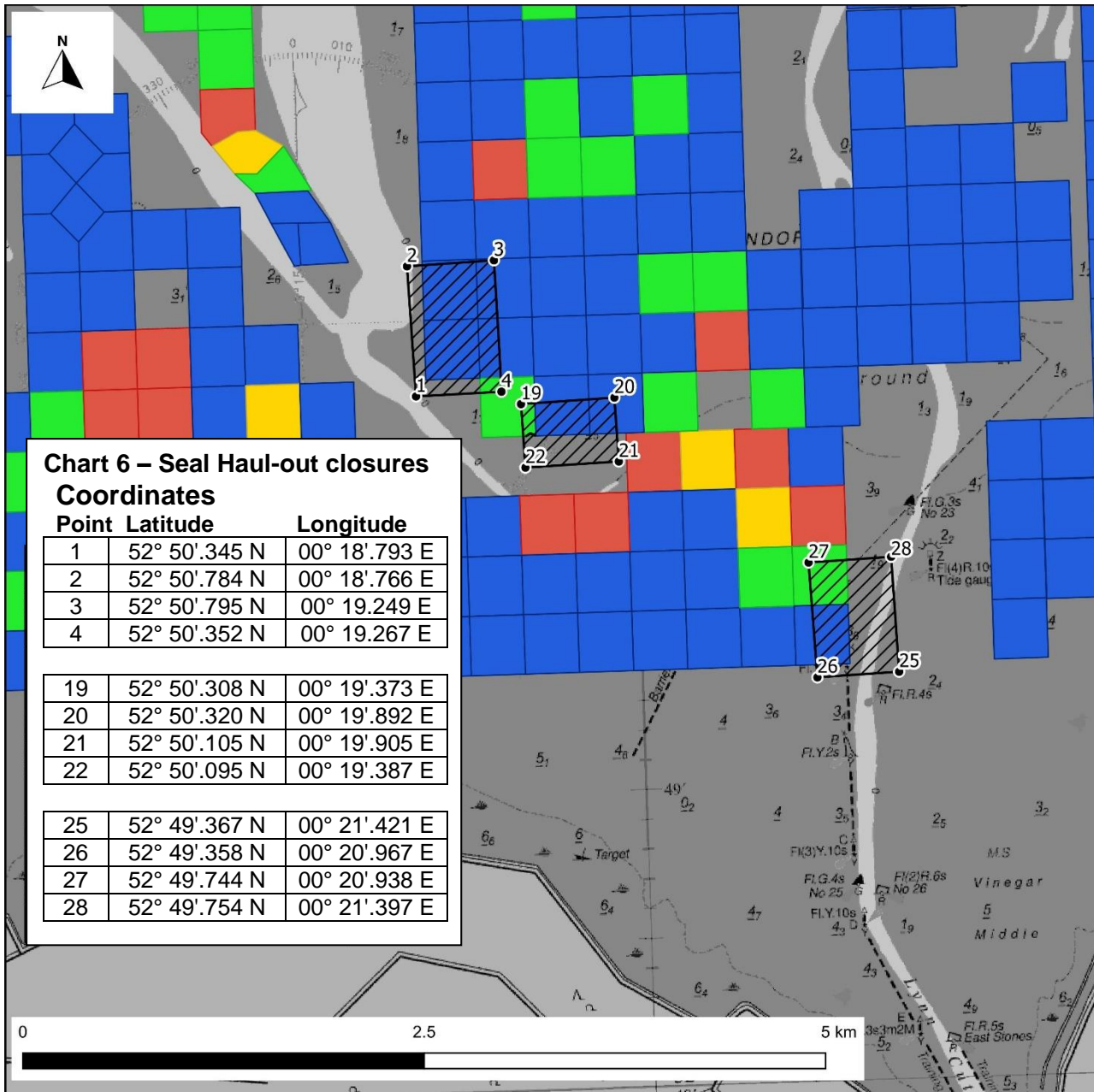


Chart 4 - closure of the Thief Sand



### Wash cockle fishery 2023 – Seal haulout closures

Closed Areas (1st June - 31st August)

**Total Cockle Weight (g/0.01m2)**

0 - 23

23 - 70

70 - 164

164 - 500

Created by: ZP  
Checked by: EJ  
Date: June 2023



**Not to be used for navigation**

(c) British Crown and OceanWise 2023. All rights reserved.

Licence No.EK001-20180110.

This product has been derived in part from material obtained from the UK Hydrographic Office with the permission of the UK Hydrographic Office, His Majesty's Stationery Office and other relevant authorities.



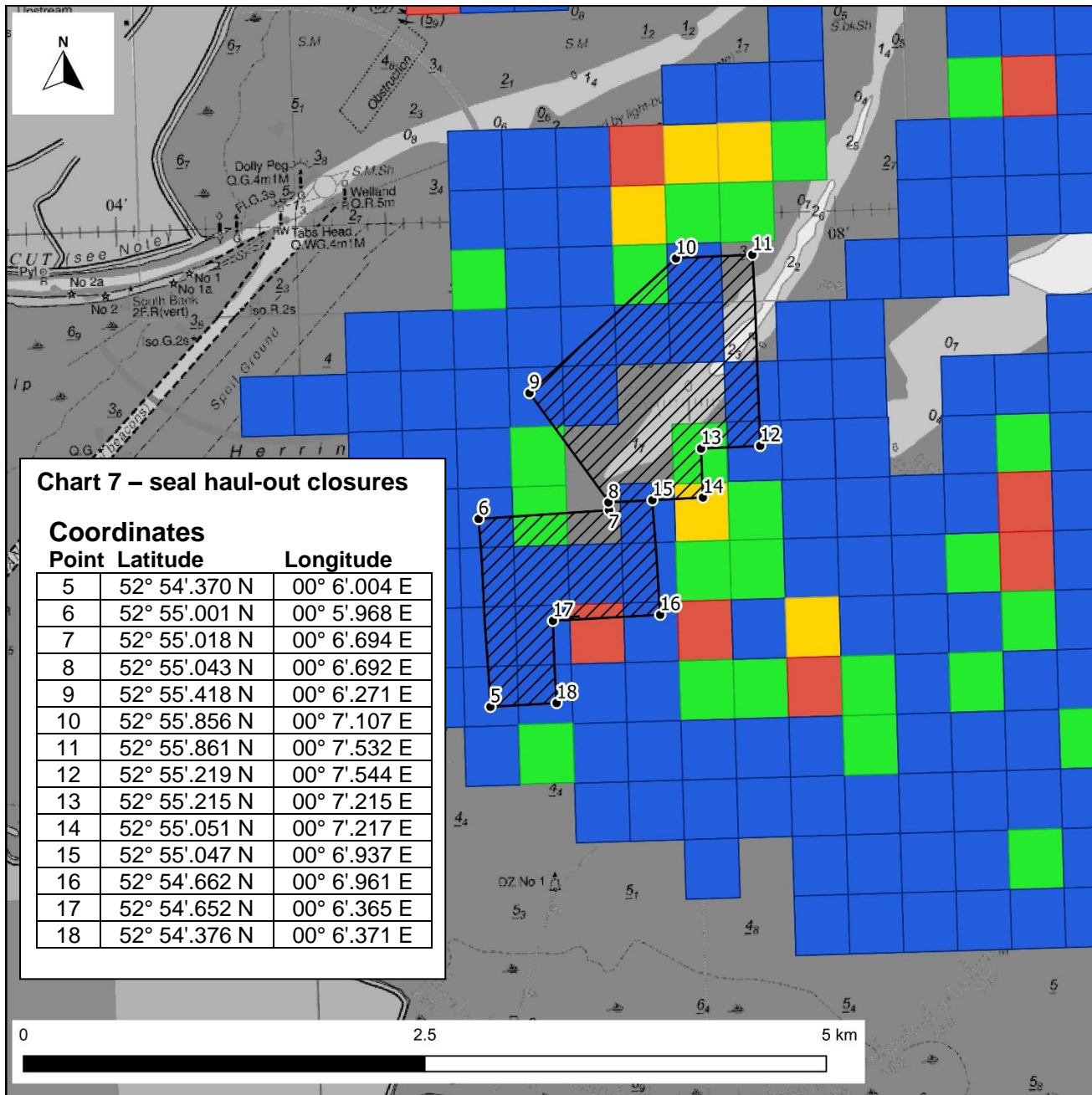
#### Chart 6 – Seal Haul-out closures

##### Coordinates

Point	Latitude	Longitude
1	52° 50'.345 N	00° 18'.793 E
2	52° 50'.784 N	00° 18'.766 E
3	52° 50'.795 N	00° 19'.249 E
4	52° 50'.352 N	00° 19'.267 E

19	52° 50'.308 N	00° 19'.373 E
20	52° 50'.320 N	00° 19'.892 E
21	52° 50'.105 N	00° 19'.905 E
22	52° 50'.095 N	00° 19'.387 E

25	52° 49'.367 N	00° 21'.421 E
26	52° 49'.358 N	00° 20'.967 E
27	52° 49'.744 N	00° 20'.938 E
28	52° 49'.754 N	00° 21'.397 E



### Wash cockle fishery 2023 – Seal haulout closures

Closed Areas (1st June - 31st August)

**Total Cockle Weight (g/0.01m2)**

- 0 - 23
- 23 - 70
- 70 - 164
- 164 - 500

Created by: ZP  
 Checked by: EJ  
 Date: June 2023



**Not to be used for navigation**

(c) British Crown and OceanWise 2023. All rights reserved.

Licence No.EK001-20180110.

This product has been derived in part from material obtained from the UK Hydrographic Office with the permission of the UK Hydrographic Office, His Majesty's Stationery Office and other relevant authorities.



### Chart 7 – seal haul-out closures

#### Coordinates

Point Latitude Longitude

5	52° 54'.370 N	00° 6'.004 E
6	52° 55'.001 N	00° 5'.968 E
7	52° 55'.018 N	00° 6'.694 E
8	52° 55'.043 N	00° 6'.692 E
9	52° 55'.418 N	00° 6'.271 E
10	52° 55'.856 N	00° 7'.107 E
11	52° 55'.861 N	00° 7'.532 E
12	52° 55'.219 N	00° 7'.544 E
13	52° 55'.215 N	00° 7'.215 E
14	52° 55'.051 N	00° 7'.217 E
15	52° 55'.047 N	00° 6'.937 E
16	52° 54'.662 N	00° 6'.961 E
17	52° 54'.652 N	00° 6'.365 E
18	52° 54'.376 N	00° 6'.371 E

0 2.5 5 km

### **Schedule 3: Exemption Condition 4(2) – Shellfish Lays**

This schedule sets out the areas closed to the fishery under Exemption Condition 4(2).

Closed areas are defined by a boundary drawn by the series of straight lines connecting each point listed in the tables to the next point in sequence and finally returning to the first point in each table as set out in the charts for illustrative purposes.



## Positions of Lays

## Tofts

Site No.	Latitude	Longitude
TO B	52° 57.600'N	0° 10.269'E
	52° 57.667'N	0° 10.386'E
	52° 57.560'N	0° 10.319'E
	52° 57.612'N	0° 10.422'E
TO A	52° 57.487'N	0° 10.412'E
	52° 57.600'N	0° 10.269'E
	52° 57.423'N	0° 10.320'E
	52° 57.566'N	0° 10.135'E
TO 1	52° 57.423'N	0° 10.320'E
	52° 57.566'N	0° 10.135'E
	52° 57.352'N	0° 10.126'E
	52° 57.518'N	0° 09.940'E
TO 2	52° 57.352'N	0° 10.126'E
	52° 57.518'N	0° 09.940'E
	52° 57.469'N	0° 09.741'E
	52° 57.282'N	0° 09.938'E
TO 3a	52° 57.324'N	0° 09.578'E
	52° 57.399'N	0° 09.808'E
	52° 57.187'N	0° 09.716'E
	52° 57.282'N	0° 09.938'E
TO 3b	52° 57.324'N	0° 09.578'E
	52° 57.409'N	0° 09.490'E
	52° 57.469'N	0° 09.741'E
	52° 57.399'N	0° 09.808'E
TO 4a	52° 57.110'N	0° 09.558'E
	52° 57.244'N	0° 09.400'E
	52° 57.324'N	0° 09.578'E
	52° 57.187'N	0° 09.716'E
TO 4b	52° 57.244'N	0° 09.400'E
	52° 57.289'N	0° 09.470'E
	52° 57.377'N	0° 09.378'E
	52° 57.349'N	0° 09.278'E
TO 4c	52° 57.324'N	0° 09.578'E
	52° 57.289'N	0° 09.470'E
	52° 57.377'N	0° 09.378'E
	52° 57.409'N	0° 09.490'E

Site No.	Latitude	Longitude
TO 5	52° 57.030'N	0° 09.372'E
	52° 57.154'N	0° 09.214'E
	52° 57.110'N	0° 09.558'E
	52° 57.244'N	0° 09.400'E
TO 6	52° 56.950'N	0° 09.221'E
	52° 57.086'N	0° 09.086'E
	52° 57.030'N	0° 09.372'E
	52° 57.154'N	0° 09.214'E
TO 7	52° 56.950'N	0° 09.221'E
	52° 57.086'N	0° 09.086'E
	52° 56.882'N	0° 09.083'E
	52° 57.021'N	0° 08.940'E
TO 8	52° 56.810'N	0° 08.951'E
	52° 56.949'N	0° 08.809'E
	52° 56.882'N	0° 09.083'E
	52° 57.021'N	0° 08.940'E
TO 9	52° 56.810'N	0° 08.951'E
	52° 56.949'N	0° 08.809'E
	52° 56.663'N	0° 08.810'E
	52° 56.757'N	0° 08.657'E
TO 10	52° 56.567'N	0° 08.529'E
	52° 56.519'N	0° 08.652'E
	52° 56.663'N	0° 08.810'E
	52° 56.757'N	0° 08.657'E
TO 11	52° 56.567'N	0° 08.529'E
	52° 56.519'N	0° 08.652'E
	52° 56.440'N	0° 08.438'E
	52° 56.415'N	0° 08.503'E

## Clay Hole

	Latitude	Longitude
CH 1	52 56'.54 N	00 05'.98 E
	52 56'.54 N	00 06'.18 E
	52 56'.63 N	00 06'.30 E
	52 56'.64 N	00 06'.12 E
CH 1a	52 56'.630 N	00 06'.300 E
	52 56'.629 N	00 06'.383 E
	52 56'.540 N	00 06'.180 E
	52 56'.540 N	00 06'.980 E
	52 56'.463 N	00 06'.081 E
CH 2	52 56'.64 N	00 06'.12 E
	52 56'.63 N	00 06'.30 E
	52 56'.75 N	00 06'.45 E
	52 56'.54 N	00 06'.29 E
CH 2a	52 56'.629 N	00 06'.383 E
	52 56'.663 N	00 06'.439 E
	52 56'.750 N	00 06'.450 E
	52 56'.630 N	00 06'.300 E
CH 3	52 56'.75 N	00 06'.45 E
	52 56'.75 N	00 06'.20 E
	52 56'.83 N	00 06'.25 E
	52 56'.85 N	00 06'.58 E
CH 4	52 56'.85 N	00 06'.58 E
	52 56'.81 N	00 06'.35 E
	52 56'.88 N	00 06'.45 E
	52 56'.90 N	00 06'.68 E
CH 5	52 56'.88 N	00 06'.45 E
	52 56'.90 N	00 06'.68 E
	52 56'.95 N	00 06'.52 E
	52 56'.98 N	00 06'.75 E
CH 6	52 56'.155 N	00 05'.629 E
	52 56'.135 N	00 05'.461 E
	52 56'.077 N	00 05'.462 E
	52 56'.103 N	00 05'.631 E
	52 56'.165 N	00 05'.725 E
	52 56'.210 N	00 05'.724 E
CH 7	52 56'.493 N	00 05'.815 E
	52 56'.448 N	00 05'.879 E
	52 56'.454 N	00 05'.660 E
	52 56'.406 N	00 05'.700 E
CH 8	52 56'.540 N	00 05'.980 E
	52 56'.463 N	00 06'.081 E
	52 56'.493 N	00 05'.815 E
	52 56'.448N	00 05'.879 E

## Roger

Site No.	Latitude	Longitude
RG 1	52 <sup>0</sup> 56'.973N	0 <sup>0</sup> 12'.732E
	52 <sup>0</sup> 57'.029N	0 <sup>0</sup> 12'.330E
	52 <sup>0</sup> 57'.414N	0 <sup>0</sup> 12'.914E
	52 <sup>0</sup> 57'.413N	0 <sup>0</sup> 12'.664E
RG 2	52 57'.960N	00 11'.213E
	52 57'.877N	00 11'.310E
	52 57'.827N	00 11'.200E
	52 57'.919N	00 11'.103E
RG 3	52 57'.884N	00 10'.873E
	52 57'.741N	00 10'.971E
	52 57'.710N	00 10'.862E
	52 57'.790N	00 10'.689E
RG 4	52 57'.827N	00 11'.200E
	52 57'.919N	00 11'.103E
	52 57'.884N	00 10'.873E
	52 57'.741N	00 10'.971E

## Hook Hill/Tofts

Lay No.	Latitude	Longitude
BB 1	52 <sup>0</sup> 56.340'N	0 <sup>0</sup> 08.410'E
	52 <sup>0</sup> 56.300'N	0 <sup>0</sup> 08.440'E
	52 <sup>0</sup> 56.260'N	0 <sup>0</sup> 08.310'E
	52 <sup>0</sup> 56.210'N	0 <sup>0</sup> 08.340'E
BB 2	52 <sup>0</sup> 56.232'N	0 <sup>0</sup> 08.202'E
	52 <sup>0</sup> 56.190'N	0 <sup>0</sup> 08.310'E
	52 <sup>0</sup> 56.094'N	0 <sup>0</sup> 08.070'E
	52 <sup>0</sup> 56.046'N	0 <sup>0</sup> 08.172'E
BB 3	52 <sup>0</sup> 56.094'N	0 <sup>0</sup> 08.070'E
	52 <sup>0</sup> 56.046'N	0 <sup>0</sup> 08.172'E
	52 <sup>0</sup> 55.847'N	0 <sup>0</sup> 08.067'E
	52 <sup>0</sup> 55.886'N	0 <sup>0</sup> 07.932'E
BB 4	52 <sup>0</sup> 55.699'N	0 <sup>0</sup> 07.967'E
	52 <sup>0</sup> 55.728'N	0 <sup>0</sup> 07.841'E
	52 <sup>0</sup> 55.847'N	0 <sup>0</sup> 08.067'E
	52 <sup>0</sup> 55.886'N	0 <sup>0</sup> 07.932'E

## Herring Hill

	Latitude	Longitude
HH 1	52 <sup>0</sup> 55.12'N	0 <sup>0</sup> 06.91'E
	52 <sup>0</sup> 55.03'N	0 <sup>0</sup> 06.75'E
	52 <sup>0</sup> 55.00'N	0 <sup>0</sup> 06.60'E
	52 <sup>0</sup> 55.06'N	0 <sup>0</sup> 06.70'E
	52 <sup>0</sup> 55.12'N	0 <sup>0</sup> 06.73'E

### Thief

Site No.	Latitude	Longitude
TH2	52 51'.200 N	00 17'.760 E
	52 51'.580 N	00 17'.480 E
	52 51'.220 N	00 17'.850 E
	52 51'.600 N	00 17'.550 E
TH4	52 51'.712 N	00 17'.788 E
	52 51'.575 N	00 17'.819 E
	52 51'.511 N	00 17'.853 E
	52 51'.435 N	00 17'.886 E
	52 51'.340 N	00 17'.926 E
	52 51'.351 N	00 17'.987 E
	52 51'.717 N	00 17'.846 E
TH5	52 51'.844 N	00 17'.781 E
	52 51'.719 N	00 17'.789E
	52 51'.724 N	00 17'.838 E
	52 51'.837 N	00 17'.839 E
TH6	52 51'.922 N	00 17'.536 E
	52 52'.045 N	00 17'.208 E
	52 52'.060 N	00 17'.475 E
	52 51'.908 N	00 17'.292 E
TH7	52 51'.897 N	00 17'.784 E
	52 51'.897 N	00 17'.861 E
	52 51'.837 N	00 17'.839 E
	52 51'.845 N	00 17'.781 E
TH8	52 51'.897 N	00 17'.784 E
	52 51'.897 N	00 17'.861 E
	52 52'.162 N	00 17'.861 E
	52 52'.148 N	00 17'.948 E

### Blackguard

	Latitude	Longitude
BLK2	52 52'.951 N	00 21'.774 E
	52 52'.883 N	00 21'.729 E
	52 52'.909 N	00 21'.784 E
	52 52'.922 N	00 21'.715 E
BLK3	52 52'.951 N	00 21'.774 E
	52 52'.974 N	00 21'.750 E
	52 52'.944 N	00 21'.682 E
	52 52'.922 N	00 21'.715 E

### Scotsman's Sled

	Latitude	Longitude
SS1	52°50'.386N	0°17'.100E
	52°50'.240N	0°17'.298E
	52°50'.330N	0°17'.489E
	52°50'.430N	0°17'.340E
SS2	52°50'.652N	0°16'.523E
	52°50'.600N	0°16'.447E
	52°50'.686N	0°16'.296E
	52°50'.770N	0°16'.362E
SS3	52°51'.191N	0°15'.685E
	52°51'.162N	0°15'.649E
	52°51'.183N	0°15'.482E
	52°51'.213N	0°15'.507E
SS4	52°50'.819N	0°16'.150E
	52°50'.772N	0°16'.114E
	52°50'.728N	0°16'.236E
	52°50'.794N	0°16'.303E
	52°50'.839N	0°16'.246E
SS5	52°50'.658N	0°16'.527E
	52°50'.595N	0°16'.444E
	52°50'.490N	0°16'.440E
	52°50'.486N	0°16'.540E
SS6	52°51'.601N	0°15'.037E
	52°51'.611N	0°15'.136E
	52°51'.659N	0°15'.020E
	52°51'.660N	0°15'.108E
SS7	52°50'.386N	0°17'.100E
	52°50'.614N	0°17'.153E
	52°50'.518N	0°16'.988E
	52°50'.430N	0°17'.340E
SS8	52°50'.330N	0°17'.498E
	52°50'.430N	0°17'.340E
	52°50'.614N	0°17'.153E
	52°50'.518N	0°16'.988E
	52°50'.595N	0°16'.884E
	52°50'.714N	0°17'.126E
	52°50'.644N	0°17'.226E
	52°50'.364N	0°17'.558E

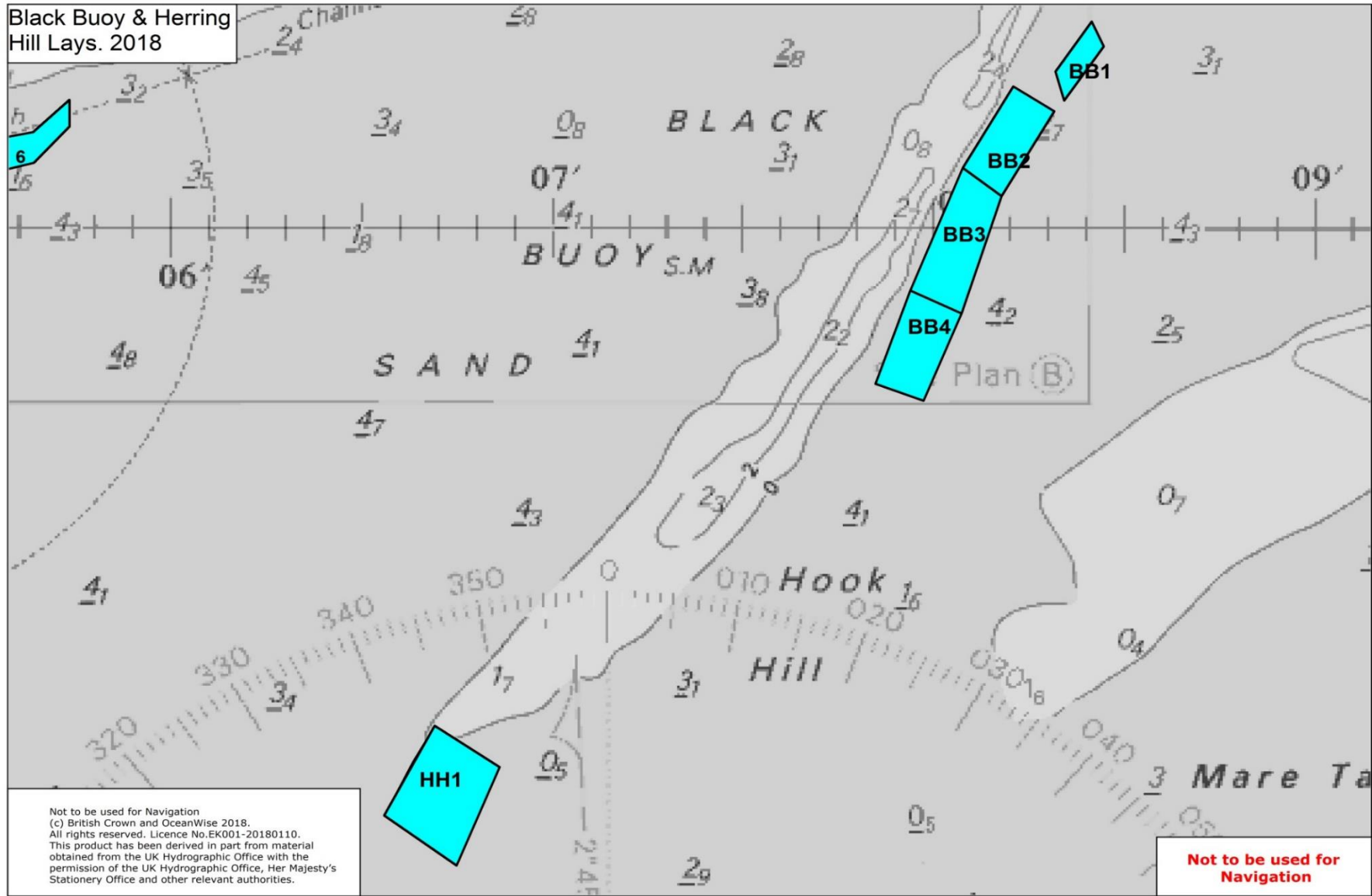
## Pandora

	<b>Latitude</b>	<b>Longitude</b>
P2	52 51'.936 N	00 21'.755 E
	52 51'.924 N	00 21'.810 E
	52 51'.994 N	00 21'.839 E
	52 51'.974 N	00 21'.883 E
P6	52 51'.860 N	00 21'.573 E
	52 51'.808 N	00 21'.651 E
	52 51'.724 N	00 21'.557 E
	52 51'.576 N	00 21'.481 E
	52 51'.600 N	00 21'.385 E
	52 51'.726 N	00 21'.473 E
P7	52 51'.476 N	00 21'.377 E
	52 51'.471 N	00 21'.460 E
	52 51'.576 N	00 21'.481 E
	52 51'.600 N	00 21'.385 E

## Wrangle

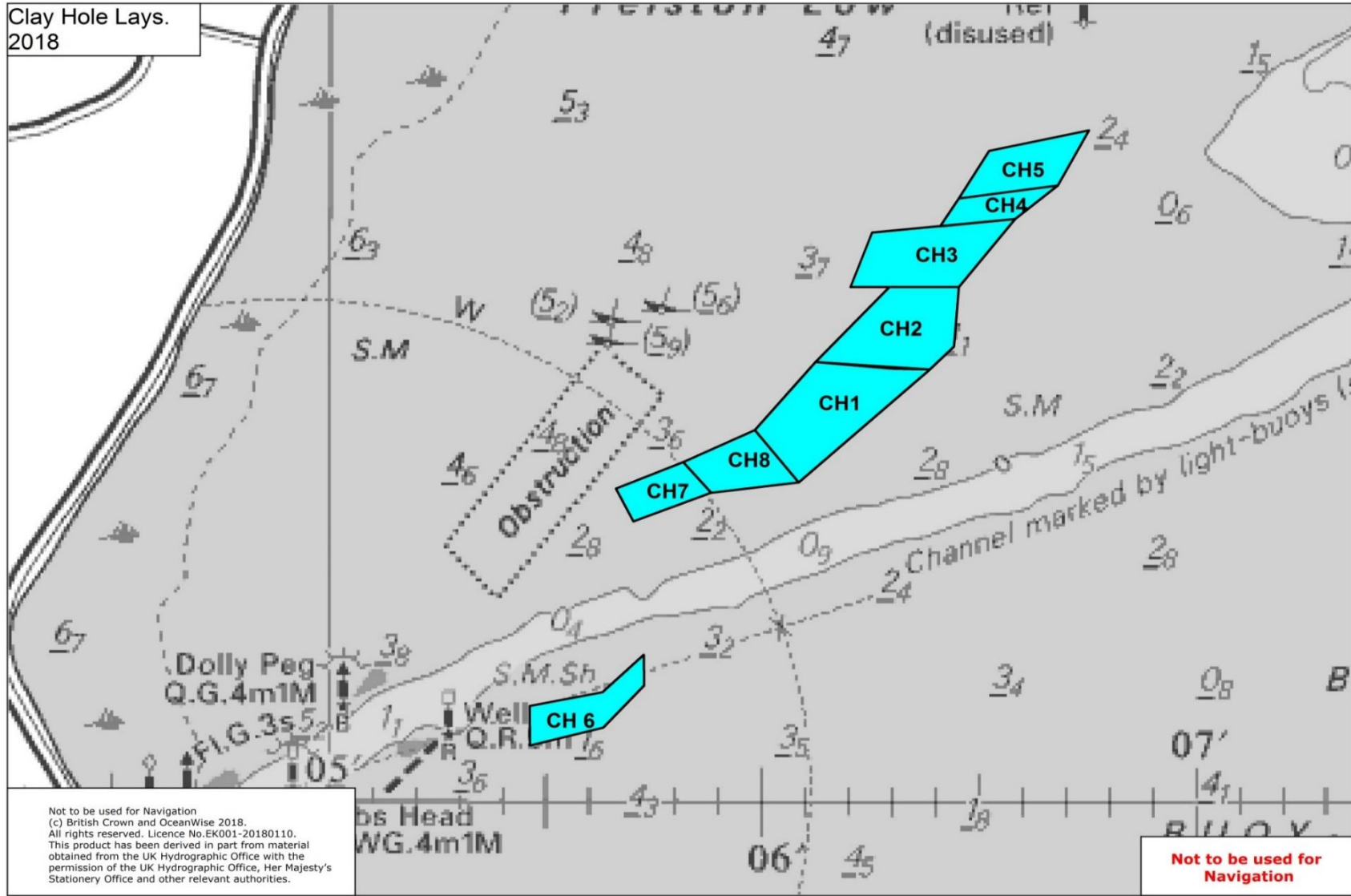
<b>Site No.</b>	<b>Latitude</b>	<b>Longitude</b>
W 1	53 00'.264N	00 12'.100E
	53 00'.262N	00 12'.266E
	52 00'.989N	00 12'.097E
	52 00'.979N	00 12'.194E
W 2	53 00'.262N	00 12'.266E
	53 00'.263N	00 12'.427E
	53 00'.067N	00 12'.373E
	52 59'.971N	00 12'.268E
	52 59'.979N	00 12'.194E

Black Buoy & Herring Hill Lays. 2018



WFO Lays Chart 1 - showing the area of Black Buoy and Herring Hill sands and private lays

Clay Hole Lays.  
2018

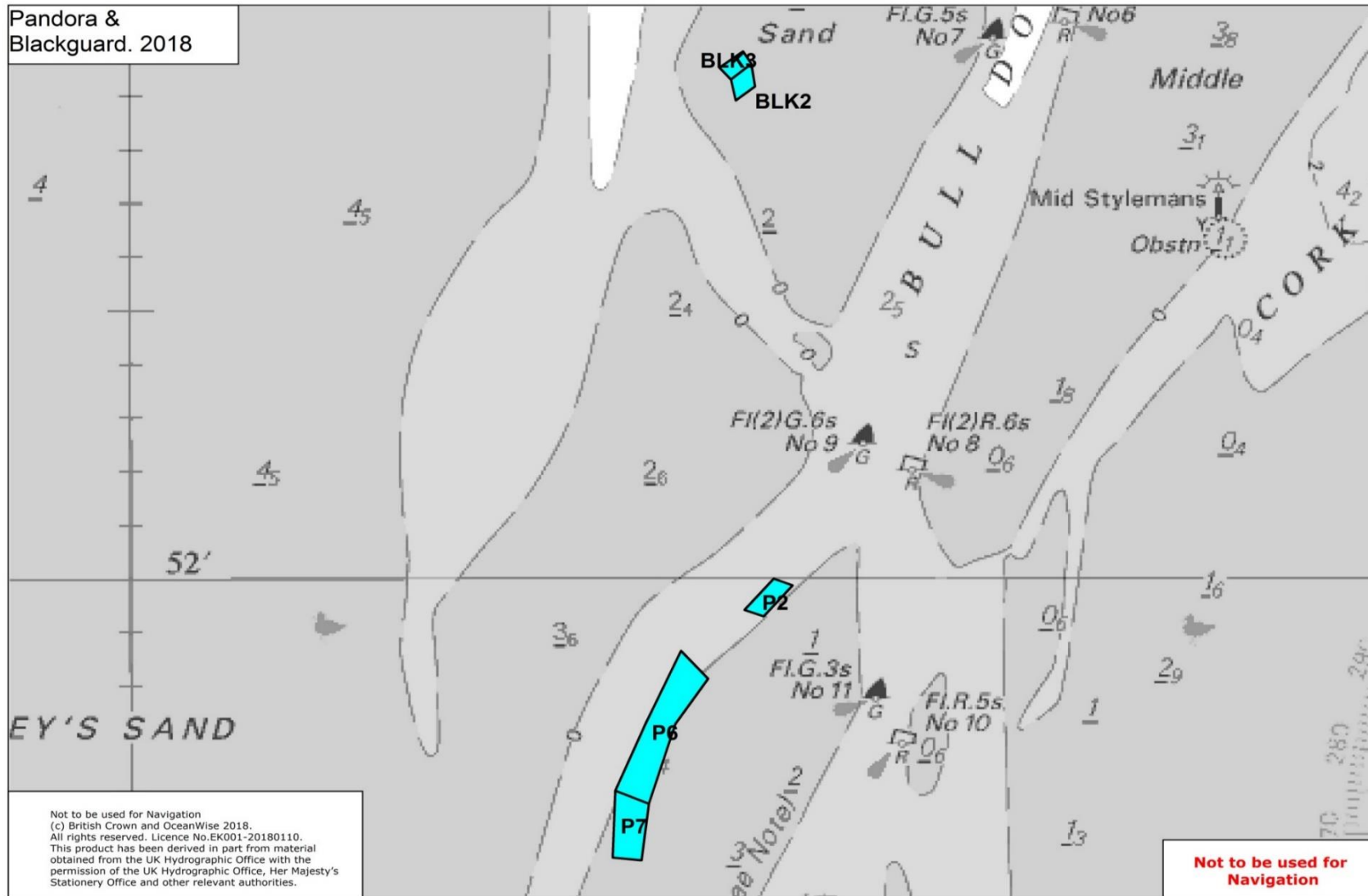


Not to be used for Navigation  
(c) British Crown and OceanWise 2018.  
All rights reserved. Licence No.EK001-20180110.  
This product has been derived in part from material  
obtained from the UK Hydrographic Office with the  
permission of the UK Hydrographic Office, Her Majesty's  
Stationary Office and other relevant authorities.

Not to be used for  
Navigation

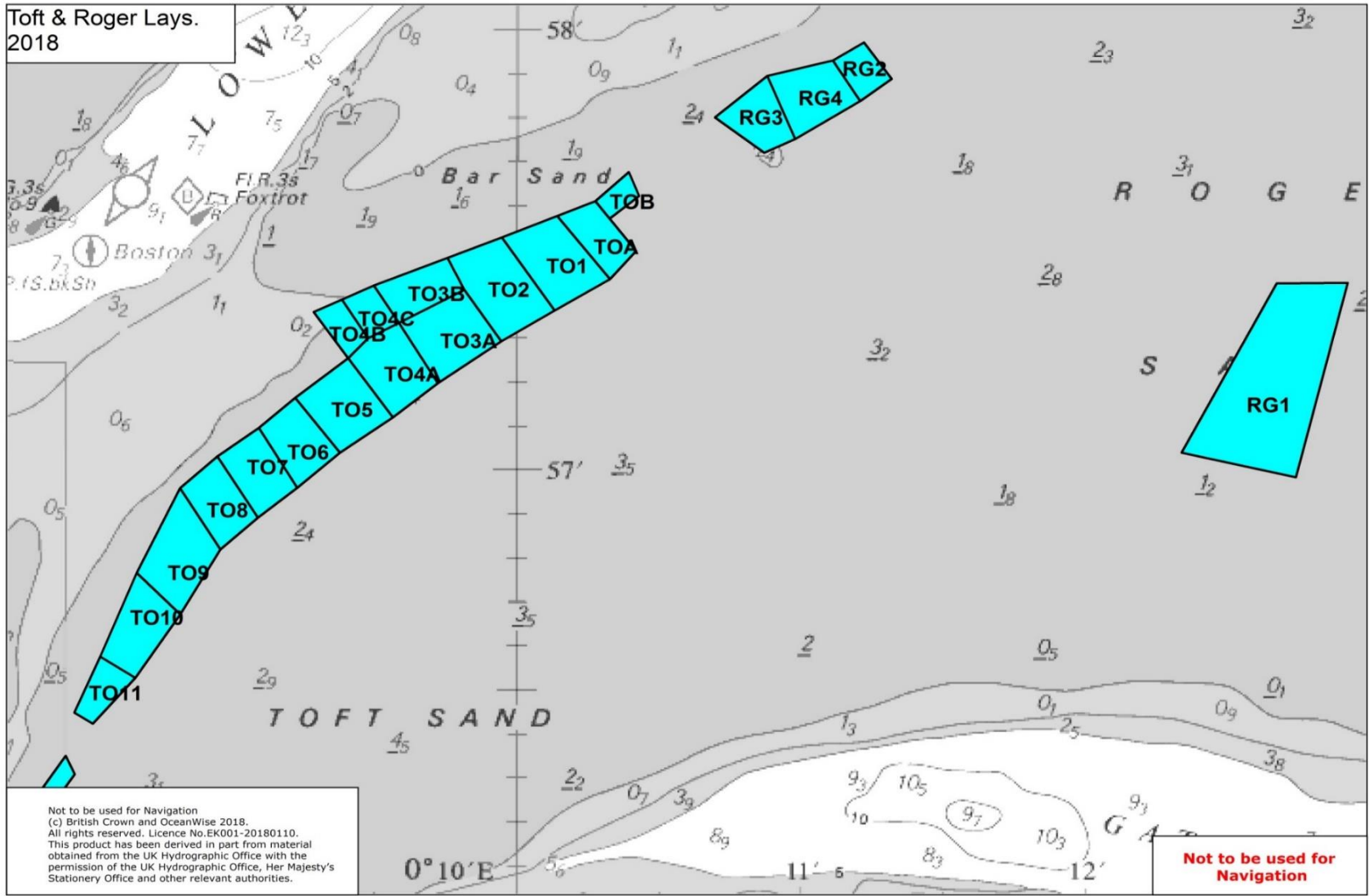
WFO Lays Chart 2 - showing the area of Clay Hole and private lays

Pandora &  
Blackguard. 2018



WFO Lays Chart 3 - showing the area of Pandora and Blackguard sands and private lays

Toft & Roger Lays.  
2018



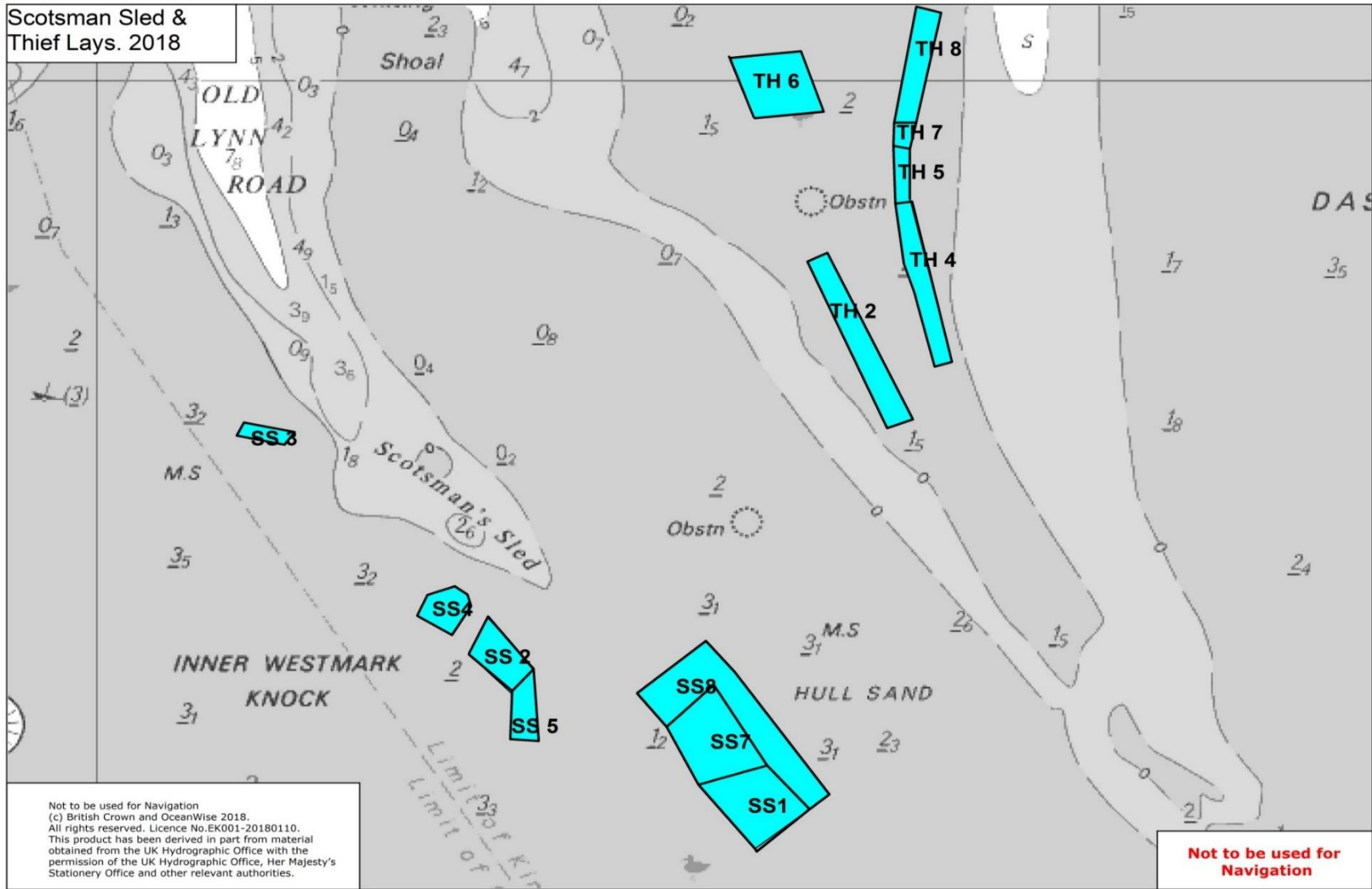
Not to be used for Navigation  
(c) British Crown and OceanWise 2018.  
All rights reserved. Licence No.EK001-20180110.  
This product has been derived in part from material  
obtained from the UK Hydrographic Office with the  
permission of the UK Hydrographic Office, Her Majesty's  
Stationary Office and other relevant authorities.

Not to be used for  
Navigation

WFO Lays Chart 4 - showing the area of Toft and Roger sands and private lays



Scotsman Sled & Thief Lays. 2018



WFO Lays Chart 5 - showing the area of Scotsman Sled and Thief sands and private lays

### **Schedule 4 – Operating times (updated 10 July 2023)**

The following tables set out the Days of Operation for the cockle fishery as referred to in Exemption Condition 6 (Days of Operation).

	White rows are open periods
	Blue rows are closed periods

#### **July**

<b>Date</b>	<b>Day</b>	<b>High Water</b>	<b>Height</b>	<b>High Water</b>	<b>Height</b>	<b>Open/Close</b>
1	S	0515 hrs	6.33	1730 hrs	6.51	
2	S	0607 hrs	6.69	1827 hrs	6.83	
3	M	0655 hrs	7.01	1922 hrs	7.11	Open at 0445 hrs
4	T	0741 hrs	7.29	2014 hrs	7.32	
5	W	0626 hrs	7.50	2105 hrs	7.40	
6	TH	0911 hrs	7.61	2156 hrs	7.33	
7	F	0957 hrs	7.62	2248 hrs	7.12	
8	S	1043 hrs	7.49	2341 hrs	6.80	Close at 0145 hrs
9	S	1131 hrs	7.26	****	***	Open at 0930 hrs
10	M	0038 hrs	6.45	1224 hrs	6.94	
11	T	0136 hrs	6.14	1327 hrs	6.58	Close at 1530 hrs
12	W	0239 hrs	5.95	1436 hrs	6.29	
13	TH	0340 hrs	5.90	1549 hrs	6.13	
14	F	0441 hrs	6.01	1658 hrs	6.15	
15	S	0535 hrs	6.24	1758 hrs	6.28	
16	S	0621 hrs	6.50	1848 hrs	6.43	Open at 0415 hrs
17	M	0701 hrs	6.74	1931 hrs	6.56	
18	T	0738 hrs	6.92	2010 hrs	6.63	
19	W	0813 hrs	7.03	2045 hrs	6.64	
20	TH	0647 hrs	7.08	2119 hrs	6.61	
21	F	0920 hrs	7.07	2151 hrs	6.54	
22	S	0953 hrs	7.00	2224 hrs	6.41	Close at 0000 hrs
23	S	1026 hrs	6.84	2259 hrs	6.22	
24	M	1100 hrs	6.61	2336 hrs	5.99	
25	T	1138 hrs	6.34	****	***	
26	W	0019 hrs	5.76	1223 hrs	6.06	
27	TH	0113 hrs	5.58	1324 hrs	5.82	
28	F	0223 hrs	5.55	1442 hrs	5.75	
29	S	0337 hrs	5.73	1601 hrs	5.94	
30	S	0448 hrs	6.11	1717 hrs	6.33	Open at 0245 hrs
31	M	0549 hrs	6.59	1823 hrs	6.81	

## August

Date	Day	High Water	Height	High Water	Height	Open/Close
1	T	0642 hrs	7.07	1918 hrs	7.25	
2	W	0728 hrs	7.51	2008 hrs	7.55	
3	T	0612 hrs	7.66	2056 hrs	7.69	
4	F	0856 hrs	8.08	2142 hrs	7.64	Close at 2345 hrs
5	S	0939 hrs	8.12	2227 hrs	7.39	
6	S	1021 hrs	7.95	2310 hrs	7.00	Open at 0815 hrs
7	M	1106 hrs	7.58	2354 hrs	6.54	
8	T	1151 hrs	7.06	****	***	
9	W	0042 hrs	6.09	1247 hrs	6.44	Close at 1500 hrs
10	T	0143 hrs	5.71	1400 hrs	5.88	
11	F	0256 hrs	5.54	1529 hrs	5.61	
12	S	0413 hrs	5.65	1653 hrs	5.73	
13	S	0517 hrs	5.99	1754 hrs	6.05	
14	M	0606 hrs	6.38	1842 hrs	6.36	Open 0400 hrs
15	T	0645 hrs	6.73	1920 hrs	6.59	
16	W	0721 hrs	6.99	1954 hrs	6.74	
17	T	0754 hrs	7.19	2024 hrs	6.83	
18	F	0825 hrs	7.32	2054 hrs	6.88	Close at 2300 hrs
19	S	0856 hrs	7.37	2124 hrs	6.87	
20	S	0927 hrs	7.32	2154 hrs	6.78	Open at 0715 hrs
21	M	0957 hrs	7.15	2224 hrs	6.60	
22	T	1026 hrs	6.90	2255 hrs	6.35	
23	W	1058 hrs	6.59	2331 hrs	6.06	
24	T	1139 hrs	6.22	****	***	
25	F	0019 hrs	5.74	1239 hrs	5.81	Close at 0230 hrs
26	S	0130 hrs	5.50	1409 hrs	5.56	
27	S	0304 hrs	5.56	1552 hrs	5.78	
28	M	0429 hrs	6.00	1716 hrs	6.35	Open at 0215 hrs
29	T	0530 hrs	6.64	1818 hrs	6.98	
30	W	0626 hrs	7.27	1909 hrs	7.47	
31	T	0711 hrs	7.81	1954 hrs	7.78	

## September

Date	Day	High Water	Height	High Water	Height	Open/Close
1	F	0753 hrs	8.22	2037 hrs	7.88	Close at 2245 hrs
2	S	0834 hrs	8.43	2117 hrs	7.79	
3	S	0915 hrs	8.40	2155 hrs	7.51	Open at 0715 hrs
4	M	0955 hrs	8.11	2232 hrs	7.11	
5	T	1036 hrs	7.58	2309 hrs	6.62	
6	W	1119 hrs	6.89	2349 hrs	6.11	
7	T	****	***	1212 hrs	6.12	Close at 1415 hrs
8	F	0043 hrs	5.62	1330 hrs	5.45	
9	S	0206 hrs	5.29	1516 hrs	5.24	
10	S	0343 hrs	5.39	1644 hrs	5.55	
11	M	0456 hrs	5.83	1742 hrs	6.03	
12	T	0545 hrs	6.34	1824 hrs	6.43	Open at 0345 hrs
13	W	0623 hrs	6.76	1856 hrs	6.71	
14	T	0657 hrs	7.09	1928 hrs	6.90	
15	F	0728 hrs	7.33	1957 hrs	7.03	Close at 2200 hrs
16	S	0758 hrs	7.48	2024 hrs	7.12	
17	S	0828 hrs	7.53	2053 hrs	7.14	Open at 0615 hrs
18	M	0858 hrs	7.46	2121 hrs	7.06	
19	T	0927 hrs	7.28	2150 hrs	6.89	
20	W	0956 hrs	7.01	2219 hrs	6.62	
21	T	1029 hrs	6.65	2255 hrs	6.29	
22	F	1113 hrs	6.20	2344 hrs	5.88	Close at 0145 hrs
23	S	****	***	1220 hrs	5.70	
24	S	0058 hrs	5.53	1405 hrs	5.46	
25	M	0242 hrs	5.55	1554 hrs	5.85	
26	T	0412 hrs	6.09	1709 hrs	6.54	Open at 0200 hrs
27	W	0515 hrs	6.81	1805 hrs	7.17	
28	T	0605 hrs	7.48	1851 hrs	7.59	
29	F	0648 hrs	8.00	1933 hrs	7.82	Close at 2145 hrs
30	S	0729 hrs	8.34	2010 hrs	7.87	

## October

Date	Day	High Water	Height	High Water	Height	Open/Close
1	S	0809 hrs	8.47	2046 hrs	7.78	Open at 0600 hrs
2	M	0849 hrs	8.33	2121 hrs	7.53	
3	T	0930 hrs	7.93	2155 hrs	7.16	
4	W	1010 hrs	7.32	2230 hrs	6.71	
5	T	1054 hrs	6.58	2308 hrs	6.20	
6	F	1145 hrs	5.82	2357 hrs	5.67	Close at 0115 hrs
7	S	****	***	1304 hrs	5.20	
8	S	0113 hrs	5.24	1452 hrs	5.07	
9	M	0300 hrs	5.24	1616 hrs	5.44	
10	T	0420 hrs	5.67	1712 hrs	5.94	
11	W	0512 hrs	6.21	1753 hrs	6.38	Open at 0300 hrs
12	T	0551 hrs	6.68	1827 hrs	6.70	
13	F	0625 hrs	7.04	1856 hrs	6.95	Close at 2100 hrs
14	S	0657 hrs	7.29	1924 hrs	7.13	
15	S	0728 hrs	7.44	1953 hrs	7.24	Open at 0515 hrs
16	M	0759 hrs	7.48	2021 hrs	7.29	
17	T	0830 hrs	7.42	2051 hrs	7.23	
18	W	0901 hrs	7.26	2121 hrs	7.08	
19	T	0936 hrs	6.99	2154 hrs	6.81	
20	F	1016 hrs	6.61	2235 hrs	6.46	
21	S	1109 hrs	6.13	2329 hrs	6.04	Close at 0045 hrs
22	S	****	***	1224 hrs	5.70	
23	M	0044 hrs	5.73	1412 hrs	5.62	
24	T	0221 hrs	5.79	1543 hrs	6.06	
25	W	0345 hrs	6.30	1650 hrs	6.65	Open at 0145 hrs
26	T	0448 hrs	6.94	1742 hrs	7.14	
27	F	0537 hrs	7.50	1827 hrs	7.45	Close at 2030 hrs
28	S	0621 hrs	7.90	1905 hrs	7.62	
29	S	0603 hrs	8.12	1841 hrs	7.68	Open at 0400 hrs
30	M	0645 hrs	8.14	1916 hrs	7.63	
31	T	0727 hrs	7.93	1951 hrs	7.46	

## November

Date	Day	High Water	Height	High Water	Height	Open/Close
1	W	0809 hrs	7.51	2026 hrs	7.16	
2	T	0851 hrs	6.95	2100 hrs	6.77	
3	F	0934 hrs	6.32	2138 hrs	6.33	Close at 2345 hrs
4	S	1024 hrs	5.71	2223 hrs	5.85	
5	S	1131 hrs	5.22	2326 hrs	5.44	
6	M	****	***	1303 hrs	5.06	
7	T	0054 hrs	5.28	1424 hrs	5.27	
8	W	0220 hrs	5.51	1524 hrs	5.68	
9	T	0321 hrs	5.95	1609 hrs	6.10	
10	F	0406 hrs	6.39	1645 hrs	6.48	
11	S	0445 hrs	6.75	1718 hrs	6.79	
12	S	0521 hrs	7.03	1750 hrs	7.03	Open at 0315 hrs
13	M	0556 hrs	7.20	1821 hrs	7.21	
14	T	0631 hrs	7.29	1854 hrs	7.30	
15	W	0707 hrs	7.29	1927 hrs	7.30	
16	T	0746 hrs	7.19	2003 hrs	7.20	
17	F	0829 hrs	6.97	2042 hrs	6.99	Close at 2345 hrs
18	S	0918 hrs	6.64	2129 hrs	6.70	
19	S	1016 hrs	6.26	2224 hrs	6.39	
20	M	1129 hrs	5.95	2330 hrs	6.18	
21	T	****	***	1300 hrs	5.91	Open at 2345 hrs
22	W	0051 hrs	6.19	1417 hrs	6.16	
23	T	0209 hrs	6.48	1520 hrs	6.50	
24	F	0314 hrs	6.87	1613 hrs	6.81	Close at 1815 hrs
25	S	0408 hrs	7.21	1658 hrs	7.05	
26	S	0457 hrs	7.45	1738 hrs	7.22	Open at 0245 hrs
27	M	0542 hrs	7.56	1815 hrs	7.34	
28	T	0627 hrs	7.54	1851 hrs	7.38	
29	W	0712 hrs	7.37	1928 hrs	7.31	
30	T	0755 hrs	7.08	2004 hrs	7.12	Close at 2215 hrs

## December

Date	Day	High Water	Height	High Water	Height	Open/Close
1	F	0837 hrs	6.68	2040 hrs	6.85	
2	S	0918 hrs	6.26	2117 hrs	6.53	
3	S	1002 hrs	5.85	2157 hrs	6.20	
4	M	1051 hrs	5.50	2247 hrs	5.86	
5	T	1152 hrs	5.25	2347 hrs	5.60	
6	W	****	***	1303 hrs	5.20	
7	T	0100 hrs	5.53	1409 hrs	5.37	
8	F	0209 hrs	5.69	1505 hrs	5.68	
9	S	0307 hrs	5.97	1554 hrs	6.07	
10	S	0358 hrs	6.30	1636 hrs	6.44	Open at 0145 hrs
11	M	0445 hrs	6.60	1717 hrs	6.77	
12	T	0528 hrs	6.86	1755 hrs	7.03	
13	W	0612 hrs	7.05	1833 hrs	7,22	
14	T	0656 hrs	7.17	1912 hrs	7.34	
15	F	0742 hrs	7.20	1954 hrs	7.37	Close at 2200 hrs
16	S	0830 hrs	7.11	2038 hrs	7.31	
17	S	0921 hrs	6.90	2124 hrs	7.16	
18	M	1015 hrs	6.61	2215 hrs	6.97	Open at 0815 hrs
19	T	1116 hrs	6.31	2310 hrs	6.76	
20	W	****	***	1228 hrs	6.10	
21	T	0015 hrs	6.58	1338 hrs	6.04	Close at 1545 hrs
22	F	0127 hrs	6.51	1441 hrs	6.11	
23	S	0237 hrs	6.55	1539 hrs	6.28	
24	S	0342 hrs	6.64	1631 hrs	6.51	
25	M	0440 hrs	6.77	1716 hrs	6.74	Open at 0230 hrs
26	T	0533 hrs	6.87	1757 hrs	6.95	
27	W	0521 hrs	6.93	1836 hrs	7.10	
28	T	0704 hrs	6.91	1913 hrs	7.15	Close at 2115 hrs
29	F	0745 hrs	6.80	1949 hrs	7.12	
30	S	0824 hrs	6.62	2024 hrs	7.01	
31	S	0900 hrs	6.41	2058 hrs	6.85	