

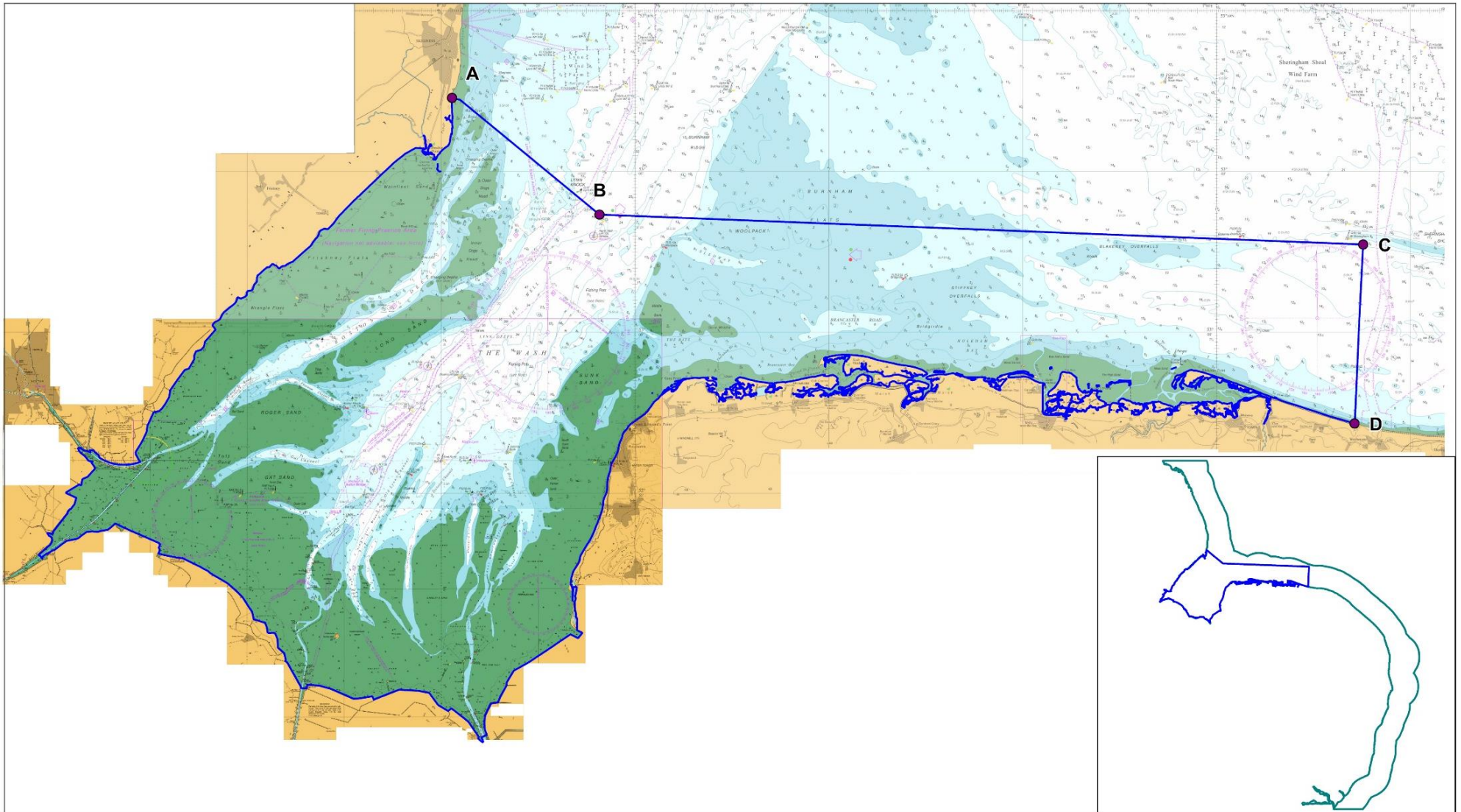
Schedule 2 of the Shrimp Permit Byelaw 2018

The Wash and North Norfolk Coast Special Area of Conservation

The following table sets out the co-ordinates of The Wash and North Norfolk Coast Special Area of Conservation as referred to in paragraph 1(t) of the byelaw.

The Wash and North Norfolk Coast Special Area of Conservation is defined by a boundary drawn by the series of straight lines connecting points A to D and a line connecting point D to A which follows the land boundary which is to be taken as mean high water springs.

Point	Latitude	Longitude
A	53° 07.29' N	00° 20.55' E
B	53° 03.66' N	00° 28.16' E
C	53° 02.73' N	01° 07.55' E
D	52° 57.16' N	01° 07.10' E



The Wash and North Norfolk Coast SAC

- Eastern IFCA - district boundary
- The Wash and North Norfolk Coast Coast SAC boundary
- Co-ordinate points

Not to be used for navigation – for illustrative purposes only

Contains public sector information licensed under the Open Government Licence v1.0 (c) British Crown and OceanWise 2019. All rights reserved. Licence No.EK001-20180110. This product has been derived in part from material obtained from the UK Hydrographic Office with the permission of the UK Hydrographic Office, Her Majesty's Stationary Office and other relevant authorities.

Date:02/09/2019
 Drawn by:SC
 Projection: Lat Long WSG84
 EMS boundary:JNCC download -
 UK_SACs_withMarineComponents_2103821

2019_09_Adm_WNNC_Layout_Shrimp_permit_Byelaw.WOR