

Eastern Inshore Fisheries and Conservation Authority

Local Notice to Mariners EIFCA 09-2023

Issued – 27th September, 2023

East Coast of England – North Norfolk Coast

As part of **Adaptive Risk Management** in Cromer Shoal Chalk Beds MCZ, three areas inshore of the MCZ and between Sheringham and Cromer are **voluntarily closed to commercial and recreational potting**. The areas are closed as part of a study which will compare the effects of natural disturbance with those from potting activities on sensitive rugged chalk features within the MCZ. These areas are **now closed** and will remain so until the completion of the study in **November 2026**.

Table 1. Coordinates of Closed Areas

Closed Area	Corner	Latitude	Longitude
Sheringham	SH1	52°57.031 'N	1°13.070 'E
	SH2	52°57.017 'N	1°13.274 'E
	SH3	52°56.894 'N	1°13.250 'E
	SH4	52°56.908 'N	1°13.046 'E
West Runton	WR1	52°56.887 'N	1°14.558 'E
	WR2	52°56.868 'N	1°14.761 'E
	WR3	52°56.746 'N	1°14.731 'E
	WR4	52°56.764 'N	1°14.528 'E
East Runton	ER1	52°56.530 'N	1°16.713 'E
	ER2	52°56.501 'N	1°16.913 'E
	ER3	52°56.380 'N	1°16.865 'E
	ER4	52°56.409 'N	1°16.665 'E

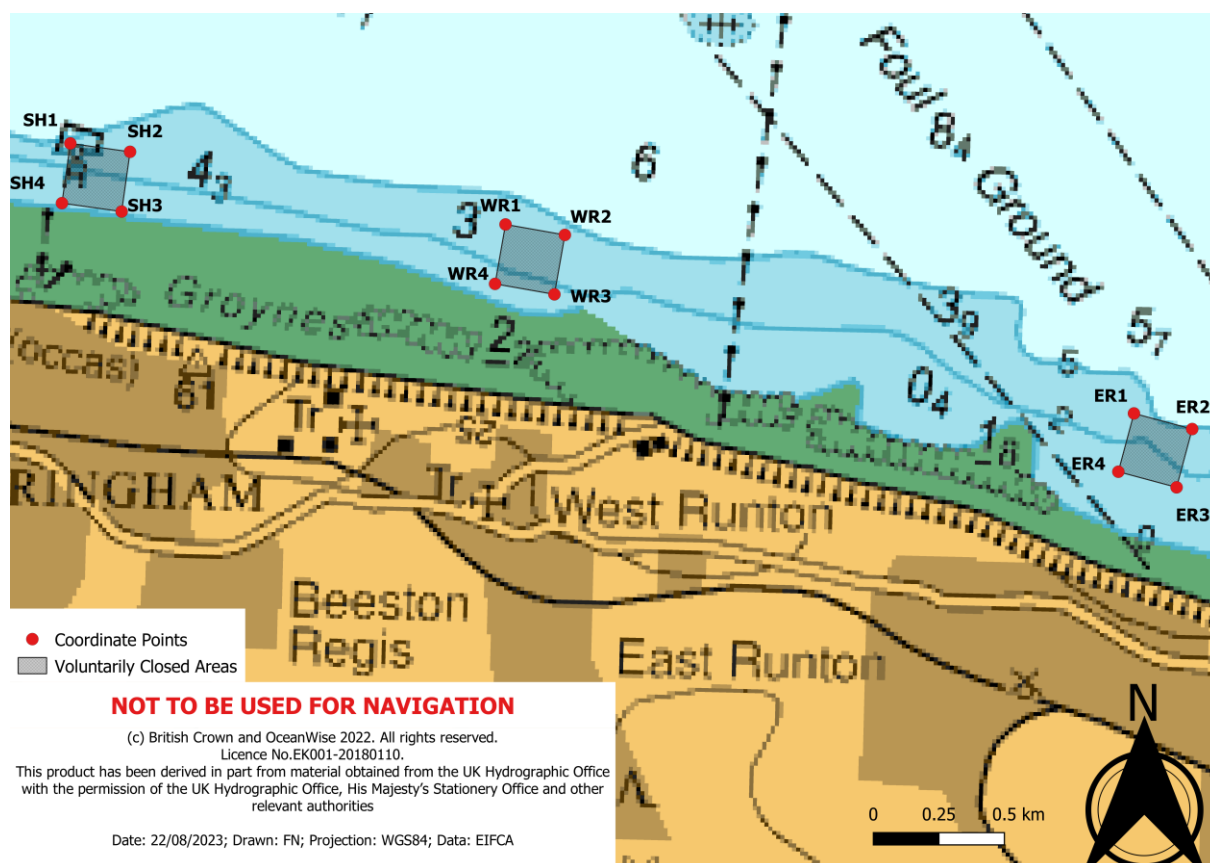


Figure 1. The location of the corners of the voluntarily closed areas. The coordinates in Table 1 relate to the red points in the chart.

The northern corners of these areas will be marked with special marker buoys within the coming months. Until this point, the only visual markers available will be landmarks on shore. More information about these areas and landmarks which can be used to provide a visual marker can be found on our website: <https://www.eastern-ifca.gov.uk/cromer-shoal-chalk-beds-mcz/cromer-shoal-chalk-beds-mcz-natural-disturbance-study/>.

The areas will be closed until **1st November 2026**. If you have potting gear in the area, please remove it as soon as safe to do so and ensure the area remains clear of gear until November 2026.

Further information about the project and the closed areas is available on our website (see link above).

If you require more information regarding Eastern IFCA planned surveys please contact our office:-

mail@eastern-ifca.gov.uk

01553 775321

Thank you for your cooperation.

Jon Butler
 Operations Manager