

## Eastern Inshore Fisheries and Conservation Authority

### Local Notice to Mariners EIFCA 10 - 2023

Issued – 13<sup>th</sup> December 2023

### East Coast of England – North Norfolk Coast

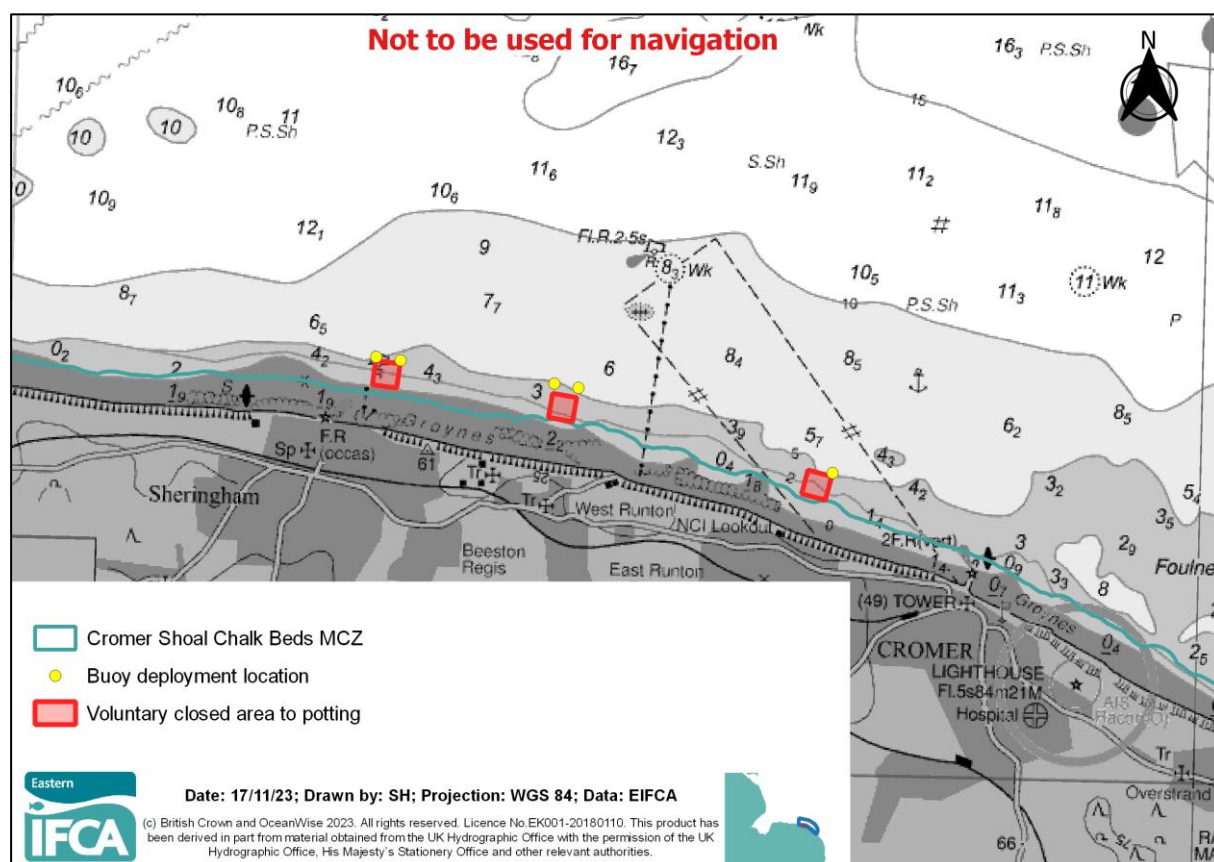
Marker buoys will be deployed to demark the northern corners of three areas voluntarily closed to potting between Sheringham and Cromer along the North Norfolk coast (see previous LNTM 09-2023). Subject to suitable weather, works will commence from the **1<sup>st</sup> January 2024** to deploy five buoys (Table 1). Further notice will be provided for the deployment of the remaining westerly buoy at East Runton.

Works will be completed by Wells Harbour Commission using the vessel Frank T. The vessel can be contacted on channel 16.

We request that all fishing gear is removed within a 50m radius of each deployment position (Figure 1) prior to the date of deployment specified in Table 1. This is to ensure that no gear is damaged during deployment. If you are unable to move any fishing gear from these areas before this date, please contact us to let us know as soon as possible. Once buoys have been deployed a subsequent Local Notice to Mariners will be issued.

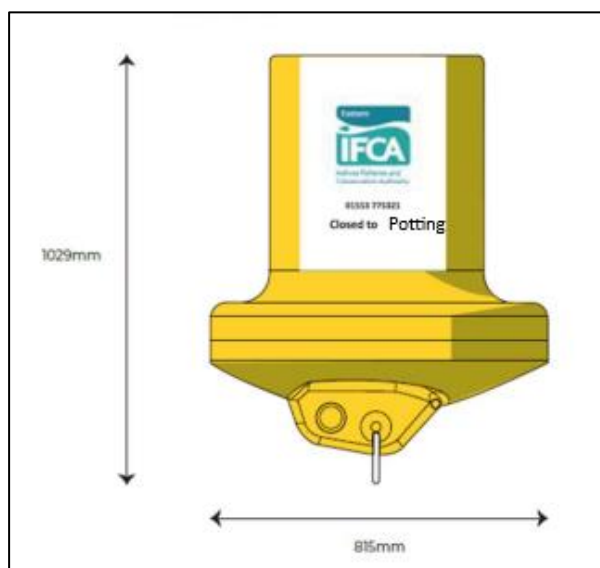
**Table 1:** Buoy deployment positions and date works will commence.

Buoy location	WGS 84		Commencement of works
	Latitude	Longitude	
Sheringham - West Buoy	52° 57'.049 N	01° 13'.073 E	1 <sup>st</sup> January 2024
Sheringham - East Buoy	52° 57'.035 N'	01° 13'.277 E	1 <sup>st</sup> January 2024
West Runton – West Buoy	52° 56'.936 N	01° 14'.571 E	1 <sup>st</sup> January 2024
West Runton – East Buoy	52° 56'.918 N	01° 14'.774 E	1 <sup>st</sup> January 2024
East Runton – West Buoy	To be confirmed		
East Runton – East Buoy	52° 56'.518N	01° 16'.920 E	1 <sup>st</sup> January 2024



**Figure 1** Positions of voluntarily closed areas within Cromer Shoal Chalk Bed MCZ. Showing positions of special marker buoys marking northern corners.

These buoys will be yellow marker buoys, with radar reflectors and a light showing a pattern of Fl (5) Y 20s. The buoys will be 0.8m wide and roughly 1m tall out of the water. They will display the Eastern IFCA logo and telephone number along with a message stating “AREA CLOSED TO POTTING”. See figure 2 for a model image of the buoy.



**Figure 2** Model image of the buoys to be used to mark the northern edge of the voluntarily closed areas.

Works to install the buoys will commence from 1<sup>st</sup> January 2024 and the buoys shall remain in place until the end of November 2026, for the duration of the voluntary closure.

Further information about the project and the closed areas is available on our website:  
<https://www.eastern-ifca.gov.uk/cromer-shoal-chalk-beds-mcz/cromer-shoal-chalk-beds-mcz-natural-disturbance-study/>.

If you require more information regarding Eastern IFCA planned surveys or works, please contact our office:

[mail@eastern-ifca.gov.uk](mailto:mail@eastern-ifca.gov.uk)

01553 775321

Sincerely

Jon Butler  
Operations Manager