

Eastern IFCA Consultation: Cromer Shoal Chalk Bed Byelaw: Phase 1 Permit Conditions



Permit conditions are being developed to manage potting activity within the Cromer Shoal Chalk Beds Marine Conservation Zone. These proposals are intended to come into effect when the byelaw is confirmed.



This consultation closes
29 February 2024

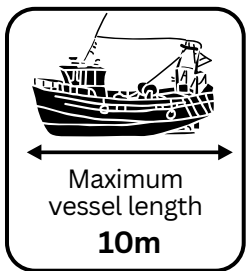


We would like feedback on proposed management measures relating to the potential fishery.

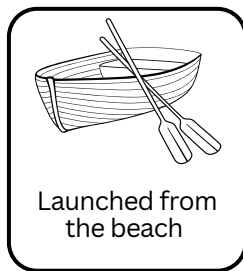
Inshore potting vessel restriction



Vessels are prohibited from fishing with pots **within 3 nautical miles** of the shore within the MCZ **unless:**



Or



Winter closure on rugged chalk



Charts of the MCZ showing the **3 nautical miles boundary** and **rugged chalk management area** are overleaf

Any pots set within the **rugged chalk** must be **removed before 1 January** each year

Fishing using **pots** within the rugged chalk is **prohibited** during **January and February**

More information on why we have proposed these measures and how they will reduce risk to the rugged chalk is available on our website - www.eastern-ifca.gov.uk

We would like to know... ?

- Do you think the measures will be effective at reducing the risk to rugged chalk?
- Will the measures have an impact on you?



Call 01553 775321



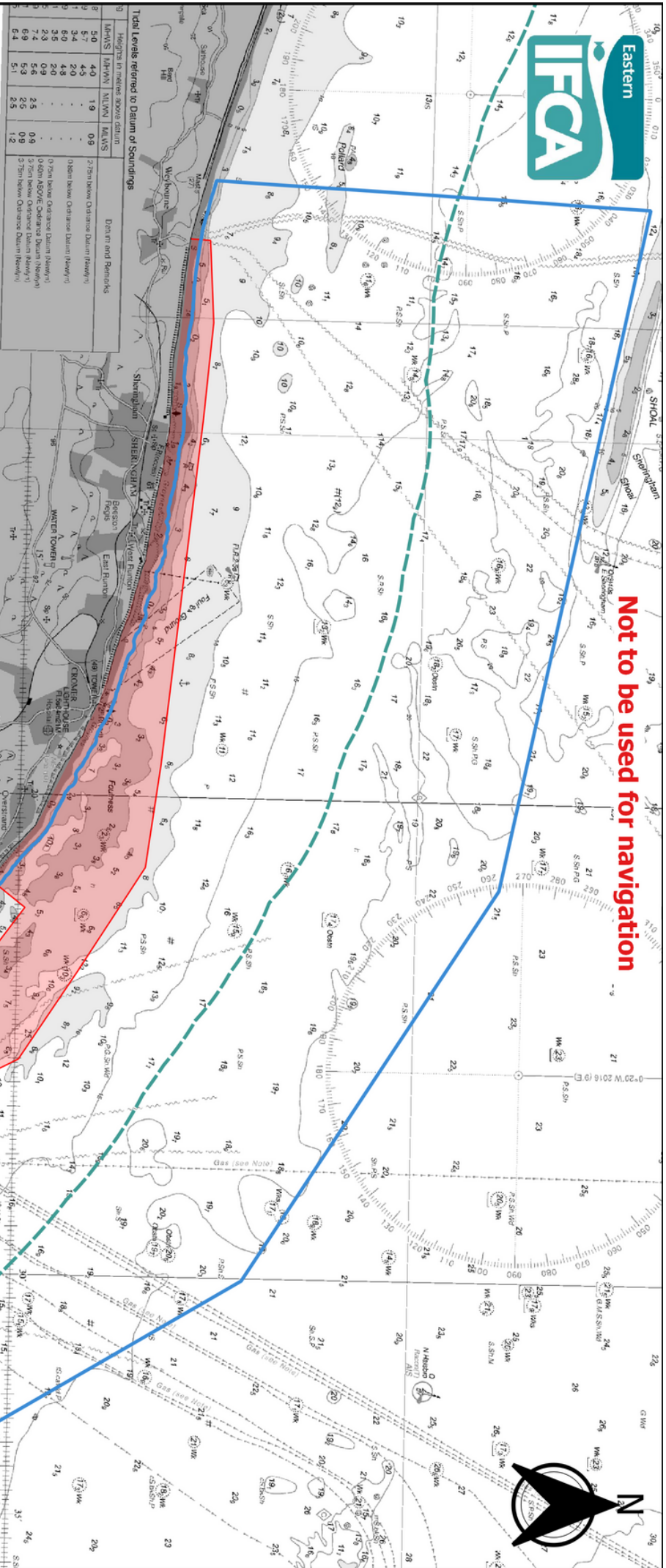
Email to mail@eastern-ifca.gov.uk



Write to us at Unit 6, North Lynn Business Village, Bergen Way, King's Lynn, PE30 2JG



Not to be used for navigation



Proposed rugged chalk potting winter closure

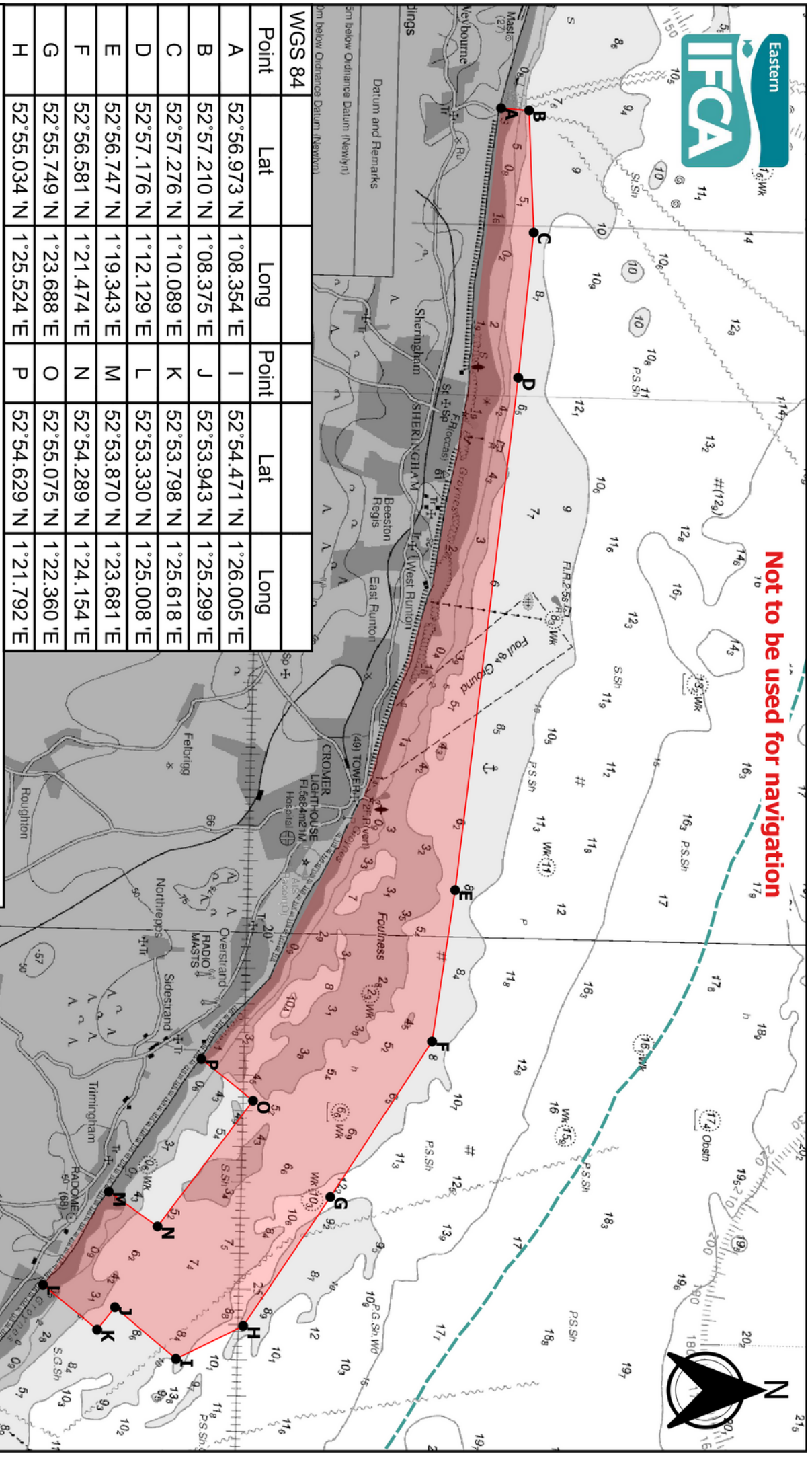
- Cromer Shoal Chalk Beds MCZ
- 3NM limit
- Proposed rugged chalk management area (potting winter closure)

Date: 19/12/23; Drawn by: SH; Projection: WGS 84; Data: EIFCA

(c) British Crown and Oceanwise 2023. All rights reserved. Licence No EKK01-20180110. This product has been derived in part from material obtained from the UK Hydrographic Office with the permission of the UK Hydrographic Office. His Majesty's Stationery Office and other relevant authorities.



Not to be used for navigation



Point	Lat	Long	Point	Lat	Long
A	52°56.973 'N	1°08.354 'E	I	52°54.471 'N	1°26.005 'E
B	52°57.210 'N	1°08.375 'E	J	52°53.943 'N	1°25.299 'E
C	52°57.276 'N	1°10.089 'E	K	52°53.798 'N	1°25.618 'E
D	52°57.176 'N	1°12.129 'E	L	52°53.330 'N	1°25.008 'E
E	52°56.747 'N	1°19.343 'E	M	52°53.870 'N	1°23.681 'E
F	52°56.581 'N	1°21.474 'E	N	52°54.289 'N	1°24.154 'E
G	52°55.749 'N	1°23.688 'E	O	52°55.075 'N	1°22.360 'E
H	52°55.034 'N	1°25.524 'E	P	52°54.629 'N	1°21.792 'E

Proposed rugged chalk potting winter closure

- 3NM limit
- Proposed rugged chalk management area (potting winter closure)

Date: 19/12/23; Drawn by: SH; Projection: WGS 84; Data: EIFCA

(c) British Crown and OceanVise 2023. All rights reserved. Licence No. EIK001-20180110. This product has been derived in part from material obtained from the UK Hydrographic Office with the permission of the UK Hydrographic Office. His Majesty's Stationery Office and other relevant authorities.

