

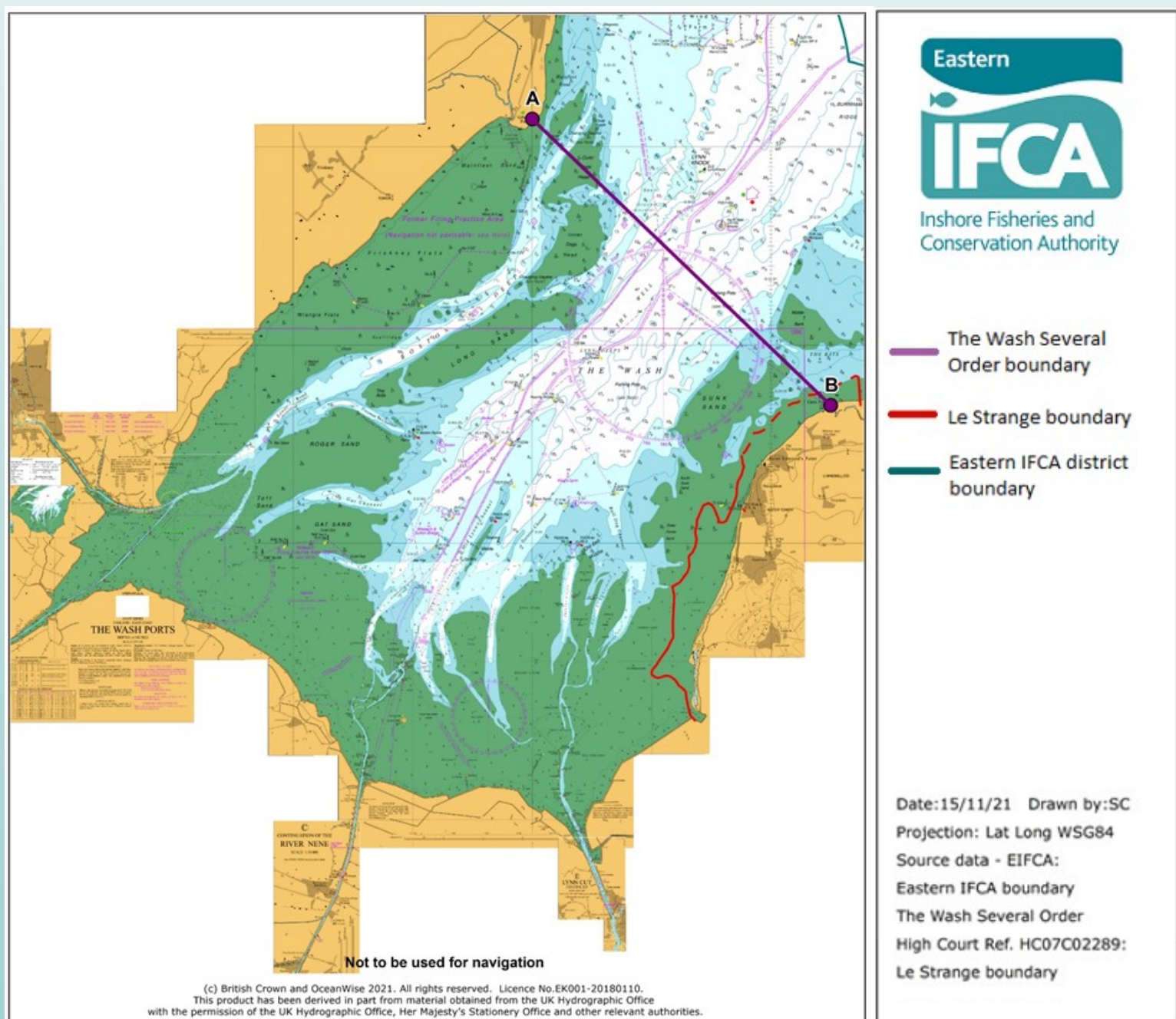


Inshore Fisheries and Conservation Authority

Temporary Closure: Wash Shellfish Fisheries

The shellfish fisheries of the Wash previously managed by the Wash Fishery Order 1992 and the Wash Restricted Area Byelaw will be temporarily closed under Byelaw 8 from 3 January 2024 until 3 January 2025. The fishery has been closed for the purposes of protection of the fishery, fishery management and control of exploitation.

No person shall, without the prior written authority of the Clerk of the Committee fish for, remove, take or disturb any shellfish from any fishery or part thereof that has been closed under this byelaw. This closure applies in the area illustrated on the chart below:



For further information please contact Eastern IFCA: **Seen something suspicious? Don't Ignore it. Report it.**

Eastern Inshore Fisheries and Conservation Authority **Call the police on 101 or report it online: gov.uk/report-border-crime.**

6 North Lynn Business Village
Bergen Way
King's Lynn
Norfolk PE30 2JG

To report something to Eastern IFCA out of office hours please call: 07748182025 or email: enforcement@eastern-ifca.gov.uk.

Phone No: (01553) 775321; **E-mail:** mail@eastern-ifca.gov.uk