

NOTICE TO MARINERS

Geotechnical Survey

Date of Issue: 8th November 2023 (Rev. 2)

Mariners are advised that EGS International Ltd (EGS) will be undertaking, on behalf of The Crown Estate, geotechnical survey operations in four distinct areas off the Eastern and Southern coast of England (Humber, East Coast, Thames Estuary and East English Channel).

Marine operations will be running from around the **11th November 2023**, with the completion of the work expected in late **January 2024** (weather dependant).

The survey works will be carried out within the areas shown in the maps at pre-selected locations detailed in the tables below.

Operations will be carried out by the vessel **EGS Ventus** (IMO 7506237; Call Sign V7I19).



EGS Ventus

Please, be advised that during the geotechnical sampling operations the vessels will have equipment deployed to the seabed restricting its ability to manoeuvre. Other vessels are requested to maintain an appropriate and safe distance of **at least 500m**.

During operations the vessels will display the appropriate day shapes/signals and lights as required by the IRPCS. A continuous listening watch will be maintained on VHF Channel 16 and DSC.

Any enquiries regarding this notice should be direct to:

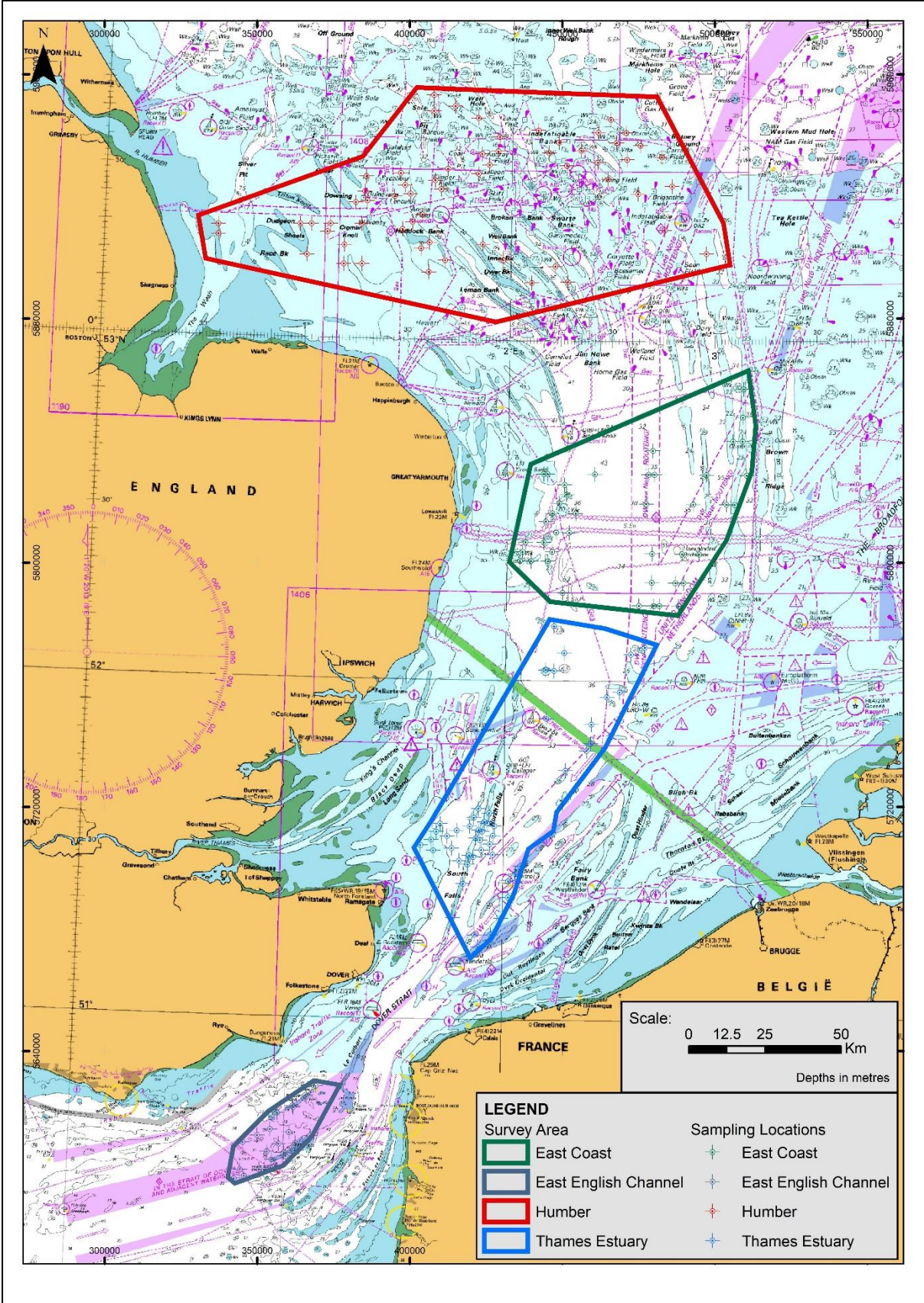
EGS Project Manager

Walter Colautti

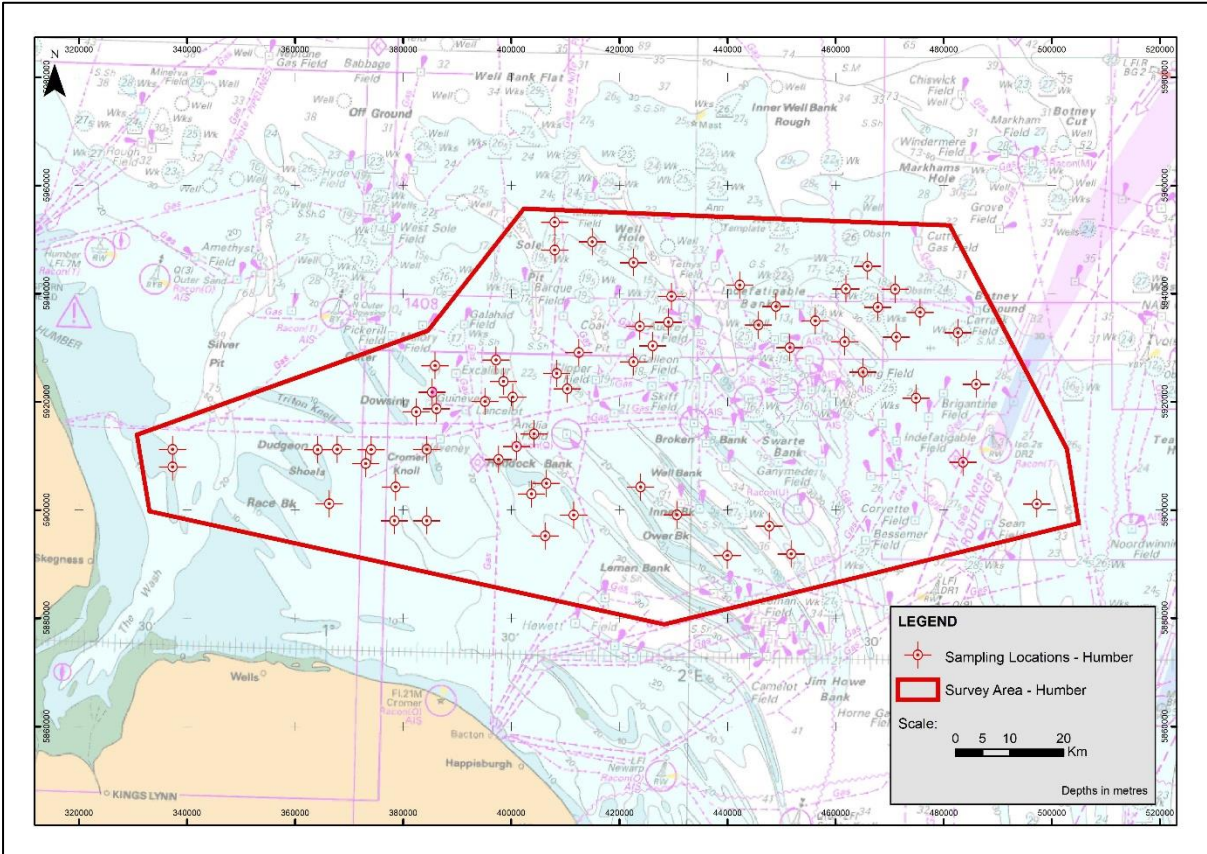
Email: wcolautti@egssurvey.co.uk

Office: +44 (0)1420 489329

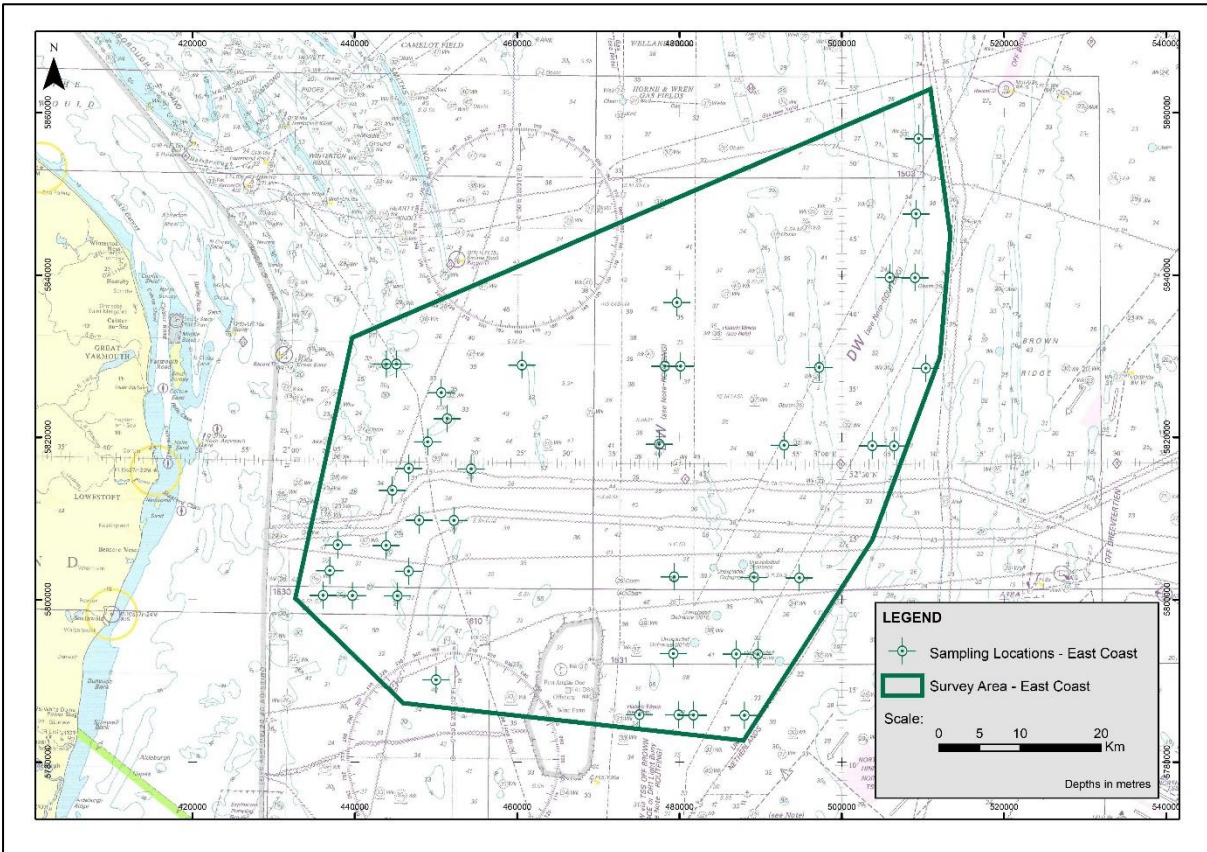
Mobile: +44 (0)7876 707454



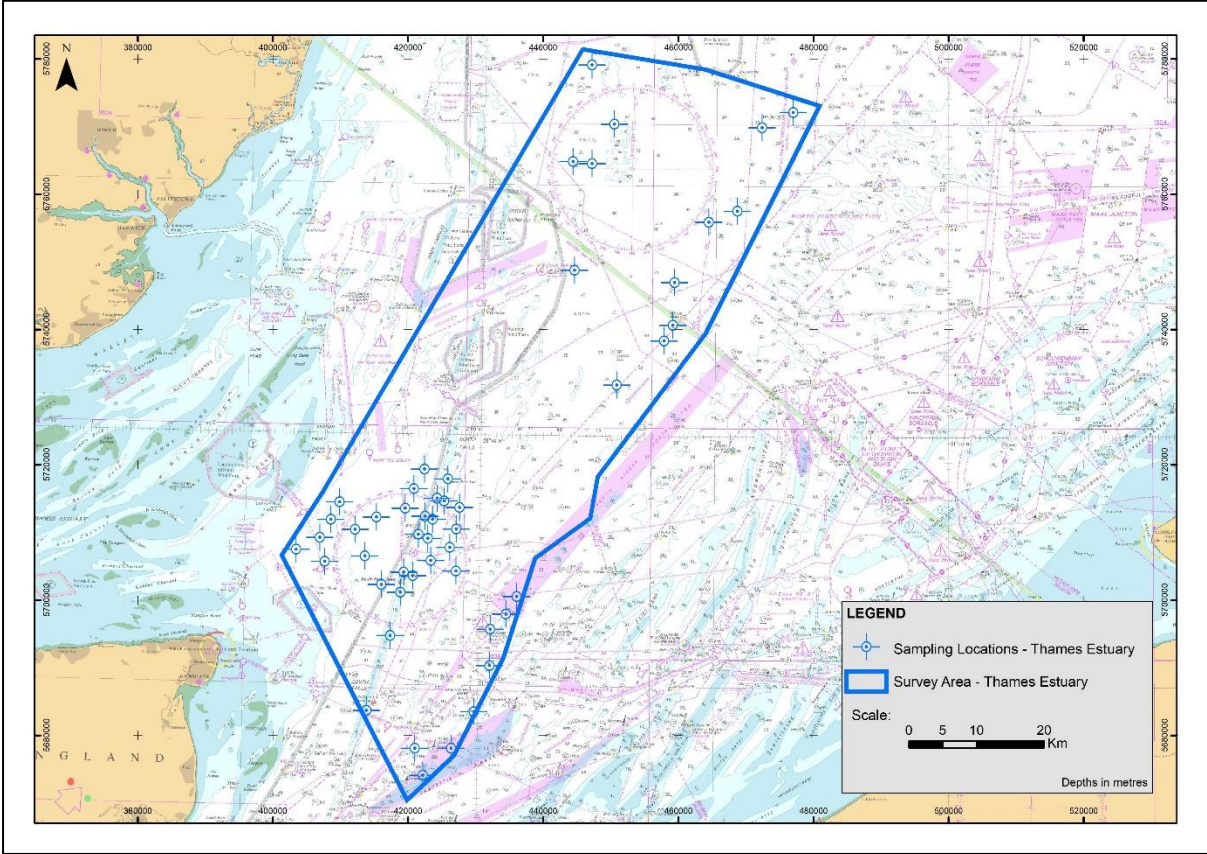
General Survey Target Areas Overview



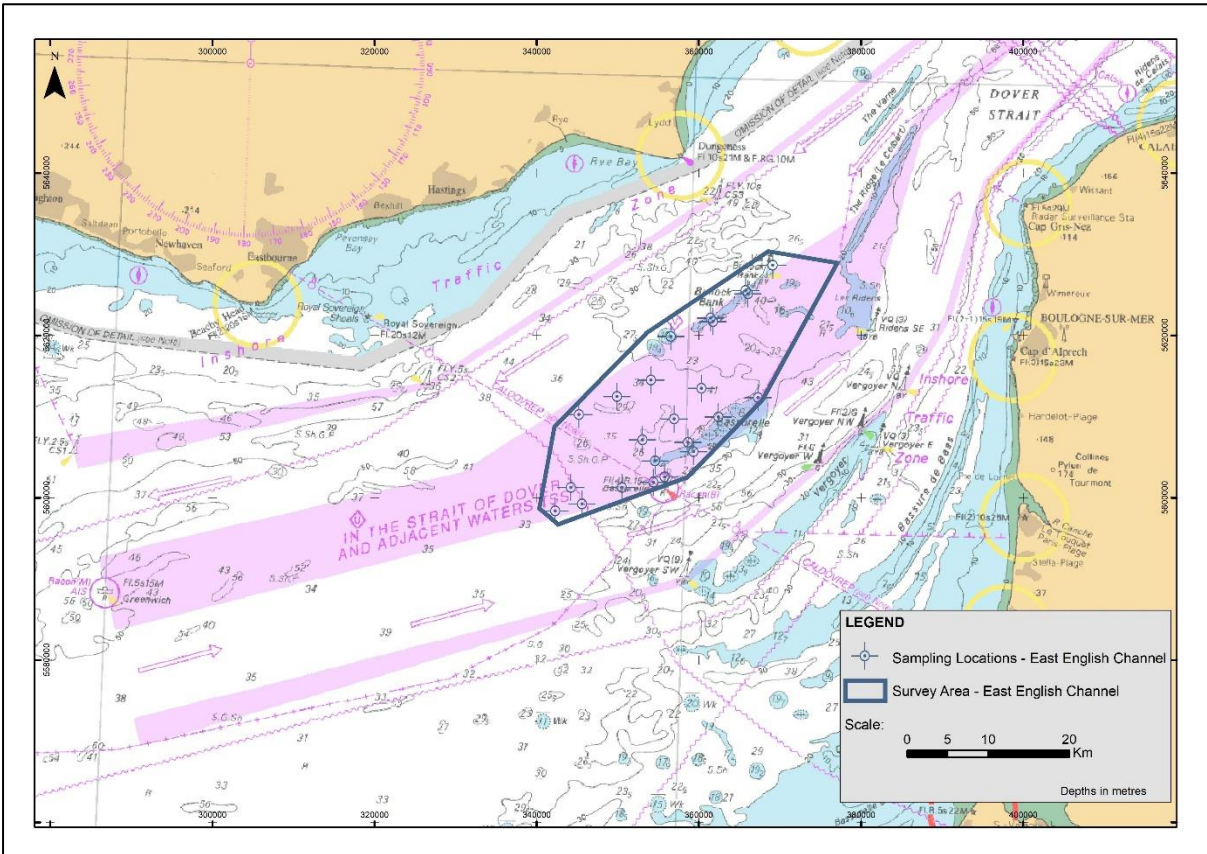
Humber Region Overview



East Coast Region Overview



Thames Estuary Region Overview



English Channel Region Overview

	Latitude	Longitude		Latitude	Longitude
1	53° 28.632' N	002° 28.402' E	32	53° 17.121' N	001° 35.834' E
2	53° 32.146' N	002° 33.963' E	33	53° 19.393' N	001° 27.806' E
3	53° 34.616' N	002° 37.886' E	34	53° 20.717' N	001° 30.747' E
4	53° 31.632' N	002° 25.313' E	35	53° 22.008' N	001° 33.634' E
5	53° 35.116' N	002° 30.829' E	36	53° 13.143' N	001° 16.098' E
6	53° 36.914' N	002° 33.675' E	37	53° 13.062' N	001° 10.686' E
7	53° 39.189' N	002° 29.055' E	38	53° 14.560' N	000° 59.813' E
8	53° 36.900' N	002° 25.432' E	39	53° 16.405' N	001° 10.794' E
9	53° 33.702' N	002° 20.383' E	40	53° 18.677' N	001° 05.724' E
10	53° 30.997' N	002° 16.123' E	41	53° 19.934' N	000° 57.614' E
11	53° 35.092' N	002° 13.756' E	42	53° 20.084' N	001° 06.560' E
12	53° 33.231' N	002° 10.836' E	43	53° 19.993' N	001° 00.903' E
13	53° 37.178' N	002° 07.623' E	44	53° 20.243' N	001° 15.804' E
14	53° 23.953' N	001° 13.870' E	45	53° 15.559' N	002° 57.500' E
15	53° 24.308' N	001° 17.251' E	46	53° 19.702' N	002° 45.193' E
16	53° 25.154' N	001° 25.301' E	47	53° 27.467' N	002° 47.330' E
17	53° 25.635' N	001° 29.946' E	48	53° 26.073' N	002° 37.290' E
18	53° 26.572' N	001° 39.040' E	49	53° 32.613' N	002° 44.239' E
19	53° 25.944' N	001° 16.490' E	50	53° 10.446' N	002° 16.721' E
20	53° 27.181' N	001° 28.328' E	51	53° 13.203' N	002° 13.040' E
21	53° 29.394' N	001° 49.993' E	52	53° 10.203' N	002° 06.119' E
22	53° 28.098' N	001° 37.219' E	53	53° 14.193' N	001° 57.647' E
23	53° 28.600' N	001° 16.832' E	54	53° 16.918' N	001° 51.540' E
24	53° 29.291' N	001° 27.005' E	55	53° 35.954' N	001° 56.184' E
25	53° 30.214' N	001° 40.865' E	56	53° 39.253' N	001° 49.710' E
26	53° 31.007' N	001° 53.201' E	57	53° 41.258' N	001° 42.750' E
27	53° 33.401' N	001° 55.738' E	58	53° 40.368' N	001° 36.475' E
28	53° 32.927' N	001° 50.988' E	59	53° 43.154' N	001° 36.383' E
29	53° 14.013' N	001° 40.493' E	60	53° 17.764' N	000° 33.567' E
30	53° 11.885' N	001° 35.796' E	61	53° 19.495' N	000° 33.468' E
31	53° 16.037' N	001° 33.416' E			

Humber Region Planned Sampling Locations

	Latitude	Longitude		Latitude	Longitude
1	52° 51.643' N	003° 08.459' E	22	52° 13.303' N	002° 49.478' E
2	52° 21.079' N	002° 03.735' E	23	52° 13.323' N	002° 43.968' E
3	52° 21.087' N	002° 06.920' E	24	52° 17.409' N	002° 41.756' E
4	52° 21.101' N	002° 11.802' E	25	52° 17.387' N	002° 48.582' E
5	52° 22.728' N	002° 04.424' E	26	52° 17.378' N	002° 50.934' E
6	52° 22.753' N	002° 12.985' E	27	52° 22.513' N	002° 41.826' E
7	52° 24.432' N	002° 05.261' E	28	52° 22.467' N	002° 55.398' E
8	52° 24.444' N	002° 10.503' E	29	52° 22.488' N	002° 50.474' E
9	52° 26.153' N	002° 14.072' E	30	52° 31.318' N	002° 40.122' E
10	52° 26.158' N	002° 17.849' E	31	52° 31.277' N	002° 53.737' E

11	52° 28.104' N	002° 11.104' E	32	52° 31.239' N	003° 03.320' E
12	52° 29.584' N	002° 12.871' E	33	52° 31.220' N	003° 05.717' E
13	52° 29.593' N	002° 19.662' E	34	52° 36.508' N	002° 40.695' E
14	52° 31.352' N	002° 14.899' E	35	52° 36.508' N	002° 42.430' E
15	52° 32.904' N	002° 17.001' E	36	52° 36.451' N	002° 57.535' E
16	52° 34.635' N	002° 16.336' E	37	52° 36.387' N	003° 09.180' E
17	52° 36.492' N	002° 10.311' E	38	52° 42.420' N	003° 05.261' E
18	52° 36.498' N	002° 11.400' E	39	52° 42.403' N	003° 08.016' E
19	52° 36.508' N	002° 25.110' E	40	52° 15.538' N	002° 16.093' E
20	52° 13.336' N	002° 38.124' E	41	52° 40.731' N	002° 41.992' E
21	52° 13.325' N	002° 42.389' E	42	52° 46.641' N	003° 08.164' E

East Coast Region Planned Sampling Locations

	Latitude	Longitude		Latitude	Longitude
1	52° 09.607' N	002° 13.737' E	26	51° 35.632' N	001° 51.504' E
2	51° 30.638' N	001° 36.531' E	27	51° 34.895' N	001° 54.484' E
3	51° 29.714' N	001° 40.217' E	28	51° 34.677' N	001° 55.373' E
4	51° 27.351' N	001° 49.953' E	29	51° 34.187' N	001° 57.377' E
5	51° 27.953' N	001° 47.500' E	30	51° 37.207' N	001° 52.795' E
6	51° 24.496' N	002° 01.498' E	31	51° 36.455' N	001° 55.840' E
7	51° 31.609' N	001° 39.540' E	32	51° 48.901' N	002° 24.516' E
8	51° 30.193' N	001° 45.337' E	33	51° 47.625' N	002° 23.378' E
9	51° 28.959' N	001° 50.359' E	34	51° 58.022' N	002° 32.718' E
10	51° 28.680' N	001° 51.503' E	35	52° 05.921' N	002° 39.878' E
11	51° 25.722' N	002° 03.471' E	36	51° 44.097' N	002° 17.365' E
12	51° 33.068' N	001° 40.907' E	37	51° 52.310' N	002° 24.700' E
13	51° 32.300' N	001° 44.041' E	38	51° 57.141' N	002° 29.046' E
14	51° 29.910' N	001° 53.780' E	39	52° 04.690' N	002° 35.865' E
15	51° 29.109' N	001° 57.019' E	40	51° 14.918' N	001° 52.111' E
16	51° 27.134' N	002° 04.826' E	41	51° 17.889' N	001° 45.887' E
17	51° 33.314' N	001° 46.738' E	42	51° 23.894' N	001° 48.741' E
18	51° 34.470' N	001° 41.997' E	43	51° 12.786' N	001° 53.183' E
19	51° 31.987' N	001° 52.135' E	44	51° 14.961' N	001° 56.714' E
20	51° 31.684' N	001° 53.376' E	45	51° 17.913' N	001° 59.550' E
21	51° 30.987' N	001° 56.175' E	46	51° 21.605' N	002° 01.464' E
22	51° 34.062' N	001° 50.398' E	47	51° 53.226' N	002° 11.779' E
23	51° 33.433' N	001° 52.959' E	48	52° 01.737' N	002° 13.872' E
24	51° 33.196' N	001° 53.921' E	49	52° 01.884' N	002° 11.394' E
25	51° 32.446' N	001° 56.973' E	50	52° 04.903' N	002° 16.715' E

Thames Estuary Region Planned Sampling Locations

	Latitude	Longitude		Latitude	Longitude
1	50° 47.683' N	001° 08.579' E	13	50° 37.302' N	000° 58.671' E
2	50° 45.967' N	001° 05.825' E	14	50° 33.422' N	000° 57.858' E
3	50° 45.739' N	001° 06.058' E	15	50° 34.476' N	000° 56.815' E

4	50° 43.831' N	001° 02.472' E	16	50° 38.678' N	000° 52.637' E
5	50° 38.857' N	001° 07.400' E	17	50° 35.853' N	000° 55.448' E
6	50° 44.076' N	001° 02.228' E	18	50° 37.405' N	000° 48.706' E
7	50° 37.508' N	001° 03.307' E	19	50° 32.657' N	000° 53.428' E
8	50° 39.386' N	001° 01.454' E	20	50° 31.477' N	000° 49.328' E
9	50° 42.773' N	000° 58.086' E	21	50° 32.551' N	000° 48.122' E
10	50° 39.835' N	000° 56.158' E	22	50° 30.966' N	000° 46.546' E
11	50° 35.167' N	001° 00.790' E	23	50° 33.046' N	000° 56.683' E
12	50° 35.761' N	001° 00.194' E			

English Channel Region Planned Sampling Locations

Please note that the Distribution List for this Notice to Mariners is as follows:

UKHO (HDC)	hdcfiles@ukho.gov.uk
UKHO (NM' Es)	sdr@ukho.gov.uk
The Crown Estate	consents@thecrownestate.co.uk
MCA (Navigation Safety)	navigationsafety@mcga.gov.uk
HM Coastguard Dover	dover.coastguard@mcga.gov.uk
Kingfisher Bulletin	kingfisher@seafish.co.uk
NFFO	nffo@nffo.org.uk
IFCA, Southern Region	enquiries@southern-ifca.gov.uk
IFCA, Sussex Region	admin@sussex-ifca.gov.uk
IFCA, Kent & Essex Region	info@kentandessex-ifca.gov.uk
IFCA, Eastern Region	mail@eastern-ifca.gov.uk
IFCA, North-Eastern Region	ne-ifca@eastriding.gov.uk
HMCG Zone 9	Zone9@hmcg.gov.uk
HMCG Zone 10	Zone10@hmcg.gov.uk
HMCG Zone 14	Zone14@hmcg.gov.uk