



Hornsea Three

Notice to Mariners

Notice of Survey Commencement

Ref: 08390602_A

Date: 09/01/2024

1 Introduction

Mariners are advised that Orsted Hornsea Project Three (UK) Limited (hereafter 'Orsted') will be commencing a scope of benthic survey works from the 11th January 2024, weather permitting. The survey is being undertaken to perform visual investigations, for the Hornsea Project Three Offshore Wind Farm (Hornsea Three) project, located within the UK Sector of the North Sea, off the coast of East Yorkshire.

2 Area of operations

Activities are being carried out within the Hornsea Three Order Limits, and the extent of the area in which the survey will be conducted is shown in Figure 2.

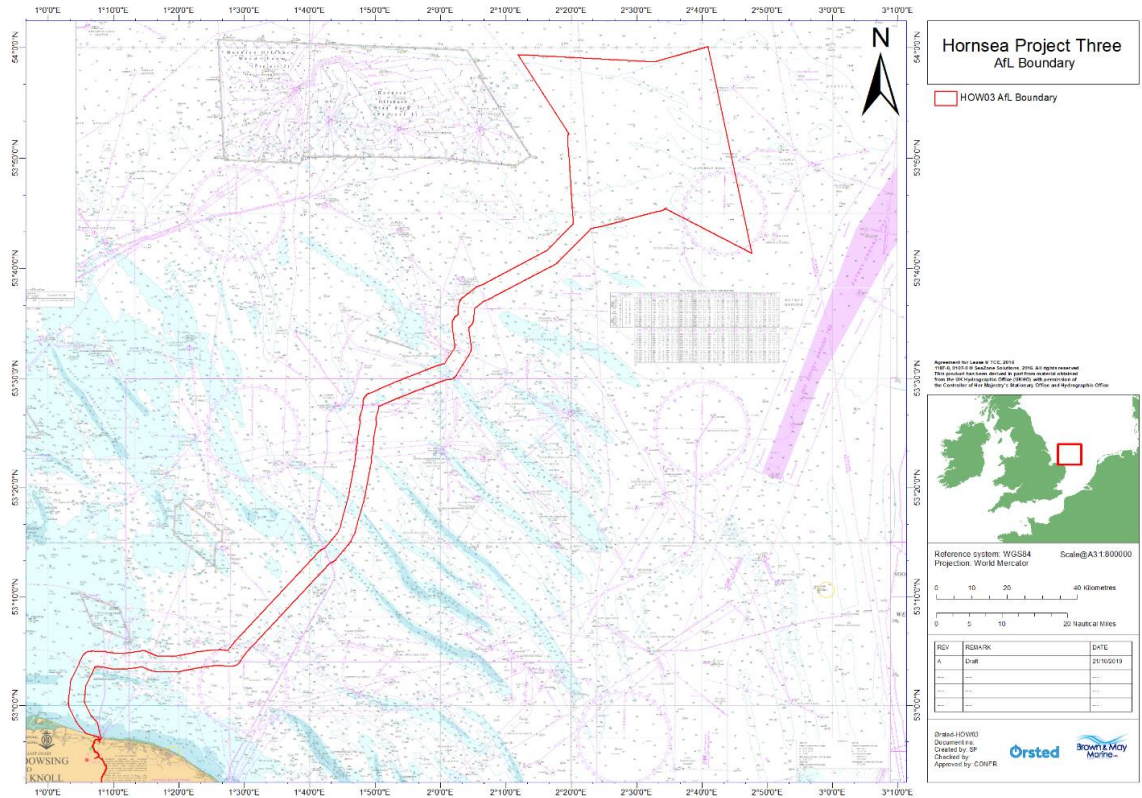


Figure 1: Hornsea Three DCO Order Limits

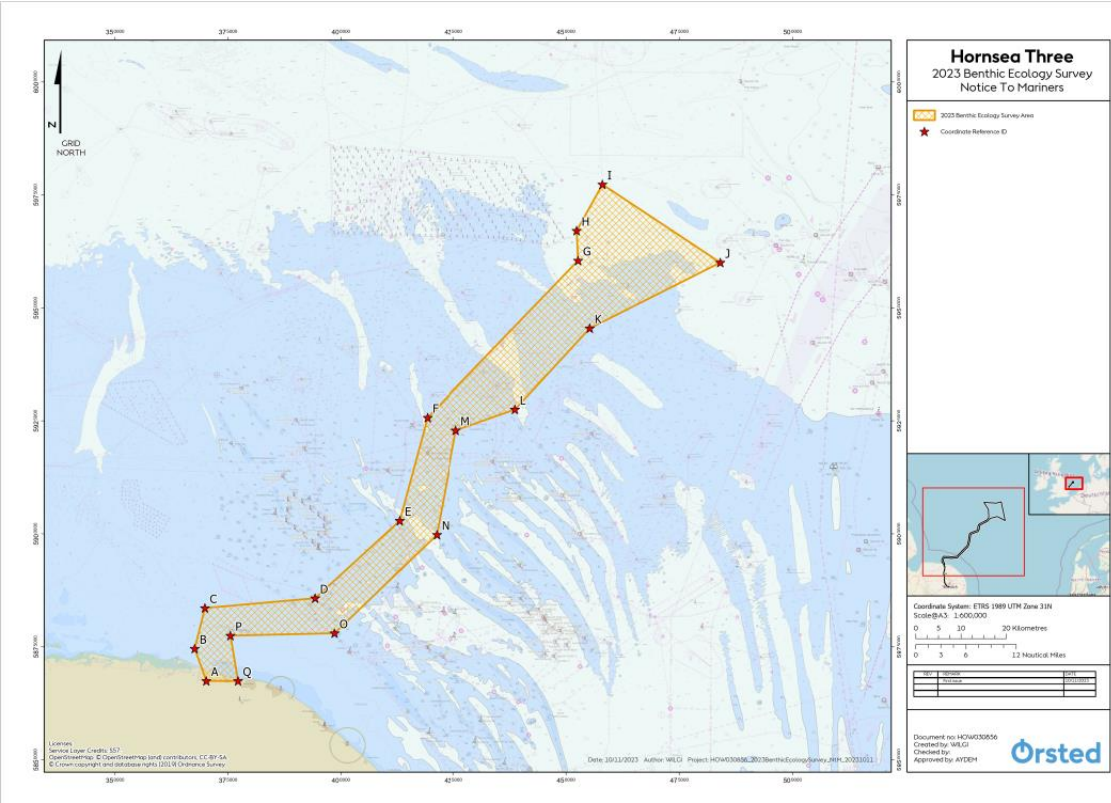


Figure 2: Hornsea Three Survey Area Coordinates

3 Proposed activities

3.1 Proposed survey activity

Please be advised that the operations are anticipated to commence on or near to 11th January 2024, with approximately 8 days of operations, excluding weather downtime. The exact survey dates are dependent on mobilisation time, weather and work progress.

Note that the vessels will have limited manoeuvrability and it is requested that all vessels operating near the survey vessel maintain a safe distance (at least 500m) and pass at minimum speed.

3.2 Safety

It is requested that anybody having knowledge of any potential objects submerged or moored on the seabed within the survey area that could be damaged or form a hazard to the survey vessel and its equipment advises Hornsea Three's Onshore Fisheries Liaison of their position and nature.

Hornsea Three has not requested the clearance of static fishing gear within the survey boundary shown in Figure 1 and described in Section 7 of this Notice. Nonetheless, when surveys commence, a listening watch will be maintained on VHF Channel 12 and 16 when the survey vessel is within the appropriate port authority area and will actively transmit an AIS signal.

4 Immediate contacts

The contents of this notice are based upon our current understanding of Hornsea Three's requirements. Enquiries regarding the contents of this Notice to Mariners or any other matters should be directed to:

Project Manager (Orsted)	Rebecca Goff	
	Tel: +44 (0)7342066656	E-mail: rebgo@orsted.com

5 Fisheries Liaison

Offshore Fisheries Liaison is provided by Adrian Woods (Hornsea Three Fishing Industry Representative), and Sophie Farenden who can be contacted on:

Commercial Fisheries Advisor	Sophie Farenden	
	Tel: +44 (0)7525 128344	E-mail: sophie.farenden@brownmay.com
Onshore Fishing Industry Representative	Adrian Woods	
	Tel: +44 (0)7468 898948	E-mail : firwoods@hotmail.com

There will not be an OFLO on board. If contacting out of standard office hours (Monday-Friday 9am-5pm) please contact the vessel in the first instance.

6 Vessels

Operations will be conducted by the vessel detailed below. Contact can be made directly with the vessel, where necessary, using the contact details listed below.

Braveheart Spirit - Vessel Details



Type/function	Supply Vessel
Vessel contact number	+31 652 786 410
VSAT	+870 773 800 322
Vessel email	spirit@braveheartmarine.com
Call Sign	PEJO
MMSI	244367000
IMO	9507049
Mobilisation Port	Coenhaven, Amsterdam
Length	73.2m
Beam	16.5m

7 Coordinates

Shown in Figure 2: Survey Area. Start/end and mid-point coordinates of the route (ETRS89 UTM 31N).

Map ID	Latitude (WGS84)	Longitude (WGS84)
A	52° 56.459' N	1° 4.102' E
B	53° 0.266' N	1° 1.622' E
C	53° 5.149' N	1° 3.438' E
D	53° 6.642' N	1° 25.239' E
E	53° 16.090' N	1° 41.745' E
F	53° 28.446' N	1° 46.964' E
G	53° 47.439' N	2° 16.876' E
H	53° 51.004' N	2° 16.526' E
I	53° 56.551' N	2° 21.639' E
J	53° 47.313' N	2° 45.483' E
K	53° 39.377' N	2° 19.368' E
L	53° 29.586' N	2° 4.573' E
M	53° 26.985' N	1° 52.791' E
N	53° 14.495' N	1° 49.216' E
O	53° 2.521' N	1° 29.236' E
P	53° 1.932' N	1° 8.630' E
Q	52° 56.558' N	1° 10.373' E

Full coordinate list and plotter files can be provided upon request from Fisheries Liaison personnel, as listed in Section 5.