

NOTICE TO MARINERS



DOGGER BANK OFFSHORE WIND FARM

DATE OF ISSUE:	04/02/2024
NOTICE TO MARINER NUMBER	LF500013-MIP-DOG-NOT-0025 Rev 0003

Dogger Bank A Scour protection (armour) campaign

LOCATION DESCRIPTION		Dogger Bank A Offshore Windfarm, Scour protection locations
COORDINATES	DBA	See Table 1 below
START DATE/TIME		14/02/2024
END DATE/TIME		15/03/2024

Description of Hazard/Operation

Fall Pipe Vessel (FPV) **Flintstone** will continue with subsea rock installation at various locations on DBA.

Flintstone will start operations on 14th of February 2024 and will perform rock placement during multiple loadouts, finishing her scope around 15th of March 2024. Work will be continuous, 24 hours a day. Coordinates of the DBA scour protection locations are presented in Table 1 below.

During operations, **Flintstone** will be restricted in their ability to manoeuvre, as defined under COLREGs (International Regulations for Preventing Collisions at Sea 1972) and will display the appropriate day shapes and lights. The vessel will also transmit an Automatic Identification System (AIS) message.

It is requested that all vessels maintain a minimum of 500m separation distance from the **Flintstone** and pass at reduced speed.

Contact Details

Marine Coordination Contact	Duty Marine Coordinator Gm_dbmcc@equinor.com Tel: +44 (0) 7586 332078
Fisheries Liaison Officer (FLO) CONTACT	Alex Winrow-Giffin, Brown & May Marine Ltd Alex@brownmay.com Tel: 01379 870181 Mob: 07760 160039 Zoë Lawrence - Brown & May Marine Ltd zoe@brownmay.com Mo/b: 07923 138175/
Vessel Shore Contact	Bart van Dun (DEME HSE Manager) Mobile: +31 6 38 68 59 48 Email: BAVD@deme-group.com

NOTICE TO MARINERS

Supporting Information


Vessel – Flintstone	Contact Details	
	Call Sign	PBZD
	MMSI	245861000
	IMO	9528433
	Vessel Details	
	Length	154.6 m
	Breadth (moulded)	32.2 m
	Draught loaded	6.60 m
Vessel Contact	V-Sat: +49 421 517 219 1963 flintstone@ship.deme-group.com	

Table1 Coordinates of the working areas

ID	Latitude	Longitude
DA_C04_QA	54° 44.23' N	001° 51.26' E
DA_B04_QB	54° 43.34' N	001° 50.02' E
DA_P39_QF	54° 40.88' N	001° 53.72' E
DA_P40_QE	54° 41.18' N	001° 52.49' E
DA_P41_QD	54° 41.47' N	001° 51.27' E
DA_P42_QC	54° 41.77' N	001° 50.04' E
DA_OSP	54° 47.00' N	001° 51.63' E

NOTICE TO MARINERS

DOGGER BANK WIND FARM

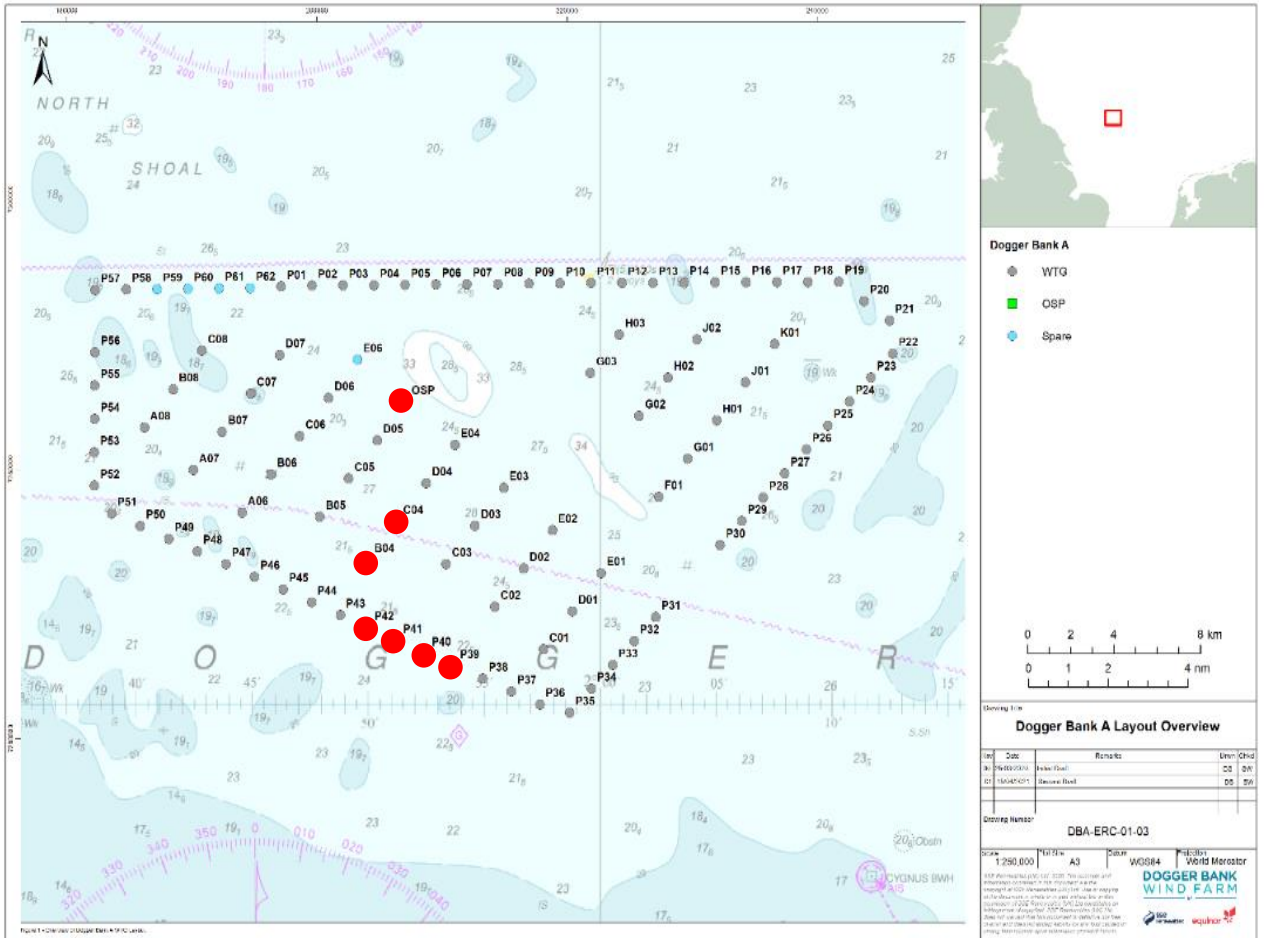


Figure 1: DBA scour protection Locations