

# NOTICE TO MARINERS



## DOGGER BANK OFFSHORE WIND FARM

DATE OF ISSUE:	11/11/2023
NOTICE TO MARINER NUMBER	LF500013-MIP-DOG-NOT-0026 Rev 0002

### HAZARD - Dogger Bank A OWF Monopiles Unlit

LOCATION DESCRIPTION		Dogger Bank A Offshore Windfarm
COORDINATES WGS 84	DBA OWF	See Table 1 below
START DATE/TIME		25/10/2022
END DATE/TIME		30/11/2023

### Description of Hazard

Dogger Bank A Offshore Windfarm has installed all 95 Foundation Monopiles (MP). Transition Pieces (TP) have been installed at 57 of these locations and Wind Turbine Generators (WTG) have been installed at 4 locations.

Prior to TP installation, the installed Monopiles are marked with temporary lighting.

During Storm Babet, the temporary navigation lights on all 38 of the MPs were damaged and the lights are inoperative. Table 2 below provides coordinates of the monopile locations where temporary nav aids are missing or damaged. Figure 3 shows a monopile without a TP installed and with a temporary nav aid in place.

A programme to repair and replace the temporary navigation lights is being undertaken. Once all are restored an update will be published and this NtM will be withdrawn.

UPDATE: 36 monopiles remain unlit and unmarked, as detailed in Table 2 below.

The DBA Guard vessels will broadcast a safety message alerting vessels of this hazard.

All vessels are requested to navigate with caution in the vicinity of the Dogger Bank A construction site and where possible are requested to remain outside the construction site boundary.

### Contact Details

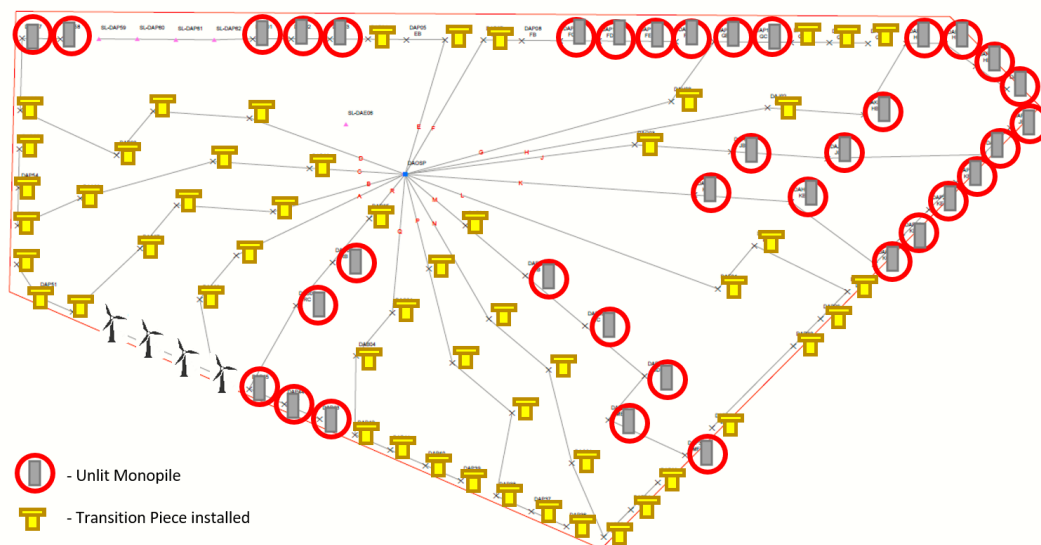
Marine Coordination Contact	Duty Marine Coordinator Tel: +44 (0) 7586 332078 <a href="mailto:gm_dbmcc@equinor.com">gm_dbmcc@equinor.com</a>
Fisheries Liaison Officer (FLO) CONTACT	Alex Winrow-Giffin, Brown & May Marine Ltd <a href="mailto:Alex@brownmay.com">Alex@brownmay.com</a> Tel: 01379 870181 Mob: 07760 160039 Zoë Lawrence - Brown & May Marine Ltd <a href="mailto:zoe@brownmay.com">zoe@brownmay.com</a> Mob: 07923 138175

# NOTICE TO MARINERS

## Supporting Information

**Table1:** Coordinates for DBA Construction Area

Latitude (WGS 84)	Longitude (WGS 84)
54° 50.526'N	001° 37.141'E
54° 50.630'N	002° 10.286'E
54° 48.815'N	002° 14.689'E
54° 39.162'N	001° 58.695'E
54° 44.216'N	001° 37.550'E



**Figure 1:** Dogger Bank A OWF WTG / Foundation Installation

**Table2:** Monopile locations where temporary nav aids are missing or damaged and unlit

Location	Type	Lat	Long
B05	Monopile	54°44.33'N	001°47.92'E
C05	Monopile	54°45.22'N	001°49.16'E
D01	Monopile	54°42.15'N	001°58.80'E
E01	Monopile	54°43.03'N	002°00.04'E
E02	Monopile	54°44.02'N	001°57.95'E

# NOTICE TO MARINERS

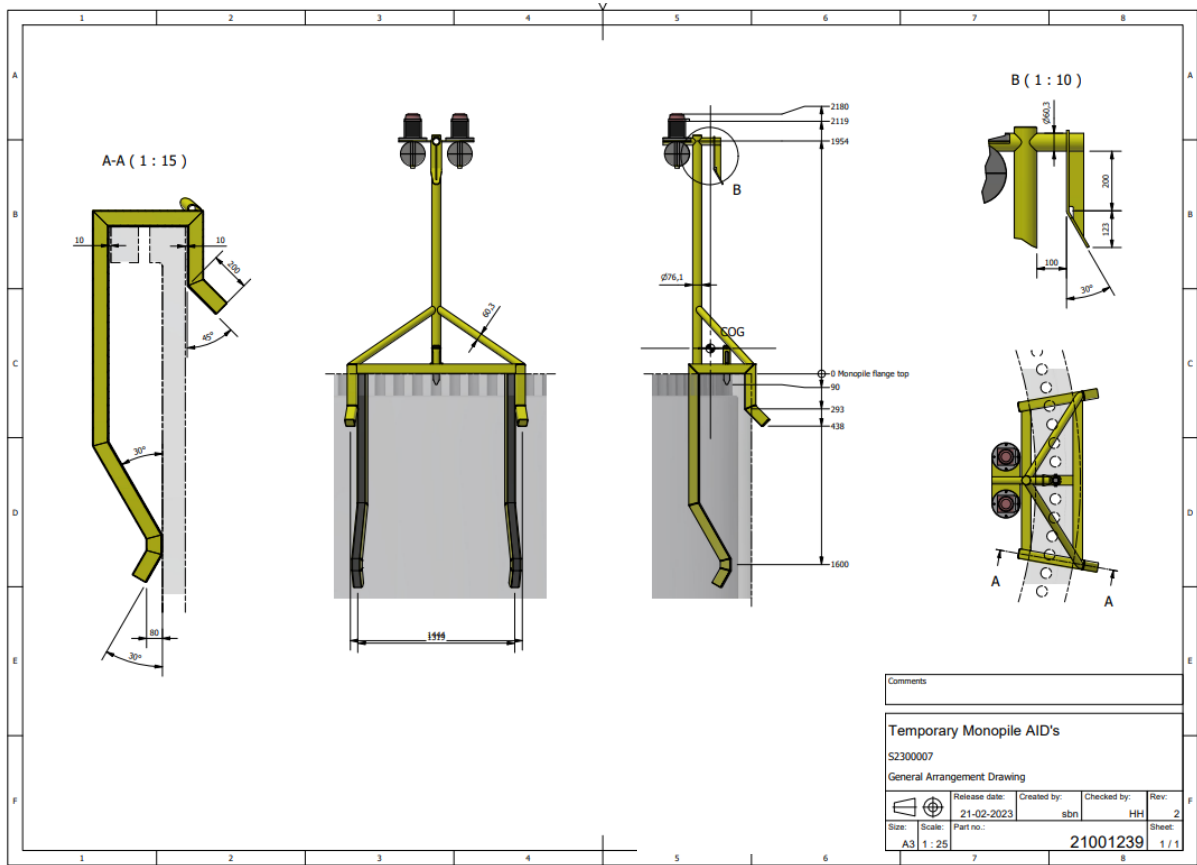
DOGGER BANK  
WIND FARM

G02	Monopile	54°46.67'N	002°01.68'E
H01	Monopile	54°46.56'N	002°05.02'E
H02	Monopile	54°47.55'N	002°02.92'E
J01	Monopile	54°47.44'N	002°06.27'E
K01	Monopile	54°48.32'N	002°07.52'E
P01	Monopile	54°49.66'N	001°46.25'E
P02	Monopile	54°49.67'N	001°47.59'E
P03	Monopile	54°49.68'N	001°48.93'E
P09	Monopile	54°49.72'N	001°56.94'E
P10	Monopile	54°49.72'N	001°58.27'E
P11	Monopile	54°49.73'N	001°59.61'E
P12	Monopile	54°49.73'N	002°00.94'E
P13	Monopile	54°49.74'N	002°02.28'E
P14	Monopile	54°49.75'N	002°03.62'E
P18	Monopile	54°49.76'N	002°08.96'E
P19	Monopile	54°49.76'N	002°10.29'E
P20	Monopile	54°49.32'N	002°11.38'E
P21	Monopile	54°48.87'N	002°12.47'E
P22	Monopile	54°48.10'N	002°12.61'E
P23	Monopile	54°47.55'N	002°11.68'E
P24	Monopile	54°47.00'N	002°10.75'E
P25	Monopile	54°46.45'N	002°09.82'E
P26	Monopile	54°45.89'N	002°08.89'E
P27	Monopile	54°45.34'N	002°07.96'E
P43	Monopile	54°42.06'N	001°48.81'E

# NOTICE TO MARINERS

# DOGGER BANK WIND FARM

P44	Monopile	54°42.36'N	001°47.57'E
P45	Monopile	54°42.65'N	001°46.34'E
P57	Monopile	54°49.58'N	001°38.24'E
P58	Monopile	54°49.58'N	001°39.58'E
E03	Monopile	54°45.01'N	001°55.85'E
P32	Monopile	54°41.46'N	002°01.47'E



**Figure 2: Monopile Aid to Navigation Marking**



**Figure 3:** Photograph of installed Monopile showing temporary Aid to Navigation Marking