

NOTICE TO MARINERS



DOGGER BANK OFFSHORE WIND FARM

DATE OF ISSUE:	23/08/2023
NOTICE TO MARINER NUMBER	LF600013-CST-DOG-NOT-0003 Rev 002

Dogger Bank B + C Boulder\Debris Relocation Campaign

LOCATION DESCRIPTION		Dogger Bank B + C Offshore Windfarm
COORDINATES WGS 84	DBB OWF	See Table 1 below
	DBC ECR	See Table 2 below
	DBC OWF	See Table 3 below
START DATE/TIME		01/09/2023
END DATE/TIME		10/11/2023

Description of Hazard/Operation

The Offshore Supply Vessel, **OLYMPIC ELECTRA**, will perform boulder clearance operations within Dogger Bank B and C Array Areas and the Dogger Bank C Export Cable Route.

The works will be performed in a single campaign, commencing on the 01st September 2023 and continuing until approximately 11th November 2023. The works will be continuous, 24 hours a day. Charts of the DBB Array / DBC Array and Export Cable Route areas including are provided below.

The operations include the relocation and/or removal of subsea obstructions such as boulders and debris by means of a subsea grab mounted on a Utility ROV (UTROV).

During operations, the **OLYMPIC ELECTRA** will be restricted in its ability to manoeuvre as defined under COLREGs (International Regulations for Preventing Collisions at Sea 1972) and will display the appropriate day shapes and lights. The vessel will also transmit an Automatic Identification System (AIS) message.

It is requested that all vessels maintain a minimum of 500m separation distance from the Offshore Supply Vessel and pass at reduced speed.

Contact Details

Marine Coordination Contact	Duty Marine Coordinator Tel: +44 (0) 7586 332078 gm_dbmcc@equinor.com
Fisheries Liaison Officer (FLO) CONTACT	Alex Winrow-Giffin, Brown & May Marine Ltd Alex@brownmay.com Tel: 01379 870181 Mob: 07760 160039 Zoë Lawrence - Brown & May Marine Ltd zoe@brownmay.com Mob: 07923 138175
Vessel Shore Contact	Craig Roberts Murphy (UTROV Project Manager) Mobile: +44 7519 574224 Email: craig.roberts@utrov.com

NOTICE TO MARINERS

Supporting Information

Vessel – Olympic Electra		Contact Details	
	C/S	LCZX3	
	MMSI/IMO	257339000/9547415	
	Vessel Details		
	Length	79.7m	
	Beam	16.4m	
Draft	6.2m		
Vessel Contact	V-sat: +47 23 39 71 40 Mobile: +47 966 13461 E-mail: electra.captain@olympic.no		
Office contact	E-mail: georg.gaaso@olympic.no		

Table 1: Coordinates for DBB Array Area

Latitude (WGS 84)	Longitude (WGS 84)
55° 05.756'N	001° 25.694'E
55° 07.631'N	001° 40.049'E
55° 07.767'N	001° 53.890'E
54° 49.767'N	001° 54.456'E
54° 50.731'N	001° 25.315'E

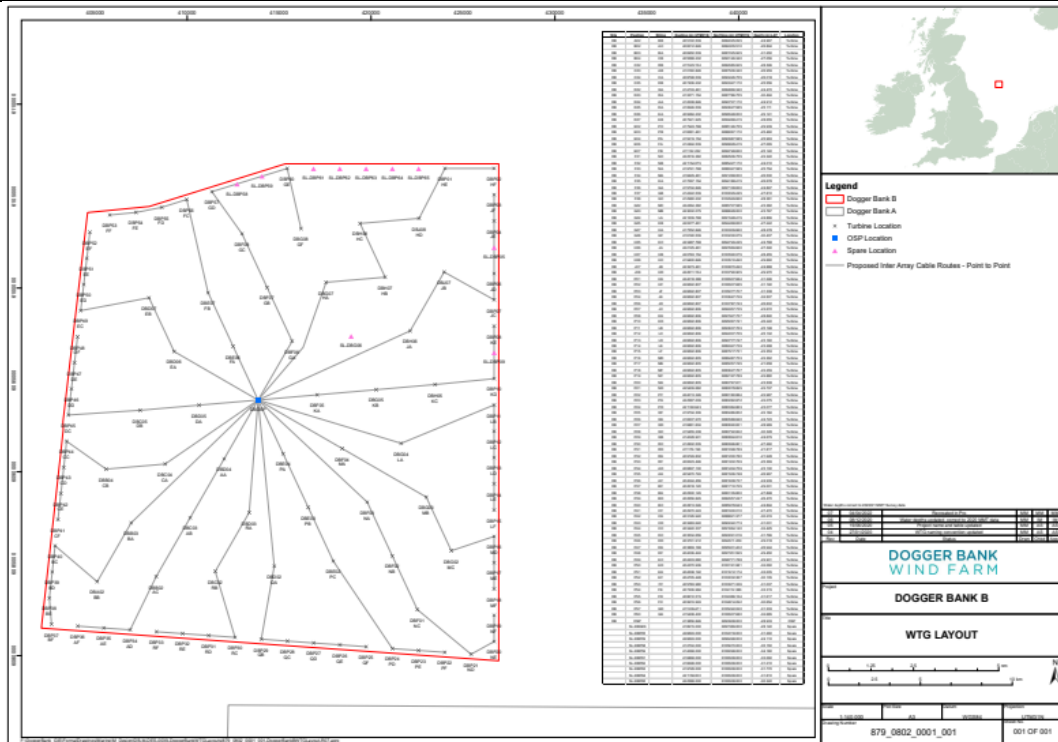


Figure 1: Dogger Bank B OWF Array Layout

NOTICE TO MARINERS

DOGGER BANK WIND FARM

Table2: Coordinates for DBC Array Area

Latitude (WGS 84)	Longitude (WGS 84)
55°08.119'N	002°32.765'E
55°08.152'N	002°45.781'E
54°58.196'N	003°00.170'E
54°56.238'N	003°00.169'E
54°56.191'N	002°32.921'E

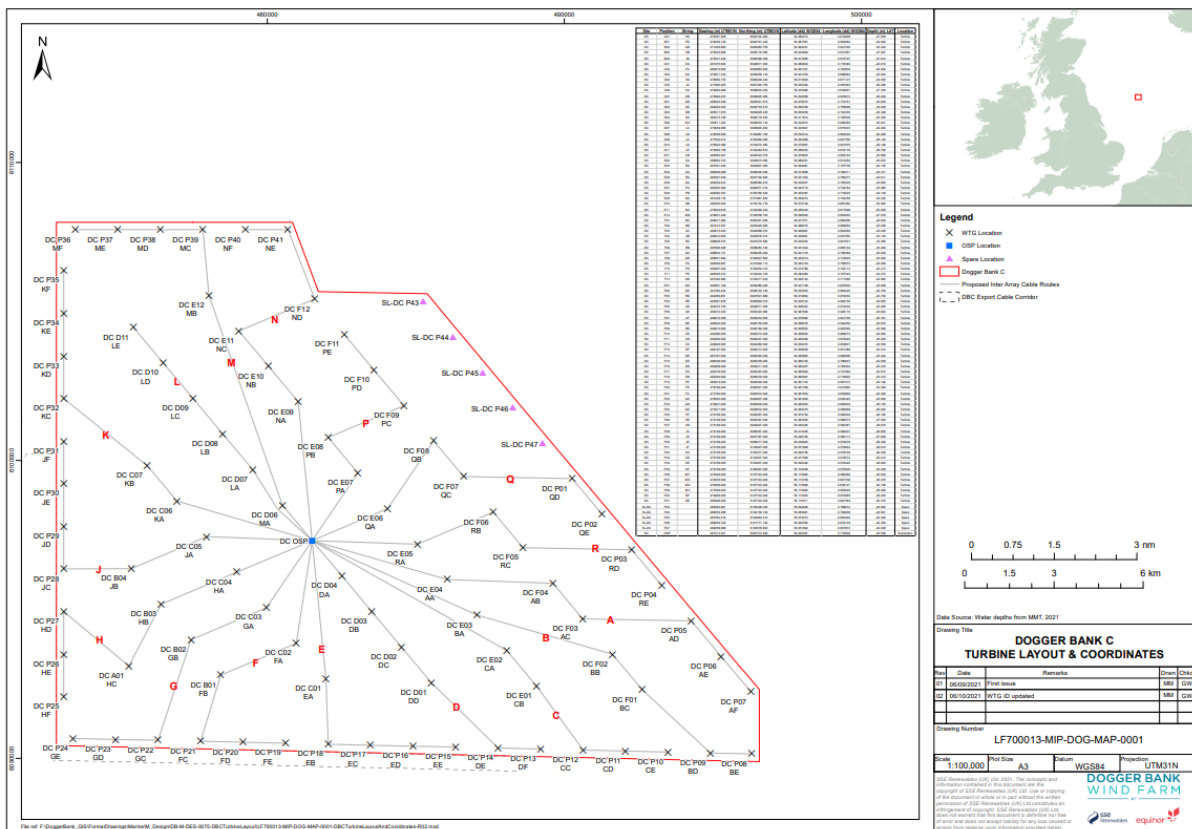


Figure 2: Dogger Bank C OWF Array Layout

Table 3: Coordinates for DBC Export Cable Route Construction Area

NOTICE TO MARINERS

DOGGER BANK WIND FARM

Latitude (WGS 84)	Longitude (WGS 84)
54°36.099'N	000°57.818'W
54°36.078'N	000°57.493'W
54°36.114'N	000°56.476'W
54°36.253'N	000°55.199'W
54°36.089'N	000°54.569'W
54°36.132'N	000°53.869'W
54°36.104'N	000°53.559'W
54°36.472'N	000°50.406'W
54°37.282'N	000°47.627'W
54°37.377'N	000°46.486'W
54°37.285'N	000°44.399'W
54°37.432'N	000°42.804'W
54°37.279'N	000°38.232'W
54°37.955'N	000°34.614'W
54°38.776'N	000°33.773'W
54°39.487'N	000°32.553'W
54°39.888'N	000°29.061'W
54°40.159'N	000°28.126'W
54°40.173'N	000°26.524'W
54°40.502'N	000°23.776'W
54°41.322'N	000°12.889'W
54°42.521'N	000°09.266'W
54°42.661'N	000°03.380'W
54°42.588'N	000°01.962'E
54°44.028'N	000°14.491'E
54°47.624'N	000°29.764'E
54°47.663'N	000°38.727'E
54°50.095'N	000°54.949'E
54°50.767'N	001°03.096'E
54°51.481'N	001°10.516'E
54°52.024'N	001°17.890'E
54°51.761'N	001°22.900'E
54°50.908'N	001°51.559'E
54°51.014'N	001°56.735'E
54°50.754'N	002°13.238'E
54°50.984'N	002°17.397'E
55°00.410'N	002°33.689'E
55°00.424'N	002°37.135'E
55°01.007'N	002°39.512'E
55°01.248'N	002°41.160'E
55°01.339'N	002°42.628'E

NOTICE TO MARINERS

DOGGER BANK WIND FARM

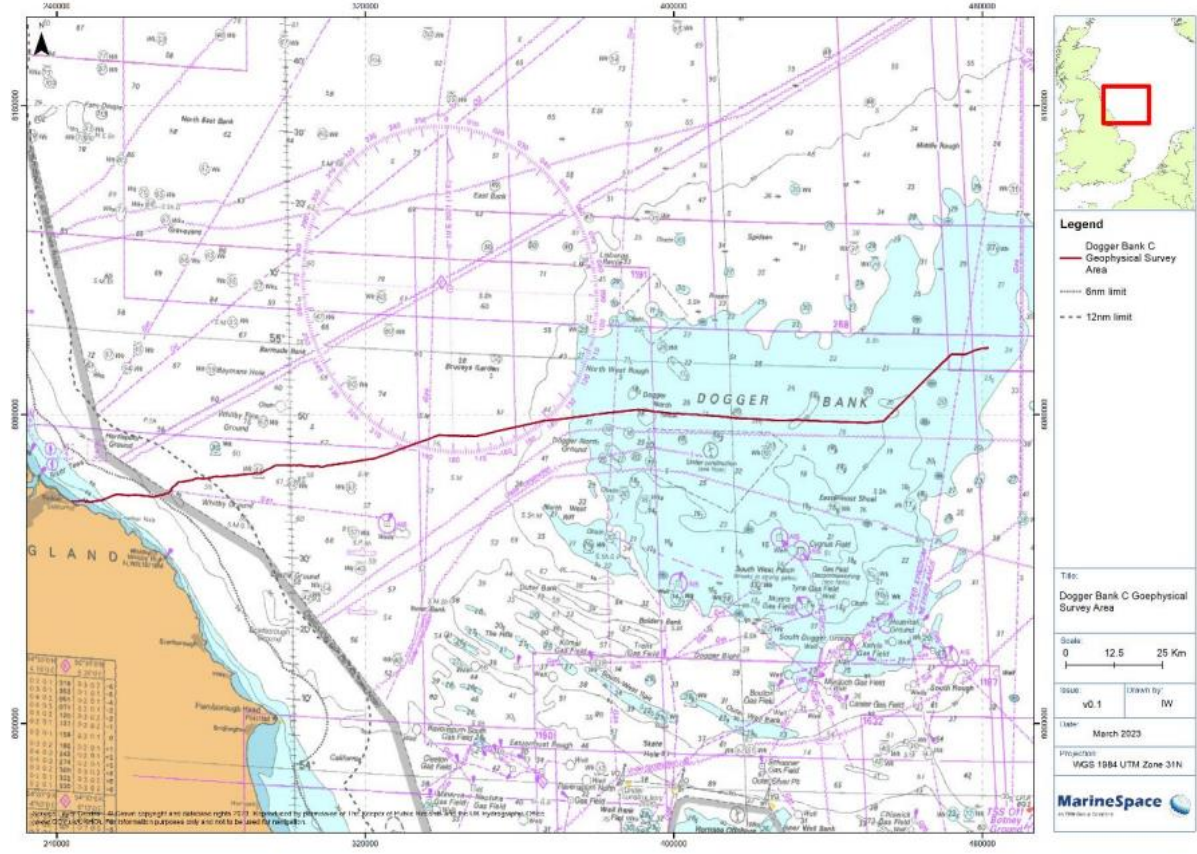


Figure 3: Dogger Bank C Export Cable Route