

NOTICE TO MARINERS



DOGGER BANK OFFSHORE WIND FARM

DATE OF ISSUE:	04/08/2023
NOTICE TO MARINER NUMBER	LF600013-ESI-DOG-NOT-0001

Dogger Bank B Export Cable Burial, Reduction to Water Depth

LOCATION DESCRIPTION	Dogger Bank B Offshore Windfarm, Export Cable Corridor	
COORDINATES	DBB Export Cable Corridor	See Table 1 below
START DATE/TIME	04/08/2023	
END DATE/TIME	Until as-built data reviewed to confirm changes in water depth	

Description of Hazard/Operation

During the current ongoing campaign to lay and bury the Dogger Bank B export cable, it has been necessary to install rock berm protection over the cable in locations where it has not been possible to trench bury the cable.

In the section of cable shown in Figure 1 the rock berm installation has been installed to a maximum height of approximately 1m above seabed level. In these locations, this represents a reduction in depth at Lowest Astronomical Tide (LAT) of approximately 5-8%.

Once the detailed as-built data has been reviewed and confirmation of water depth reductions at the location in Figure 1, an updated Notice to Mariners will be distributed to confirm the changes in water depth.

Contact Details

Marine Coordination Contact	Duty Marine Coordinator Tel: +44(0)7586 332078 gm_dbmcc@equinor.com
Fisheries Liaison Officer (FLO)	Alex Winrow-Giffin, Brown & May Marine Ltd Alex@brownmay.com Tel: 01379 870181 Mob: 07760 160039 Zoë Lawrence - Brown & May Marine Ltd zoe@brownmay.com Mob: 07923 138175

Supporting Information

Table 1 Coordinates of the rock berm installation

All locations referenced to WGS 84

ID	Degrees Decimal Minutes	
	Latitude	Longitude
1 (Start of rock berm)	54° 1.904'N	0° 4.994'W
2	54° 2.093'N	0° 4.222'W

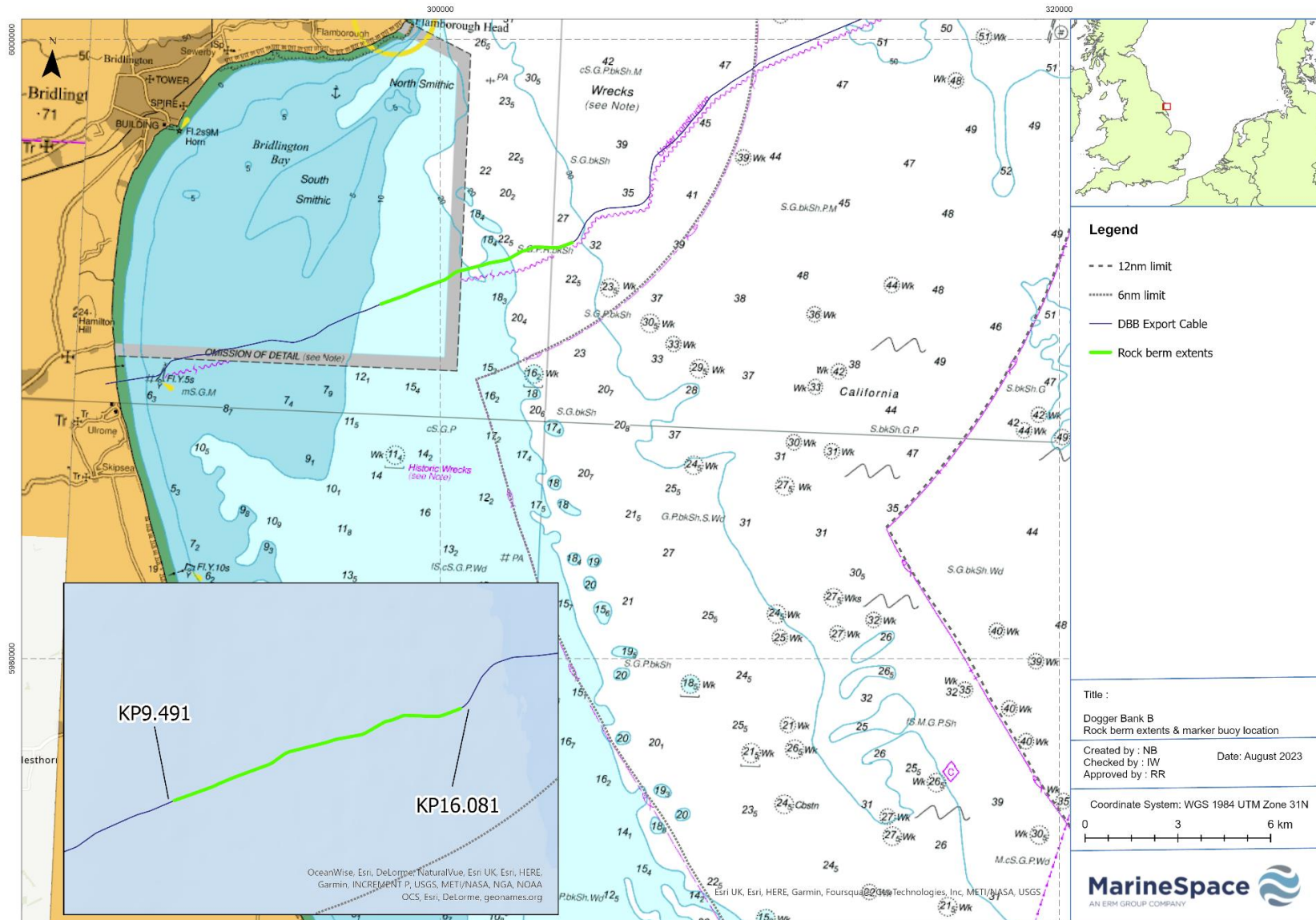
NOTICE TO MARINERS

DOGGER BANK WIND FARM

ID	Degrees Decimal Minutes	
	Latitude	Longitude
3	54° 2.403'N	0° 3.071'W
4	54° 2.520'N	0° 2.802'W
5	54° 2.605'N	0° 2.131'W
6	54° 2.693'N	0° 1.877'W
7	54° 2.780'N	0° 1.294'W
8	54° 2.937'N	0° 0.845'W
9	54° 3.009'N	0° 0.525'W
10	54° 3.019'N	0° 0.167'W
11 (End of rock berm)	54° 3.122'N	0° 0.594'E

NOTICE TO MARINERS

DOGGER BANK WIND FARM



Service Layer Credits: © Crown copyright and database rights 2023. For information purposes only and not to be used for navigation.

Figure 1: Dogger Bank B Export Cable Water Depth Reduction Location