

NOTICE TO MARINERS



DOGGER BANK OFFSHORE WIND FARM

DATE OF ISSUE:	15/09/2023
NOTICE TO MARINER NUMBER	LF600013-MIP-DOG-NOT-0011

Dogger Bank B Foundation Installation Underwater Noise Monitoring

LOCATION DESCRIPTION		Dogger Bank B Offshore Windfarm
COORDINATES WGS 84	DBB OWF noise monitoring locations	See Table 1 below
Start Date of Monitoring works		24/09/2023

Description of Hazard/Operation

On behalf of Dogger Bank Windfarm, Subacoustech Environmental Ltd will carry out underwater noise monitoring during the first five piling operations to install foundation monopiles using the Service offshore supply vessel, **VOS Start**, within the Dogger Bank B construction area.

The works will commence on the 24 September 2023, continuing until the first five piling operations are complete. The works will be continuous, 24 hours a day. Charts of the DBB construction area and noise monitoring locations are provided below. The first five foundation locations are highlighted.

For each monitored piling event, the **VOS Start** will deploy a transect of up to four hydrophones on the seabed. The distances have been set at 750m, 1,500m, 5,000m and 10,000m from the piling site. Noise measurement equipment will consist of Autonomous Recording Units (ARUs) with one low sensitivity (Hi-SPL) hydrophone per unit at an approximate 2/3rd water depth. Each ARU will be moored by a fixed weight to the seabed. Equipment will be deployed prior to the start of piling operations and will be retrieved after completion.

During operations, the **VOS Start** will be restricted in its ability to manoeuvre as defined under COLREGs (International Regulations for Preventing Collisions at Sea 1972) and will display the appropriate day shapes and lights. The vessel will also transmit an Automatic Identification System (AIS) message.

It is requested that all vessels maintain a minimum of 500m separation distance from the **VOS Start** and pass at reduced speed.

Contact Details

Marine Coordination Contact	Duty Marine Coordinator Tel: +44 (0) 7586 332078 gm_dbmcc@equinor.com
Fisheries Liaison Officer (FLO) CONTACT	Alex Winrow-Giffin, Brown & May Marine Ltd Alex@brownmay.com Tel: 01379 870181 Mob: 07760 160039 Zoë Lawrence - Brown & May Marine Ltd zoe@brownmay.com Mob: 07923 138175
Subacoustech Environmental Ltd. Shore Contact	Sam East, Subacoustech Environmental Ltd. Tel: +44 (0) 7816 236330 Sam.east@subacoustech.com

NOTICE TO MARINERS

DOGGER BANK WIND FARM

Supporting Information


Vessel Name – VOS Start	Vessel Contact Details	
	Call Sign	PBIH
	MMSI	244890845
	IMO	9730505
	VHF Channel	16 & 70
	Bridge	+46 31 31 00 301
	Email	bridge@vosstart.fleetvroom.com
	Vessel Details	
	Length	80.0m
	Breadth	18.4m
	Draft	6.0m
Other Information		
Offshore Supply Vessel		

Table 1: Coordinates for DBB Array Area

Latitude (WGS 84)	Longitude (WGS 84)
55° 05.756'N	001° 25.694'E
55° 07.631'N	001° 40.049'E
55° 07.767'N	001° 53.890'E
54° 49.767'N	001° 54.456'E
54° 50.731'N	001° 25.315'E

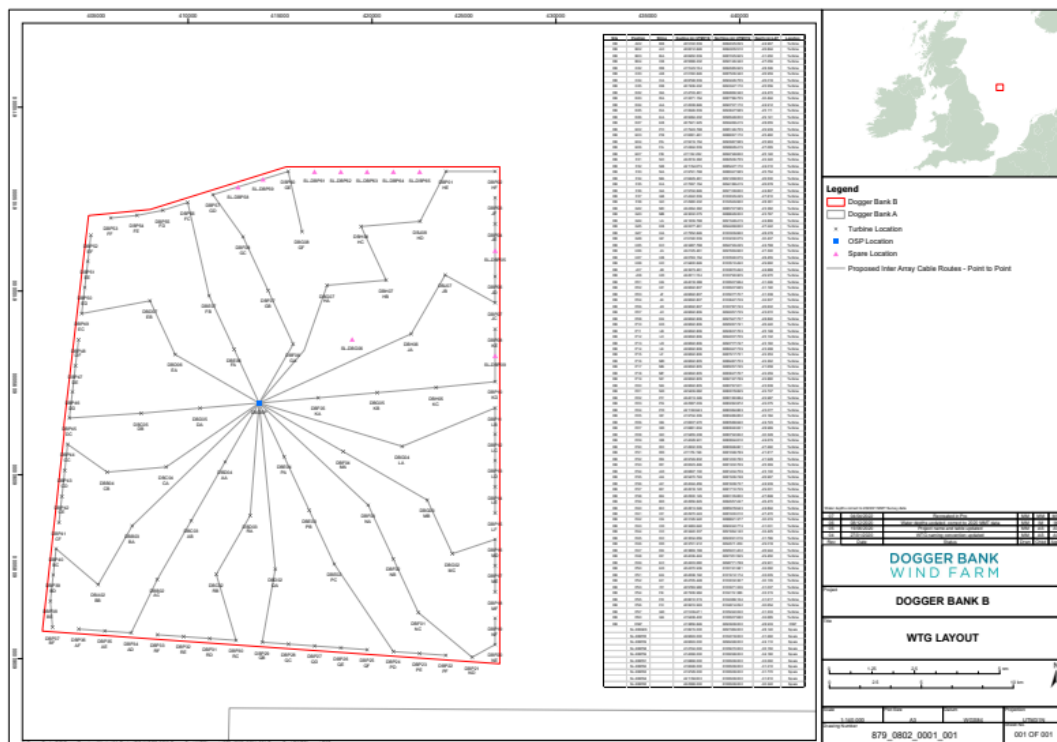


Figure 1: Dogger Bank B OWF WTG Layout

NOTICE TO MARINERS

DOGGER BANK WIND FARM

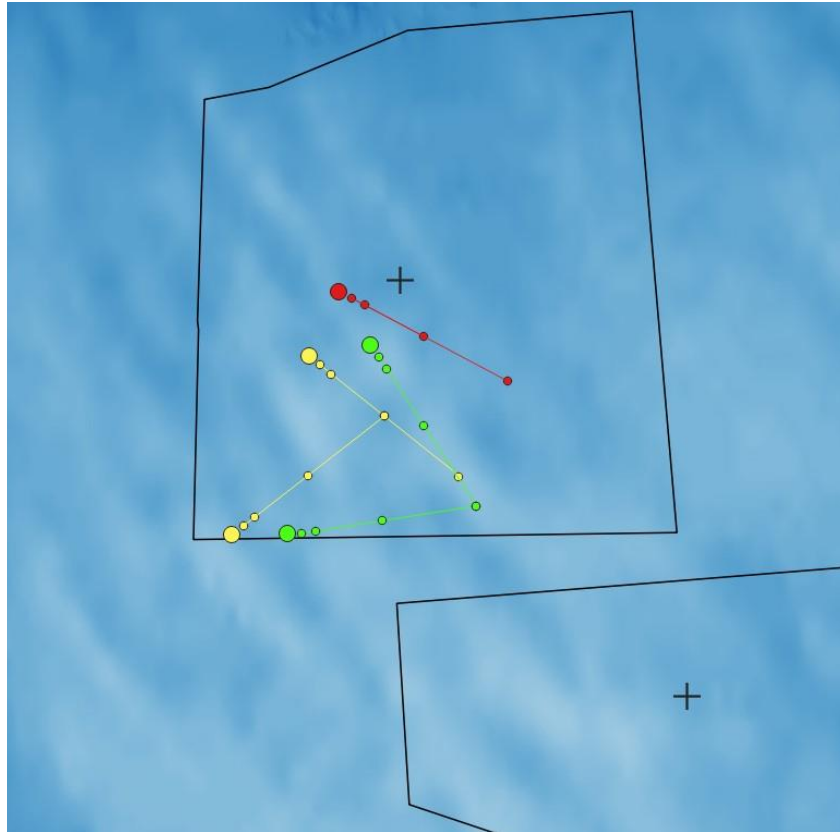


Figure 2: Dogger Bank B Monopile Locations and Measurement Locations

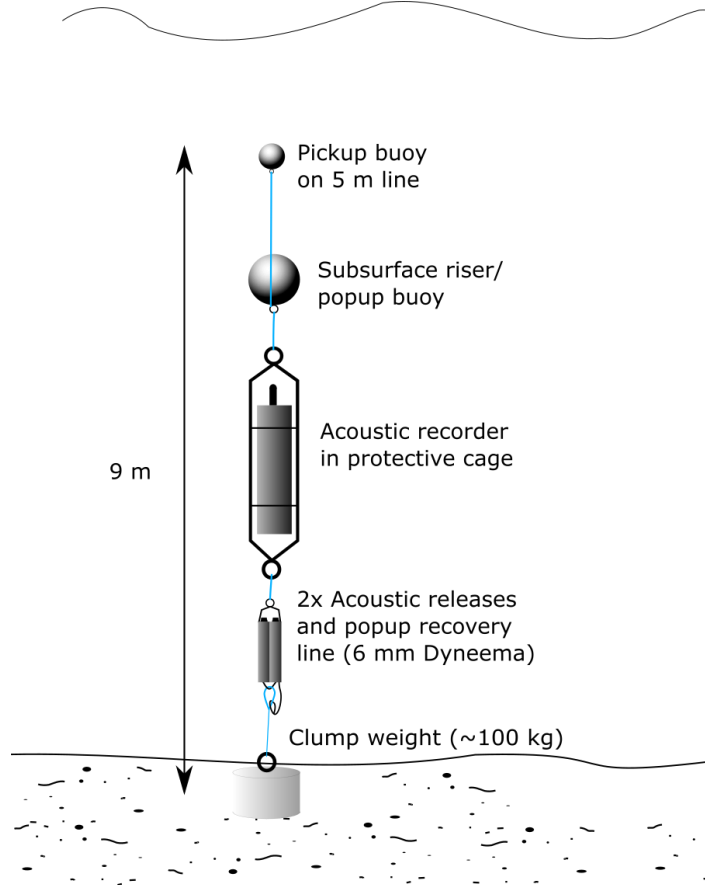


Figure 3: A schematic of the proposed single line mooring

NOTICE TO MARINERS

DOGGER BANK WIND FARM

Monopile Designation	D04	P34	P36	C04	D05
Latitude/Longitude	54 57.33N 001 37.55E	54 52.26N 001 32.94E	54 52.33N 001 30.27E	54 57.14 001 34.55E	54 58.89N 001 36.22E
750 m					
Approx. Depth (m)	17.8m	21.8m	23.8m	22.4m	25.1m
Latitude	54 52.23N	54 56.99N	54 52.55N	54 56.87N	54 58.68N
Longitude	001 33.64E	001 37.93E	001 30.87E	001 35.07E	001 36.81E
1,500 m					
Approx. Depth (m)	17.6m	20.6m	21.8m	21.0m	25.3m
Latitude	54 52.27N	54 56.64N	54 52.78N	54 56.60N	54 58.47N
Longitude	001 34.33E	001 38.27E	001 31.44E	001 35.58E	001 37.4106 E
5,000 m					
Approx. Depth (m)	19.3m	22.8m	21.8m	24.2m	25.2m
Latitude	54 52.44N	54 55.00N	54 53.83N	54 54.26N	54 57.48N
Longitude	001 37.55E	001 39.86E	001 34.13E	001 37.86E	001 40.15E
10,000 m					
Approx. Depth (m)	17.5m	24.2m	24.2m	17.3m	24.0m
Latitude	54 52.67N	54 52.67N	54 54.26N	54 53.51N	54 56.08N
Longitude	001 42.14E	001 42.14E	001 37.86E	001 41.37E	001 44.07E

Table 2: Coordinates for DBB first five foundation piling locations and locations of ARU deployment(s)