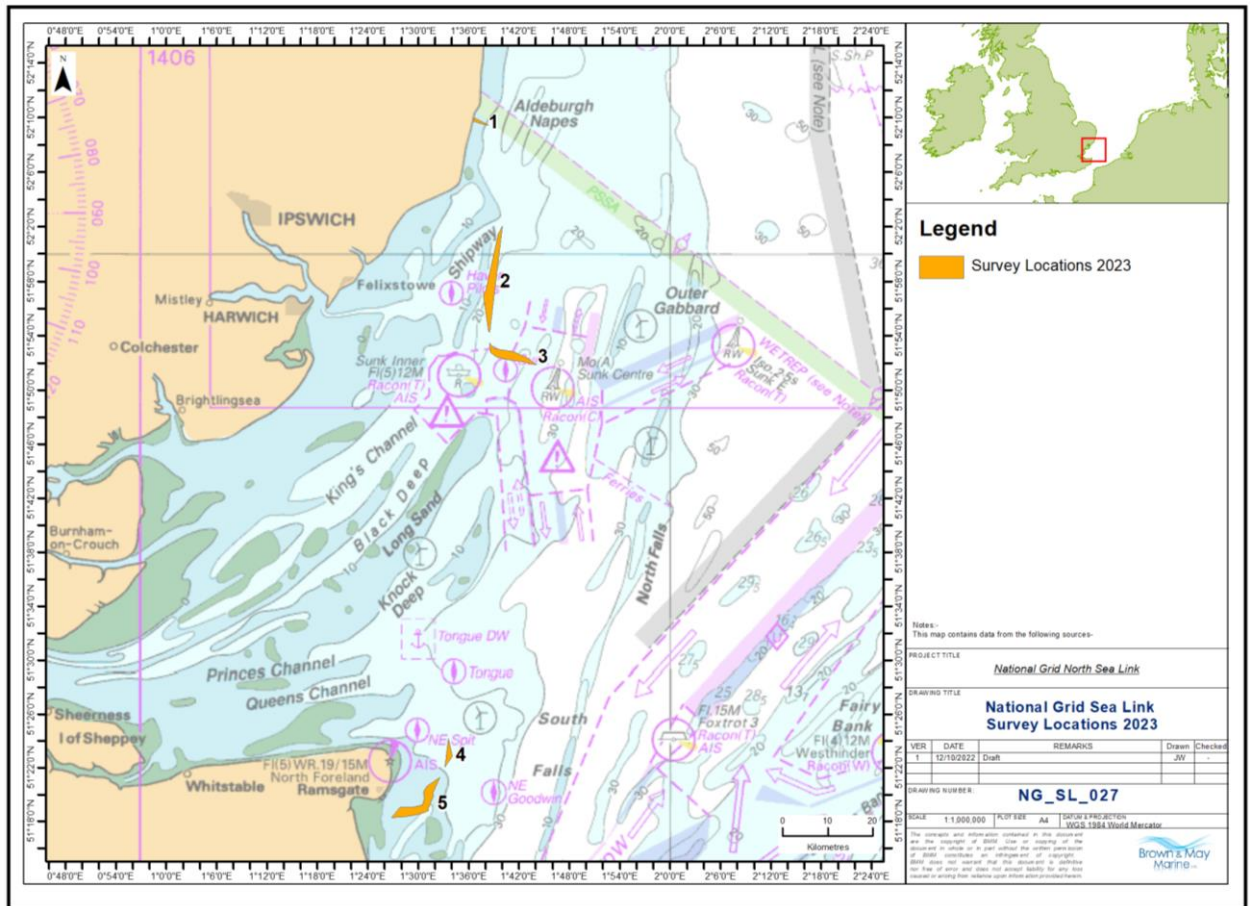


**National Grid – Sea Link
Offshore and Nearshore Geophysical Marine Surveys 2023
Rev1.0 - Issued: 23/10/2023**

Mariners are advised that survey vessels and equipment will be used in offshore areas and coastal sea waters between Aldeburgh, Suffolk and Pegwell Bay, Ramsgate, Kent in 5 as shown in Figure 1. The survey is being undertaken on behalf of National Grid’s Sea Link Project, a proposed HVDC electricity transmission connection between the two locations.

Information about the Sea Link project can be found on their website:

<https://www.nationalgrid.com/electricity-transmission/network-and-infrastructure/infrastructure-projects/sealink/about-sea-link>



The specific areas of work, pertaining to this Notice to Mariners (NtM) Sea Link, are shown in more detail in Figures 2, 3, 4, 5 and 6, which also show the coordinates for the areas. Survey vessels contact details for the project are in Tables 1 and 2.

The geophysical survey work will be carried out by Next Geosolutions using survey vessels Shore Presence and Shore Possibility from 4th November 2023. Forecasted survey start dates for each area are shown below and are subject to change.

- Area 1 – 11th November 2023
- Area 2 – 04th November 2023
- Area 3 – 14th November 2023
- Area 4 – 22nd November 2023
- Area 5 – 25th November 2023

Surveys are expected to be completed by early January 2024.

All vessels shall pass at a safe speed and distance, whilst fishing vessels are asked to remain at a safe distance (approximately 500 metres where possible) (COLREGs Rule 16 & 18) from the areas identified during marine survey operations. The aforementioned survey vessels will be restricted in her ability to manoeuvre and shall deploy towed sensors during geophysical survey operations only. The survey vessels will monitor VHF Channel 16 at all times. Mobile contacts for the vessels are listed at the end of this NtM.

Figure 2 – Survey Area 1

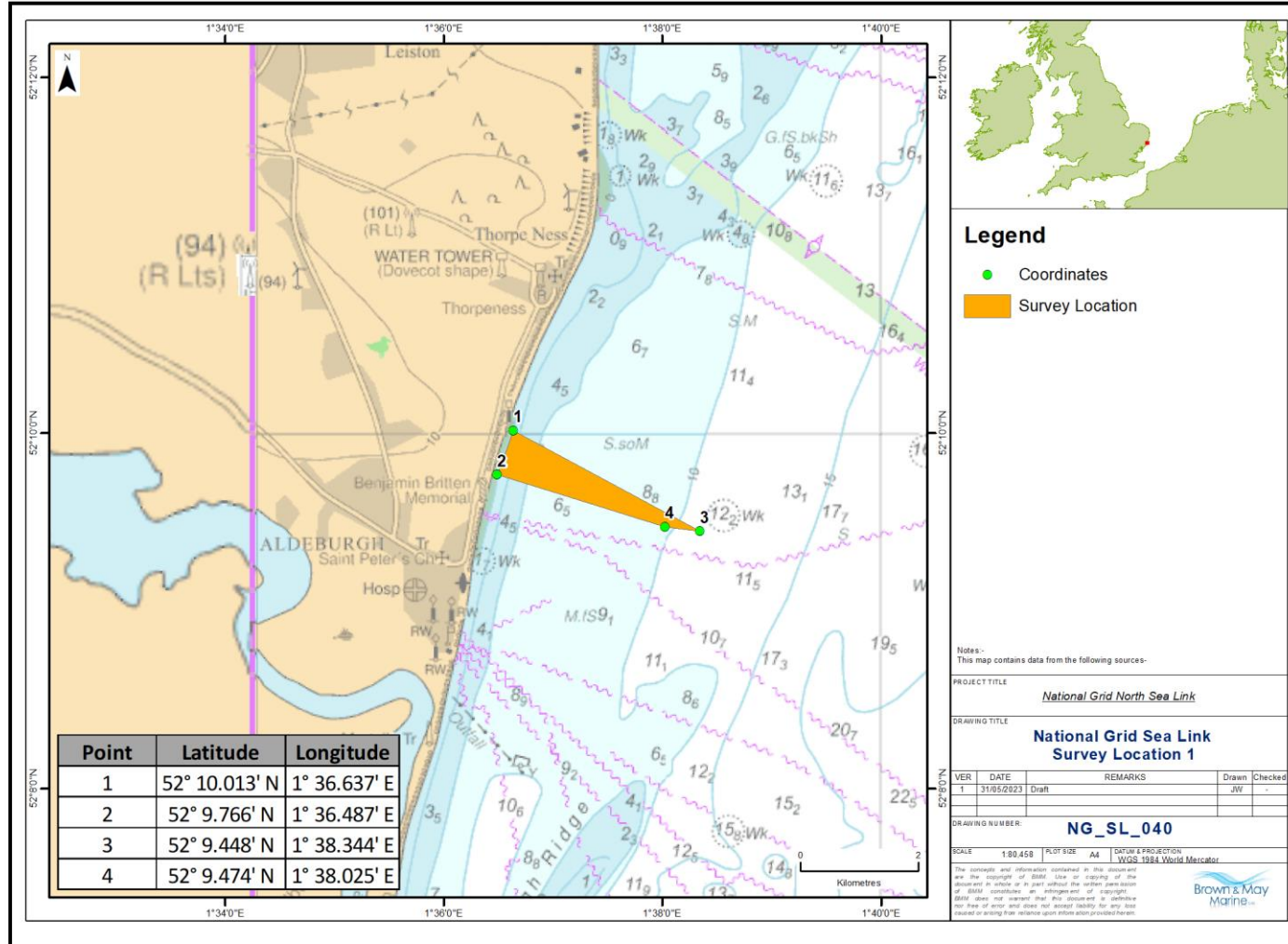


Figure 3 – Survey Area 2

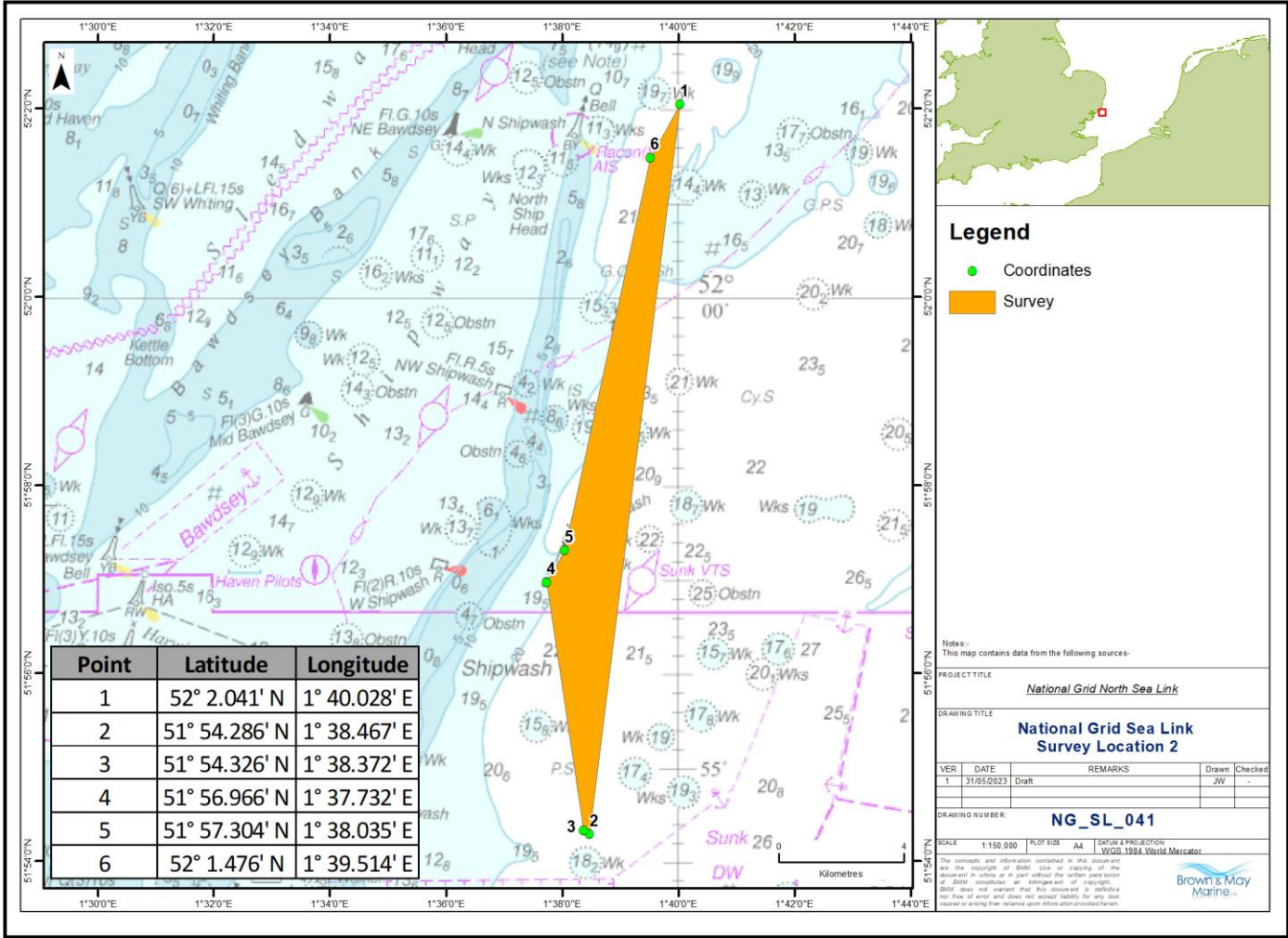


Figure 4 – Survey Area 3

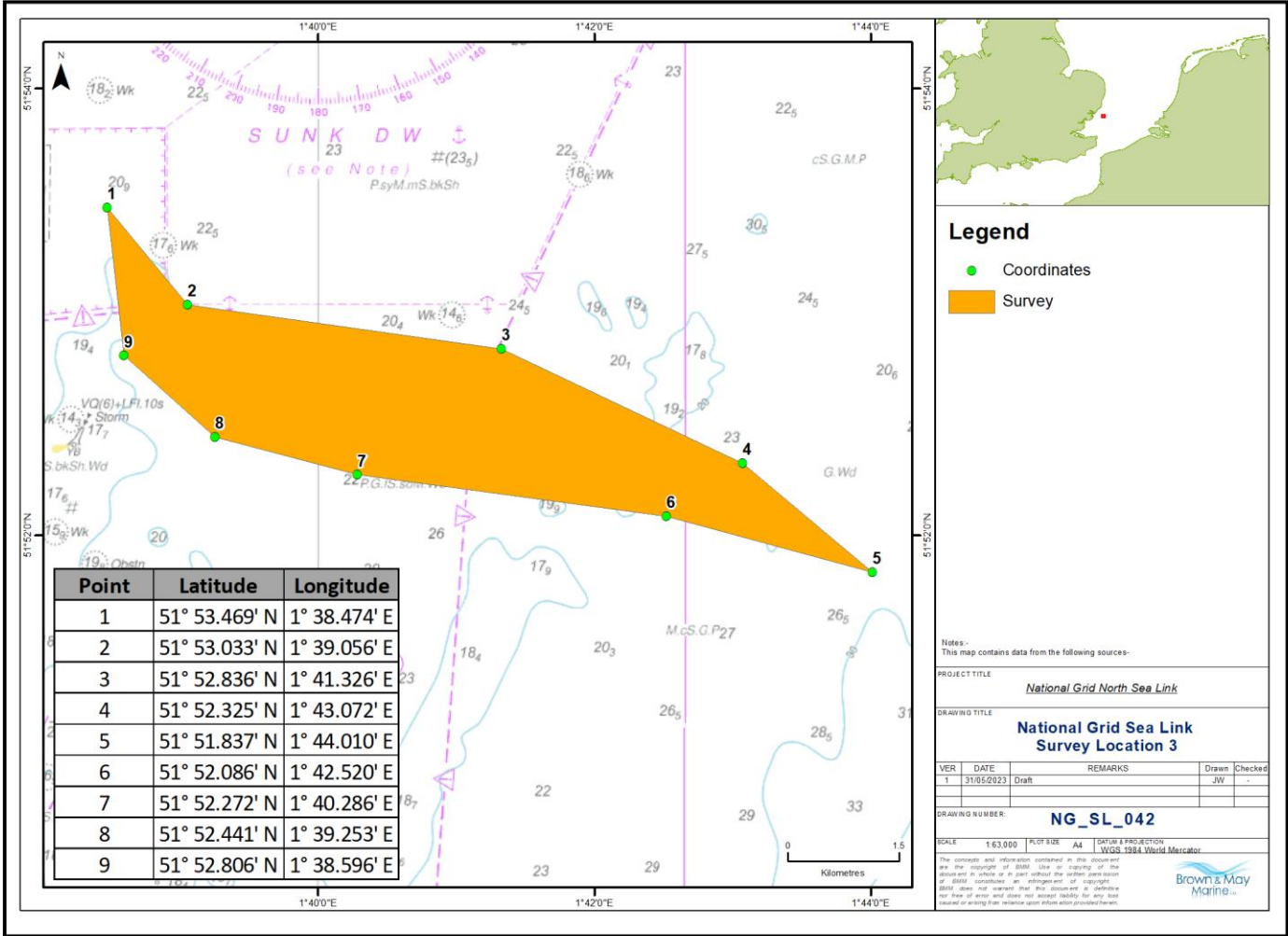


Figure 5 – Survey Area 4

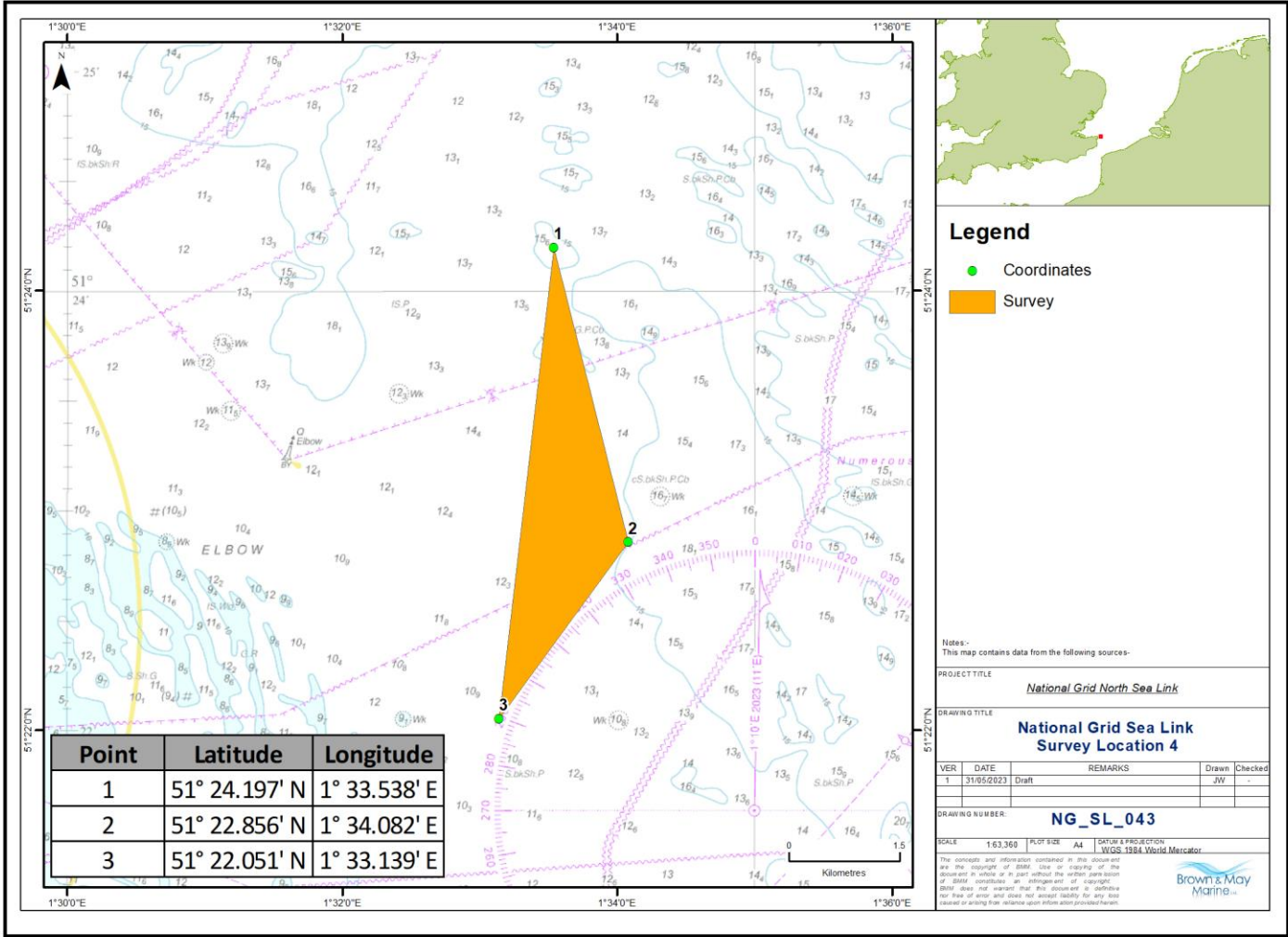


Figure 6 – Survey Area 5

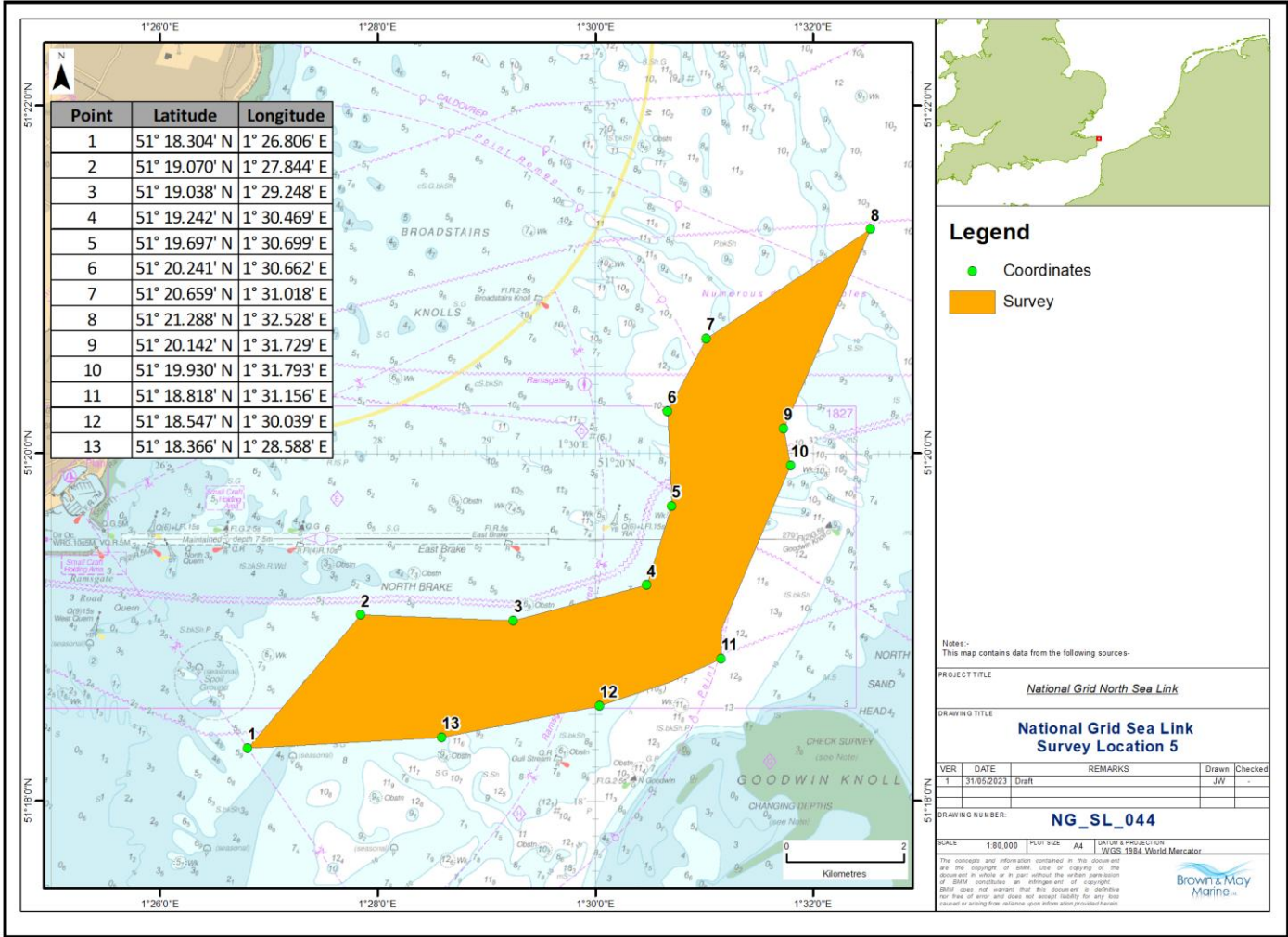



Table 1: Nearshore Survey Vessel Contact Information

Intertidal Vessel – MPSV Shore Possibility (Next Geo Solutions)		
	Call Sign	PC3984
	IMO	N/A
	MMSI	244994287
	Bridge Email	Roeland@shoremonitoring.nl Sean@shoremonitoring.nl
	Bridge Phone Number	+31681280230

Table 2: Offshore Vessel Contact Information

Offshore Vessel – MPSV Shore Presence (Next Geo Solutions)		
	Call Sign	MMHF6
	IMO	N/A
	MMSI	232043907
	Bridge Email	Roeland@shoremonitoring.nl Sean@shoremonitoring.nl
	Bridge Phone Number	+31681280230 +31646015000

Contact Details:

Fisheries Liaison

National Grid have employed the services of Brown & May as Fisheries Liaison representative.

Name: Jonathan Keer

Organisation: Brown and May Marine

Telephone: 07850 604 851

Email: jonathan@brownmay.com

Name: Rachel Malbon

Organisation: Brown and May Marine

Telephone: 07513 824 774

Email: rachel.malbon@brownmay.com

Survey Contractor Contact Details

Name: Lucy Cotton

Organisation: Next Geosolutions

Telephone: 07766541412

Email: l.cotton@nextgeosolutions.com

National Grid

Freephone: 0808 134 9569 (open Monday to Friday 9:00am-5:30pm)

Email: contact@sealink.nationalgrid.com

Website: <https://www.nationalgrid.com/electricity-transmission/network-and-infrastructure/infrastructure-projects/sealink>