

Ørsted - East Coast Operational Assets

Notice to Mariners

Period of Notice: September 2023

Version: 5

Table of Contents

1	Introduction	3
1.1	Subsea Cables.....	4
1.2	Wind Farm Positional Data	5
2	Key Contacts.....	5
3	Notice to Mariners Summary:.....	6
4	Race Bank – Notice to Mariners	7
4.1	Lighting and Marking Status.....	7
4.2	Other Operations.....	7
4.2.1	Main Bearing Exchange	7
4.2.2	LEP Campaign	8
4.2.3	Structural Inspections Below Water	9
5	Westermost Rough – Notice to Mariners	10
5.1	Lighting and Marking Status.....	10
5.2	Other Operations.....	10
5.2.1	Blade LEP campaign.....	10
6	Lincs – Notice to Mariners.....	11
6.1	Lighting and Marking Status.....	11
6.2	Other Operations.....	11
6.2.1	WTG Oil exchange.....	11
6.2.2	Structural Inspections Below Water	11
6.2.3	Lincs E Cardinal Buoy Decommissioning	12
7	Gunfleet Sands – Notice to Mariners	13
7.1	Lighting and Marking Status.....	13
7.2	Other Operations.....	13
7.3	Cable exposure	13
8	Hornsea One – Notice to Mariners.....	13
8.1	Lighting and Marking Status.....	13
8.2	Other Operations.....	15

8.2.1	Main Bearing Exchange	15
8.2.2	Blade Repair	16
9	Hornsea Two – Notice to Mariners.....	17
9.1	Lighting and Marking Status.....	17
9.2	Other Operations.....	17
9.2.1	Structural Inspections Below Water	17

1 Introduction

Ørsted is an offshore wind farm owner and operator with ten operational wind farms in UK waters. Of these ten, the following offshore wind farms are located off the East Coast of England:

- Gunfleet Sands
- Westermost Rough
- Race Bank
- Lincs
- Hornsea One
- Hornsea Two

The purpose of this monthly Notice to Mariners (NtM) is to ensure that mariners are aware of any non-routine operations across the East Coast assets that could pose a risk to other sea users. Safety is paramount to Ørsted and this notice should assist in ensuring that both mariners and the Ørsted operational team can operate safely offshore. This NtM will provide:

- A regular, clear and consistent overview of non-routine operations
- Updates relating to lighting and marking
- Key contact details
- Access to detailed site information and figures
- Clarity on when Safety Zones and recommended safe separation distances are in force or requested



This Notice to Mariners will not provide:

- Information relating to routine maintenance carried out by Crew Transfer Vessels (CTV) or Service Operation Vessels (SOV).
- Any information relating to export cables
- Any information relating to offshore wind farms currently in development, construction or not operated by Ørsted

Subsea Cables

Subsea cables are installed across each offshore wind farm and are marked on the KIS ORCA charts referenced in Section 1.2. Please note the following advice from NP 100 The Mariners Handbook “Every care should be taken to avoid anchoring, trawling, fishing, dredging, drilling, or carrying out any other activity in the vicinity of cables which might damage them.” This warning is repeated on all admiralty charts.

Wind Farm Positional Data

KIS ORCA Awareness Charts (including the layout and coordinates) and Fishing Plotter Files of the offshore assets referenced in this NtM can be found via the KIS ORCA website: <https://kis-orca.org/downloads/> Should mariners require further information or any data in a format that can be used in a plotter or other device, please contact the Company Fisheries Liaison Officer, listed in Section 2 below.

2 Key Contacts

For further information on any of the activities listed within this notice, please use the contact details listed below.

Site	Ørsted Mailbox/ Offshore Coordination	Fisheries Industry Representative
Race Bank	Phone: 07826 943808 Email: rowoffshorec@orsted.com	Ady Woods Phone: 07468 898948 Email: firwoods@hotmail.com
Westermost Rough	Phone: 07867 674941 Email: wmroffshorec@orsted.com	Guy Pasco Phone: 07880 362082 Email: guy@seascopefisheries.co.uk
Lincs	Phone: 07766443319 Email: lincsoffshorec@orsted.com	Ady Woods Phone: 07468 898948 Email: firwoods@hotmail.com
Gunfleet Sands		Merlin Jackson Phone: 07989 520484 Email: merlinjackson@btinternet.com
Hornsea One	Phone: 07775005465 Email: HOWoffshoreC@orsted.com	Nick Garside Phone: 07538 827013 Email: nick.garside@live.co.uk
Hornsea Two	Phone: 07775005465 Email: HOW02offshoreC@orsted.com	Nick Garside Phone: 07538 827013 Email: nick.garside@live.co.uk

Company Fisheries Liaison Officer

The Ørsted Company Fisheries Liaison Officer can be contacted using the details below:

Lee Thompson

Email: LEETH@orsted.com

3 Notice to Mariners Summary:

Site	Lighting and Marking Status	Survey	Jack-Up Vessel	Other Works
Race Bank	OK	None	Yes	Main Bearing Exchange ^{**°} Blade LEP ^{****} Structural Inspections ^{**}
Westernmost Rough	OK	None	None	Blade LEP ^{****} , Structural Inspections ^{**}
Lincs	LS33 Marine Lantern Extinguished	Yes	None	Oil exchange Structural Inspections ^{**}
Gunfleet Sands	OK	None	None	None
Hornsea One	OK	Yes	Yes	Main Bearing Exchange ^{**°} Blade Repair ^{****}
Hornsea Two	T29 – Fog signal constantly sounding J37 Fog Signal inoperative T25 Fog Signal inoperative	None	None	Structural Inspections ^{**}

- * Formal 500m safety zone in place
- ° Licensable activity
- ** 500m safety distance requested
- *** 100m safety distance requested
- **** 250m safety distance requested

Status of lighting & marking is correct at time of issue; any changes will be communicated through an updated version being issued.

4 Race Bank – Notice to Mariners

4.1 Lighting and Marking Status


The lighting and/ or navigational warning systems are currently operational. No planned outages.

4.2 Other Operations

4.2.1 Main Bearing Exchange

Main Bearing Exchange Campaign on Racebank at locations D02, R01 & J05. Campaign is estimated to start Mid-September for 20 days approx.

Mariners must observe an approved exclusion zone of 500m whenever Wind Enterprise is attached to D02, R01 and J05. A minimum separation distance of 500m is also requested when the vessel is observed manoeuvring into position.

General Information		Vessel Picture
Name	Wind Enterprise	
Flag	Denmark	
Year Built	2011	
MMSI Number	219370000	
Call Sign	OZTU2	
Vessel Contact Details		
Bridge	+45 29 81 58 85	
Party Chief		
Email	Master.windenterprise@ziton.eu	

4.2.2 LEP Campaign

Start date: 28-08-2023


Duration of work scope: Estimate to end of September 2023

Description of work: LEP Campaign

Is this a licensed activity: No

Mariners are requested to remain a distance of 200m from the towers when it is observed undertaking Rope Access works and where the vessel is pushed against a WTG.

General Information		Vessel Picture
Name	Admiral P	
Flag	UK	
Year Built	2012	
MMSI Number	235094496	
Call Sign	2FVD7	
Vessel Contact Details		
Bridge	07398 120420	
Party Chief		
Email	admiralp@offshoreturbineservices.co.uk	




WTG ID	Degrees, Decimal Minutes	
	Latitude	Longitude
A05	0.771711	53.30361
D02	0.811108	53.328453
D03	0.82307	53.325066
D04	0.814847	53.318757
D06	0.812835	53.301449
D07	0.807669	53.284227
F05	0.832343	53.259126
G01	0.844258	53.289039
G06	0.83976	53.246736
H02	0.856459	53.277301
K06	0.877683	53.235235
K07	0.879027	53.22714
L01	0.891077	53.274552
L03	0.893878	53.254232
R01	0.924704	53.25542

4.2.3 Structural Inspections Below Water

Structural Inspection Below Water, using ROV from Jif Marlin on DP mode. Expected to start in August and will work between WMR, ROW, HOW02 and LINCS windfarm for circa 35days

General Information		Vessel Picture
Name	Jif Marlin	
Flag	France	
Year Built	2017	
MMSI Number	228093900	
Call Sign	FJYT	
Vessel Contact Details		
Bridge	+33 6 99 73 04 11	
Party Chief	+44 (0) 776 949 3413	
Email	JifMarlin@jifmar.net	

Coordinates



Race Bank		
ID	Latitude	Longitude
A06	53.2960577	0.771226337
B04	53.3042232	0.784463982
B05	53.296783	0.783038112
B07	53.2817815	0.781874679
C06	53.2960883	0.796057968
D05	53.3095906	0.813664252
D06	53.3014472	0.812829469
E09	53.2482625	0.815637547
G04	53.263513	0.843871559
G06	53.2467329	0.83976746
J04	53.2465649	0.865565971
M03	53.2510328	0.907075612
N02	53.2414367	0.912642856

5 Westermost Rough – Notice to Mariners

5.1 Lighting and Marking Status

The lighting and/ or navigational warning systems are currently operational. No planned outages.


5.2 Other Operations


5.2.1 Blade LEP campaign

In mid-April we are starting an LEP campaign which we anticipate will take between 3-4 months. CTV's will support the remainder of the project.

Mariners are requested to remain a distance of 200m from the towers when it is observed undertaking Rope Access works and where the vessel is pushed against a WTG.

Vessel Information

General Information		Vessel Picture
Name	Iceni Defiant	
Flag	UK	
Year Built	2010	
MMSI Number	235090838	
Call Sign	2FF06	
Vessel Contact Details		
Bridge	+44 7809 727 397	
Email	defiant@turnericeni.com	

General Information		Vessel Picture
Name	Iceni Courage	
Flag	UK	
Year Built	2011 – refit in 2020	
MMSI Number	235085499	
Call Sign	2EIU7	
Vessel Contact Details		
Bridge	+44 7715677293	
Party Chief		
Email	courage@turnericeni.com	

6 Lincs – Notice to Mariners

6.1 Lighting and Marking Status


LS33 Marine lantern Extinguished. We will investigate and repair this as soon as possible.

6.2 Other Operations

6.2.1 WTG Oil exchange


On the 1st May, the vessel MMS Superior will be on site conducting an oil exchange. All 75 locations will be visited with the scope anticipated on taking just over 3 months.

Vessel information

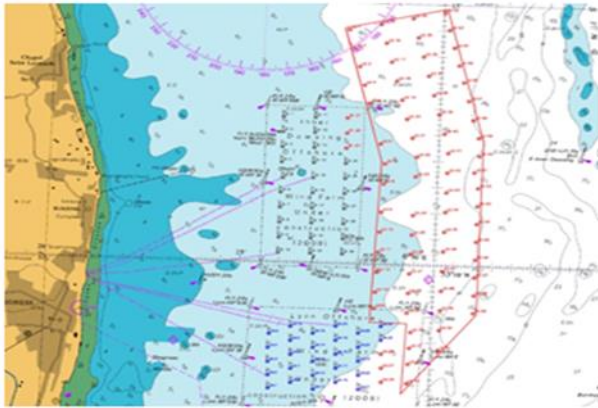
General Information		Vessel Picture
Name	MMS Superior	
Flag	UK	
Year Built	2019	
MMSI Number	232024742	
Call Sign	MGFO9	
Vessel Contact Details		
Bridge	07471752805	
Party Chief		
Email	mmssuperior@mms-offshore.co.uk	

6.2.2 Structural Inspections Below Water

Structural Inspection Below Water, using ROV from Jif Marlin on DP mode. Expected to start in August and will work between WMR, ROW, HOW01 and LINCS windfarm for circa 35days

General Information		Vessel Picture
Name	Jif Marlin	
Flag	France	
Year Built	2017	
MMSI Number	228093900	
Call Sign	FJYT	
Vessel Contact Details		
Bridge	+33 6 99 73 04 11	
Party Chief	+44 (0) 776 949 3413	
Email	JifMarlin@jifmar.net	

Coordinates



Lincs			
ID	Type	Latitude	Longitude
LS51 (A51)	WTG	53° 08.365	00° 30.183
LS44 (B44)	WTG	53° 11.016	00° 30.226
LS66 (B66)	WTG	53° 10.117	00° 31.047
LS38 (D38)	WTG	53° 13.254	00° 29.814
LS54 (D54)	WTG	53° 14.170	00° 30.293
LS03 (E03)	WTG	53° 13.772	00° 27.866
LS18 (E18)	WTG	53° 13.511	00° 28.840
LS08 (F08)	WTG	53° 11.532	00° 28.604
LS20 (F20)	WTG	53° 12.786	00° 29.145
LS09 (G09)	WTG	53° 10.992	00° 28.576
LS26 (G26)	WTG	53° 10.192	00° 29.377
LS74 (H74)	WTG	53° 07.993	00° 28.738
LS75 (H75)	WTG	53° 07.726	00° 28.754

6.2.3 Lincs E Cardinal Buoy Decommissioning

Removal and decommissioning of the E Cardinal Buoy, will be carried out by the Jif Marlin 26th September approx. Works expected to last one day.

General Information		Vessel Picture
Name	Jif Marlin	
Flag	France	
Year Built	2017	
MMSI Number	228093900	
Call Sign	FJYT	
Vessel Contact Details		
Bridge	+33 6 99 73 04 11	
Party Chief	+44 (0) 776 949 3413	
Email	JifMarlin@jifmar.net	



7 Gunfleet Sands – Notice to Mariners

7.1 Lighting and Marking Status

The lighting and/ or navigational warning systems are currently operational. No planned outages.

7.2 Other Operations

7.3 Cable exposure

There are subsea cables currently exposed as shown on the below chart and coordinates

WGS84 Degrees, decimal Minutes						
ID	ArrayCableID	Length_m	StartCoord_Longitude	StartCoord_Latitude	EndCoord_Longitude	EndCoord_Latitude
GFS_MBES_TO_01-UnidentifiedOther	F08-F09	13.4	1° 17.383' E	51° 44.721' N	1° 17.396' E	51° 44.723' N
GFS_MBES_TO_02-CableExposure	F08-F09	790.93	1° 16.787' E	51° 44.486' N	1° 17.376' E	51° 44.718' N
GFS_MBES_TO_03-CableExposure	F07-F08	533.19	1° 16.562' E	51° 44.401' N	1° 16.726' E	51° 44.466' N
GFS_MBES_TO_04-CableExposure	F06-F07	25.25	1° 16.059' E	51° 44.203' N	1° 16.075' E	51° 44.210' N

8 Hornsea One – Notice to Mariners

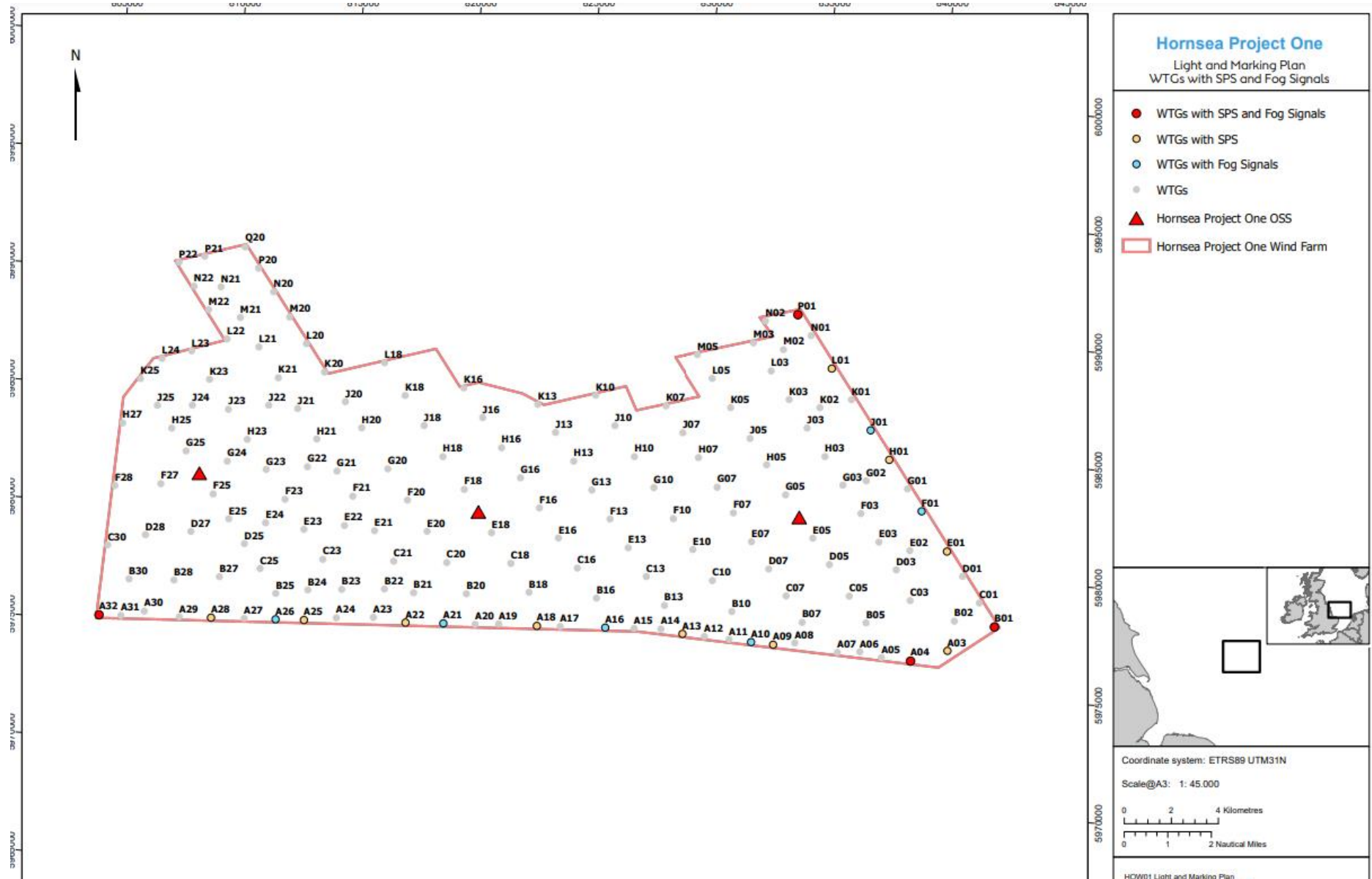
8.1 Lighting and Marking Status

The lighting and/ or navigational warning systems are currently operational. No planned outages

Mariners are advised that the marine navigation lighting and foghorns on turbines situated on the Hornsea Project One / Two adjoining perimeter have now been extinguished. Marine navigation lighting will now alight the combined perimeter of Hornsea Project One and Two.

Please see the table below showing the locations where the foghorns/marine navigation lighting has been discontinued (indicated with an X)

Turbine	Marine Navigation Lights	Foghorns
K25	X	
Q20	X	X
C30	X	X
H27	X	X
P22	X	X
L20		X
K16		X
K10		X
M05		X



8.2 Other Operations

8.2.1 Main Bearing Exchange

Main Bearing Exchange Campaign on Hornsea 01 at C23, M22 & A22. Campaign is estimated to start Early October for 20 days approx. A 500m exclusion zone will be required whilst the Jack Up vessel is in position at the turbines and whilst jacking up and down.

Mariners must observe an approved exclusion zone of 500m whenever Wind Enterprise is attached to C23, M22 and A22. A minimum separation distance of 500m is also requested when the vessel is observed manoeuvring into position.

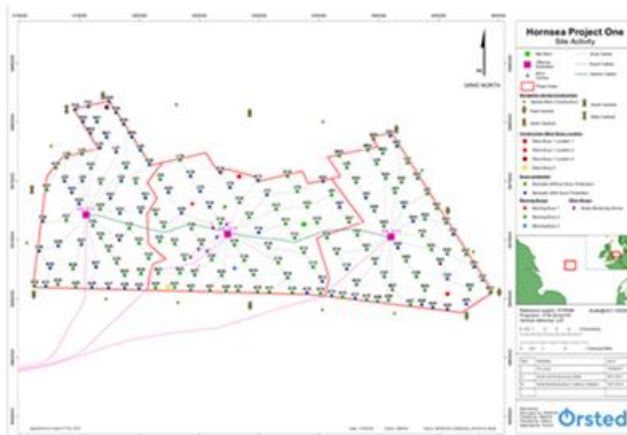
General Information		Vessel Picture
Name	Wind Enterprise	
Flag	Denmark	
Year Built	2011	
MMSI Number	219370000	
Call Sign	OZTU2	
Vessel Contact Details		
Bridge	+45 29 81 58 85	
Email	Master.windenterprise@ziton.eu	

WTG ID	Degrees, Decimal Minutes	
	Latitude	Longitude
A22	53° 50' 5.059" N	01° 50' 57.533 E
C23	53° 51' 30.170" N	01° 47' 42.830 E
M22	53° 57' 11.249" N	01° 43' 6.483 E

8.2.2 Blade Repair

Blade repairs campaign on Hornsea 01 at A23, B16, K03. Campaign is expected to last between 7-14 Days.

Mariners are requested to remain a distance of 200m from the towers when it is observed undertaking Rope Access works and where the vessel is pushed against a WTG.



WTG ID	Degrees, Decimal Minutes	
	Latitude	Longitude
A23	53°50'11.478N	01°49' 42.519' E
B16	53°50' 42.731N	01°58' 20.716'E
K03	53°55' 19.794N	02°5' 42.840'E

9 Hornsea Two – Notice to Mariners

9.1 Lighting and Marking Status

T29 fog signal is constantly sounding, this will be investigated at the earliest opportunity.

J37 fog signal is inoperative.

T25 fog signal is inoperative

9.2 Other Operations

9.2.1 Structural Inspections Below Water

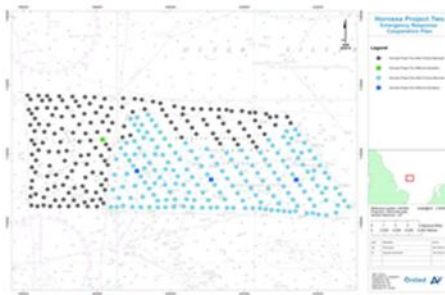
Structural Inspection Below Water, using ROV from Jif Marlin on DP mode. Expected to start in August and will work between WMR, ROW, HOW01 and LINCS windfarm for circa 35days

General Information		Vessel Picture
Name	Jif Marlin	
Flag	France	
Year Built	2017	
MMSI Number	228093900	
Call Sign	FJYT	
Vessel Contact Details		
Bridge	+33 6 99 73 04 11	
Party Chief	+44 (0) 776 949 3413	
Email	JifMarlin@jifmar.net	

Depending on the work scope you may need to provide a Map & Coordinates showing location of work.

GIS Map example

Coordinates



Hornsea			
ID	Type	Longitude	Latitude
H31	WTG	001° 34' 39.577" E	53° 54' 52.637" N
P13	WTG	001° 53' 6.314" E	53° 57' 43.830" N
OSS1	OSS	001° 37' 50.474" E	53° 56' 21.869" N
RCS1	RCS	000° 55' 56.151" E	53° 38' 0.138" N