

Eastern Inshore Fisheries and Conservation Authority

Local Notice to Mariners EIFCA 2 - 2024

Issued – 03/05/2024

East Coast of England – North Norfolk Coast

This notice serves as an update and replacement of the previous notice (LNTM 10-2023).

Marker buoys will be deployed to demark the northern corners of three areas voluntarily closed to potting between Sheringham and Cromer along the North Norfolk coast (see previous LNTM 09-2023). Subject to suitable weather, works will commence from the **10th May 2024** to deploy six buoys (Table 1). Please note that deployment of the 5th buoy (East Runton – West) will be dependent on successfully micro siting the area first to ensure it is not placed on rugged chalk. If a suitable area cannot be located the buoy will not be deployed

Works will be completed by Eastern IFCA using RV *Three Counties*. The vessel can be contacted on channel 16.

We request that all fishing gear is removed within a 50m radius of each deployment position (Figure 1) prior to the commencement of works, date specified in Table 1. This is to ensure that operations can be carried out safely. If you are unable to move any fishing gear from these areas before this date, please contact us to let us know as soon as possible. Once buoys have been deployed a subsequent Local Notice to Mariners will be issued.

Table 1: Buoy deployment positions and date works will commence.

Buoy location		WGS 84		Commencement of works
		Latitude	Longitude	
1	Sheringham - West Buoy	52° 57'.049 N	01° 13'.073 E	10 th May 2024
2	Sheringham - East Buoy	52° 57'.035 N'	01° 13'.277 E	10 th May 2024
3	West Runton – West Buoy	52° 56'.936 N	01° 14'.571 E	10 th May 2024
4	West Runton – East Buoy	52° 56'.918 N	01° 14'.774 E	10 th May 2024
5	East Runton – West Buoy*	52° 56.547'N	01° 16.720 'E	10 th May 2024
6	East Runton – East Buoy	52° 56'.518N	01° 16'.920 E	10 th May 2024

*Note: note that deployment of the 5th buoy will be dependent on successfully micro siting the area first to ensure it is not placed on rugged chalk. If a suitable area cannot be located the buoy will not be deployed.

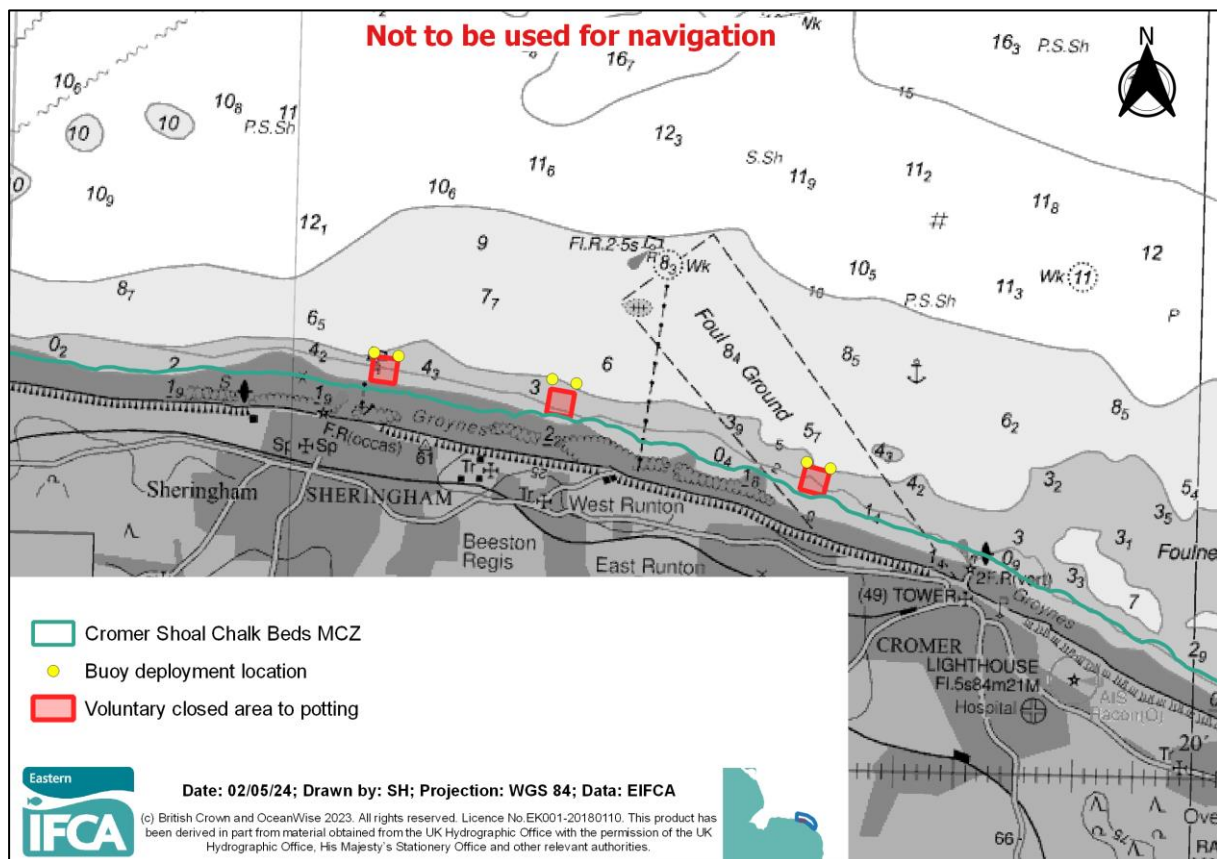


Figure 1 Positions of voluntarily closed areas within Cromer Shoal Chalk Bed MCZ. Showing positions of special marker buoys marking northern corners.

These buoys will be yellow marker buoys, with radar reflectors and a light showing a pattern of Fl (5) Y 20s. The buoys will be 0.8m wide and roughly 1m tall out of the water. They will display the Eastern IFCA logo and telephone number along with a message stating “AREA CLOSED TO POTTING”. See figure 2 for a model image of the buoy.

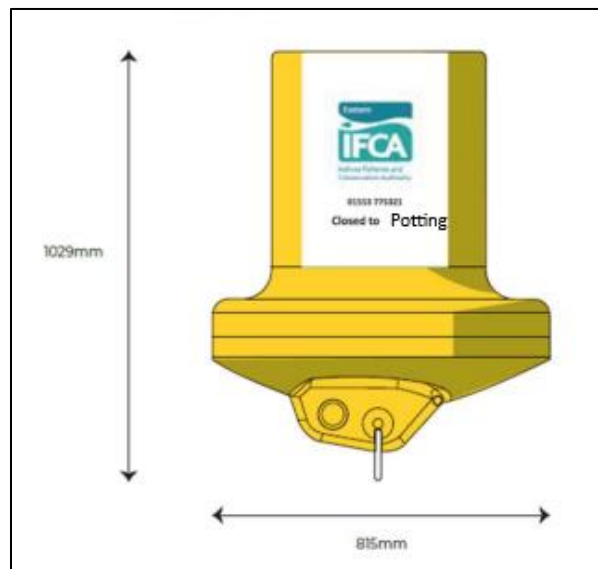


Figure 2 Model image of the buoys to be used to mark the northern edge of the voluntarily closed areas.

Works to install the buoys will commence from **10th May 2024** and the buoys shall remain in place until the end of November 2026, for the duration of the voluntary closure.

Further information about the project and the closed areas is available on our website:

<https://www.eastern-ifca.gov.uk/cromer-shoal-chalk-beds-mcz/cromer-shoal-chalk-beds-mcz-natural-disturbance-study/> .

If you require more information regarding Eastern IFCA planned surveys or works, please contact our office:

mail@eastern-ifca.gov.uk

01553 775321

Sincerely,

Jon Butler
Operations Manager