

Eastern Inshore Fisheries and Conservation Authority

Local Notice to Mariners EIFCA 5 - 2024

Issued – 01/10/2024

East Coast of England – North Norfolk Coast

This notice serves as an update and replacement of the previous notice (LNTM 4 - 2024).

Yellow marker buoys have been deployed to demark the northern corners of three areas voluntarily closed to potting between Sheringham and Cromer along the North Norfolk coast (see previous LNTM 09-2023) (Table 1).

Please note that we are aware that some of the buoys are currently off station. This will be corrected as soon as weather permits. The buoys will remain in place until winter, when weather conditions deteriorate. A further LNTM will be issued when the buoys are taken off station.

Further information about the project and the closed areas is available on our website:
<https://www.eastern-ifca.gov.uk/cromer-shoal-chalk-beds-mcz/cromer-shoal-chalk-beds-mcz-natural-disturbance-study/>

If you require more information regarding Eastern IFCA planned surveys or works, please contact our office:

mail@eastern-ifca.gov.uk

01553 775321

Yours Sincerely

Jon Butler
Deputy Chief Officer

Table 1: Buoy deployment positions and date works will commence.

Buoy location		WGS 84	
		Latitude	Longitude
1	Sheringham - West Buoy	52° 57'.031 N	01° 13'.070 E
2	Sheringham - East Buoy	52° 57'.017 N'	01° 13'.274 E
3	West Runton – West Buoy	52° 56'.887 N	01° 14'.558 E
4	West Runton – East Buoy	52° 56'.868 N	01° 14'.761 E
5	East Runton – West Buoy	52° 56'.530N	01° 16'.713 E
6	East Runton – East Buoy	52° 56'.501N	01° 16'.913 E

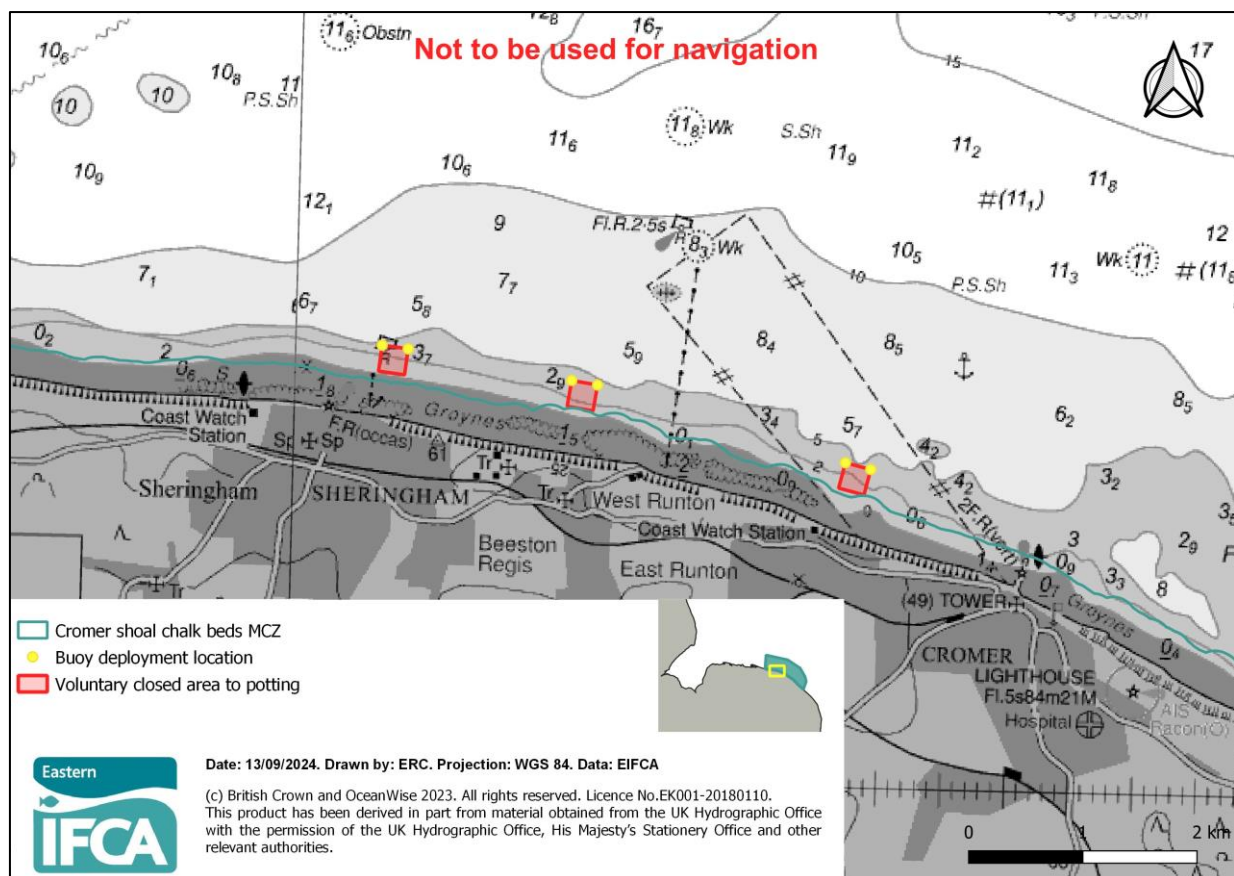


Figure 1 Positions of voluntarily closed areas within Cromer Shoal Chalk Bed MCZ & positions of marker buoys marking northern corners.