

Eastern IFCA Consultation: Cromer MCZ Interim Management Measures



To support Adaptive Risk Management and reduce the risk of precautionary closures, Eastern IFCA is considering introducing the two management measures below.

Consultation closes: **20 March 2025**



1

Mandatory Closure of the Natural Disturbance Study Areas

The Closures would utilise Byelaw 8: Temporary Closure of Shellfish Fisheries

The Closures would be over the 3 areas currently under voluntary closures

Potting would be entirely prohibited within these areas

2

Requirement for Positional Data

- This information would be required under Byelaw 11: Development of Shellfish Fisheries
- Anyone commercially potting for crab or lobster in the MCZ would be required to the following data at regular intervals (at least every three minutes):
 - Vessel position
 - Vessel heading
 - Vessel speed

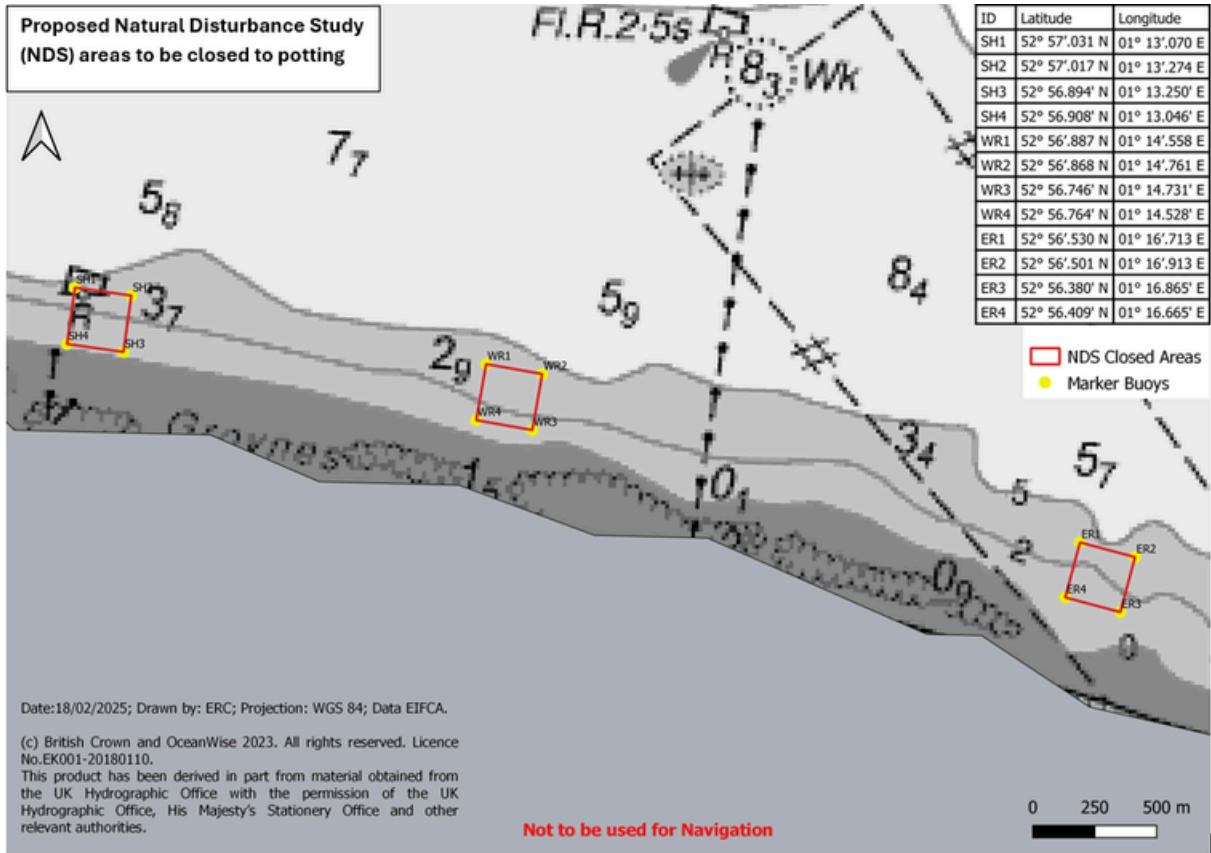
- To support providing this data, Eastern IFCA would provide industry members with trackers (free of charge)
- Alternative methods of providing the information, such as through i-VMS, would be accepted

Please see overleaf for charts of the proposed areas

To respond to this consultation, please contact the office. Please see our website for further details

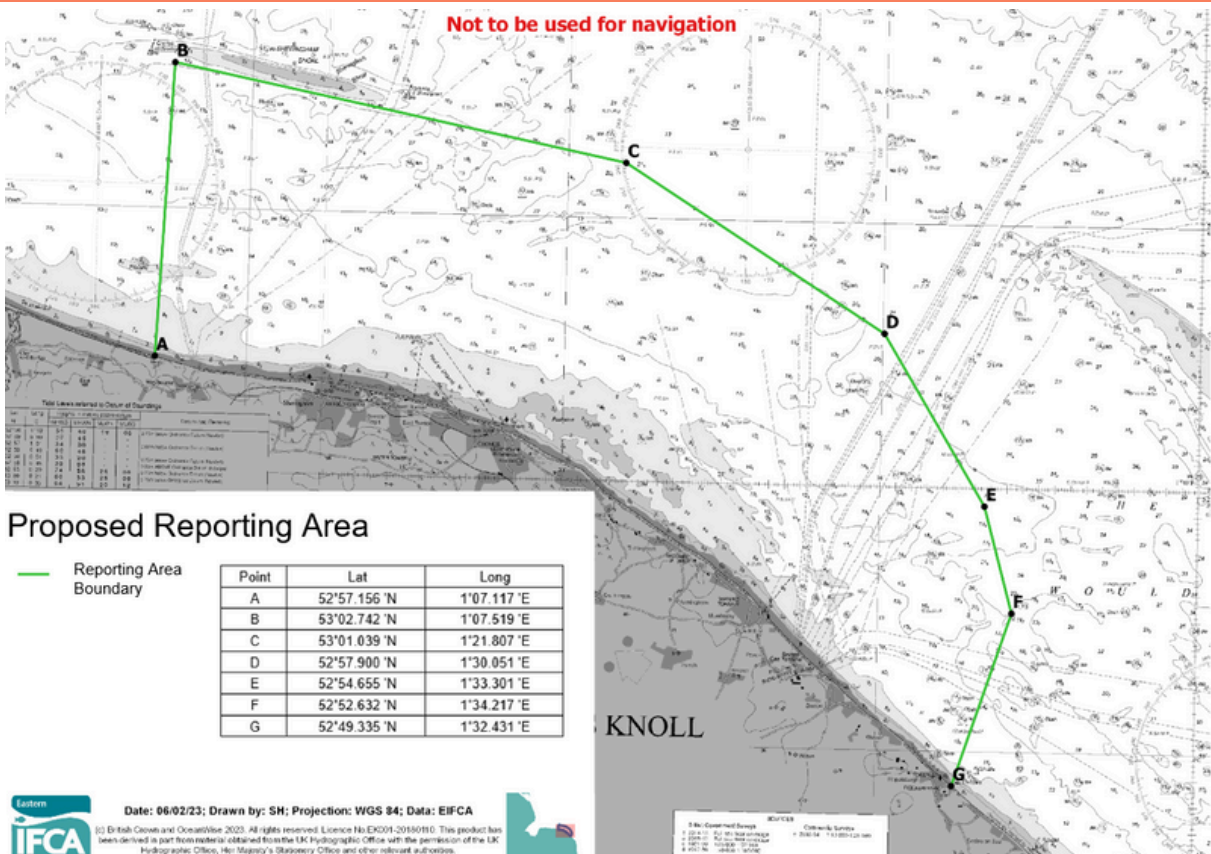
1

Chart Showing Proposed Mandatory Closures



2

Chart Showing Proposed Reporting Area for Positional Data



To respond to this consultation, please contact the office. Please see our website for further details