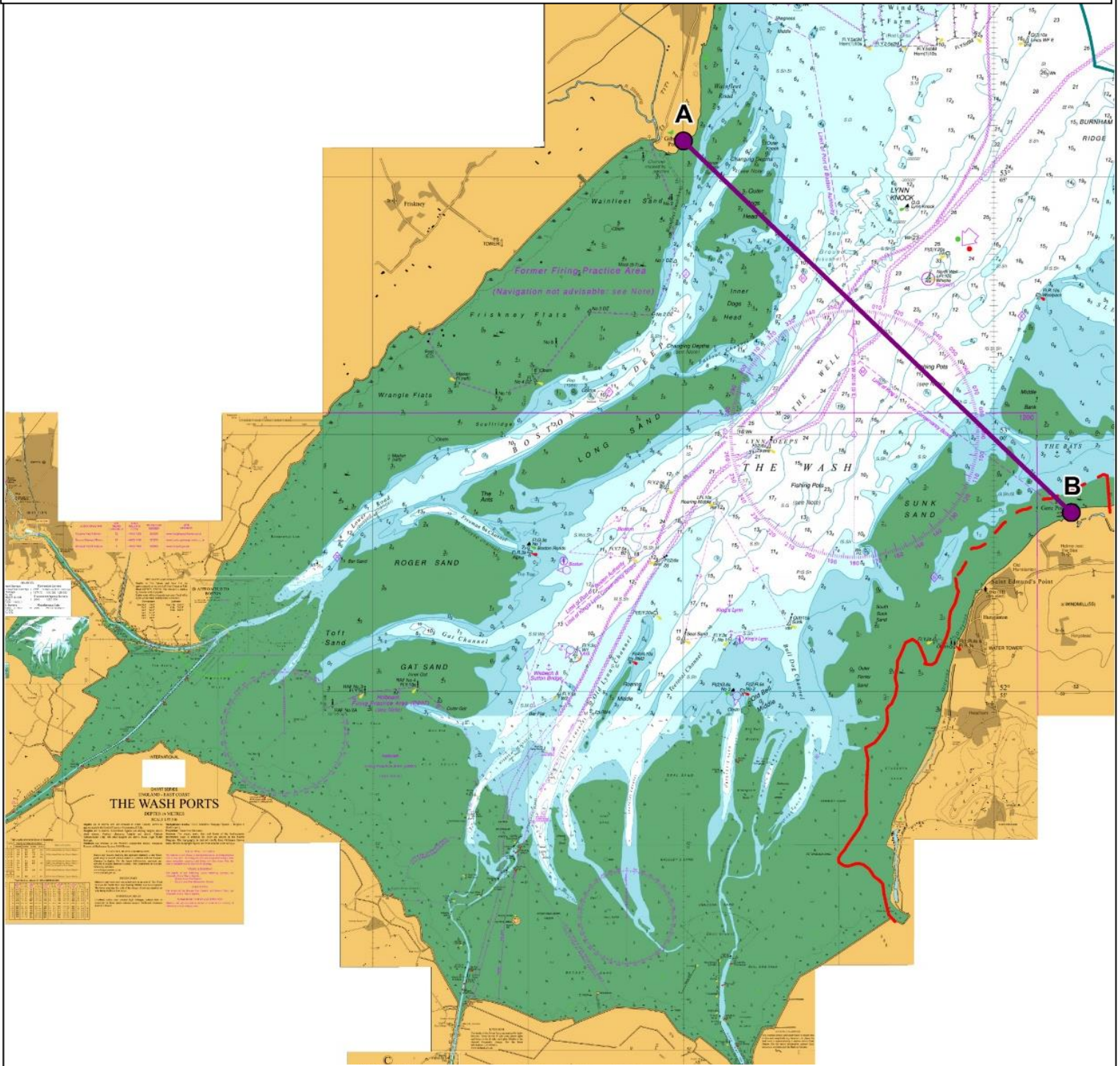


Figure 1 – chart indicating the area of sea referred to in this byelaw as The Wash



Point	Latitude	Longitude
A	53° 05.70' N	00° 19.89' E
B	52° 58.55' N	00° 32.27' E

Not to be used for navigation

(c) British Crown and OceanWise 2021. All rights reserved. Licence No.EK001-20180110.  
 This product has been derived in part from material obtained from the UK Hydrographic Office with the permission of the UK Hydrographic Office, Her Majesty's Stationery Office and other relevant authorities.

**Wash Cockle and Mussel Byelaw 2021**

- — — Fixed le Strange Boundary
- - - - - le Strange Boundary which will move in accordance with any movement of lowest astronomical tide
- — — 'The Wash' seaward Boundary
- — — Eastern IFCA District boundary



Date:15/11/21 Drawn by:SC  
 Projection: Lat Long WSG84  
 Source data - EIFCA:  
 Eastern IFCA boundary  
 The Wash Several Order  
 High Court Ref. HC07C02289:  
 Le Strange boundary

2021\_11\_15\_The\_Wash\_Cockle&Mussel\_Byelaw.wor