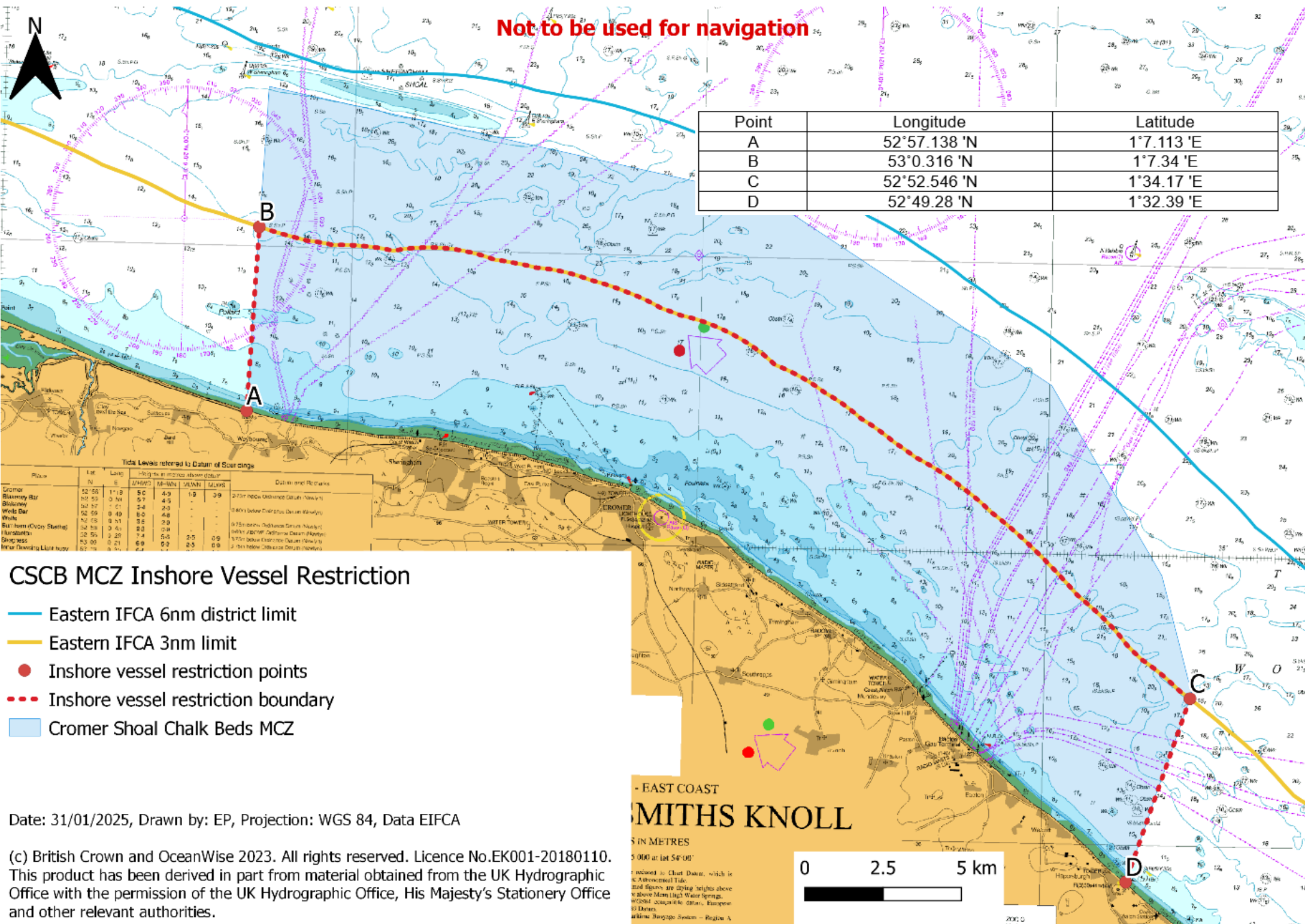


Not to be used for navigation

Point	Longitude	Latitude
A	52°57.138 'N	1°7.113 'E
B	53°0.316 'N	1°7.34 'E
C	52°52.546 'N	1°34.17 'E
D	52°49.28 'N	1°32.39 'E



CSCB MCZ Inshore Vessel Restriction

- Eastern IFCA 6nm district limit
- Eastern IFCA 3nm limit
- Inshore vessel restriction points
- - - Inshore vessel restriction boundary
- Cromer Shoal Chalk Beds MCZ

Date: 31/01/2025, Drawn by: EP, Projection: WGS 84, Data EIFCA

(c) British Crown and OceanWise 2023. All rights reserved. Licence No.EK001-20180110. This product has been derived in part from material obtained from the UK Hydrographic Office with the permission of the UK Hydrographic Office, His Majesty's Stationery Office and other relevant authorities.

Place	Lat	Long	MHW	M-LWN	M-LWN	M-LWS	Datum and Remarks
Cromer	52 55	1 18	5.0	4.9	1.9	3.9	2.7m new datum datum (Newlyn)
Blaikney Bar	52 55	0 34	5.7	4.5	-	-	2.4m below datum datum (Newlyn)
Wells Bar	52 57	0 01	4.4	3.3	-	-	2.4m below datum datum (Newlyn)
Wells Bar	52 59	0 49	6.0	4.8	-	-	2.4m below datum datum (Newlyn)
Butt Farm (Covey Street)	52 58	0 51	3.5	2.9	-	-	1.75m below datum datum (Newlyn)
Harbourside	52 58	0 45	2.3	2.0	-	-	1.75m below datum datum (Newlyn)
Shipyard	52 59	0 28	7.4	5.5	2.5	0.5	1.75m below datum datum (Newlyn)
Marine Diving Light buoy	52 59	0 21	6.9	5.2	2.5	0.9	1.75m below datum datum (Newlyn)

- EAST COAST
MITHS KNOLL
 5 IN METRES
 5 000 at lat 54° 00'

Published by Chart Desk, which is a Approved Tide and Slopers are giving heights above Mean High Water Springs, WGS84 datum, European Datum, British Datum, or other datum as indicated on the chart.

0 2.5 5 km