



Hornsea Three

Notice to Mariners – Weekly Construction Update

Ref: 09314456_D

Date: 23/05/2025

1 Introduction to proposed activities

This notice provides an overview of the upcoming offshore construction activities associated with Hornsea Project Three Offshore Wind Farm ('Hornsea Three'), located within the UK Sector of the North Sea. It will be updated weekly to provide insights into the project's activities throughout the construction phase.

Geophysical Investigations and Drop-Down Camera Survey:

(Marine Licence: EXE/2025/00095)

Mariners are advised that Orsted will be commencing a Geophysical and Drop-Down Camera survey for the purpose of seabed characteristic investigation for the Hornsea Three Array Area.

The survey vessel, Ocean Endeavour, is anticipated to transit from the Hornsea Project Four Offshore Wind Farm Consented Area. The likely start date is 28th May 2025. The works will last for approximately four days, excluding weather contingency. The geophysical survey will include Multibeam Echosounder (MBES)/Backscatter, Side Scan Sonar (SSS), Magnetometer (MAG), and an Ultra-short baseline (USBL) acoustic positioning system will be used to calculate the position of underwater targets.

Bell-Mouth Installation:

(Marine Licence: DCO/2016/00001)

Mariners are advised that Orsted will be commencing a Bell-Mouth installation campaign for the Hornsea Three Export Cable offshore Weybourne. Blanking plates will be removed from the 4 Horizontal Directional Drilling ducts and replaced with 4 Bell-Mouths. The dive support vessel, C-Odyssey and (Line Boat Defender 1), and supporting CRC Gladiator will both mobilise from Great Yarmouth on the 11th June 2025 and will arrive on site 12th June 2025. The works will last for approximately 16-20 days, excluding weather contingency.

Orsted request that fishing gear is removed from the area of works, shown in [Figure 2](#).

2 Area of operations

The areas in which the works will be conducted are shown in **Figure 1** and **Figure 2** below. Full coordinate list and plotter files can be provided upon request from Fisheries Liaison personnel, as listed in **Section 5**.

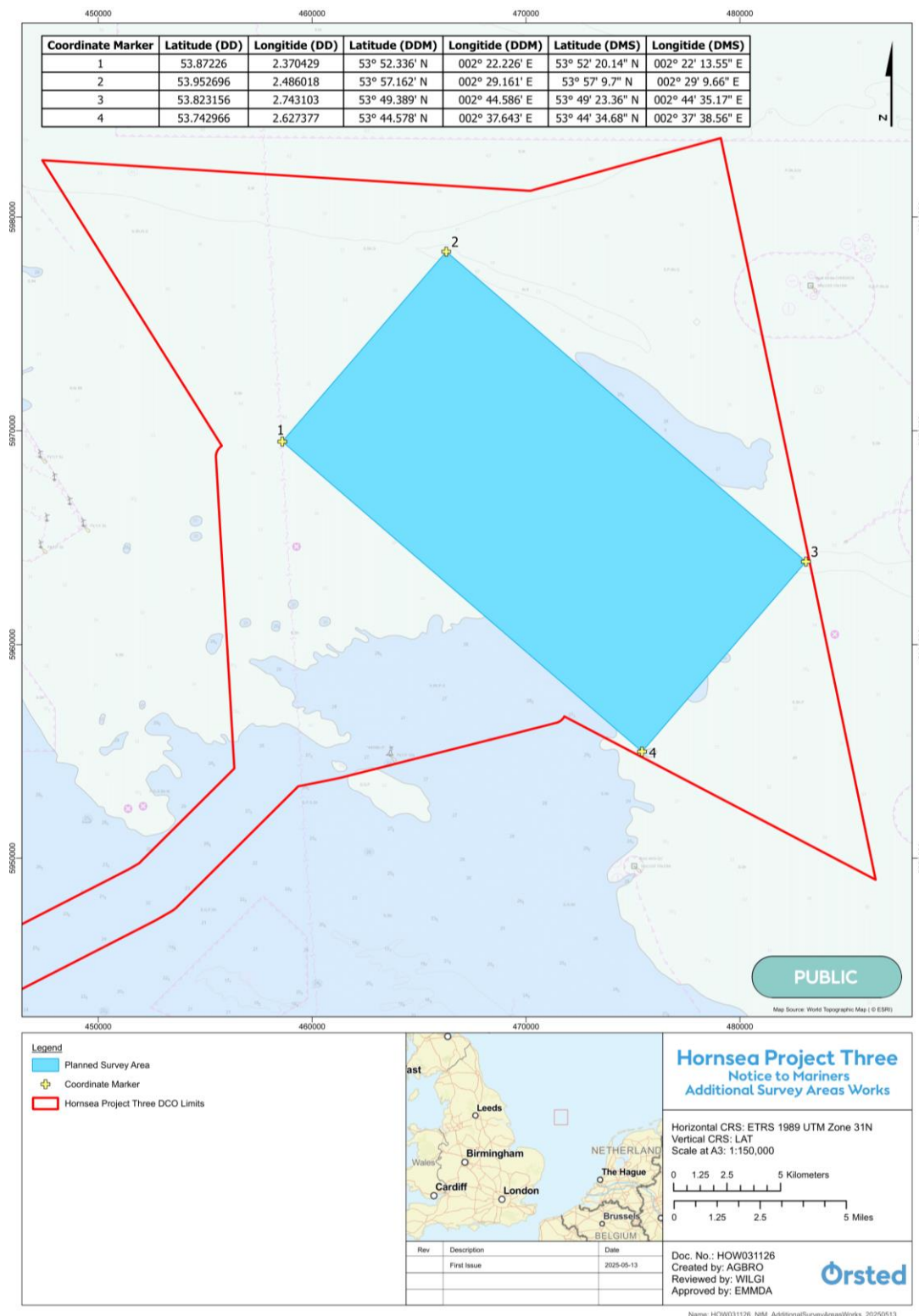


Figure 1: Areas of Works - Geophysical Investigations and Drop-down Camera Survey

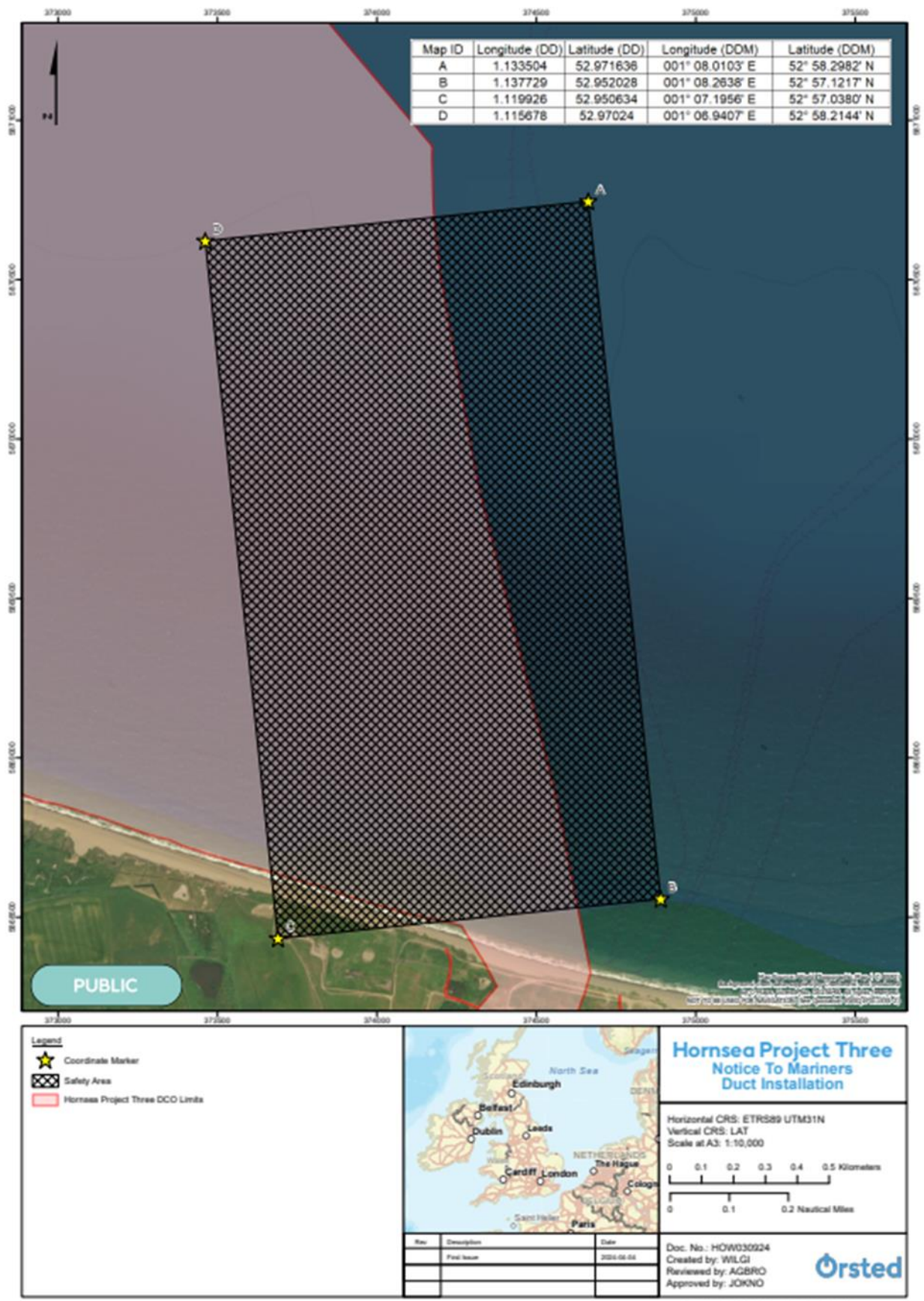


Figure 2: Areas of Works – Bell-Mouth Installation

3 Safety

When works commence, the vessels will maintain a listening watch on VHF Channels 12 and 16 while within the relevant port authority area and will actively transmit an AIS signal.

Note that the vessels when under work will have limited manoeuvrability and it is therefore requested that all vessels operating near the works vessels maintain a safe distance (at least 500m) and pass at minimum speed.

Note that the Contractor will be installing the Bell-Mouth using Diver intervention.

It is requested that anybody having knowledge of any potential objects submerged or moored on the seabed within the area presented in [Figure 1](#) that could be damaged or form a hazard to the works vessel advises the Hornsea Three Onshore Fisheries Liaison of its position and nature.

4 Immediate contacts

Please contact the vessel on VHF Channel 12 and 16 (or by the details provided in [Section 7](#) of this notice) in the first instance.

If this is not possible, please contact Orsted coordination at the details below:

Marine and Helicopter Coordination Centre (MHCC)	24/7 contact	
	Tel: +44 (0) 2078 111 170	E-mail: MHCC_DEV_ADM@orsted.com

5 Fisheries Liaison

An Offshore Fisheries Liaison Officer (OFLO) will not be present on board the works vessels.

Fisheries liaison is provided by Ady Woods (Hornsea Three Fishing Industry Representative), and Rhys Kibble, who can be contacted on:

Fishing Industry Representative	Ady Woods	
	Tel: +44 (0)7468 898948	
Commercial Fisheries Advisor	Rhys Kibble	
	Tel: +44 (0) 7775 613586	E-mail : rhys.kibble@brownmay.com

Out of standard office hours (Monday-Friday 9am-5pm) please contact the vessel, as detailed in [Section 7](#), in the first instance.

6 Oil & Gas, Telecoms and Electricity Cable Operators

For those operators already in dialogue with Hornsea Three and other operators wishing to make general enquiries about the works, please contact Rob Holtom:

Project Manager (Third Party Offshore Crossings and Proximity)	Rob Holtom	
	Tel: +44 (0) 7734 809469	E-mail : xroom@orsted.com

Out of standard office hours (Monday-Friday 9am-5pm) please contact the vessel, as detailed in [Section 7](#) in the first instance.


7 Vessel information

Contact can be made directly with the vessel, where necessary, using the contact details listed below.


The Geophysical and Drop-Down Camera Survey will be conducted by the vessel detailed below:

Vessel Details – Ocean Endeavour	
	
Vessel Type / Function	Survey Vessel
Vessel email	Master@endeavour.gardline.co.uk opm@endeavour.gardline.co.uk
Masters Mobile	+44 (0) 7799 773 422
Party Chief Mobile	+44 (0) 20 3991 2041
Call Sign	GAAL
MMSI	233694000
IMO	8402008

The Bell-Mouth Installation will be conducted by the vessels detailed below:

Vessel Details – C-Odyssey	
	
Vessel Type / Function	Multi cat support vessel
Vessel Email	C-Odyssey@leaskmarine.com
Masters Mobile	+44(0) 7718424491
Call Sign	2ETW7
MMSI	235088132
IMO	9636307

Vessel Details – CRC Gladiator	
	
Vessel Type / Function	CTV crew change vessel (6 pax)
Vessel Email	crcgladiator@commercialribcharter.co.uk
Masters Mobile	N/A
Call Sign	2IUR3
MMSI	235112943
IMO	N/A

Vessel Details – Defender 1	
	
Vessel Type / Function	Rib
Vessel Email	c-odyssey@leaskmarine.com
Masters Mobile	+44 771824491
Call Sign	MITY2
MMSI	232034024
IMO	N/A