

Wash Cockle and Mussel Byelaw 2021: Hand-Work cockle Fishery Permit Conditions

2025 Wash Cockle Fishery



Persons operating under the Authority of a **Hand-work Cockle Permit** for the purpose of fishing within the **cockle** fishery, issued under paragraph 8 of the Wash Cockle and Mussel Byelaw 2021 must fish in accordance with the following conditions.

These Permit Conditions apply should be read in conjunction with the Wash cockle and mussel byelaw including the restrictions set out in Schedule 2 of the byelaw which also apply. These restrictions are appended to the permit conditions for ease of reference.

Interpretation

1. In these permit conditions:
 - a. "UK VMS Hub" means the UK's secure interface platform which is maintained by the Marine Management Organisation and the fisheries policy authorities to collect, store and manage fishing boat monitoring data for use by the MMO and fisheries policy authorities.

Opening of the fishery

2. The fishery will open from [TBC].
3. It is prohibited to fish for, take or remove from the fishery any cockles prior to the open date and time in paragraph 2.

Open / closed areas

4. It is prohibited to fish for, take or remove from the fishery and cockles from any area specified as closed to the fishery in Schedule 1 of these permit conditions.
5. Areas designated as open or closed may be subject to change and Eastern IFCA will provide a minimum of 12 hours' notice of such via text or e-mail to Permit Holders and Nominated Deputies.

Operating times

6. It is prohibited to fish for, take or remove from the fishery any cockles outside of the Operating times specified in Schedule 2 of these permit conditions.

Fishing methods

7. It is prohibited to fish for, take or remove from the fishery any cockles using bottom-towed-gear.

Vessel Monitoring Devices

8. Vessels with an overall length of less than 12m must at all times whilst at sea:
 - a. Have either a Nemo or SC2 I-VMS MMO type-approved I-VMS device installed onboard and operations;
 - b. Have the I-VMS unit switched on and transmitting data to the device supplier hub for onward transmission to the UK VMS Hub at least once in every 3 minutes; and
 - c. Ensure that the device has not been manually overridden, has not been tampered with or damaged and is not obstructed or interfered with so as to compromise or prevent the effective transmission of data to the UK VMS Hub.
9. Subject to condition 10, vessels with an overall length of 12m or more must at all times whilst at sea:
 - a. Have onboard a VMS or VMS+ unit;
 - b. Have the VMS or VMS+ unit switched on and transmitting data to the device supplier hub for onward transmission to the UK VMS Hub at least once in every 3 minutes; and
 - c. Ensure that the device has not been manually overridden, has not been tampered with or damaged and is not obstructed or interfered with so as to compromise or prevent the effective transmission of data to the UK VMS Hub.
10. Where a vessel to which condition 9 applies is not able to meet condition 9(b), condition 9 shall not apply if;
 - a. the vessel has onboard a tracker provided by the Authority; and
 - b. the permit holder or nominated deputy remunerate the Authority for the associated subscription cost.

Measures for the protection of small cockles

11. It is prohibited to fish for, take or remove from the fishery any cockles unless such have been sorted using an implement which is capable of rejecting the majority of cockles which are under 10mm (width).
12. Cockles of less than 10mm should be left on the cockle beds and not landed. Where cockles of less than 10mm are landed excessively, the Authority will consider closing the fishery or parts thereof.

Confirmation

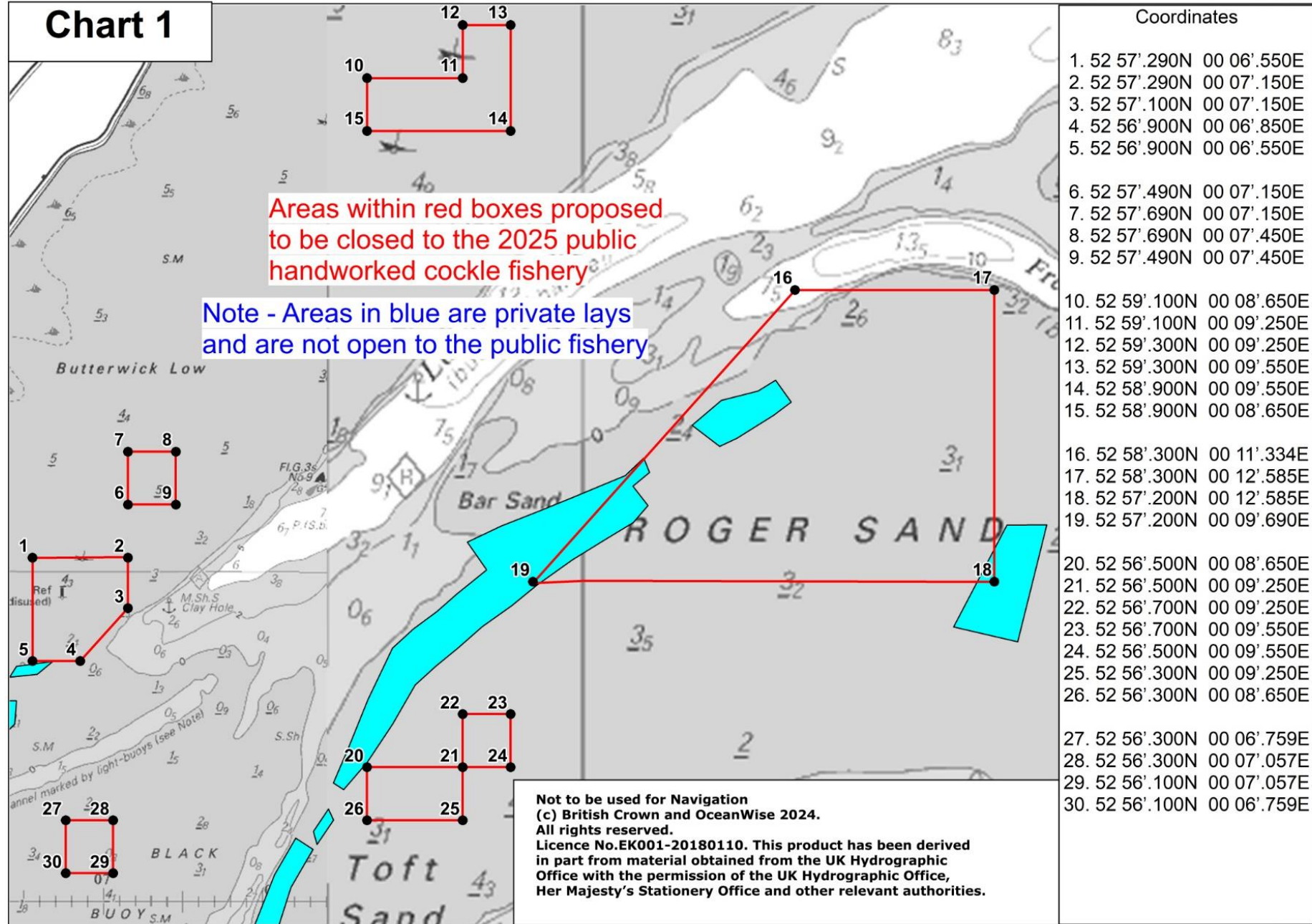
The Permit Conditions come into effect at [TBC].

Signed:

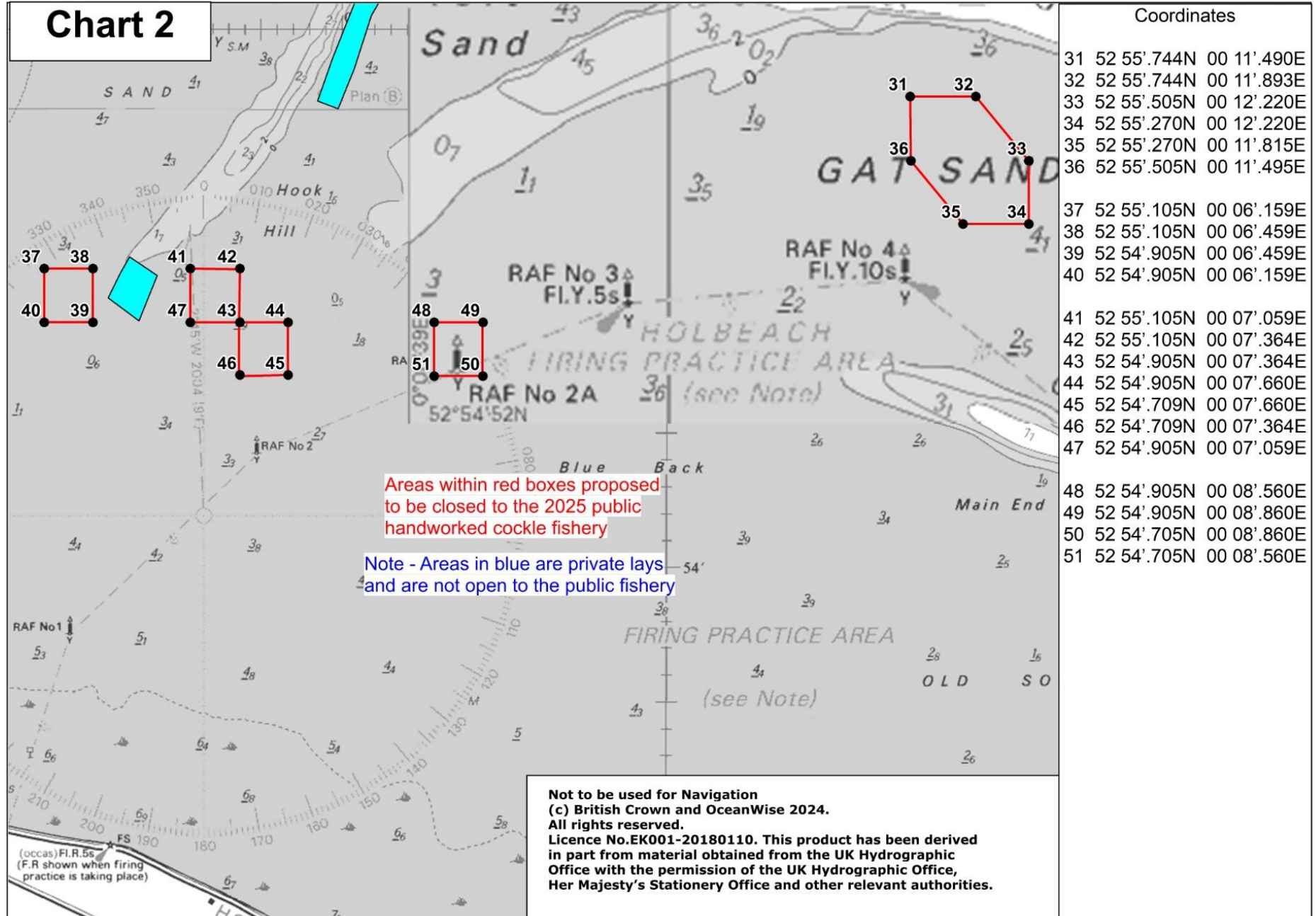
Failure to comply with an exemption condition is an offence under section 163(2) of the Marine and Coastal Access Act 2009. The master, owner and charterer (if any) of a vessel used in the commission of an offence shall each be guilty of any such offence and liable to a fine on summary conviction.

Permit conditions are subject to change and fishers will be notified of any amendments to the conditions.

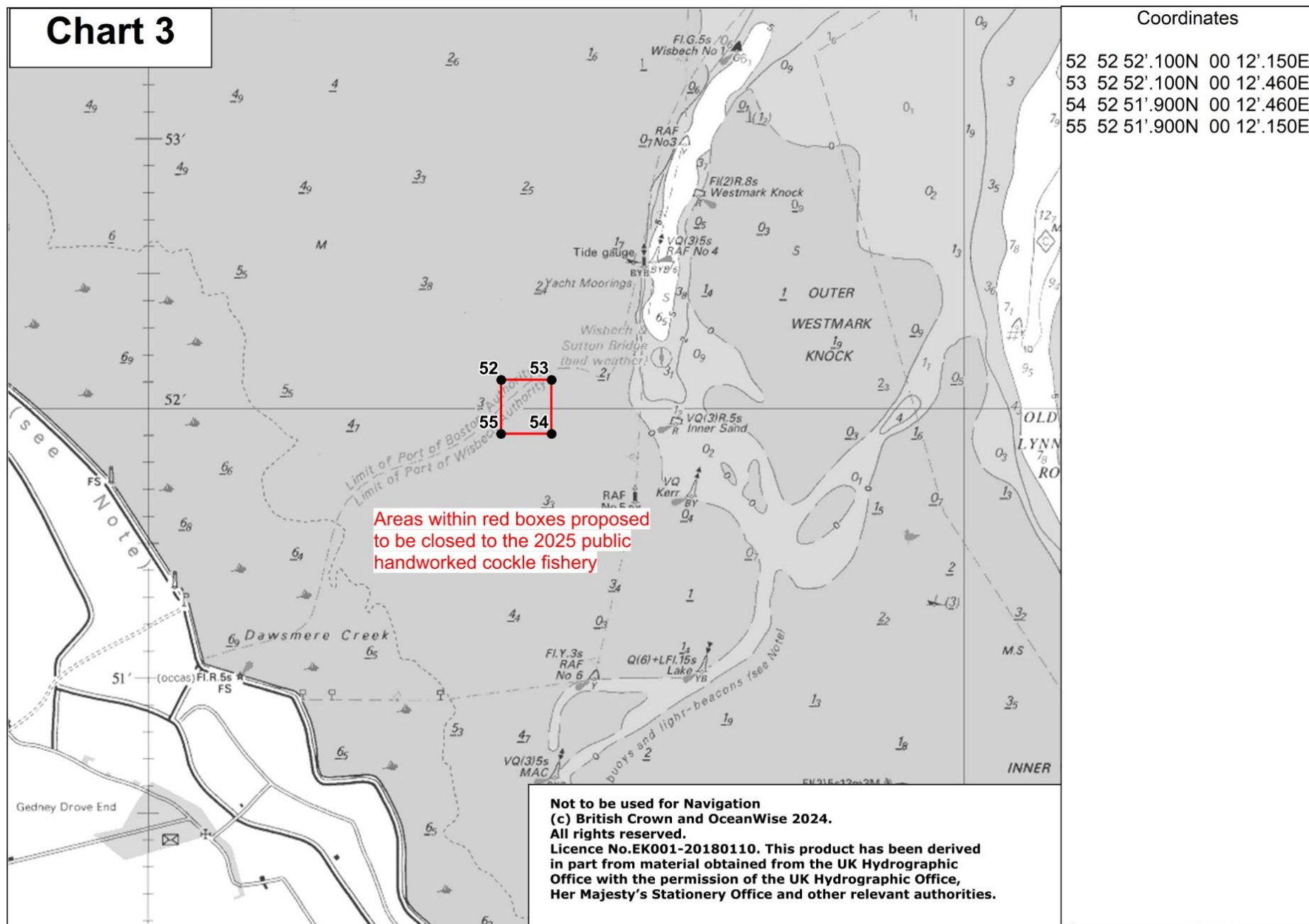
Schedule 1 – Closed areas



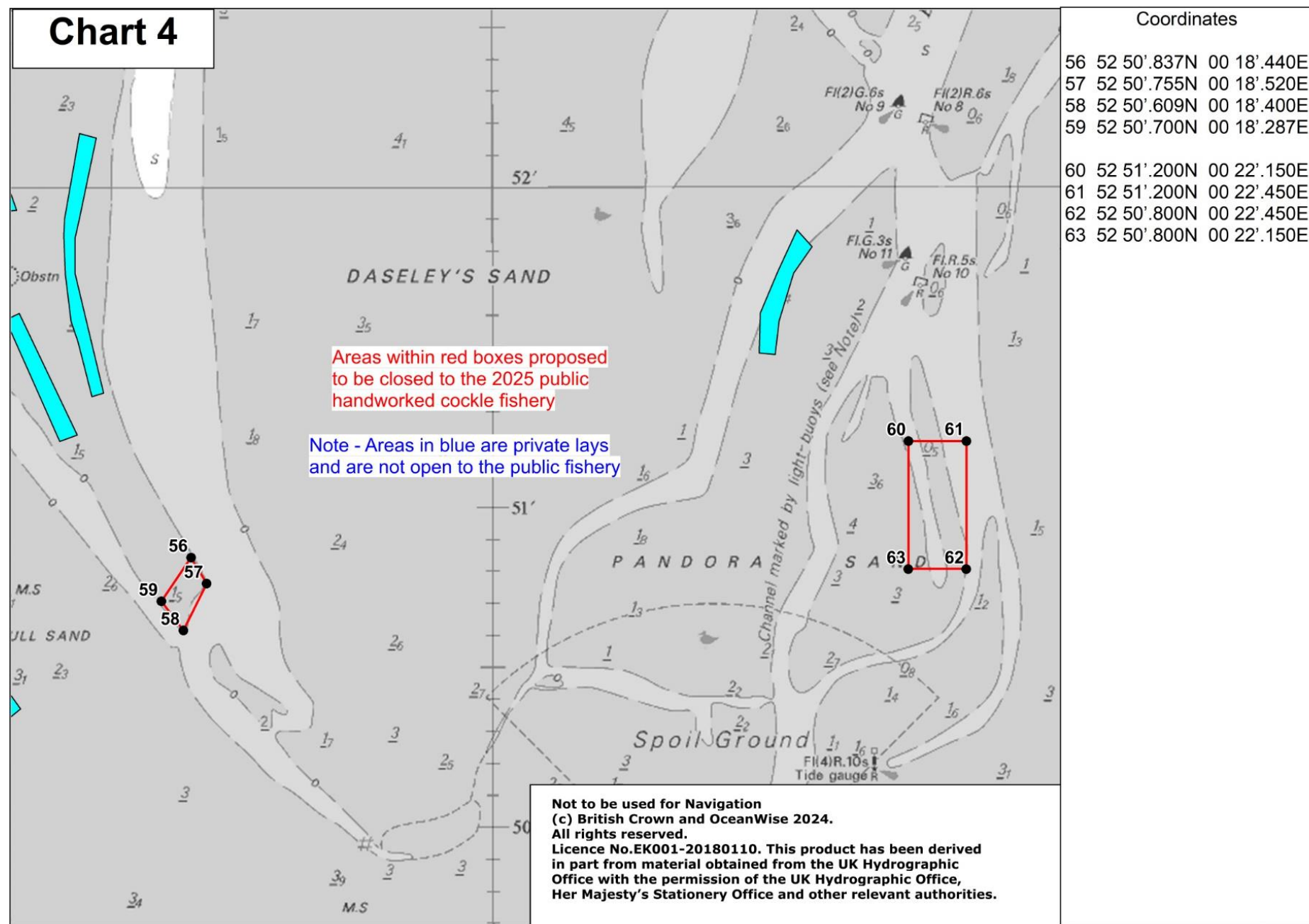
Schedule 1 – Closed areas



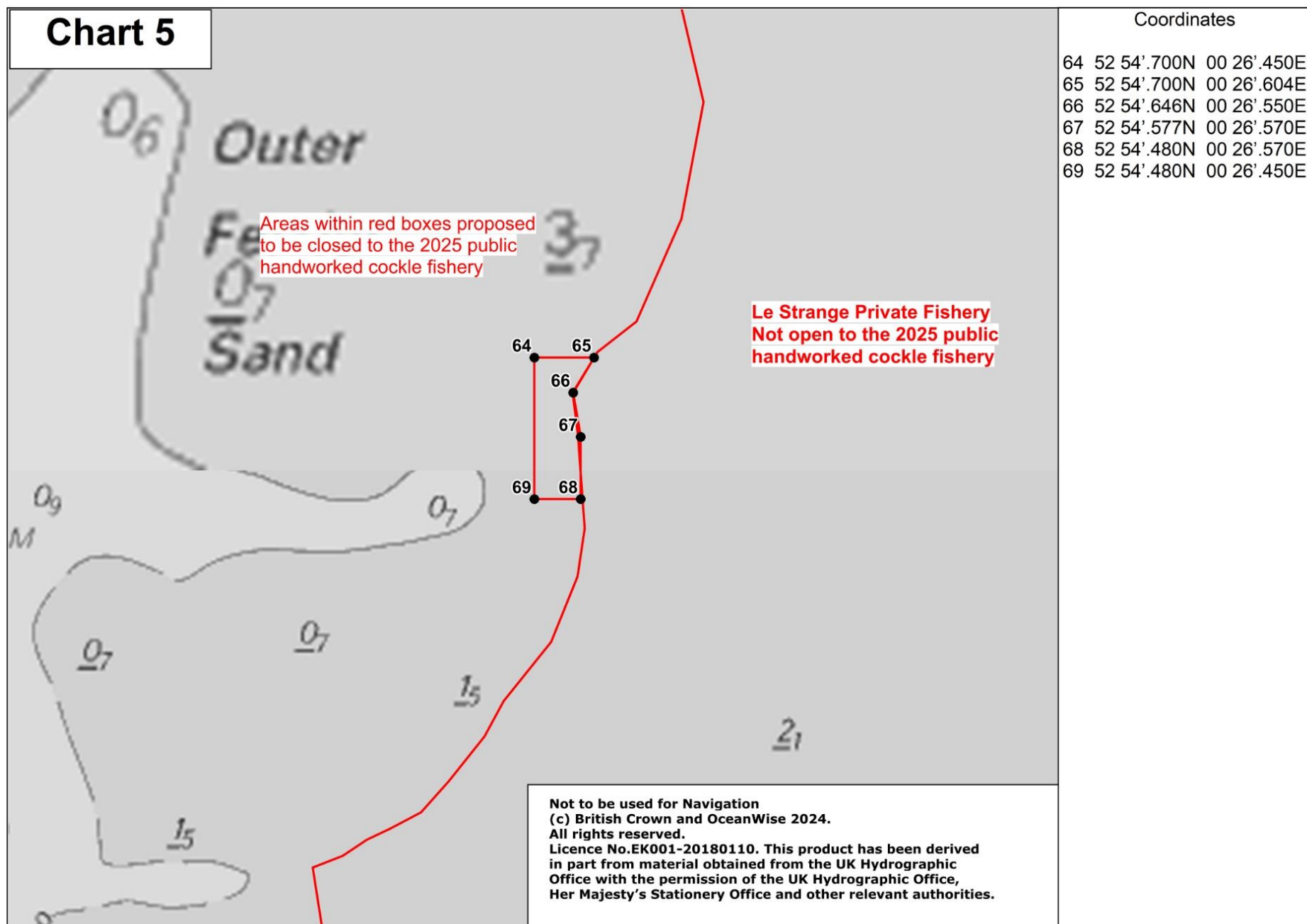
Schedule 1 – Closed areas



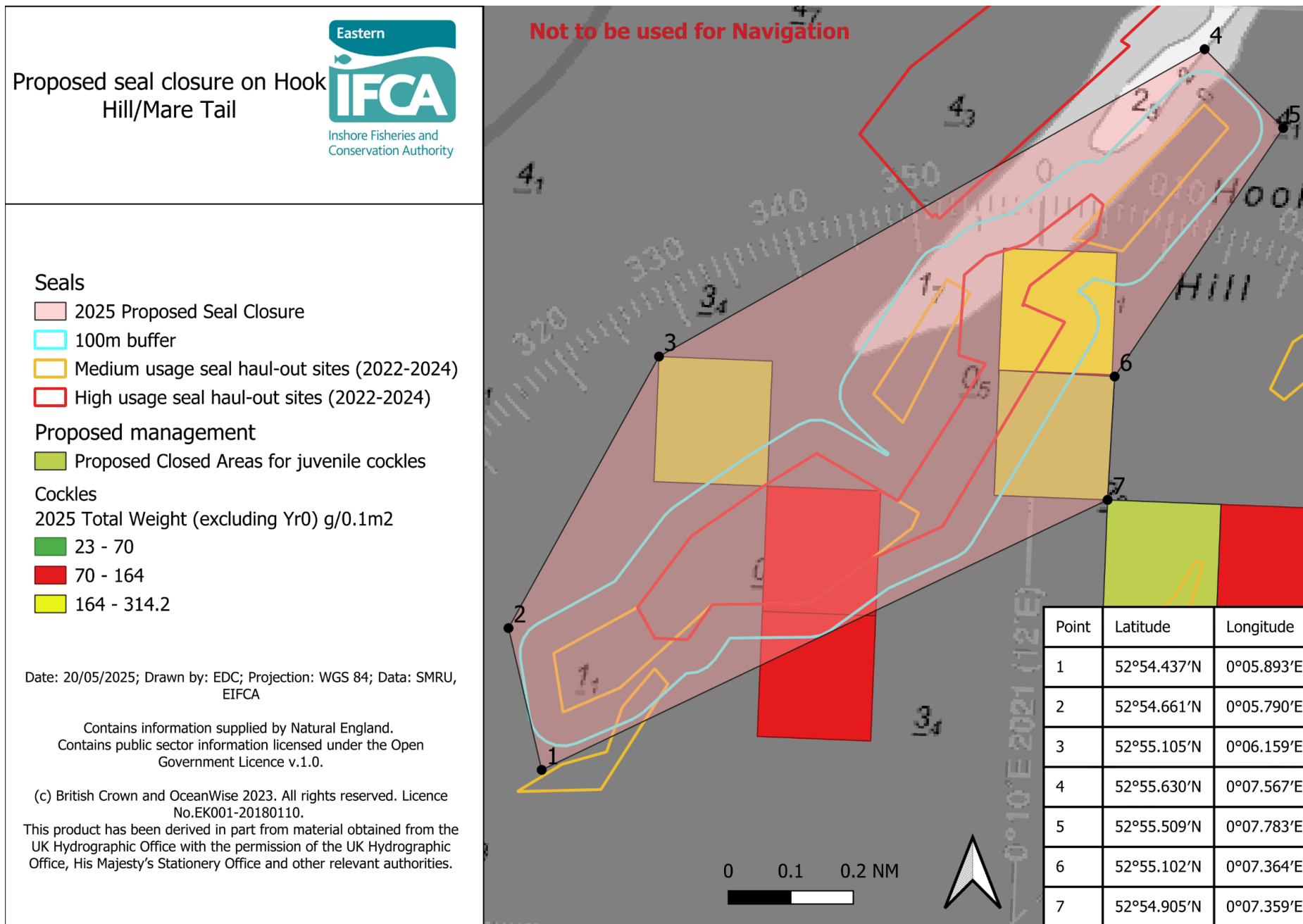
Schedule 1 – Closed areas



Schedule 1 – Closed areas



Schedule 1 – Closed areas



Schedule 1 – Closed areas

Positions of Lays

Toft

TOA	52° 57.487'N	0° 10.412'E
	52° 57.600'N	0° 10.269'E
	52° 57.423'N	0° 10.320'E
	52° 57.566'N	0° 10.135'E
TOB	52° 57.600'N	0° 10.269'E
	52° 57.667'N	0° 10.386'E
	52° 57.560'N	0° 10.319'E
	52° 57.612'N	0° 10.422'E
TO1	52° 57.423'N	0° 10.320'E
	52° 57.566'N	0° 10.135'E
	52° 57.352'N	0° 10.126'E
	52° 57.518'N	0° 09.940'E
TO2	52° 57.352'N	0° 10.126'E
	52° 57.518'N	0° 09.940'E
	52° 57.469'N	0° 09.741'E
	52° 57.282'N	0° 09.938'E
TO3a	52° 57.324'N	0° 09.578'E
	52° 57.399'N	0° 09.808'E
	52° 57.187'N	0° 09.716'E
	52° 57.282'N	0° 09.938'E
TO3b	52° 57.324'N	0° 09.578'E
	52° 57.409'N	0° 09.490'E
	52° 57.469'N	0° 09.741'E
	52° 57.399'N	0° 09.808'E
TO4a	52° 57.110'N	0° 09.558'E
	52° 57.244'N	0° 09.400'E
	52° 57.324'N	0° 09.578'E
	52° 57.187'N	0° 09.716'E
TO4b	52° 57.244'N	0° 09.400'E
	52° 57.289'N	0° 09.470'E
	52° 57.377'N	0° 09.378'E
	52° 57.349'N	0° 09.278'E
TO4c	52° 57.324'N	0° 09.578'E
	52° 57.289'N	0° 09.470'E
	52° 57.377'N	0° 09.378'E
	52° 57.409'N	0° 09.490'E

TO5	52° 57.030'N	0° 09.327'E
	52° 57.154'N	0° 09.214'E
	52° 57.110'N	0° 09.558'E
	52° 57.244'N	0° 09.400'E
TO6	52° 56.950'N	0° 09.221'E
	52° 57.086'N	0° 09.086'E
	52° 57.030'N	0° 09.372'E
	52° 57.154'N	0° 09.214'E
TO7	52° 56.950'N	0° 09.221'E
	52° 57.086'N	0° 09.086'E
	52° 56.882'N	0° 09.083'E
	52° 57.021'N	0° 08.940'E
TO8	52° 56.810'N	0° 08.951'E
	52° 56.949'N	0° 08.809'E
	52° 56.882'N	0° 09.083'E
	52° 57.021'N	0° 08.940'E
TO9	52° 56.810'N	0° 08.951'E
	52° 56.949'N	0° 08.809'E
	52° 56.663'N	0° 08.810'E
	52° 56.757'N	0° 08.657'E
TO10	52° 56.567'N	0° 08.529'E
	52° 56.519'N	0° 08.652'E
	52° 56.663'N	0° 08.810'E
	52° 56.757'N	0° 08.657'E
TO11	52° 56.567'N	0° 08.529'E
	52° 56.519'N	0° 08.652'E
	52° 56.440'N	0° 08.438'E
	52° 56.415'N	0° 08.503'E

Schedule 1 – Closed areas

Clay Hole

CH1	52° 56.540'N	0° 59.980'E
	52° 56.540'N	0° 61.180'E
	52° 56.630'N	0° 63.300'E
	52° 56.640'N	0° 61.120'E
CH1a	52° 56.630'N	00° 06.300'E
	52° 56.629'N	00° 06.383'E
	52° 56.540'N	00° 06.180'E
	52° 56.540'N	00° 05.980'E
	52° 56.463'N	00° 06.081'E
CH2	52° 56.640'N	00° 06.120'E
	52° 56.630'N	00° 06.300'E
	52° 56.750'N	00° 06.450'E
	52° 56.750'N	00° 06.290'E
CH2a	52° 56.630'N	00° 06.300'E
	52° 56.629'N	00° 06.383'E
	52° 56.540'N	00° 06.180'E
	52° 56.540'N	00° 06.980'E
	52° 56.463'N	00° 06.081'E
CH4	52° 56.850'N	0° 06.580'E
	52° 56.810'N	0° 06.350'E
	52° 56.880'N	0° 06.450'E
	52° 56.900'N	0° 06.680'E
CH6	52° 56.155'N	0° 05.629'E
	52° 56.135'N	0° 05.461'E
	52° 56.077'N	0° 05.462'E
	52° 56.103'N	0° 05.631'E
	52° 56.165'N	0° 05.725'E
	52° 56.210'N	0° 05.724'E
CH7	52° 56.493'N	0° 05.815'E
	52° 56.448'N	0° 05.879'E
	52° 56.454'N	0° 05.660'E
	52° 56.406'N	0° 05.700'E
CH8	52° 56.540'N	0° 05.980'E
	52° 56.463'N	0° 06.081'E
	52° 56.493'N	0° 05.815'E
	52° 56.448'N	0° 05.879'E

Roger

RG1	52° 56.973'N	0° 12.732'E
	52° 57.029'N	0° 12.330'E
	52° 57.414'N	0° 12.914'E
	52° 57.413'N	0° 12.664'E
RG2	52° 57.960'N	0° 11.213'E
	52° 57.877'N	0° 11.310'E
	52° 57.827'N	0° 11.200'E
	52° 57.919'N	0° 11.103'E
RG3	52° 57.884'N	0° 10.873'E
	52° 57.741'N	0° 10.971'E
	52° 57.710'N	0° 10.862'E
	52° 57.790'N	0° 10.689'E
RG4	52° 57.827'N	0° 11.200'E
	52° 57.919'N	0° 11.103'E
	52° 57.884'N	0° 10.873'E
	52° 57.741'N	0° 10.971'E

Black Buoy/Herring Hill

BB1	52° 56.340'N	0° 08.410'E
	52° 56.300'N	0° 08.440'E
	52° 56.260'N	0° 08.310'E
	52° 56.210'N	0° 08.340'E
BB2	52° 56.232'N	0° 08.202'E
	52° 56.190'N	0° 08.310'E
	52° 56.094'N	0° 08.070'E
	52° 56.046'N	0° 08.172'E
BB3	52° 56.094'N	0° 08.070'E
	52° 56.046'N	0° 08.172'E
	52° 55.847'N	0° 08.067'E
	52° 55.886'N	0° 07.932'E
BB4	52° 55.699'N	0° 07.967'E
	52° 55.728'N	0° 07.841'E
	52° 55.847'N	0° 08.067'E
	52° 55.886'N	0° 07.932'E
HH1	52° 54.996'N	0° 06.552'E
	52° 55.088'N	0° 06.627'E
	52° 55.148'N	0° 06.684'E
	52° 54.911'N	0° 06.742'E
	52° 55.078'N	0° 06.855'E

Schedule 1 – Closed areas

Thief

TH2	52° 51.200'N	0° 17.760'E
	52° 51.580'N	0° 17.480'E
	52° 51.220'N	0° 17.850'E
	52° 51.600'N	0° 17.550'E
TH4	52° 51.712'N	0° 17.788'E
	52° 51.575'N	0° 17.819'E
	52° 51.511'N	0° 17.853'E
	52° 51.435'N	0° 17.886'E
	52° 51.340'N	0° 17.926'E
	52° 51.351'N	0° 17.987'E
	52° 51.717'N	0° 17.846'E
TH5	52° 51.844'N	0° 17.781'E
	52° 51.917'N	0° 17.789'E
	52° 51.724'N	0° 17.838'E
	52° 51.837'N	0° 17.839'E
TH6	52° 51.922'N	0° 17.536'E
	52° 52.045'N	0° 17.208'E
	52° 52.060'N	0° 17.475'E
	52° 51.908'N	0° 17.292'E
TH7	52° 51.897'N	0° 17.784'E
	52° 51.897'N	0° 17.861'E
	52° 51.837'N	0° 17.839'E
	52° 51.845'N	0° 17.781'E
TH8	52° 51.897'N	0° 17.784'E
	52° 51.897'N	0° 17.861'E
	52° 52.162'N	0° 17.861'E
	52° 52.148'N	0° 17.948'E

Scotsman's Sled

SS1	52° 50.386'N	0° 17.100'E
	52° 50.240'N	0° 17.298'E
	52° 50.330'N	0° 17.489'E
	52° 50.430'N	0° 17.340'E
SS2	52° 50.652'N	0° 16.523'E
	52° 50.600'N	0° 16.447'E
	52° 50.686'N	0° 16.296'E
	52° 50.770'N	0° 16.362'E
SS4	52° 50.819'N	0° 16.150'E
	52° 50.772'N	0° 16.114'E
	52° 50.728'N	0° 16.236'E
	52° 50.794'N	0° 16.303'E
	52° 50.839'N	0° 16.246'E
SS5	52° 50.658'N	0° 16.527'E
	52° 50.595'N	0° 16.444'E
	52° 50.490'N	0° 16.440'E
	52° 50.486'N	0° 16.540'E
SS7	52° 50.386'N	0° 17.100'E
	52° 50.614'N	0° 17.153'E
	52° 50.518'N	0° 16.988'E
	52° 50.430'N	0° 17.340'E
SS8	52° 50.518'N	0° 16.988'E
	52° 50.614'N	0° 17.153'E
	52° 50.430'N	0° 17.340'E
	52° 50.330'N	0° 17.489'E
	52° 50.364'N	0° 17.558'E
	52° 50.644'N	0° 17.226'E
	52° 50.714'N	0° 17.126'E
	52° 50.595'N	0° 16.884'E

Schedule 1 – Closed areas

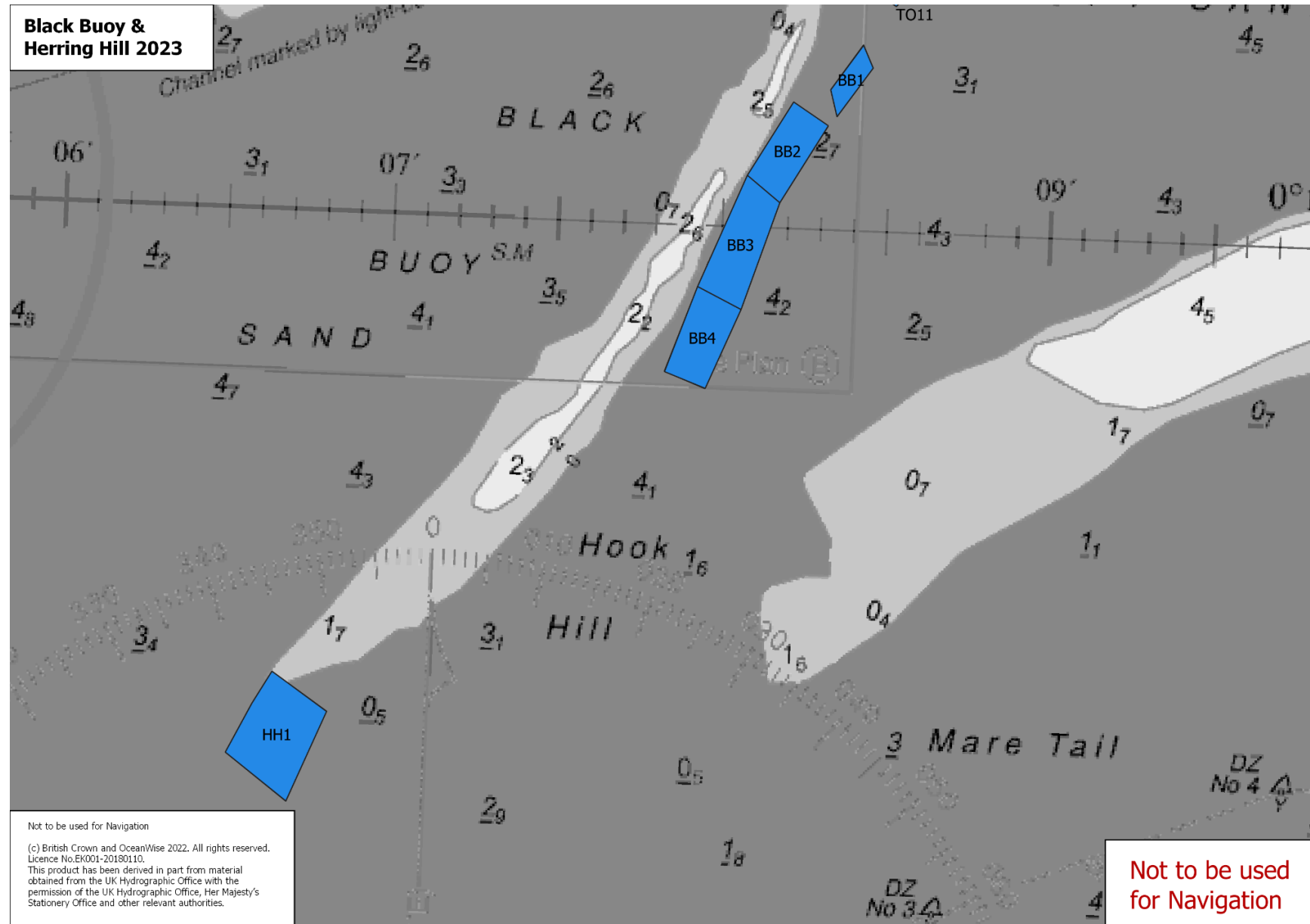
Pandora

P6	52° 51.860'N	0° 21.573'E
	52° 51.808'N	0° 21.651'E
	52° 51.724'N	0° 21.557'E
	52° 51.576'N	0° 21.481'E
	52° 51.600'N	0° 21.385'E
	52° 51.726'N	0° 21.473'E
P7	52° 51.476'N	0° 21.377'E
	52° 51.471'N	0° 21.460'E
	52° 51.576'N	0° 21.481'E
	52° 51.600'N	0° 21.385'E

Wrangle

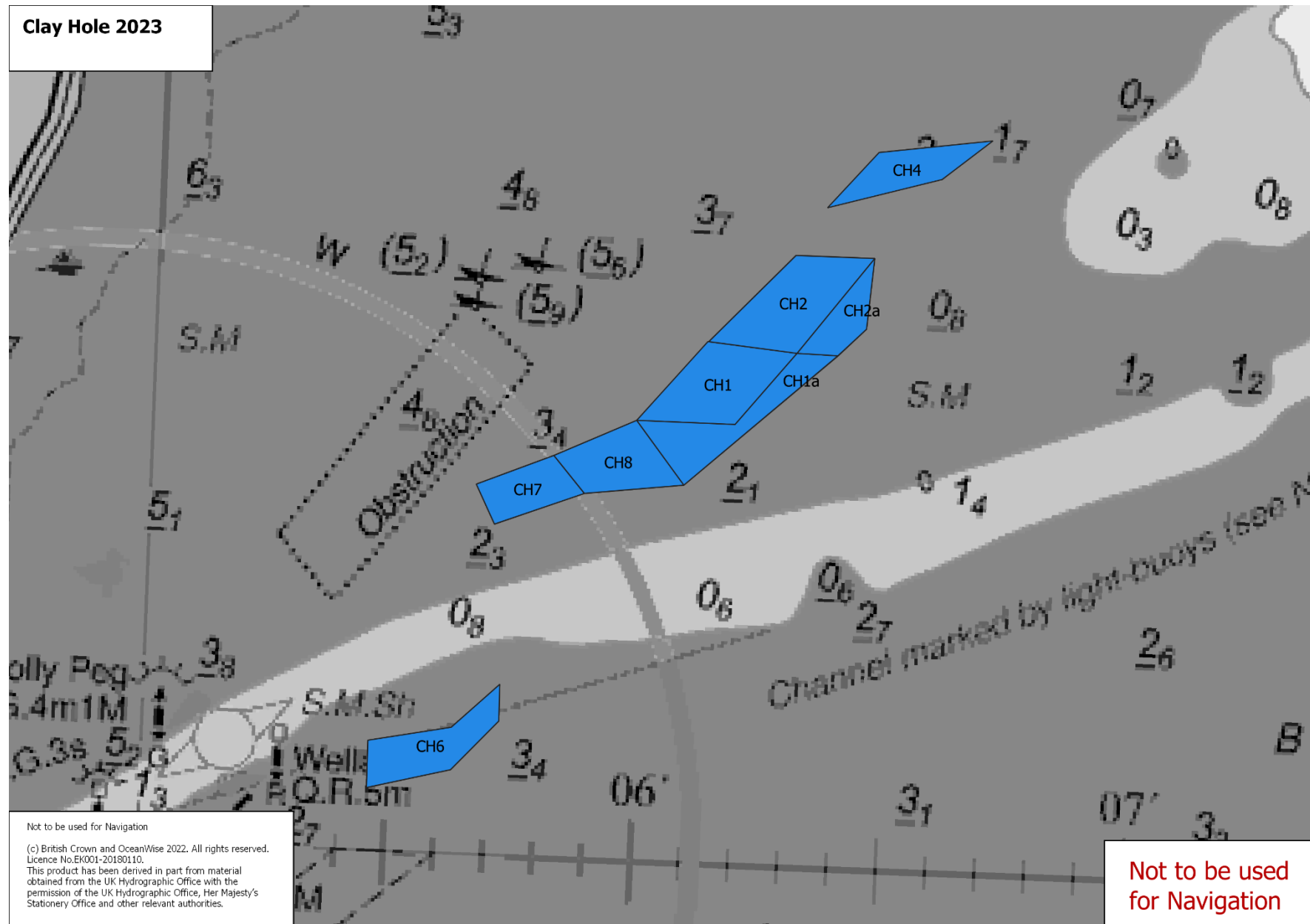
W1	53° 00.264'N	0° 12.100'E
	53° 00.262'N	0° 12.266'E
	52° 59.989'N	0° 12.097'E
	52° 59.979'N	0° 12.194'E
W2	53° 00.262'N	0° 12.266'E
	53° 00.263'N	0° 12.427'E
	53° 00.067'N	0° 12.373'E
	52° 59.971'N	0° 12.268'E
	52° 59.979'N	0° 12.194'E

Schedule 1 – Closed areas



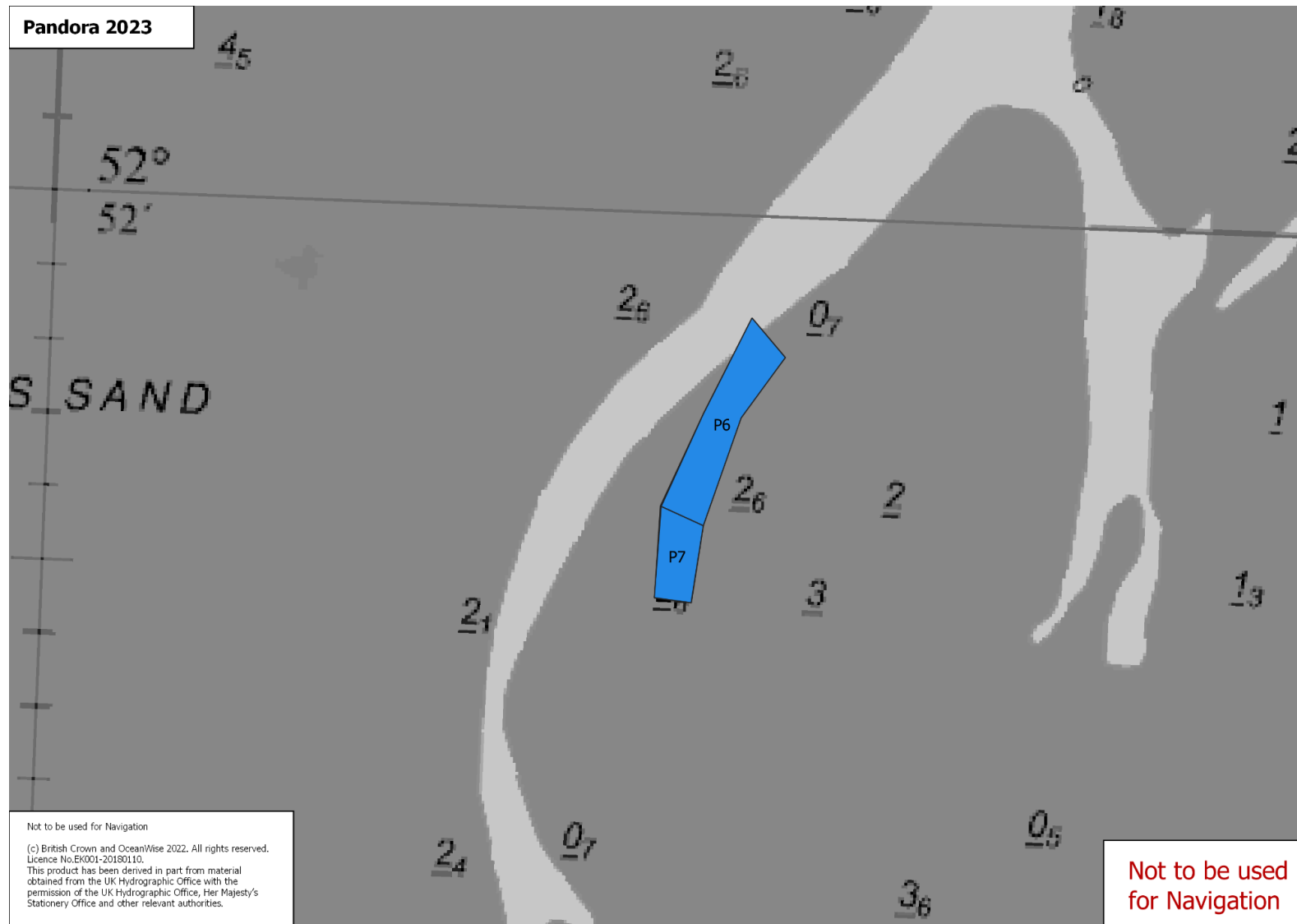
Wash Lays Chart 1 – showing the area of Black Buoy and Herring Hill sands and private lays

Schedule 1 – Closed areas



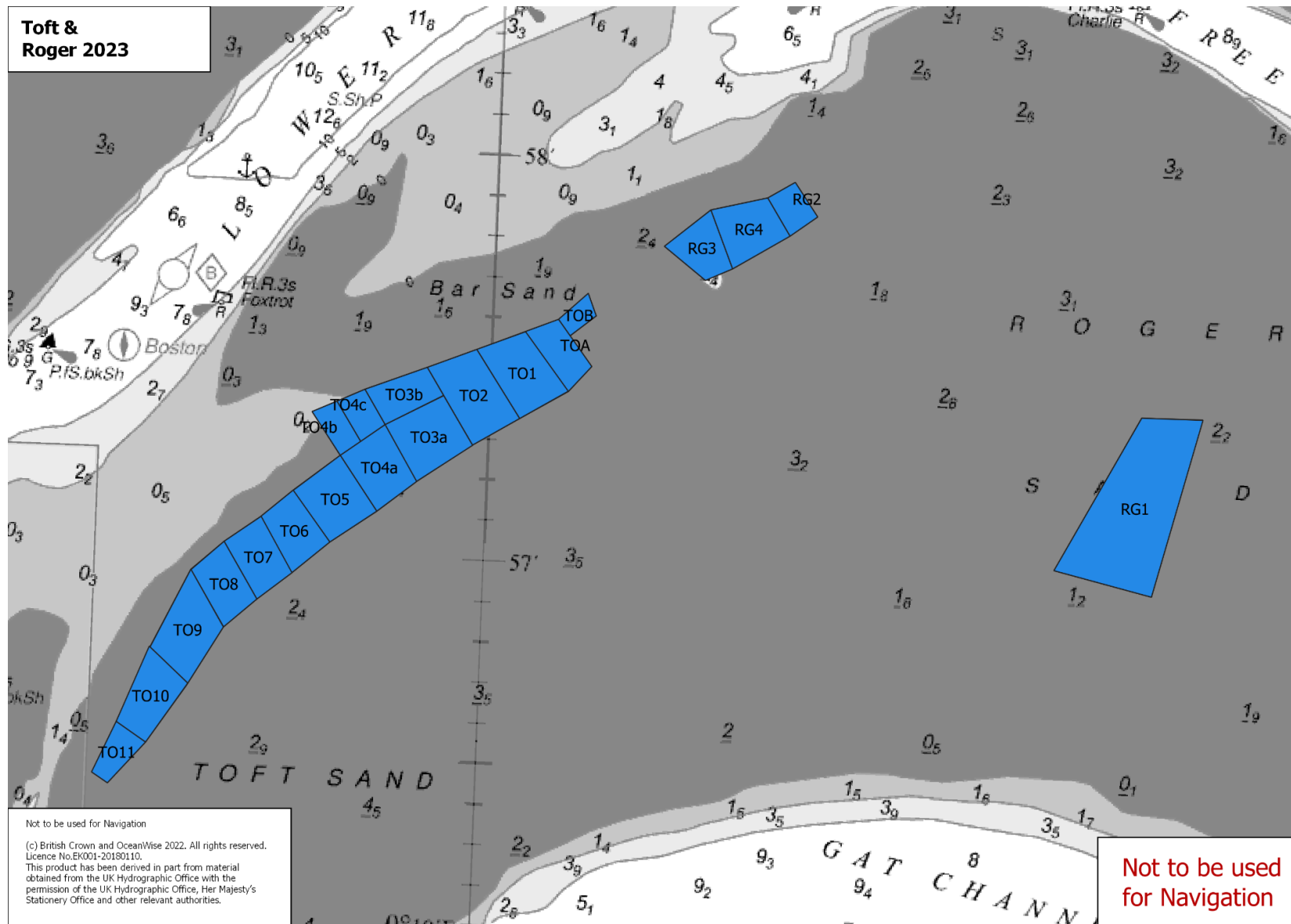
Wash Lays Chart 2 – showing the area of Clay Hole and private lays

Schedule 1 – Closed areas



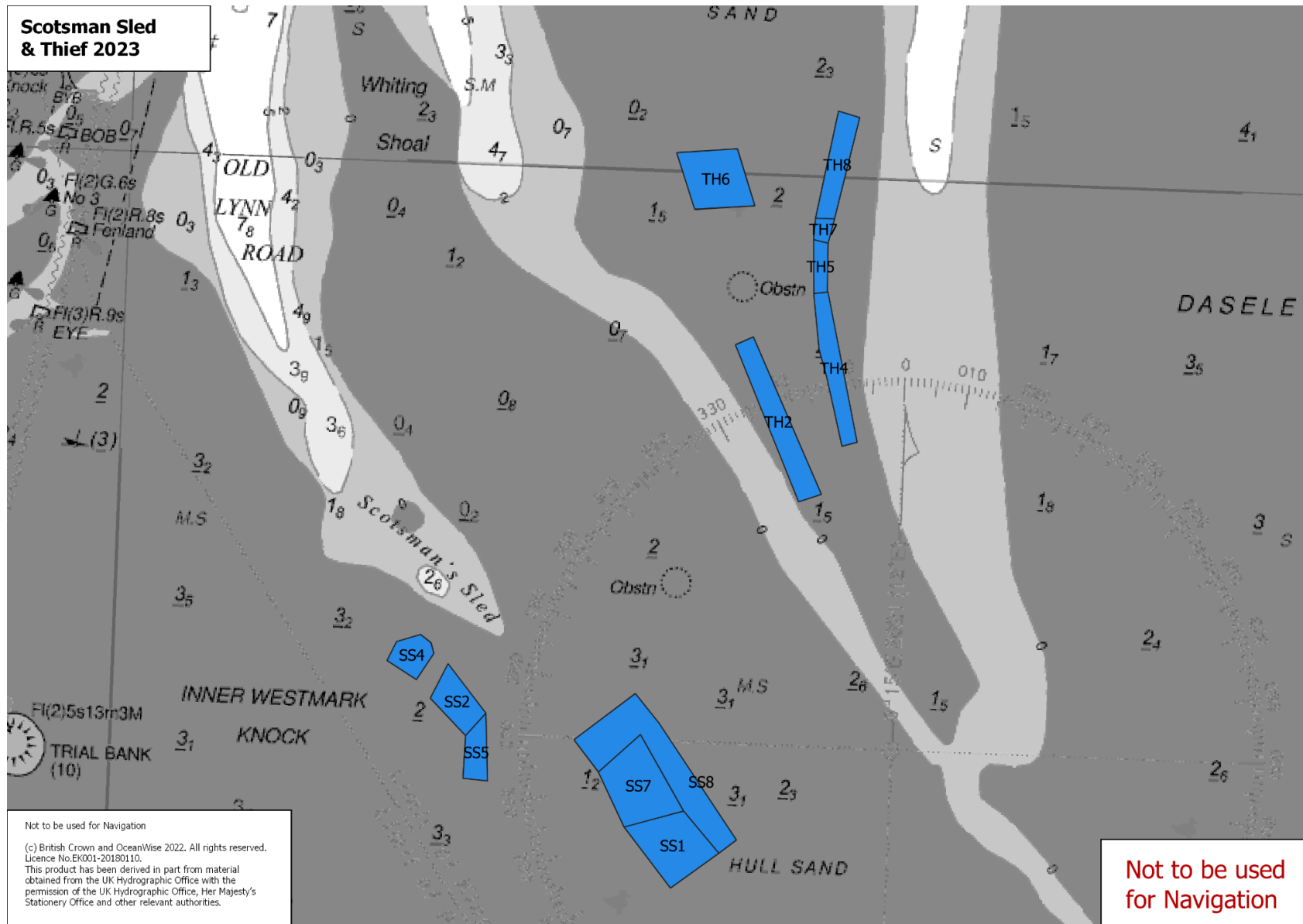
Wash Lays Chart 3 – showing the area of Pandora sands and private lays

Schedule 1 – Closed areas



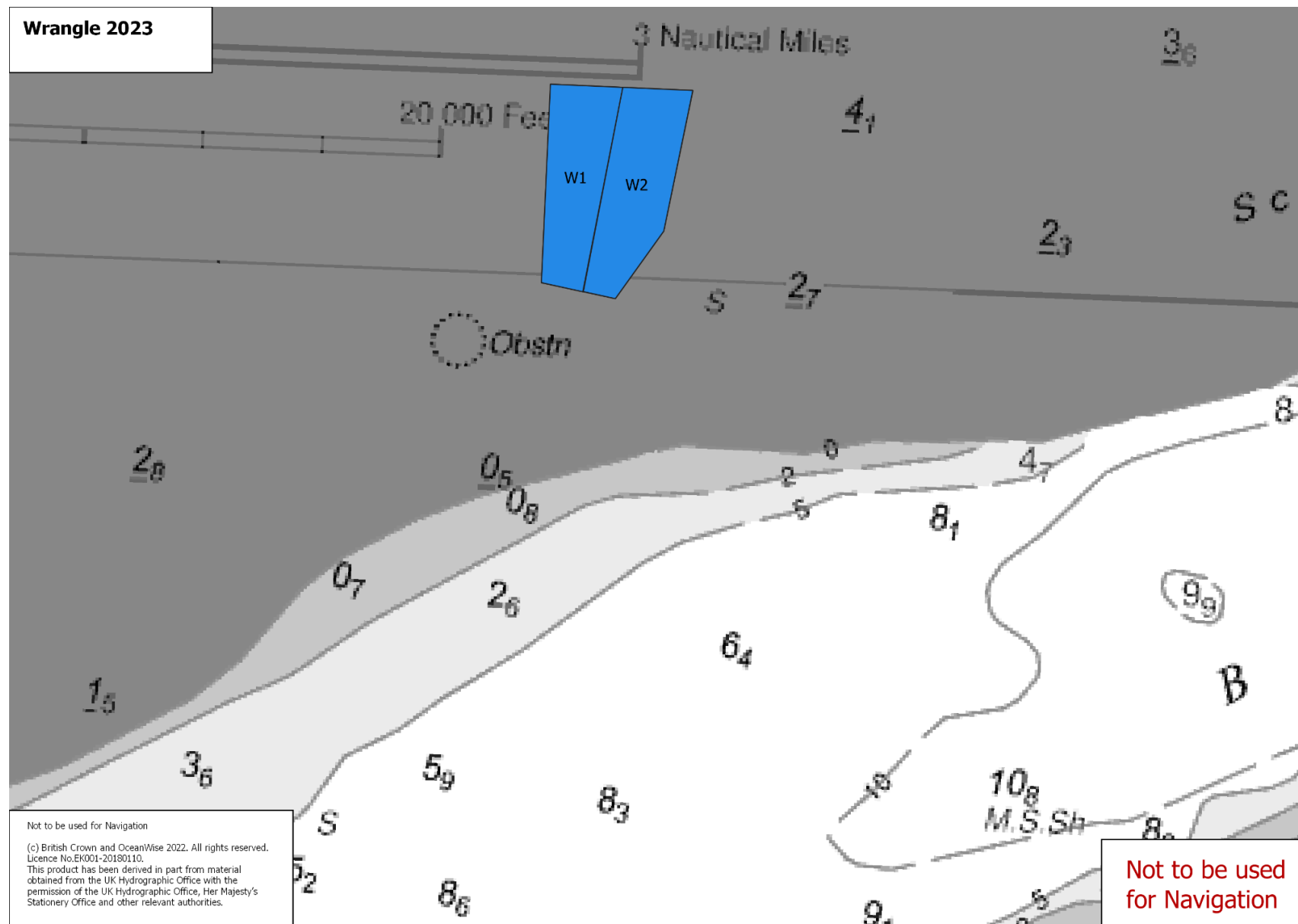
Wash Lays Chart 4 – showing the area of Toft and Roger sands and private lays

Schedule 1 – Closed areas



Wash Lays Chart 5 – showing the area of Scotsman Sled and Thief sands and private lays

Schedule 1 – Areas closed to the 2025 Wash Cockle Fishery



Wash Lays Chart 6 – showing the area of Wrangle and private lays

Schedule 2 – Operating times

In accordance with permit condition 6, it is prohibited to fish outside of the periods specified as open in this schedule.

	White rows are open periods
	Blue rows are closed periods

June

Date	Day	High Water	Height	High Water	Height	Open/close
1	Sun	1047hrs	6.67	2346hrs	6.1	
2	Mon	1136hrs	6.33	****	***	
3	Tue	0050hrs	5.76	1233hrs	6.02	
4	Wed	0155hrs	5.57	1342hrs	5.82	
5	Thu	0258hrs	5.55	1453hrs	5.78	
6	Fri	0354hrs	5.67	1556hrs	5.88	
7	Sat	0445hrs	5.87	1650hrs	6.05	
8	Sun	0527hrs	6.12	1737hrs	6.23	
9	Mon	0606hrs	6.38	1821hrs	6.39	Open 0400hrs
10	Tue	0642hrs	6.61	1901hrs	6.5	
11	Wed	0717hrs	6.77	1940hrs	6.56	
12	Thu	0751hrs	6.88	2018hrs	6.58	Close 2230hrs
13	Fri	0826hrs	6.93	2055hrs	6.57	
14	Sat	0901hrs	6.94	2134hrs	6.53	
15	Sun	0939hrs	6.89	2216hrs	6.43	Open 0730hrs
16	Mon	1019hrs	6.8	2301hrs	6.28	
17	Tue	1103hrs	6.69	2351hrs	6.11	
18	Wed	1151hrs	6.58	****	***	Close 1400hrs
19	Thu	0049hrs	5.98	1248hrs	6.51	
20	Fri	0155hrs	5.94	1353hrs	6.49	
21	Sat	0302hrs	6.03	1502hrs	6.57	
22	Sun	0404hrs	6.22	1609hrs	6.72	
23	Mon	0504hrs	6.48	1715hrs	6.9	Open 0300hrs
24	Tue	0600hrs	6.76	1819hrs	7.08	
25	Wed	0651hrs	7.03	1918hrs	7.21	
26	Thu	0738hrs	7.23	2012hrs	7.25	
27	Fri	0822hrs	7.34	2101hrs	7.16	Close 2300hrs
28	Sat	0905hrs	7.33	2149hrs	6.95	
29	Sun	0946hrs	7.22	2233hrs	6.65	
30	Mon	1027hrs	7.02	2317hrs	6.31	

Schedule 2 – Operating times

July

Date	Day	High Water	Height	High Water	Height	Open/close
1	Tue	1108hrs	6.75	2359hrs	5.99	
2	Wed	1152hrs	6.42	****	***	
3	Thu	0048hrs	5.7	1242hrs	6.06	
4	Fri	0142hrs	5.49	1342hrs	5.74	
5	Sat	0242hrs	5.41	1451hrs	5.57	
6	Sun	0344hrs	5.5	1602hrs	5.59	
7	Mon	0442hrs	5.75	1706hrs	5.77	
8	Tue	0533hrs	6.08	1800hrs	6.02	Open 0330hrs
9	Wed	0618hrs	6.41	1846hrs	6.28	
10	Thu	0657hrs	6.69	1927hrs	6.49	
11	Fri	0735hrs	6.93	2006hrs	6.68	Close 2215hrs
12	Sat	0812hrs	7.13	2044hrs	6.83	
13	Sun	0848hrs	7.29	2124hrs	6.91	
14	Mon	0926hrs	7.38	2203hrs	6.89	Open 0715hrs
15	Tue	1004hrs	7.39	2245hrs	6.76	
16	Wed	1044hrs	7.3	2327hrs	6.53	
17	Thu	1127hrs	7.13	****	***	
18	Fri	0015hrs	6.26	1217hrs	6.87	Close 0215hrs
19	Sat	0111hrs	6.01	1318hrs	6.56	
20	Sun	0220hrs	5.86	1433hrs	6.31	
21	Mon	0334hrs	5.9	1554hrs	6.25	Open 1345hrs
22	Tue	0448hrs	6.14	1717hrs	6.43	
23	Wed	0551hrs	6.53	1825hrs	6.74	
24	Thu	0643hrs	6.92	1920hrs	7	Close 2130hrs
25	Fri	0728hrs	7.24	2008hrs	7.14	
26	Sat	0809hrs	7.45	2051hrs	7.15	
27	Sun	0848hrs	7.53	2129hrs	7.03	
28	Mon	0925hrs	7.5	2204hrs	6.82	Open 0715hrs
29	Tue	1000hrs	7.34	2237hrs	6.57	
30	Wed	1035hrs	7.07	2310hrs	6.28	
31	Thu	1111hrs	6.69	2345hrs	5.97	Close 1315hrs

Schedule 2 – Operating times

August

Date	Day	High Water	Height	High Water	Height	Open/close
1	Fri	1150hrs	6.23	****	***	
2	Sat	0027hrs	5.65	1239hrs	5.72	
3	Sun	0123hrs	5.36	1348hrs	5.3	
4	Mon	0237hrs	5.25	1516hrs	5.17	
5	Tue	0356hrs	5.42	1640hrs	5.41	
6	Wed	0503hrs	5.83	1742hrs	5.85	
7	Thu	0554hrs	6.3	1830hrs	6.29	Open 0330hrs
8	Fri	0637hrs	6.74	1910hrs	6.67	Close 2100hrs
9	Sat	0715hrs	7.13	1948hrs	6.98	
10	Sun	0751hrs	7.47	2026hrs	7.21	
11	Mon	0828hrs	7.74	2104hrs	7.34	Open 0615hrs
12	Tue	0905hrs	7.9	2142hrs	7.31	
13	Wed	0942hrs	7.91	2219hrs	7.13	
14	Thu	1021hrs	7.74	2258hrs	6.82	
15	Fri	1103hrs	7.4	2340hrs	6.43	
16	Sat	1151hrs	6.9	****	***	Close 0200hrs
17	Sun	0033hrs	6.01	1254hrs	6.31	
18	Mon	0145hrs	5.68	1423hrs	5.87	
19	Tue	0316hrs	5.64	1606hrs	5.88	
20	Wed	0442hrs	5.99	1730hrs	6.29	Open 1530hrs
21	Thu	0546hrs	6.52	1829hrs	6.74	
22	Fri	0634hrs	7	1915hrs	7.04	Close 2115hrs
23	Sat	0714hrs	7.36	1954hrs	7.18	
24	Sun	0750hrs	7.6	2028hrs	7.2	Open 0550hrs
25	Mon	0824hrs	7.7	2100hrs	7.14	
26	Tue	0858hrs	7.67	2129hrs	7.02	
27	Wed	0930hrs	7.5	2157hrs	6.84	
28	Thu	1002hrs	7.2	2226hrs	6.59	
29	Fri	1033hrs	6.78	2256hrs	6.27	Close 0030hrs
30	Sat	1106hrs	6.25	2331hrs	5.89	
31	Sun	1148hrs	5.67	****	***	

Schedule 2 – Operating times

September

Date	Day	High Water	Height	High Water	Height	Open/close
1	Mon	0018hrs	5.46	1251hrs	5.13	
2	Tue	0132hrs	5.15	1437hrs	4.92	
3	Wed	0311hrs	5.21	1614hrs	5.25	
4	Thu	0430hrs	5.68	1719hrs	5.85	
5	Fri	0526hrs	6.3	1806hrs	6.44	
6	Sat	0609hrs	6.88	1847hrs	6.92	
7	Sun	0648hrs	7.38	1924hrs	7.29	Open 0445hrs
8	Mon	0725hrs	7.8	2001hrs	7.53	
9	Tue	0802hrs	8.11	2038hrs	7.65	
10	Wed	0839hrs	8.27	2115hrs	7.59	
11	Thu	0918hrs	8.2	2151hrs	7.37	
12	Fri	0958hrs	7.89	2229hrs	7	
13	Sat	1042hrs	7.36	2311hrs	6.53	0100hrs
14	Sun	1135hrs	6.66	****	***	
15	Mon	0004hrs	6.01	1248hrs	5.94	
16	Tue	0121hrs	5.59	1437hrs	5.6	
17	Wed	0307hrs	5.58	1618hrs	5.88	
18	Thu	0434hrs	6.06	1728hrs	6.42	Open 0230hrs
19	Fri	0533hrs	6.64	1818hrs	6.85	Close 2030hrs
20	Sat	0616hrs	7.11	1857hrs	7.08	
21	Sun	0652hrs	7.42	1929hrs	7.18	
22	Mon	0725hrs	7.62	1957hrs	7.23	Open 0515hrs
23	Tue	0757hrs	7.7	2026hrs	7.24	
24	Wed	0830hrs	7.64	2054hrs	7.19	
25	Thu	0901hrs	7.45	2121hrs	7.05	
26	Fri	0931hrs	7.12	2148hrs	6.83	Close 2345hrs
27	Sat	1000hrs	6.69	2215hrs	6.51	
28	Sun	1031hrs	6.19	2247hrs	6.12	
29	Mon	1110hrs	5.64	2330hrs	5.66	
30	Tue	****	***	1212hrs	5.13	

Schedule 2 – Operating times

October

Date	Day	High Water	Height	High Water	Height	Open/close
01	Wed	0039hrs	5.26	1359hrs	4.92	
2	Thu	0221hrs	5.21	1537hrs	5.28	
3	Fri	0347hrs	5.67	1644hrs	5.92	
4	Sat	0447hrs	6.33	1733hrs	6.55	
5	Sun	0533hrs	6.97	1816hrs	7.07	Open 0330hrs
6	Mon	0615hrs	7.53	1854hrs	7.44	
7	Tue	0654hrs	7.98	1932hrs	7.68	
8	Wed	0733hrs	8.27	2009hrs	7.78	
9	Thu	0814hrs	8.35	2046hrs	7.72	
10	Fri	0857hrs	8.18	2125hrs	7.49	Close 2330hrs
11	Sat	0942hrs	7.75	2205hrs	7.1	
12	Sun	1032hrs	7.12	2251hrs	6.62	
13	Mon	1132hrs	6.38	2346hrs	6.09	
14	Tue	****	***	1255hrs	5.78	
15	Wed	0103hrs	5.69	1440hrs	5.65	
16	Thu	0248hrs	5.71	1603hrs	5.98	
17	Fri	0409hrs	6.14	1705hrs	6.42	
18	Sat	0506hrs	6.63	1751hrs	6.75	
19	Sun	0548hrs	7	1827hrs	6.94	Open 0345hrs
20	Mon	0624hrs	7.25	1857hrs	7.07	
21	Tue	0657hrs	7.4	1925hrs	7.17	
22	Wed	0730hrs	7.45	1953hrs	7.24	
23	Thu	0803hrs	7.38	2021hrs	7.24	
24	Fri	0835hrs	7.19	2049hrs	7.14	Close 2300hrs
25	Sat	0906hrs	6.9	2117hrs	6.94	
26	Sun	0837hrs	6.54	2045hrs	6.67	Open 0630hrs
27	Mon	0910hrs	6.14	2118hrs	6.32	Close 2315hrs
28	Tue	0951hrs	5.71	2202hrs	5.93	
29	Wed	1051hrs	5.33	2304hrs	5.59	
30	Thu	****	***	1218hrs	5.17	
31	Fri	0028hrs	5.5	1351hrs	5.43	

Schedule 2 – Operating times

November

Date	Day	High Water	Height	High Water	Height	Open/close
1	Sat	0154hrs	5.81	1458hrs	5.95	
2	Sun	0258hrs	6.37	1553hrs	6.51	
3	Mon	0350hrs	6.96	1639hrs	6.99	Open 0145hrs
4	Tue	0437hrs	7.49	1721hrs	7.35	
5	Wed	0522hrs	7.89	1802hrs	7.59	
6	Thu	0608hrs	8.12	1842hrs	7.71	Close 2045hrs
7	Fri	0655hrs	8.13	1923hrs	7.69	
8	Sat	0744hrs	7.92	2006hrs	7.5	
9	Sun	0835hrs	7.49	2049hrs	7.19	Open 0630hrs
10	Mon	0930hrs	6.92	2137hrs	6.78	
11	Tue	1031hrs	6.33	2231hrs	6.35	
12	Wed	1150hrs	5.88	2339hrs	6	Close 0045hrs
13	Thu	*****	***	1314hrs	5.74	
14	Fri	0106hrs	5.89	1425hrs	5.87	
15	Sat	0225hrs	6.07	1524hrs	6.13	
16	Sun	0325hrs	6.36	1612hrs	6.38	
17	Mon	0412hrs	6.61	1650hrs	6.59	Open 0200hrs
18	Tue	0453hrs	6.81	1723hrs	6.79	
19	Wed	0530hrs	6.95	1754hrs	6.97	
20	Thu	0606hrs	7.01	1825hrs	7.1	
21	Fri	0642hrs	6.98	1855hrs	7.14	Close 2100hrs
22	Sat	0717hrs	6.87	1926hrs	7.1	
23	Sun	0751hrs	6.7	1957hrs	6.99	Open 0600hrs
24	Mon	0824hrs	6.48	2029hrs	6.82	
25	Tue	0901hrs	6.24	2106hrs	6.59	Close 2315hrs
26	Wed	0944hrs	5.97	2148hrs	6.34	
27	Thu	1036hrs	5.73	2240hrs	6.12	
28	Fri	1139hrs	5.58	2342hrs	6.02	
29	Sat	*****	***	1257hrs	5.63	
30	Sun	0054hrs	6.11	1407hrs	5.9	

Schedule 2 – Operating times

December

Date	Day	High Water	Height	High Water	Height	Open/close
1	Mon	0204hrs	6.42	1507hrs	6.27	Open 0001hrs
2	Tue	0306hrs	6.81	1601hrs	6.67	
3	Wed	0403hrs	7.2	1651hrs	7.02	
4	Thu	0458hrs	7.51	1738hrs	7.3	
5	Fri	0553hrs	7.69	1824hrs	7.49	Close 2045hrs
6	Sat	0647hrs	7.73	1909hrs	7.57	
7	Sun	0740hrs	7.6	1953hrs	7.52	
8	Mon	0833hrs	7.31	2038hrs	7.35	Open 0630hrs
9	Tue	0924hrs	6.91	2124hrs	7.08	
10	Wed	1018hrs	6.46	2211hrs	6.75	
11	Thu	1118hrs	6.05	2304hrs	6.4	
12	Fri	****	***	1224hrs	5.76	Close 0115hrs
13	Sat	0006hrs	6.1	1327hrs	5.63	
14	Sun	0120hrs	5.92	1428hrs	5.66	
15	Mon	0230hrs	5.91	1522hrs	5.83	
16	Tue	0330hrs	6.03	1609hrs	6.08	Open 0130hrs
17	Wed	0423hrs	6.2	1651hrs	6.37	
18	Thu	0509hrs	6.39	1728hrs	6.63	
19	Fri	0550hrs	6.53	1803hrs	6.84	Close 2000hrs
20	Sat	0628hrs	6.62	1837hrs	6.99	
21	Sun	0705hrs	6.65	1910hrs	7.07	
22	Mon	0739hrs	6.65	1944hrs	7.1	Open 0530hrs
23	Tue	0815hrs	6.62	2019hrs	7.08	
24	Wed	0853hrs	6.53	2055hrs	7	
25	Thu	0932hrs	6.39	2134hrs	6.88	Close 2345hrs
26	Fri	1015hrs	6.19	2217hrs	6.73	
27	Sat	1103hrs	5.99	55326hrs	6.58	
28	Sun	****	***	1200hrs	5.83	
29	Mon	0004hrs	6.45	1310hrs	5.8	
30	Tue	0115hrs	6.4	1421hrs	5.93	
31	Wed	0228hrs	6.49	1527hrs	6.21	

Wash Cockle and Mussel Byelaw: Schedule 2 restrictions

Schedule 2 of the Wash Cockle and Mussel Byelaw 2021

The following restrictions apply to fishing in The Wash and should be read in conjunction with relevant permit conditions.



Restrictions in The Wash

The following restrictions apply in relation to fishing for, taking or removing from the fishery, cockles or mussels from within The Wash in accordance with paragraph 4(c) of this byelaw.

Vessel length restrictions

1. Subject to paragraph 2 of this schedule, a person must not use a vessel which is more than 14 metres in overall length to fish for, take or remove, from a fishery cockles or mussels.
2. Paragraph 1 of this schedule does not apply where an exemption existed immediately preceding this byelaw under Regulation 5 (vessel length restrictions) of the Wash Fishery Order and only to the effect and extent that that exemption applied.
3. Any change in beneficial or legal ownership of a vessel exempt under paragraph 2 of this schedule shall cause the exemption to end unless ownership is transferred within the same business and with the agreement of the Authority.

Daily catch restrictions (cockles)

4. A person must not, unless otherwise specified in a flexible permit condition, in any one calendar day, fish for, take (save for doing so with the intention of riddling or otherwise sorting catch in accordance with paragraph 12 of this schedule) or remove from the fishery more than 2000 kilograms or the maximum weight or volume of cockles specified in a permit condition, by hand.
5. For the purpose of determining the weight of catch, no allowance will be given for the weight of any containers or sand or other material.

Daily catch restrictions (mussels)

6. A person must not, unless otherwise specified in a flexible permit condition, in any one calendar day, fish for, take (save for doing so with the intention of riddling or otherwise sorting catch in accordance with paragraph 12 of this schedule) or remove from the fishery:
 - a) more than 4000 kilograms of mussels from a harvestable mussel fishery; or
 - b) more than 8000 kilograms of mussels from a re-laying mussel fishery.
7. For the purpose of determining the weight of catch no allowance will be given for the weight of any containers or sand or other material.

Wash Cockle and Mussel Byelaw: Schedule 2 restrictions

8. A person must not fish for, take or remove any mussels from a harvestable mussel fishery if, during the same calendar day, that person has fished for, taken or removed any mussels from a re-laying mussel fishery.
9. A person must not fish for, take or remove any mussels from a re-laying mussel fishery if, during the same calendar day, that person has fished for, taken or removed any mussels from a harvestable mussel fishery.

Mussel dredge restrictions

10. A person must not use a mussel dredge with an inside opening of more than one metre to fish for, take or remove from a fishery, mussels unless otherwise specified in a permit condition.
11. A person must not use more than two mussel dredges at any one time to fish for, take or remove mussels from a fishery unless otherwise specified in a permit condition.

Sorting of catch

12. A person must immediately return to the sea or seabed any material rejected through the sorting of catch of any bivalve mollusc, as near as possible to the place from which it was taken and must spread it thinly and evenly over that area.

Transshipping prohibition

13. A person must not tranship or otherwise relocate any cockles or mussels, or containers of any description containing any cockles or mussels, caught from the fishery from one vessel to another.

Requirement to land (cockles)

14. Subject to paragraph 15 of this schedule, a person fishing for cockles must:
 - a) take any cockles caught straight to port;
 - b) land such cockles immediately; and
 - c) not leave cockles on the sand or deposited in the water in bags or any other container for later collection.
15. Paragraph 14 of this schedule does not apply where a person has written authorisation from the Authority to re-lay cockles onto private shellfish aquaculture areas prior to them being landed.
16. A person must not land cockles on more than one occasion during one calendar day.

Wash Cockle and Mussel Byelaw: Schedule 2 restrictions

Dual fishing prohibition

17. A person must not fish for, take, or remove, from a fishery any cockles or mussels under the authority of a permit if, on the same calendar day that person fishes for, takes or removes cockles or mussels from:
- a) within The Wash under the authority of a separate permit issued under this byelaw; or
 - b) within the Wash or the le Strange Estate other than under the authority of a permit.
18. A person must not have on board any bottom towed gear which could be used to fish for, take or remove from the fishery within The Wash any cockles or mussels when fishing for, taking or removing from a fishery any cockles or mussels from a hand-work fishery within The Wash.

Standard bags

19. A person must not land mussels or cockles unless the species caught is contained in a bag which must:
- a) be of the following dimensions:
 - i. 60 centimetres or 120 centimetres in height;
 - ii. 97 centimetres in depth;
 - iii. 97 centimetres in width; and
 - b) have the words 'Wash Fishery' written on at least two sides with lettering which is at least ten centimetres tall.

Prop-washing

20. A person fishing for cockles must not use an anchor which affixes the vessel to the bottom of the seabed during the practice of prop-washing;
21. A person must spread any cockles dislodged by prop-washing thinly and evenly over the ground, as near as possible to the area from which they were dislodged before leaving the area fished.