

# Weekly Notice of Operations (WNoO)

## Dogger Bank C Offshore Windfarm

### Construction Operations

**DOGGER BANK**  
WIND FARM

Issue Date: 02<sup>nd</sup> June 2025

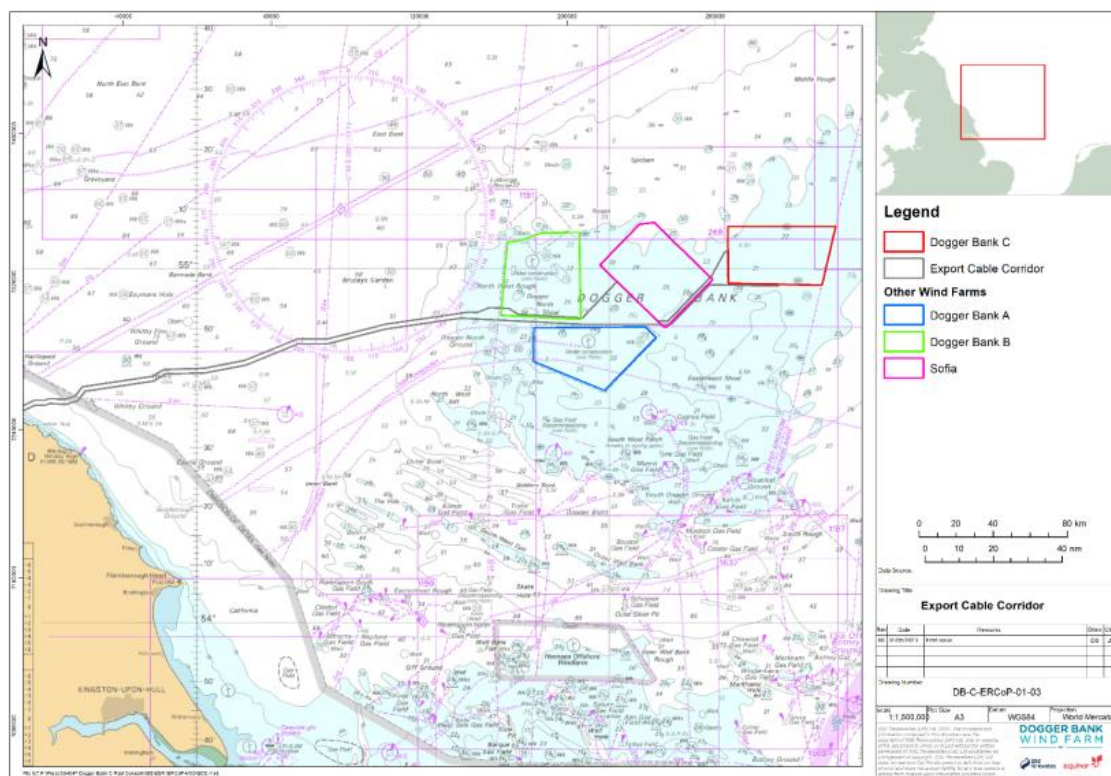
LF700013-CST-DOG-NOT-0099 Weekly Notice of Operations – Rev 036

Work Planned for the Period 02.06.2025 to 08.06.2025

Offshore Construction of the Dogger Bank C Offshore Wind Farm commenced on the 07th of October 2024.

This notice will be updated weekly, giving information on the progress and resources involved in the offshore project. The intention is to give an overview of activities and vessels involved. Should anyone have questions regarding the operations, we kindly ask you to put them forward well in advance.

Dogger Bank Offshore Wind Project is a development project within the Renewables offshore wind sector for the three owners; SSE, Equinor and Vårgrønn. Dogger Bank C is the third stage of development in the Dogger Bank Zone in the United Kingdom. It will have a consented capacity of up to 1.2 GW.



**Figure 1** Dogger Bank C Offshore Wind Farm Location

## 1. Contact Details for Marine Coordination

The following contact can provide more information if required. Please note that specific queries can also be addressed to the relevant vessel or shore-based representatives.

# Weekly Notice of Operations (WNoO)

## Dogger Bank C Offshore Windfarm

### Construction Operations

**DOGGER BANK**  
**WIND FARM**

Issue Date: 02<sup>nd</sup> June 2025

LF700013-CST-DOG-NOT-0099 Weekly Notice of Operations – Rev 036

Duty Marine Coordinator Telephone Number	+44 (0) 7586 332078
Emergency Contact (24/7)	+44 (0) 7586 332078
Email for Marine Coordinator	<a href="mailto:gm_dbmcc@equinor.com">gm_dbmcc@equinor.com</a>
Address	Dogger Bank MCC, Dogger Bank Operations & Maintenance Base, Enterprise Way, East Side, Port of Tyne, South Shields NE33 5SW

## 2. Ongoing Operations

### 2.1 Monopile (MP) Installation

The Offshore installation vessel, **HLV Seaway Strashnov**, will install mono-pile foundations in the Dogger Bank C offshore windfarm construction area, commencing on the 22<sup>nd</sup> of April 2025, continuing until approximately Q4 2025. The works will be continuous 24 hours a day.

The installed monopiles will be marked with temporary lighting with the following characteristics:

- Flashing (FI) Yellow (Y) 2.5 seconds (s)
- IALA Availability Category 2 (not less than 99.0%)
- 360° visibility – up to two lights per structure may be used to achieve this
- At least 2 nm range.

During operations, the **HLV Seaway Strashnov** will be restricted in ability to manoeuvre as defined under COLREGs (International Regulations for Preventing Collisions at Sea 1972) and will display the appropriate day shapes and lights. The vessels will also transmit an Automatic Identification System (AIS) message.

### 2.2 Transition Piece (TP) Installation

The installation vessel **HLV Seaway Alfa Lift** will install the foundation Transition Pieces (TP) on the pre-installed Monopiles (MP) in the Dogger Bank C offshore windfarm construction area, commencing on the 19<sup>th</sup> of May 2025, continuing until approximately Q4 2025. The works will be continuous 24 hours a day.

### 2.3 OSP Commissioning works

The Dogger Bank C Offshore Substation Platform (OSP) will undergo a Commissioning phase within the Dogger Bank C construction area. The Jack up Vessel (JUV) **HEA Hydra** will jack up and connect to the DBC OSP by a fixed gangway. The **HEA Hydra** will remain on site during the Commissioning phase, acting as the accommodation platform and OSP emergency evacuation vessel.

# Weekly Notice of Operations (WNoO)

## Dogger Bank C Offshore Windfarm

### Construction Operations

Issue Date: 02<sup>nd</sup> June 2025

LF700013-CST-DOG-NOT-0099 Weekly Notice of Operations – Rev 036

The works will commence on approximately the 15<sup>th</sup> of May 2025, continuing until approximately 11<sup>th</sup> of September 2025. The works will be continuous 24 hours a day. A chart of the DBC construction area and the installation location is provided below.

During operations, a Statutory Safety zone of 500m radius will be in place around the **HEA Hydra** for the duration of the Commissioning phase of the DBC OSP. Vessels are requested to maintain a minimum safe passing distance of 1km from the **HEA Hydra** during the operation.

The Platform Supply Vessel (PSV) **FS Balmoral** will support the **HEA Hydra**, carrying out regular supply runs to the offshore site.

During the Commissioning phase, there will be a requirement for rope access works to be carried out to the external parts of the OSP and Jacket. During these Over the Side (OTS) works the Dogger Bank OWF Guard vessel **Jacobus** will act as the Emergency Response Rescue Vessel (ERRV).

## 2.5 Scour Protection Installation

The Fall Pipe Vessel **Flintstone** will continue scour protection installation operations at numerous locations in the array area, operations resumed on the 21<sup>st</sup> of May 2025, and will continue until approximately the 30<sup>th</sup> of June 2025. The work will be continuous, 24 hours a day.

During operations, the **Flintstone** will be restricted in ability to manoeuvre as defined under COLREGs (International Regulations for Preventing Collisions at Sea 1972) and will display the appropriate day shapes and lights. The vessels will also transmit an Automatic Identification System (AIS) message.

## 3. Installation progress

The table below presents the coordinates of the DBC WTG locations and gives an update on the progress of installation of various stages of construction. All locations referenced to WGS 84

ID	Structure	Latitude (WGS84)	Longitude (WGS84)	Filter Layer Installed	MP Foundation Installed	TP Installed
A01	WTG	54°59.05'N	002°36.89'E			
B01	WTG	54°58.89'N	002°39.79'E			
B02	WTG	54°59.53'N	002°38.84'E			
B03	WTG	55°00.17'N	002°37.89'E			
B04	WTG	55°00.81'N	002°36.95'E	Y		
C01	WTG	54°58.84'N	002°43.10'E	Y	Y	
C02	WTG	54°59.48'N	002°42.16'E	Y		
C03	WTG	55°00.12'N	002°41.21'E	Y		
C04	WTG	55°00.76'N	002°40.27'E	Y		
C05	WTG	55°01.40'N	002°39.32'E	Y		
C06	WTG	55°02.04'N	002°38.38'E	Y		
C07	WTG	55°02.68'N	002°37.43'E	Y		
D01	WTG	54°58.77'N	002°46.43'E	Y	Y	

# Weekly Notice of Operations (WNoO)

## Dogger Bank C Offshore Windfarm Construction Operations

**DOGGER BANK**  
WIND FARM

**Issue Date: 02<sup>nd</sup> June 2025**

**LF700013-CST-DOG-NOT-0099 Weekly Notice of Operations – Rev 036**

D02	WTG	54°59.42'N	002°45.48'E	Y		
D03	WTG	55°00.06'N	002°44.54'E	Y		
D04	WTG	55°00.70'N	002°43.60'E	Y		
D06	WTG	55°01.98'N	002°41.71'E	Y		
D07	WTG	55°02.62'N	002°40.76'E	Y		
D08	WTG	55°03.26'N	002°39.81'E	Y		
D09	WTG	55°03.90'N	002°38.87'E	Y		
D10	WTG	55°04.54'N	002°37.92'E	Y		
D11	WTG	55°05.18'N	002°36.97'E	Y		
E01	WTG	54°58.72'N	002°49.75'E	Y	Y	
E02	WTG	54°59.36'N	002°48.81'E	Y	Y	
E03	WTG	55°00.00'N	002°47.86'E	Y	Y	
E04	WTG	55°00.64'N	002°46.92'E	Y	Y	Y
E05	WTG	55°01.28'N	002°45.98'E	Y		
E06	WTG	55°01.92'N	002°45.03'E	Y		
E07	WTG	55°02.56'N	002°44.09'E	Y		
E08	Spare	55°03.20'N	002°43.14'E	Y		
E09	WTG	55°03.84'N	002°42.20'E	Y		
E10	WTG	55°04.48'N	002°41.25'E	Y		
E11	WTG	55°05.13'N	002°40.30'E	Y		
E12	WTG	55°05.77'N	002°39.35'E	Y		
F01	WTG	54°58.65'N	002°53.08'E	Y	Y	
F02	WTG	54°59.30'N	002°52.14'E	Y	Y	
F03	WTG	54°59.94'N	002°51.20'E	Y	Y	
F04	WTG	55°00.58'N	002°50.25'E	Y	Y	
F05	WTG	55°01.22'N	002°49.31'E	Y		
F06	WTG	55°01.86'N	002°48.37'E	Y		
F07	WTG	55°02.50'N	002°47.42'E	Y		
F08	WTG	55°03.15'N	002°46.48'E	Y		
F09	WTG	55°03.79'N	002°45.53'E	Y		
F10	WTG	55°04.43'N	002°44.59'E	Y		
F11	WTG	55°05.07'N	002°43.64'E	Y		
OSP	OSP	55°01.34'N	002°42.65'E	Y	Y (Jacket)	Y (Topside)
P01	WTG	55°02.47'N	002°50.86'E	Y		
P02	WTG	55°01.83'N	002°51.80'E	Y		
P03	WTG	55°01.19'N	002°52.74'E	Y		
P04	WTG	55°00.55'N	002°53.68'E	Y		
P05	WTG	54°59.90'N	002°54.63'E	Y	Y	Y
P06	WTG	54°59.26'N	002°55.57'E	Y	Y	Y
P07	WTG	54°58.62'N	002°56.51'E	Y	Y	Y
P08	WTG	54°57.50'N	002°56.54'E	Y	Y	Y

# Weekly Notice of Operations (WNoO)

## Dogger Bank C Offshore Windfarm Construction Operations

**DOGGER BANK**  
WIND FARM

Issue Date: 02<sup>nd</sup> June 2025

LF700013-CST-DOG-NOT-0099 Weekly Notice of Operations – Rev 036

P09	WTG	54°57.51'N	002°55.24'E	Y	Y	
P10	WTG	54°57.53'N	002°53.90'E	Y	Y	Y
P11	WTG	54°57.55'N	002°52.56'E	Y	Y	
P12	WTG	54°57.56'N	002°51.22'E	Y	Y	
P13	WTG	54°57.58'N	002°49.88'E	Y		
P14	WTG	54°57.59'N	002°48.54'E	Y	Y	
P15	WTG	54°57.61'N	002°47.20'E	Y		
P16	WTG	54°57.62'N	002°45.86'E	Y		
P17	WTG	54°57.64'N	002°44.52'E	Y	Y	
P18	WTG	54°57.65'N	002°43.18'E	Y		
P19	WTG	54°57.67'N	002°41.84'E			
P20	WTG	54°57.68'N	002°40.50'E			
P21	WTG	54°57.70'N	002°39.16'E			
P22	WTG	54°57.71'N	002°37.82'E			
P23	WTG	54°57.72'N	002°36.48'E	Y		
P24	WTG	54°57.74'N	002°35.14'E	Y		
P25	WTG	54°58.49'N	002°34.84'E	Y		
P26	WTG	54°59.26'N	002°34.83'E	Y		
P27	WTG	55°00.03'N	002°34.82'E	Y		
P28	WTG	55°00.80'N	002°34.81'E	Y		
P29	WTG	55°01.57'N	002°34.81'E	Y		
P30	WTG	55°02.34'N	002°34.80'E	Y		
P31	WTG	55°03.11'N	002°34.79'E	Y		
P32	WTG	55°03.88'N	002°34.78'E	Y		
P33	WTG	55°04.66'N	002°34.77'E	Y		
P34	WTG	55°05.43'N	002°34.77'E	Y		
P35	WTG	55°06.20'N	002°34.76'E	Y		
P36	WTG	55°06.94'N	002°35.12'E	Y		
P37	WTG	55°06.95'N	002°36.46'E	Y		
P38	WTG	55°06.95'N	002°37.81'E	Y		
P39	WTG	55°06.95'N	002°39.15'E	Y		
P40	WTG	55°06.96'N	002°40.50'E	Y		
P41	WTG	55°06.96'N	002°41.84'E	Y		
P42	WTG	55°05.71'N	002°42.69'E	Y		
P43	Spare	55°05.68'N	002°46.13'E	Y		
P44	Spare	55°05.04'N	002°47.08'E	Y		
P45	Spare	55°04.40'N	002°48.02'E	Y		
P46	Spare	55°03.75'N	002°48.97'E	Y		
P47	WTG	55°03.11'N	002°49.91'E	Y		



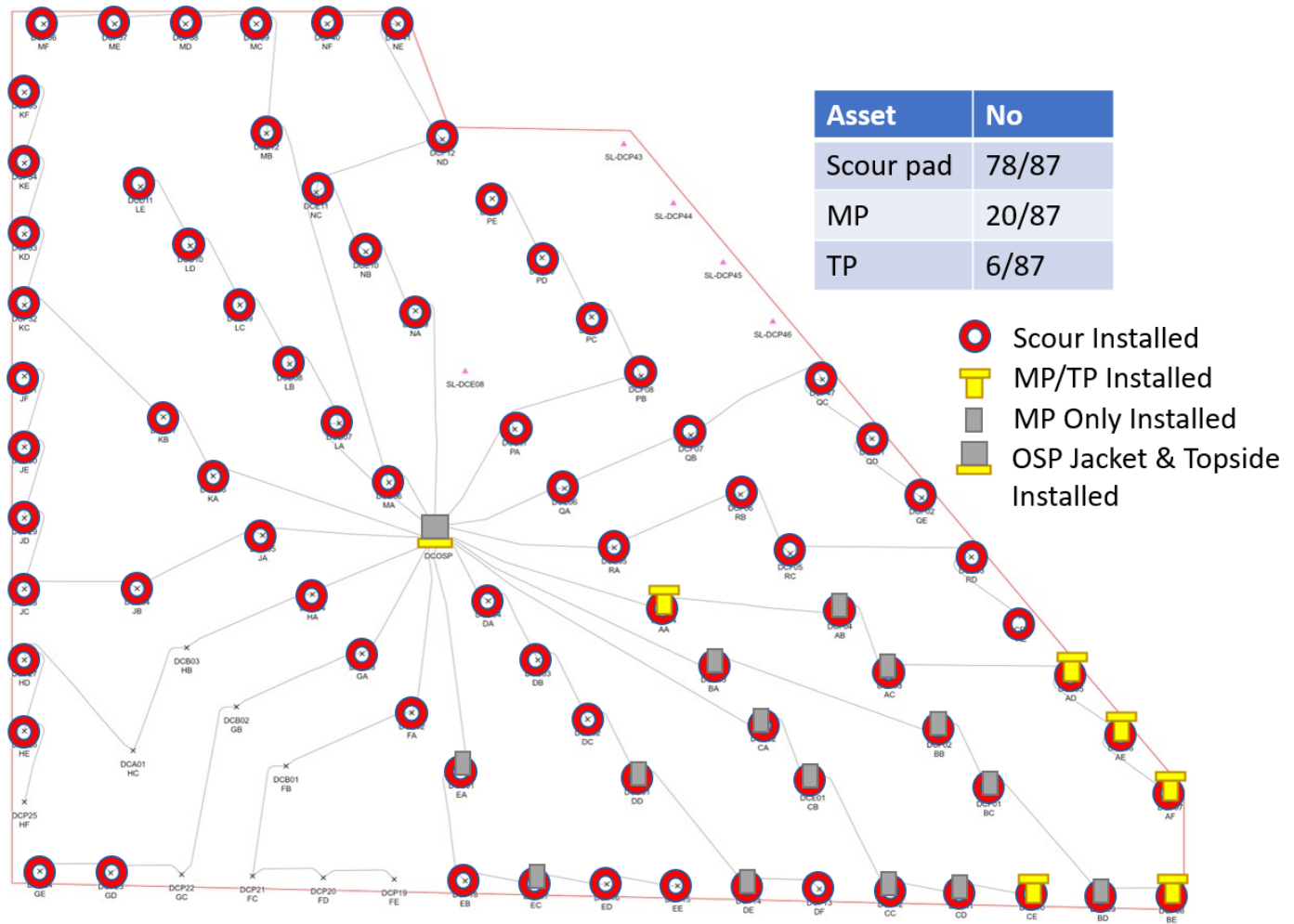
# Weekly Notice of Operations (WNoO)

## Dogger Bank C Offshore Windfarm

### Construction Operations

Issue Date: 02<sup>nd</sup> June 2025

LF700013-CST-DOG-NOT-0099 Weekly Notice of Operations – Rev 036



#### 4. General Safety Advice

All vessels engaged in construction activities will exhibit the appropriate lights and shapes, defined by the International Regulations for Preventing Collisions at Sea 1972, relative to their operations. Vessels will also transmit an Automatic Identification System (AIS) message.

#### 5. Safety Zones within the Dogger Bank Offshore Windfarm Construction Area

The Secretary of State for Business, Energy and Industrial Strategy (BEIS) has approved the use of safety zones under the Energy Act 2004 for the installation of wind turbines and offshore transformer module foundations/substructures within the Dogger Bank Offshore Windfarm.

The Secretary of State has declared safety zones under the following terms:

During Construction

# Weekly Notice of Operations (WNoO)

## Dogger Bank C Offshore Windfarm Construction Operations

**DOGGER BANK**  
WIND FARM

**Issue Date: 02<sup>nd</sup> June 2025**

**LF700013-CST-DOG-NOT-0099 Weekly Notice of Operations – Rev 036**

---

- 500 metres radius around each wind turbine, offshore transformer module and/or their substructures and foundations comprising the Dogger Bank Offshore Wind Farm whilst work is being performed as indicated by the presence of construction vessels.

(It is noted that the 500 metre safety zones will roll with the installation activity with no more than two construction vessels working at any one time. Vessels are advised that anchors associated with the construction vessels may extend outside of the 500 metre safety zone.)

- 50 metres radius around each wind turbine, offshore transformer module and/or their substructure and foundations installed but waiting to be commissioned as part of the Dogger Bank Offshore Wind Farm.

Positions of foundations installed will be published in the current Weekly Notice of Operations. Only vessels associated with the Dogger Bank Offshore Wind Farm construction may enter statutory safety zones.

The guard vessel and Marine Coordination centre will be responsible for monitoring and policing the safety zones; and can be contacted directly for advice. The guard vessel will be on site 24/7 whilst safety zones are in place.

Further information on the application of safety zones can be obtained from the Marine Coordinator. Users are advised to keep clear of construction activities, including safety zones, within the Dogger Bank Offshore Windfarm construction area in line with Marine Guidance Note (MGN) 372.

ALL VESSELS ARE REQUESTED to give all construction and support vessels a wide berth.

MARINERS ARE REMINDED to navigate with caution and keep continued watch on VHF Ch. 70 / 16 when navigating the area

### **6. Fisheries Liaison**

Fisheries liaison associated with the activity will be co-ordinated by Brown and May Marine Ltd. For any commercial fishery queries please contact:

**Alex Winrow-Giffin, Brown & May Marine Ltd**

[Alex@brownmay.com](mailto:Alex@brownmay.com)

**Tel: 01379 870181 Mob: 07760 160039**

**Zoë Lawrence - Brown & May Marine Ltd**

[zoe@brownmay.com](mailto:zoe@brownmay.com)

**Mob: 07923 138175**

The Export Cable installation campaign is anticipated to be completed ~ April 2025.

# Weekly Notice of Operations (WNoO)

## Dogger Bank C Offshore Windfarm

### Construction Operations

**DOGGER BANK**  
WIND FARM

**Issue Date: 02<sup>nd</sup> June 2025**

**LF700013-CST-DOG-NOT-0099 Weekly Notice of Operations – Rev 036**

---

#### **7. Distribution List**

A central list of recipients is maintained by the Marine Coordinator. If you are not the appropriate recipient of these notices or do not wish to receive the notices in the future, please contact us at the address included in Section 1 of this notice.

#### **8. Website**

The official website of Dogger Bank Offshore Windfarm Limited can be found at:

[Weekly documents Archive - Dogger Bank Wind Farm](#)

This contains all Notices to Mariners (NtM) published by DBOWF and all Weekly Notices of Operations, together with a large amount of general information about the Project.

Details of NtM published by DBOWF can also be found on the Kingfisher Bulletin interactive chart at:

[View all Notices \(kingfisherbulletin.org\)](#)



# Weekly Notice of Operations (WNoO)





## Dogger Bank C Offshore Windfarm

### Construction Operations

**DOGGER BANK**  
WIND FARM

Issue Date: 02<sup>nd</sup> June 2025

LF700013-CST-DOG-NOT-0099 Weekly Notice of Operations – Rev 036

<div>Vessels &amp; Operators</div> <div>DOGGER BANK WIND FARM</div> <div>Vessel Data Matrix DBC OWF</div>									
No	Vessel Picture	Vessel Name / Flag	Type / Function	Operator	Contact / contact details	Call sign / MMSI / IMO	LOA (m) Beam (m) Draft (m)	Date on Site	Marine Licence applicable
1		Jacobus GB	Guard Vessel	Van Laar Maritime	Lindsay Pein Van Laar Maritime B.V. Strandweg 7 1976 BS IJmuiden The Netherlands www.vanlaarmaritime.com Tel: +31 255 518449	MIVU7 / 232034467 / 9910284	37.5m x 8.7m x 4.4m	03.08.2022	OFTO/Non-OFTO
2		HLV Seaway Strashnov CY	Heavy Lift Foundation installation vessel	Seaway 7	Arno van Graafeiland Seaway 7 arno.vangraafeiland@Seaway7.com Tel +31 79 363 78 70 Mobile +31 61 44 80 696	5BNL2 / 212905000 / 9452701	183m x 47m x 14m	22.04.2025	Non-OFTO
3		HLV Seaway Alfa Lift CY	Heavy Lift Foundation installation vessel	Seaway 7	Arno van Graafeiland Seaway 7 arno.vangraafeiland@Subsea7.com Tel +31 79 363 78 70 Mobile +31 61 44 80 696	5BFL6 / 209178000 / 9889980	217.88m x 56m x 9.6m	19.05.2025	Non-OFTO
4		Flintstone NL	Fall pipe rock installation	DEME	Bart Van Den Eynde / Florence van Meenen Mobile: +32 476 86 84 61 / +32 470 91 34 24 Email: Vanden.Eynde.Bart@deme-group.com Van.Meenen.Florence@deme-group.com	PBZD / 245861000 / 9528433	154.6m x 32.2m x 7.74m	21.05.2025	Non-OFTO

# Weekly Notice of Operations (WNoO)



## Dogger Bank C Offshore Windfarm

### Construction Operations

**DOGGER BANK**  
WIND FARM

Issue Date: 02<sup>nd</sup> June 2025

LF700013-CST-DOG-NOT-0099 Weekly Notice of Operations – Rev 036

Vessels & Operators									
Vessel Data Matrix DBC OWF									
No	Vessel Picture	Vessel Name / Flag	Type / Function	Operator	Contact / contact details	Call sign / MMSI / IMO	LOA (m) Beam (m) Draft (m)	Date on Site	Marine Licence applicable
5		HEA Hydra PA	JUV Accommodation platform	ZMI HEA	Vladyslav Pefti Tel: +971 562 191 161 vladyslav.pefti@zmiglobal.com	3FEI3 / 370239000 / 9669093	76m x 36m x 6.5m	18.05.2025	OFTO
6		FS Balmoral UK	PSV	Fletcher Group	Vladyslav Pefti Tel: +971 562 191 161 vladyslav.pefti@zmiglobal.com	MATE6 / 232007020 / 9402330	77m x 16m x 6.8m	18.05.2025	OFTO