

Ørsted - East Coast Operational Assets

Notice to Mariners

Period of Notice: July 2025

Version: 6

Table of Contents

1	Introduction.....	3
2	Key Contacts	4
3	Amendments from Previous Revision.....	4
	Notice to Mariners Summary.....	4
	BMU2 Export Cable Repair.....	4
4	Notice to Mariners Summary:	5
5	Race Bank – Notice to Mariners	6
5.1	Lighting and Marking Status.....	6
5.2	Other Operations	6
5.2.1	Subsea inspections of foundations via ROV	6
5.2.2	- ROW AIM and Consent MBES Survey - Full Survey	7
6	Westermose Rough – Notice to Mariners.....	8
6.1	Lighting and Marking Status.....	8
6.2	Other Operations	8
6.3	Cable Exposures	8
7	Lincs – Notice to Mariners.....	9
7.1	Lighting and Marking Status.....	9
7.2	Other Operations	9
7.2.1	-LIC AIM and Consent MBES & SSS Survey	9
7.2.2	Main Component Exchange	10
8	Gunfleet Sands – Notice to Mariners.....	12
8.1	Lighting and Marking Status.....	12
8.2	Other Operations	12
8.3	Cable exposure.....	12
9	Hornsea One – Notice to Mariners.....	13
9.1	Lighting and Marking Status.....	13
9.2	Other Operations	13
9.2.1	C23 Requested 200m Risk of Dropped Objects	13
9.2.2	C23 Blade Repair Campaign 500m Safety Zone requested.....	13
9.2.3	Cargo Drone Operations	14
9.2.4	C23 Blade Exchange	15
9.2.5	Hornsea 1 and Hornsea 2 Wave buoy Removal	16
10	Hornsea Two – Notice to Mariners.....	18
10.1	Lighting and Marking Status.....	18
10.2	Other Operations	18
10.3	H37 Requested 200m Risk of Dropped Objects	18
10.4	Cargo Drone Operations	18
10.4.1	MBES Survey	19
10.4.1	Hornsea 1 and Hornsea 2 Wave buoy Removal	20

1 Introduction

Ørsted is an offshore wind farm owner and operator with ten operational wind farms in UK waters. Of these ten, the following offshore wind farms are located off the East Coast of England:

- Gunfleet Sands
- Westernmost Rough
- Race Bank
- Lincs
- Hornsea One
- Hornsea Two

The purpose of this monthly Notice to Mariners (NtM) is to ensure that mariners are aware of any non-routine operations across the East Coast assets that could pose a risk to other sea users. Safety is paramount to Ørsted and this notice should assist in ensuring that both mariners and the Ørsted operational team can operate safely offshore. This NtM will provide:

- A regular, clear, and consistent overview of non-routine operations
- Updates relating to lighting and marking statuses.
- Key contact details
- Access to detailed site information and figures
- Clarity on when Safety Zones and recommended safe separation distances are in force or requested.
- Updates on cable burial status where available.



This NtM **will not provide:**

- Information relating to routine maintenance carried out by Crew Transfer Vessels (CTV) or Service Operation Vessels (SOV).
- Any information relating to non-Ørsted-owned assets, e.g. export cables owned by OFTOs.
- Any information relating to Ørsted-owned offshore wind farms that are currently in development or construction, or to offshore wind farms that are not owned by Ørsted.

Subsea Cables

Subsea cables are installed across all offshore wind farms and marked on Admiralty charts. Ørsted-owned subsea cables are also delineated on [KIS-ORCA](https://kis-orca.org/downloads/) charts and are available for download in Fishing Plotter file format <https://kis-orca.org/downloads/>. Mariners should note the following advice from NP 100 The Mariners Handbook "Every care should be taken to avoid anchoring, trawling, fishing, dredging, drilling, or carrying out any other activity in the vicinity of cables which might damage them." This warning is repeated on Admiralty charts and in MIN 604 issued by the MCA.

Within a 50m radius of the base of offshore wind turbines and offshore substations cable exposures are relatively common and relatively dynamic. In line with this, it is neither practical nor beneficial for this NtM to promulgate a running commentary detailing evolving cable burial status within these radii. Ørsted recommended that mariners always maintain a safe separation distance of >50m from wind turbines and substations. This NtM details sections of exposed cable that are located outwith these 50m radii. It is important to note that the position and extent of any cable exposures reported within this NtM is limited to the burial status observed when the survey was undertaken. Cable burial status will evolve over time, often rapidly. Mariners should not assume otherwise. Please review the site-specific pages below for further information.

Should mariners require further information, including any data in a Fish Plotter compatible format, please contact the Commercial Fisheries Manager Fisheries@orsted.com.

2 Key Contacts

For further information on any of the activities listed within this notice, please use the contact details listed below.

Site	Ørsted Mailbox/ Offshore Coordination	Fisheries Industry Representative
Race Bank	Phone: 07826 943808 Email: rowoffshorec@orsted.com	Ady Woods Phone: 07468 898948 Email: firwoods@hotmail.com
Westernmost Rough	Phone: 07867 674941 Email: wmroffshorec@orsted.com	Guy Pasco Phone: 07880 362082 Email: guy@seascopefisheries.co.uk
Lincs	Phone: 07766443319 Email: lincsoffshorec@orsted.com	Ady Woods Phone: 07468 898948 Email: firwoods@hotmail.com
Gunfleet Sands		Merlin Jackson Phone: 07989 520484 Email: merlinjackson@btinternet.com
Hornsea One	Phone: 07775005465 Email: HOWoffshoreC@orsted.com	Nick Garside Phone: 07538 827013 Email: nick.garside@live.co.uk
Hornsea Two	Phone: 07775005465 Email: HOW02offshoreC@orsted.com	Nick Garside Phone: 07538 827013 Email: nick.garside@live.co.uk

Company Fisheries Liaison Officer

The Ørsted Company Fisheries Liaison Officer can be contacted using the details below:

Lee Thompson Email: LEETH@orsted.com
Callum Vale Email: CAVAL@orsted.com

3 Amendments from Previous Revision

Added/Updated	Removed	Description
4		Notice to Mariners Summary
	10.4.1	BMU2 Export Cable Repair
10.4.2		MBES Survey HOW02
7.2.1		LIC AIM and Consent MBES & SSS Survey
5.2.2		ROW AIM and Consent MBES Survey - Full Survey
	9.2.5	MBES Survey HOW01

4 Notice to Mariners Summary:

Site	Lighting and Marking Status	Survey	Jack-Up Vessel	Other Works
Race Bank	OK	Yes	None	SIBW- ROV operations MBES Survey
Westermost Rough	D01 – Marine Lanterns Inoperable	None	Yes	E03 Generator Replacement**
Lincs	OK	Yes	None	MBES & SSS Survey Main Component Exchange**
Gunfleet Sands	OK	None	None	None
Hornsea One	P01 – Fog signal & marine lanterns inoperable. A32 – Fog signal & marine lanterns inoperable.	None	None	Blade repair campaign ** Cargo Drone Operations** Blade Exchange Campaign** Wave Buoy Removal*
Hornsea Two	T25 – Fog signal inoperable T21 – Marine Lanterns Inoperable	None	Yes	Cargo Drone Operations** MBES Survey Wave Buoy Removal*

* Formal 500m safety zone in place

° Licensable activity

** 500m safety distance requested

*** 100m safety distance requested

**** 250m safety distance requested

Status of lighting & marking is correct at time of issue; any changes will be communicated through an updated version being issued.

5 Race Bank – Notice to Mariners

5.1 Lighting and Marking Status

The lighting and/ or navigational warning systems are currently operational. No planned outages

5.2 Other Operations

5.2.1 Subsea inspections of foundations via ROV

Start date: 6th June 2025

Duration of work: 20 days (weather dependent)

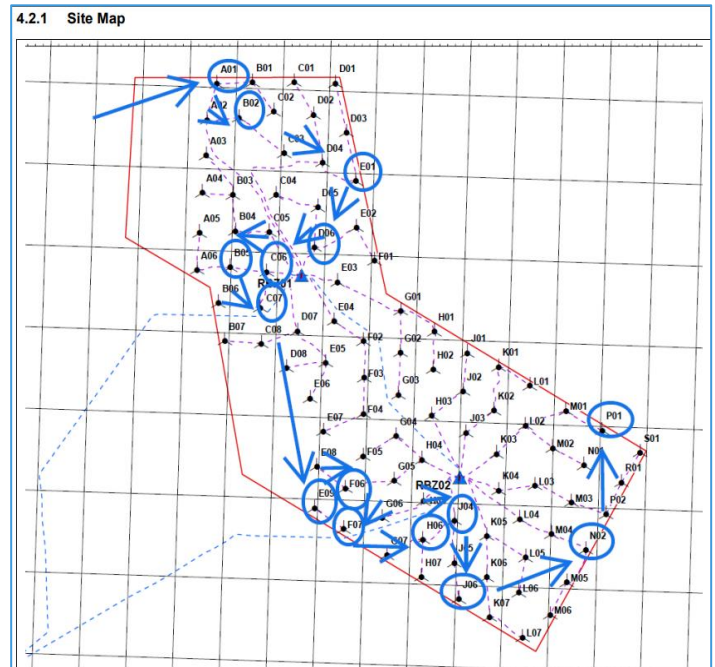
Description of work: Subsea inspections of foundations with ROV on 15 positions as shown in below table and diagram.

Is this a licensed activity: No.

Safety zone required: Mariners are requested to remain 250m away whenever Farra Emer has the ROV within the water.

General Information		Vessel Picture
Name:	FARRA EMER	
Flag:	United Kingdom	
Year Built:	2022	
MMSI Number:	232046091	
Call Sign:	MNDD6	
Vessel Contact Details		
Bridge:	7923971488	
Email:	emer@farramarine.com	

WTG ID	Degrees, Decimal Minutes	
	Latitude	Longitude
A01	53.33411655	0.7762638
B02	53.32735746	0.78455961
B05	53.29678767	0.78304605
C06	53.296093	0.79606591
C07	53.288751	0.79413995
D06	53.30145186	0.81283741
E01	53.31524459	0.82692654
E09	53.24826717	0.81564549
F06	53.25243969	0.82642054
F07	53.24415566	0.82615
H06	53.24251311	0.85446252
J04	53.24656964	0.86557392
J06	53.23063577	0.86792377
N02	53.24144139	0.91265081
P01	53.26589637	0.91734845



5.2.2 - ROW AIM and Consent MBES Survey - Full Survey


Start date: End June / start July

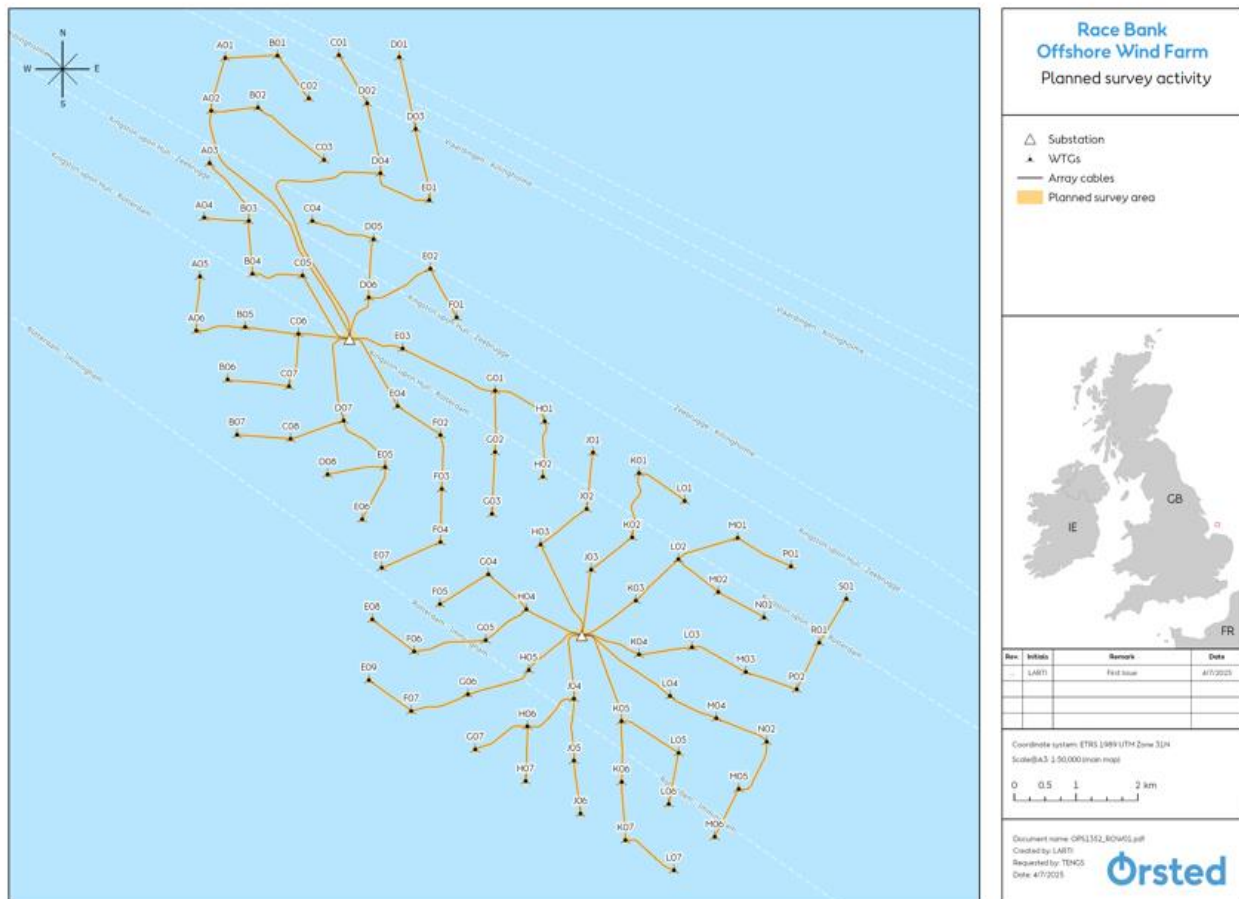
Duration of work: 7 Days

Description of work: Full site multi beam survey at turbine positions, along array cables and at the offshore substation. A side scan sonar survey will also be undertaken along all array cables in a 25m corridor.

Is this a licensed activity: Yes

Safety zone required: Survey work will include the side scan sonar being towed in the water column. Mariners are requested to remain a distance of 250m from the vessel when it is observed undertaking this survey work due to the equipment that will be in the water. The equipment will be lowered using a frame winch on the aft of the vessel.

General Information		Vessel Picture
Name:	Geosurveyor XXII	
Flag:	UK	
Year Built:	2009 / 2024	
MMSI Number:	235074917	
Call Sign:	2CQL8	
Vessel Contact Details		
Bridge:	+32 472 96 21 39	
Email:	bridge.geosurveyor22@geoxyz.eu	



6 Westernmost Rough – Notice to Mariners

6.1 Lighting and Marking Status

The lighting and/ or navigational warning systems are currently operational. No planned outages

6.2 Other Operations

6.2.1-WMR E03 Generator Replacement


Start date: 10th July 2025 (Estimated Start Date – possible further delays)

Duration of work 10 days (Weather Dependant)

Description of work: Exchange of major components at WTG location E03 using a Jack Up Vessel that will be lifted above the sea level and including use of a large crane.

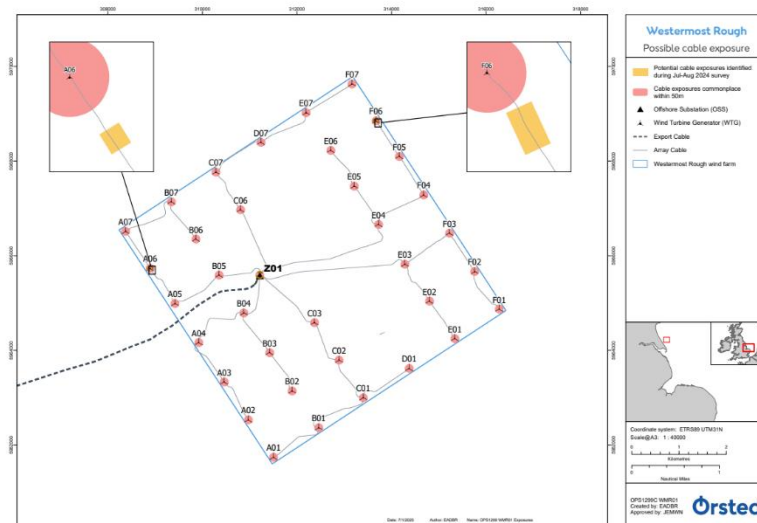
Is this a licensed activity: Yes- Covered by existing marine licence

Safety zone required: Mariners are requested to remain outside the safety zone of 500m whenever J/U Wind Energy is attached to a WTG. A minimum separation distance of 500m is also requested when the vessel is observed manoeuvring into position.

General Information		Vessel Picture
Name:	J/U Wind Energy	
Flag:	Denmark	
Year Built:	2011	
MMSI Number:	219032199	
Call Sign:	OUYH2	
Vessel Contact Details		
Bridge:	"Phone: +45 92 15 01 29 IP Phone: +45 82 13 64 43"	
Email:	master.windenergy@ziton.eu	

WMR - E03	53° 48' 27.825" N	000° 10' 45.829" E
------------------	-------------------	--------------------

6.3 Cable Exposures



As shown in the below chart, a survey undertaken in [July-August 2024] identified potential cable exposures at several locations beyond the commonplace exposures within the 50m radius around wind turbine and offshore substation foundations. The position and extent of the cable exposures shown in the below chart is limited to the burial status observed at the time of the survey. Cable burial status evolves over time, often rapidly. Mariners should not assume otherwise. Cable burial status is monitored periodically, and

further information will be provided following future survey campaigns. Ørsted advises mariners to maintain care when operating within windfarm array areas.

7 Lincs – Notice to Mariners

7.1 Lighting and Marking Status

The lighting and/ or navigational warning systems are currently operational. No planned outages

7.2 Other Operations

7.2.1 -LIC AIM and Consent MBES & SSS Survey


Start date: End June / start July

Duration of work: 7 Days

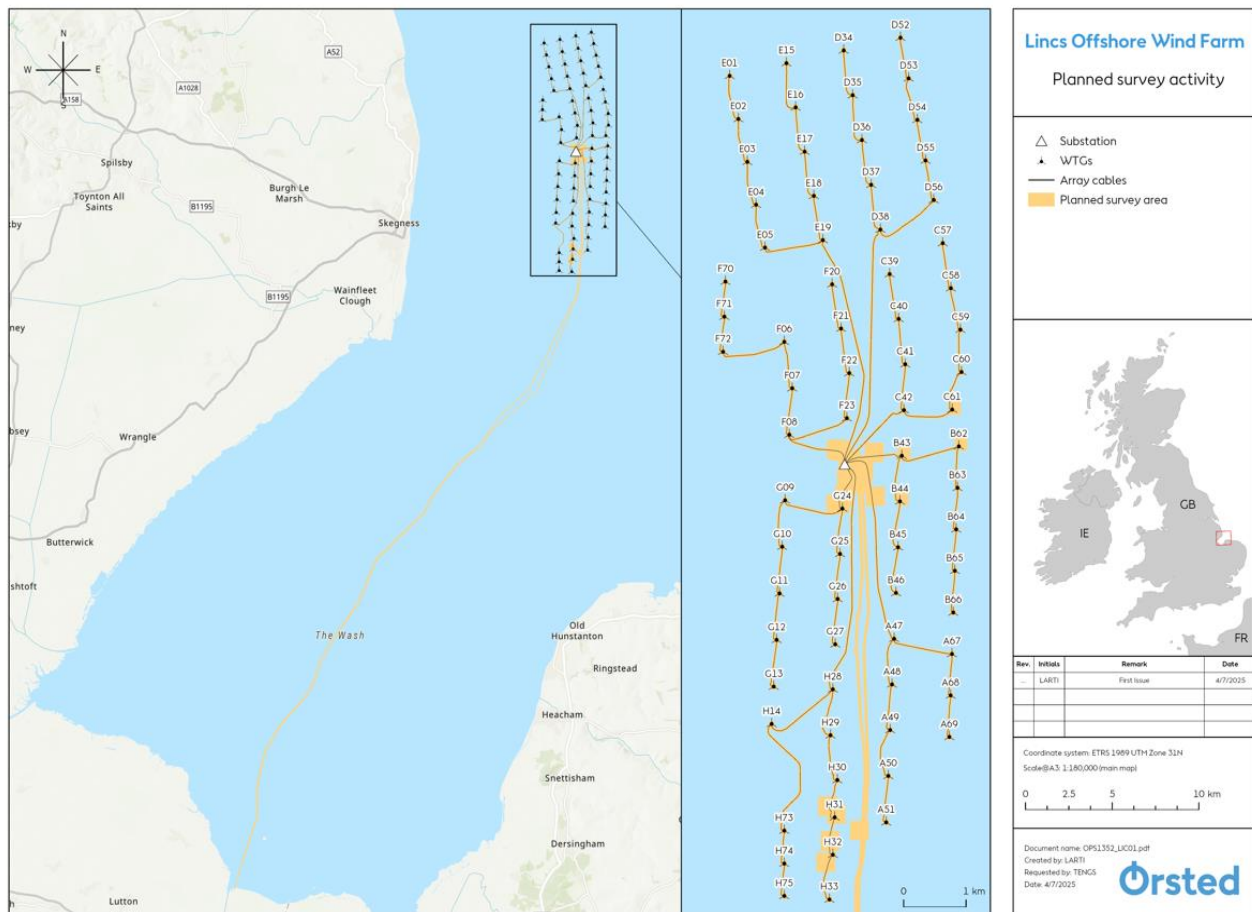
Description of work: Full site multi beam survey at turbine positions, along array cables and at the offshore substation. A side scan sonar survey will also be undertaken along all array cables in a 25m corridor.

Is this a licensed activity: Yes

Safety zone required: Survey work will include the side scan sonar being towed in the water column. Mariners are requested to remain a distance of 250m from the vessel when it is observed undertaking this survey work due to the equipment that will be in the water. The equipment will be lowered using a frame winch on the aft of the vessel.

General Information		Vessel Picture
Name:	Geosurveyor XXII	
Flag:	UK	
Year Built:	2009 / 2024	
MMSI Number:	235074917	
Call Sign:	2CQL8	
Vessel Contact Details		
Bridge:	+32 472 96 21 39	
Email:	bridge.geosurveyor22@geoxyz.eu	

LIC AIM and Consent MBES & SSS Survey



7.2.2 Main Component Exchange

Start date: 13th July 2025.

Duration of work: 16 days (weather dependent)

Description of work: Exchange of components at 4 WTG locations (LS74, LS42, LS62 and LS14). The works will use a Jack Up Vessel that will be lifted above the sea level and include use of a large crane.

Is this a licensed activity: Yes - covered by existing marine licence.

Safety zone required: Mariners must observe an approved safety zone of 500m whenever J/U Wind Pioneer is attached to a WTG. A minimum separation distance of 500m is also requested when the vessel is observed manoeuvring into position.

Vessel Information

General Information		Vessel Picture
Name	J/U WIND PIONEER	
Flag	Denmark	
Year Built	2010	
MMSI Number	219017684	
Call Sign	OWLA2	
Vessel Contact Details		
Bridge	+45 82 13 64 04 (VSAT Bridge)	
Master	Henrik Hentze and/or Simon Bové/ Michael Olsen	
Email	master.windpioneer@ziton.eu	

WTG ID	Degrees, Decimal Minutes	
	Latitude	Longitude
LS74	53° 07' 59.591" N	000° 28' 44.261" E
LS42	53° 11' 46.295" N	000° 30' 14.235" E
LS62	53° 11' 29.281" N	000° 31' 02.814" E
LS14	53° 09' 08.482" N	000° 28' 29.347" E

8 Gunfleet Sands – Notice to Mariners

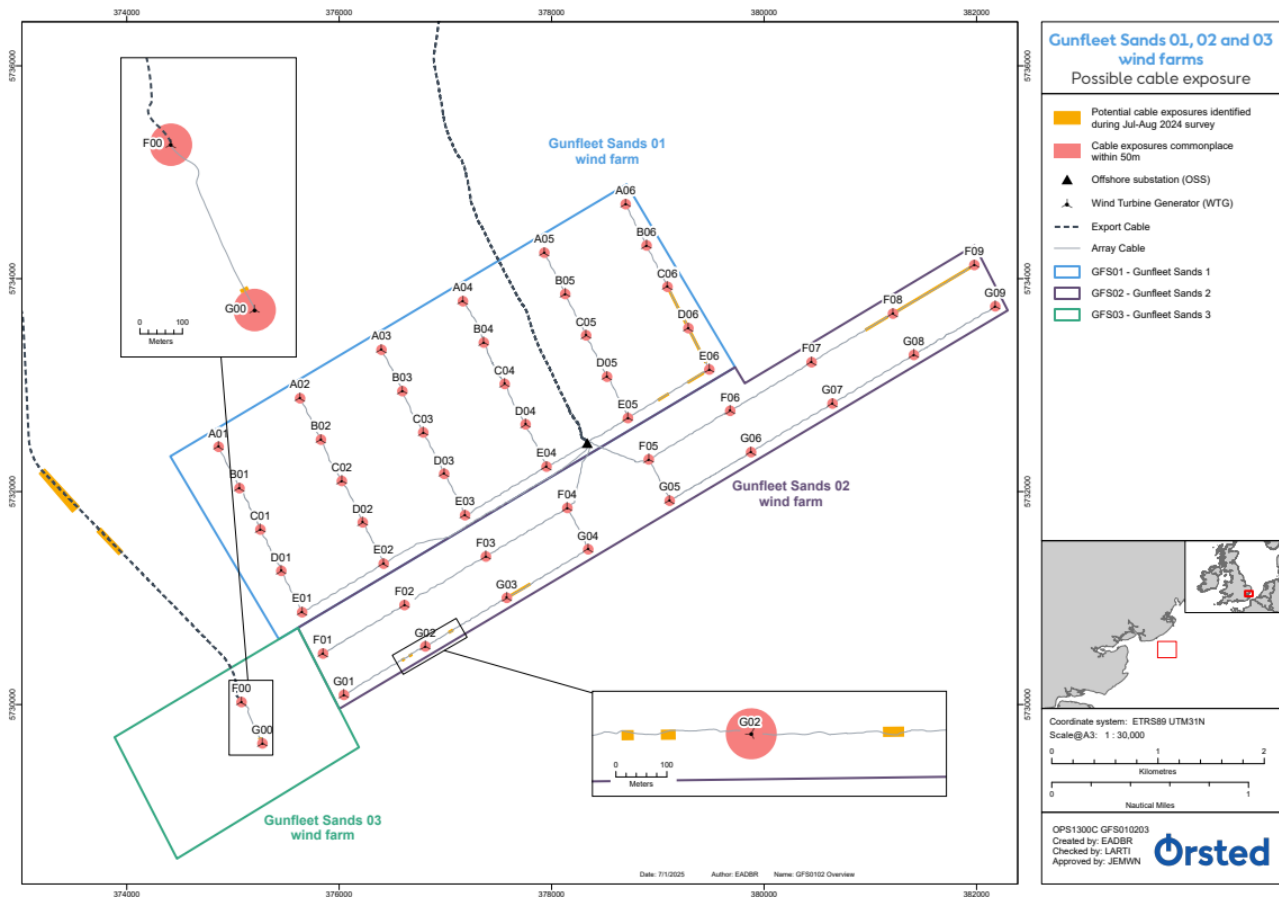
8.1 Lighting and Marking Status

The lighting and/ or navigational warning systems are currently operational. No planned outages.

8.2 Other Operations

8.3 Cable exposure

As shown in the below chart, a survey undertaken in [July-August 2024] identified potential cable exposures at several locations beyond the commonplace exposures within 50m radius around wind turbine and offshore substation foundations. The position and extent of the cable exposures shown in the below chart is limited to the burial status observed at the time of the survey. Cable burial status evolves over time, often rapidly. Mariners should not assume otherwise. Cable burial status is monitored periodically, and further information will be provided following future survey campaigns. Orsted advises mariners to maintain care when operating within our windfarm array areas.



As a result of a sedimentary surface and above average flow velocities, bathymetry within the Gunfleet Sands array area is constantly evolving.

9 Hornsea One – Notice to Mariners

9.1 Lighting and Marking Status

P01 – Fog signal & marine lanterns inoperable.
A32 – Fog signal & marine lanterns inoperable.

Turbines situated on the Hornsea Project One / Two adjoining perimeter.

Mariners are advised that the marine navigation lighting and foghorns on turbines situated on the Hornsea Project One / Two adjoining perimeter have now been extinguished. Marine navigation lighting will now alight the combined perimeter of Hornsea Project One and Two.

Please see the table below showing the locations where the foghorns/marine navigation lighting has been discontinued (indicated with an X)

Turbine	Marine Navigation Lights	Foghorns
K25	X	
Q20	X	X
C30	X	X
H27	X	X
P22	X	X
L20		X
K16		X
K10		X
M05		X

9.2 Other Operations

9.2.1 C23 Requested 200m Risk of Dropped Objects


Due to increased potential of dropped objects following damage located on a blade during routine inspections. Mariners are requested to remain at least 200m away from turbine C23.

9.2.2 C23 Blade Repair Campaign 500m Safety Zone requested

Mariners are requested to remain a distance of 500m when it is observed undertaking Rope Access works and where the vessel is pushed against a WTG. Campaign runs from the 30th of April for a duration of 12 days.

Start date:	30th April 25
Duration of work scope:	12 Days
Description of work:	C23 Blade Repair
Is this a licensed activity: Yes/No	
Safety zone required. If Yes what distance?	50m

Vessel Information

General Information		Vessel Picture
Name:	Northern Ocean	
Flag:	Denmark	
Year Built:	2018	
MMSI Number:	219034659	
Call Sign:		
OUS12		
Bridge:	162.050 MHz	
Party Chief:	122.230 MHz	
Email:	ocean.master@n-o-s.eu	

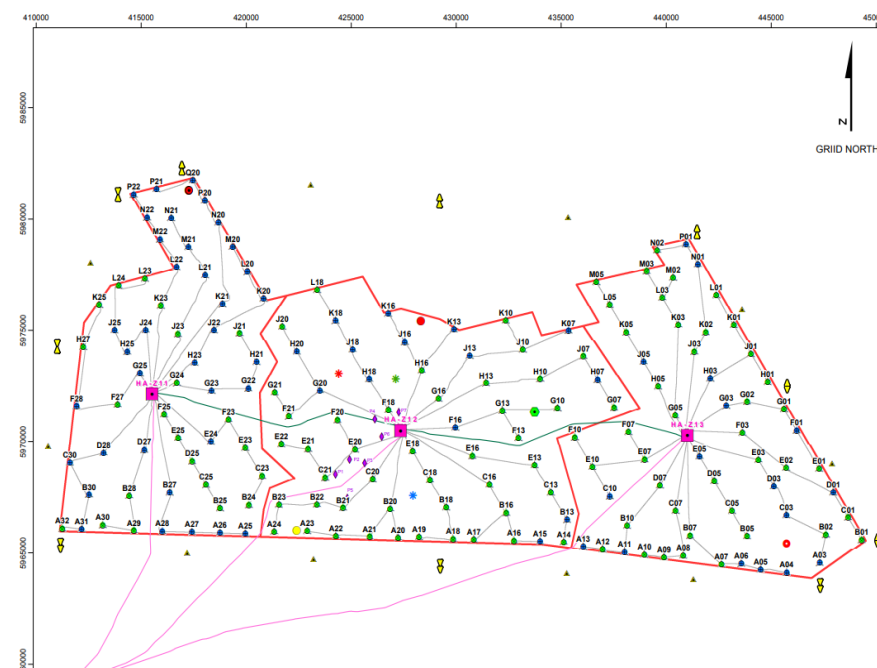
9.2.4 C23 Blade Exchange

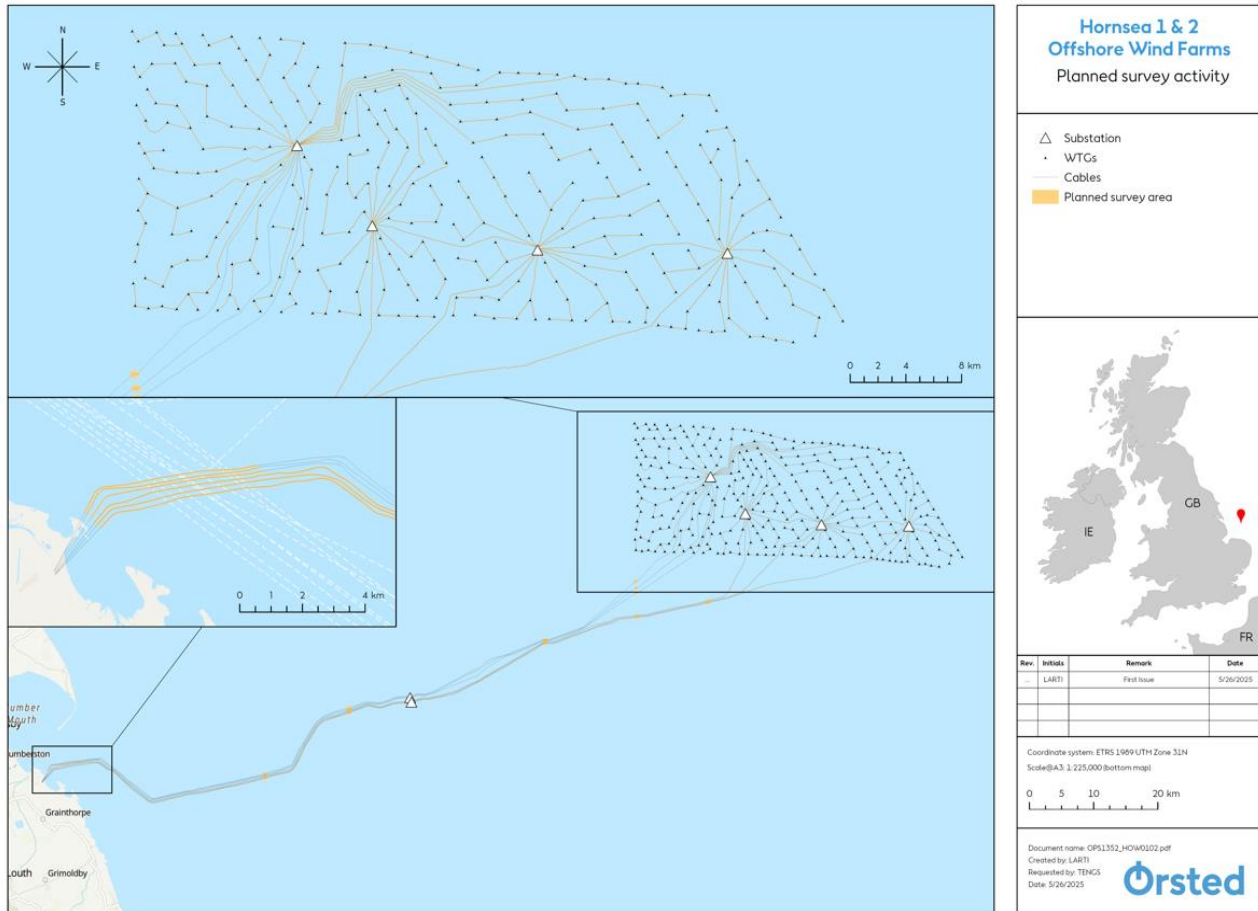
Start date:	21.06.2025 with potential delay
Duration of work scope:	2
Description of work:	Single blade exchange on location C23 - Deinstallation of blade - Installation of new blade
Is this a licensed activity: Yes/No	Yes
Safety zone required. If Yes what distance?	No

Vessel Information

General Information		Vessel Picture
Name:	Wind Energy	
Flag:	Denmark	
Year Built:	2011	
MMSI Number:	219032199	
Call Sign:	OUYH2	
Vessel Contact Details		
Bridge:	+870 773 249 017	
Party Chief:	+45 92 15 01 29	
Email:	master.windenergy@ziton.eu	

WTG	Degrees, Decimal Minutes	
ID	Latitude	Longitude
C23	53°51'30.170" N	1°47'42.830"E






9.2.5 Hornsea 1 and Hornsea 2 Wave buoy Removal

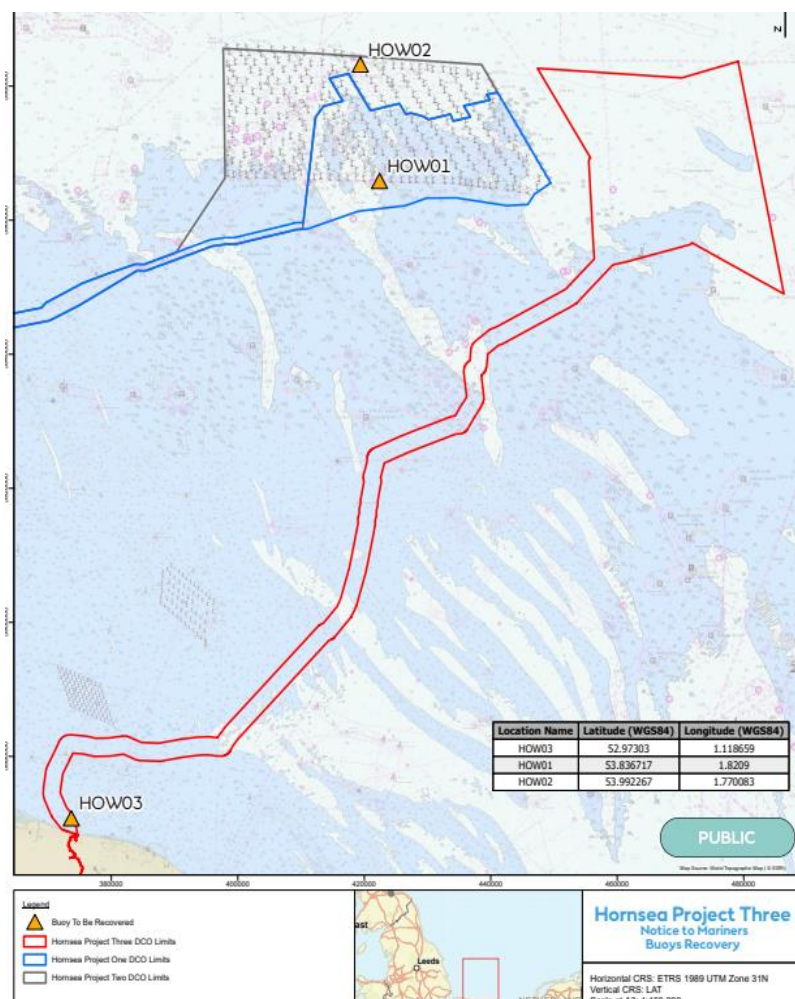
Start date:	15th to 25th July (dependant on weather and vessel availability.
Duration of work scope:	Expected to take 3 days
Description of work:	Recovery of the Fugro Oceanor Seawatch Midi wave buoy deployed at HOW03 site to support the HDD works at a near shore location with the following coordinates. The works will be conducted by the vessel Boemmelbas and Fugro staff. In the same trip the vessel will also recover the HOW01 and HOW02 wave buoys.
Is this a licensed activity: Yes/No	HOW01 & HOW02 - an exemption notification in place so there is no consent
Safety zone required. If Yes what distance?	500 metres

Vessel Information

General Information		Vessel Picture
Name:	FUGRO Boemmelbas	
Flag:	Norway	
Year Built:	2000	
MMSI Number:	IMO 9223148, MMSI 257180000	
Call Sign:	LLGZ	
Vessel Contact Details		
Bridge:	Erlend Nilssen, +47 4889 93118 +47 48893117	
Party Chief:	Hithin Nellyottum Kandy, +44 7990 774 511	
Email:	ms-bommelbas@eidesvikhavfiske.no	

Location:

Location Name	Latitude	Longitude	Depth Below Chart Datum [m]
HOW03	52.973030° N	1.118659° E	12m
HOW01	53.836717° N	1.820900° E	31m
HOW02	53.992267° N	1.770083° E	34m



10 Hornsea Two – Notice to Mariners

10.1 Lighting and Marking Status

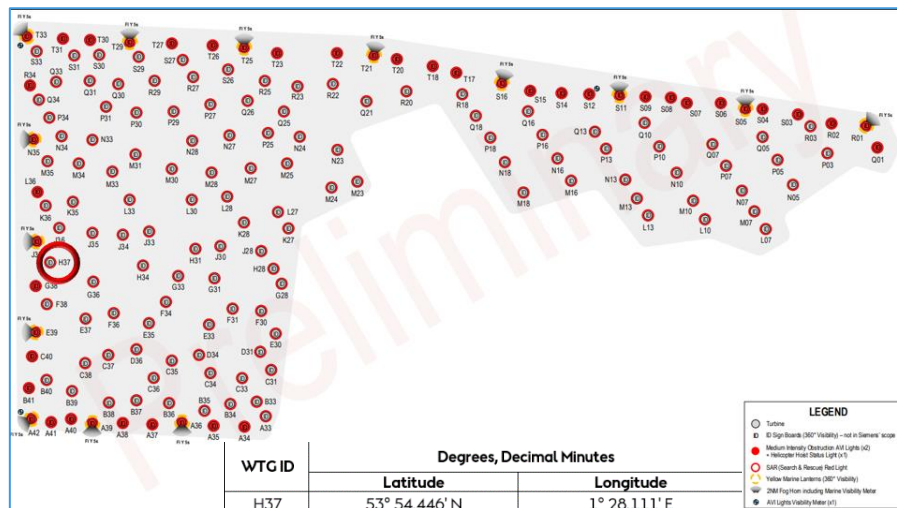
T25 Fog Signal inoperable
T21 Marine Lantern extinguished.

10.2 Other Operations

No Current projects/operations ongoing

10.3 H37 Requested 200m Risk of Dropped Objects

Due to increased potential of dropped objects following damage located on a blade during routine inspections. Mariners are requested to remain at least 200m away from turbine H37.



10.4 Cargo Drone Operations


Start date:	12/06/2025
Duration of work scope:	5 weeks
Description of work:	Cargo deployment from vessel to all wind turbines in both HOW01 & HOW02 using cargo drone.
Is this a licensed activity: Yes/No	No
Safety zone required. If Yes what distance?	Mariners are requested to remain a distance of 500m from vessel Haltbakk Star & Cargo Drones when they observed undertaking Cargo Drone Operations at a Wind Turbine.

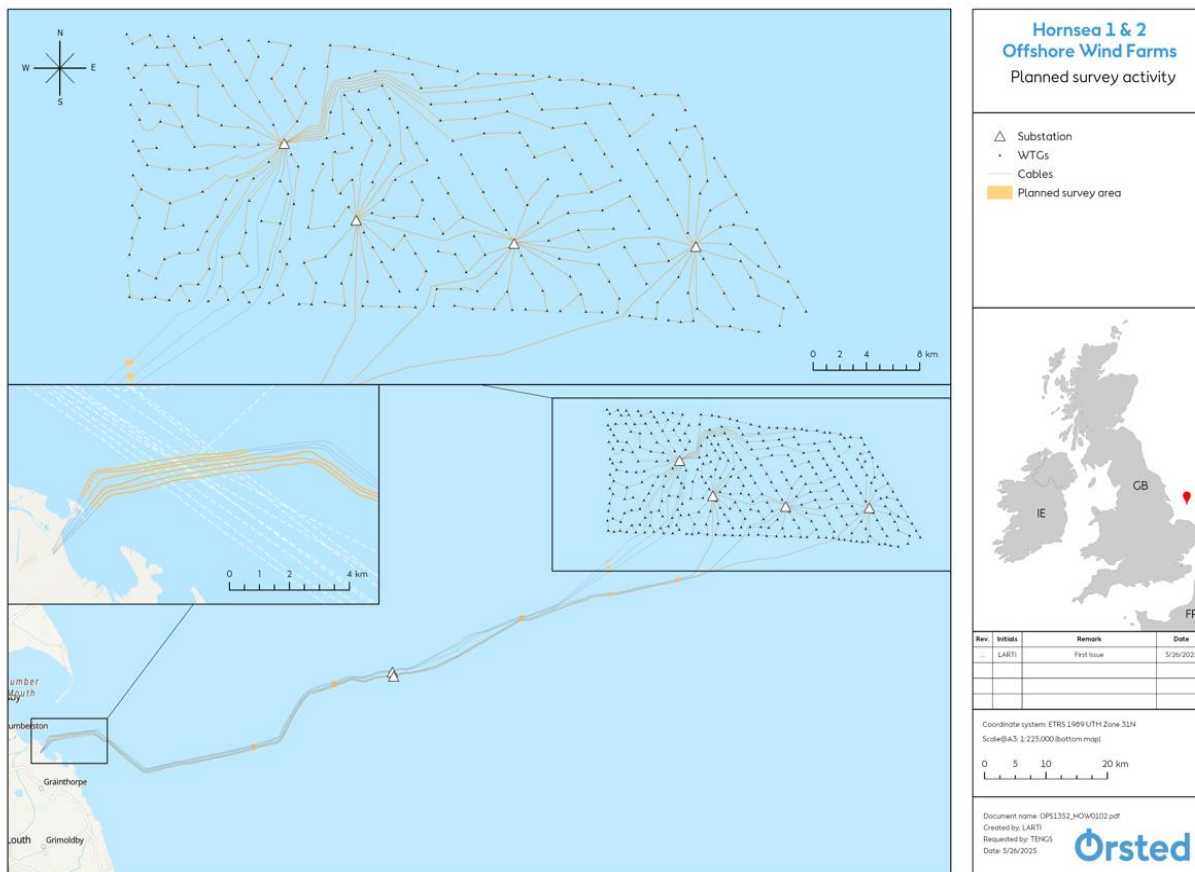
General Information		Vessel Picture
Name:	Haltbakk Star	
Flag:	Norway	
Year Built:	1975	
MMSI Number:	258129000	
Call Sign:	LAWW3	
Vessel Contact Details		
Bridge:	: +4790528328	
Party Chief:	Roy Kvernoe roy@haltbakkbunkers.no	
Email:	hstar@haltbakkbunkers.no	

10.4.1 MBES Survey

Start date:	23-Jul
Duration of work scope:	8 days
Description of work:	Full site MBES survey, turbines and array cables
Is this a licensed activity: Yes/No	
Safety zone required. If Yes what distance?	No

Vessel Information


General Information		Vessel Picture
Name:	Geo Ocean IV	
Flag:	Luxembourg	
Year Built:	1989 / 2019	
MMSI Number:	253641000	
Call Sign:	LXHD	
Vessel Contact Details		
Bridge:	Sat 24h: +870 773 809 453 Port number: +31 10 80 83 553	
Party Chief:		
Email:	bridge.geo-ocean4@geoxyz.eu	



10.4.1 Hornsea 1 and Hornsea 2 Wave buoy Removal

Start date:	15th to 25th July (dependant on weather and vessel availability.)
Duration of work scope:	Expected to take 3 days
Description of work:	Recovery of the Fugro Oceanor Seawatch Midi wave buoy deployed at HOW03 site to support the HDD works at a near shore location with the following coordinates. The works will be conducted by the vessel Boemmelbas and Fugro staff. In the same trip the vessel will also recover the HOW01 and HOW02 wave buoys.
Is this a licensed activity: Yes/No	HOW01 & HOW02 - an exemption notification in place so there is no consent
Safety zone required. If Yes what distance?	500 metres

Vessel Information

General Information		Vessel Picture
Name:	FUGRO Boemmelbas	
Flag:	Norway	
Year Built:	2000	
MMSI Number:	IMO 9223148, MMSI 257180000	
Call Sign:	LLGZ	
Vessel Contact Details		
Bridge:	Erlend Nilssen, +47 4889 93118 +47 48893117	
Party Chief:	Hithin Nellyyottum Kandy ,+44 7990 774 511	
Email:	ms-bommelbas@eidesvikhavfiske.no	

Location:

Location Name	Latitude	Longitude	Depth Below Chart Datum [m]
HOW03	52.973030° N	1.118659° E	12m
HOW01	53.836717° N	1.820900° E	31m
HOW02	53.992267° N	1.770083° E	34m

