

NOTICE TO MARINERS

DOGGER BANK WIND FARM

DOGGER BANK OFFSHORE WIND FARM

DATE OF ISSUE:	03/07/2025
NOTICE TO MARINER NUMBER	LF000016-SID-DOG-NOT-0007

Dogger Bank D Geotechnical Survey

LOCATION DESCRIPTION		Dogger Bank D Offshore Windfarm
COORDINATES WGS 84	DBD Offshore Windfarm	See Table 1 below
Start Date of survey works		04/07/2025

Description of Hazard/Operation

The Offshore Supply Vessel, **CONNECTOR** will be carrying out a short geotechnical survey for Dogger Bank D (DBD) Offshore Windfarm.

The works will be performed in a single campaign, commencing on the 4th July 2025, continuing until 6th July when all locations will have been surveyed. The works will be continuous, 24 hours a day. A chart of the **DBD** Area under consideration and table of bounding coordinates is provided below.

During operations, the **CONNECTOR** will be restricted in its ability to manoeuvre as defined under COLREGs (International Regulations for Preventing Collisions at Sea 1972) and will display the appropriate day shapes and lights. The vessel will also transmit an Automatic Identification System (AIS) message.

It is requested that all vessels maintain a minimum of 500m separation distance from the **CONNECTOR** and pass at reduced speed.

Contact Details

Marine Coordination Contact	Duty Marine Coordinator Tel: +44 (0) 7586 332078 gm_dbmcc@equinor.com
Fisheries Liaison Officer (FLO) CONTACT	Alex Winrow-Giffin, Brown & May Marine Ltd Alex@brownmay.com Tel: 01379 870181 Mob: 07760 160039 Zoë Lawrence - Brown & May Marine Ltd zoe@brownmay.com Mob: 07923 138175
Connector Contacts	Name: Bridge Duty Officer e-mail: bridge.connector@tsmvessel.com Name: Offshore Site Manager e-mail: Sitemanager1@geo.dk

NOTICE TO MARINERS

DOGGER BANK WIND FARM

Supporting Information

Vessel – Connector		Contact Details	
		C/S	OYOJ2
		MMSI/IMO	9244568
		Vessel Details	
		Length	90.2m
		Beam	19m
		Draft	6.2m
		Vessel Contact	Mobile: +45 60 33 50 18 Iridium: +88 1641706694 E-mail: master.connector@tsmvessel.com
		Office contact	E-mail: cfn@geo.dk

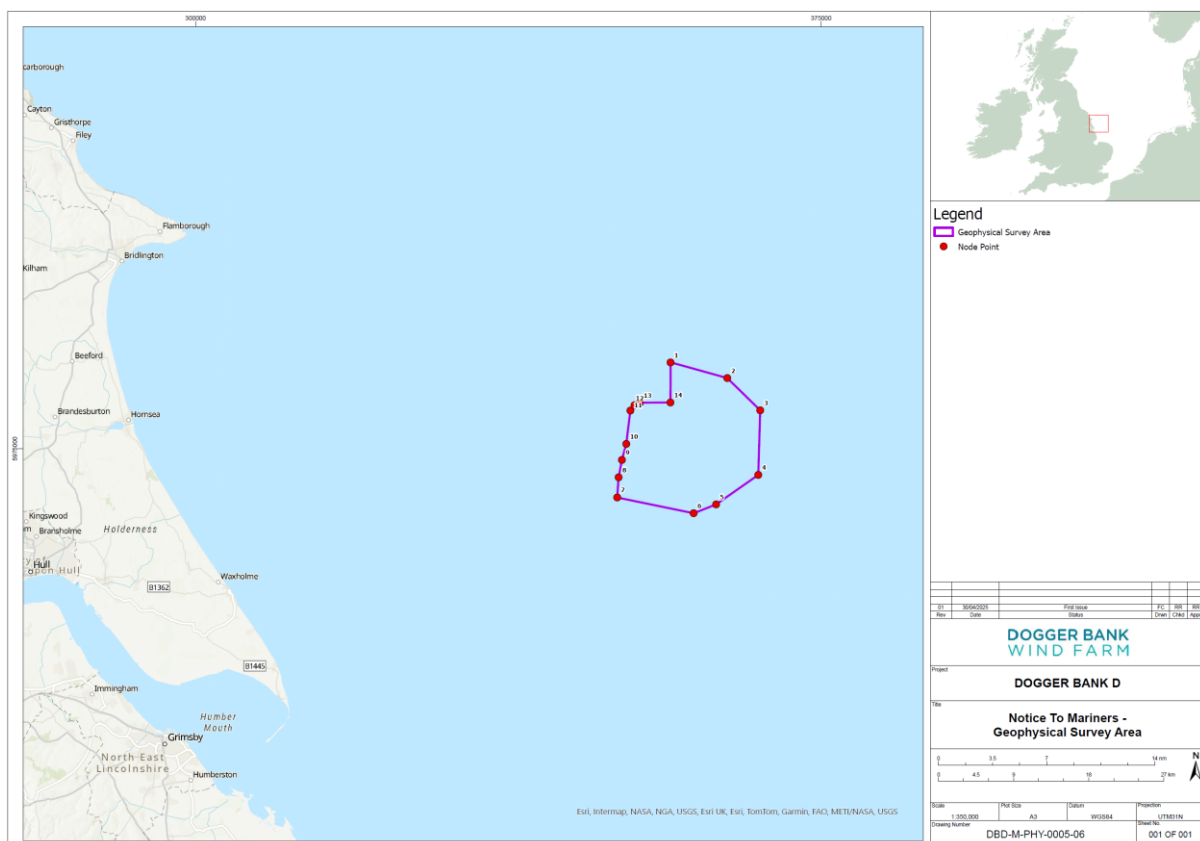


Figure 1: Dogger Bank D Geotechnical Survey Area

NOTICE TO MARINERS

DOGGER BANK
WIND FARM

ID	Degrees Decimal Minutes	
	Latitude	Longitude
1	53° 59.799' N	000° 49.055' E
2	53° 58.901' N	000° 55.326' E
3	53° 56.879' N	000° 59.039' E
4	53° 52.704' N	000° 59.027' E
5	53° 50.722' N	000° 54.513' E
6	53° 50.108' N	000° 52.087' E
7	53° 50.972' N	000° 43.682' E
8	53° 52.277' N	000° 43.766' E
9	53° 53.405' N	000° 44.065' E
10	53° 54.448' N	000° 44.488' E
11	53° 56.612' N	000° 44.822' E
12	53° 56.963' N	000° 45.248' E
13	53° 57.125' N	000° 45.826' E
14	53° 57.214' N	000° 49.178' E

Table 1: Dogger Bank D Coordinates for Geotechnical Survey Area