

LYNN AND INNER DOWSING OFFSHORE WIND FARMS

Notice to Mariners

04th July 2025 – 12th July 2025

Scope of Works – Major Component Replacements

Lynn and Inner Dowsing (LID) Offshore Wind Farm wish to advise mariners that the Jack Up vessel Wind Energy is planned to commence works within the boundary of the wind farm on 25th June 2025.

The duration of the work scope is expected to take 10 days, subject to weather conditions

The wind turbine locations are as below:

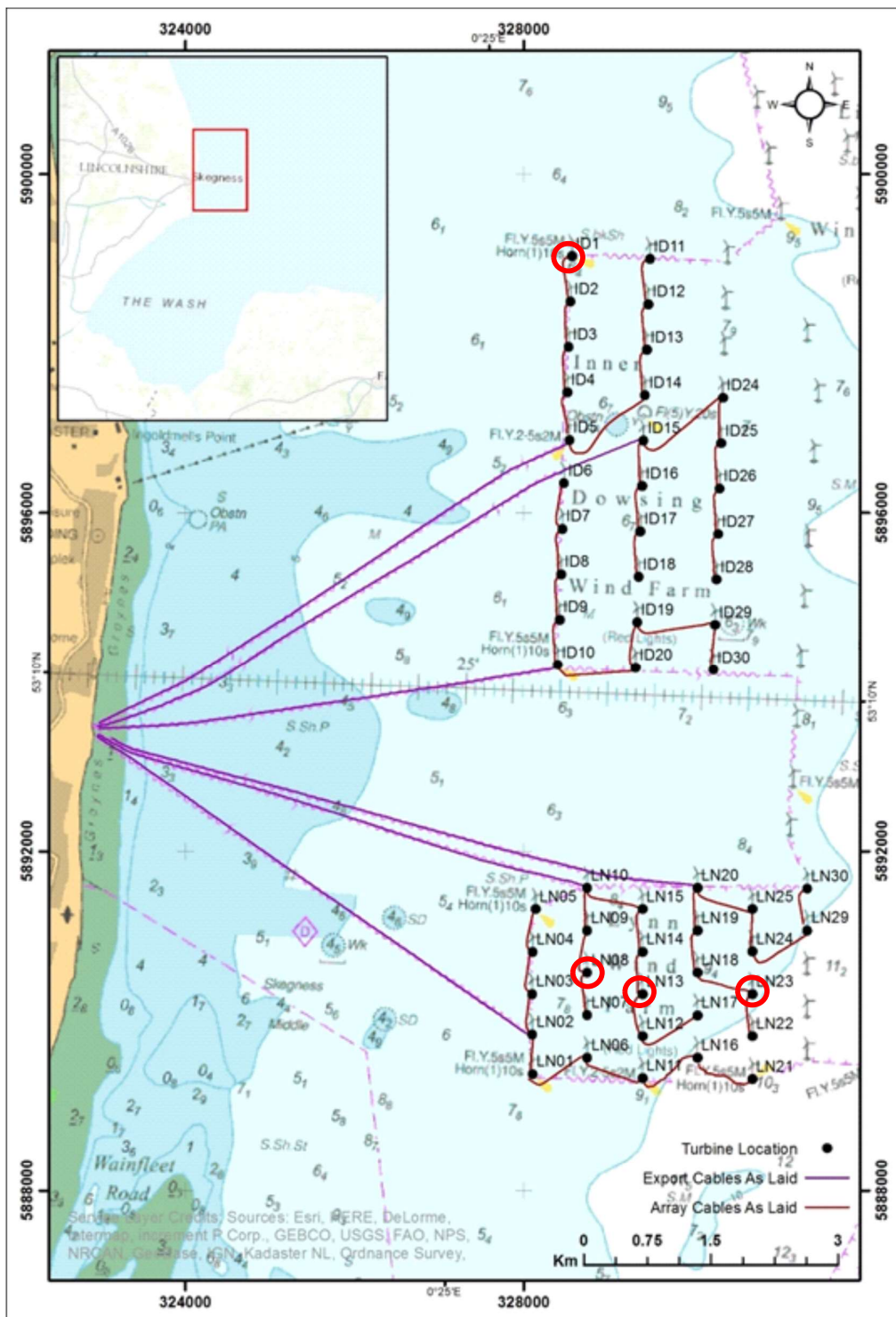
1. LN08 Latitude 53°08.216'N Longitude 000°26.393'E
2. LN13 Latitude 53°08.093'N Longitude 000°26.983'E
3. LN23 Latitude 53°08.119'N Longitude 000°28.148'E
4. ID01 Latitude 53°12.777'N Longitude 000°25.959'E



Vessel information

Name	Wind Energy
Call sign	OUYH2
MMSI	219032199
Length	120m
Beam	40m

Lynn and Inner Dowsing Wind Turbine Locations



Mariners should maintain a safe distance of 500m from the jack up vessel when it is on station adjacent to the wind turbine.

Mariners are advised to exert caution in the vicinity of the wind farm during this time and should communicate with the Siemens Gamesa Operational Marine Controller when operating near the site.

Siemens Gamesa Operational Marine Controller

Email: LIDOperationalmarinecontrol@siemensgamesa.com

Tel: 01472 806851 / 07921 249544

Radio Channel: 161.175MHz

Windfarm Liaison

Mariners are also advised that Lynn and Inner Dowsing inquiries should be directed to the Site Owners Representatives – XceCo.

Phone: 01472 806860

Email: flo@xceco.co.uk