



# Hornsea Three

## Notice to Mariners

Ref: 09439120\_A

Date: 30/07/2025

### 1 Introduction to proposed activities

#### Cable Installation Pre-lay Operations:

(Marine Licence: DCO/2016/00001)

Mariners are advised that during pre-lay trenching operations along the Western Export Cable Route, the Trailing Suction Hopper Dredger (TSHD) "Pedro Alvares Cabral" encountered an obstruction within the draghead. The obstruction appears to be a linear feature, possibly an out-of-service cable or similar object, which remains unsecured on the seabed and may pose a potential hazard.

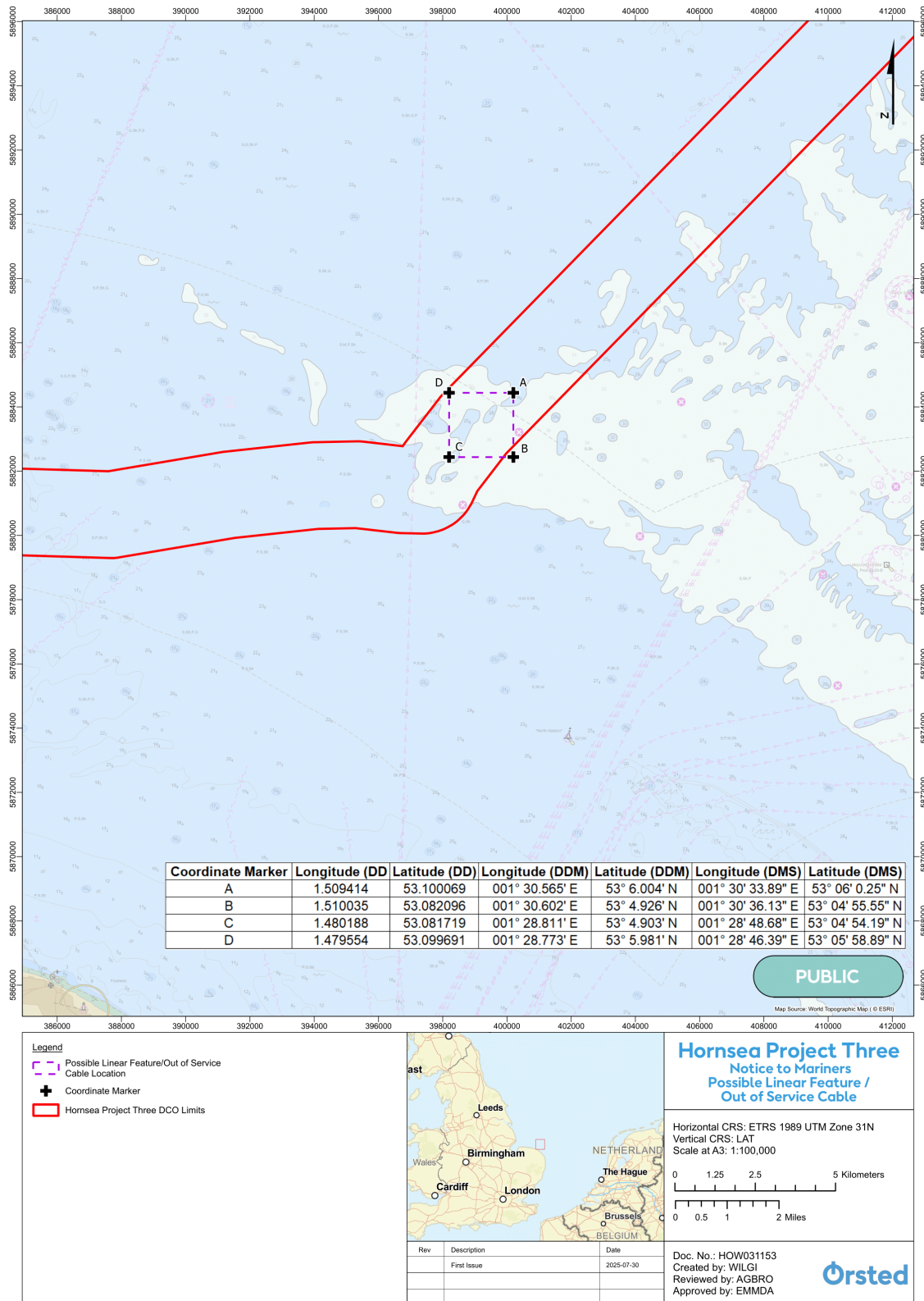
To ensure maritime safety, a precautionary 2 km x 2 km safety area is recommended around the affected area. Mariners are requested to refer to [Table 1](#) for the exact coordinates and [Figure 1](#) for a visual representation of the safety area.

### 2 Area of operations

All areas described in this notice are presented in [Figure 1](#) and coordinates of a 2km x 2km safety box are listed below in [Table 1](#).

**Table 1 Coordinates of 2km x 2km safety zone around Possible Linear Feature**

Coordinate Marker	Longitude (DD)	Latitude (DD)	Longitude (DDM)	Latitude (DDM)	Longitude (DMS)	Latitude (DMS)
A	1.509414	53.100069	001° 30.565' E	53° 6.004' N	001° 30' 33.89" E	53° 06' 0.25" N
B	1.510035	53.082096	001° 30.602' E	53° 4.926' N	001° 30' 36.13" E	53° 04' 55.55" N
C	1.480188	53.081719	001° 28.811' E	53° 4.903' N	001° 28' 48.68" E	53° 04' 54.19" N
D	1.479554	53.099691	001° 28.773' E	53° 5.981' N	001° 28' 46.39" E	53° 05' 58.89" N



**Figure 1 - Possible Linear Feature Safety Area**

## 3 Safety

To ensure maritime safety, a precautionary 2 km x 2 km safety area is recommended around the unsecured linear feature whilst further investigations are ongoing. Although not a confirmed risk to fishermen, the stability and position of the feature remain uncertain until secured. Hornsea Three advises all fishermen to exercise caution and avoid placing equipment in this area. Updates will follow should further information on the feature become available.

Hornsea Three vessels will maintain a listening watch on VHF Channels 12 and 16 while within the relevant port authority area and will actively transmit an AIS signal.

Note that the vessels when under work will have limited manoeuvrability and it is therefore requested that all vessels operating near the Hornsea Three vessels maintain a safe distance (at least 500m) and pass at minimum speed.

It is requested that anybody having knowledge of any potential objects submerged or moored on the seabed within the areas presented in [Figure 1](#) of this notice, which could be damaged or form a hazard to the Hornsea Three vessels, advise the Hornsea Three Onshore Fisheries Liaison of its position and nature.

## 4 Immediate contacts

Please contact the vessel on VHF Channel 12 and 16 (or by the details provided in [Section 7](#) of this notice) in the first instance.

<b>Marine and Helicopter Coordination Centre (MHCC)</b>	24/7 contact	
	Tel: +44 (0) 20 7 8111169	E-mail: MHCC_HOW03_ADM@orsted.com

## 5 Fisheries Liaison

An Offshore Fisheries Liaison Officer (OFLO) will not be present on board the works vessels.

Onshore fisheries liaison is provided by Ady Woods (Hornsea Three Fishing Industry Representative), and Rhys Kibble, who can be contacted on:

<b>Fishing Industry Representative</b>	Ady Woods	
	Tel: +44 (0)7468 898948	
<b>Commercial Fisheries Advisor</b>	Rhys Kibble	
	Tel: +44 (0) 7775 613586	E-mail : rhys.kibble@brownmay.com

Out of hours (Monday-Friday 9am-5pm) please contact the vessel, as detailed in [Section 7](#), in the first instance.

## 6 Oil & Gas, Telecoms and Electricity Cable Operators


For those operators already in dialogue with Hornsea Three and other operators wishing to make general enquiries about the works, please contact Rob Holtom:

<b>Project Manager (Third Party Offshore Crossings and Proximity)</b>	Rob Holtom	
	Tel: +44 (0) 7734 809469	E-mail : xroom@orsted.com

Out of hours (Monday-Friday 9am-5pm) please contact the vessel, as detailed in [Section 7](#) in the first instance.

## 7 Vessel information

Contact can be made directly with the vessel, where necessary, using the contact details listed below.

Works	Cable Installation Pre-lay Operations	
Vessel details	Pedro Alvares Cabral	
Photo		
Vessel Type / Function	TSHD / Pre-lay sweeping and pre-lay trenching midshore and farshore	
Vessel email	captain@pa.jandenul.com	
Phone	V-SAT: +32 534 60 174 +88 16 771 13 299	
Call Sign	LXDY	
MMSI	253365000	
IMO	96066132	