

Appendix G – Revised Closed Areas Byelaw 2021



EASTERN INSHORE FISHERIES AND CONSERVATION AUTHORITY

MARINE AND COASTAL ACCESS ACT 2009 (c. 23)

Closed Areas Byelaw 2021

The Authority for the Eastern Inshore Fisheries and Conservation District in exercise of the powers conferred by sections 155, 156 and 158 of the Marine and Coastal Access Act 2009 makes the following byelaw for that District.

Interpretation

1. In this byelaw:

- a) “the 1983 baseline” means the baselines for the measurement of the breadth of the territorial sea as they existed at 25th January 1983 in accordance with the Territorial Waters Order in Council 1964.
- b) “angling” means fishing using a rod and line or a hook and line;
- c) “artisanal shrimp fishery catch forms” means forms provided by the Authority which may require the information in relation to:
 - (i) Vessel information;
 - (ii) Gear information;
 - (iii) Spatial information;
 - (iv) Catch data;
 - (v) date and time information;
 - (vi) fishing effort information.
- d) “Artisanal Shrimp Management Area” means the area defined as such in the schedule of this byelaw;
- e) “Artisanal Shrimp Management Policy” means the document agreed by the Authority and published on the Eastern IFCA website which describes the management of fishing activity within the Artisanal Shrimp Management Area and describes the definition of ‘risk’ in relation to paragraph 10 of this byelaw.

- f) “the Authority” means the Eastern Inshore Fisheries and Conservation Authority as defined in Articles 2 and 4 of the Eastern Inshore Fisheries and Conservation Order 2010 (SI 2010/2189);
 - g) “beam trawl” means a trawl net where the mouth or opening of the net is kept open by a beam, which is mounted at each end on guides, shoes or skids which travel along the seabed;
 - h) “bottom towed gear” means any fishing gear designed to be towed, dragged or pushed through the water whilst in contact with the seabed;
 - i) “crab tiling” means laying artificial items or structures in intertidal areas to gather crabs for the purpose of fishing;
 - j) the “Cromer Shoal Chalk Beds Marine Conservation Zone” means the area as designated in Ministerial Order 2016/4;
 - k) “the District” means the Eastern Inshore Fisheries and Conservation District as defined in Articles 2 and 3 of SI 2010/2189;
 - l) “fishing” includes:
 - (i) digging for bait;
 - (ii) shooting, setting, towing and hauling of fishing gear;
 - (iii) gathering sea fisheries resources by hand or by using a hand operated implement;
 - (iv) catching, taking or removing sea fisheries resources;
 - m) “fishing gear” includes any nets, pots, ropes, anchors, surface markers, lines, dredges, grabs, rakes or other implements used during fishing;
 - n) “Push netting” means fishing using a net that is pushed or pulled through the water by hand and from the shore without means of a vessel or other vehicle.
 - o) “handwork” means the collection of sea fisheries resources, including bait, using the hands or handheld ‘fishing gear’;
 - p) “Restricted Area” means the areas numbered 1 to 74 as set out in the schedule of this byelaw;
 - q) “Right of Common” means registered rights held by “commoners” in respect of registered “common land”;
 - r) “secured and stowed” means that fishing gear is stored in such a way that use cannot readily be made of it for any fishing activity;
2. Co-ordinates are based on WGS 84 datum, where “WGS 84” means the World Geodetic System, revised in 1984;

Prohibitions

3. A person must not fish with bottom towed gear in Restricted Areas.

4. Within Restricted Areas 39 and 53 a person must not:
 - a) fish with bottom towed gear;
 - b) fish by handwork; or
 - c) fish by crab tiling.
5. When transiting through a Restricted Area or the Artisanal Shrimp Management Area bottom towed gear on vessels must be secured and stowed.

Exemptions

6. Paragraph 3 does not apply to fishing in Restricted areas 1 to 13 under the authority of a permit issued the Wash Cackle and Mussel Byelaw 2021.
7. Paragraph 3 does not apply to fishing within Restricted Area 33 (Seasonal Restricted Area) between 1st April and 15th October in any year.
8. The prohibitions in paragraph 4 do not apply to angling.
9. Paragraph 5 does not apply in relation to Restricted Areas 1 to 30, 36 to 38, and 40 to 74 if the following apply:
 - a) a vessel had been fishing using a beam trawl up to the boundary of the Restricted Area or it will be fishing using a beam trawl immediately upon leaving the Restricted Area; and
 - b) any beam is hoisted so that it is clearly visible above the sea and that no part of the fishing gear is in contact with any part of the seabed whilst the vessel is within the Restricted Area.
10. Subject to paragraph 11, paragraph 3 does not apply to fishing within the Artisanal Shrimp Management Area if:
 - a) the fishing gear used to fish is:
 - i. a beam trawl being used to fish for shrimp; and
 - ii. being operated by hand only; and
 - b) the beam width of the fishing gear is 10ft (3.048m) or less; and
 - c) the fishing gear is operated from a vessel of no more than 7.9 metres in overall length; and
 - d) the Authority has received:
 - i. notification of fishing within the Artisanal Shrimp Management Area within 24 hours of the fishing activity; and
 - ii. an artisanal shrimp fishery catch return form, supplied by the Authority, is completed and received by the Authority within 7-days of the fishing activity.
11. Paragraph 10 does not apply;

- a) in relation to areas 59 and 60 within the Artisanal Shrimp Management Area; or
 - b) where the Authority has made notification using the Authority's website that the Artisanal Shrimp Management Area is closed to fishing with bottom towed gear because there is a risk to the conservation objectives of the Cromer Shoal Chalk Bed Marine Conservation Zone in accordance with the Artisanal Shrimp Management Policy.
12. This byelaw does not apply to any person performing an act which would otherwise constitute an offence against this byelaw, if that act was carried out in exercise of any right of common held by that person.
13. Paragraph 3 does not apply to 'push netting' in the Restricted Areas.

Revocations

13. The byelaw titled "Marine Protected Areas Byelaw 2018" which was made by the Eastern Inshore Fisheries and Conservation Authority on 18th July 2018 and in force immediately before the making of this byelaw, is revoked.

I hereby certify that the above byelaw was made by Eastern Inshore Fisheries and Conservation Authority at their meeting on 8th December 2021.



Julian Gregory

Chief Executive Officer

Eastern Inshore Fisheries and Conservation Authority

6 North Lynn Business Village, Bergen Way, Kings Lynn, Norfolk PE30 2JG

The Secretary of State for Environment, Food and Rural Affairs in exercise of the powers conferred by section 155(3) and (4) of the Marine and Coastal Access Act 2009, confirms the Closed Areas Byelaw 2021 made by the Eastern IFCA on 8th December 2021.

The said byelaw comes into force on:

SCHEDULE 1

Restricted Areas

The following tables set out the co-ordinates of the Restricted Areas referred to in sub-paragraph 1(l) of this byelaw:

Restricted Area 1			
Restricted Area 1 is defined by a boundary drawn by the series of straight lines connecting each point listed in this table to the next point in sequence and finally returning to Point A, as set out in chart 1 for illustrative purposes.			
Point	Latitude	Longitude	Area (hectares)
A	52° 57.60' N	00° 10.62' E	3.5
B	52° 57.60' N	00° 10.84' E	
C	52° 57.58' N	00° 10.86' E	
D	52° 57.50' N	00° 10.71' E	
E	52° 57.50' N	00° 10.66' E	

Restricted Area 2			
Restricted Area 2 is defined by a boundary drawn by the series of straight lines connecting each point listed in this table to the next point in sequence and finally returning to Point A, as set out in chart 1 for illustrative purposes.			
Point	Latitude	Longitude	Area (hectares)
A	52° 57.13' N	00° 09.61' E	79.8
B	52° 57.03' N	00° 09.84' E	
C	52° 56.24' N	00° 09.08' E	
D	52° 56.32' N	00° 08.81' E	
E	52° 56.99' N	00° 09.19' E	

Restricted Area 3			
Restricted Area 3 is defined by a boundary drawn by the series of straight lines connecting each point listed in this table to the next point in sequence and finally returning to Point A, as set out in chart 1 for illustrative purposes.			
Point	Latitude	Longitude	Area (hectares)
A	52° 54.95' N	00° 05.47' E	

B	52° 55.14' N	00° 06.30' E	60.7
C	52° 54.85' N	00° 06.51' E	
D	52° 54.65' N	00° 05.54' E	

Restricted Area 4			
Restricted Area 4 is defined by a boundary drawn by the series of straight lines connecting each point listed in this table to the next point in sequence and finally returning to Point A, as set out in chart 1 for illustrative purposes.			
Point	Latitude	Longitude	Area (hectares)
A	52° 54.56' N	00° 06.06' E	6.5
B	52° 54.49' N	00° 06.13' E	
C	52° 54.41' N	00° 05.81' E	
D	52° 54.48' N	00° 05.70' E	

Restricted Area 5			
Restricted Area 5 is defined by a boundary drawn by the series of straight lines connecting each point listed in this table to the next point in sequence and finally returning to Point A, as set out in chart 1 for illustrative purposes.			
Point	Latitude	Longitude	Area (hectares)
A	52° 55.20' N	00° 08.97' E	379.7
B	52° 54.74' N	00° 09.35' E	
C	52° 54.61' N	00° 09.36' E	
D	52° 53.85' N	00° 08.46' E	
E	52° 53.89' N	00° 07.98' E	
F	52° 54.58' N	00° 06.74' E	
G	52° 55.04' N	00° 07.26' E	
H	52° 54.60' N	00° 08.10' E	

Restricted Area 6

Restricted Area 6 is defined by a boundary drawn by the series of straight lines connecting each point listed in this table to the next point in sequence and finally returning to Point A, as set out in chart 1 for illustrative purposes.

Point	Latitude	Longitude	Area (hectares)
A	52° 55.27' N	00° 09.74' E	123.4
B	52° 55.64' N	00° 10.60' E	
C	52° 55.63' N	00° 10.71' E	
D	52° 55.46' N	00° 10.72' E	
E	52° 55.46' N	00° 10.96' E	
F	52° 55.64' N	00° 11.42' E	
G	52° 55.64' N	00° 11.64' E	
H	52° 55.38' N	00° 11.87' E	
I	52° 55.19' N	00° 11.58' E	
J	52° 55.29' N	00° 11.38' E	
K	52° 55.19' N	00° 10.09' E	
L	52° 55.08' N	00° 09.82' E	

Restricted Area 7

Restricted Area 7 is defined by a boundary drawn by the series of straight lines connecting each point listed in this table to the next point in sequence and finally returning to Point A, as set out in chart 1 for illustrative purposes.

Point	Latitude	Longitude	Area (hectares)
A	52° 54.09' N	00° 11.00' E	15.7
B	52° 54.12' N	00° 11.39' E	
C	52° 54.13' N	00° 11.83' E	
D	52° 54.07' N	00° 11.78' E	
E	52° 53.98' N	00° 11.40' E	
F	52° 54.00' N	00° 11.22' E	

Restricted Area 8

Restricted Area 8 is defined by a boundary drawn by the series of straight lines connecting each point listed in this table to the next point in sequence and finally returning to Point A, as set out in chart 1 for illustrative purposes.

Point	Latitude	Longitude	Area (hectares)
A	52° 52.16' N	00° 11.52' E	24.6
B	52° 52.35' N	00° 12.06' E	
C	52° 52.36' N	00° 12.30' E	
D	52° 52.31' N	00° 12.33' E	
E	52° 52.28' N	00° 12.27' E	
F	52° 52.19' N	00° 12.26' E	
G	52° 52.14' N	00° 12.14' E	
H	52° 52.12' N	00° 11.85' E	
I	52° 52.09' N	00° 11.62' E	

Restricted Area 9

Restricted Area 9 is defined by a boundary drawn by the series of straight lines connecting each point listed in this table to the next point in sequence and finally returning to Point A, as set out in chart 1 for illustrative purposes.

Point	Latitude	Longitude	Area (hectares)
A	52° 50.74' N	00° 14.83' E	64.5
B	52° 50.43' N	00° 15.12' E	
C	52° 50.08' N	00° 14.57' E	
D	52° 50.08' N	00° 14.43' E	
E	52° 50.51' N	00° 14.29' E	

Restricted Area 10

Restricted Area 10 is defined by a boundary drawn by the series of straight lines connecting each point listed in this table to the next point in sequence as and finally returning to Point A, set out in chart 1 for illustrative purposes.

Point	Latitude	Longitude	Area (hectares)
A	52° 50.39' N	00° 15.14' E	89.2
B	52° 50.35' N	00° 15.40' E	
C	52° 50.18' N	00° 15.35' E	
D	52° 50.08' N	00° 15.41' E	
E	52° 50.20' N	00° 15.59' E	
F	52° 50.20' N	00° 15.84' E	
G	52° 50.04' N	00° 15.96' E	
H	52° 49.86' N	00° 15.99' E	
I	52° 49.77' N	00° 15.88' E	
J	52° 49.72' N	00° 15.75' E	
K	52° 49.79' N	00° 15.13' E	
L	52° 50.12' N	00° 14.97' E	

Restricted Area 11

Restricted Area 11 is defined by a boundary drawn by the series of straight lines connecting each point listed in this table to the next point in sequence and finally returning to Point A, as set out in chart 1 for illustrative purposes.

Point	Latitude	Longitude	Area (hectares)
A	52° 50.32' N	00° 17.58' E	103.5
B	52° 50.32' N	00° 17.77' E	
C	52° 50.19' N	00° 18.57' E	
D	52° 49.49' N	00° 18.80' E	
E	52° 49.57' N	00° 18.33' E	

Restricted Area 12

Restricted Area 12 is defined by a boundary drawn by the series of straight lines connecting each point listed in this table to the next point in sequence and finally returning to Point A, as set out in chart 1 for illustrative purposes.

Point	Latitude	Longitude	Area (hectares)
A	52° 50.08' N	00° 20.09' E	68.6
B	52° 50.36' N	00° 20.68' E	
C	52° 50.23' N	00° 20.99' E	
D	52° 49.69' N	00° 21.09' E	

Restricted Area 13

Restricted Area 13 is defined by a boundary drawn by the series of straight lines connecting each point listed in this table to the next point in sequence and finally returning to Point A, as set out in chart 1 for illustrative purposes.

Point	Latitude	Longitude	Area (hectares)
A	52° 51.840' N	00° 21.624' E	8.3
B	52° 51.740' N	00° 21.866' E	
C	52° 51.625' N	00° 21.662' E	
D	52° 51.688' N	00° 21.502' E	

Restricted Area 14

Restricted Area 14 is defined by a boundary drawn by the series of straight lines connecting each point listed in this table to the next point in sequence and finally returning to Point A, as set out in chart 2 for illustrative purposes.

Point	Latitude	Longitude	Area (hectares)
A	53° 06.35' N	00° 23.92' E	136.7
B	53° 06.09' N	00° 24.70' E	
C	53° 05.35' N	00° 24.37' E	
D	53° 05.61' N	00° 23.60' E	

Restricted Area 15

Restricted Area 15 is defined by a boundary drawn by the series of straight lines connecting each point listed in this table to the next point in sequence and finally returning to Point A, as set out in chart 2 for illustrative purposes.

Point	Latitude	Longitude	Area (hectares)
A	53° 05.53' N	00° 24.58' E	8.0
B	53° 05.52' N	00° 24.82' E	
C	53° 05.37' N	00° 24.80' E	
D	53° 05.40' N	00° 24.50' E	

Restricted Area 16

Restricted Area 16 is defined by a boundary drawn by the series of straight lines connecting each point listed in this table to the next point in sequence and finally returning to Point A, as set out in chart 2 for illustrative purposes.

Point	Latitude	Longitude	Area (hectares)
A.	53° 05.24' N	00° 25.07' E	1.5
B.	53° 05.23' N	00° 25.13' E	
C.	53° 05.18' N	00° 25.13' E	
D.	53° 05.13' N	00° 25.07' E	
E.	53° 05.14' N	00° 25.03' E	

Restricted Area 17

Restricted Area 17 is defined by a boundary drawn by the series of straight lines connecting each point listed in this table to the next point in sequence and finally returning to Point A, as set out in chart 2 for illustrative purposes.

Point	Latitude	Longitude	Area (hectares)
A.	53° 05.18' N	00° 24.47' E	26.8
B.	53° 05.10' N	00° 24.98' E	
C.	53° 04.89' N	00° 24.89' E	
D.	53° 04.85' N	00° 24.45' E	

Restricted Area 18

Restricted Area 18 is defined by a boundary drawn by the series of straight lines connecting each point listed in this table to the next point in sequence and finally returning to Point A, as set out in chart 2 for illustrative purposes.

Point	Latitude	Longitude	Area (hectares)
A.	53° 05.34' N	00° 24.20' E	43.2
B.	53° 05.19' N	00° 24.40' E	
C.	53° 04.81' N	00° 23.68' E	
D.	53° 05.02' N	00° 23.44' E	

Restricted Area 19

Restricted Area 19 is defined by a boundary drawn by the series of straight lines connecting each point listed in this table to the next point in sequence and finally returning to Point A, as set out in chart 2 for illustrative purposes.

Point	Latitude	Longitude	Area (hectares)
A.	53° 05.06' N	00° 25.57' E	287.7
B.	53° 04.96' N	00° 26.19' E	
C.	53° 03.28' N	00° 25.55' E	
D.	53° 03.37' N	00° 24.86' E	
E.	53° 04.80' N	00° 25.19' E	

Restricted Area 20

Restricted Area 20 is defined by a boundary drawn by the series of straight lines connecting each point listed in this table to the next point in sequence and finally returning to Point A, as set out in chart 2 for illustrative purposes.

Point	Latitude	Longitude	Area (hectares)
A.	53° 02.66' N	00° 29.46' E	2.7
B.	53° 02.66' N	00° 29.63' E	
C.	53° 02.59' N	00° 29.63' E	
D.	53° 02.59' N	00° 29.46' E	

Restricted Area 21

Restricted Area 21 is defined by a boundary drawn by the series of straight lines connecting each point listed in this table to the next point in sequence and finally returning to Point A, as set out in chart 2 for illustrative purposes.

Point	Latitude	Longitude	Area (hectares)
A.	53° 03.86' N	00° 30.22' E	59.3
B.	53° 03.86' N	00° 30.48' E	
C.	53° 03.67' N	00° 30.48' E	
D.	53° 03.22' N	00° 30.15' E	
E.	53° 03.22' N	00° 29.78' E	
F.	53° 03.48' N	00° 29.78' E	

Restricted Area 22

Restricted Area 22 is defined by a boundary drawn by the series of straight lines connecting each point listed in this table to the next point in sequence and finally returning to Point A, as set out in chart 2 for illustrative purposes.

Point	Latitude	Longitude	Area (hectares)
A.	53° 02.18' N	00° 22.57' E	52.3
B.	53° 02.19' N	00° 23.16' E	
C.	53° 02.09' N	00° 23.30' E	
D.	53° 01.87' N	00° 23.15' E	
E.	53° 01.76' N	00° 22.80' E	
F.	53° 01.85' N	00° 22.60' E	
G.	53° 02.00' N	00° 22.49' E	

Restricted Area 23

This area has been removed and is no longer a Restricted Area

Point	Latitude	Longitude	Area (hectares)
A.	n/a	n/a	
B.	n/a	n/a	
C.	n/a	n/a	
D.	n/a	n/a	

Restricted Area 24

Restricted Area 24 is defined by a boundary drawn by the series of straight lines connecting each point listed in this table to the next point in sequence and finally returning to Point A, as set out in chart 2 for illustrative purposes.

Point	Latitude	Longitude	Area (hectares)
A.	52° 57.17' N	00° 15.98' E	2.4
B.	52° 57.17' N	00° 16.08' E	
C.	52° 57.06' N	00° 16.06' E	
D.	52° 57.06' N	00° 15.94' E	

Restricted Area 25

Restricted Area 25 is defined by a boundary drawn by the series of straight lines connecting each point listed in this table to the next point in sequence and finally returning to Point A, as set out in chart 2 for illustrative purposes.

Point	Latitude	Longitude	Area (hectares)
A.	52° 57.49' N	00° 17.20' E	1.6
B.	52° 57.51' N	00° 17.31' E	
C.	52° 57.44' N	00° 17.34' E	
D.	52° 57.43' N	00° 17.23' E	

Restricted Area 26

Restricted Area 26 is defined by a boundary drawn by the series of straight lines connecting each point listed in this table to the next point in sequence and finally returning to Point A, as set out in chart 2 for illustrative purposes.

Point	Latitude	Longitude	Area (hectares)
A.	52° 57.85' N	00° 19.73' E	2.1
B.	52° 57.85' N	00° 19.96' E	
C.	52° 57.81' N	00° 19.96' E	
D.	52° 57.80' N	00° 19.74' E	

Restricted Area 27

Restricted Area 27 is defined by a boundary drawn by the series of straight lines connecting each point listed in this table to the next point in sequence and finally returning to Point A, as set out in chart 2 for illustrative purposes.

Point	Latitude	Longitude	Area (hectares)
A.	52° 57.18' N	00° 22.07' E	47.3
B.	52° 57.14' N	00° 22.40' E	
C.	52° 57.02' N	00° 22.44' E	
D.	52° 56.81' N	00° 22.35' E	
E.	52° 56.68' N	00° 22.13' E	
F.	52° 56.69' N	00° 21.90' E	
G.	52° 56.75' N	00° 21.88' E	
H.	52° 57.03' N	00° 21.83' E	

Restricted Area 28

Restricted Area 28 is defined by a boundary drawn by the series of straight lines connecting each point listed in this table to the next point in sequence and finally returning to Point A, as set out in chart 2 for illustrative purposes.

Point	Latitude	Longitude	Area (hectares)
A.	52° 57.87' N	00° 08.71' E	3.8
B.	52° 57.85' N	00° 08.81' E	
C.	52° 57.82' N	00° 08.83' E	
D.	52° 57.71' N	00° 08.65' E	
E.	52° 57.73' N	00° 08.58' E	

Restricted Area 29

Restricted Area 29 is defined by a boundary drawn by the series of straight lines connecting each point listed in this table to the next point in sequence and finally returning to Point A, as set out in chart 2 for illustrative purposes.

Point	Latitude	Longitude	Area (hectares)
A.	53° 04.10' N	00° 27.65' E	3446.0
B.	53° 03.65' N	00° 29.98' E	
C.	53° 01.43' N	00° 27.35' E	
D.	52° 59.83' N	00° 24.77' E	
E.	52° 58.75' N	00° 24.60' E	
F.	52° 58.32' N	00° 24.20' E	
G.	52° 57.57' N	00° 22.13' E	
H.	52° 58.23' N	00° 21.45' E	
I.	52° 58.60' N	00° 21.47' E	
J.	53° 00.22' N	00° 22.83' E	

Restricted Area 30

Restricted Area 30 is defined by a straight line between points A and B in this table and the land boundary is to be taken as the mean high water springs mark, as set out in chart 3 for illustrative purposes.

Point	Latitude	Longitude	Area (hectares)
A.	52° 59.00' N	00° 40.03' E	51.7
B.	52° 58.63' N	00° 40.85' E	

Restricted Area 31

Restricted Area 31 is defined by a boundary drawn by a line connecting points A and B which follows the three nautical mile boundary (three nautical miles from the 1983 baseline) and a series of straight lines drawn in sequence between points B to I and finally returning to Point A as listed in this table, as set out in chart 3 for illustrative purposes.

Point	Latitude	Longitude	Area (hectares)
A.	53° 02.58' N	00° 50.67' E	5922.0
B.	53° 01.65' N	01° 01.57' E	
C.	52° 58.88' N	01° 01.60' E	
D.	52° 59.16' N	01° 00.06' E	
E.	52° 59.71' N	00° 55.55' E	
F.	52° 59.86' N	00° 54.90' E	
G.	52° 59.73' N	00° 53.81' E	
H.	52° 59.79' N	00° 52.44' E	
I.	52° 59.96' N	00° 50.70' E	

Restricted Area 32

Restricted Area 32 is defined by a boundary drawn by a line connecting points A and B which follows the land boundary which is to be taken as mean high water springs and a series of straight lines drawn in sequence between points B to O and finally returning to Point A, as set out in chart 3 for illustrative purposes.

Point	Latitude	Longitude	Area (hectares)
A.	52° 57.47' N	00° 51.06' E	2189.0
B.	52° 58.26' N	01° 01.60' E	
C.	52° 58.36' N	01° 01.60' E	
D.	52° 59.11' N	00° 58.39' E	
E.	52° 59.15' N	00° 57.26' E	
F.	52° 58.80' N	00° 56.52' E	
G.	52° 58.77' N	00° 55.57' E	
H.	52° 58.88' N	00° 54.81' E	
I.	52° 59.10' N	00° 54.22' E	
J.	52° 59.28' N	00° 52.96' E	
K.	52° 59.33' N	00° 51.90' E	
L.	52° 59.54' N	00° 50.90' E	
M.	52° 59.54' N	00° 50.71' E	
N.	52° 58.62' N	00° 50.76' E	
O.	52° 58.40' N	00° 51.03' E	

Restricted Area 33 (Seasonal Restricted Area)

Restricted Area 33 is defined by a boundary drawn by the series of straight lines connecting each point listed in this table to the next point in sequence and finally returning to Point A, as set out in chart 3 for illustrative purposes.

Point	Latitude	Longitude	Area (hectares)
A.	52° 59.96' N	00° 50.70' E	1217.0
B.	52° 59.79' N	00° 52.44' E	
C.	52° 59.73' N	00° 53.81' E	
D.	52° 59.86' N	00° 54.90' E	
E.	52° 59.71' N	00° 55.55' E	
F.	52° 59.16' N	01° 00.06' E	
G.	52° 58.88' N	01° 01.60' E	
H.	52° 58.36' N	01° 01.60' E	
I.	52° 59.11' N	00° 58.39' E	
J.	52° 59.15' N	00° 57.26' E	
K.	52° 58.80' N	00° 56.52' E	
L.	52° 58.77' N	00° 55.57' E	
M.	52° 58.88' N	00° 54.81' E	
N.	52° 59.10' N	00° 54.22' E	
O.	52° 59.28' N	00° 52.96' E	
P.	52° 59.33' N	00° 51.90' E	
Q.	52° 59.54' N	00° 50.90' E	
R.	52° 59.54' N	00° 50.71' E	
S.	52° 59.96' N	00° 50.70' E	

Restricted Area 34

Restricted Area 34 is defined by a boundary drawn connecting points A and B with a straight line followed by connecting points B to C with a line which follows the three nautical mile boundary (three nautical miles from the 1983 baseline), followed by a straight line drawn between points C and D and finally by a line returning to Point A following the mean high-water springs mark, as set out in chart 3 for illustrative purposes.

Point	Latitude	Longitude	Area (hectares)
A.	52° 58.25' N	01° 01.61' E	3826.0
B.	53° 01.65' N	01° 01.60' E	
C.	53° 00.31' N	01° 07.35' E	
D.	52° 57.14' N	01° 07.13' E	

Restricted Area 35

Restricted Area 35 is defined by a boundary drawn by the series of straight lines connecting each point listed in this table to the next point in sequence and finally returning to Point A following the mean high-water springs mark, as set out in chart 4 for illustrative purposes.

Point	Latitude	Longitude	Area (hectares)
A.	52° 57.15' N	01° 07.10' E	29930.0
B.	53° 02.74' N	01° 07.52' E	
C.	53° 01.41' N	01° 18.73' E	
D.	53° 01.30' N	01° 19.23' E	
E.	53° 01.20' N	01° 19.65' E	
F.	53° 01.12' N	01° 19.89' E	
G.	53° 01.05' N	01° 20.11' E	
H.	53° 00.96' N	01° 20.32' E	
I.	53° 00.86' N	01° 20.54' E	
J.	52° 58.74' N	01° 26.36' E	
K.	52° 58.36' N	01° 27.24' E	
L.	52° 57.71' N	01° 28.60' E	
M.	52° 57.25' N	01° 29.41' E	
N.	52° 56.98' N	01° 29.80' E	
O.	52° 56.71' N	01° 30.13' E	
P.	52° 56.27' N	01° 30.57' E	
Q.	52° 55.83' N	01° 30.93' E	
R.	52° 55.42' N	01° 31.20' E	
S.	52° 55.00' N	01° 31.42' E	
T.	52° 54.65' N	01° 31.58' E	
U.	52° 54.37' N	01° 31.68' E	
V.	52° 54.00' N	01° 31.79' E	
W.	52° 53.44' N	01° 31.90' E	
X.	52° 51.86' N	01° 33.80' E	
Y.	52° 49.40' N	01° 32.46' E	

Restricted Area 36

Restricted Area 36 is defined by a boundary drawn by the series of straight lines connecting each point listed in this table to the next point in sequence and finally returning to Point A, as set out in chart 5 for illustrative purposes.

Point	Latitude	Longitude	Area (hectares)
A.	52° 48.56' E	001° 47.19' N	107.3
B.	52° 48.31' E	001° 47.59' N	
C.	52° 47.67' E	001° 47.82' N	
D.	52° 47.65' E	001° 47.55' N	
E.	52° 48.03' E	001° 46.99' N	
F.	52° 48.55' E	001° 46.80' N	

Restricted Area 37

Restricted Area 37 is defined by a boundary drawn by the series of straight lines connecting each point listed in this table to the next point in sequence and finally returning to Point A, as set out in chart 6 for illustrative purposes.

Point	Latitude	Longitude	Area (hectares)
A.	52° 43.44' E	001° 50.41' N	1923.6
B.	52° 40.19' E	001° 51.36' N	
C.	52° 39.75' E	001° 50.51' N	
D.	52° 39.19' E	001° 50.31' N	
E.	52° 39.15' E	001° 49.62' N	
F.	52° 39.83' E	001° 49.33' N	
G.	52° 40.15' E	001° 48.72' N	
H.	52° 42.47' E	001° 47.77' N	
I.	52° 43.36' E	001° 50.03' N	

Restricted Area 38

Restricted Area 38 is defined by a boundary drawn by the series of straight lines connecting each point listed in this table to the next point in sequence and finally returning to Point A, as set out in chart 5 for illustrative purposes.

Point	Latitude	Longitude	Area (hectares)
A.	52° 37.16' N	01° 54.34' E	2237.0
B.	52° 39.92' N	01° 53.25' E	
C.	52° 40.54' N	01° 53.28' E	
D.	52° 41.43' N	01° 53.75' E	
E.	52° 41.62' N	01° 54.49' E	
F.	52° 41.37' N	01° 55.29' E	
G.	52° 39.86' N	01° 56.70' E	
H.	52° 39.22' N	01° 56.76' E	
I.	52° 38.52' N	01° 56.55' E	
J.	52° 37.83' N	01° 56.26' E	

Area 39

Restricted Area 39 is defined by a boundary drawn by the series of straight lines connecting each point listed in this table to the next point in sequence, as set out in Chart 7 for illustrative purposes.

Point	Latitude	Longitude	Area (hectares)
A.	53° 29.88' N	00° 05.46' E	9.2
B.	53° 29.88' N	00° 05.81' E	
C.	53° 29.75' N	00° 05.81' E	
D.	53° 29.75' N	00° 05.46' E	

Restricted Area 40

Restricted Area 40 is defined by a boundary drawn by the series of straight lines connecting each point listed in this table to the next point in sequence and finally returning to Point A, as set out in chart 8 for illustrative purposes.

Point	Latitude	Longitude	Area (hectares)
A.	53° 05.93' N	00° 25.67' E	71.8
B.	53° 05.93' N	00° 25.87' E	
C.	53° 05.82' N	00° 26.10' E	
D.	53° 05.65' N	00° 26.19' E	
E.	53° 05.47' N	00° 26.09' E	
F.	53° 05.38' N	00° 25.64' E	
G.	53° 05.41' N	00° 25.41' E	
H.	53° 05.45' N	00° 25.30' E	
I.	53° 05.66' N	00° 25.45' E	
J.	53° 05.68' N	00° 25.29' E	
K.	53° 05.76' N	00° 25.32' E	
L.	53° 05.76' N	00° 25.48' E	

Restricted Area 41

Restricted Area 41 is defined by a boundary drawn by the series of straight lines connecting each point listed in this table to the next point in sequence and finally returning to Point A, as set out in chart 8 for illustrative purposes.

Point	Latitude	Longitude	Area (hectares)
A.	53° 04.56' N	00° 27.13' E	11.8
B.	53° 04.54' N	00° 27.19' E	
C.	53° 04.52' N	00° 27.24' E	
D.	53° 04.40' N	00° 27.44' E	
E.	53° 04.35' N	00° 27.41' E	
F.	53° 04.34' N	00° 27.31' E	
G.	53° 04.37' N	00° 27.05' E	
H.	53° 04.41' N	00° 27.01' E	

Restricted Area 42

Restricted Area 42 is defined by a boundary drawn by the series of straight lines connecting each point listed in this table to the next point in sequence and finally returning to Point A, as set out in chart 8 for illustrative purposes.

Point	Latitude	Longitude	Area (hectares)
A.	53° 05.12' N	00° 27.13' E	1.7
B.	53° 05.12' N	00° 27.24' E	
C.	53° 05.04' N	00° 27.24' E	
D.	53° 05.04' N	00° 27.13' E	

Restricted Area 43

Restricted Area 43 is defined by a boundary drawn by the series of straight lines connecting each point listed in this table to the next point in sequence and finally returning to Point A, as set out in chart 8 for illustrative purposes.

Point	Latitude	Longitude	Area (hectares)
A.	53° 05.67' N	00° 26.92' E	5.4
B.	53° 05.68' N	00° 26.96' E	
C.	53° 05.60' N	00° 27.08' E	
D.	53° 05.54' N	00° 27.05' E	
E.	53° 05.49' N	00° 26.98' E	
F.	53° 05.56' N	00° 26.85' E	

Restricted Area 44

Restricted Area 44 is defined by a boundary drawn by the series of straight lines connecting each point listed in this table to the next point in sequence and finally returning to Point A, as set out in chart 8 for illustrative purposes.

Point	Latitude	Longitude	Area (hectares)
A.	53° 05.98' N	00° 26.62' E	5.7
B.	53° 05.97' N	00° 26.70' E	
C.	53° 05.86' N	00° 26.81' E	
D.	53° 05.82' N	00° 26.74' E	
E.	53° 05.83' N	00° 26.65' E	
F.	53° 05.86' N	00° 26.56' E	
G.	53° 05.92' N	00° 26.53' E	

Restricted Area 45

Restricted Area 45 is defined by a boundary drawn by the series of straight lines connecting each point listed in this table to the next point in sequence and finally returning to Point A, as set out in chart 8 for illustrative purposes.

Point	Latitude	Longitude	Area (hectares)
A.	53° 06.12' N	00° 27.26' E	15.5
B.	53° 06.10' N	00° 27.42' E	
C.	53° 06.04' N	00° 27.41' E	
D.	53° 05.84' N	00° 27.12' E	
E.	53° 05.81' N	00° 27.00' E	
F.	53° 05.88' N	00° 26.87' E	

Restricted Area 46

Restricted Area 46 is defined by a boundary drawn by the series of straight lines connecting each point listed in this table to the next point in sequence and finally returning to Point A, as set out in chart 8 for illustrative purposes.

Point	Latitude	Longitude	Area (hectares)
A.	53° 06.15' N	00° 27.82' E	18.9
B.	53° 06.15' N	00° 27.95' E	
C.	53° 06.02' N	00° 28.21' E	
D.	53° 05.95' N	00° 28.28' E	
E.	53° 05.90' N	00° 28.26' E	
F.	53° 05.86' N	00° 28.12' E	
G.	53° 05.91' N	00° 27.83' E	

Restricted Area 47

Restricted Area 47 is defined by a boundary drawn by the series of straight lines connecting each point listed in this table to the next point in sequence and finally returning to Point A, as set out in chart 8 for illustrative purposes.

Point	Latitude	Longitude	Area (hectares)
A.	53° 06.10' N	00° 29.29' E	17.2
B.	53° 06.09' N	00° 29.50' E	
C.	53° 05.89' N	00° 29.44' E	
D.	53° 05.81' N	00° 29.35' E	
E.	53° 05.81' N	00° 29.12' E	
F.	53° 05.97' N	00° 29.12' E	

Restricted Area 48

Restricted Area 48 is defined by a boundary drawn by the series of straight lines connecting each point listed in this table to the next point in sequence and finally returning to Point A, as set out in chart 8 for illustrative purposes.

Point	Latitude	Longitude	Area (hectares)
A.	53° 07.16' N	00° 29.67' E	6.2
B.	53° 07.19' N	00° 29.95' E	
C.	53° 07.13' N	00° 29.99' E	
D.	53° 07.05' N	00° 29.80' E	
E.	53° 07.05' N	00° 29.66' E	

Restricted Area 49

Restricted Area 49 is defined by a boundary drawn by the series of straight lines connecting each point listed in this table to the next point in sequence and finally returning to Point A, as set out in chart 8 for illustrative purposes.

Point	Latitude	Longitude	Area (hectares)
A.	53° 06.56' N	00° 26.31' E	3.2
B.	53° 06.57' N	00° 26.40' E	
C.	53° 06.54' N	00° 26.41' E	
D.	53° 06.51' N	00° 26.40' E	
E.	53° 06.45' N	00° 26.26' E	
F.	53° 06.46' N	00° 26.21' E	
G.	53° 06.49' N	00° 26.19' E	
H.	53° 06.53' N	00° 26.22' E	

Restricted Area 50

Restricted Area 50 is defined by a boundary drawn by the series of straight lines connecting each point listed in this table to the next point in sequence and finally returning to Point A, as set out in chart 8 for illustrative purposes.

Point	Latitude	Longitude	Area (hectares)
A.	53° 06.62' N	00° 24.94' E	2.4
B.	53° 06.61' N	00° 25.05' E	
C.	53° 06.54' N	00° 25.04' E	
D.	53° 06.53' N	00° 25.01' E	
E.	53° 06.52' N	00° 24.97' E	
F.	53° 06.57' N	00° 24.89' E	
G.	53° 06.59' N	00° 24.90' E	

Restricted Area 51

Restricted Area 51 is defined by a boundary drawn by the series of straight lines connecting each point listed in this table to the next point in sequence and finally returning to Point A, as set out in chart 8 for illustrative purposes.

Point	Latitude	Longitude	Area (hectares)
A.	53° 08.98' N	00° 24.79' E	107.1
B.	53° 08.92' N	00° 25.13' E	
C.	53° 08.77' N	00° 25.33' E	
D.	53° 08.63' N	00° 25.40' E	
E.	53° 08.40' N	00° 25.29' E	
F.	53° 08.30' N	00° 25.11' E	
G.	53° 08.26' N	00° 24.87' E	
H.	53° 08.30' N	00° 24.64' E	
I.	53° 08.40' N	00° 24.46' E	
J.	53° 08.55' N	00° 24.39' E	
K.	53° 08.77' N	00° 24.50' E	

Restricted Area 52

Restricted Area 52 is defined by a boundary drawn by the series of straight lines connecting each point listed in this table to the next point in sequence and finally returning to Point A, as set out in chart 2 for illustrative purposes.

Point	Latitude	Longitude	Area (hectares)
A.	53° 00.42' N	00° 22.35' E	86.2
B.	53° 00.23' N	00° 22.74' E	
C.	52° 59.66' N	00° 21.90' E	
D.	52° 59.87' N	00° 21.44' E	

Restricted Area 53

Restricted Area 53 is defined by a boundary drawn by the series of straight lines connecting each point listed in this table to the next point in sequence and finally returning to Point A, as set out in chart 1 for illustrative purposes.

Point	Latitude	Longitude	Area (hectares)
A.	52° 51.33' N	00° 15.45' E	5.8
B.	52° 51.33' N	00° 15.60' E	
C.	52° 51.17' N	00° 15.75' E	
D.	52° 51.17' N	00° 15.57' E	

Restricted Area 54

Restricted Area 54 is defined by a boundary drawn by the series of straight lines connecting each point listed in this table to the next point in sequence and finally returning to Point A, as set out in chart 8 for illustrative purposes.

Point	Latitude	Longitude	Area (hectares)
A.	53° 09.28' N	00° 27.61' E	21.9
B.	53° 09.33' N	00° 27.89' E	
C.	53° 09.07' N	00° 27.77' E	
D.	53° 09.08' N	00° 27.19' E	
E.	53° 09.13' N	00° 27.21' E	

Restricted Area 55

Restricted Area 55 is defined by a boundary drawn by the series of straight lines connecting each point listed in this table to the next point in sequence and finally returning to Point A, as set out in chart 8 for illustrative purposes.

Point	Latitude	Longitude	Area (hectares)
A.	53° 10.00' N	00° 26.20' E	36.5
B.	53° 10.00' N	00° 26.79' E	
C.	53° 09.94' N	00° 26.82' E	
D.	53° 09.64' N	00° 26.58' E	
E.	53° 09.64' N	00° 26.29' E	
F.	53° 09.76' N	00° 26.23' E	

Restricted Area 56

Restricted Area 56 is defined by a boundary drawn by the series of straight lines connecting each point listed in this table to the next point in sequence and finally returning to Point A, as set out in chart 8 for illustrative purposes.

Point	Latitude	Longitude	Area (hectares)
A.	53°09.180'N	0°24.850'E	235.6
B.	53°09.120'N	0°24.960'E	
C.	53°09.080'N	0°25.190'E	
D.	53°09.120'N	0°25.420'E	
E.	53°09.220'N	0°25.600'E	
F.	53°09.370'N	0°25.660'E	
G.	53°09.510'N	0°25.600'E	
H.	53°09.610'N	0°25.430'E	
I.	53°09.679'N	0°25.230'E	
J.	53°09.990'N	0°24.309'E	
K.	53°09.967'N	0°24.096'E	
L.	53°09.846'N	0°24.030'E	
M.	53°09.624'N	0°24.320'E	
N.	53°09.244'N	0°24.039'E	
O.	53°09.000'N	0°23.656'E	
P.	53°08.735'N	0°23.713'E	
Q.	53°08.728'N	0°23.975'E	
R.	53°09.120'N	0°24.449'E	
S.	53°09.378'N	0°24.621'E	

Restricted Area 57

Restricted Area 57 is defined by a boundary drawn by the series of straight lines connecting each point listed in this table to the next point in sequence and finally returning to Point A, as set out in chart 8 for illustrative purposes.

Point	Latitude	Longitude	Area (hectares)
A.	53° 06.09' N	00° 25.08' E	27.0
B.	53° 06.09' N	00° 25.24' E	
C.	53° 06.02' N	00° 25.28' E	
D.	53° 05.84' N	00° 25.35' E	
E.	53° 05.75' N	00° 25.01' E	
F.	53° 05.76' N	00° 24.81' E	
G.	53° 05.89' N	00° 24.79' E	

Restricted Area 58

Restricted Area 58 is defined by a boundary drawn by the series of straight lines connecting each point listed in this table to the next point in sequence and finally returning to Point A, as set out in chart 8 for illustrative purposes.

Point	Latitude	Longitude	Area (hectares)
A.	53° 05.69' N	00° 25.11' E	9.2
B.	53° 05.53' N	00° 25.27' E	
C.	53° 05.45' N	00° 25.20' E	
D.	53° 05.57' N	00° 24.89' E	

Restricted Area 59

Restricted Area 59 is defined by a boundary drawn by the series of straight lines connecting each point listed in this table to the next point in sequence and finally returning to Point A, as set out in chart 4 for illustrative purposes.

Point	Latitude	Longitude	Area (hectares)
A.	52° 51.90' N	01° 28.38' E	12.0
B.	52° 51.91' N	01° 28.49' E	
C.	52° 52.18' N	01° 28.31' E	
D.	52° 52.16' N	01° 28.23' E	
E.	52° 52.01' N	01° 28.11' E	

Restricted Area 60

Restricted Area 60 is defined by a boundary drawn by the series of straight lines connecting each point listed in this table to the next point in sequence and finally returning to Point A, as set out in chart 4 for illustrative purposes.

Point	Latitude	Longitude	Area (hectares)
A.	52° 51.18' N	01° 30.69' E	114.0
B.	52° 50.72' N	01° 31.59' E	
C.	52° 50.47' N	01° 31.49' E	
D.	52° 50.22' N	01° 31.37' E	
E.	52° 50.35' N	01° 31.07' E	
F.	52° 50.62' N	01° 30.65' E	

Restricted Area 61

Restricted Area 61 is defined by a boundary drawn by the series of straight lines connecting each point listed in this table to the next point in sequence and finally returning to Point A, as set out in chart 5 for illustrative purposes.

Point	Latitude	Longitude	Area (hectares)
A.	52° 51.68' E	001° 43.40' N	65.1
B.	52° 51.45' E	001° 43.85' N	
C.	52° 51.23' E	001° 43.49' N	
D.	52° 51.23' E	001° 43.22' N	
E.	52° 51.49' E	001° 42.84' N	
F.	52° 51.66' E	001° 42.80' N	

Restricted Area 62

Restricted Area 62 is defined by a boundary drawn by the series of straight lines connecting each point listed in this table to the next point in sequence and finally returning to Point A, as set out in chart 5 for illustrative purposes.

Point	Latitude	Longitude	Area (hectares)
A.	52° 49.25' E	001° 45.81' N	13
B.	52° 49.09' E	001° 46.01' N	
C.	52° 49.02' E	001° 45.72' N	
D.	52° 49.18' E	001° 45.49' N	

Restricted Area 63

Restricted Area 63 is defined by a boundary drawn by the series of straight lines connecting each point listed in this table to the next point in sequence and finally returning to Point A, as set out in chart 5 for illustrative purposes.

Point	Latitude	Longitude	Area (hectares)
A.	52° 47.53' E	001° 46.37' N	104.8
B.	52° 46.81' E	001° 46.55' N	
C.	52° 46.63' E	001° 46.12' N	
D.	52° 47.42' E	001° 45.60' N	

Restricted Area 64

Restricted Area 64 is defined by a boundary drawn by the series of straight lines connecting each point listed in this table to the next point in sequence and finally returning to Point A, as set out in chart 5 for illustrative purposes.

Point	Latitude	Longitude	Area (hectares)
A.	52° 45.18' E	001° 47.12' N	48.1
B.	52° 44.98' E	001° 47.44' N	
C.	52° 44.73' E	001° 47.23' N	
D.	52° 44.71' E	001° 46.85' N	
E.	52° 45.17' E	001° 46.75' N	

Restricted Area 65

Restricted Area 65 is defined by a boundary drawn by the series of straight lines connecting each point listed in this table to the next point in sequence and finally returning to Point A, as set out in chart 6 for illustrative purposes.

Point	Latitude	Longitude	Area (hectares)
A.	52° 44.55' E	001° 49.30' N	79.4
B.	52° 43.73' E	001° 49.71' N	
C.	52° 43.53' E	001° 49.46' N	
D.	52° 44.37' E	001° 48.87' N	

Restricted Area 66

Restricted Area 66 is defined by a boundary drawn by the series of straight lines connecting each point listed in this table to the next point in sequence and finally returning to Point A, as set out in chart 6 for illustrative purposes.

Point	Latitude	Longitude	Area (hectares)
A.	52° 43.49' E	001° 48.62' N	17.8
B.	52° 43.47' E	001° 49.04' N	
C.	52° 43.27' E	001° 49.03' N	
D.	52° 43.29' E	001° 48.61' N	

Restricted Area 67

Restricted Area 67 is defined by a boundary drawn by the series of straight lines connecting each point listed in this table to the next point in sequence and finally returning to Point A, as set out in chart 6 for illustrative purposes.

Point	Latitude	Longitude	Area (hectares)
A.	52° 43.65' E	001° 52.82' N	91.8
B.	52° 43.23' E	001° 53.38' N	
C.	52° 42.96' E	001° 53.04' N	
D.	52° 43.57' E	001° 52.00' N	

Restricted Area 68

Restricted Area 68 is defined by a boundary drawn by the series of straight lines connecting each point listed in this table to the next point in sequence and finally returning to Point A, as set out in chart 6 for illustrative purposes.

Point	Latitude	Longitude	Area (hectares)
A.	52° 43.17' E	001° 53.45' N	36.8
B.	52° 42.71' E	001° 54.34' N	
C.	52° 42.70' E	001° 53.83' N	
D.	52° 42.86' E	001° 53.42' N	
E.	52° 43.16' E	001° 53.41' N	

Restricted Area 69

Restricted Area 69 is defined by a boundary drawn by the series of straight lines connecting each point listed in this table to the next point in sequence and finally returning to Point A, as set out in chart 6 for illustrative purposes.

Point	Latitude	Longitude	Area (hectares)
A.	52° 41.16' E	001° 56.57' N	28.2
B.	52° 40.98' E	001° 56.75' N	
C.	52° 40.89' E	001° 56.61' N	
D.	52° 40.89' E	001° 56.17' N	
E.	52° 41.15' E	001° 56.15' N	

Restricted Area 70

Restricted Area 70 is defined by a boundary drawn by the series of straight lines connecting each point listed in this table to the next point in sequence and finally returning to Point A, as set out in chart 6 for illustrative purposes.

Point	Latitude	Longitude	Area (hectares)
A.	52° 39.54' E	001° 50.64' N	18.7
B.	52° 39.53' E	001° 51.00' N	
C.	52° 39.28' E	001° 51.01' N	
D.	52° 39.28' E	001° 50.71' N	
E.	52° 39.42' E	001° 50.63' N	

Restricted Area 71

Restricted Area 71 is defined by a boundary drawn by the series of straight lines connecting each point listed in this table to the next point in sequence and finally returning to Point A, as set out in chart 6 for illustrative purposes.

Point	Latitude	Longitude	Area (hectares)
A.	52° 40.15' E	001° 57.38' N	218.6
B.	52° 38.37' E	001° 57.99' N	
C.	52° 38.35' E	001° 57.75' N	
D.	52° 38.74' E	001° 57.16' N	
E.	52° 39.08' E	001° 57.01' N	
F.	52° 39.29' E	001° 57.00' N	
G.	52° 40.11' E	001° 57.26' N	

Restricted Area 72

Restricted Area 72 is defined by a boundary drawn by the series of straight lines connecting each point listed in this table to the next point in sequence and finally returning to Point A, as set out in chart 6 for illustrative purposes.

Point	Latitude	Longitude	Area (hectares)
A.	52° 37.42' E	001° 53.73' N	45.3
B.	52° 37.44' E	001° 54.09' N	
C.	52° 36.86' E	001° 54.13' N	
D.	52° 36.85' E	001° 53.74' N	

Restricted Area 73

Restricted Area 73 is defined by a boundary drawn by the series of straight lines connecting each point listed in this table to the next point in sequence and finally returning to Point A, as set out in chart 8 for illustrative purposes.

Point	Latitude	Longitude	Area (hectares)
A.	53°08.296'N	0°23.498'E	102.2
B.	53°08.287'N	0°24.003'E	
C.	53°08.054'N	0°24.173'E	
D.	53°07.815'N	0°24.130'E	
E.	53°07.659'N	0°23.860'E	
F.	53°07.676'N	0°23.484'E	
G.	53°07.810'N	0°23.231'E	
H.	53°08.121'N	0°23.239'E	

Restricted Area 74

Restricted Area 74 is defined by a boundary drawn by the series of straight lines connecting each point listed in this table to the next point in sequence and finally returning to Point A, as set out in chart 8 for illustrative purposes.

Point	Latitude	Longitude	Area (hectares)
A.	53°10.071'N	0°23.964'E	10.6
B.	53°10.071'N	0°24.083'E	
C.	53°10.121'N	0°24.180'E	
D.	53°10.146'N	0°23.889'E	
E.	53°10.202'N	0°24.181'E	
F.	53°10.229'N	0°23.865'E	
G.	53°10.254'N	0°24.149'E	
H.	53°10.279'N	0°23.957'E	

Artisanal Shrimp Management Area

The Artisanal Shrimp Management Area is defined by a boundary drawn by the series of straight lines connecting each point listed in this table to the next point in sequence and finally returning to Point A, excluding Restricted Areas 59 and 60 as set out in chart 4 for illustrative purposes.

Point	Latitude	Longitude	Area (hectares)
A.	52° 52.84' N	01° 27.45' E	1032.0
B.	52° 50.08' N	01° 32.84' E	
C.	52° 49.36' N	01° 32.45' E	
D.	52° 52.52' N	01° 26.47' E	

Explanatory Note

(This note does not form part of the byelaw)

This byelaw sets restrictions for fishing activities to protect marine habitats and species within or adjacent to marine protected areas from fishing activities. Restrictions include areas restricted to specified fishing gear and types of fishing activity and restrictions related to the use of fishing gear.

The Marine Protected Areas to which these restrictions apply are in relation to Special Areas of Conservation (SAC) as provided in Article 3 Council Directive 92/43/EEC on the conservation of natural habitats and of wild fauna and flora (the Habitats Directive) or in relation to Marine Conservation Zones (MCZ) as provided in the Cromer Shoal Chalk Beds Marine MCZ Order 2016.

Restrictions set out in the schedule of this byelaw are in relation to the Wash and North Norfolk Coast SAC, the Humber Estuary SAC, Haisborough, Hammond and Winterton SAC, Inner Dowsing, Race Bank and North Ridge SAC and the Cromer Shoal Chalk Beds MCZ.

Wash and North Norfolk Coast SAC

Certain sub-features of the MPA have been assessed as requiring protection from fishing activities using bottom towed gear as follows:

- Subtidal biogenic reef: *Sabellaria* spp. (Ross worm)
- Subtidal stony reef
- Intertidal biogenic reef: mussel beds
- Intertidal seagrass beds
- Subtidal mixed sediments
- Subtidal mud
- Intertidal sand
- Intertidal *Sabellaria*
- Circa Littoral Rock
- Harbour seals

Some or part of the above features as they occur within the Wash and North Norfolk Coast SAC are closed to fishing by use of bottom towed gear (and fishing by hand and crab-tilling for area 53) with the effect of ensuring site integrity. Closures may include habitats and sub-features other than those set out above to ensure that the size, shape and orientation of the restricted area is clear and effective at providing a protective effect.

Humber Estuary SAC

The sub-feature 'intertidal seagrass beds' has been assessed as requiring protection from fishing activity using bottom towed gear and 'handwork' fishing activity.

Restrictions in the Humber Estuary SAC include a Restricted Area in relation to fishing with bottom towed gear, fishing by hand and crab-tilling. The Restricted Area does not apply to fishing by hand when a rod and line or hook and line is used.

Cromer Shoal Chalk Beds MCZ

The features below have been assessed as requiring protection from fishing activity using bottom towed gear.

- Moderate energy infralittoral rock
- High energy infralittoral rock
- Moderate energy circalittoral rock
- High energy circalittoral rock
- Subtidal chalk
- Peat and clay exposures

These features have been closed to fishing activity by bottom towed gear to ensure that the conservation objectives of the site are met. Closures may include habitats and sub-features other than those set out above to ensure that the size, shape and orientation of the restricted area is clear and effective at providing a protective effect.

The Artisanal Shrimp Management Area

A spatially restricted area 'the Artisanal Shrimp Management Area' within Area 35 is exempt from the closure only to activity specified within the Artisanal Shrimp Management Policy. This exemption applies to enable historic, low intensity, small scale activity. Assessment of this activity has determined that its continuation will not impact on the conservation objectives for the Cromer Shoal Chalk Beds MCZ.

Activity within the area will be closely monitored and restricted in accordance with the Artisanal Shrimp Management Policy.

Haisborough, Hammond and Winterton SAC

The sub-feature 'Subtidal biogenic reef: *Sabellaria* spp. (Ross worm)' has been assessed as requiring protection from fishing activity using bottom towed gear.

Some or part of the above features as they occur within the Haisborough, Hammond and Winterton SAC are closed to fishing by use of bottom towed gear with the effect of ensuring site integrity. Closures may include habitats and sub-features other than those set out above to ensure that the size, shape and orientation of the restricted area is clear and effective at providing a protective effect.

Inner Dowsing, Race Bank and North Ridge SAC

The sub-feature 'Subtidal biogenic reef: *Sabellaria* spp. (Ross worm)' has been assessed as requiring protection from fishing activity using bottom towed gear.

Some or part of the above features as they occur within the Inner Dowsing, Race Bank and North Ridge SAC are closed to fishing by use of bottom towed gear with the effect of ensuring site integrity. Closures may include habitats and sub-features other than those set out above to ensure that the size, shape and orientation of the restricted area is clear and effective at providing a protective effect.

Holders of Rights of Common

Paragraph 6 of this Byelaw specifically preserves personal "rights of common". These are particular, specialised and defined rights held by "commoners" in respect of registered "common land". "Rights of Common" relate only to registered common land and this Byelaw retains full force and effect against all other persons, including

those exercising their common law right of fishery and any person exercising a private or several right of fishery. If you have any doubts about the applicability of this Byelaw to you, you should seek guidance from the Authority before fishing for or taking any sea fisheries resources.

Secured and Stowed Exemption

Restrictions include a requirement to have bottom towed gear secured and stowed when a fishing vessel is inside the Restricted Areas. Fishers are exempt from the requirement to secure and stow bottom towed gear if the vessel is fishing using a beam trawl up to the boundary of a Restricted Area or it will be fishing immediately upon leaving the Restricted Area. However, the gear must be suspended clear of the water. The exemption does not apply in the Humber Estuary Restricted Area (Restricted Area 39) or in Areas 31 to 35 which are considered to be of size significant enough to not require the exemption.

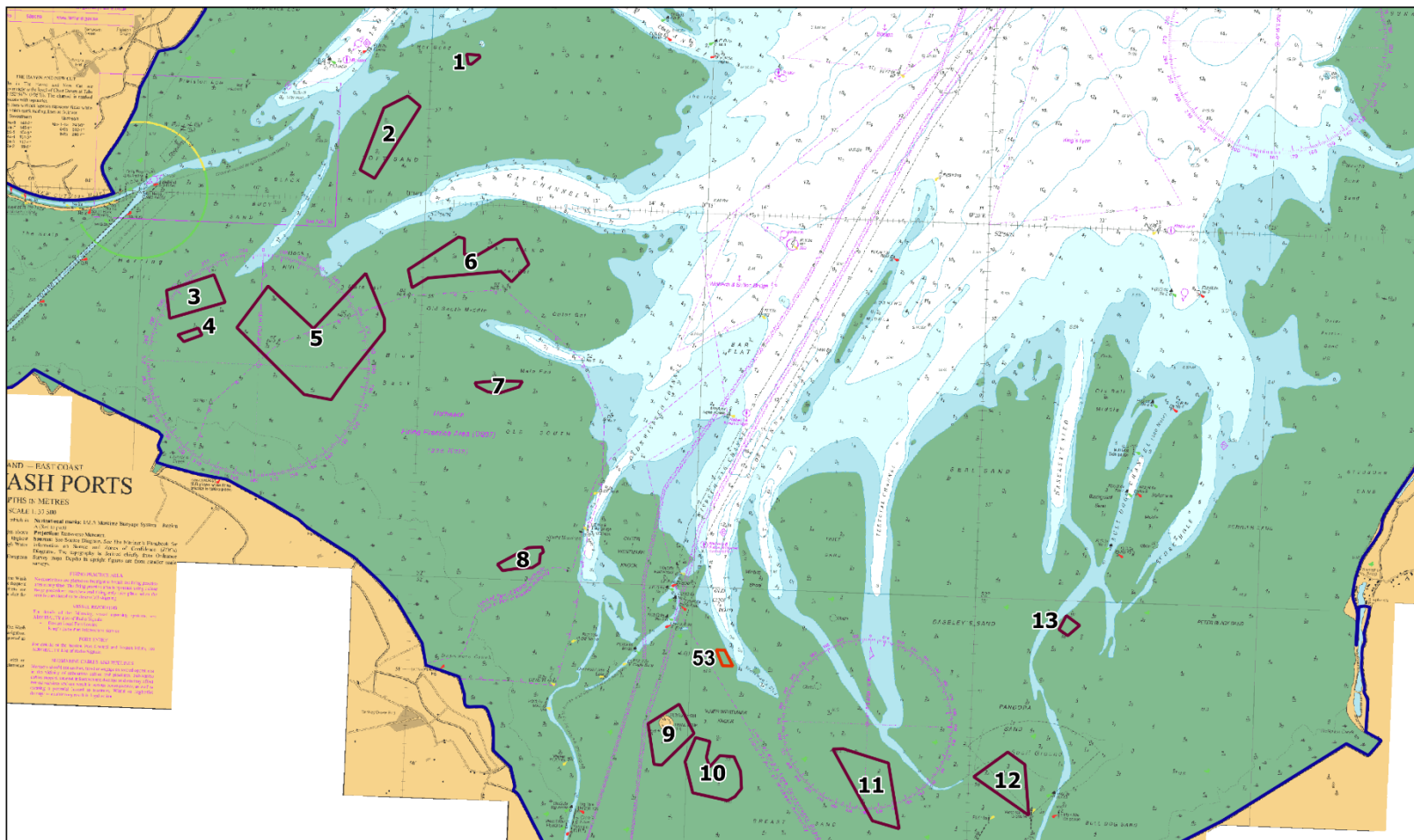


Chart 1: The Wash and North Norfolk Coast SAC - Restricted Areas 1 - 13 and 53

- Restricted area to bottom-towed gear
- Restricted area to bottom-towed gear, hand working and crab tiling
- Boundary of the Wash and North Norfolk Coast SAC

Not to be used for navigation - for illustrative purposes only

Date: 01 November 2023
Drawn by: EP
Projection: Lat Long WGS84

Chart not to be used for navigation
©British Crown and OceanWise 2023. All rights reserved.
Licence No.EK001-20180110.
This product has been derived in part from material
obtained from the UK Hydrographic Office with the
permission of the UK Hydrographic Office, His Majesty's
Stationary Office and other relevant authorities.

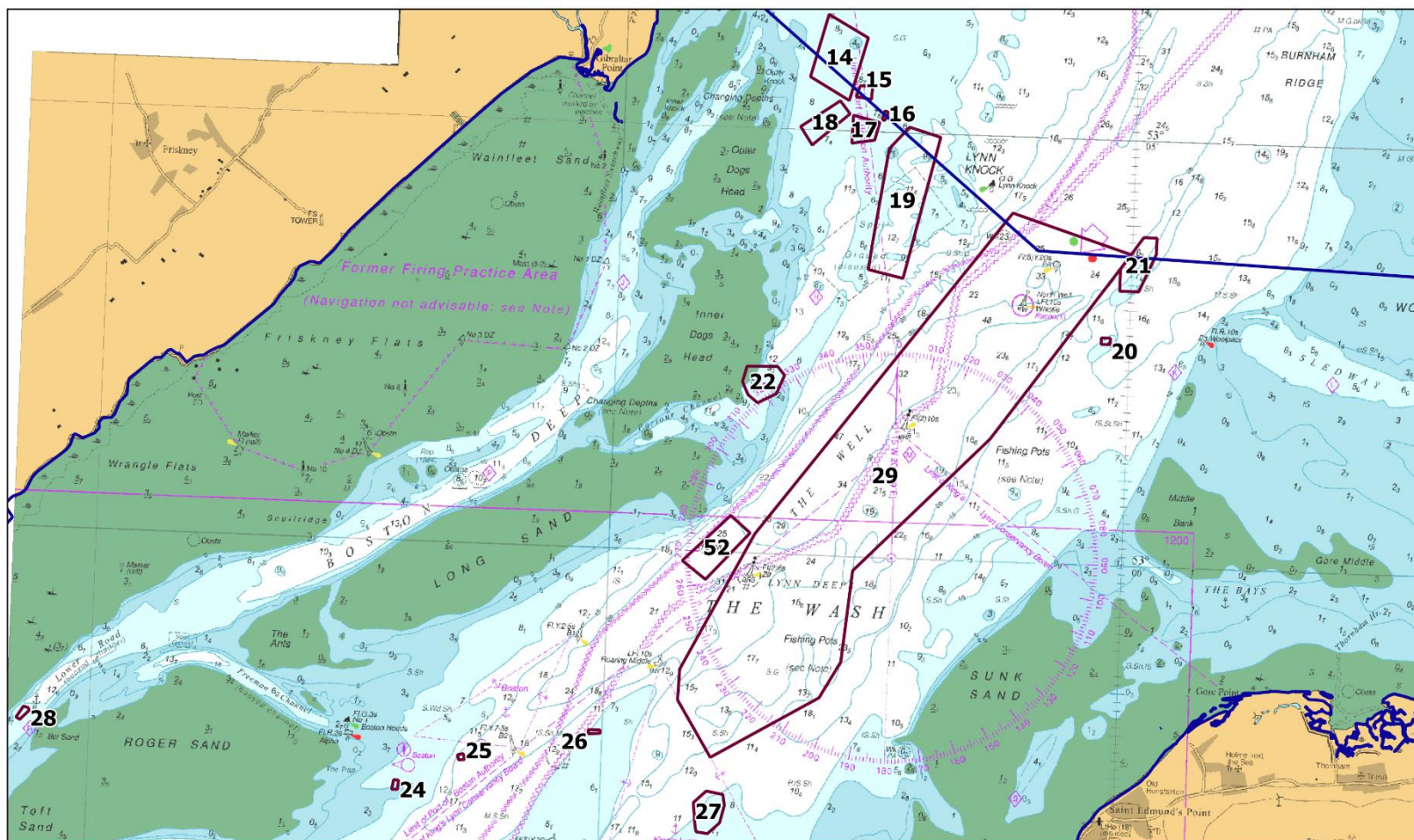


Chart 2: The Wash and North Norfolk Coast SAC - Restricted Areas 14 to 22, 24 to 29 and 52

- Boundary of the Wash and North Norfolk Coast SAC
- Restricted area to bottom-towed gear

Not to be used for navigation - for illustrative purposes only

Date: 02 November 2023
Drawn by: EP
Projection: Lat Long WGS84

Chart not to be used for navigation
©British Crown and OceanWise 2023. All rights reserved.
Licence No.EK001-20180110.
This product has been derived in part from material
obtained from the UK Hydrographic Office with the
permission of the UK Hydrographic Office, His Majesty's
Stationary Office and other relevant authorities.

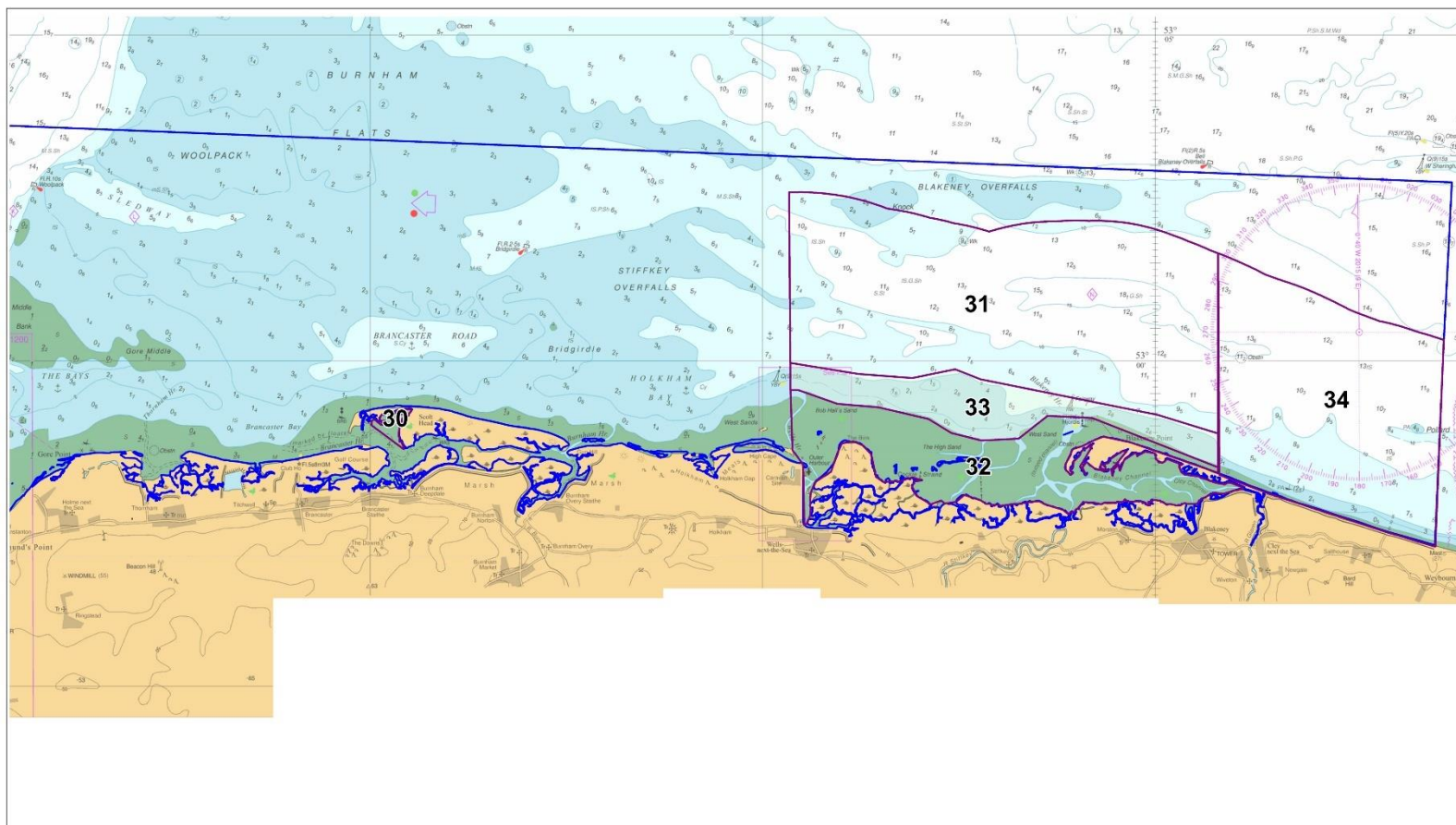


Chart 3: The Wash and North Norfolk Coast SAC – Restricted Areas 30 to 34

- Restricted area to bottom-towed gear
- Seasonal corridor (open to the fishery October - April)
- The Wash and North Norfolk Coast Coast SAC boundary

Not to be used for navigation – for illustrative purposes only

Contains public sector information licensed under the Open Government Licence v1.0 (c) British Crown and OceanWise 2019.
All rights reserved. Licence No. EK001-20180110. This product has been derived in part from material obtained from the UK Hydrographic Office with the permission of the UK Hydrographic Office, Her Majesty's Stationary Office and other relevant authorities.

Date: 01/05/2019
 Drawn by: SC
 Projection: Lat Long WSG84
 EMS boundary: JNCC download -
 UK SACs with MarineComponents 2103821

2019_05_NNC_Byelaw_Chart_3.WOR

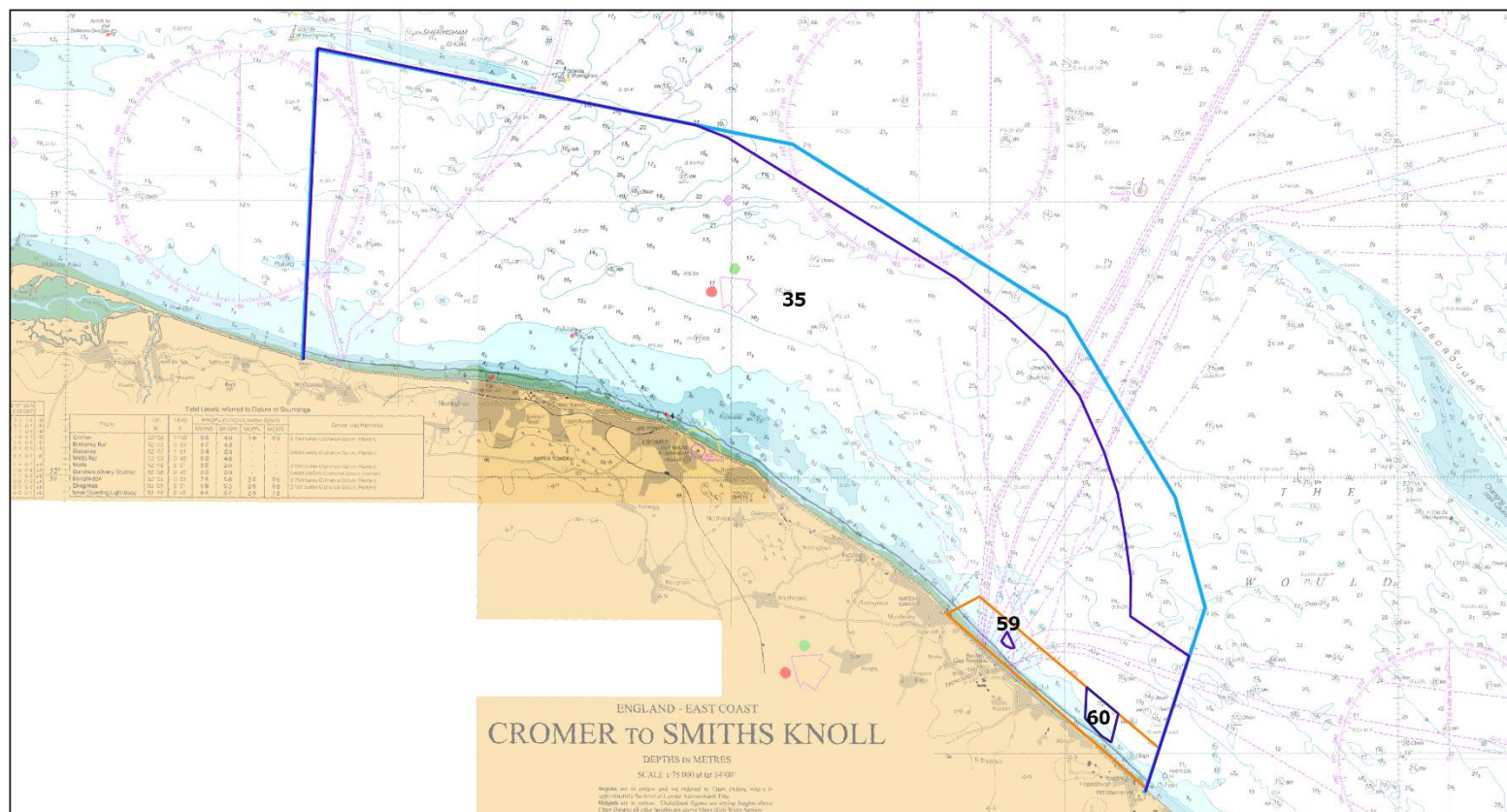


Chart 4: Cromer Shoal Chalk Beds MCZ - Restricted Areas 35,59 and 60 and the Artisanal Shrimp Management Area

- Cromer Shoal Chalk Beds MCZ boundary
- Restricted area to bottom towed gear
- Artisanal shrimp management area

NOT TO BE USED FOR NAVIGATION - FOR ILLUSTRATIVE PURPOSES ONLY

(c) British Crown and Oceanwise 2021. All rights reserved. Licence No.EK001-20180110. This product has been derived in part from material obtained from the Hydrographic Office with the permission of the UK Hydrographic office, Her Majesty's Stationary office and other relevant authorities.

Date: 01/10/2021
 Drawn by: TB
 Projection: Lat Long WGS1984
 EMS_boundary:
 JNCC_download_SAC's
 withmarinecomponents_21038

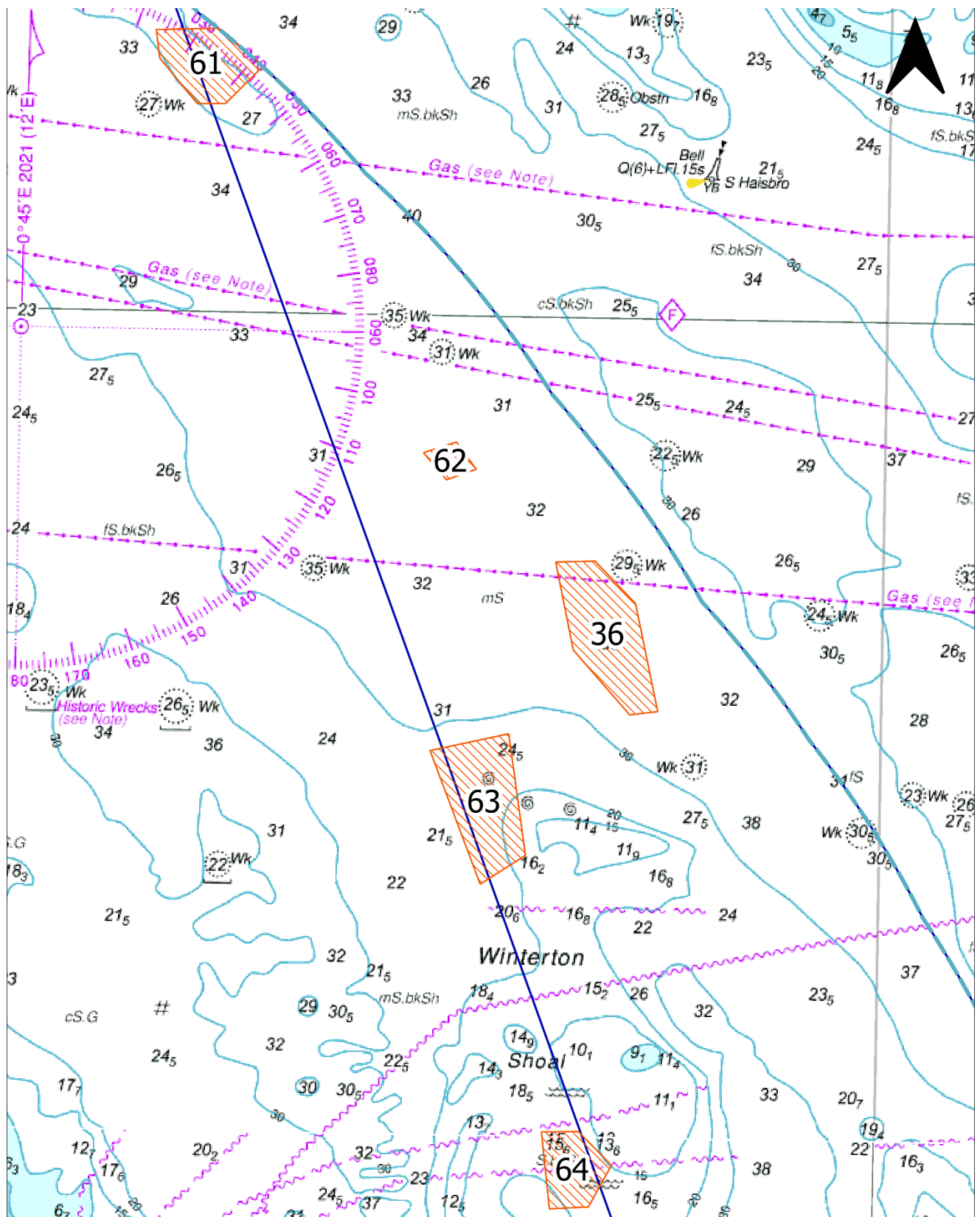
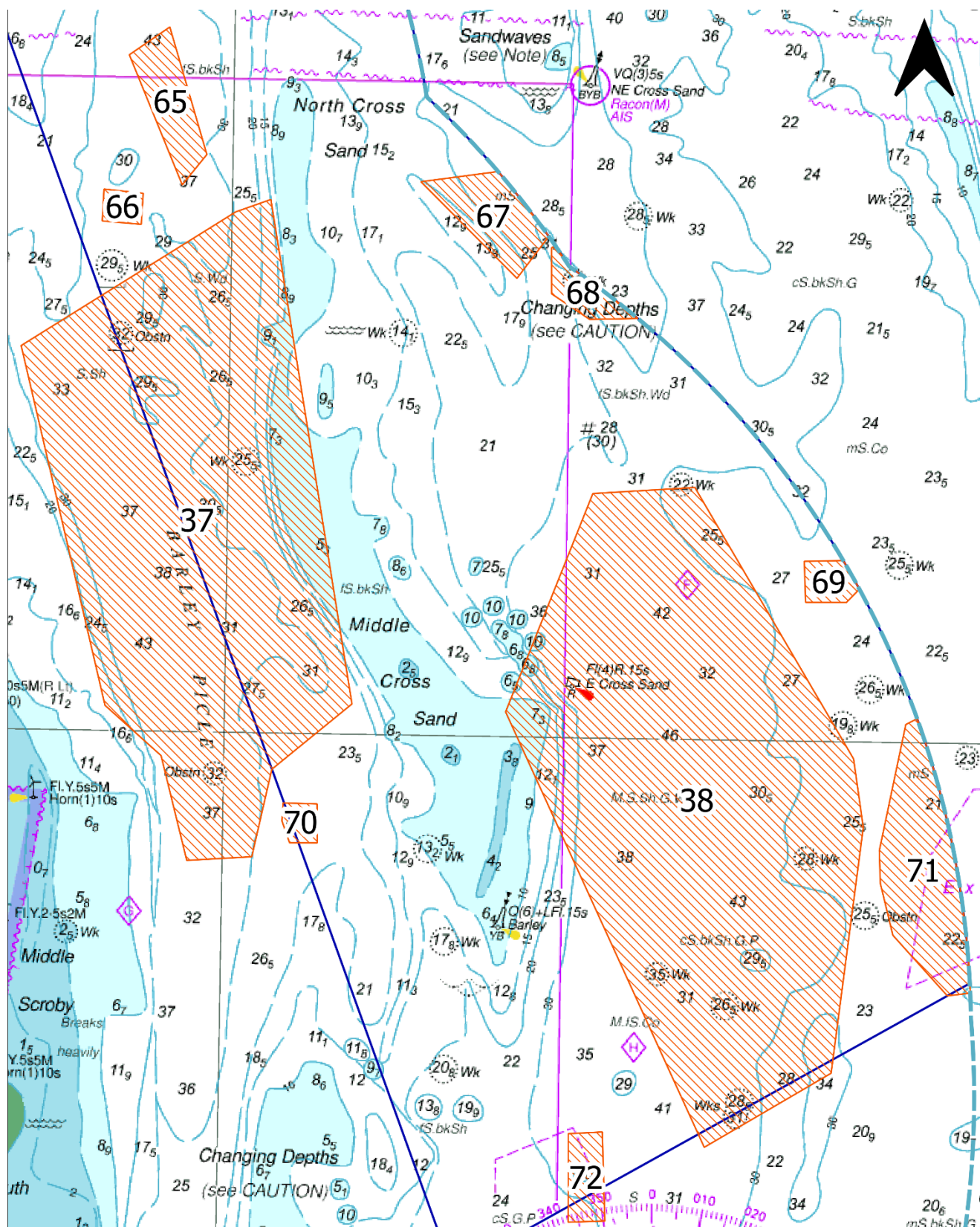


Chart 5: Haisborough, Hammond and Winterton SAC Restricted areas 36, 61-64

- Eastern IFCA 6nm district limit
- New proposed restricted areas to bottom towed gear
- Haisborough, Hammond and Winterton SAC boundary

Date: 14/08/2025; Drawn by: EP;
 Projection: WGS 84; Data: NE
 (c) British Crown and OceanWise
 2023. All rights reserved. Licence
 No.EK001-20180110.

This product has been derived in part
 from material obtained from the UK
 Hydrographic Office with the
 permission of the UK Hydrographic
 Office, His Majesty's Stationary Office
 and other relevant authorities.



Eastern



Chart 6: Haisborough, Hammond and Winterton SAC Restricted areas 37, 38, 65-72

- Eastern IFCA 6nm district limit
- New proposed restricted areas to bottom towed gear
- Haisborough, Hammond and Winterton SAC boundary

Date: 14/08/2025; Drawn by: EP;
 Projection: WGS 84; Data: NE
 (c) British Crown and OceanWise
 2023. All rights reserved. Licence
 No.EK001-20180110.
 This product has been derived in part
 from material obtained from the UK
 Hydrographic Office with the
 permission of the UK Hydrographic
 Office, His Majesty's Stationary Office
 and other relevant authorities.

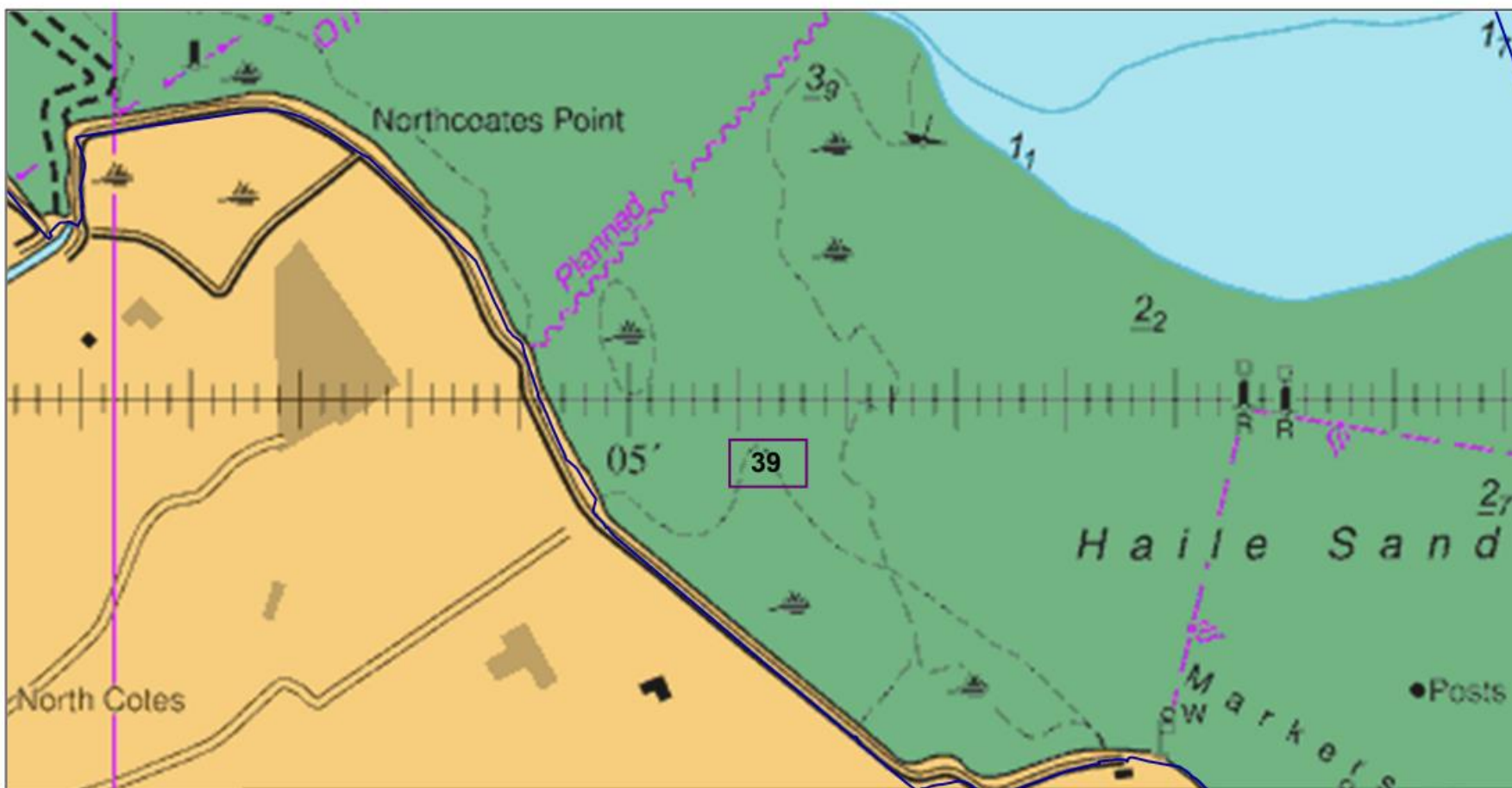


Chart 7: Humber Estuary SAC – Restricted Area 39

- 39 Restricted area to bottom-towed gear, hand working and crab tiling
- 39 Boundary of the Humber Estuary SAC

Not to be used for navigation - For illustrative purposes only

Date: 12 August 2020
 Drawn by: EQ
 Projection: WGS84

(c) British Crown and OceanWise 2020
 All rights reserved. Licence
 No.EK001-20180110.
 This product has been derived in part from
 material obtained from the UK Hydrographic
 Office with the permission of the UK
 Hydrographic Office, Her Majesty's
 Stationary Office and other relevant
 authorities.

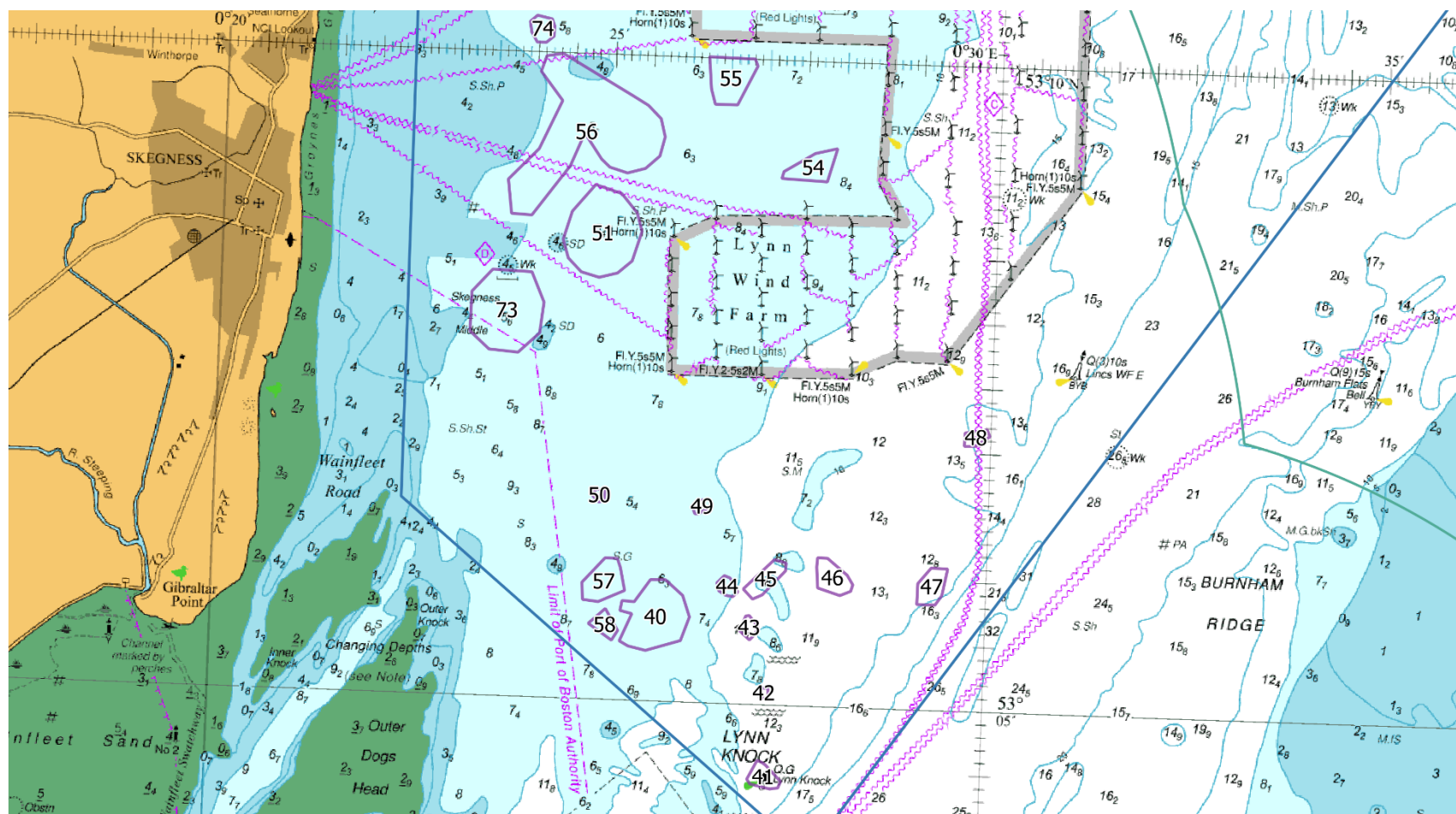


Chart 8: Inner Dowsing, Race Bank and North Ridge SAC – Restricted Areas 40-51, 54-58, 73 and 74

- Restricted area to bottom-towed gear
- IDRBNR SAC Boundary
- Eastern IFCA 6nm district limit

Not to be used for Navigation

Date: 15/08/2025 Drawn by: JT Projection:
WGS 84 (c) British Crown and OceanWise
2023. All rights reserved. Licence
No.EK001-20180110.

This product has been derived in part from
material obtained from the UK
Hydrographic Office with the permission of
the UK Hydrographic Office, His Majesty's
Stationery Office and other relevant
authorities.