

Wash Cockle and Mussel Byelaw 2021: Dredge Mussel Fishery Permit Conditions

2025 Wash Mussel Relaying Fishery



Persons operating under the Authority of a **Handwork Mussel Permit** for the purpose of fishing within the **relaying** mussel fishery issued under paragraph 8 of the Wash Cockle and Mussel Byelaw 2021 must fish in accordance with the following conditions.

These Permit Conditions apply should be read in conjunction with the Wash cockle and mussel byelaw including the restrictions set out in Schedule 2 of the byelaw which also apply when operating in the mussel relaying fishery.

Interpretation

1. In these permit conditions:
 - a. the “Wash and North Norfolk Coast Special Area of Conservation” means the Area specified in Schedule 2 of these permit conditions;
 - b. “mussel dredge” means a dredge consisting of a mesh or net held open by a frame the bottom edge of which consists of a bar, blade or teeth which dislodges mussels from the surface of the mussel bed.

Date of the relaying mussel fishery

2. The fishery will open from 1000hrs on 20 May 2025.
3. It is prohibited to fish for, take or remove from the fishery any mussels prior to the open date and time in paragraph 2.

Open / closed areas

4. It is prohibited to fish for, take or remove from the fishery mussels from any area except those areas specified as open to the fishery in Schedule 1.
5. Areas designated as open or closed may be subject to change and Eastern IFCA will provide a minimum of 12 hours’ notice of such via text or e-mail to Permit Holders and Nominated Deputies.

Relaying of mussels

6. It is prohibited to fish for, take or remove from the fishery mussels unless such are deposited on private shellfish beds within the area of the Wash and North Norfolk Coast Special Area of Conservation.

Fishing methods

7. It is prohibited to fish for, take or remove from the fishery any mussels using bottom-towed-gear except a 'mussel dredge'.
8. Mussel dredges must not have any mechanism or device which enables the continuous lift of mussels from the dredge to the vessel.

Vessel holds

9. It is prohibited to fish for, take or remove from the fishery any mussels using a vessel unless:
 - a. the dimensions of the hold have been recorded by an Inshore Fisheries and Conservation Officer; and
 - b. a 'certificate of hold inspection' has been issued which will record the dimensions of the hold which will be invalid if the hold is modified in any way which would alter its volume or capacity after the certificate has been issued

Biosecurity measures

10. It is prohibited to:
 - a. Relay any mussel catch outside of the Wash and North Norfolk Coast Special Area of Conservation; or
 - b. Sell catch for the purpose of it being re-laid outside of the Wash and North Norfolk Coast Special Area of Conservation.

Contact details

11. It is prohibited to fish for, take or remove from the fishery mussels unless a valid e-mail address or mobile telephone number which is capable of receiving text messages has been provided to Eastern IFCA.

Requirement to notify

12. It is prohibited to fish for, take or remove from the fishery any mussels unless the Permit Holder or Nominated Deputy has notified Eastern IFCA of the estimated time of commencement of mussel harvesting at least 12 hours prior to such commencement.
13. Notification referred to in condition 12 must include the vessel name and port letter numbers, the intended fishing method and the name of the mussel bed intended to be fished and such notification must be in the form of a text message to the designated mobile phone number or email to the designated email address.

The designated mobile phone number is: 07748182025

The designated email address is: enforcement@eastern-ifca.gov.uk

Catch Returns Data

14. The Permit Holder or Nominated Deputy must submit the 'required catch data' to Eastern IFCA via 'text message' to a designated mobile telephone number

or via email to a designated email address no later than 2 hours after returning to port.

15. The required catch data is as follows: the name and port letter numbers of the vessel used to fish for mussels, the fishing method, the estimated weight of mussels removed from the fishery, the name of the bed from which the mussels were removed and the destination of the mussels.

The designated mobile phone number is: 07748182025

The designated email address is: enforcement@eastern-ifca.gov.uk

Confirmation

The Permit Conditions come into effect at 0001hrs on 20 May 2025.

Signed:

Failure to comply with an exemption condition is an offence under section 163(2) of the Marine and Coastal Access Act 2009. The master, owner and charterer (if any) of a vessel used in the commission of an offence shall each be guilty of any such offence and liable to a fine on summary conviction.

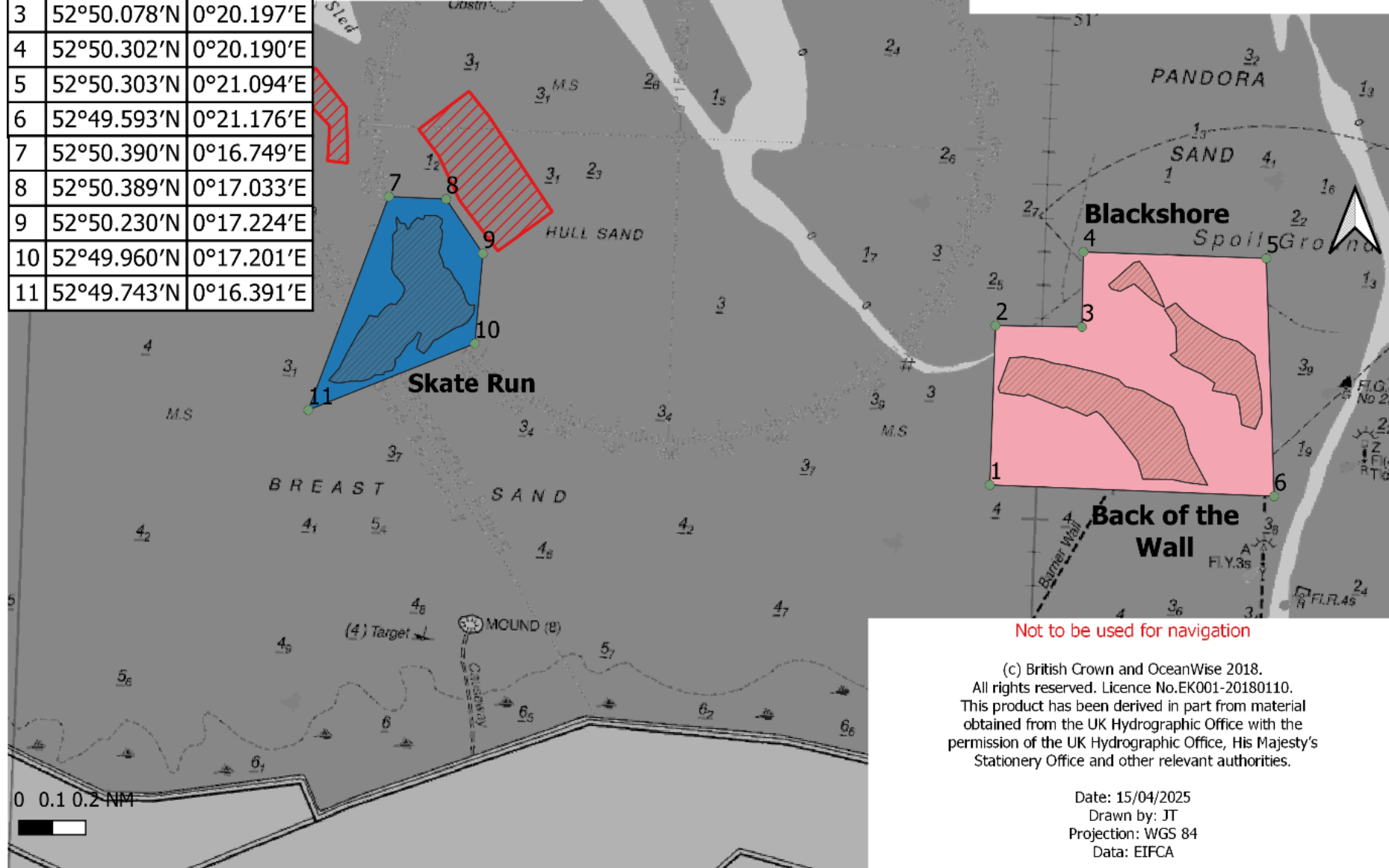
Permit conditions are subject to change and fishers will be notified of any amendments to the conditions.

Schedule 1 – Areas open to the 2025 Wash Mussel Fishery

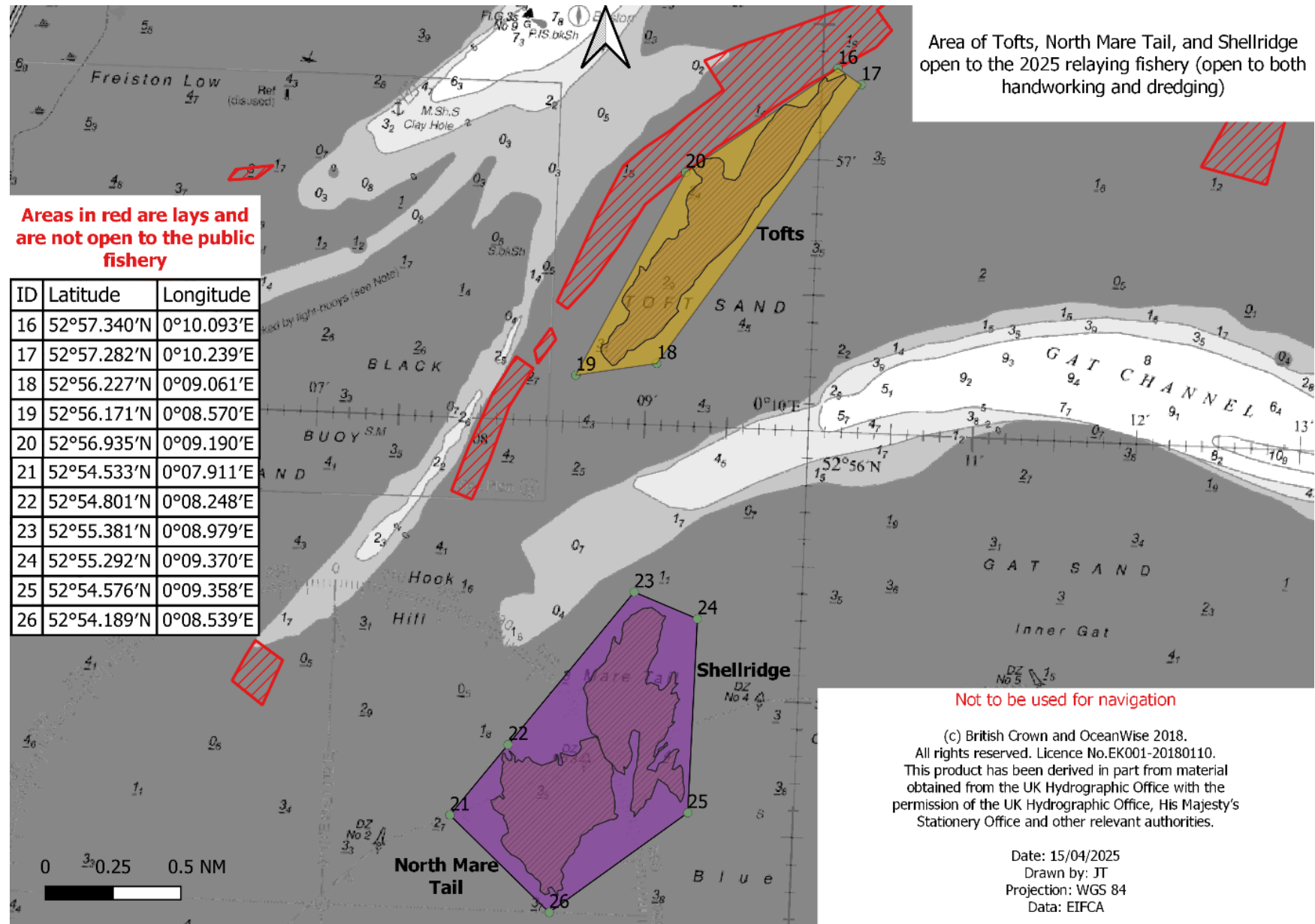
ID	Latitude	Longitude
1	52°49.595'N	0°19.770'E
2	52°50.073'N	0°19.769'E
3	52°50.078'N	0°20.197'E
4	52°50.302'N	0°20.190'E
5	52°50.303'N	0°21.094'E
6	52°49.593'N	0°21.176'E
7	52°50.390'N	0°16.749'E
8	52°50.389'N	0°17.033'E
9	52°50.230'N	0°17.224'E
10	52°49.960'N	0°17.201'E
11	52°49.743'N	0°16.391'E

Areas in red are lays
and are not open to the
public fishery

Areas of Skate Run, Blackshore and Back of the
Wall mussel beds open to the 2025 relaying
fishery (open to both handworking and
dredging)

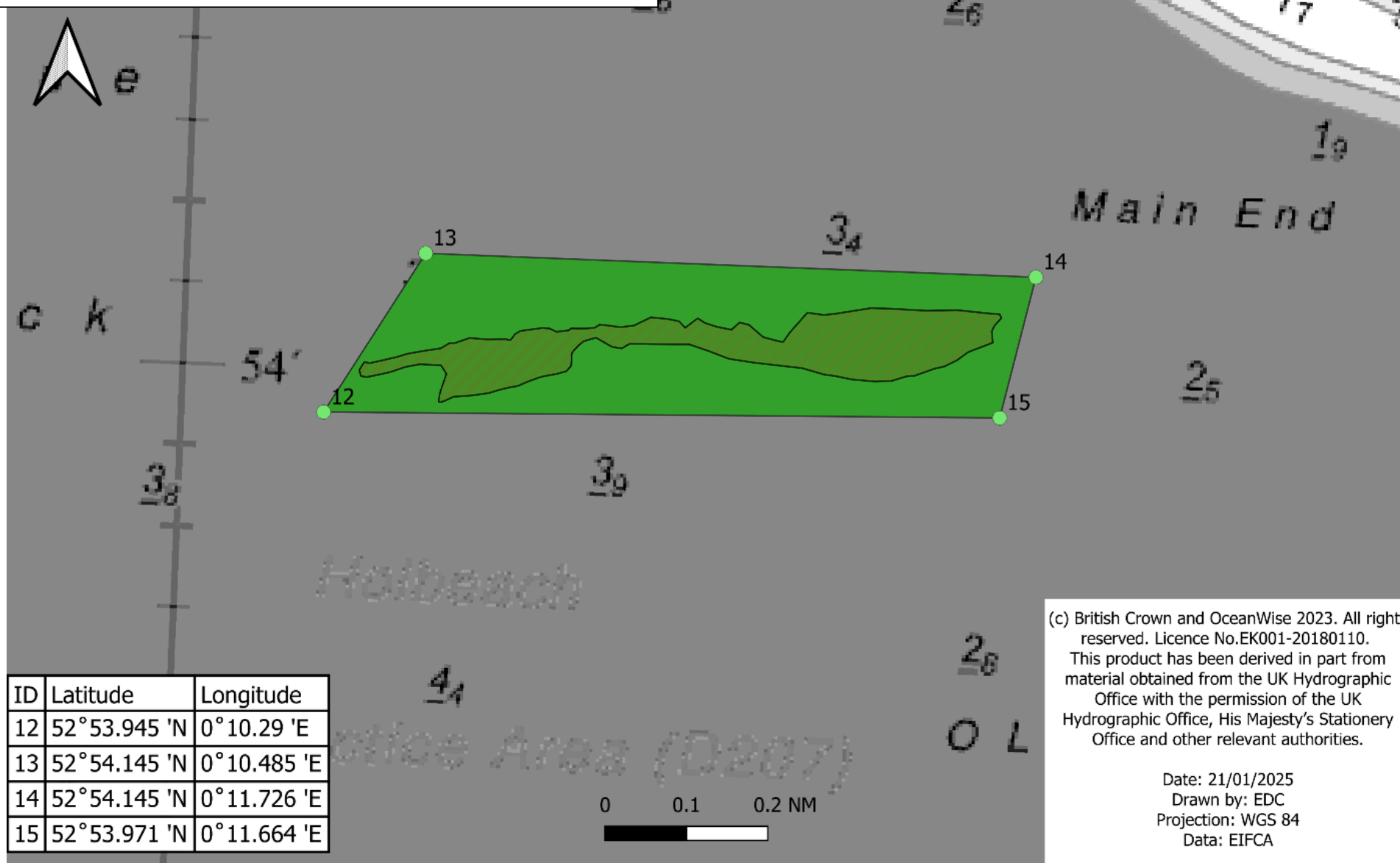


Schedule 1 – Areas open to the 2025 Wash Mussel Fishery



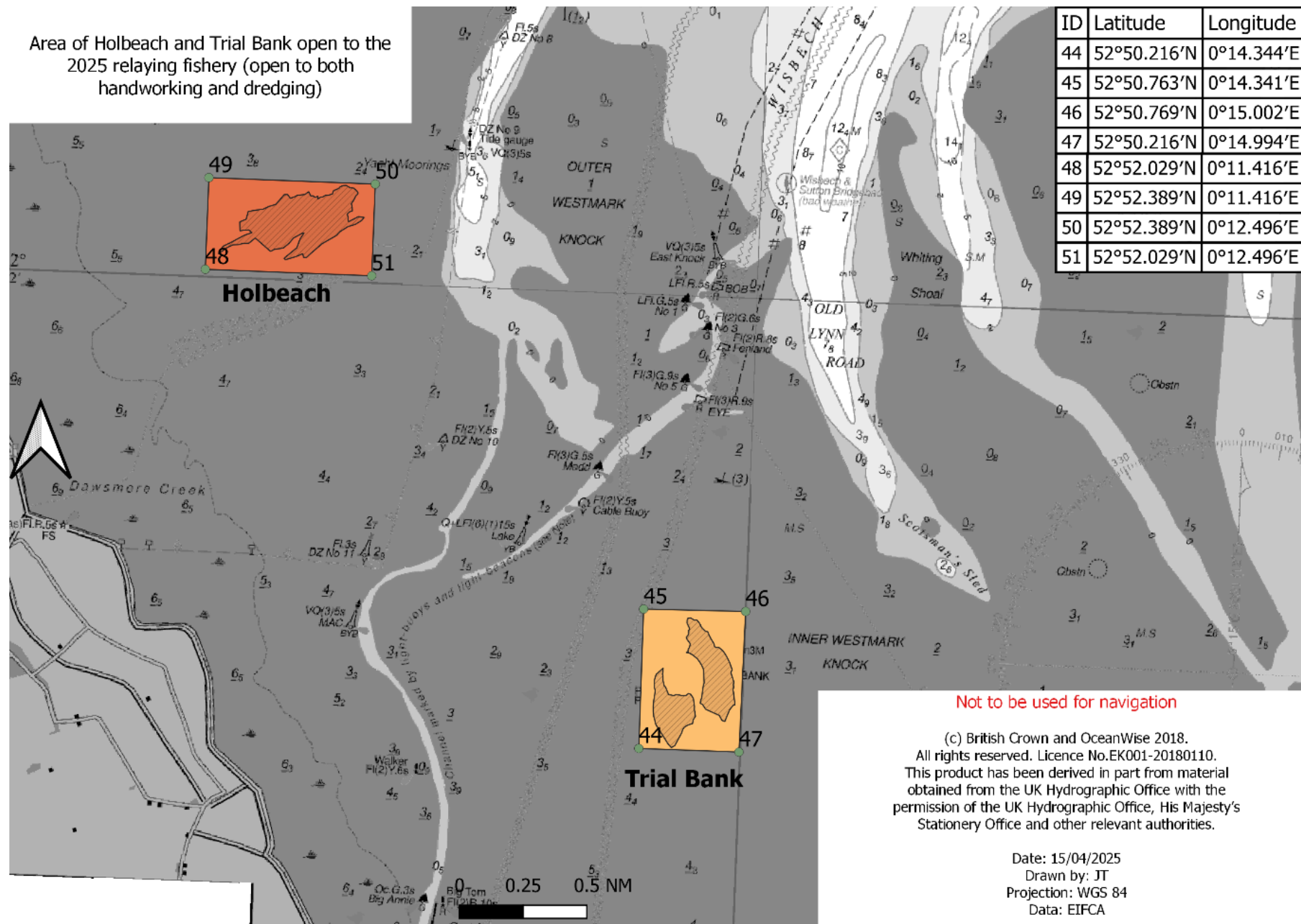
Area of Main End mussel bed open to the
2025 relaying fishery (hand-working only)

Not to be used for navigation



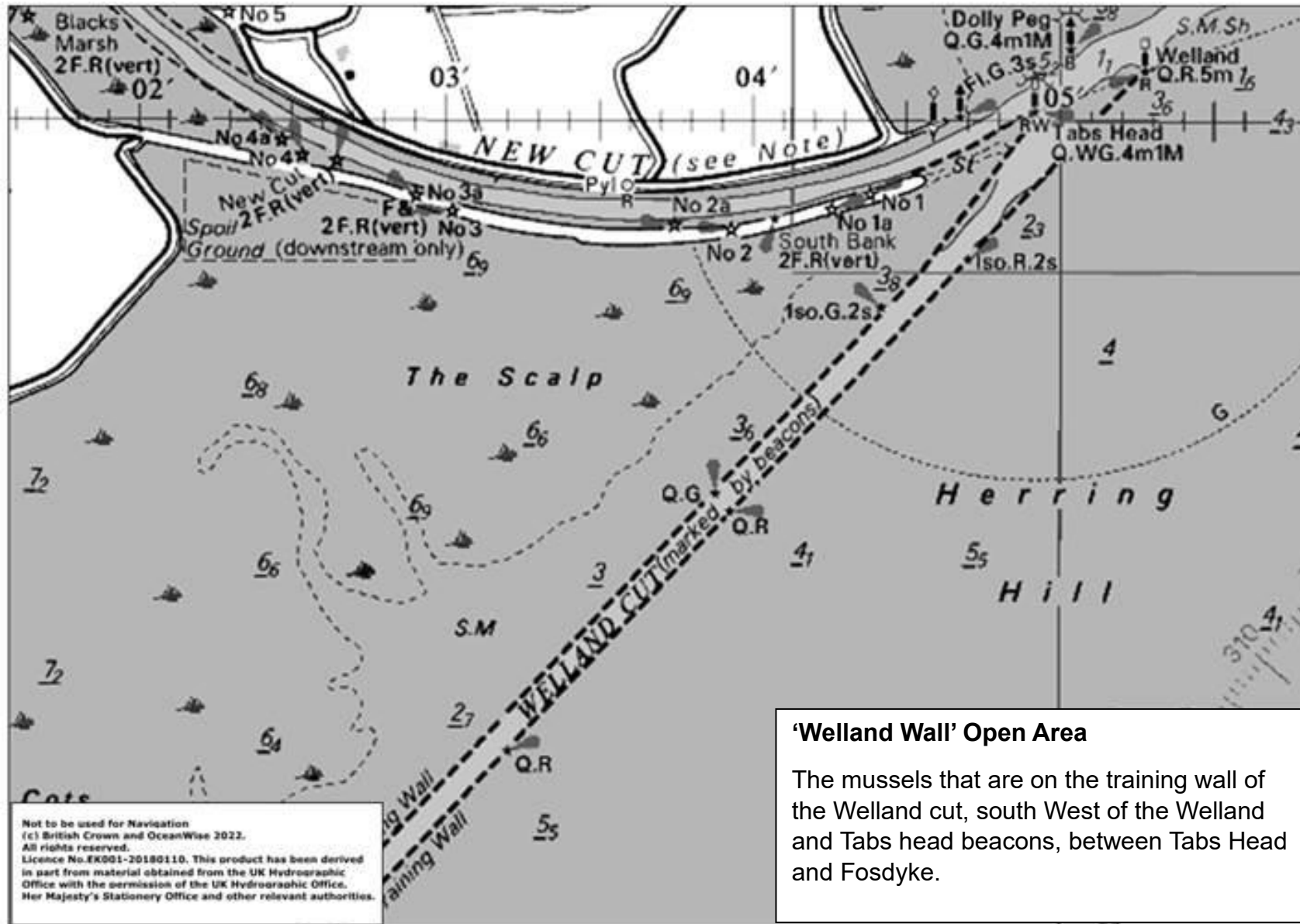
Schedule 1 – Areas open to the 2025 Wash Mussel Fishery

Area of Holbeach and Trial Bank open to the 2025 relaying fishery (open to both handworking and dredging)



Schedule 1 – Areas open to the 2025 Wash Mussel Fishery

Welland Wall Open Area



Schedule 2: Wash and North Norfolk Coast Special Area of Conservation

Wash and North Norfolk Coast Special Area of Conservation

The following table sets out the co-ordinates of the Wash and North Norfolk Coast Special Area of Conservation with regards to permit condition 6.

The Wash and North Norfolk Coast Special Area of Conservation is defined by a boundary drawn by the series of straight lines connecting points A to D and a line connecting point D to E which follows the land boundary which is to be taken as mean high water springs.

Point	Latitude	Longitude
A	53° 07'.69 N	00° 20'.55 E
B	53° 03'.66 N	00° 28'.16 E
C	53° 02'.73 N	01° 07'.55 E
D	52° 57'.16 N	01° 07'.10 E
E	53° 07'.69 N	00° 20'.55 E