

**NOTICE TO MARINERS**  
**UNCREWED SURFACE VESSELS (USVs)**  
**Survey Operations – Sheringham Nearshore, April/May 2026**

**Activity:**

Operation of remotely piloted Uncrewed Surface Vessels (USVs) are planned in the southern North Sea, UK, during April and May 2026. The vessels will be engaged in survey activities on behalf of Sheringham Shoal and Dudgeon Extensions ProjCo Limited in the nearshore area of Sheringham (0-12 LAT) as outlined in Figure 1. It is expected there will be two USVs operational at any one time.

**Dates:**

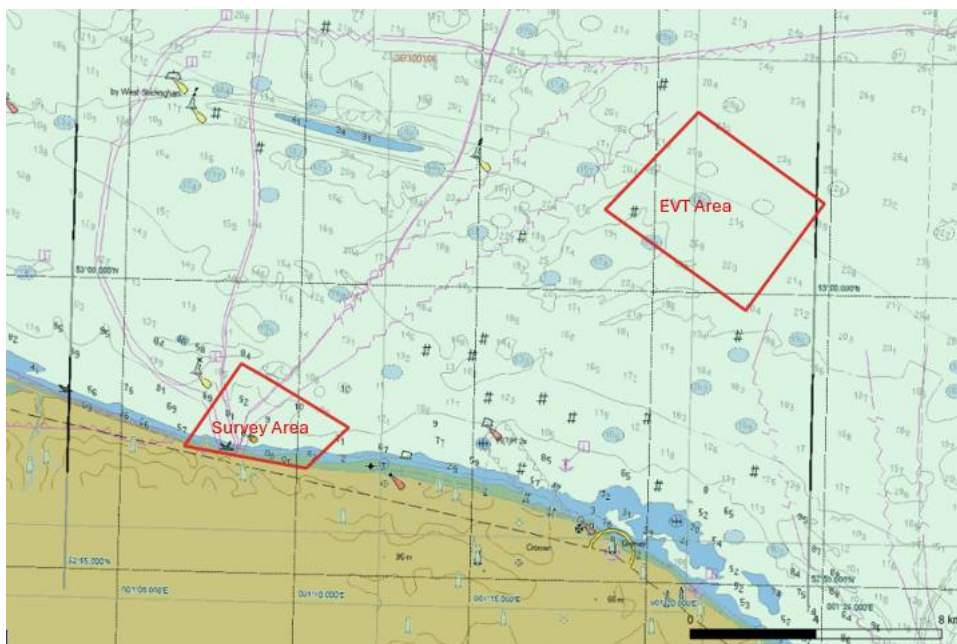
Survey operations are expected to commence from 14<sup>th</sup> April 2026 for approximately two weeks, subject to weather and other operational factors.

**Location:**

Figure 1 below indicates the operational areas. In addition to the survey area, the USVs will transit from/to Lowestoft, UK.

Although the USV are uncrewed, they are managed throughout the 24 hour operation, piloted remotely using 360 degree cameras and other navigational aids.

*Figure 1: Operational Area (red polygons)*



(EVT Area – temporary deployment of equipment to the seabed for survey equipment testing)

*Survey area coordinates are indicated in Table 1 below. Table 1: Survey Area (WGS84)*

Lat_DDM	Lon_DDM
52°57.53805' N	001°11.44925' E
52°56.81820' N	001°10.27349' E
52°58.58942' N	001°08.35584' E
52°57.14785' N	001°06.79517' E

The details of the Uncrewed Surface Vessels (USVs) that will operate on the survey are shown below. It is expected that no more than 2 USVs will be operational at any one time.

Table 2: USVs with Towed Sensors

Name:	X28 UNCREWED	X30 UNCREWED	X05 UNCREWED
MMSI:	232053988	232059122	232059837
Call Sign	MOXJ2	MRNT4	MRSM9
Length:	4.5m	5.8m	4.5m
Beam:	2.2m	2.2m	2.2m
Speed:	3.5kts	3.5kts	3.5kts
Draught:	1.5m	1.1m	1.5m
Tonnage:	750kg	2,100kg	750kg



Figure 2: XO-450 USV

The USV sends real time images and situational awareness data over satellite to a team of operators keeping watch and controlling the vessel remotely 24/7.

**Safety Precautions:** The USV is equipped with the following to make it conspicuous to other marine traffic:

- AIS
- Navigation Lights & Sound Signal
- Active Radar Reflector
- Superstructure Painted Yellow

A Support vessel, Predator, will escort the USV from Lowestoft Port ports to clear water (approx. 0.5nm from port) The Support Vessel will then remain in port and escort the USVs back into port at the end of operations.

Table 3: Support Vessel details

Vessel Details	Operator / Area	Contact Info	Photo
<b>Predator</b> <b>Call Sign:</b> MPJE3 <b>MMSI:</b> 235059476 <b>Length: 10m</b> <b>Beam: 5m</b> <b>Max Draught: 1.5m</b>	<b>Captain &amp; Owner:</b> James Taylor Predator Marine Ltd	<b>Mob:</b> +44 7917 005 666	

Seafarers are asked to avoid contact with the vessel and be aware of the operational area during this period.

**XOCEAN Emergency Contact Details:**

- |  |                      |  |
|--|----------------------|--|
| ▪ XOCEAN Operations Centre                           | +353 1 223 9979      | <a href="mailto:XOC@xocean.com">XOC@xocean.com</a>                                   |
| ▪ Robert Mitchelmore (Project Manager)               | +44 (0) 2080 982 105 | <a href="mailto:robert.mitchelmore@xocean.com">robert.mitchelmore@xocean.com</a>     |
| ▪ Stephen Leydon (Marine Superintendent)             | +353 1 223 9955      | <a href="mailto:stephen.leydon@xocean.com">stephen.leydon@xocean.com</a>             |
| ▪ Clodagh Cunningham (Programme Manager)             | +353 (0) 876768806   | <a href="mailto:clodagh.cunningham@xocean.com">clodagh.cunningham@xocean.com</a>     |
| • Onshore Fisheries Liaison Officer Contact Details: | +44 (0) 7702 730891  | <a href="mailto:n.proctor@precisionmarine.co.uk">n.proctor@precisionmarine.co.uk</a> |