



# Notice to Mariners

<b>Hughes Doc No:</b>	1835-NTC-038				<b>Hughes Revision No:</b>	C-01		
<b>Revision Status:</b>	Draft	<input type="checkbox"/>	Information	<input checked="" type="checkbox"/>	Review	<input type="checkbox"/>	Approved	<input type="checkbox"/>
<b>Issue Date:</b>	31/03/2026							

	Print	Signed
<b>Approved By:</b>	Dave Roberts	

THIS DOCUMENT IS UNCONTROLLED ONCE PRINTED



Record of Issue				
Revision	Drafted	Checked	Approved	Date
A-01	D. Roberts	M. Clements	D. Roberts	31/03/2026
C-01	D. Roberts	M. Clements	D. Roberts	31/03/2026

Document Change Record			
Revision	Description of Changes	Pages	Section
A-01	Issued for internal review	All	All
C-01	Issued for Information	All	All

Statement of Copyright
<p>This document is the intellectual property of HSSL Services Ltd. Possession, use and reference of this document is intended for workers of HSSL Services Ltd., authorised clients and subcontractors. All rights are reserved. This document may not in any part be replicated, reproduced, held physically or digitally, communicated or issued in by any means or in any format without the express permission of HSSL Services Ltd.</p>



## 1 INTRODUCTION

### 1.1 Project Overview

As part of East Anglia 2 Offshore Wind Farm (EA2) development plan to install offshore wind turbines within the East Anglia HUB. Hughes Subsea Services Ltd (now OEG) are contracted to dispose of 23 confirmed UXO within the EA2 CDM area during their 2026 return. During this disposal campaign other works will also be carried out such as Archaeology and debris relocations, fishing net recovery/relocation and boulder relocations.

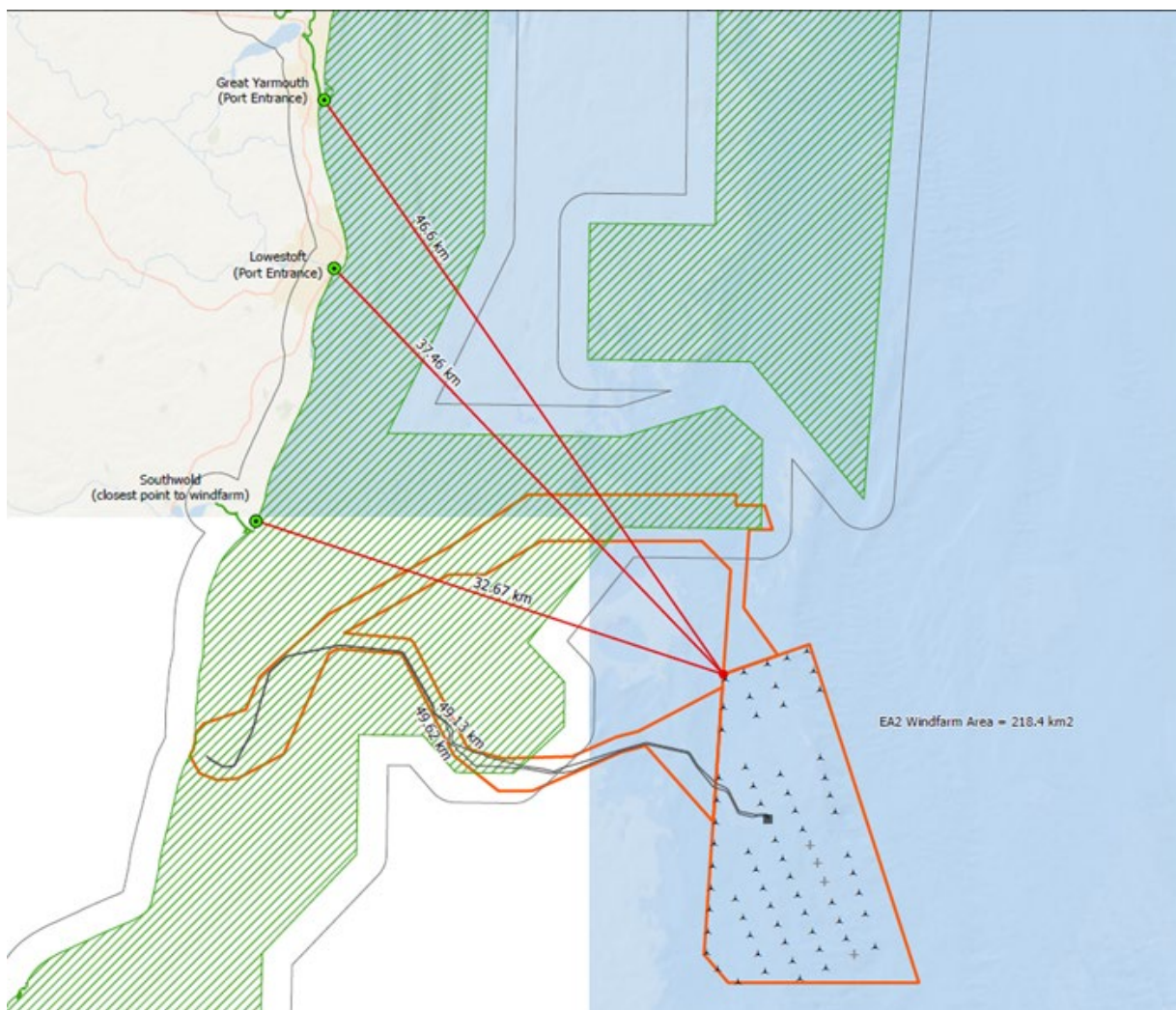


Figure 1: East Anglia Two Field Area



## 2 Operations

### 2.1 Area of Operations

The area of operations for **Northern Victoria** is linked directly to within the EA2 CDM area which includes offshore wind farm and the Export Cable Route.

#### 2.1.1 EA3 Field Area Coordinates (Boundary)

The Field boundary coordinates are contained in the below table.

Ref ID	WGS 84/UTM Zone 31N		World Geodetic System (WGS 84)					
			Decimal Degrees		Degrees Decimal Minutes		Degree Minutes Seconds	
	Eastings (m)	Northings (m)	Lat (DD)	Long (DD)	Lat (DDM)	Long (DDM)	Lat (DMS)	Long (DMS)
1	407760	5801248	52.3529	1.6471	52° 21.174' N	1° 38.826' E	52° 21' 10.44" N	1° 38' 49.56" E
2	462781	5800677	52.3551	2.4521	52° 21.306' N	2° 27.126' E	52° 21' 18.36" N	2° 27' 7.56" E
3	461258	5762173	52.0093	2.4355	52° 0.558' N	2° 26.13' E	52° 0' 33.48" N	2° 26' 7.8" E
4	402239	5771359	52.0825	1.5761	52° 4.95' N	1° 34.566' E	52° 4' 57.00" N	1° 34' 33.96" E

#### 2.1.2 ECR Information

The ECR boundary coordinates are contained in the below table.

Ref ID	WGS 84/UTM Zone 31N		World Geodetic System (WGS 84)					
			Decimal Degrees		Degrees Decimal Minutes		Degree Minutes Seconds	
	Eastings (m)	Northings (m)	Lat (DD)	Long (DD)	Lat (DDM)	Long (DDM)	Lat (DMS)	Long (DMS)
1	440958.9509	5786401.2241	52.2249	2.1356	52°13.4921'N	2°8.1379'E	52°13'29.52"N	2°8'8.27"E
2	441018.5745	5787264.7058	52.2326	2.1364	52°13.9582'N	2°8.1812'E	52°13'57.49"N	2°8'10.87"E
3	444959.8026	5788632.1383	52.2453	2.1938	52°14.7203'N	2°11.6300'E	52°14'43.22"N	2°11'37.80"E
4	446756.0030	5789255.3408	52.2511	2.2200	52°15.0670'N	2°13.2025'E	52°15'4.02"N	2°13'12.15"E
5	447944.5277	5785574.4477	52.2181	2.2380	52°13.0884'N	2°14.2811'E	52°13'5.30"N	2°14'16.86"E
6	454030.0453	5766727.4358	52.0492	2.3296	52°2.9547'N	2°19.7783'E	52°2'57.28"N	2°19'46.70"E
7	441334.8303	5766727.5177	52.0480	2.1445	52°2.8828'N	2°8.6717'E	52°2'52.97"N	2°8'40.30"E
8	439730.1637	5768605.6627	52.0648	2.1208	52°3.8855'N	2°7.2480'E	52°3'53.13"N	2°7'14.88"E



Ref ID	WGS 84/UTM Zone 31N		World Geodetic System (WGS 84)					
			Decimal Degrees		Degrees Decimal Minutes		Degree Minutes Seconds	
	Easting (m)	Northings (m)	Lat (DD)	Long (DD)	Lat (DDM)	Long (DDM)	Lat (DMS)	Long (DMS)
9	440890.3288	5785407.4235	52.2159	2.1348	52°12.9556'N	2°8.0880'E	52°12'57.34"N	2°8'5.28"E
10	440958.9509	5786401.2241	52.2249	2.1356	52°13.4921'N	2°8.1379'E	52°13'29.52"N	2°8'8.27"E
11	444014.8994	5797744.6140	52.3272	2.1785	52°19.6296'N	2°10.7089'E	52°19'37.78"N	2°10'42.54"E
12	444288.4583	5796897.3929	52.3196	2.1826	52°19.1743'N	2°10.9582'E	52°19'10.46"N	2°10'57.49"E
13	442737.3867	5796914.4085	52.3196	2.1599	52°19.1739'N	2°9.5928'E	52°19'10.43"N	2°9'35.57"E
14	442376.5615	5791688.9119	52.2726	2.1555	52°16.3532'N	2°9.3289'E	52°16'21.19"N	2°9'19.73"E
15	443199.1549	5790545.4644	52.2624	2.1677	52°15.7415'N	2°10.0636'E	52°15'44.49"N	2°10'3.82"E
16	443514.4464	5790107.1875	52.2585	2.1724	52°15.5071'N	2°10.3452'E	52°15'30.43"N	2°10'20.71"E
17	444652.3187	5788525.4666	52.2443	2.1893	52°14.6609'N	2°11.3609'E	52°14'39.65"N	2°11'21.66"E
18	441018.5746	5787264.7058	52.2326	2.1364	52°13.9582'N	2°8.1812'E	52°13'57.49"N	2°8'10.87"E
19	441498.5069	5794215.2137	52.2952	2.1422	52°17.7102'N	2°8.5305'E	52°17'42.61"N	2°8'31.83"E
20	439579.9186	5796143.3015	52.3123	2.1137	52°18.7377'N	2°6.8220'E	52°18'44.26"N	2°6'49.32"E
21	428889.0793	5796143.2439	52.3110	1.9569	52°18.6608'N	1°57.4141'E	52°18'39.65"N	1°57'24.85"E
22	425164.2378	5793917.9618	52.2905	1.9028	52°17.4310'N	1°54.1661'E	52°17'25.86"N	1°54'9.97"E
23	422765.3176	5793917.9644	52.2902	1.8676	52°17.4110'N	1°52.0562'E	52°17'24.66"N	1°52'3.37"E
24	415767.2521	5790005.8952	52.2540	1.7660	52°15.2395'N	1°45.9601'E	52°15'14.37"N	1°45'57.61"E
25	419973.1181	5789637.4610	52.2513	1.8277	52°15.0785'N	1°49.6614'E	52°15'4.71"N	1°49'39.68"E
26	420238.2690	5789537.3786	52.2504	1.8316	52°15.0269'N	1°49.8958'E	52°15'1.61"N	1°49'53.75"E
27	420394.2085	5789354.3003	52.2488	1.8339	52°14.9294'N	1°50.0354'E	52°14'55.77"N	1°50'2.13"E
28	423908.9532	5782510.3503	52.1878	1.8869	52°11.2681'N	1°53.2162'E	52°11'16.09"N	1°53'12.97"E
29	424294.4028	5782200.6823	52.1851	1.8926	52°11.1043'N	1°53.5586'E	52°11'6.26"N	1°53'33.51"E
30	426385.8130	5781653.8095	52.1804	1.9233	52°10.8263'N	1°55.4008'E	52°10'49.58"N	1°55'24.05"E
31	430944.1860	5781791.1597	52.1823	1.9900	52°10.9358'N	1°59.3986'E	52°10'56.15"N	1°59'23.92"E
32	433903.9880	5783092.6198	52.1943	2.0330	52°11.6595'N	2°1.9804'E	52°11'39.57"N	2°1'58.83"E
33	435353.4683	5783461.6737	52.1978	2.0541	52°11.8688'N	2°3.2483'E	52°11'52.13"N	2°3'14.90"E
34	440958.9471	5786401.2135	52.2249	2.1356	52°13.4921'N	2°8.1379'E	52°13'29.52"N	2°8'8.27"E



Ref ID	WGS 84/UTM Zone 31N		World Geodetic System (WGS 84)					
			Decimal Degrees		Degrees Decimal Minutes		Degree Minutes Seconds	
	Eastings (m)	Northings (m)	Lat (DD)	Long (DD)	Lat (DDM)	Long (DDM)	Lat (DMS)	Long (DMS)
35	440339.4577	5777429.6579	52.1442	2.1281	52°8.6491'N	2°7.6885'E	52°8'38.94"N	2°7'41.31"E
36	438958.5486	5779026.9252	52.1584	2.1077	52°9.5015'N	2°6.4606'E	52°9'30.09"N	2°6'27.64"E
37	438216.6583	5779831.0716	52.1655	2.0967	52°9.9303'N	2°5.8012'E	52°9'55.82"N	2°5'48.07"E
38	435838.8731	5782506.0754	52.1893	2.0614	52°11.3569'N	2°3.6853'E	52°11'21.41"N	2°3'41.12"E
39	435838.8692	5782506.0742	52.1893	2.0614	52°11.3569'N	2°3.6853'E	52°11'21.41"N	2°3'41.12"E
40	434210.6675	5782067.5046	52.1851	2.0377	52°11.1088'N	2°2.2615'E	52°11'6.53"N	2°2'15.69"E
41	432278.1978	5781226.5523	52.1774	2.0096	52°10.6412'N	2°0.5759'E	52°10'38.47"N	2°0'34.55"E
42	429392.8810	5779970.9498	52.1657	1.9677	52°9.9422'N	1°58.0602'E	52°9'56.53"N	1°58'3.61"E
43	428314.1097	5779501.5012	52.1613	1.9520	52°9.6807'N	1°57.1199'E	52°9'40.84"N	1°57'7.20"E
44	427353.3587	5779495.2107	52.1612	1.9380	52°9.6698'N	1°56.2775'E	52°9'40.19"N	1°56'16.65"E
45	426047.6719	5779486.6717	52.1609	1.9189	52°9.6548'N	1°55.1325'E	52°9'39.29"N	1°55'7.95"E
46	423073.1398	5781855.9176	52.1818	1.8749	52°10.9082'N	1°52.4917'E	52°10'54.49"N	1°52'29.50"E
47	419593.1142	5788615.7859	52.2421	1.8224	52°14.5242'N	1°49.3421'E	52°14'31.45"N	1°49'20.52"E
48	419592.6162	5788616.7546	52.2421	1.8224	52°14.5247'N	1°49.3416'E	52°14'31.48"N	1°49'20.50"E
49	419592.6107	5788616.7664	52.2421	1.8224	52°14.5247'N	1°49.3416'E	52°14'31.48"N	1°49'20.50"E
50	415546.0962	5788971.2393	52.2447	1.7630	52°14.6795'N	1°45.7813'E	52°14'40.77"N	1°45'46.88"E
51	415300.5616	5788955.9924	52.2445	1.7594	52°14.6690'N	1°45.5658'E	52°14'40.14"N	1°45'33.95"E
52	415300.4655	5788956.0000	52.2445	1.7594	52°14.6690'N	1°45.5657'E	52°14'40.14"N	1°45'33.94"E
53	414765.8510	5788636.6125	52.2415	1.7517	52°14.4919'N	1°45.1009'E	52°14'29.51"N	1°45'6.05"E
54	411732.8947	5781948.1974	52.1809	1.7090	52°10.8561'N	1°42.5410'E	52°10'51.37"N	1°42'32.46"E
55	409225.0425	5784921.4118	52.2073	1.6716	52°12.4351'N	1°40.2931'E	52°12'26.11"N	1°40'17.58"E
56	410146.1482	5787101.5507	52.2270	1.6844	52°13.6199'N	1°41.0669'E	52°13'37.19"N	1°41'4.01"E
57	414761.8936	5791276.8949	52.2653	1.7510	52°15.9157'N	1°45.0574'E	52°15'54.94"N	1°45'3.44"E
58	419186.5242	5793750.3730	52.2882	1.8152	52°17.2898'N	1°48.9111'E	52°17'17.39"N	1°48'54.67"E
59	422830.5771	5795787.4831	52.3070	1.8681	52°18.4199'N	1°52.0879'E	52°18'25.19"N	1°52'5.28"E
60	422830.6154	5795787.5134	52.3070	1.8681	52°18.4199'N	1°52.0880'E	52°18'25.19"N	1°52'5.28"E



Ref ID	WGS 84/UTM Zone 31N		World Geodetic System (WGS 84)					
			Decimal Degrees		Degrees Decimal Minutes		Degree Minutes Seconds	
	Easting (m)	Northings (m)	Lat (DD)	Long (DD)	Lat (DDM)	Long (DDM)	Lat (DMS)	Long (DMS)
61	428034.2216	5799241.0970	52.3387	1.9437	52°20.3249'N	1°56.6221'E	52°20'19.50"N	1°56'37.33"E
62	441872.2232	5799240.9735	52.3404	2.1468	52°20.4233'N	2°8.8072'E	52°20'25.40"N	2°8'48.43"E
63	441870.5789	5799196.9529	52.3400	2.1468	52°20.3996'N	2°8.8061'E	52°20'23.97"N	2°8'48.37"E
64	441845.4533	5798524.2826	52.3339	2.1465	52°20.0366'N	2°8.7910'E	52°20'2.19"N	2°8'47.46"E
65	441845.4531	5798524.2753	52.3339	2.1465	52°20.0366'N	2°8.7910'E	52°20'2.19"N	2°8'47.46"E
66	443769.9689	5798503.1614	52.3340	2.1748	52°20.0372'N	2°10.4857'E	52°20'2.23"N	2°10'29.14"E
67	444005.9246	5797772.4090	52.3274	2.1783	52°19.6445'N	2°10.7008'E	52°19'38.67"N	2°10'42.05"E
68	444014.8994	5797744.6140	52.3272	2.1785	52°19.6296'N	2°10.7089'E	52°19'37.78"N	2°10'42.54"E
69	405908.3387	5783286.7079	52.1920	1.6235	52°11.5202'N	1°37.4089'E	52°11'31.21"N	1°37'24.54"E
70	405909.0747	5783355.0465	52.1926	1.6235	52°11.5570'N	1°37.4084'E	52°11'33.42"N	1°37'24.51"E
71	406012.2641	5783493.2436	52.1939	1.6249	52°11.6326'N	1°37.4966'E	52°11'37.96"N	1°37'29.80"E
72	406107.4678	5783647.6623	52.1953	1.6263	52°11.7169'N	1°37.5776'E	52°11'43.01"N	1°37'34.66"E
73	406286.7384	5783865.2261	52.1973	1.6289	52°11.8360'N	1°37.7314'E	52°11'50.16"N	1°37'43.88"E
74	406409.6153	5783971.1389	52.1982	1.6306	52°11.8944'N	1°37.8374'E	52°11'53.66"N	1°37'50.25"E
75	406522.2809	5784009.1662	52.1986	1.6323	52°11.9161'N	1°37.9357'E	52°11'54.96"N	1°37'56.14"E
76	409225.0430	5784921.4116	52.2073	1.6716	52°12.4351'N	1°40.2931'E	52°12'26.11"N	1°40'17.58"E
77	411732.8982	5781948.1933	52.1809	1.7090	52°10.8561'N	1°42.5410'E	52°10'51.37"N	1°42'32.46"E
78	411489.5953	5781818.7485	52.1797	1.7055	52°10.7839'N	1°42.3296'E	52°10'47.04"N	1°42'19.77"E
79	411245.0219	5781688.6254	52.1785	1.7020	52°10.7114'N	1°42.1171'E	52°10'42.68"N	1°42'7.02"E
80	410738.3052	5781419.0314	52.1760	1.6946	52°10.5611'N	1°41.6768'E	52°10'33.66"N	1°41'40.61"E
81	408662.8501	5780314.8043	52.1658	1.6646	52°9.9452'N	1°39.8740'E	52°9'56.71"N	1°39'52.44"E
82	407827.7007	5780208.9422	52.1647	1.6524	52°9.8798'N	1°39.1433'E	52°9'52.79"N	1°39'8.60"E
83	407775.6203	5780203.9961	52.1646	1.6516	52°9.8766'N	1°39.0977'E	52°9'52.60"N	1°39'5.86"E
84	407723.3278	5780202.4668	52.1646	1.6509	52°9.8753'N	1°39.0519'E	52°9'52.52"N	1°39'3.11"E
85	407723.0682	5780202.4678	52.1646	1.6509	52°9.8753'N	1°39.0517'E	52°9'52.52"N	1°39'3.10"E
86	407568.6971	5780203.0567	52.1646	1.6486	52°9.8740'N	1°38.9163'E	52°9'52.44"N	1°38'54.98"E



Ref ID	WGS 84/UTM Zone 31N		World Geodetic System (WGS 84)					
			Decimal Degrees		Degrees Decimal Minutes		Degree Minutes Seconds	
	Eastings (m)	Northings (m)	Lat (DD)	Long (DD)	Lat (DDM)	Long (DDM)	Lat (DMS)	Long (DMS)
87	407516.6759	5780204.9499	52.1646	1.6478	52°9.8745'N	1°38.8706'E	52°9'52.47"N	1°38'52.24"E
88	407486.0640	5780207.6558	52.1646	1.6474	52°9.8757'N	1°38.8438'E	52°9'52.54"N	1°38'50.63"E
89	407310.7729	5780226.5522	52.1647	1.6448	52°9.8841'N	1°38.6897'E	52°9'53.05"N	1°38'41.38"E
90	407289.3399	5780229.1559	52.1648	1.6445	52°9.8853'N	1°38.6709'E	52°9'53.12"N	1°38'40.25"E
91	407237.7536	5780237.8581	52.1648	1.6438	52°9.8894'N	1°38.6255'E	52°9'53.37"N	1°38'37.53"E
92	407186.8468	5780249.9157	52.1649	1.6430	52°9.8954'N	1°38.5807'E	52°9'53.73"N	1°38'34.84"E
93	407136.8375	5780265.2771	52.1651	1.6423	52°9.9032'N	1°38.5366'E	52°9'54.19"N	1°38'32.19"E
94	407122.3826	5780270.3958	52.1651	1.6421	52°9.9058'N	1°38.5238'E	52°9'54.35"N	1°38'31.43"E
95	406946.5182	5780334.5771	52.1656	1.6395	52°9.9387'N	1°38.3685'E	52°9'56.32"N	1°38'22.11"E
96	406912.0754	5780348.0578	52.1658	1.6390	52°9.9456'N	1°38.3381'E	52°9'56.74"N	1°38'20.28"E
97	406864.4988	5780369.8155	52.1659	1.6383	52°9.9569'N	1°38.2960'E	52°9'57.41"N	1°38'17.76"E
98	406125.9139	5780670.8658	52.1685	1.6274	52°10.1117'N	1°37.6433'E	52°10'6.70"N	1°37'38.60"E
99	405729.6012	5781419.031	52.175185	1.621387	52°10.5111'N	1°37.2832'E	52°10'30.67"N	1°37'16.99"E
100	405549.6466	5781758.753	52.178208	1.618662	52°10.6925'N	1°37.1197'E	52°10'41.55"N	1°37'7.18"E
101	405501.3943	5781849.845	52.179018	1.617931	52°10.7411'N	1°37.0759'E	52°10'44.46"N	1°37'4.55"E
102	405755.8557	5782358.968	52.183638	1.62151	52°11.0183'N	1°37.2906'E	52°11'1.10"N	1°37'17.44"E
103	405759.6123	5782366.485	52.183706	1.621562	52°11.0224'N	1°37.2937'E	52°11'1.34"N	1°37'17.62"E
104	405762.0824	5782371.427	52.183751	1.621597	52°11.0251'N	1°37.2958'E	52°11'1.50"N	1°37'17.75"E
105	405743.2335	5782382.052	52.183843	1.621319	52°11.0306'N	1°37.2791'E	52°11'1.83"N	1°37'16.75"E
106	405743.2234	5782382.058	52.183843	1.621319	52°11.0306'N	1°37.2791'E	52°11'1.83"N	1°37'16.75"E
107	405743.0414	5782382.241	52.183845	1.621316	52°11.0307'N	1°37.2790'E	52°11'1.84"N	1°37'16.74"E
108	405742.002	5782383.284	52.183854	1.6213	52°11.0312'N	1°37.2780'E	52°11'1.87"N	1°37'16.68"E
109	405741.967	5782383.319	52.183855	1.6213	52°11.0313'N	1°37.2780'E	52°11'1.88"N	1°37'16.68"E
110	405736.2072	5782389.097	52.183905	1.621214	52°11.0343'N	1°37.2728'E	52°11'2.06"N	1°37'16.37"E
111	405734.3689	5782390.942	52.183922	1.621187	52°11.0353'N	1°37.2712'E	52°11'2.12"N	1°37'16.27"E
112	405726.1991	5782399.139	52.183994	1.621065	52°11.0396'N	1°37.2639'E	52°11'2.38"N	1°37'15.83"E



Ref ID	WGS 84/UTM Zone 31N		World Geodetic System (WGS 84)					
			Decimal Degrees		Degrees Decimal Minutes		Degree Minutes Seconds	
	Eastings (m)	Northings (m)	Lat (DD)	Long (DD)	Lat (DDM)	Long (DDM)	Lat (DMS)	Long (DMS)
113	405726.7851	5782400.663	52.184008	1.621073	52°11.0405'N	1°37.2644'E	52°11'2.43"N	1°37'15.86"E
114	405727.4951	5782402.511	52.184025	1.621083	52°11.0415'N	1°37.2650'E	52°11'2.49"N	1°37'15.90"E
115	405728.2016	5782404.35	52.184041	1.621093	52°11.0425'N	1°37.2656'E	52°11'2.55"N	1°37'15.93"E
116	405733.9337	5782419.268	52.184176	1.621172	52°11.0506'N	1°37.2703'E	52°11'3.03"N	1°37'16.22"E
117	405742.6232	5782442.108	52.184383	1.621293	52°11.0630'N	1°37.2776'E	52°11'3.78"N	1°37'16.65"E
118	405753.5788	5782470.202	52.184637	1.621445	52°11.0782'N	1°37.2867'E	52°11'4.69"N	1°37'17.20"E
119	405755.4531	5782475.091	52.184682	1.621471	52°11.0809'N	1°37.2883'E	52°11'4.86"N	1°37'17.30"E
120	405767.385	5782506.213	52.184963	1.621637	52°11.0978'N	1°37.2982'E	52°11'5.87"N	1°37'17.89"E
121	405789.1344	5782561.509	52.185464	1.62194	52°11.1278'N	1°37.3164'E	52°11'7.67"N	1°37'18.98"E
122	405791.8615	5782570.537	52.185546	1.621977	52°11.1328'N	1°37.3186'E	52°11'7.97"N	1°37'19.12"E
123	405794.1877	5782577.953	52.185613	1.622009	52°11.1368'N	1°37.3205'E	52°11'8.21"N	1°37'19.23"E
124	405795.3109	5782581.534	52.185645	1.622025	52°11.1387'N	1°37.3215'E	52°11'8.32"N	1°37'19.29"E
125	405800.5962	5782598.383	52.185798	1.622097	52°11.1479'N	1°37.3258'E	52°11'8.87"N	1°37'19.55"E
126	405803.784	5782608.281	52.185887	1.622141	52°11.1532'N	1°37.3285'E	52°11'9.19"N	1°37'19.71"E
127	405807.058	5782620.877	52.186001	1.622186	52°11.1601'N	1°37.3312'E	52°11'9.60"N	1°37'19.87"E
128	405812.1926	5782641.559	52.186188	1.622255	52°11.1713'N	1°37.3353'E	52°11'10.28"N	1°37'20.12"E
129	405814.9609	5782651.185	52.186275	1.622293	52°11.1765'N	1°37.3376'E	52°11'10.59"N	1°37'20.25"E
130	405817.3718	5782661.436	52.186367	1.622325	52°11.1820'N	1°37.3395'E	52°11'10.92"N	1°37'20.37"E
131	405821.0003	5782677.714	52.186514	1.622374	52°11.1908'N	1°37.3424'E	52°11'11.45"N	1°37'20.55"E
132	405823.0845	5782687.588	52.186603	1.622401	52°11.1962'N	1°37.3441'E	52°11'11.77"N	1°37'20.64"E
133	405825.4302	5782698.345	52.1867	1.622433	52°11.2020'N	1°37.3460'E	52°11'12.12"N	1°37'20.76"E
134	405827.6521	5782710.212	52.186807	1.622462	52°11.2084'N	1°37.3477'E	52°11'12.51"N	1°37'20.86"E
135	405830.944	5782730.32	52.186989	1.622504	52°11.2193'N	1°37.3502'E	52°11'13.16"N	1°37'21.01"E
136	405834.6901	5782754.103	52.187203	1.622553	52°11.2322'N	1°37.3532'E	52°11'13.93"N	1°37'21.19"E
137	405838.3783	5782784.302	52.187475	1.622598	52°11.2485'N	1°37.3559'E	52°11'14.91"N	1°37'21.35"E
138	405840.0237	5782797.659	52.187595	1.622619	52°11.2557'N	1°37.3571'E	52°11'15.34"N	1°37'21.43"E



Ref ID	WGS 84/UTM Zone 31N		World Geodetic System (WGS 84)					
			Decimal Degrees		Degrees Decimal Minutes		Degree Minutes Seconds	
	Eastings (m)	Northings (m)	Lat (DD)	Long (DD)	Lat (DDM)	Long (DDM)	Lat (DMS)	Long (DMS)
139	405840.4611	5782801.209	52.187627	1.622624	52°11.2576'N	1°37.3574'E	52°11'15.46"N	1°37'21.45"E
140	405842.7099	5782819.464	52.187792	1.622652	52°11.2675'N	1°37.3591'E	52°11'16.05"N	1°37'21.55"E
141	405842.6865	5782826.378	52.187854	1.622649	52°11.2712'N	1°37.3589'E	52°11'16.27"N	1°37'21.54"E
142	405844.4354	5782851.701	52.188082	1.622668	52°11.2849'N	1°37.3601'E	52°11'17.10"N	1°37'21.60"E
143	405846.0981	5782874.326	52.188286	1.622686	52°11.2972'N	1°37.3612'E	52°11'17.83"N	1°37'21.67"E
144	405846.9931	5782887.287	52.188402	1.622696	52°11.3041'N	1°37.3618'E	52°11'18.25"N	1°37'21.71"E
145	405847.9499	5782898.24	52.188501	1.622706	52°11.3101'N	1°37.3624'E	52°11'18.60"N	1°37'21.74"E
146	405851.1601	5782925.867	52.18875	1.622746	52°11.3250'N	1°37.3648'E	52°11'19.50"N	1°37'21.89"E
147	405853.056	5782943.166	52.188905	1.622769	52°11.3343'N	1°37.3661'E	52°11'20.06"N	1°37'21.97"E
148	405856.2282	5782968.792	52.189136	1.622808	52°11.3482'N	1°37.3685'E	52°11'20.89"N	1°37'22.11"E
149	405858.9468	5782996.553	52.189386	1.62284	52°11.3632'N	1°37.3704'E	52°11'21.79"N	1°37'22.22"E
150	405859.2569	5783003.944	52.189453	1.622842	52°11.3672'N	1°37.3705'E	52°11'22.03"N	1°37'22.23"E
151	405858.5156	5783016.417	52.189565	1.622828	52°11.3739'N	1°37.3697'E	52°11'22.43"N	1°37'22.18"E
152	405858.4294	5783018.83	52.189586	1.622826	52°11.3752'N	1°37.3696'E	52°11'22.51"N	1°37'22.17"E
153	405857.6619	5783040.318	52.189779	1.622809	52°11.3867'N	1°37.3685'E	52°11'23.20"N	1°37'22.11"E
154	405855.5767	5783073.8	52.19008	1.622769	52°11.4048'N	1°37.3661'E	52°11'24.29"N	1°37'21.97"E
155	405853.4473	5783112.153	52.190424	1.622727	52°11.4254'N	1°37.3636'E	52°11'25.53"N	1°37'21.82"E
156	405851.4786	5783159.071	52.190846	1.622686	52°11.4508'N	1°37.3612'E	52°11'27.05"N	1°37'21.67"E
157	405850.7274	5783175.752	52.190996	1.62267	52°11.4598'N	1°37.3602'E	52°11'27.59"N	1°37'21.61"E
158	405850.7067	5783181.671	52.191049	1.622668	52°11.4629'N	1°37.3601'E	52°11'27.78"N	1°37'21.60"E
159	405850.684	5783188.176	52.191107	1.622666	52°11.4664'N	1°37.3600'E	52°11'27.99"N	1°37'21.60"E
160	405850.0561	5783200.842	52.191221	1.622653	52°11.4733'N	1°37.3592'E	52°11'28.40"N	1°37'21.55"E
161	405849.9273	5783219.283	52.191387	1.622646	52°11.4832'N	1°37.3588'E	52°11'28.99"N	1°37'21.53"E
162	405848.8543	5783239.862	52.191571	1.622625	52°11.4943'N	1°37.3575'E	52°11'29.66"N	1°37'21.45"E
163	405848.852	5783240.844	52.19158	1.622625	52°11.4948'N	1°37.3575'E	52°11'29.69"N	1°37'21.45"E
164	405848.8334	5783269.314	52.191836	1.622616	52°11.5102'N	1°37.3570'E	52°11'30.61"N	1°37'21.42"E



Ref ID	WGS 84/UTM Zone 31N		World Geodetic System (WGS 84)					
			Decimal Degrees		Degrees Decimal Minutes		Degree Minutes Seconds	
	Eastings (m)	Northings (m)	Lat (DD)	Long (DD)	Lat (DDM)	Long (DDM)	Lat (DMS)	Long (DMS)
165	405848.8325	5783270.783	52.191849	1.622616	52°11.5109'N	1°37.3570'E	52°11'30.66"N	1°37'21.42"E
166	405848.8321	5783271.397	52.191855	1.622616	52°11.5113'N	1°37.3570'E	52°11'30.68"N	1°37'21.42"E
167	405866.7777	5783276.79	52.191906	1.622877	52°11.5144'N	1°37.3726'E	52°11'30.86"N	1°37'22.36"E
168	405866.9116	5783276.83	52.191907	1.622879	52°11.5144'N	1°37.3727'E	52°11'30.87"N	1°37'22.36"E
169	405908.3387	5783286.708	52.192003	1.623482	52°11.5202'N	1°37.4089'E	52°11'31.21"N	1°37'24.54"E

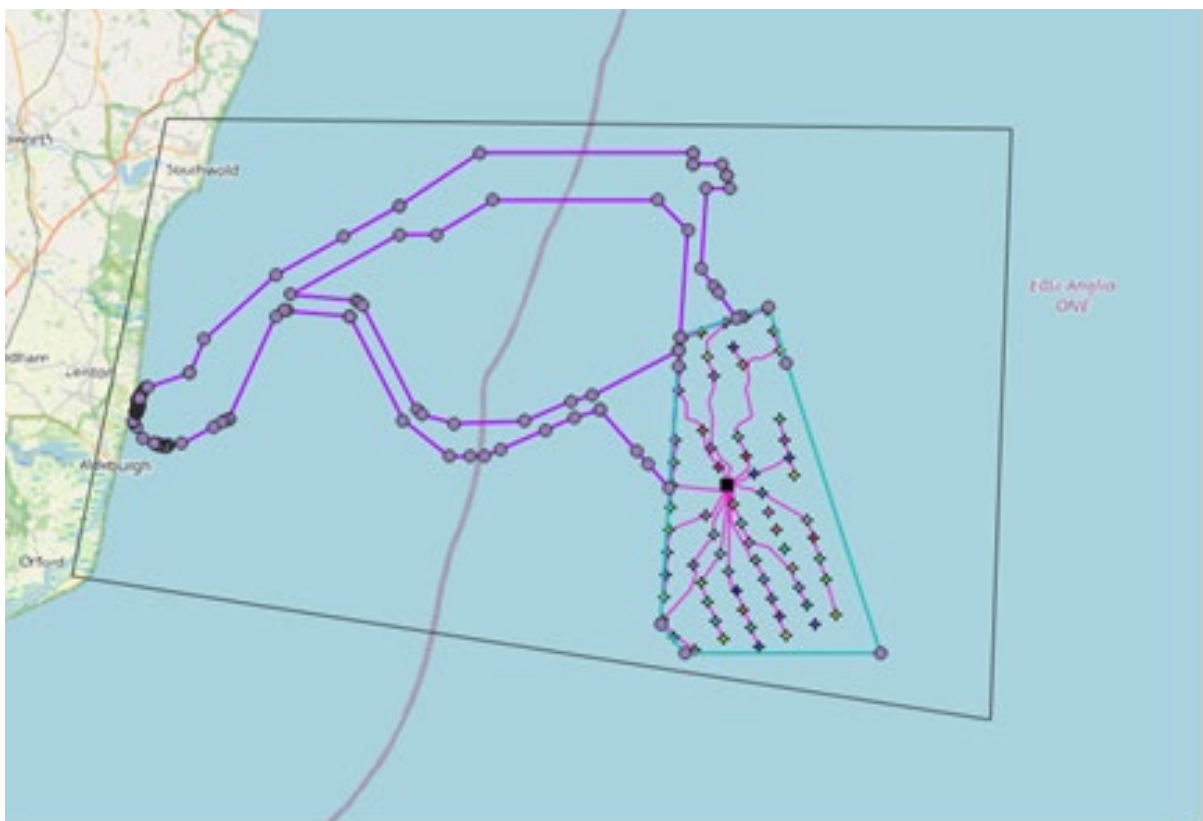


Figure 2: East Anglia Two Field Area



## 2.2 Vessel Activities

The Northern Victoria will be engaged in disposal and relocation operations for this phase up until mid **June 2026**.

### 2.2.1 Remote Operated Vehicle (ROV) Activities

ROV activities will be undertaken by a work class ROV onboard the Northern Victoria operating 24hrs per day. The WROV will be strictly used in support of the EOD scope, Survey, Investigation, and Intervention activities for the project. It will be deployed via a dedicated Launch and Recovery System. The ROV uses an in-line Tether Management System to assist in controlling its umbilical subsea.

During ROV operations the vessel will be in Dynamic Position (DP) Mode.

### 2.2.2 Diver Activities

Currently there is no scope for diving operations to take place but this may be reconsidered in the coming weeks depending on subsea visibility. If/when diving activities are to be carried out an updated notice to mariners will be issued.



### 2.2.3 Subsea Intervention

It is anticipated that there will be some seabed intervention during the investigation activities during this project. This will be limited to: -

- Dredging

Dredging will be carried out using an ROV mounted dredging tool. The dredge system is a suction dredge unit with an outlet diameter of 150mm and an approximate flow/removal rate of 43m<sup>3</sup>/hr. There is no additional jetting element. The unit is suction only and single outlet.

Dredging will be down to maximum of 3m based on target requirements.

- Debris Relocation

Certain items identified, depending on classification, may be relocated to either a designated wet store area or just cleared from the area in question. Items will be relocated using ROV manipulator or grab

- Low Order Deflagration

LOD techniques will be used to dispose of cUXO's for this scope. Charge sizes will vary depending of size and type of UXO, maximum of 250g charge will be used. Once UXO has successfully been deflagrated the debris will be recovered to deck using onboard orange peel grab.

During EOD disposals, securite broadcasts will be made by the on-shift EOD supervisor/superintendent each morning that a disposal will be conducted. There will be further securite broadcasts made during the countdown period to all vessels in the area. Other vessels are required to stay a minimum distance of 1 nautical mile from Northern Victoria when carrying out disposals.



## 4 Contacts

The contents of this notice are based on the current schedule of operations for the vessels, and is limited to EOD disposals, investigation, survey, debris relocations and intervention activities within the designated areas. HSS will endeavour to update the contents of this notice as the project develops, and the vessel's scope increases.

Enquiries regarding the contents of this notice, or associated matters, should be directed in the first instance to HSSL (OEG)

For any matters relating to fisheries, or fishing activities, please contact the Fisheries Liaison Officer – Brown and May Marine Limited., using provided contact details.

### HSSL (OEG) Contact Details

#### Issuing Office Address

OEG, Units 3-5, Unity Grove, Knowsley Business Park, Prescot, Knowsley, L34 9GT

#### Key Personnel

- **OEG Project Manager**  
Email: [max.clements@oeg.group](mailto:max.clements@oeg.group)
- **OEG Northern Victoria Offshore Manager**  
Email: [northernvictoria.om@project.oeg.group](mailto:northernvictoria.om@project.oeg.group)

### SPR (Client) Contact Details

#### Client Address

Scottish Power Renewables, 3<sup>rd</sup> Floor, 1 Tudor Street, London, EC4Y 0AH

#### Key Personnel

- **SPR Package Manager**  
Email: [gkent@scottishpower.com](mailto:gkent@scottishpower.com)

### Fisheries Contact Details

Brown and May Marine Limited Fisheries Liaison Officer

#### Key Personnel

- **FLO's**  
Email: [jonathan@brownmay.com](mailto:jonathan@brownmay.com)  
Email: [molly.jones@brownmay.com](mailto:molly.jones@brownmay.com)



## 5 Vessel Particulars

The EA2 disposal scope will be conducted by the following vessel(s):

Planned disposal and relocation operations are now due to complete in **Jun 2026**.

### 5.1 Northern Victoria mobilising 05/04/26

<b>Name</b>	Northern Victoria	<b>Call Sign</b>	OXGF2
		<b>IMO Number</b>	9258533
<b>Image</b>			
<b>Classification</b>	Offshore Supply Vessel,		
<b>Vessel Type</b>	S-Class CLV / ROV Support (DPII)		
<b>Owner</b>	Northern Survey		
<b>Flag</b>	Denmark		
<b>LOA</b>	75m		
<b>Beam</b>	16m		
<b>Draft</b>	5.75m		
<b>Gross Tonnage</b>	2786Te		
<b>Total POB</b>	49 max		
<b>Communication</b>	Bridge:	+881641708530	
	Bridge (m):	+4560208699	
	Email:	<a href="mailto:victoria@northern-survey.com">victoria@northern-survey.com</a>	



## 6 Distribution List

Distribution List External	
The Crown Estate	<a href="mailto:consents@thecrownestate.co.uk">consents@thecrownestate.co.uk</a>
Marine Management Organisation	<a href="mailto:marine.consents@marinemanagement.org.uk">marine.consents@marinemanagement.org.uk</a>
Marine Management Organisation	<a href="mailto:info@marinemanagement.gov.uk">info@marinemanagement.gov.uk</a>
Kingfisher	<a href="mailto:kingfisher@seafish.co.uk">kingfisher@seafish.co.uk</a>
Local Marine Management Organisation Office	<a href="mailto:lowestoft@marinemanagement.org.uk">lowestoft@marinemanagement.org.uk</a>
Inshore Fisheries and Conservation Authority	<a href="mailto:mail@eastern-ifca.gov.uk">mail@eastern-ifca.gov.uk</a>
Trinity House	<a href="mailto:navigation.directorate@thls.org">navigation.directorate@thls.org</a>
Trinity House	<a href="mailto:navigation@trinityhouse.co.uk">navigation@trinityhouse.co.uk</a>
Maritime and Coastguard Agency	<a href="mailto:navigationsafety@mcga.gov.uk">navigationsafety@mcga.gov.uk</a>
United Kingdom Hydrographic Office	<a href="mailto:navwarnings@ukho.gov.uk">navwarnings@ukho.gov.uk</a>
United Kingdom Hydrographic Office	<a href="mailto:sdr@ukho.gov.uk">sdr@ukho.gov.uk</a>
United Kingdom Hydrographic Office	<a href="mailto:offshore.energy@ukho.gov.uk">offshore.energy@ukho.gov.uk</a>
National Federation of Fishermen's Organisations	<a href="mailto:nffo@nffo.org.uk">nffo@nffo.org.uk</a>
National Coastguard	<a href="mailto:nmoccontroller@hmcg.gov.uk">nmoccontroller@hmcg.gov.uk</a>
Centre for Environment, Fisheries and Aquaculture Science	<a href="mailto:renewables@cefas.co.uk">renewables@cefas.co.uk</a>
Local Coastguard	<a href="mailto:zone9@hmcg.gov.uk">zone9@hmcg.gov.uk</a>
Local Coastguard	<a href="mailto:zone10@hmcg.gov.uk">zone10@hmcg.gov.uk</a>



Distribution List Internal	
ScottishPower Renewables	<a href="mailto:ea3_mcc@scottishpower.com">ea3_mcc@scottishpower.com</a>
ScottishPower Renewables	<a href="mailto:gkent@scottishpower.com">gkent@scottishpower.com</a>
ScottishPower Renewables	<a href="mailto:rstocks@scottishpower.com">rstocks@scottishpower.com</a>
ScottishPower Renewables - Fisheries	<a href="mailto:Molly.Jones@brownmay.com">Molly.Jones@brownmay.com</a>
ScottishPower Renewables - Fisheries	<a href="mailto:jonathan@brownmay.com">jonathan@brownmay.com</a>
ScottishPower Renewables – Onboard Client	<a href="mailto:ttrpsnorthernvictoria@gmail.com">ttrpsnorthernvictoria@gmail.com</a>
Hughes Subsea – Onshore Project Manager	<a href="mailto:Max.clements@oeg.group">Max.clements@oeg.group</a>
Hughes Subsea – Offshore Project Managers	<a href="mailto:glomarworker.om@project.oeg.group">glomarworker.om@project.oeg.group</a>
Hughes Subsea – Asst. Project Manager	<a href="mailto:david.roberts@oeg.group">david.roberts@oeg.group</a>
Hughes Subsea – HSEQ Coordinator	<a href="mailto:scott.farman@oeg.group">scott.farman@oeg.group</a>



**END OF DOCUMENT**