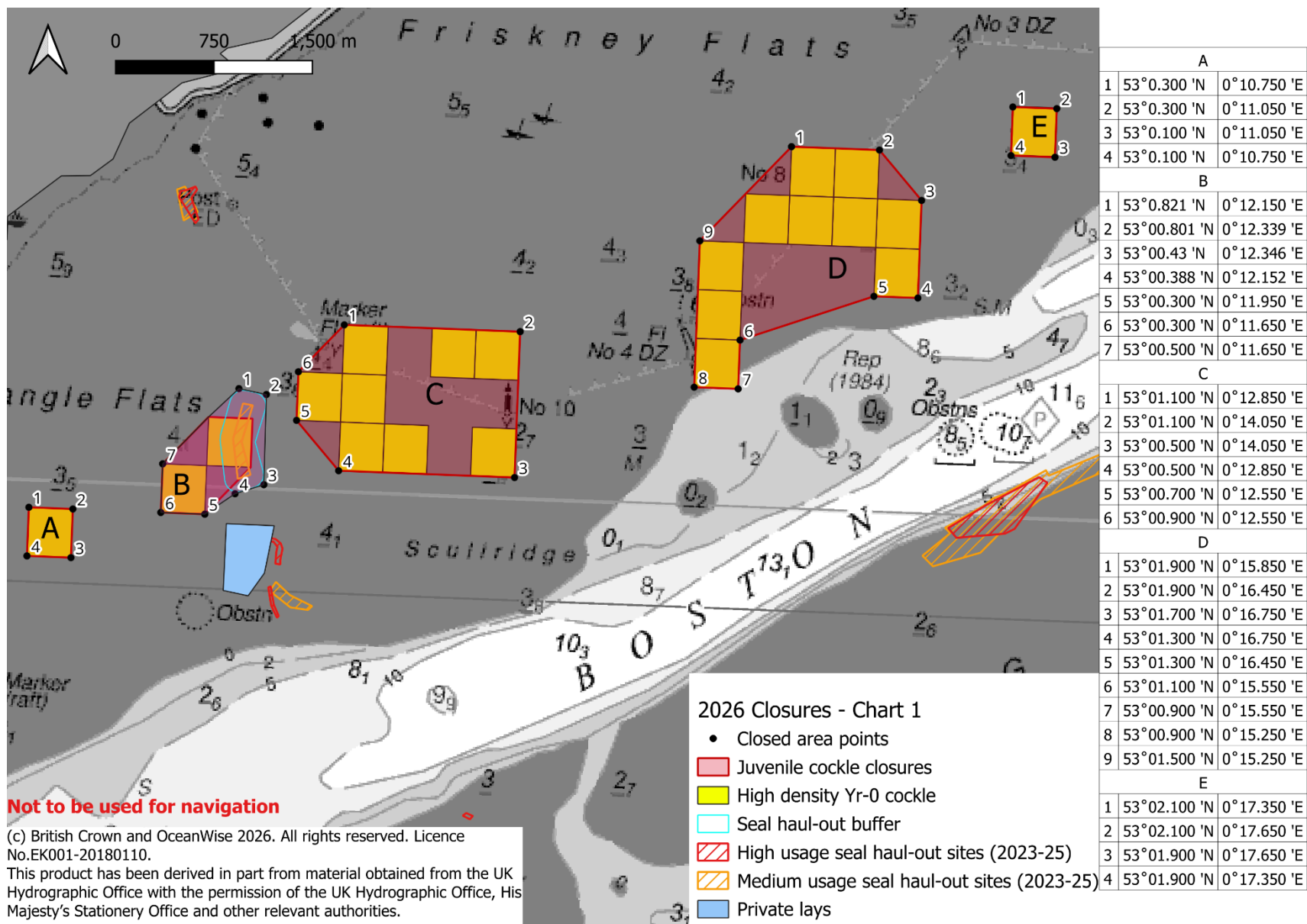


# Wash Cockle Fishery 2026: High-density Year-0 and Seal Haul-Out Closures



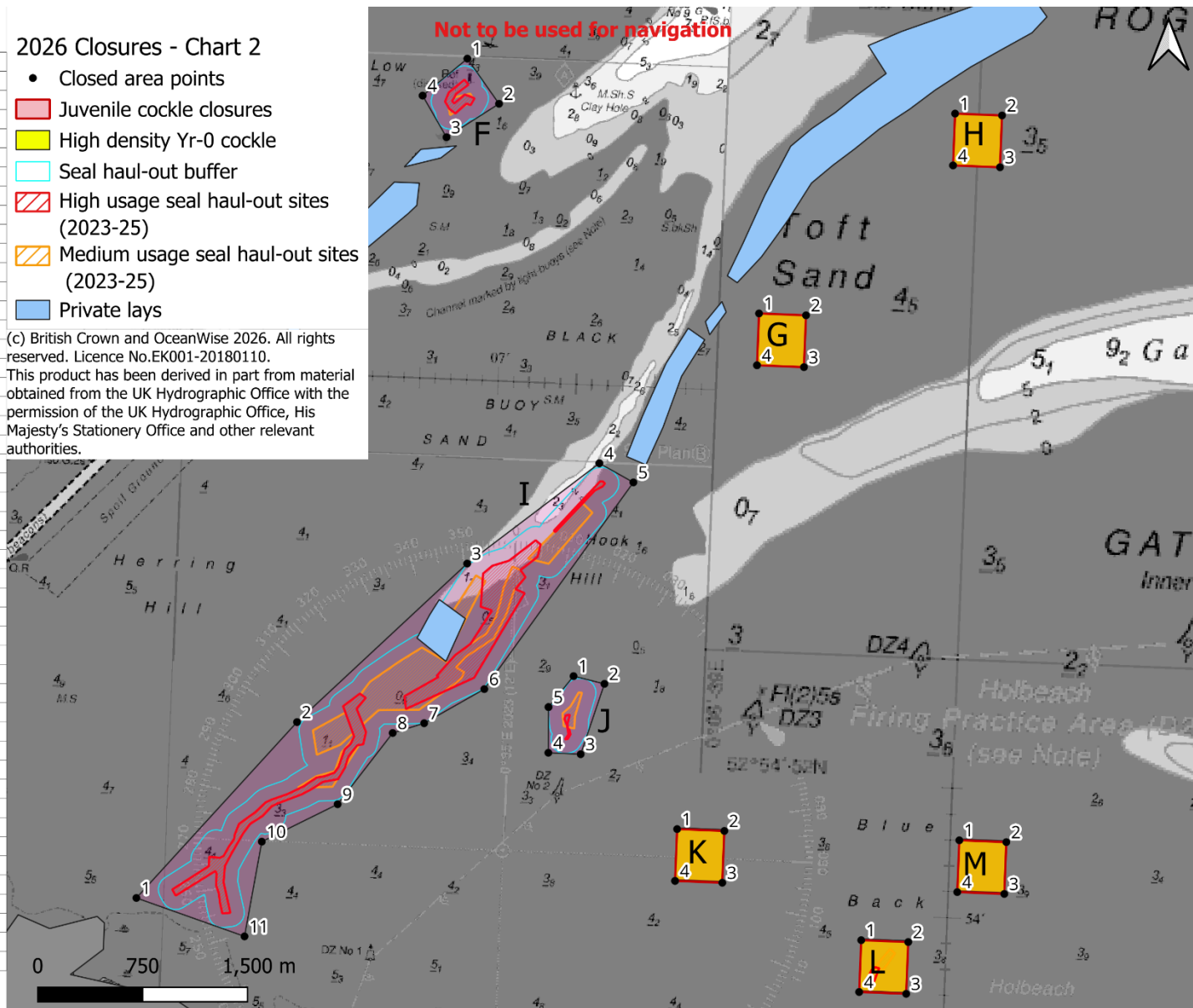
# Wash Cockle Fishery 2026: High-density Year-0 and Seal Haul-Out Closures

F	
1	52°57.237' N 0°06.724' E
2	52°57.068' N 0°06.938' E
3	52°56.931' N 0°06.611' E
4	52°57.087' N 0°06.448' E
G	
1	52°56.300' N 0°08.65' E
2	52°56.300' N 0°08.950' E
3	52°56.100' N 0°08.950' E
4	52°56.100' N 0°08.650' E
H	
1	52°57.100' N 0°09.850' E
2	52°57.100' N 0°10.150' E
3	52°56.900' N 0°10.150' E
4	52°56.900' N 0°09.850' E
I	
1	52°53.951' N 0°04.830' E
2	52°54.653' N 0°05.808' E
3	52°55.291' N 0°06.852' E
4	52°55.698' N 0°07.670' E
5	52°55.629' N 0°07.891' E
6	52°54.810' N 0°06.994' E
7	52°54.669' N 0°06.619' E
8	52°54.626' N 0°06.421' E
9	52°54.343' N 0°06.089' E
10	52°54.187' N 0°05.615' E
11	52°53.820' N 0°05.529' E
J	
1	52°54.874' N 0°07.559' E
2	52°54.848' N 0°07.758' E
3	52°54.574' N 0°07.625' E
4	52°54.574' N 0°07.418' E
5	52°54.750' N 0°07.408' E
K	
1	52°54.300' N 0°08.260' E
2	52°54.300' N 0°08.560' E
3	52°54.100' N 0°08.560' E
4	52°54.100' N 0°08.260' E
L	
1	52°53.900' N 0°09.460' E
2	52°53.900' N 0°09.760' E
3	52°53.700' N 0°09.760' E
4	52°53.700' N 0°09.460' E
M	
1	52°54.300' N 0°10.060' E
2	52°54.300' N 0°10.360' E
3	52°54.100' N 0°10.360' E
4	52°54.100' N 0°10.060' E

## 2026 Closures - Chart 2

- Closed area points
- Juvenile cockle closures
- High density Yr-0 cockle
- Seal haul-out buffer
- ▨ High usage seal haul-out sites (2023-25)
- ▨ Medium usage seal haul-out sites (2023-25)
- Private lays

(c) British Crown and OceanWise 2026. All rights reserved. Licence No.EK001-20180110. This product has been derived in part from material obtained from the UK Hydrographic Office with the permission of the UK Hydrographic Office, His Majesty's Stationery Office and other relevant authorities.



# Wash Cockle Fishery 2026: High-density Year-0 and Seal Haul-Out Closures

