

Wash Cockle and Mussel Byelaw 2021: Hand-Work cockle Fishery Permit Conditions

2026 Wash Cockle Fishery



Persons operating under the Authority of a **Hand-work Cockle Permit** for the purpose of fishing within the **cockle** fishery, issued under paragraph 8 of the Wash Cockle and Mussel Byelaw 2021 must fish in accordance with the following conditions.

These Permit Conditions apply should be read in conjunction with the Wash cockle and mussel byelaw including the restrictions set out in Schedule 2 of the byelaw which also apply. These restrictions are appended to the permit conditions for ease of reference.

Interpretation

1. In these permit conditions:
 - a. "UK VMS Hub" means the UK's secure interface platform which is maintained by the Marine Management Organisation and the fisheries policy authorities to collect, store and manage fishing boat monitoring data for use by the MMO and fisheries policy authorities.

Opening of the fishery

2. The fishery will open from 0500hrs on 15 June 2026.
3. It is prohibited to fish for, take or remove from the fishery any cockles prior to the open date and time in paragraph 2.

Open / closed areas

4. It is prohibited to fish for, take or remove from the fishery and cockles from any area specified as closed to the fishery in Schedule 1 of these permit conditions.
5. Areas designated as open or closed may be subject to change and Eastern IFCA will provide a minimum of 12 hours' notice of such via text or e-mail to Permit Holders and Nominated Deputies.

Operating times

6. It is prohibited to fish for, take or remove from the fishery any cockles outside of the Operating times specified in Schedule 2 of these permit conditions.

Fishing methods

7. It is prohibited to fish for, take or remove from the fishery any cockles using bottom-towed-gear.

Vessel Monitoring Devices

8. Subject to condition 10, vessels with an overall length of less than 12m must at all times whilst at sea:
 - a. Have a Nemo I-VMS MMO type-approved I-VMS device installed onboard and operations;
 - b. Have the I-VMS unit switched on and transmitting data to the device supplier hub for onward transmission to the UK VMS Hub at least once in every 3 minutes; and
 - c. Ensure that the device has not been manually overridden, has not been tampered with or damaged and is not obstructed or interfered with so as to compromise or prevent the effective transmission of data to the UK VMS Hub.

9. Subject to condition 10, vessels with an overall length of 12m or more must at all times whilst at sea:
 - a. Have onboard a VMS or VMS+ unit;
 - b. Have the VMS or VMS+ unit switched on and transmitting data to the device supplier hub for onward transmission to the UK VMS Hub at least once in every 3 minutes; and
 - c. Ensure that the device has not been manually overridden, has not been tampered with or damaged and is not obstructed or interfered with so as to compromise or prevent the effective transmission of data to the UK VMS Hub.

10. Where a vessel is not able to meet condition 8(b) or 9(b), condition 8 or 9 shall not apply if;
 - a. the vessel has onboard a tracker provided by the Authority; and
 - b. the permit holder or nominated deputy remunerate the Authority for the associated subscription cost.


Measures for the protection of small cockles

11. A person must not remove from the fishery or retain cockles unless cockle catch has been sorted for size in such a manner so as to comply with permit condition 12 and any catch rejected through such sorting must be returned immediately to the sea as close to the area it was taken from and spread evenly and thinly over the cockle bed.

12. It is prohibited to remove from the fishery or land cockle catch which contains more than 30%, by weight, cockles which would pass through a riddle with bar spacing of 10mm.

Confirmation

The Permit Conditions come into effect at 0500hrs on 15 June 2026.

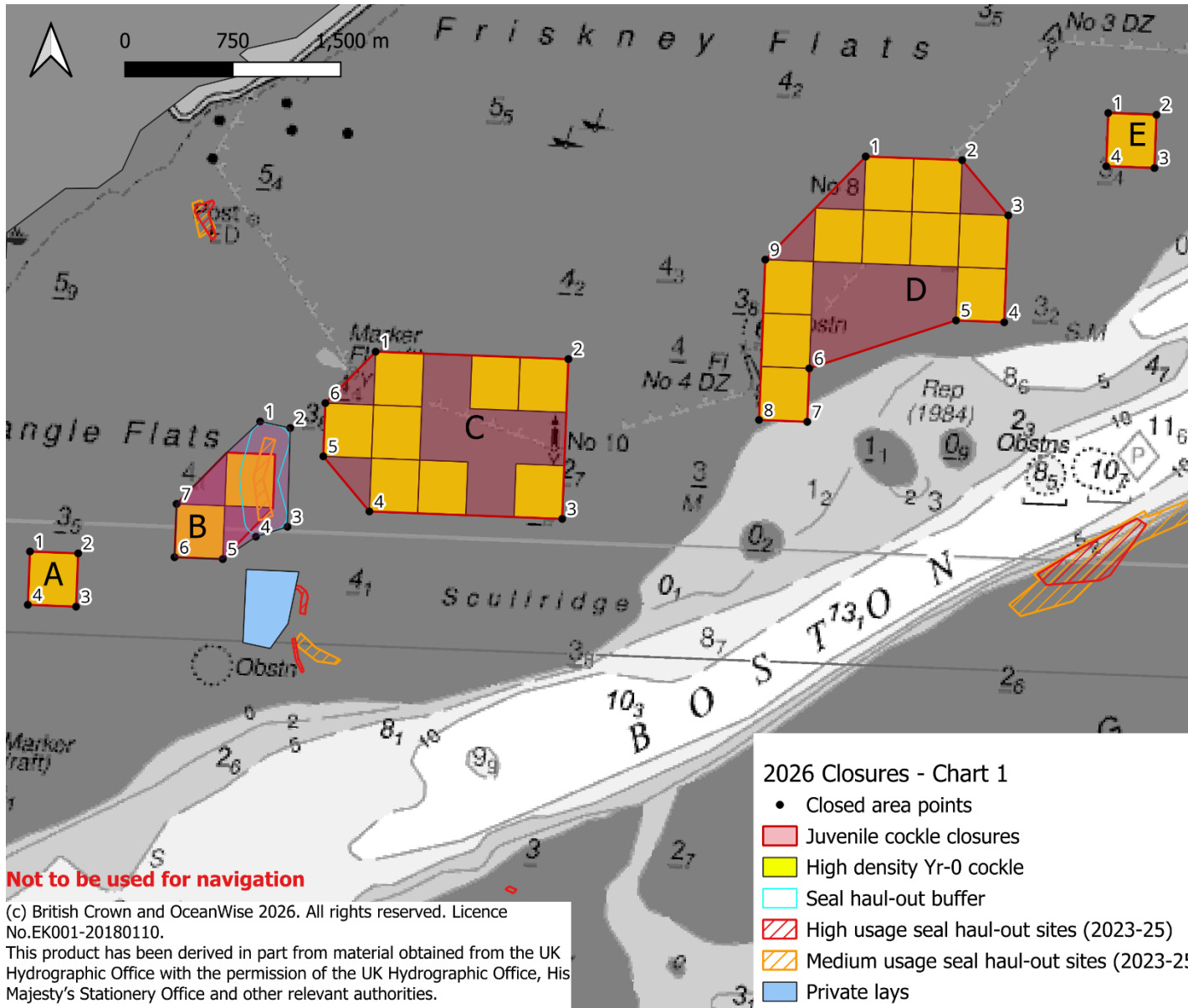
Signed: 

J. Gregory, CEO

Failure to comply with an exemption condition is an offence under section 163(2) of the Marine and Coastal Access Act 2009. The master, owner and charterer (if any) of a vessel used in the commission of an offence shall each be guilty of any such offence and liable to a fine on summary conviction.

Permit conditions are subject to change and fishers will be notified of any amendments to the conditions.

Schedule 1 Closed Areas



A		
1	53°0.300 'N	0°10.750 'E
2	53°0.300 'N	0°11.050 'E
3	53°0.100 'N	0°11.050 'E
4	53°0.100 'N	0°10.750 'E
B		
1	53°00.821 'N	0°12.150 'E
2	53°00.801 'N	0°12.339 'E
3	53°00.43 'N	0°12.346 'E
4	53°00.388 'N	0°12.152 'E
5	53°00.300 'N	0°11.950 'E
6	53°00.300 'N	0°11.650 'E
7	53°00.500 'N	0°11.650 'E
C		
1	53°01.100 'N	0°12.850 'E
2	53°01.100 'N	0°14.050 'E
3	53°00.500 'N	0°14.050 'E
4	53°00.500 'N	0°12.850 'E
5	53°00.700 'N	0°12.550 'E
6	53°00.900 'N	0°12.550 'E
D		
1	53°01.900 'N	0°15.850 'E
2	53°01.900 'N	0°16.450 'E
3	53°01.700 'N	0°16.750 'E
4	53°01.300 'N	0°16.750 'E
5	53°01.300 'N	0°16.450 'E
6	53°01.100 'N	0°15.550 'E
7	53°00.900 'N	0°15.550 'E
8	53°00.900 'N	0°15.250 'E
9	53°01.500 'N	0°15.250 'E
E		
1	53°02.100 'N	0°17.350 'E
2	53°02.100 'N	0°17.650 'E
3	53°01.900 'N	0°17.650 'E
4	53°01.900 'N	0°17.350 'E

Not to be used for navigation

(c) British Crown and OceanWise 2026. All rights reserved. Licence No.EK001-20180110.
 This product has been derived in part from material obtained from the UK Hydrographic Office with the permission of the UK Hydrographic Office, His Majesty's Stationery Office and other relevant authorities.

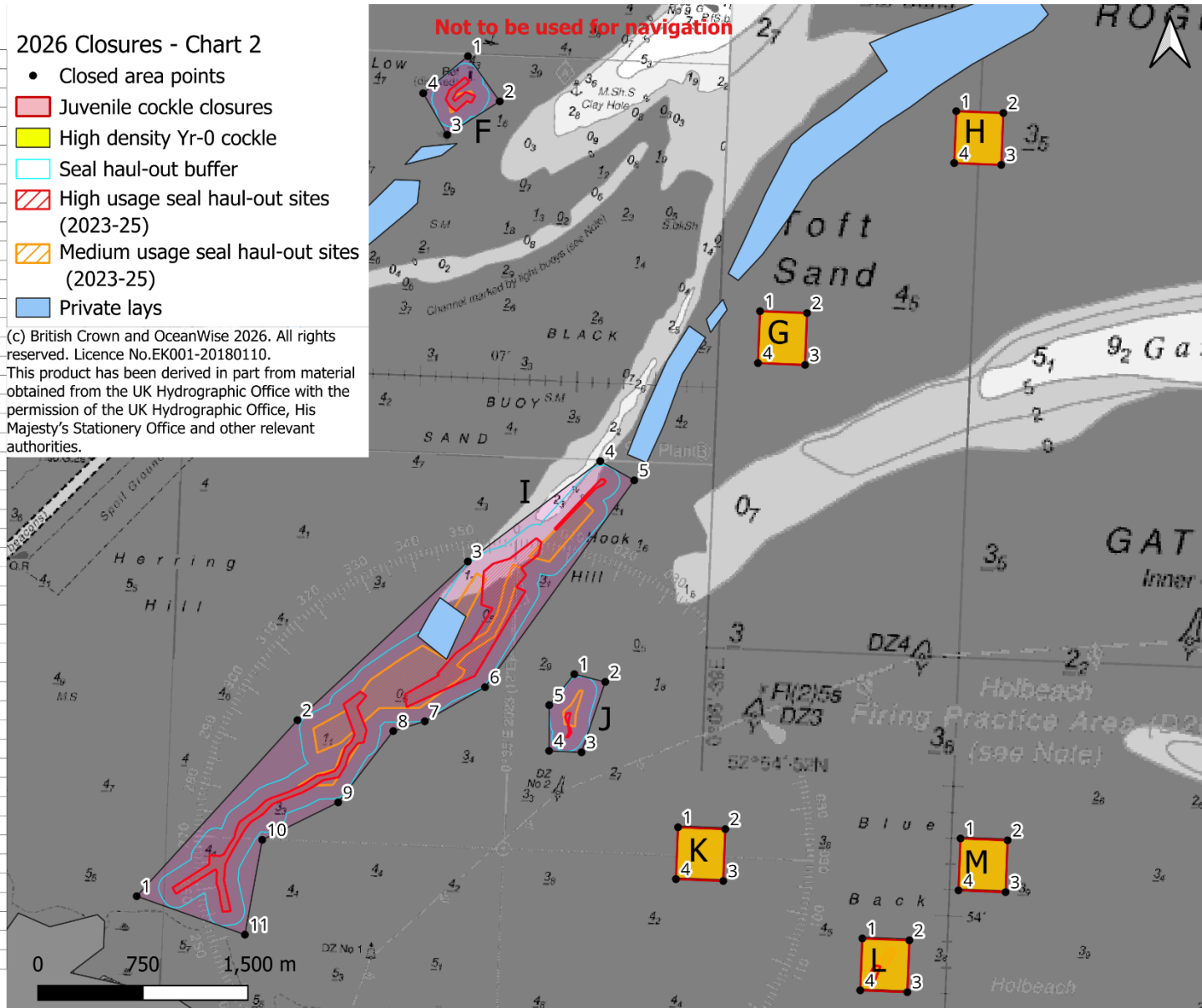
Schedule 1 Closed Areas

F		
1	52°57.237' N	0°06.724' E
2	52°57.068' N	0°06.938' E
3	52°56.931' N	0°06.611' E
4	52°57.087' N	0°06.448' E
G		
1	52°56.300' N	0°08.65' E
2	52°56.300' N	0°08.950' E
3	52°56.100' N	0°08.950' E
4	52°56.100' N	0°08.650' E
H		
1	52°57.100' N	0°09.850' E
2	52°57.100' N	0°10.150' E
3	52°56.900' N	0°10.150' E
4	52°56.900' N	0°09.850' E
I		
1	52°53.951' N	0°04.830' E
2	52°54.653' N	0°05.808' E
3	52°55.291' N	0°06.852' E
4	52°55.698' N	0°07.670' E
5	52°55.629' N	0°07.891' E
6	52°54.810' N	0°06.994' E
7	52°54.669' N	0°06.619' E
8	52°54.626' N	0°06.421' E
9	52°54.343' N	0°06.089' E
10	52°54.187' N	0°05.615' E
11	52°53.820' N	0°05.529' E
J		
1	52°54.874' N	0°07.559' E
2	52°54.848' N	0°07.758' E
3	52°54.574' N	0°07.625' E
4	52°54.574' N	0°07.418' E
5	52°54.750' N	0°07.408' E
K		
1	52°54.300' N	0°08.260' E
2	52°54.300' N	0°08.560' E
3	52°54.100' N	0°08.560' E
4	52°54.100' N	0°08.260' E
L		
1	52°53.900' N	0°09.460' E
2	52°53.900' N	0°09.760' E
3	52°53.700' N	0°09.760' E
4	52°53.700' N	0°09.460' E
M		
1	52°54.300' N	0°10.060' E
2	52°54.300' N	0°10.360' E
3	52°54.100' N	0°10.360' E
4	52°54.100' N	0°10.060' E

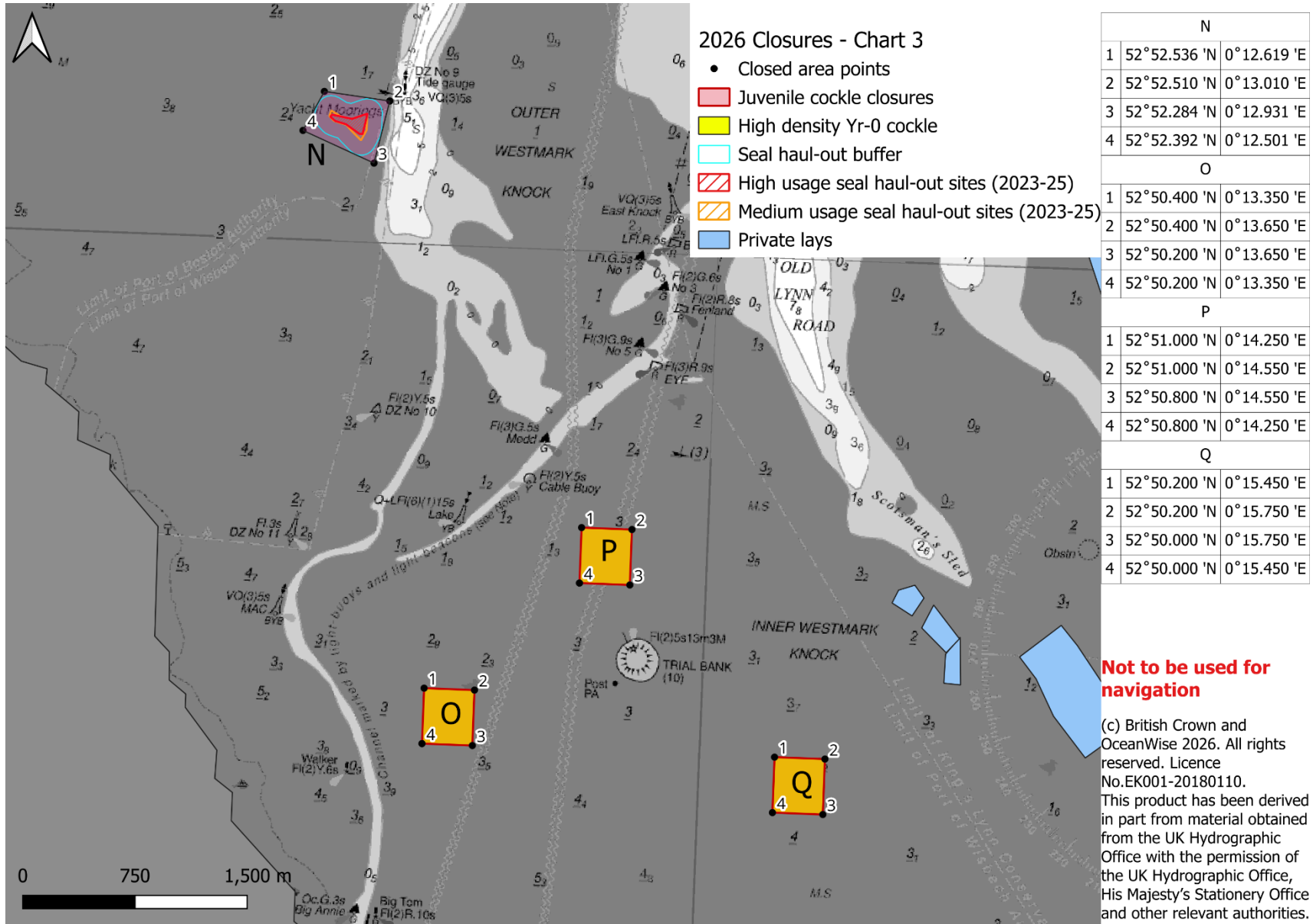
2026 Closures - Chart 2

- Closed area points
- Juvenile cockle closures
- High density Yr-0 cockle
- Seal haul-out buffer
- ▨ High usage seal haul-out sites (2023-25)
- ▨ Medium usage seal haul-out sites (2023-25)
- Private lays

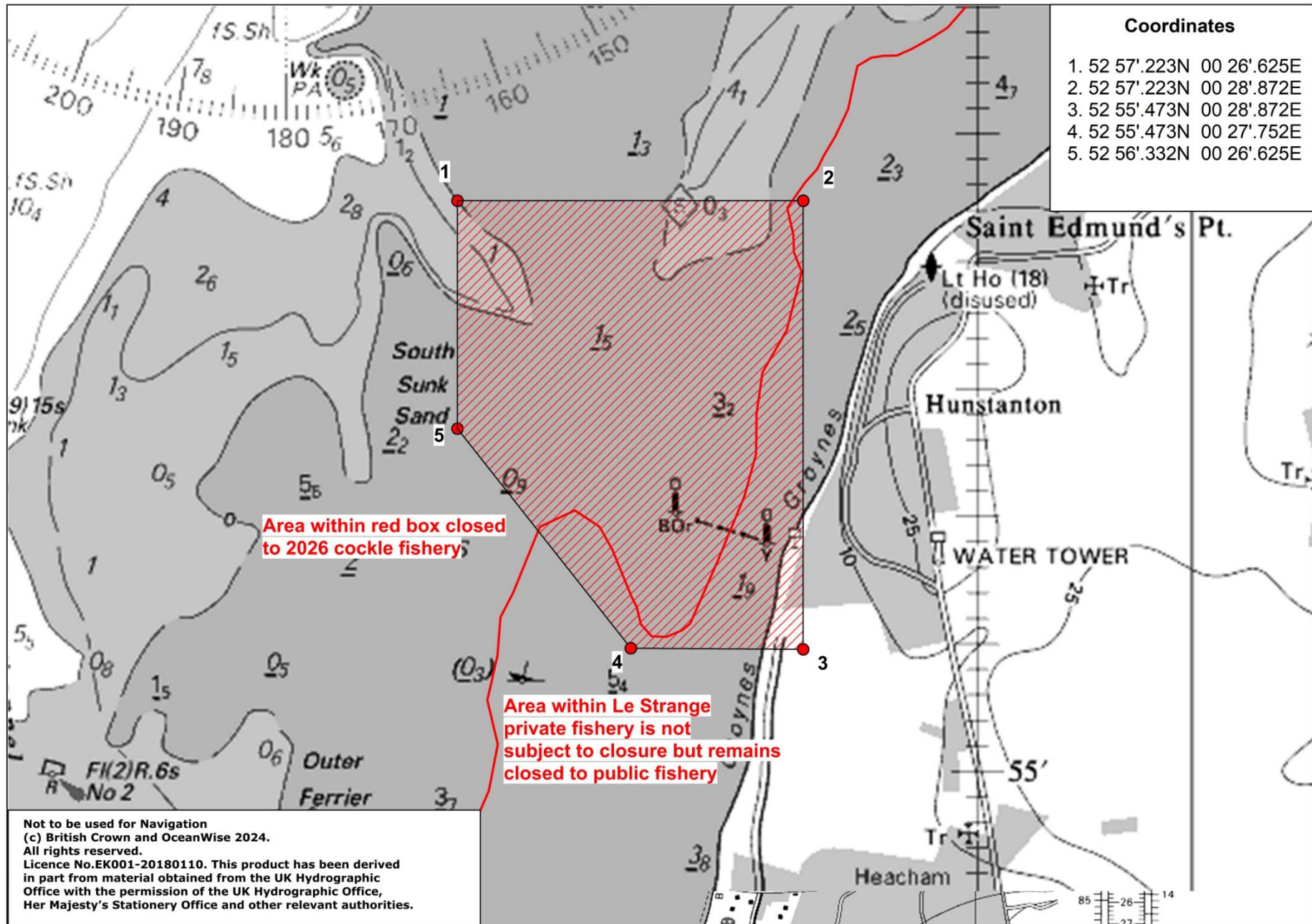
(c) British Crown and OceanWise 2026. All rights reserved. Licence No.EK001-20180110.
 This product has been derived in part from material obtained from the UK Hydrographic Office with the permission of the UK Hydrographic Office, His Majesty's Stationery Office and other relevant authorities.



Schedule 1 Closed Areas



Schedule 1 Closed Areas



Schedule 1 Closed Areas

Closures over Shellfish Lays

Clay Hole

Lay	Latitude	Longitude
CH1	52° 56.540'N	0° 05.980'E
	52° 56.540'N	0° 06.180'E
	52° 56.630'N	0° 06.300'E
	52° 56.640'N	0° 06.120'E
CH1a	52° 56.630'N	00° 06.300'E
	52° 56.629'N	00° 06.383'E
	52° 56.540'N	00° 06.180'E
	52° 56.540'N	00° 05.980'E
	52° 56.463'N	00° 06.081'E
CH2	52° 56.640'N	00° 06.120'E
	52° 56.630'N	00° 06.300'E
	52° 56.750'N	00° 06.450'E
	52° 56.750'N	00° 06.290'E
CH2a	52° 56.750'N	00° 06.450'E
	52° 56.630'N	00° 06.300'E
	52° 56.630'N	00° 06.383'E
	52° 56.663'N	00° 06.439'E
CH4	52° 56.850'N	0° 06.580'E
	52° 56.810'N	0° 06.350'E
	52° 56.880'N	0° 06.450'E
	52° 56.900'N	0° 06.680'E
CH6	52° 56.155'N	0° 05.629'E
	52° 56.135'N	0° 05.461'E
	52° 56.077'N	0° 05.462'E
	52° 56.103'N	0° 05.631'E
	52° 56.165'N	0° 05.725'E
CH7	52° 56.210'N	0° 05.724'E
	52° 56.493'N	0° 05.815'E
	52° 56.448'N	0° 05.879'E
	52° 56.454'N	0° 05.660'E
CH8	52° 56.406'N	0° 05.700'E
	52° 56.540'N	0° 05.980'E
	52° 56.463'N	0° 06.081'E
	52° 56.493'N	0° 05.815'E
	52° 56.448'N	0° 05.879'E

Pandora

Lay	Latitude	Longitude
P6	52° 51.860'N	0° 21.573'E
	52° 51.808'N	0° 21.651'E
	52° 51.724'N	0° 21.557'E
	52° 51.576'N	0° 21.481'E
	52° 51.600'N	0° 21.385'E
P7	52° 51.726'N	0° 21.473'E
	52° 51.476'N	0° 21.377'E
	52° 51.471'N	0° 21.460'E
	52° 51.576'N	0° 21.481'E
	52° 51.600'N	0° 21.385'E

Black Buoy

BB1	52° 56.340'N	0° 08.410'E
	52° 56.300'N	0° 08.440'E
	52° 56.260'N	0° 08.310'E
	52° 56.210'N	0° 08.340'E
BB2	52° 56.232'N	0° 08.202'E
	52° 56.190'N	0° 08.310'E
	52° 56.094'N	0° 08.070'E
	52° 56.046'N	0° 08.172'E
BB3	52° 56.094'N	0° 08.070'E
	52° 56.046'N	0° 08.172'E
	52° 55.847'N	0° 08.067'E
	52° 55.886'N	0° 07.932'E
BB4	52° 55.699'N	0° 07.967'E
	52° 55.728'N	0° 07.841'E
	52° 55.847'N	0° 08.067'E
	52° 55.886'N	0° 07.932'E

Schedule 1 Closed Areas

Tofts	Latitude	Longitude			
Lay			TO5	52° 57.030'N	0° 09.327'E
TOA	52° 57.487'N	0° 10.412'E		52° 57.154'N	0° 09.214'E
	52° 57.600'N	0° 10.269'E		52° 57.110'N	0° 09.558'E
	52° 57.423'N	0° 10.320'E		52° 57.244'N	0° 09.400'E
	52° 57.566'N	0° 10.135'E	TO6	52° 56.950'N	0° 09.221'E
TOB	52° 57.600'N	0° 10.269'E		52° 57.086'N	0° 09.086'E
	52° 57.667'N	0° 10.386'E		52° 57.030'N	0° 09.372'E
	52° 57.560'N	0° 10.319'E		52° 57.154'N	0° 09.214'E
	52° 57.612'N	0° 10.422'E	TO7	52° 56.950'N	0° 09.221'E
TO1	52° 57.423'N	0° 10.320'E		52° 57.086'N	0° 09.086'E
	52° 57.566'N	0° 10.135'E		52° 56.882'N	0° 09.083'E
	52° 57.352'N	0° 10.126'E		52° 57.021'N	0° 08.940'E
	52° 57.518'N	0° 09.940'E	TO8	52° 56.810'N	0° 08.951'E
TO2	52° 57.352'N	0° 10.126'E		52° 56.949'N	0° 08.809'E
	52° 57.518'N	0° 09.940'E		52° 56.882'N	0° 09.083'E
	52° 57.469'N	0° 09.741'E		52° 57.021'N	0° 08.940'E
	52° 57.282'N	0° 09.938'E	TO9	52° 56.810'N	0° 08.951'E
TO3a	52° 57.324'N	0° 09.578'E		52° 56.949'N	0° 08.809'E
	52° 57.399'N	0° 09.808'E		52° 56.663'N	0° 08.810'E
	52° 57.187'N	0° 09.716'E		52° 56.757'N	0° 08.657'E
	52° 57.282'N	0° 09.938'E	TO10	52° 56.567'N	0° 08.529'E
TO3b	52° 57.324'N	0° 09.578'E		52° 56.519'N	0° 08.652'E
	52° 57.409'N	0° 09.490'E		52° 56.663'N	0° 08.810'E
	52° 57.469'N	0° 09.741'E		52° 56.757'N	0° 08.657'E
	52° 57.399'N	0° 09.808'E	TO11	52° 56.567'N	0° 08.529'E
TO4a	52° 57.110'N	0° 09.558'E		52° 56.519'N	0° 08.652'E
	52° 57.244'N	0° 09.400'E		52° 56.440'N	0° 08.438'E
	52° 57.324'N	0° 09.578'E		52° 56.415'N	0° 08.503'E
	52° 57.187'N	0° 09.716'E	Herring Hill		
TO4b	52° 57.244'N	0° 09.400'E	HH1	52° 54.996'N	0° 06.552'E
	52° 57.289'N	0° 09.470'E		52° 55.088'N	0° 06.627'E
	52° 57.377'N	0° 09.378'E		52° 55.148'N	0° 06.684'E
	52° 57.349'N	0° 09.278'E		52° 54.911'N	0° 06.742'E
				52° 55.078'N	0° 06.855'E
TO4c	52° 57.324'N	0° 09.578'E			
	52° 57.289'N	0° 09.470'E			
	52° 57.377'N	0° 09.378'E			
	52° 57.409'N	0° 09.490'E			

Schedule 1 Closed Areas

Scotman's Sled

Lay	Latitude	Longitude
SS1	52° 50.386'N	0° 17.100'E
	52° 50.240'N	0° 17.298'E
	52° 50.330'N	0° 17.489'E
	52° 50.430'N	0° 17.340'E
SS2	52° 50.652'N	0° 16.523'E
	52° 50.600'N	0° 16.447'E
	52° 50.686'N	0° 16.296'E
	52° 50.770'N	0° 16.362'E
SS4	52° 50.819'N	0° 16.150'E
	52° 50.772'N	0° 16.114'E
	52° 50.728'N	0° 16.236'E
	52° 50.794'N	0° 16.303'E
	52° 50.839'N	0° 16.246'E
SS5	52° 50.658'N	0° 16.527'E
	52° 50.595'N	0° 16.444'E
	52° 50.490'N	0° 16.440'E
	52° 50.486'N	0° 16.540'E
SS7	52° 50.386'N	0° 17.100'E
	52° 50.614'N	0° 17.153'E
	52° 50.518'N	0° 16.988'E
	52° 50.430'N	0° 17.340'E
SS8	52° 50.518'N	0° 16.988'E
	52° 50.614'N	0° 17.153'E
	52° 50.430'N	0° 17.340'E
	52° 50.330'N	0° 17.489'E
	52° 50.364'N	0° 17.558'E
	52° 50.644'N	0° 17.226'E
	52° 50.714'N	0° 17.126'E
	52° 50.595'N	0° 16.884'E

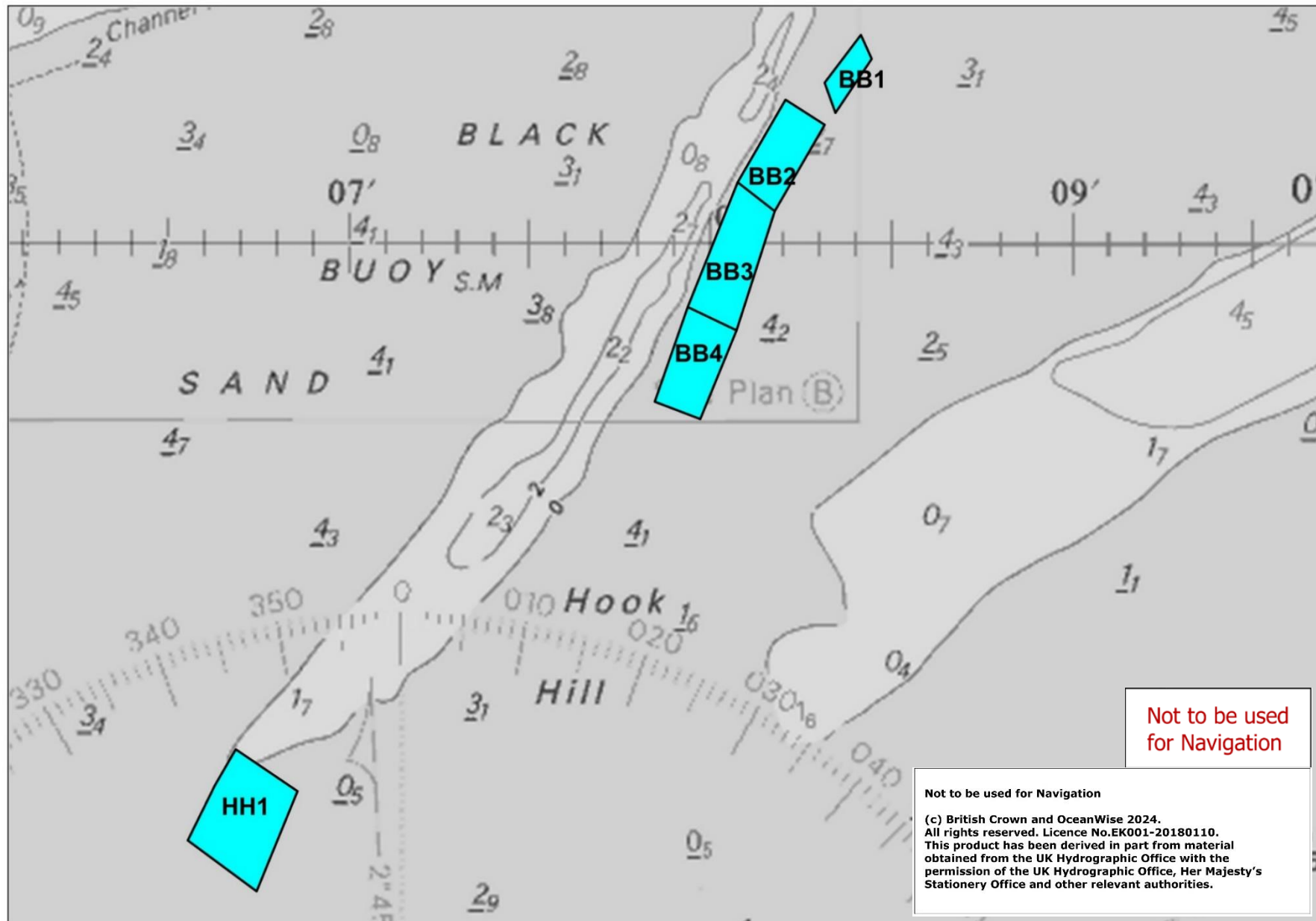
Wrangle

W1	53° 00.264'N	0° 12.100'E
	53° 00.262'N	0° 12.266'E
	52° 59.989'N	0° 12.097'E
	52° 59.979'N	0° 12.194'E
W2	53° 00.262'N	0° 12.266'E
	53° 00.263'N	0° 12.427'E
	53° 00.067'N	0° 12.373'E
	52° 59.971'N	0° 12.268'E
	52° 59.979'N	0° 12.194'E

Thief

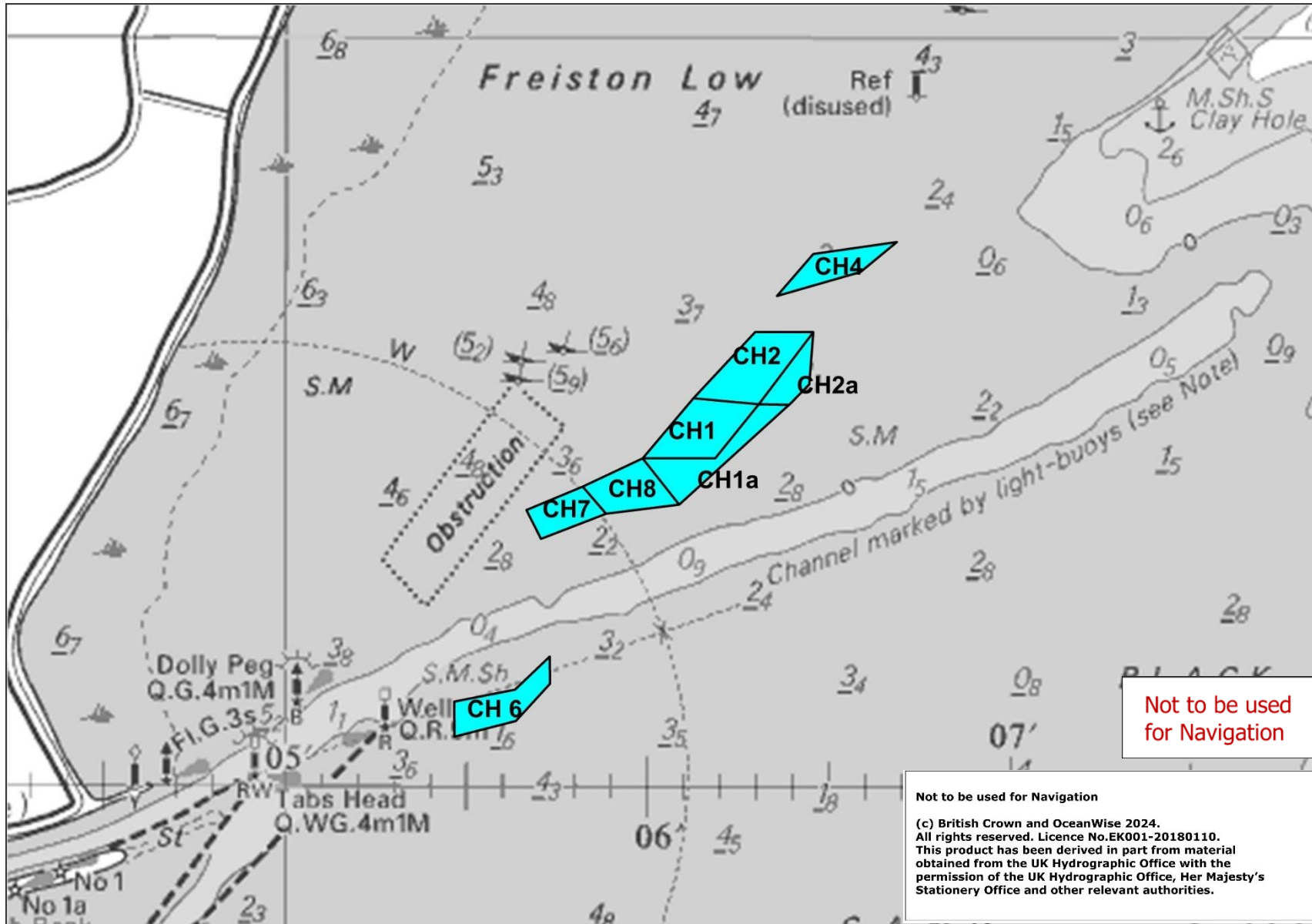
Lay	Latitude	Longitude
TH2	52° 51.200'N	0° 17.760'E
	52° 51.580'N	0° 17.480'E
	52° 51.220'N	0° 17.850'E
	52° 51.600'N	0° 17.550'E
TH4	52° 51.712'N	0° 17.788'E
	52° 51.575'N	0° 17.819'E
	52° 51.511'N	0° 17.853'E
	52° 51.435'N	0° 17.886'E
	52° 51.340'N	0° 17.926'E
	52° 51.351'N	0° 17.987'E
	52° 51.717'N	0° 17.846'E
TH5	52° 51.844'N	0° 17.781'E
	52° 51.719'N	0° 17.789'E
	52° 51.724'N	0° 17.838'E
	52° 51.837'N	0° 17.839'E
TH6	52° 51.922'N	0° 17.536'E
	52° 52.045'N	0° 17.208'E
	52° 52.060'N	0° 17.475'E
	52° 51.908'N	0° 17.292'E
TH7	52° 51.897'N	0° 17.784'E
	52° 51.897'N	0° 17.861'E
	52° 51.837'N	0° 17.839'E
	52° 51.845'N	0° 17.781'E
TH8	52° 51.897'N	0° 17.784'E
	52° 51.897'N	0° 17.861'E
	52° 52.162'N	0° 17.861'E
	52° 52.148'N	0° 17.948'E
RG1	52° 56.973'N	0° 12.732'E
	52° 57.029'N	0° 12.330'E
	52° 57.414'N	0° 12.914'E
	52° 57.413'N	0° 12.664'E
RG2	52° 57.960'N	0° 11.213'E
	52° 57.877'N	0° 11.310'E
	52° 57.827'N	0° 11.200'E
	52° 57.919'N	0° 11.103'E
RG3	52° 57.884'N	0° 10.873'E
	52° 57.741'N	0° 10.971'E
	52° 57.710'N	0° 10.862'E
	52° 57.790'N	0° 10.689'E

Schedule 1 Closed Areas



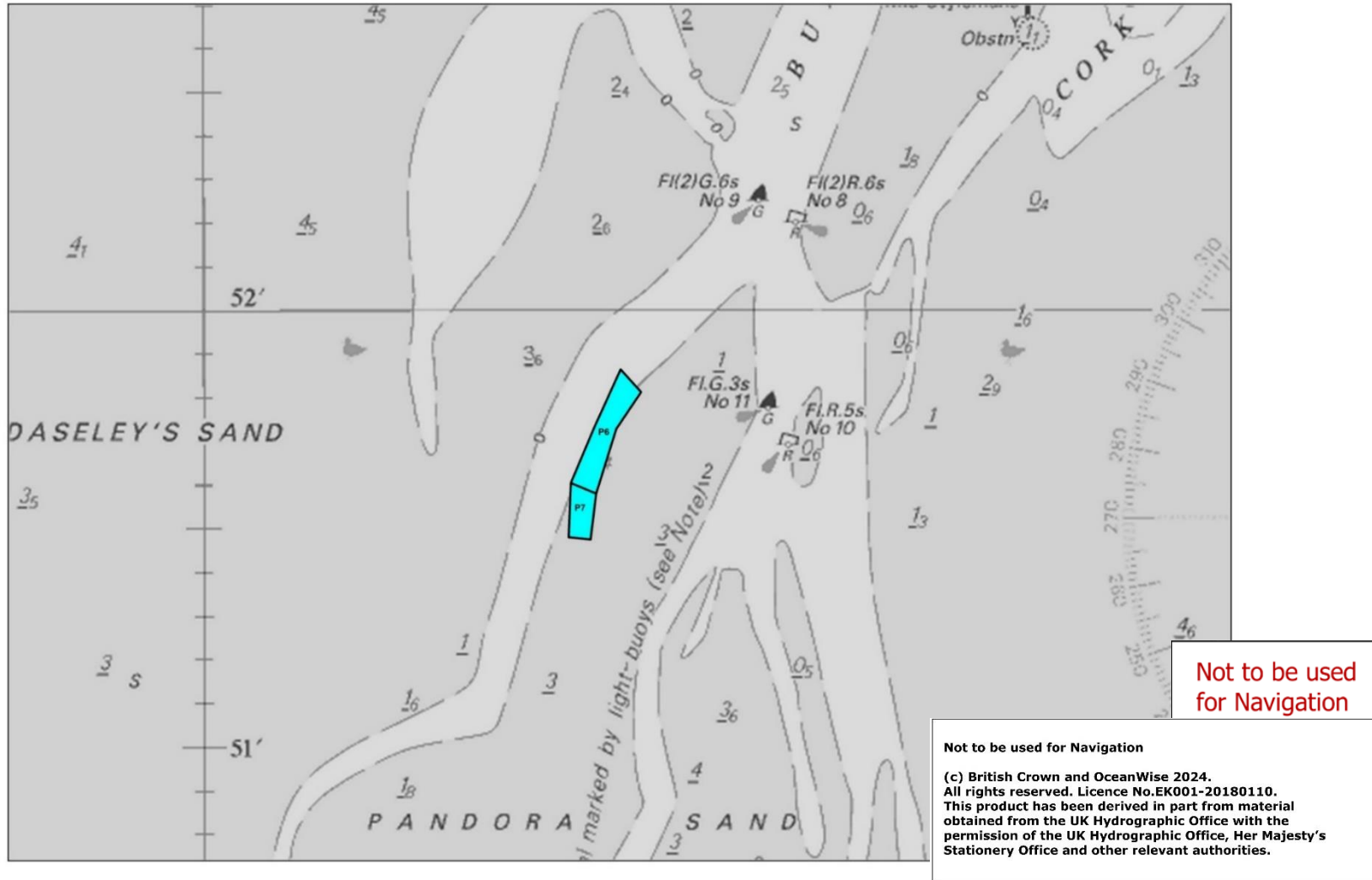
Wash Lays Chart 1 – showing the area of Black Buoy and Herring Hill sands and private lays

Schedule 1 Closed Areas



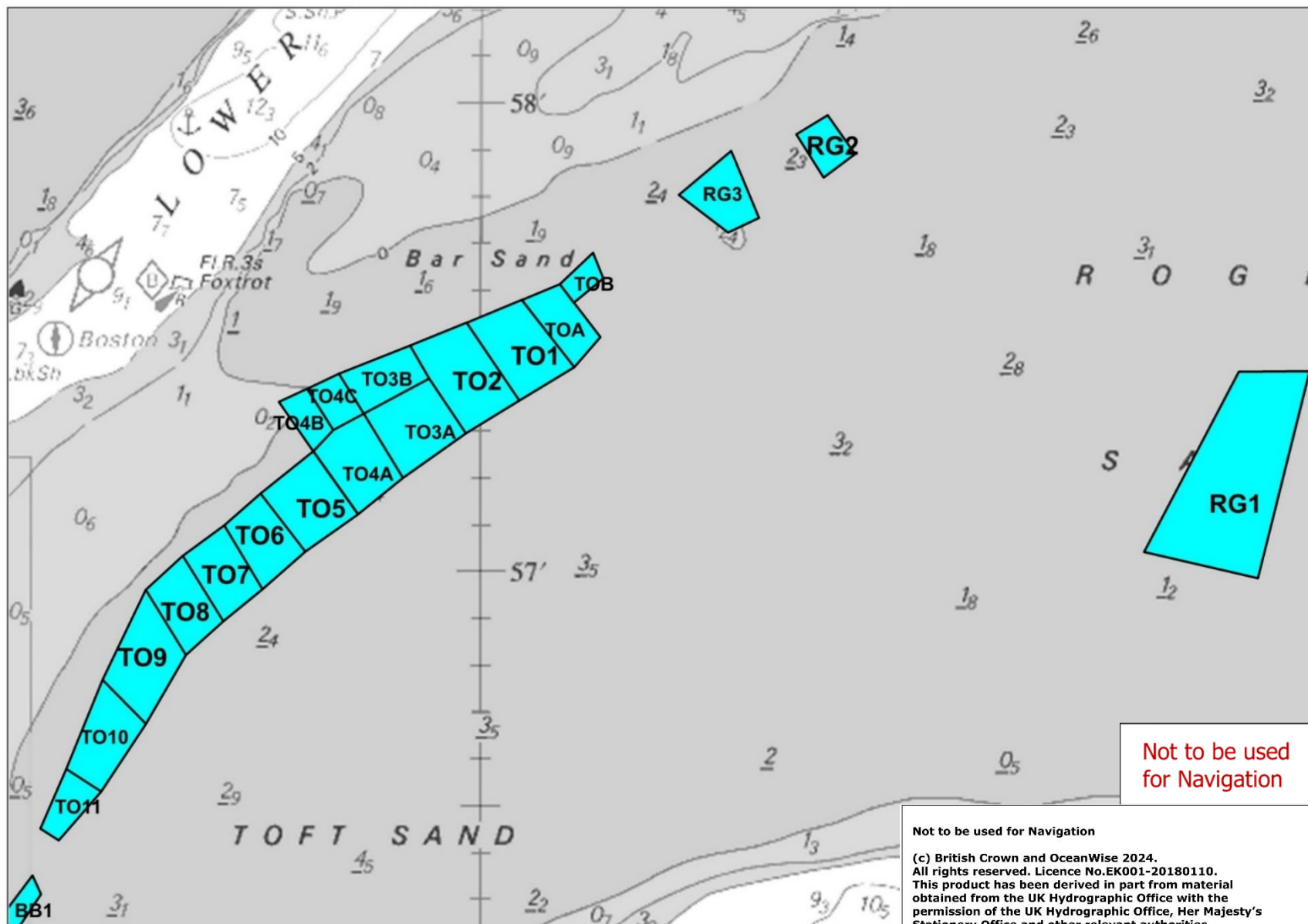
Wash Lays Chart 2 – showing the area of Clay Hole and private lays

Schedule 1 Closed Areas



Wash Lays Chart 3 – showing the area of Pandora sands and private lays

Schedule 1 – Closed Areas

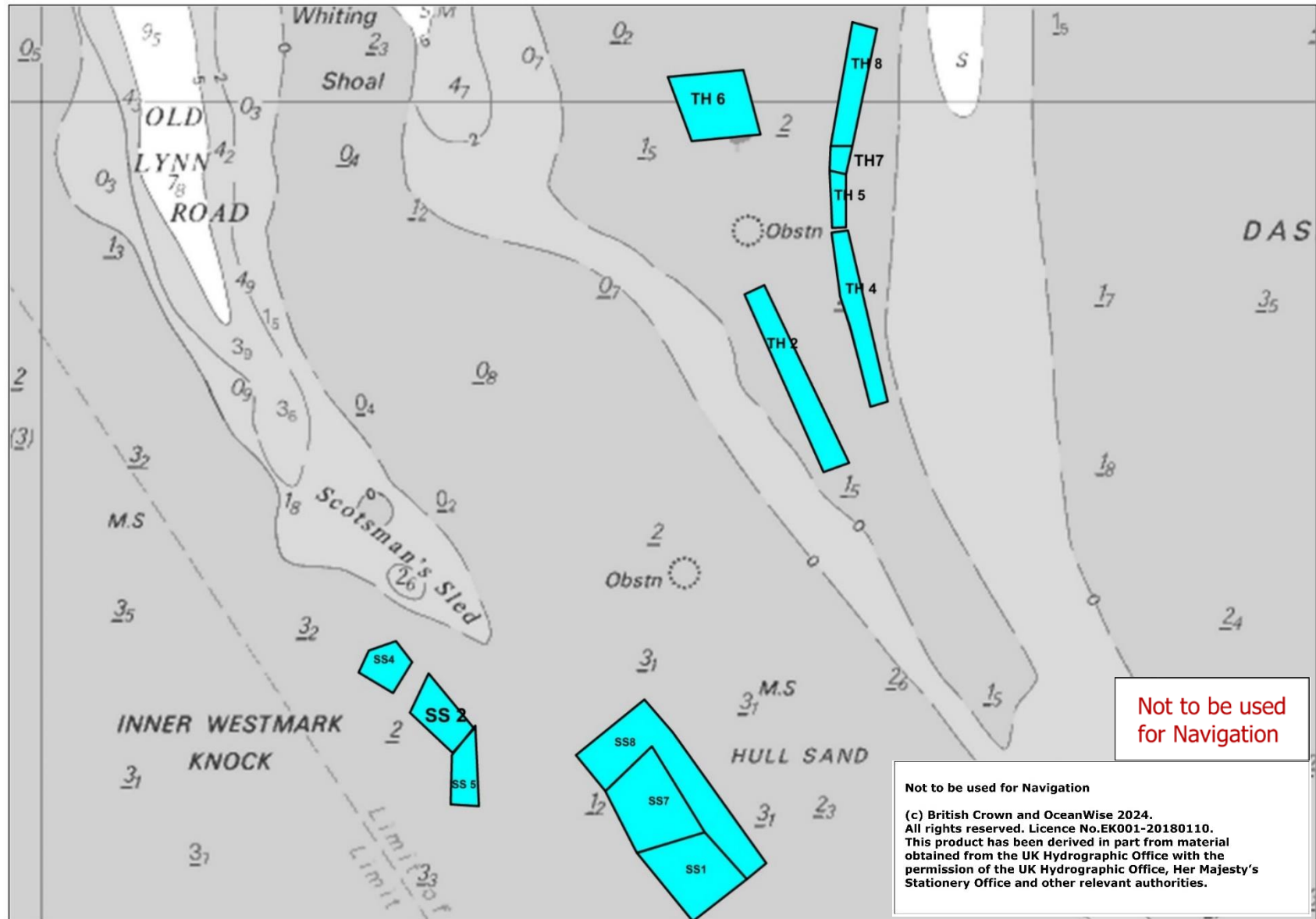


Wash Lays Chart 4 – showing the area of Toft and Roger sands and private lays

Not to be used for Navigation

(c) British Crown and OceanWise 2024.
All rights reserved. Licence No.EK001-20180110.
This product has been derived in part from material obtained from the UK Hydrographic Office with the permission of the UK Hydrographic Office, Her Majesty's Stationary Office and other relevant authorities.

Schedule 1 – Closed Areas



Wash Lays Chart 5 – showing the area of Scotsman Sled and Thief sands and private lays

Schedule 2 – Operating Times

In accordance with permit condition 6, it is prohibited to fish outside of the periods specified as open in this schedule.

	White rows are open periods
	Blue rows are closed periods

June

Date	Day	High Water	Height	High Water	Height	Open/close
1	Mon	07:46	6.91	20:12	6.63	
2	Tue	08:19	6.93	20:48	6.52	
3	Wed	08:52	6.88	21:24	6.38	
4	Thu	09:25	6.77	22:00	6.2	
5	Fri	10:01	6.62	22:39	6.01	
6	Sat	10:40	6.43	23:23	5.81	
7	Sun	11:24	6.24	****	****	
8	Mon	00:14	5.64	12:15	6.1	
9	Tue	01:15	5.58	13:15	6.06	
10	Wed	02:23	5.67	14:23	6.16	
11	Thu	03:27	5.91	15:28	6.41	
12	Fri	04:25	6.24	16:30	6.71	
13	Sat	05:21	6.58	17:30	7	
14	Sun	06:13	6.9	18:30	7.25	
15	Mon	07:03	7.17	19:28	7.43	Open 0500hrs
16	Tue	07:51	7.38	20:24	7.49	
17	Wed	08:37	7.48	21:17	7.4	
18	Thu	09:23	7.47	22:09	7.17	
19	Fri	10:09	7.34	23:03	6.84	
20	Sat	10:56	7.12	23:57	6.47	Close 0100hrs
21	Sun	11:45	6.82	****	****	
22	Mon	00:54	6.12	12:40	6.48	
23	Tue	01:53	5.86	13:44	6.17	
24	Wed	02:51	5.73	14:53	5.96	
25	Thu	03:49	5.74	16:00	5.9	
26	Fri	04:43	5.9	17:02	5.97	
27	Sat	05:31	6.13	17:54	6.12	
28	Sun	06:14	6.4	18:41	6.28	Open 0400hrs
29	Mon	06:52	6.64	19:22	6.41	
30	Tue	07:29	6.82	20:00	6.5	

Schedule 2 – Operating Times

July

Date	Day	High Water	Height	High Water	Height	Open/close
1	Wed	08:03	6.94	20:36	6.54	
2	Thu	08:37	7.02	21:10	6.55	
3	Fri	09:12	7.06	21:45	6.52	Close 2345hrs
4	Sat	09:47	7.03	22:21	6.43	
5	Sun	10:22	6.94	23:00	6.28	Open 0830hrs
6	Mon	11:00	6.8	23:41	6.1	
7	Tue	11:42	6.64	****	****	Close 0130hrs
8	Wed	00:28	5.92	12:32	6.47	
9	Thu	01:27	5.8	13:35	6.31	
10	Fri	02:37	5.8	14:49	6.27	
11	Sat	03:49	5.98	16:06	6.39	
12	Sun	04:58	6.31	17:21	6.66	
13	Mon	06:00	6.72	18:30	7.01	Open 0400hrs
14	Tue	06:54	7.13	19:29	7.31	
15	Wed	07:41	7.47	20:21	7.47	
16	Thu	08:26	7.7	21:09	7.48	
17	Fri	09:09	7.8	21:55	7.31	Close 2359hrs
18	Sat	09:51	7.73	22:38	7.02	
19	Sun	10:32	7.5	23:18	6.64	Open 0830hrs
20	Mon	11:12	7.13	23:59	6.24	
21	Tue	11:57	6.65	****	****	Close 0200hrs
22	Wed	00:44	5.87	12:48	6.12	
23	Thu	01:39	5.56	13:56	5.65	
24	Fri	02:47	5.42	15:19	5.41	
25	Sat	03:59	5.52	16:39	5.51	
26	Sun	05:03	5.82	17:41	5.81	
27	Mon	05:53	6.21	18:29	6.13	Open 0400hrs
28	Tue	06:34	6.57	19:09	6.4	
29	Wed	07:11	6.87	19:45	6.6	
30	Thu	07:45	7.11	20:18	6.75	
31	Fri	08:18	7.3	20:51	6.87	Close 2300hrs

Schedule 2 – Operating Times

August

Date	Day	High Water	Height	High Water	Height	Open/close
1	Sat	08:51	7.43	21:24	6.91	
2	Sun	09:25	7.47	21:57	6.85	Open 0730hrs
3	Mon	09:58	7.4	22:32	6.7	
4	Tue	10:33	7.24	23:07	6.46	
5	Wed	11:12	6.99	23:49	6.18	
6	Thu	11:59	6.64	****	****	Close 0200hrs
7	Fri	00:42	5.88	13:03	6.23	
8	Sat	01:57	5.66	14:29	5.96	
9	Sun	03:26	5.74	16:06	6.06	
10	Mon	04:49	6.15	17:30	6.51	Open 0230hrs
11	Tue	05:53	6.72	18:33	7	
12	Wed	06:44	7.26	19:25	7.36	
13	Thu	07:28	7.68	20:10	7.54	
14	Fri	08:09	7.96	20:51	7.55	Close 2300hrs
15	Sat	08:48	8.05	21:28	7.41	
16	Sun	09:25	7.95	22:03	7.15	Open 0730hrs
17	Mon	10:02	7.66	22:35	6.81	
18	Tue	10:39	7.21	23:07	6.43	
19	Wed	11:16	6.64	23:43	6.03	
20	Thu	****	****	12:00	5.99	Close 0200hrs
21	Fri	00:29	5.6	13:02	5.36	
22	Sat	01:37	5.26	14:40	5.02	
23	Sun	03:10	5.23	16:18	5.2	
24	Mon	04:32	5.58	17:24	5.67	
25	Tue	05:27	6.1	18:10	6.14	Open 0300hrs
26	Wed	06:10	6.59	18:48	6.52	
27	Thu	06:47	7	19:21	6.81	
28	Fri	07:20	7.32	19:53	7.03	Close 2200hrs
29	Sat	07:53	7.58	20:24	7.18	
30	Sun	08:26	7.75	20:57	7.25	Open 0630hrs
31	Mon	08:59	7.8	21:29	7.2	

Schedule 2 – Operating Times

September

Date	Day	High Water	Height	High Water	Height	Open/close
1	Tue	09:33	7.71	22:02	7.01	
2	Wed	10:08	7.46	22:37	6.72	
3	Thu	10:48	7.07	23:18	6.34	
4	Fri	11:39	6.52	****	****	Close 0100hrs
5	Sat	00:12	5.91	12:51	5.95	
6	Sun	01:33	5.58	14:36	5.69	
7	Mon	03:18	5.68	16:20	6.03	
8	Tue	04:42	6.23	17:33	6.63	Open 0300hrs
9	Wed	05:42	6.89	18:27	7.13	
10	Thu	06:28	7.43	19:11	7.42	
11	Fri	07:08	7.82	19:48	7.54	Close 2200hrs
12	Sat	07:45	8.04	20:22	7.54	
13	Sun	08:21	8.08	20:54	7.44	Open 0630hrs
14	Mon	08:57	7.92	21:25	7.25	
15	Tue	09:33	7.58	21:54	6.98	
16	Wed	10:06	7.08	22:24	6.64	
17	Thu	10:41	6.49	22:57	6.23	
18	Fri	11:21	5.83	23:37	5.76	Close 0100hrs
19	Sat	****	****	12:18	5.2	
20	Sun	00:38	5.3	14:00	4.84	
21	Mon	02:15	5.11	15:45	5.06	
22	Tue	03:48	5.43	16:52	5.6	
23	Wed	04:51	6	17:39	6.15	Open 0300hrs
24	Thu	05:36	6.57	18:16	6.61	
25	Fri	06:14	7.05	18:50	6.96	Close 2100hrs
26	Sat	06:48	7.44	19:22	7.22	
27	Sun	07:22	7.72	19:54	7.4	Open 0530hrs
28	Mon	07:56	7.91	20:27	7.48	
29	Tue	08:32	7.95	21:00	7.43	
30	Wed	09:09	7.81	21:36	7.23	

Schedule 2 – Operating Times

October

Date	Day	High Water	Height	High Water	Height	Open/close
1	Thu	09:50	7.46	22:14	6.89	
2	Fri	10:37	6.94	22:59	6.46	
3	Sat	11:36	6.32	23:58	5.99	Close 0100hrs
4	Sun	****	****	13:00	5.79	
5	Mon	01:22	5.68	14:51	5.76	
6	Tue	03:06	5.86	16:16	6.21	
7	Wed	04:25	6.41	17:19	6.73	Open 0230hrs
8	Thu	05:21	6.99	18:07	7.11	
9	Fri	06:05	7.43	18:46	7.31	Close 2100hrs
10	Sat	06:43	7.7	19:19	7.4	
11	Sun	07:19	7.83	19:50	7.44	Open 0500hrs
12	Mon	07:55	7.81	20:21	7.42	
13	Tue	08:31	7.63	20:51	7.3	
14	Wed	09:06	7.29	21:20	7.09	
15	Thu	09:40	6.83	21:49	6.79	
16	Fri	10:15	6.31	22:21	6.41	
17	Sat	10:54	5.77	23:00	5.97	Close 0030hrs
18	Sun	11:47	5.26	23:55	5.53	
19	Mon	****	****	13:12	4.93	
20	Tue	01:16	5.26	14:49	5.05	
21	Wed	02:48	5.41	16:00	5.5	
22	Thu	03:57	5.89	16:52	6.04	
23	Fri	04:49	6.45	17:35	6.53	
24	Sat	05:32	6.95	18:12	6.94	
25	Sun	05:11	7.37	17:48	7.24	Open 0300hrs
26	Mon	05:49	7.68	18:23	7.45	
27	Tue	06:28	7.87	18:59	7.56	
28	Wed	07:10	7.9	19:36	7.53	
29	Thu	07:54	7.73	20:16	7.36	
30	Fri	08:43	7.36	21:00	7.05	Close 2300hrs
31	Sat	09:37	6.85	21:50	6.65	

Schedule 2 – Operating Times

November

Date	Day	High Water	Height	High Water	Height	Open/close
1	Sun	10:42	6.31	22:50	6.27	
2	Mon	****	****	12:09	5.95	
3	Tue	00:06	6.03	13:39	5.97	
4	Wed	01:39	6.12	14:51	6.25	Open 0001hrs
5	Thu	02:53	6.48	15:50	6.57	
6	Fri	03:50	6.85	16:37	6.82	Close 1830hrs
7	Sat	04:36	7.12	17:15	6.99	
8	Sun	05:17	7.29	17:48	7.12	Open 0300hrs
9	Mon	05:55	7.36	18:20	7.23	
10	Tue	06:33	7.33	18:51	7.28	
11	Wed	07:11	7.19	19:23	7.24	
12	Thu	07:48	6.94	19:54	7.1	
13	Fri	08:22	6.61	20:25	6.88	Close 2230hrs
14	Sat	08:57	6.26	20:58	6.6	
15	Sun	09:36	5.89	21:37	6.27	
16	Mon	10:23	5.54	22:25	5.93	
17	Tue	11:23	5.27	23:26	5.68	
18	Wed	****	****	12:40	5.21	
19	Thu	00:39	5.64	13:54	5.44	
20	Fri	01:52	5.87	14:54	5.84	
21	Sat	02:52	6.28	15:45	6.29	
22	Sun	03:44	6.73	16:32	6.71	Open 0200hrs
23	Mon	04:33	7.13	17:15	7.07	
24	Tue	05:21	7.45	17:56	7.33	
25	Wed	06:09	7.66	18:38	7.51	
26	Thu	06:59	7.72	19:21	7.56	
27	Fri	07:51	7.61	20:06	7.49	Close 2200hrs
28	Sat	08:43	7.34	20:52	7.31	
29	Sun	09:39	6.95	21:42	7.04	Open 0730hrs
30	Mon	10:39	6.52	22:36	6.74	

Schedule 2 – Operating Times

December

Date	Day	High Water	Height	High Water	Height	Open/close
1	Tue	11:52	6.19	23:39	6.47	
2	Wed	****	****	13:05	6.03	
3	Thu	00:54	6.32	14:10	6.03	
4	Fri	02:09	6.32	15:09	6.15	Close 1700hrs
5	Sat	03:12	6.42	16:00	6.33	
6	Sun	04:07	6.55	16:42	6.53	Open 0200hrs
7	Mon	04:54	6.67	17:21	6.74	
8	Tue	5:39	6.76	17:56	6.93	
9	Wed	06:19	6.81	18:30	7.06	
10	Thu	06:58	6.78	19:04	7.11	
11	Fri	07:35	6.69	19:37	7.09	Close 2130hrs
12	Sat	08:09	6.55	20:10	7.01	
13	Sun	08:44	6.38	20:44	6.87	
14	Mon	09:20	6.18	21:20	6.68	
15	Tue	09:59	5.95	22:00	6.45	
16	Wed	10:43	5.72	22:45	6.23	
17	Thu	11:36	5.55	23:38	6.06	
18	Fri	****	****	12:40	5.5	Close 0200hrs
19	Sat	00:43	6.01	13:5	5.65	
20	Sun	01:54	6.14	14:54	5.95	
21	Mon	03:00	6.42	15:53	6.34	
22	Tue	04:03	6.76	16:48	6.74	
23	Wed	05:04	7.1	17:39	7.11	
24	Thu	06:03	7.38	18:26	7.42	
25	Fri	06:57	7.56	19:12	7.64	Close 2100hrs
26	Sat	07:49	7.59	19:57	7.74	
27	Sun	08:39	7.45	20:42	7.7	Open 0630hrs
28	Mon	9.29	7.16	21:27	7.52	
29	Tue	10:19	6.77	22:13	7.22	
30	Wed	11:12	6.35	23:03	6.83	
31	Thu	****	****	12.09	5.98	Close 0100hrs

Wash Cockle and Mussel Byelaw: Schedule 2 restrictions

Schedule 2 of the Wash Cockle and Mussel Byelaw 2021

The following restrictions apply to fishing in The Wash and should be read in conjunction with relevant permit conditions.



Restrictions in The Wash

The following restrictions apply in relation to fishing for, taking or removing from the fishery, cockles or mussels from within The Wash in accordance with paragraph 4(c) of this byelaw.

Vessel length restrictions

1. Subject to paragraph 2 of this schedule, a person must not use a vessel which is more than 14 metres in overall length to fish for, take or remove, from a fishery cockles or mussels.
2. Paragraph 1 of this schedule does not apply where an exemption existed immediately preceding this byelaw under Regulation 5 (vessel length restrictions) of the Wash Fishery Order and only to the effect and extent that that exemption applied.
3. Any change in beneficial or legal ownership of a vessel exempt under paragraph 2 of this schedule shall cause the exemption to end unless ownership is transferred within the same business and with the agreement of the Authority.

Daily catch restrictions (cockles)

4. A person must not, unless otherwise specified in a flexible permit condition, in any one calendar day, fish for, take (save for doing so with the intention of riddling or otherwise sorting catch in accordance with paragraph 12 of this schedule) or remove from the fishery more than 2000 kilograms or the maximum weight or volume of cockles specified in a permit condition, by hand.
5. For the purpose of determining the weight of catch, no allowance will be given for the weight of any containers or sand or other material.

Daily catch restrictions (mussels)

6. A person must not, unless otherwise specified in a flexible permit condition, in any one calendar day, fish for, take (save for doing so with the intention of riddling or otherwise sorting catch in accordance with paragraph 12 of this schedule) or remove from the fishery:
 - a) more than 4000 kilograms of mussels from a harvestable mussel fishery; or
 - b) more than 8000 kilograms of mussels from a re-laying mussel fishery.
7. For the purpose of determining the weight of catch no allowance will be given for the weight of any containers or sand or other material.

Wash Cockle and Mussel Byelaw: Schedule 2 restrictions

8. A person must not fish for, take or remove any mussels from a harvestable mussel fishery if, during the same calendar day, that person has fished for, taken or removed any mussels from a re-laying mussel fishery.
9. A person must not fish for, take or remove any mussels from a re-laying mussel fishery if, during the same calendar day, that person has fished for, taken or removed any mussels from a harvestable mussel fishery.

Mussel dredge restrictions

10. A person must not use a mussel dredge with an inside opening of more than one metre to fish for, take or remove from a fishery, mussels unless otherwise specified in a permit condition.
11. A person must not use more than two mussel dredges at any one time to fish for, take or remove mussels from a fishery unless otherwise specified in a permit condition.

Sorting of catch

12. A person must immediately return to the sea or seabed any material rejected through the sorting of catch of any bivalve mollusc, as near as possible to the place from which it was taken and must spread it thinly and evenly over that area.

Transshipping prohibition

13. A person must not tranship or otherwise relocate any cockles or mussels, or containers of any description containing any cockles or mussels, caught from the fishery from one vessel to another.

Requirement to land (cockles)

14. Subject to paragraph 15 of this schedule, a person fishing for cockles must:
 - a) take any cockles caught straight to port;
 - b) land such cockles immediately; and
 - c) not leave cockles on the sand or deposited in the water in bags or any other container for later collection.
15. Paragraph 14 of this schedule does not apply where a person has written authorisation from the Authority to re-lay cockles onto private shellfish aquaculture areas prior to them being landed.
16. A person must not land cockles on more than one occasion during one calendar day.

Wash Cockle and Mussel Byelaw: Schedule 2 restrictions

Dual fishing prohibition

17. A person must not fish for, take, or remove, from a fishery any cockles or mussels under the authority of a permit if, on the same calendar day that person fishes for, takes or removes cockles or mussels from:
- a) within The Wash under the authority of a separate permit issued under this byelaw; or
 - b) within the Wash or the le Strange Estate other than under the authority of a permit.
18. A person must not have on board any bottom towed gear which could be used to fish for, take or remove from the fishery within The Wash any cockles or mussels when fishing for, taking or removing from a fishery any cockles or mussels from a hand-work fishery within The Wash.

Standard bags

19. A person must not land mussels or cockles unless the species caught is contained in a bag which must:
- a) be of the following dimensions:
 - i. 60 centimetres or 120 centimetres in height;
 - ii. 97 centimetres in depth;
 - iii. 97 centimetres in width; and
 - b) have the words 'Wash Fishery' written on at least two sides with lettering which is at least ten centimetres tall.

Prop-washing

20. A person fishing for cockles must not use an anchor which affixes the vessel to the bottom of the seabed during the practice of prop-washing;
21. A person must spread any cockles dislodged by prop-washing thinly and evenly over the ground, as near as possible to the area from which they were dislodged before leaving the area fished.